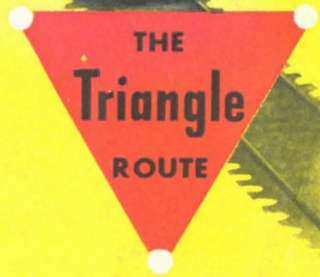
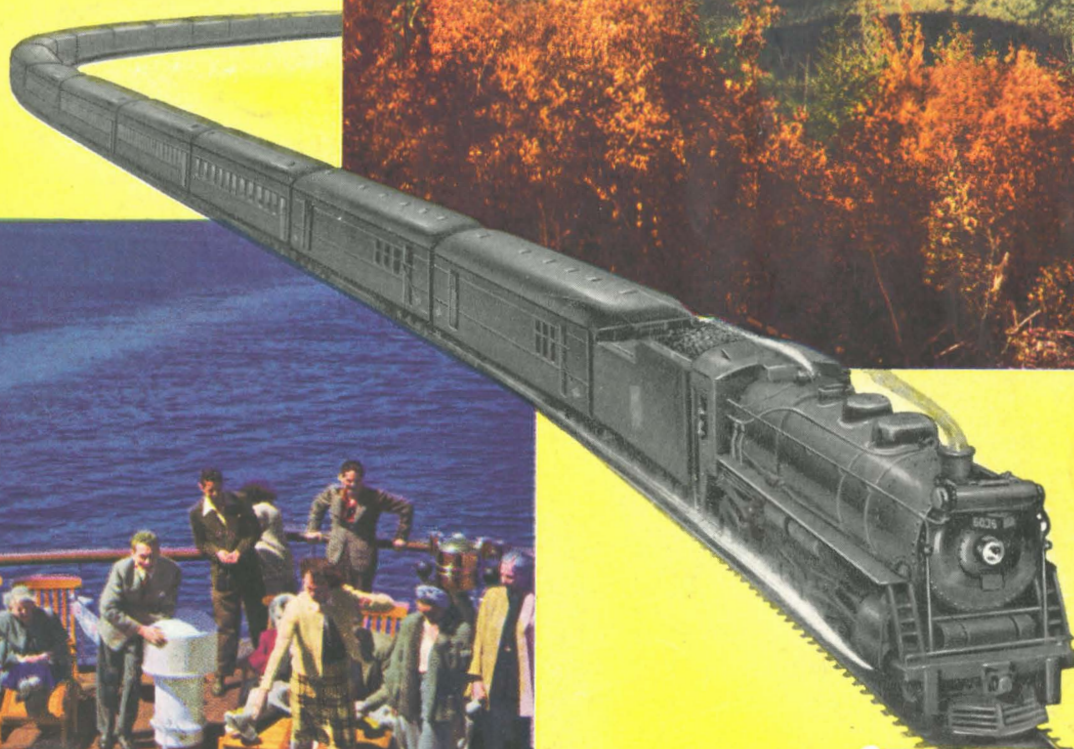
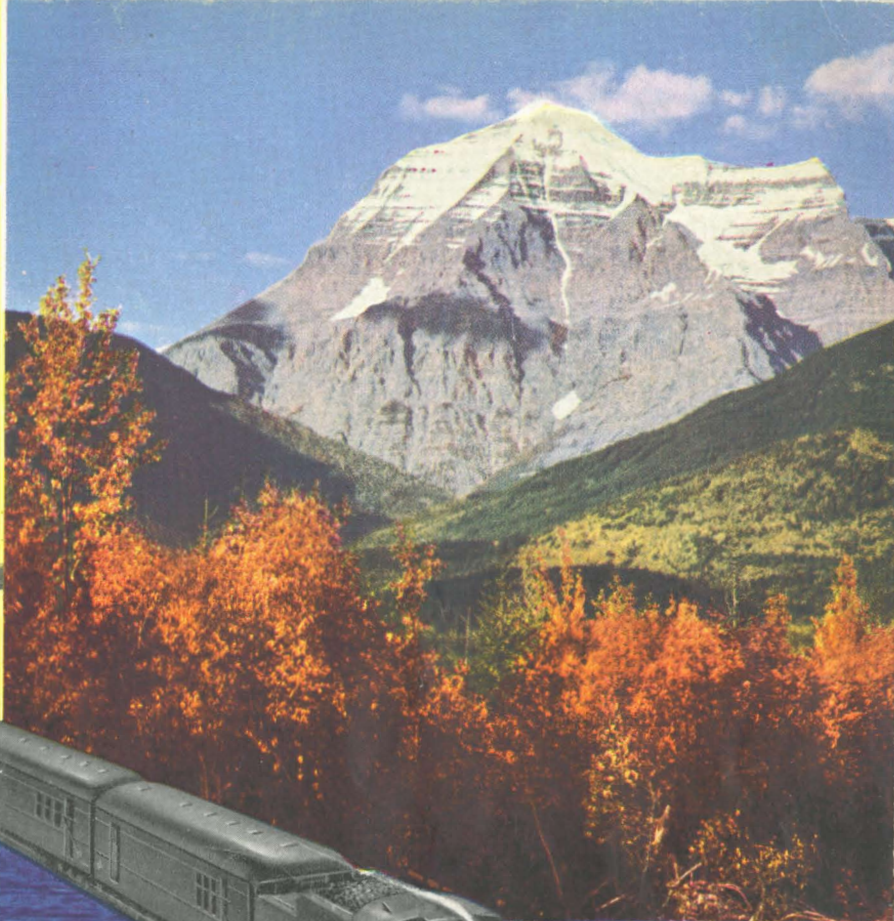


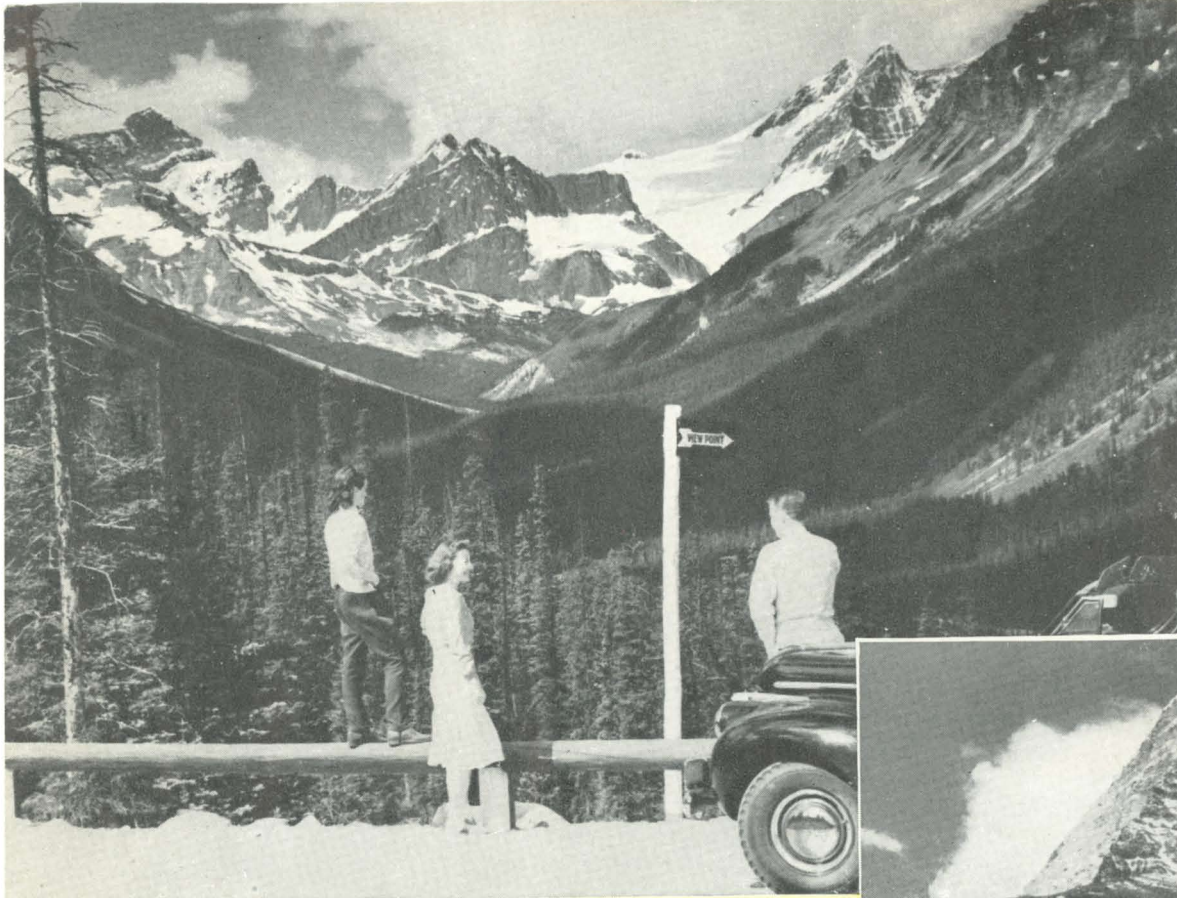
CANADIAN ROCKIES

AND THE
PACIFIC COAST



CANADIAN NATIONAL RAILWAYS

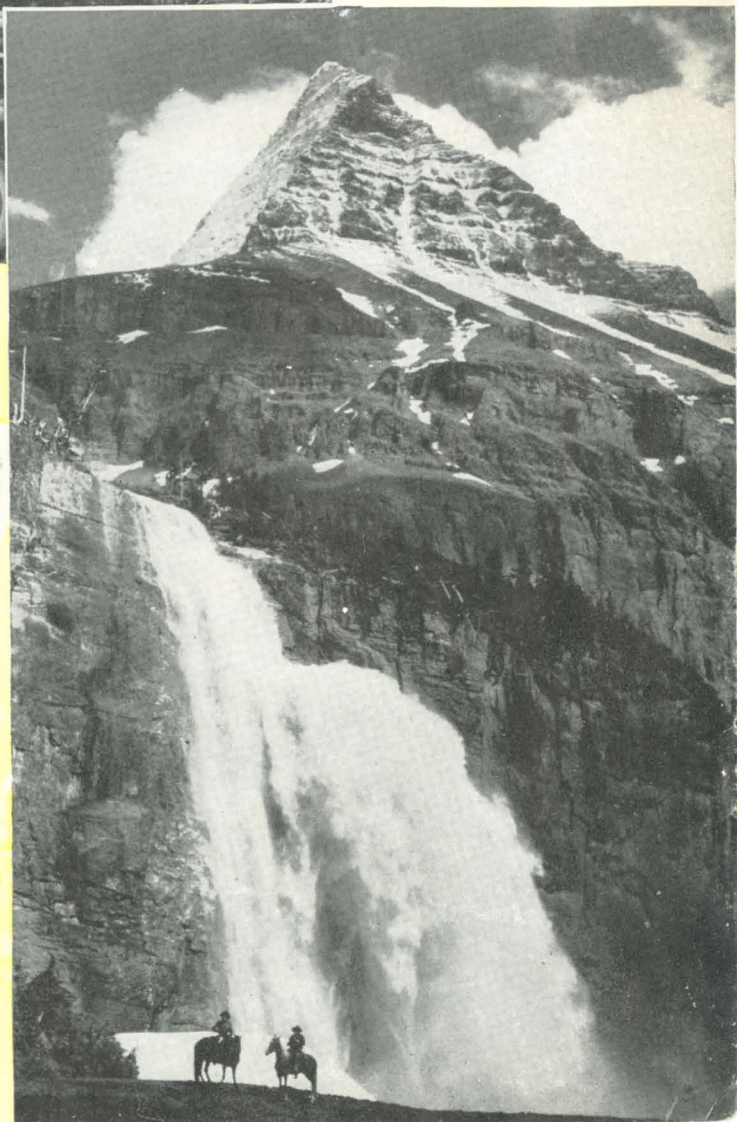
Courtesy and Service

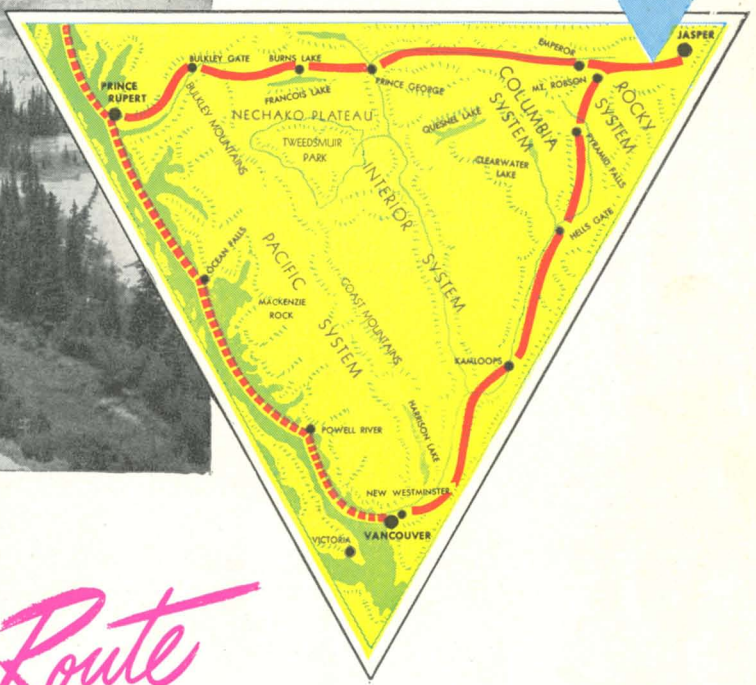


"The Continental Limited" traverses regions of spectacular scenery. ➤

Emperor Falls "The Niagara of the Rockies", leap from the lower slopes of Mt. Robson. ▼

From View Point, on the Mount Edith Cavell Drive, the Astoria Valley is seen with its mass of glacial ice and rugged peaks.





CANADIAN NATIONAL'S

Famed Triangle Route

UNFOLDS THE WONDERS OF THE CANADIAN ROCKIES

The two lines of the Canadian National Railways between the Rockies and the Pacific Coast, and the water-borne route of the same company between Vancouver and Prince Rupert, comprise The Triangle Route which offers one of the most famous vacation trips in North America.

Taking Jasper, in the heart of the Canadian Rockies, as the focal point, one leg of the triangle extends westward through the Rockies, the Selkirks, and other ranges to the Pacific Ocean at Vancouver. It follows in part the upper reaches of the Fraser River, then the turbulent North Thompson River to its confluence with its south branch, and finally moves along beside the lower reaches of the Fraser to the sea. From Vancouver, side trips to Victoria and Vancouver Island can be made by boat or by Trans-Canada Air Lines.

From Vancouver, the water-borne route extends northward to Prince Rupert along the sheltered Inside Passage that lies between British Columbia's mainland and

off-shore islands. It is a trip of two nights and one day, skirting a mountainous shore deeply indented by long fiord-like arms of the sea, all along the way. Ports of call include the paper-making towns of Powell River and Ocean Falls.

Eastward from Prince Rupert, the third leg of the Triangle extends to Jasper, following in turn the famous Skeena and Bulkley Rivers and finally, just before The Great Divide, the upper reaches of the Fraser River. This third leg, like the first, swings past Mount Robson, highest of all peaks in the Canadian Rockies.

This is the perfect vacation trip. It includes incomparable rail and sea voyages; spectacular alpine scenery and visits to attractive cities. It affords an opportunity to see ancient Indian villages with their primitive culture and to enjoy the beauty and comfort of Jasper Park Lodge, one of the most famous summer resorts in the world. It has something for everyone.

THE

Triangle

ROUTE

PRINCE
RUPERT

JASPER

VANCOUVER



VANCOUVER-*Jasper*

AN 1850 MILE JOURNEY BY LAND AND SEA



Pyramid Falls, B.C., on the route of "The Continental Limited" between Red Pass Junction and Blue River.

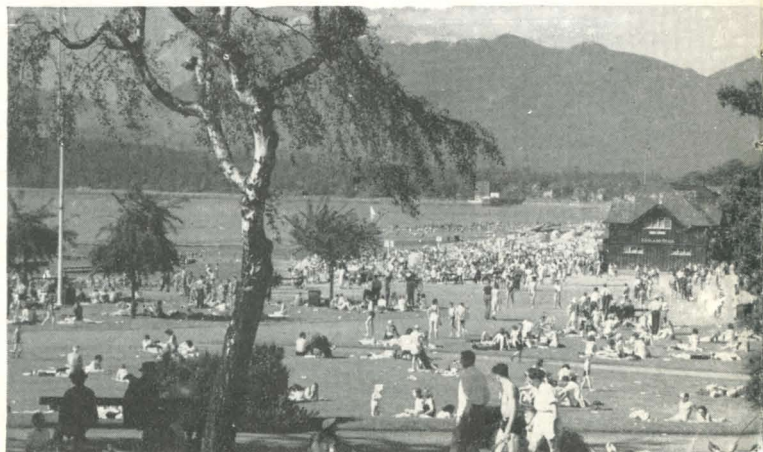
From Vancouver, The Triangle Route moves eastward and northward over the main transcontinental line of the Canadian National Railways. A few miles from Vancouver it crosses the Fraser River and begins to move along its left bank into country that grows more mountainous as miles succeed one another. As the line climbs northward, the river becomes more tumultuous, boring through deeper and deeper canyons, reaching a crescendo of noise and awesomeness at Hell's Gate, a few miles from Boston Bar.

Where the line swings away from the Fraser to follow the main Thompson River, the character of the country changes. The mountains, while high, are not so heavily forested, and this continues to Kamloops where the railway leaves the main stream to follow its north branch.

Along the North Thompson the railway climbs through a narrow, heavily forested valley, close to the river, with snow-hooded peaks starting to show here and there along branching valleys. Above Blue River, the route passes so close to Rainbow Falls that the cars are sprinkled by its spray. Near here the climb over Albreda Pass starts. From the top of the pass the great Albreda Glacier is visible. Beyond Albreda the line approaches the valley

and soon enters Tête Jaune Pass across which the splendor of Mount Robson, Monarch of the Rockies, is visible for miles. Continuing eastward, the route curls past the emerald waters of Moose and Yellowhead Lakes, mounts The Great Divide, and, picking up the Miette River, follows it to Jasper, the administrative centre of Jasper National Park, the world's largest national playground and the site of Jasper Park Lodge.

Kitsilano Beach, one of the many excellent bathing beaches within the city limits of Vancouver, B.C.



WESTBOUND YOU START AT JASPER, EASTBOUND AT VANCOUVER

MARVELLOUS CLIMATE

MAGNIFICENT SCENERY

VANCOUVER-*Victoria*



Hotel Vancouver, Vancouver, B.C.
(Operated under the joint management
of the Canadian National and Canadian
Pacific Railway Companies)

Vancouver, third largest city in Canada, has good reason to claim to be its most beautiful. It lies in an amphitheatre of mountains beside a large and perfect deep-sea harbor. To the beauty of the settings that nature has provided, man has added his own. No city could improve upon the beauty and layout of its residential areas, the exquisite campus of the University of British Columbia above the Gulf of Georgia on Point Grey. Its driveways are numerous and scenically excellent. No city anywhere has a municipal playground that in area or natural magnificence can match Stanley Park almost in the heart of Vancouver. There are beaches and golf courses galore; excellent stores for shopping; good fishing and hunting a few miles from the city limits, and, two blocks from the main business district, the Hotel Vancouver, one of the best hotels on the continent.

A few minutes distance from Vancouver by air, a few hours by boat, is Victoria, capital of British Columbia. This delightful city has aptly been described as a corner of England. It is a city of unforgettable charm and beauty and is the main gateway to Vancouver Island, which, in itself, is a vast and restful playground, literally dotted with attractive stopping places, large and small, and offering an extraordinarily wide range of vacation

facilities from sea bathing to fishing for the great Tye salmon which for size and fighting qualities is unique among sporting fish.

There is an indefinable something about Victoria and Vancouver Island that impels the visitor who has once been there to return again and again. It matches the beauty of nature with its own serenity. It evokes admiration and induces rest. It has never consciously tried to vie with or to emulate other places. In that way it has achieved distinction and attained perfection.

5

Vancouver's business section.



Victoria's picturesque Inner Harbor.



Thunder Bird totem in Stanley Park, Vancouver.

CRUISE

in Comfort



ON THE FAMED INSIDE PASSAGE

PRINCE
RUPERT

JASPER

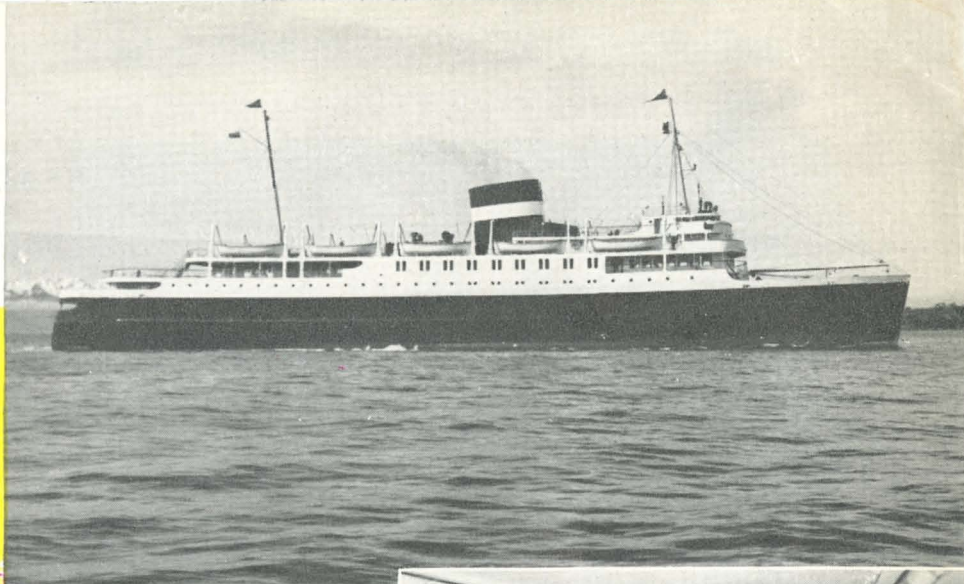
SECOND LEG OF THE TRIANGLE

VANCOUVER

VANCOUVER — PRINCE RUPERT

Words are inadequate to describe the grandeur of the sea lane between Vancouver and Prince Rupert. It lies between the mainland of British Columbia and the off-shore Vancouver and Queen Charlotte Islands. Therefore, except for one narrow strait which is crossed in a couple of hours, it is sheltered all the way.

The mainland and the two island groups, in close sight all the way, are rugged, mountainous terrain with here and there an ice-tufted crest of an inland peak gleaming above the densely forested slopes of the nearer heights. The shore-line of the mainland is deeply indented by long, twisting arms of the sea that lend to the ever-changing scenery a fiord-like quality to be found nowhere else outside of Norway. Yet it is not Norway nor does it pretend to be. It is Canada and a very beautiful part of Canada. Each mile of shore-line discloses a new beauty to the eye and writes a new gay line on the pages of memory.

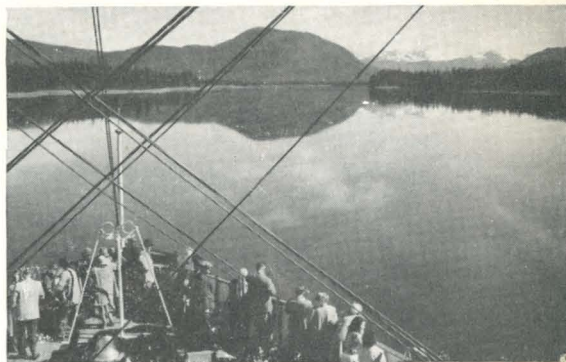


S.S. "Prince George," Canadian National's new and luxurious steamship in the Vancouver-Prince Rupert-Alaska service.

Excellent cuisine is featured in the spacious and inviting Dining Saloon of the S.S. "Prince George".



Below: Mountains guard the scenic Inside Passage.



Below: City of Prince Rupert.



PRINCE RUPERT JASPER

THIRD LEG OF THE TRIANGLE

VANCOUVER

PRINCE RUPERT — JASPER

The seven hundred miles of railway between Prince Rupert and Jasper go through some of the most spectacular scenery in Canada. Rivers, canyons, valleys and mountain peaks, the country is on a big scale, and in the midst of its wild ruggedness lie charming pastoral oases. Central British Columbia is not only a land of immense forests, famous for their timber, a land of mines and fisheries, a haunt of big game hunters, but it is also a gentle fruit-farming country. In history as in geography, it is a land of contrasts. Weather-worn totem poles in Indian fishing villages along the Skeena, old trading posts and forts, stand as symbols of the past; high steel

railway bridges and modern towns are symbols of the present.

Leaving the city of Prince Rupert on Kaien Island, itself a fascinating mixture of past and present, you follow the Skeena River for about 175 miles before you go into the valleys of the Bulkley, the Endako, the Nechako and the Fraser. The Skeena is a mighty river, three miles wide in some places; a mysterious river, often shrouded in clouds and mist; and a busy river, with its innumerable fishing craft and its salmon canneries. Names like Tyee and Sockeye give you one aspect of its nature. Soon after passing over the broad plateau at Terrace, the fruit centre famous for its strawberries, you come to the edge of Kitselas Canyon, whose wild waters have wrecked many a steamer, and soon you are in the old Indian village of Kitwanga, with its colonnade of totem poles, hemmed in by high mountains. Not far away lies Temlaham, the Indian Garden of Eden.

The greatest thrill of a journey full of thrills is the canyon in the Bulkley River, and the renowned Gate, a dyke of solid rock, eight feet thick, 150 feet high and 50 feet wide, that juts out across the river, for all the world as if ambitious human masons had set out to dam the turbulent river.

The railway follows the fertile Bulkley plateau and valley—dairying, fruit, grain and minerals—for 90 miles, and the Endako for about the same distance. Make a note of Burns Lake. It is the entrance to Tweedsmuir Park, which you may wish to visit some day.

But now your course is east, through the Nechako and Fraser Valleys, to Mount Robson and Jasper.

Left—Tweedsmuir Park, B.C., covers an area of 5,000 square miles.

7



Far left — Grotesque but strangely beautiful totems at Kitwanga.

Bulkley Gate, cut in the natural rock wall 150 feet high and 8 feet thick, stands in the swift waters of the Bulkley River.



Jasper is the largest national park in America. But it is big in more than area. Long mountain ranges, with peaks that soar into the region of eternal ice and snow, flank widespreading valleys;

long, winding rivers, mighty waterfalls, great expanses of shining lakes and the tumbled ice of vast glaciers, give the park such a scale as you expect to find in the Rockies. Yet the little things that make mountains a joy are here, too; the hills you can climb easily on foot or on horseback; the little alpine meadows brimming with wild-flowers; the quiet creeks and babbling brooks; the tiny, gleaming tarns; the chipmunk as well as the moose, the bluebird as well as the eagle.

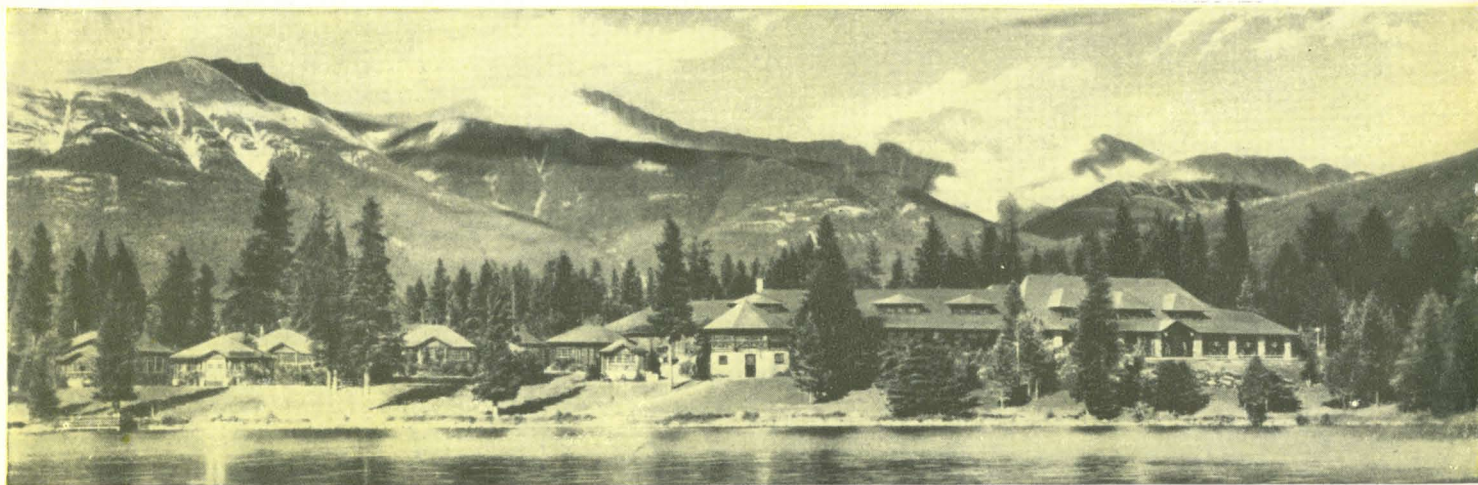
With Jasper Park Lodge, the enchanting village of bungalows on the shore of Lac Beauvert, as your headquarters, or one of the hotels or camps in town or near it, you may explore the diversities of this magnificent park in a diversity of ways. You may walk, or ride, climb, or take your ease sightseeing

from a motor car. There are hundreds of miles of motor highways and pony trails. They take you to the incredible Maligne Lake, or the Tonquin Valley, to the foot of the Angel Glacier on the slope of radiant Mount Edith Cavell, to the eighth wonder of the world, the Columbia Icefield.

You may play golf on one of the finest courses in the world; play tennis; swim in a delightful open-air heated swimming pool; fish for fighting trout. Jasper is a wild animal sanctuary; and if you want to bag bears, deer, moose, elk, bighorn sheep or high-stepping mountain goats, you will have to do it with your camera. You will discover that big game shooting with a camera is rare sport.

Jasper Park Lodge doesn't look like a hotel; it was built in keeping with its surroundings; but it has all the comforts and conveniences of the most up-to-date hotels in the city—electric light, hot water, good beds, topnotch meals, music, a ballroom for dancing or movie shows, a spacious lounge with stone fireplaces, where you may read, or play cards, or simply doze and dream after a day in the saddle or on the golf course.

The lodge grounds have been carefully but not ornately landscaped. Broad expanses of emerald lawn cleverly embroidered with flowers and shrubs flow down the gentle slopes that lie between the lodge and Lac Beauvert, a mirror in which the mountain peaks about reflect their own perfection. In the lake beavers swim; unharmed and unharmed, deer and bear wander about the lawns as unconcerned as domesticated animals in a meadow. In bright sunlight or under the soft illumination of a full moon there is a quality of magic about Jasper that grips the heart and holds the memory. It has no rival. In all the world there is only one Jasper and one Jasper Park Lodge.



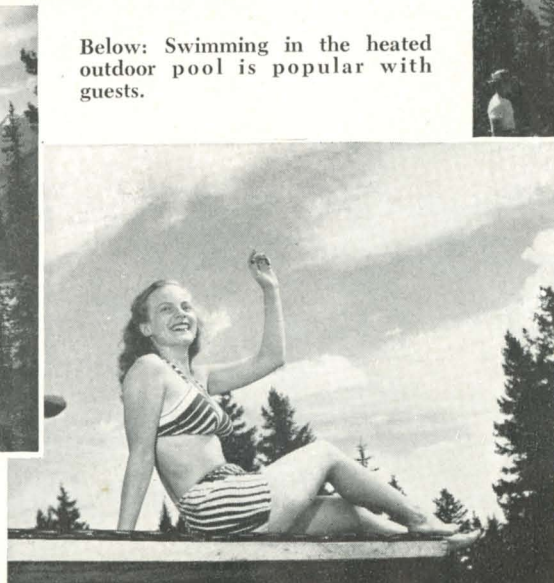
8 Roche Bonhomme (The Old Man) and the Colin Range rise serenely above Jasper Park Lodge and colorful Lac Beauvert.



Mount Athabaska and Glacier, one of the many spectacles of the Columbia Icefield Drive from Jasper Park Lodge.



Picturesque Maligne Lake, largest glacial lake in the Canadian Rockies.



Below: Swimming in the heated outdoor pool is popular with guests.



The 6,700-yard Jasper Park Lodge championship golf course is one of the finest on the continent.



Happy Days



Mighty Mount Robson (12,972 ft.) Monarch of the Canadian Rockies.

at MOUNT ROBSON PARK B.C.

Next door to Jasper National Park stands Mount Robson Park. It is about a fifth the size of its big neighbor, but within its 800 square miles it crams a world of grandeur. This could hardly be otherwise, for it surrounds the monarch of the Canadian Rockies. Mount Robson shoulders up nearly 13,000 feet above sea level and its bulk is commensurate with its height. Its imperial dignity is made all the more impressive by the tremendous glaciers that flow from its dazzling snowy crown, down its massive rocky slopes, to the green valleys and the incomparable lake. You may have a magnificent view of Robson from the railway, but to do it justice you should make a trip into the park, see Berg Lake, see the Valley of a Thousand Falls, see the Niagara of the Rockies, Emperor Falls.

That section of the Canadian Rockies comprising Mount Robson Park and the area adjoining Jasper National Park is excellent big game country. The area harbors caribou, mountain sheep and goat, moose, elk, deer, grizzly and black bear as well as small fur-bearing animals. Outfitters and guides are efficient, well-equipped and know their respective districts thoroughly.

Tumbling Glacier and Berg Lake add to the wonders of Mt. Robson.

ACCOMMODATION IN MOUNT ROBSON PARK

Hargreaves & Chesser maintain a "Dude Ranch" at Mount Robson Station and a bungalow camp at Berg Lake, as well as a complete outfit of well trained mountain horses and capable guides to handle the trail riders over miles of established trails into beautiful scenic areas. Full information and reservations can be obtained direct from Hargreaves & Chesser, Mount Robson, B.C., or at the Motor Transportation Desk, Jasper Park Lodge, Jasper National Park.

MOUNT ROBSON DUDE RANCH

The Mount Robson Dude Ranch is the centre or starting point for all activities in the Mount Robson area. This Ranch is open June 15 to August 26 each year.

Accommodation consists of: Main building, containing kitchen and dining room, bedrooms and bathroom; heated sleeping cabin with bedrooms and sitting room; four heated cabins with two bedrooms, sitting room and bathroom.

RATES

\$10.00 per day per person, \$60.00 per week per person, American Plan. Motor transfer between station and Ranch, including hand baggage.

WHAT TO DO IN MOUNT ROBSON PARK

For the benefit of guests arriving at Mount Robson Station via trains from the West numbers 2 and 4 or by local train No. M391 from Jasper.

One Day Tour No. 1:—Arrive Mount Robson, transfer to Ranch and leave for Berg Lake and Tumbling Glacier, arriving Berg Lake Bungalow Camp in time for dinner. Remain overnight and return to Mount Robson in time to make Westbound train connections. Price \$45.00 per person.

Two Day Tour No. 2:—Arrive Mount Robson, transfer to Ranch and leave for Berg Lake and Tumbling Glacier, arriving Berg Lake Bungalow Camp in time for dinner. Remain overnight. Next morning take ride to Adolphus Meadows (splendid views of Mts. Robson, Resplendent, Calumet and Robson Glacier) and in afternoon trip on the Lake with guide to the Tumbling Glacier, one of the few of its kind in the Canadian Rockies. Remain overnight and leave following morning for Mount Robson for connection with Westbound trains. Price \$55.00 per person.

Three Day Tour No. 3:—Arrive Mount Robson, transfer to Ranch and leave for Berg Lake and Tumbling Glacier, arriving at Berg Lake Bungalow Camp in time for dinner. Following day take boat trip on Lake with guide to Tumbling Glacier, and ride or hike to alpine basins above camp. Following day take all-day saddle trip with guide to Coleman Ridge (lunch on trail) to view panoramas of scenic beauty in Mount Robson area. Return to Berg Lake Bungalow Camp, and leave following morning for Mount Robson to connect with Westbound trains. Price \$65.00 per person.

Arrival by regular Westbound trains numbers 1 and 3 at Mount Robson, or departure by Eastbound trains numbers 2 and 4, make advisable spending one extra night at the Ranch at a cost of \$8.50 per person.

THE TRIP TO BERG LAKE

One of the finest scenic trail trips in the Rockies is from Mount Robson "Dude Ranch" to Berg Lake, a distance of 16 miles, four of which may be covered by automobile and twelve by saddle horse. From the cedar groves through which the trail runs, across the canyon of the Fraser River, up the banks of the Grand Fork River, which roars along rapids and cascades to that placid sheet of water, Kinney Lake, the visitor is constantly being presented with different aspects of Mount Robson. From Kinney Lake the trail enters the Valley of a Thousand Falls, whose walls reach up for 6,700 feet, with waterfalls cascading down them all the way along. Past White Falls, Falls of the Pool, and Emperor Falls, the last of which is visible from many points on the trail, and to the shores of Berg Lake, one is greeted by new and ever-changing scenes with each turn of the trail.

The saddle trip to Berg Lake, while not unduly strenuous or difficult, climbs some 2,600 feet, and its superb scenery invites a leisurely pace, with time out for photography at the many lovely viewpoints. This scenic trail is a photographer's paradise. Mr. Hamilton Jones, of Buffalo, filmed it in color and won the first World's Amateur Motion Picture Championship with it in 1937.

From the Ranch to the camp at Berg Lake one should allow six hours. Guests arriving by Canadian National trains from the West, or by local train from Jasper, reach the Ranch about noon and may easily be at Berg Lake in time for dinner. As the regular Westbound trains do not reach Mount Robson Station till the middle of the afternoon, it is not practical to proceed to Berg Lake the same day, but guests may leave early the following morning. Returning from Berg Lake, one easily reaches the ranch in time to make Westbound trains, but those going east should plan to stay overnight at the ranch.



Getting acquainted.



Big game abounds in the Mount Robson area.



Sturdy log cabins provide good accommodation.



Mule deer visit a camp looking for tidbits.



Big Game Paradise

A typical big game hunting camp in the Canadian Rockies. Right - A fine specimen of Bighorn Sheep.



BERG LAKE BUNGALOW CAMP

Berg Lake Bungalow Camp is located 5,500 feet above sea level on the shore of Berg Lake and directly opposite one of the few tumbling glaciers in the Rockies. Here good food and comfortable accommodation are available. Boating on Berg Lake, hiking over Robson and Coleman Glaciers, many mountain climbs and hiking or saddle trips to beautiful areas high up in the passes are all possible.

For those desiring to visit Berg Lake Bungalow Camp who are not interested in foregoing Tours Nos. 1, 2 and 3 covering inclusive features, the regular rate of \$25.00 covering car and saddle horse (transportation only) Mount Robson to Berg Lake and return is available.

Rates at Berg Lake Bungalow Camp, \$10.00 per day or \$60.00 per week per person. American Plan.

TRIPS TO BE MADE FROM BERG LAKE

No. 1.—All-day saddle horse and hiking trip to Coleman Glacier, hiking up the glacier, through Snowbird Pass, crossing alpine meadows, Lynx Mountain and returning over Robson Glacier. Price, including trail and glacier guides, also saddle horse \$25.00 for one person; each additional person, \$5.00

No. 2.—All-day saddle trip to Coleman Glacier. Price, including guide, \$15.00 for one person, \$5.00 each additional person.

No. 3.—Saddle trip to Mural Glacier. Here may be found interesting trilobite fossils. Price, including guide, \$15.00 for one person; each additional person, \$5.00.

No. 4.—All-day saddle trip to Moose Pass. Price, including guide, \$15.00 for one person; each additional person, \$5.00.

No. 5.—A delightful circle trail, camping and fishing trip to Idalene Pass, returning by a different route. This takes the tourist through five high passes, and permits excellent fishing at several camps. Many species of big game can be seen from the trail. Time, 14 days. The trip can be extended from Idalene Pass over Paint Brush Pass to Miette Lake, 18 miles; over Miette Pass to Grant Pass, 10 miles; over Colonel Pass and up Moose River to Terrace Creek, 18 miles.

No. 6.—Camping trip to Jasper via Moose Pass, Colonel Creek, etc., through the famous Tonquin Valley, via Amethyst Lake, to Jasper. Time, 14 days.



CAMPING TRIPS

Camping trips include pack and saddle horses, guides, cook, and accommodation while on the trail and in camp. Minimum duration 14 days. Rates on application.

NOTE: In advertising the above services the Canadian National Railways act only in capacity of Agents. They have investigated the Outfitters handling these services and recommend them to guests, but do not assume any legal responsibility whatsoever in connection with their services.

Accommodations AND OUTFITTERS IN THE CANADIAN ROCKIES

JASPER NATIONAL PARK, ALBERTA

Visitors to this famed vacation region will find accommodation to suit every purse and every taste. In addition to Jasper Park Lodge on Lac Beauvert (650 guests) the following hotels and camps offer excellent accommodation at reasonable rates: Athabasca, Astoria, Pyramid, Brewster's Amethyst Lake Camp, Maligne Lake Chalet, Y.M.C.A. Camp, Columbia Icefield Chalet, Pine Bungalow Cabins, Kiefer's Kosy Kabins, Becker's Bungalows, Tekarra Lodge, Bon Homme Bungalows, Wells Bungalows, Rainbow Tours Maligne Lake Camp, Miette Hot Springs Bungalow Camp, Sunwapta Bungalow Camp, Patricia Lake Auto Tent Camp, Pyramid Pines Chalet.

Outfitters are Major Fred Brewster, J. A. Hargreaves, and MaKenny & Unland, Creighton & McGuire, Tom McCready and Frank Wells. These outfitters have their headquarters at Jasper, where everything necessary is provided—guides, cooks, pack and saddle horses, camping equipment, provisions, etc.

ATHABASKA FOREST RESERVE, ALBERTA

Major Fred Brewster, P.O. Jasper Park, Alta., operates Brewster's Black Cat Ranch in the foothills of the Rockies on the eastern boundary of Jasper National Park, 35 miles from Jasper or six miles from Brûle station, on the main line of the Canadian National Railways. Accommodation for 24 people in separate log bungalows.

Bar F Ranch, P.O. Entrance, Alberta. Main Lodge or cabin accommodation. Big game hunting, fishing, riding.

Bar-B-Q-Ranch, P.O. Hinton, Alberta. Accommodation for boys and girls 10-14 years of age in ranch house or framed tents. Children at all times under adult supervision.

MOUNT ROBSON PARK AND DISTRICT, B.C.

Reference is made on pages 11 and 12 to accommodation in Mount Robson Park, under the management of Hargreaves & Chesser.

Other ranches in this district catering to hunters, fishermen and vacationists are: Canoe Canyon Ranch—E. M. Felta, Valemount, B.C., Half-Diamond M. Ranch—Stan J. Carr, Tête Jaune Cache, B.C.

KAMLOOPS DISTRICT, B.C.

The Kamloops District offers excellent hunting, fishing and vacation opportunities. Inquiries as to accommodations, rates, etc., should be directed to the following ranches or lodges: Bar C Guest Ranch and Cornwall Lodge, Kamloops, B.C.; Bridge Lake Guest Ranch, Fawn, B.C.; Chilko Lake Hunting and Fishing Lodge, Chilko Lake, B.C.; Double T Guest Ranch, Bridge Lake, B.C.; Dutch Lake Guest Ranch, Clearwater, B.C.; Flying U Ranch, 70 Mile House, Cariboo Road, B.C.; G. Lazy 2 Guest Ranch, 70 Mile P.O., B.C.; Johnny Hansen's Horse Head Ranch,

Bridge Lake, B.C.; Pollard's 3 Bar Guest Ranch, Clinton, B.C.; Triangle J. Guest Ranch, Pinanton Lake, P.O. Box 174, Kamloops, B.C.; Unicorn Horse Lake Ranch, Fawn, B.C. and 100 Mile House Ranch, 100 Mile House, B.C.

FRASER RIVER, B.C.

Siska Lodge and Cabins, with accommodation for fifty, is situated not far from the railway line at Cisco Station. The Lodge offers good accommodation and is situated in the Fraser River Valley. For rates write F. Lowe, Cisco, via Lytton P.O., B.C.

HARRISON LAKE DISTRICT, B.C.

The Harrison Lake district centres on the forty-five mile glacial lake of the same name. Guarded by towering Mounts Douglas and Cheam, it provides a most attractive and scenic vacation region.

Harrison Hot Springs, internationally known as a vacation resort and health centre, is close to the main line of the Canadian National Railways (sixteen miles from Chilliwack station), 75 miles from Vancouver. The Hot Springs Hotel, open the year 'round, is a modern hotel of brick construction and entirely fire-proofed by sprinkling system. For information communicate with Hotel Manager at Harrison Hot Springs, B.C.

STUART LAKE DISTRICT, B.C.

Located on Half Way Island in Stuart Lake is Culchoe-Nu Lodge catering to the vacationist, the fisherman and the hunter. It consists of a main Lodge and several cabins varying in size. The lodge is reached by a 42-mile motor trip from Vanderhoof to Ft. St. James, thence a 22-mile water trip. For information write or telegraph Mrs. H. W. Smith, Fort St. James, B.C., Douglas and Nakalot Lodges, Stuart Lake, Fort St. James, B.C. Both Lodges are of log construction, located in excellent hunting and fishing territory. For information write or telegraph Mr. and Mrs. H. R. McConachie, Fort St. James, B.C.

TWEEDSMUIR PARK, B.C.

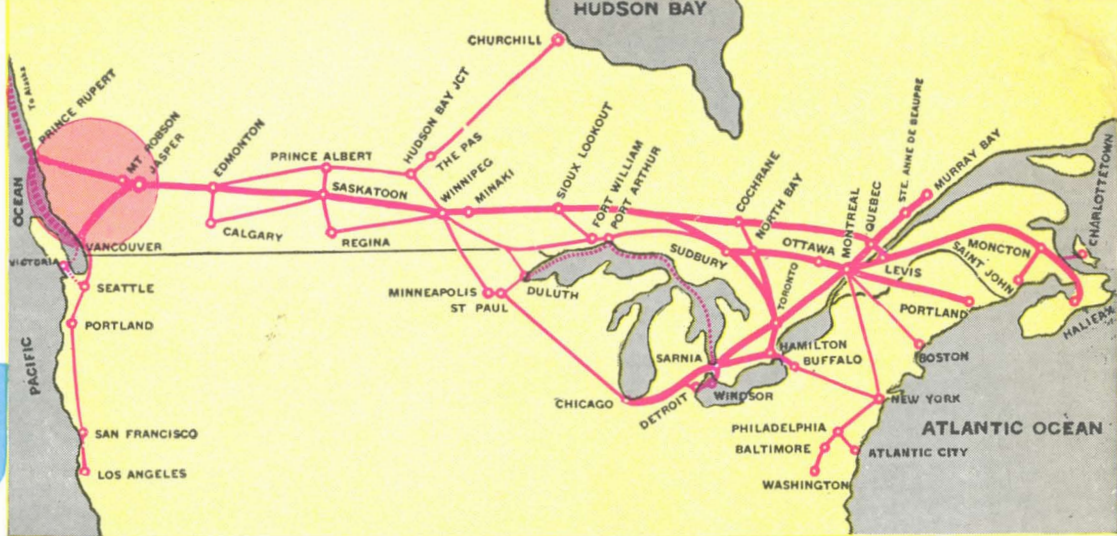
A trip replete with interest is the 300-mile circle tour by motor boat and canoe extending from Ootsa Lake by the Tahtsa and Whitesail River to Whitesail Lake. Ootsa Lake, 40 miles distant from Burns Lake Station, is reached by motor. Information in regard to this trip may be obtained from J. W. McNeil or E. Van Tine, Ootsa Lake P.O.; B. R. Harrison, Wistaria P.O.; Frank Henson, Marilla P.O.; Oscar L. Anderson, Grassy Plains P.O.; J. N. Nekon, Noralee P.O.; all via Burns Lake. Also R. S. Traquair, Prop., Lakeshore Lodge, Burns Lake and F. R. Ball, Moosehorn Lodge, Southbank, B.C.

Tweedsmuir Lodge, located 42 miles from Bella Coola is on the southern boundary of Tweedsmuir Park. Riding, hiking, fishing, hunting, etc., are a few of the activities to be enjoyed. For information and reservations communicate with Col. G. C. Corbould, Proprietor (Stuie), Bella Coola, B.C.

Map of the

C·N·R

System



The Canadian National Railways, with 24,000 miles of line, serve Canada's ten provinces and have direct connections with the principal centres in the United States.

NO PASSPORTS REQUIRED BY UNITED STATES CITIZENS TO ENTER CANADA

American currency is accepted everywhere in Canada at the official exchange rate set by the Canadian Government. It is not necessary to change it at the border. When leaving Canada, banks are permitted to sell up to \$20 U.S. money to returning American visitors to enable them to convert into U.S. money any Canadian "change" in their possession.



Canadian National Railways map showing principal lines and routes from Canadian and United States centres to the Canadian Rockies. The Continental Limited, famous through train between Montreal - Toronto - Winnipeg - Jasper - Mount Robson - Vancouver, carries all-steel air conditioned equipment. On this train there is through sleeping car service between Montreal, Toronto, Vancouver. Through sleeping car from St. Paul - during summer season - routing via Winnipeg, brings United States midwest points within two days' journey of the Canadian Rockies.



Mount Hudson Bay, B.C.

Convenient schedules, comfortable trains and steamer enable the "Triangle Route" to be made in either direction, and starting at any point on the Triangle. Spiced with a variety of scenery and activity, it is well worth while to plan your tour ahead for the maximum of vacation pleasure. Alternative routes via Prince Rupert will be dependent on the operation of C.N.S.S. steamer service between Prince Rupert and Vancouver.



The Raven Totem at Jasper, Alta., is one of the world's largest.

The Fraser River valley near Harrison Hot Springs, B.C.



Canadian National Railways

PASSENGER AGENCIES IN CANADA AND UNITED STATES

Belleville, Ont.	G. A. Campbell	346 Front St.
Boston, Mass.	S. C. Vaughan	497 Boylston St.
Brantford, Ont.	W. M. Johnston	153 Colborne St.
Brockville, Ont.	J. D. Fluker	Cor. King and East Market Sts.
Buffalo, N.Y.	C. V. Howick	13 West Genesee
Calgary, Alta.	J. C. Munro	212 Eighth Ave. West
Charlottetown, P.E.I.	L. J. McDonald	C.N.Rys. Station
Chicago, Ill.	A. M. Nolan	103 West Adams St.
Cincinnati, Ohio	A. C. L. Warner	206 Dixie Terminal Bldg.
Detroit, Mich.	R. G. Evans	1239 Washington Blvd.
Duluth, Minn.	A. W. McLean	418 West Superior St.
Edmonton, Alta.	P. A. Rooney	Cor. Jasper and 100th Sts.
Fredericton, N.B.	G. H. Cunningham	580 Queen St.
Guelph, Ont.	R. H. Scott	67 Wyndham St.
Halifax, N.S.	J. A. D. Fawcett	C.N.R. Station
Hamilton, Ont.	G. H. Walker	7 James St., North
Kansas City, Mo.	F. S. Benoliel	101 West Eleventh St.
Kingston, Ont.	C. A. Baker	115 Princess St.
London, Ont.	N. A. B. Smith	430 Richmond St.
Los Angeles, Cal.	H. R. Bullen	502 Shreve Bldg., 210 Post St.
Minneapolis, Minn.	G. D. Nugent	711 Marquette Ave.
Montreal, Que.	P. Tanguay	384 St. James St.
New York, N.Y.	A. P. Lait	630 Fifth Ave.
North Bay, Ont.	W. G. Davis	203 Main St., West
Oshawa, Ont.	H. J. Fry	3 King St., West
Ottawa, Ont.	A. R. MacDougall	Cor. Sparks & Metcalfe Sts.
Peterboro, Ont.	E. J. Ryan	324 George St.
Philadelphia, Pa.	F. K. Moore	Suite 1142, Lincoln Liberty Bldg. Broad and Chestnut Streets
Pittsburg, Pa.	J. E. Myers	355 Fifth Ave.
Portland, Me.	H. R. Perry	G.T. Railway Station
Prince Rupert, B.C.	W. Cruickshank	528 Third Ave. East
Quebec, Que.	J. H. N. Cote	10 Ste. Anne St.
Regina, Sask.	E. F. Dickie	Union Station
San Francisco, Cal.	W. H. Happ	648 Market St.
Saskatoon, Sask.	H. J. McCallum	C.N.Rys. Station
Seattle, Wash.	M. J. Woods	Joseph Vance Bldg., Third Ave. & Union St.
Sherbrooke, Que.	H. J. Enright	23 Wellington St., North
St. Catharines, Ont.	W. K. M. Dyson	13 Queen St.
Saint John, N.B.	F. M. Crocker	49 King St.
St. John's, Nfld.	T. J. Dalton	C.N.Rys. Station
St. Louis, Mo.	W. E. Rudolph	314 North Broadway
Sudbury, Ont.	A. G. Bell	41 Durham St., South
Toronto, Ont.	F. S. Webster	6 King St. W.
Vancouver, B.C.	E. D. Bell	527 Granville St. (C.N.Rys. Travel Inf. Bureau, Hotel Vancouver)
Victoria, B.C.	A. I. Curtis	Cor. Gov't & Fort Sts.
Washington, D.C.	R. C. Curley	922 Fifteenth Street N.W.
Windsor, Ont.	G. Stiven	364 Ouellette Ave.
Winnipeg, Man.	C. Tindall	Main St. and Portage Ave.
Woodstock, Ont.	C. D. Kelcey	414 Dundas St.

GENERAL AGENT
 CANADIAN NATIONAL RLYS.
 607 S. Grand Ave. MADISON 60665
 LOS ANGELES 17, CALIF.



The bedroom-buffet-lounge cars are air-conditioned. Their club-like atmosphere contributes to the enjoyment of your transcontinental journey.



Appetizing food and courteous service are features of Canadian National diners.



Mountain observation cars afford passengers wide-vision panoramas of the grandeur of the Canadian Rockies.

EUROPEAN REPRESENTATIVES

	J. B. Thom, European Manager,	
London, S.W. 1, Eng.	J. P. McClelland, General Passenger Agent,	17-19 Cockspur St.
London, E.C. 3, Eng.	S. C. Shipman	95 Leadenhall St.
Liverpool, Eng.	H. V. O. Hughes	Cunard Bldg., Water St.
Southampton, Eng.	F. E. Birch	Royal Mail House
Glasgow, C. 2, Scotland	J. M. Blair	9 Bothwell St.
Paris, France	A. Thubet	1 Rue Scribe
Antwerp, Belgium	W. M. J. L. Rademakers	9 Koolkaai

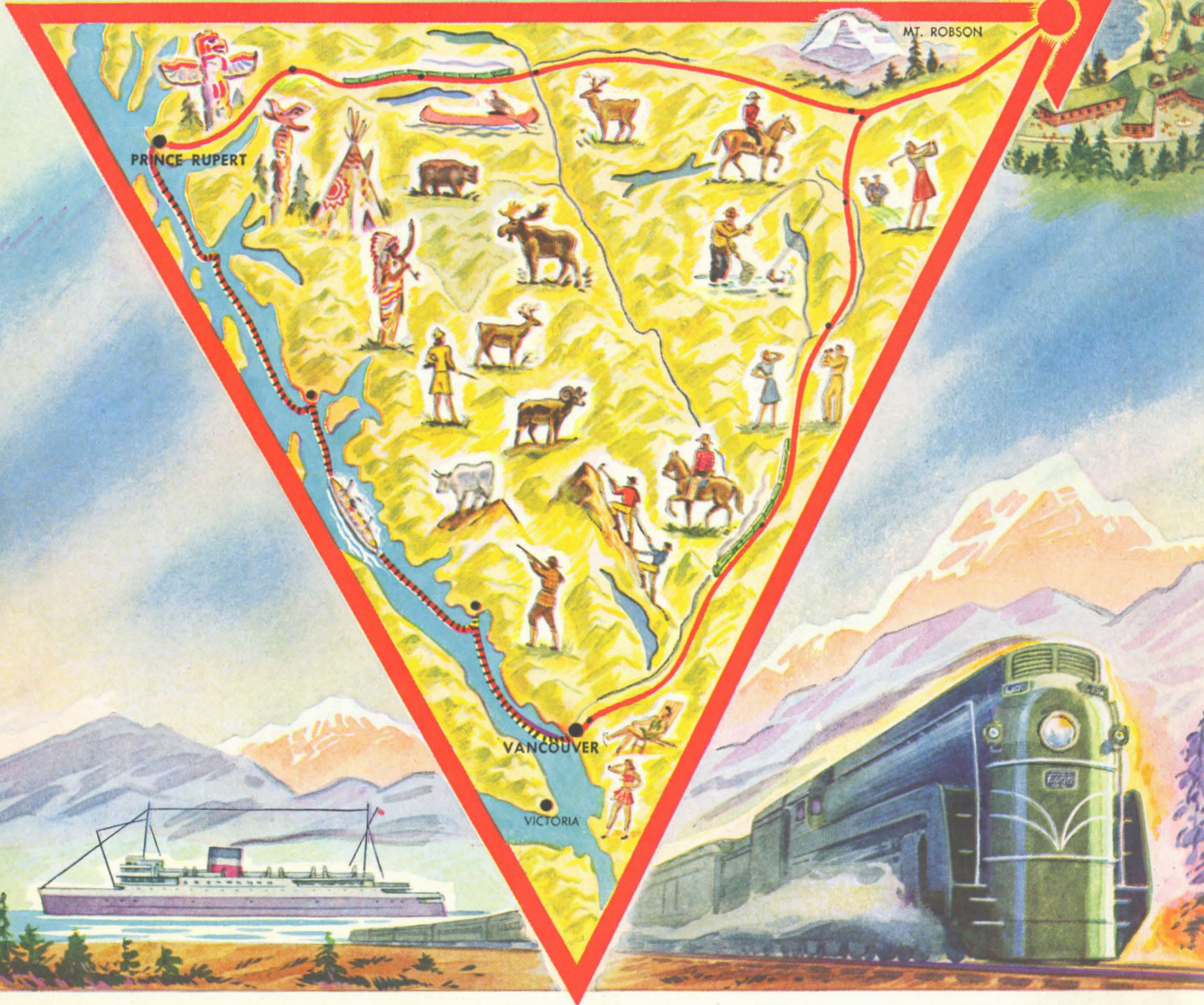
AUSTRALIA AND NEW ZEALAND REPRESENTATIVES

Sydney, Australia	G. F. Johnston	"Scottish House," 19 Bridge St.
Melbourne, Australia	D. R. Crawford	360 Collins St.
Wellington, New Zealand	W. J. Dymont	Featherston Chambers

Canadian Rockies

VIA THE FAMED
TRIANGLE ROUTE

Jasper
NATIONAL PARK



CANADIAN NATIONAL *Serves all Canada*