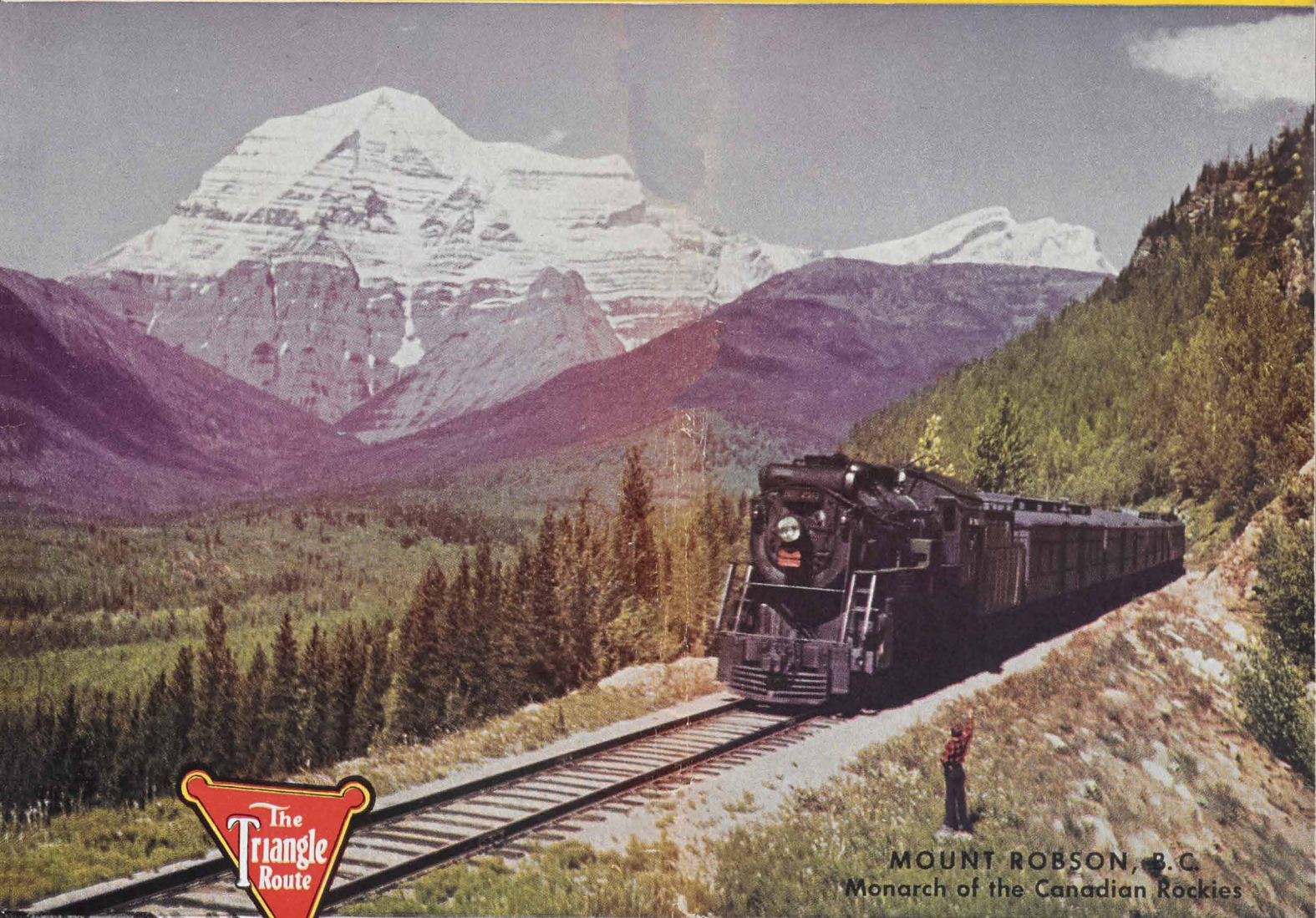


CANADIAN ROCKIES

AND THE PACIFIC COAST



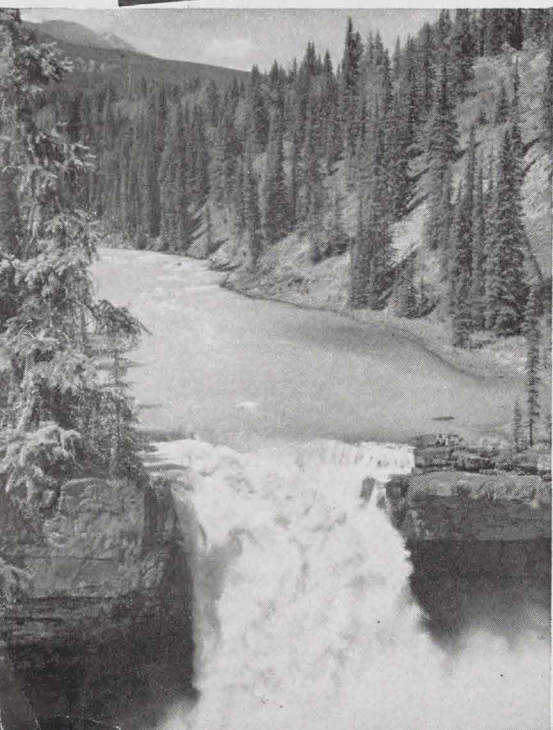
MOUNT ROBSON, B.C.
Monarch of the Canadian Rockies



CANADIAN NATIONAL *Serves all Canada*

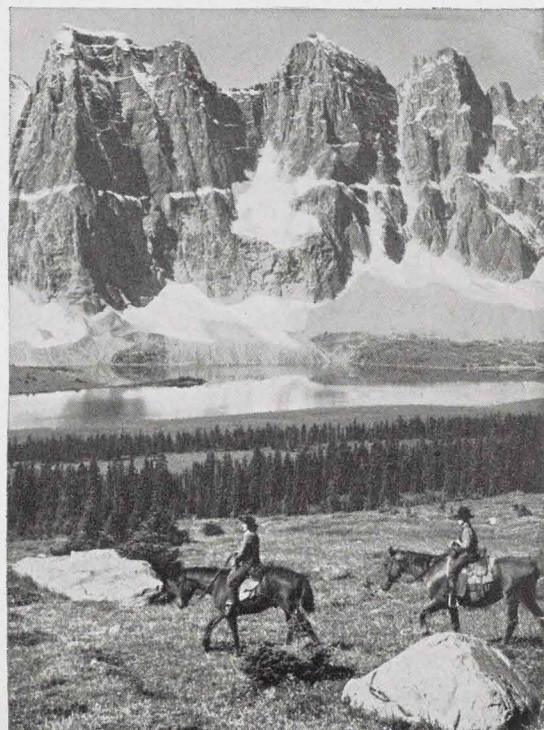


Dolly Lake, hemmed in by towering peaks, the greatest Dolly Varden lake in the Canadian Rockies.



Snake Indian Falls near Jasper.

*Amethyst Lake in Tonquin Valley,
Jasper National Park.*



The Magnificent

CANADIAN ROCKIES

EXTENDING north from the international boundary for more than 400 miles in British Columbia and the western part of Alberta are the breath-taking Canadian Rockies, marshalled into a phalanx of closely set mountains sweeping on in substantial unity. Those who have experienced the spell of this region know how inadequately words express its charm; to them come new delights with each recurring visit—delights shared with the newcomer and amplified in the sharing.

In this unspoiled alpine kingdom, hallowed by history, by Indian legend, and by the romance of the fur traders, are tremendous peaks that lift their heads beyond the clouds, and black canyons that brace their feet in unimaginable depths; glaciers that creep down from the frozen desolation of alpine heights and the black walls of precipices rising to shut out the very light of day.

But these are softened by luxuriant evergreen forests; by smiling green valleys "murmurous with trout-filled streams"; by the airy veils of silvery waterfalls tumbling against black precipice or green forest and tangling the rainbow in their folds; by the brilliance of alpine uplands sparkling with millions of flowers, and by innumerable magically tinted lakes.

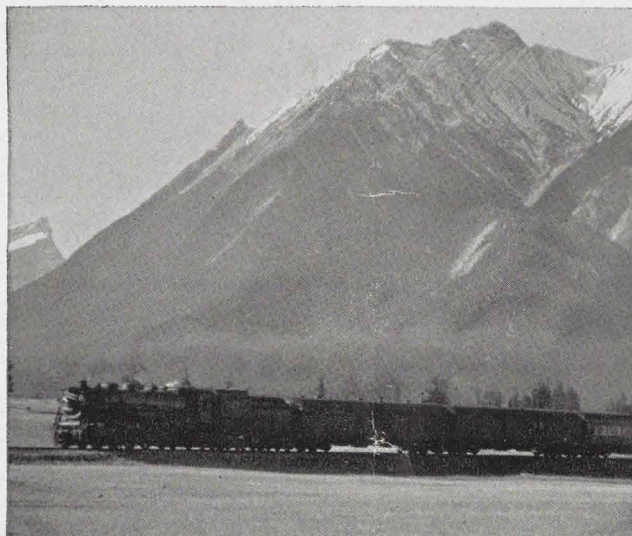
Dominating this magnificent mountain region is the "Triangle Route" of the Canadian National Railways—an 1,850 mile travel trail crossing four mighty mountain ranges by two different routes. A study of the map on the back cover depicting the topography and geography of this complex assemblage of mountain groups will show how apt is the name "Triangle Route". The easterly leg extends from Jasper—America's largest mountain park and one of the great playgrounds of the Continent—through the Yellowhead Pass, past Mount Robson, monarch of the Canadian Rockies, and down beside the roaring gorges of the Thompson and Fraser Rivers to Vancouver.

From Vancouver the westerly leg extends northward through the calm waters of the protected Inside Passage to Prince Rupert.

Eastward from Prince Rupert the train follows the Skeena, "River of Clouds", to the quaint Indian village of Kitwanga, with its fantastic totem poles. A few miles

further on passengers view in silent wonder Bulkley Gate, through which the river hurls itself, far below. By early morning comes once more the huge, silver crested bulk of Mount Robson and its attendant peaks. Thence the return to Jasper, the "Triangle Route" completed.

Along the route of "The Continental Limited", daily transcontinental train of the C.N.R.





Mount Robson, 12,972 feet, monarch of a great mass of peaks rising on all sides for hundreds of square miles.



Berg Lake, at the foot of Mount Robson, is dotted with icebergs which are continually breaking away from the Tumbling Glacier.

MOUNT ROBSON PARK, B.C.

*800 square miles of awe inspiring grandeur directly adjoining
America's largest mountain playground—Jasper National Park*

Dominating this British Columbia forest reserve is the magnificent Mount Robson, king peak of the Canadian Rockies. With glaciers hanging on three sides down to green valleys, and blue lakes nestling at its feet, it stands superb in majesty and beauty.

The apex, that is so clearly silhouetted against the sky, ever carries a glistening mantle of snow, or sometimes veils itself in wind-swept wreaths of clouds. Mighty peaks are its courtiers, many of which, if removed from the vicinity of Mount Robson's tremendous bulk would in themselves be centres of attraction. Mount Whitehorn, 9,059 feet, on the north-west face; Mount Resplendent, 11,173 feet on the north-east face, and numerous other peaks, form the entourage of this monarch.

Even the brief glimpse caught of the glorious upper summit from the Canadian National Railways lines is thrilling, but to behold the mountain in all its magnificence one must take a trip to its base, and see it at close view. The park is entered at Mount Robson or Emperor stations—a couple of hours train ride out of Jasper.

The route in to the foot of Mount Robson, by way of the Grand Forks River, lovely Lake Kinney, and the Valley of a Thousand Falls, will tax the most ample vocabulary to describe. Every mile of the winding way opens up new vistas and brings within the range of vision new glories in hanging glaciers, rock walls, silver streams tumbling from dizzy heights, and more distant peaks.

The Robson Glacier and the ice-filled basin from which it flows extend back from the pass summit for some nine miles along the eastern flank of the mountain and constitute the Robson Cirque. The wonderful creations of ice and snow accumulated there make the area one of the wonders of the Canadian Rockies, and its fame has gone far and wide. The massif with its glaciers and glacial lakes covers an area of over thirty square miles and measures three miles through at the

base. It rises one and a half miles into the air above the summit of the pass.

Much is expected of Mount Robson. It is the loftiest peak in the Canadian Rockies; it has been scaled only a few times in its tremendous history. Its beauty of form, its magnificent armour of ice, its vast solidity—which indeed entitles it to stand with Gibraltar as a symbol of towering strength and incompressibility—makes it supreme among mountain tops.

ACCOMMODATION IN MOUNT ROBSON PARK

Hargreaves & Chesser maintain a "Dude Ranch" at Mount Robson station and a bungalow camp at Berg Lake, as well as a complete outfit of well trained mountain horses and capable guides to handle the trail riders over miles of established trails into beautiful scenic areas. Full information and reservations can be obtained direct from Hargreaves & Chesser, Mount Robson, B.C., or at the Motor Transportation Desk, Jasper Park Lodge, Jasper National Park.

MOUNT ROBSON DUDE RANCH

The Mount Robson Dude Ranch, the buildings of which are of log construction, is the centre or starting point for all activities in the Mount Robson area. This Ranch is open June 15 to August 26 each year.

The atmosphere of the Ranch is informal and restful. The products of the garden and dairy, together with the home cooking and the magnificent scenery, leave little to be desired.

Accommodation consists of: Main building, containing kitchen and dining room, bedrooms and bathroom; heated sleeping cabin with bedrooms and sitting room; three heated cabins with two bedrooms, sitting room and bathroom.

RATES

\$65.00 per person, per week. This includes transfer from station, meals and accommodation and saddle horse for seven days.

For those who do not desire the above special weekly combination rate the following will apply: \$8.00 per day per person, \$48.00 per week per person, American Plan. Motor transfer between station and ranch, including hand baggage.

Single meals: Breakfast 80c, Luncheon \$1.10, Dinner \$1.35.

WHAT TO DO IN MOUNT ROBSON PARK

ONE DAY TOUR No. 1—Arrive Mount Robson, transfer to Ranch and leave immediately for Berg Lake and Tumbling Glacier, arriving Berg Lake Bungalow Camp in time for dinner. Remain overnight and return to Mount Robson in time to make Westbound train connections. Price \$40.00 per person.

TWO DAY TOUR No. 2—Arrive Mount Robson, transfer to Ranch and leave immediately for Berg Lake and the Tumbling Glacier, arriving Berg Lake Bungalow Camp in time for dinner. Remain overnight. Next day take boat trip on the lake with guide to the Tumbling Glacier, one of the few of its kind in the Canadian Rockies. Remain overnight and leave following morning for Mount Robson for connection with Westbound trains. Price \$50.00 per person.

THREE DAY TOUR No. 3—Arrive Mount Robson, transfer to Ranch and leave immediately for Berg Lake and the Tumbling Glacier, arriving at Berg Lake Bungalow Camp in time for dinner. Remain overnight. Following morning take boat trip on Lake with guide to Tumbling Glacier. Remain overnight and following day take all-day saddle trip with guide to Coleman Ridge (lunch served on trail) to view the panorama of scenic gems in the Mount Robson area. Return to Berg Lake Bungalow Camp, remain overnight and leave following day for Mount Robson to connect with Westbound trains. Price \$60.00 per person.

Extra days at Berg Lake Bungalow Camp \$8.00 per day per person.

THE TRIP TO BERG LAKE

One of the finest scenic trail trips in the Rockies is from Mount Robson "Dude Ranch" to Berg Lake, a distance of 16 miles, four of which are covered by automobile and twelve by saddle horse. From the cedar groves through which the trail runs, across the canyon of the Fraser River, up the banks of the Grand Fork River, which roars along over rapids and cascades to that placid sheet of water, Kinney Lake, the visitor is constantly being presented with totally different aspects of Mount Robson. From Kinney Lake the trail enters the Valley of a Thousand Falls, whose walls reach up for 6,700 feet, with waterfalls cascading down them all the way along. Over the "Flying Trestle", past White Falls, Falls of the Pool, and Emperor Falls, the last of which is visible from many points on the trail, and to the shores of Berg Lake, one is greeted by new and ever-changing scenes with each turn of the trail.

In the past it is just possible this saddle trip to Berg Lake has been regarded as one too strenuous or difficult, or as taking up more time than can be spared. The following illustrates how quickly and comfortably this scenic trail trip can be made. Guests arriving either from the east or west on Canadian National trains may leave Mount Robson Bungalow Camp immediately on arrival and arrive at Berg Lake Bungalow Camp in time for evening dinner. This is possible by using motor car for the first four miles, or almost to Kinney Lake and then saddle horse for the remaining twelve miles to Berg Lake, the entire journey being made in daylight. If necessary, the return trip can be made under the same conditions, arriving Mount Robson station in time to make outgoing trains the next day.



Berg Lake camp—on the shore of Berg Lake.

This scenic trail is a photographer's paradise. Mr. Hamilton Jones, of Buffalo, filmed it in color and won the first World's Amateur Motion Picture Championship with it in 1937.

BERG LAKE BUNGALOW CAMP

Berg Lake Bungalow Camp is located 5,500 feet above sea level on the shore of Berg Lake and directly opposite one of the few tumbling glaciers in the Rockies. Here good food and comfortable accommodation are available. Boating on Berg Lake, hiking over Robson and Coleman Glaciers, many mountain climbs and hiking or saddle trips to beautiful areas high up in the passes are all possible.

For those desiring to visit Berg Lake Bungalow Camp who are not interested in foregoing Tours Nos. 1, 2 and 3 covering inclusive features the regular rate of \$20.00 covering car and saddle horse (transportation only) Mount Robson to Berg Lake and return is available.

"The Niagara of the Rockies", Emperor Falls, a magnificent cataract leaping over a precipice 500 feet high. Seen on the trip to Berg Lake.



Rates at Berg Lake Bungalow Camp, \$8.00 per day or \$48.00 per week per person. American Plan.

Rates for large parties arranged on application.

TRIPS TO BE MADE FROM BERG LAKE

No. 1.—All-day saddle horse and hiking trip to Coleman Glacier, hiking up the glacier, through Snowbird Pass, crossing alpine meadows, Lynx Mountain, and returning over Robson Glacier. Price, including trail and glacier guide, also saddle horse \$25.00 for one person; each additional person, \$5.00.

No. 2.—All-day saddle trip to Coleman Glacier. Price, including guide, \$15.00 for one person, \$5.00 each additional person.

No. 3.—Saddle trip to Mural Glacier. Here may be found interesting trilobite fossils. Price, including guide, \$10.00 for one person; each additional person \$5.00.

No. 4.—All-day saddle trip to Moose Pass. Price, including guide \$15.00 for one person; each additional person, \$5.00.

No. 5.—Ride up to Mumm Basin, elevation 7,500 feet. Here may be had the finest view of Mount Robson, Mount Resplendent, Berg Lake and Lake Adolphus. Price, including guide, \$10.00; each additional person, \$5.00.

No. 6.—A delightful circle trail, camping and fishing trip to Idalene Pass, and returning by a different route. This takes the tourist through nine high passes, and permits excellent fishing in three camps. All species of big game can be seen from the trail, which is as follows: To Palm Creek, 15 miles; to Smoky River flats, 13 miles; over Vimy Ridge and Byng Pass, 14 miles; Stony River, 14 miles (fishing); to Blue Creek, 14 miles (excellent fishing); over Maynard Pass to Idalene Pass, 16 miles; down the Snaring River, 16 miles (fishing); to Paint Brush Pass, 16 miles; through Grant Brook Pass (fishing), to Colonel Pass, 14 miles; to Moose River, 14 miles; to Moose Pass, 16 miles; back over Robson Pass to Berg Lake Camp, 14 miles. Time, 14 days at least. Price \$40.00 per day for two persons; \$10.00 per day each additional person over two.

No. 7.—Camping trip to Jasper via Moose Pass, Colonel Creek, etc., through the famous Tonquin Valley, via Amethyst Lake, to Jasper. Time, 10 days. Price \$40.00 per day for minimum of two persons; \$10.00 per day each additional person.

CLIMBING

Mount Robson Park—the gem of all for Alpine climbing. This magnificent snow and ice region, containing the highest mountain in the Canadian Rockies, is without peer for the Alpinist. Within two or three miles of Berg Lake Camp are many climbs suitable for amateurs, and three or four climbs for which experienced guides are required.

CAMPING TRIPS

Camping trips of any duration can be arranged, as desired, on the basis of \$40.00 per day for two persons, and \$10.00 per day for each additional person. This includes pack and saddle horses, guides, cook, and accommodation while on the trail and in camp.

IDEAL FOR HUNTING BIG GAME

A most satisfactory hunting district and one easily and quickly reached from Jasper or Robson Parks. The country harbors caribou, big-horn sheep, moose, goat, grizzly and black bear, as well as small fur-bearing animals. The guides in this territory are efficient, well equipped, and thoroughly acquainted with the district. *Enquiries should be addressed by those contemplating a hunting trip in this area to General Passenger Agent, Canadian National Railways, at Vancouver or Winnipeg.*

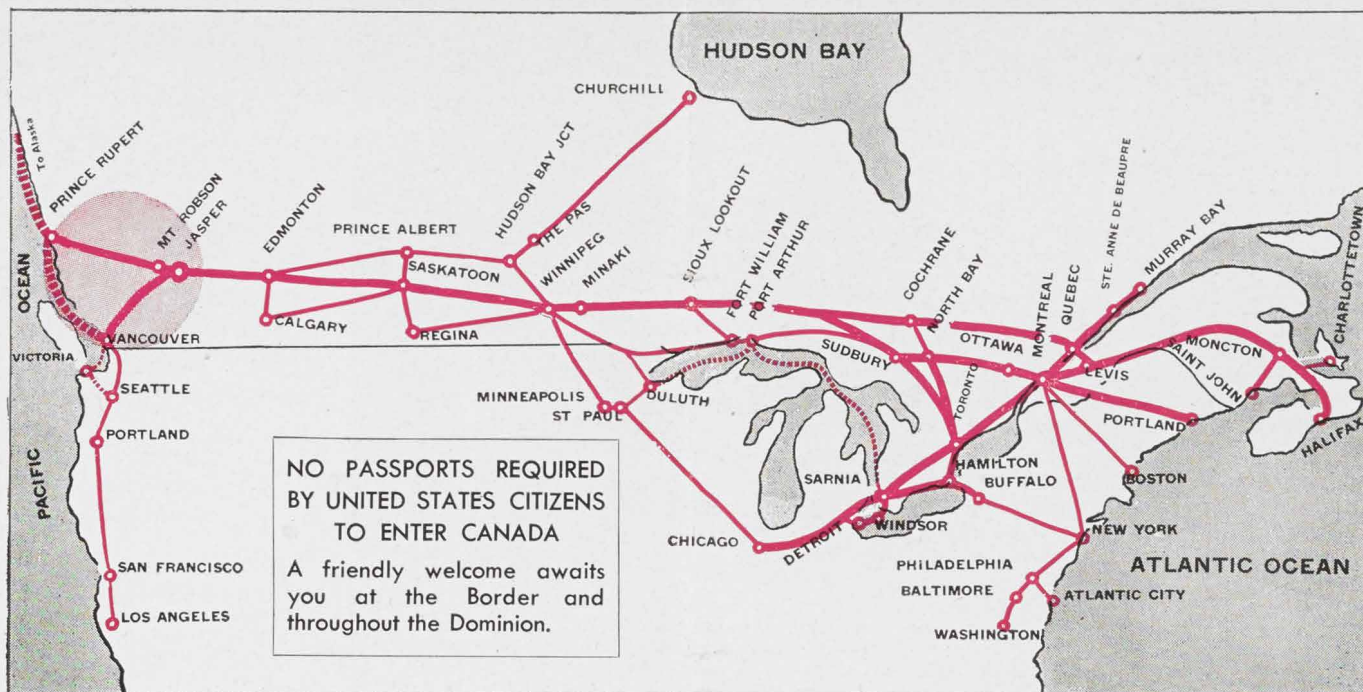
SADDLE AND CAMPING TRIPS FROM JASPER NATIONAL PARK TO MOUNT ROBSON

VIA NORTH BOUNDARY.—That portion of Jasper Park which lies north of the main line of the Canadian National Railways contains numerous majestic peaks, passes rich in mountain flora, and an abundance of wild game (moose, caribou, deer, sheep, goats and bears), as well as good lake and stream fishing. Through this interesting country a twelve-day trail trip is made from Brewster's Black Cat Ranch to Mount Robson. The route lies through the northern portion of Jasper Park via Solomon Summit,—Rock Lake—the valley of the Snake Indian River—through Byng Pass and Twin Three Lakes—up the valley of the Smoky River to Adolphus Meadows and Berg Lake,—then through the Valley of a Thousand Falls to Mount Robson station.

VIA TONQUIN VALLEY.—From Jasper, by motor, to View Point near Cavell Lake where guides, saddle horses and pack horses are stationed to continue the trip into Tonquin Valley; thence via Mount Fitzwilliam to camp at Yellowhead Pass near Lucerne. From here the trail leads to the upper waters of the Miette River, thence through Moose Pass to Calumet Creek and on through Robson Pass to camp on Berg Lake. The last lap of the trip is by Tumbling Glacier, Emperor Falls, Valley of a Thousand Falls, Kinney Lake and Grand Forks to Mount Robson Station. These trips are operated under the management of Fred Brewster's Rocky Mountain Camps Ltd., Jasper, Alta.

NOTE: In advertising the above services the Canadian National Railways act only in capacity of Agents. They have investigated the Outfitters handling these services and recommend them to guests, but do not assume any legal responsibility whatsoever in connection with their services.





Canadian National Railways map showing principal lines and routes from Canadian and United States centres to the Canadian Rockies. The Continental Limited, famous through train between Montreal—Toronto—Winnipeg—Jasper—Mount Robson—Vancouver, carries all-steel air conditioned equipment. On this train there is through sleeping car service between Montreal, Toronto, Vancouver. Through sleeping car from St. Paul—during summer season—routing via Winnipeg, brings United States midwest points within two days' journey of the Canadian Rockies.

Convenient schedules, comfortable trains and steamer enable the "Triangle Route" to be made in either direction, and starting at any point on the Triangle. Spiced with a variety of scenery and activity, it is well worth while to plan your tour ahead for the maximum of vacation pleasure. Alternative routes via Prince Rupert will be dependent on the operation of C.N.S.S. steamer service between Prince Rupert and Vancouver.

The Across Canada route of the Canadian National Railways, though flanked by the highest peaks in the Canadian Rockies, including Mount Robson (12,972 feet), crosses the mountains at the lowest altitude and easiest gradient of all trans-continental lines. This is a factor of particular interest and importance to travellers unaccustomed to, or unable to stand, high altitudes.

Pyramid Falls, B.C., on the route of "The Continental Limited" between Red Pass Junction and Blue River.

Hell's Gate on the Fraser River—near Boston Bar.



JASPER

4,200 sq

THE largest national park in America—Jasper is an enchanted realm of glittering peaks, mirror lakes, mighty glaciers, swift-flowing rivers and turbulent streams—an unsurpassed region of scenic splendor.

In addition to being a national playground, Jasper is a game sanctuary and wild life roam there in security and freedom. The areas immediately beyond the park boundaries are big game country, and attract hunters the world over.

In Jasper National Park is located Jasper Park Lodge—show-place of the Canadian Rockies. The main lodge, and rustic bungalows, having accommodation for 650 guests, are located beside Lac Beauvert in a jewel-like setting overlooking the broad Athabaska Valley. There are canoes on the lake, an open-air heated swimming pool beside it, and there is fishing for Rainbow and speckled trout in nearby streams and lakes. For the trail rider there are sure-footed mountain ponies and hundreds of miles of trails.

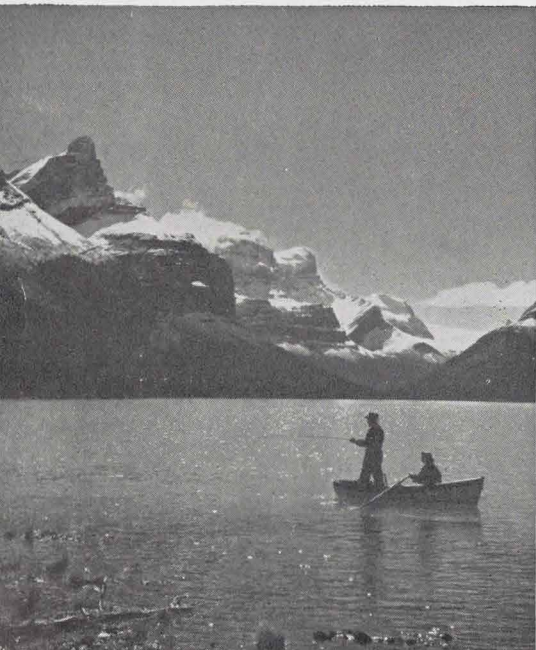
The Jasper Park Lodge Golf Course is world-famous. Its 18 holes of championship length (6,700 yards) are laid out in the heart of some of the most rugged country in the Canadian Rockies, yet there isn't a "puff" on the whole layout.



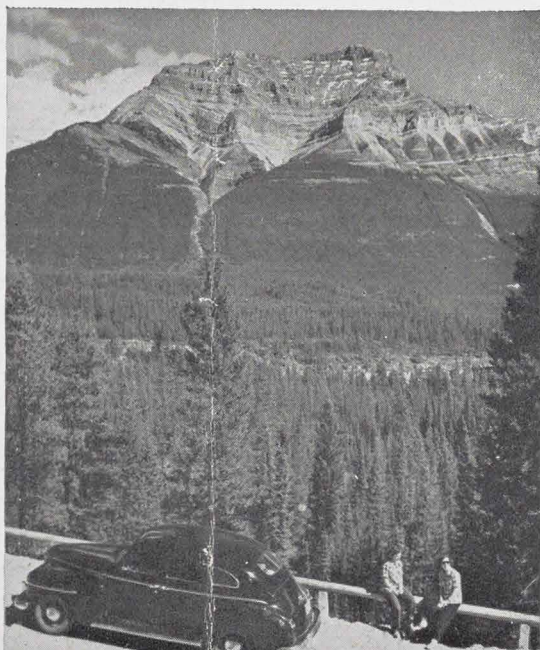
Natural Color Photograph

Encircled by friendly peaks which rim the broad Athabaska Valley, and set amid colorful flowers and velvet lawns sloping down to the shore of Lac Beauvert, Jasper Park Lodge has the appearance of a lovely alpine village. Paved walks connect the individual bungalows and lead to the Main Lodge.

The glacier-fed waters of Maligne Lake offer excellent speckled trout fishing.



Mount Kerkeslin, as seen from the Columbia Icefield Drive.



NATIONAL PARK

quare miles of scenic playground

More than 200 miles of highways fan out from the lodge leading to regions of scenic grandeur. The 20-mile drive to the foot of Mount Edith Cavell is one of the more popular drives. Then there is the Columbia Icefield drive—the largest and most impressive icefield south of the Arctic Circle.

Tennis on specially made shale courts, hiking and dancing are other diversions.

Jasper has much to offer the camera fan. In the immediate vicinity of the lodge will be found playful bears and timid deer. From the highways and trails mountain sheep and goats, elk, moose and other wild life may be "shot" in their natural environment. The colorful mountains and glaciers, rivers and lakes, are a challenge to the black-and-white and color photographer alike.

No description of Jasper National Park is complete without reference to Maligne Lake, largest glacial lake in the Canadian Rockies. Rimmed by towering peaks, waters radiant with color, Maligne Lake is a breathtaking sight. Gamey speckled trout await to do battle with the angler. Equally spectacular is the Tonquin Valley with its Ramparts and its rainbow trout waters. The Sky Line Trail and the Sawdust Trail are riding features that only Jasper can provide.

Top—Mount Athabaska and Glacier, Columbia Icefield.

Centre—Colorful Pyramid Mountain overlooks Jasper's championship golf course.

Below—Jasper Park Lodge lies in a wide crescent on the shore of colorful Lac Beauvert. Beyond is Roche Bonhomme, the Old Man.





* An 1850 mile journey by land and sea

WESTBOUND, YOU START AT JASPER, EASTBOUND
AT VANCOUVER

There's a further choice. You can go clockwise or counter-clockwise around the Triangle. Either way you miss none of the highlights.

*See map of "Triangle Route" on back cover.

The Canadian National Railways skirt the Fraser River in British Columbia.



FIRST LEG OF THE TRIANGLE

WHEN the Canadian National train leaves Jasper on its five hundred and thirty-five mile trip to Vancouver, it climbs up the Yellowhead Pass and the Continental Divide. Here, where Alberta meets British Columbia, the waters are parted, some to travel north to the Arctic, some to drop to the Pacific.

About 45 miles from Jasper is Red Pass Junction, the point of divergence for the two railway lines, one going up to Prince Rupert and the other down to Vancouver. They remain in sight of each other until Mount Robson is reached.

After Robson, the next great single spectacle is Pyramid Falls, thundering down three hundred feet, spreading out, in a shower of mist and rainbows, and hurtling itself almost on the railway track.

The railway line then crosses the Thompson River several times, every turn of the track unfolding vistas of rugged and magnificent terrain. Hell's Gate, on the North Thompson, is the first of two Hell's Gates viewed from the train. Eight miles of turbulent water, hemmed in between rock walls, suddenly find freedom here.

En route is Kamloops, the centre of dozens of lakes, all famed fishing waters with lodges catering especially to fishermen for Kamloops trout. Kamloops is also the gateway to the renowned Okanagan Fruit Valley. Located north of Kamloops is Wells Gray Park, 1,800 square miles in area. The reserve, which offers excellent fishing and hunting, may also be reached from Blue River.

The more famous Hell's Gate is in the Fraser Canyon. This Canyon, south of Boston Bar, has an average depth of two hundred and fifty feet. At Hell's Gate, the waters of the mighty Fraser are forced into a channel no more than a hundred feet wide, and they lash and swirl with a dizzying speed and terrific force.

Beyond the Canyon, the Fraser runs down to the ocean, large and free, with its strength increased rather than abated, but quieter mood. It spreads out to make way for shipping at New Westminster. Now comes the city and the sea.

Cisco Bridges, B.C., on the Fraser River route of "The Continental Limited".

10





Business section, Vancouver, British Columbia.



The picturesque Inner Harbour, Victoria, B.C.

Canada's Evergreen Playground

VANCOUVER-VICTORIA

MARVELLOUS CLIMATE

AT VANCOUVER, you will want to make your headquarters in the Hotel Vancouver offering the finest accommodation on the Pacific Coast. Its smart appointments and many social conveniences, all carried out in the simple, modern manner, will make your stay as exciting as a "first night" performance.

From its commanding Panorama Roof you have an unsurpassed view in every direction. There is the busy harbour and, behind it, the timbered slopes of the North Shore mountains rising up to rocky crests. There is Stanley Park in the heart of the city, a thousand acres of glorious forest, the boast of all Vancouver.

Below you lies the throbbing heart of the city, a gay, cosmopolitan city at one of the world's crossroads. It has its smart shops and theatres, its Chinatown, its colony of black-bearded, turbaned Hindus!

All summer long attractive, coastwise steamers sail on day-long trips through adjacent waters.

VICTORIA

Victoria, "A Charming Bit of Old England", is a delight

MAGNIFICENT SCENERY

to the summer visitor because of its serene atmosphere.

Victoria is a "flower city". You are quick to notice its homes with their well-tailored lawns, spreading, leafy trees, neatly trimmed hedges and profusion of bloom. Victoria, too, boasts its scenic drives. The famed Butchart Gardens are the showplace of the Pacific Coast, 16 acres of glorious colour, a fairyland woven from flowers, shrubs, trees, streams and lawns. Mount Douglas Park, a seaside forest playground; Mount Tolmie Park, and the Dominion Government Astrophysical Observatory, are among the many places of interest. The Malahat Drive, too, is spectacular with its pastoral scenery and marvellous vistas of forest and stream.

From July to September the bays and inlets of Vancouver Island abound with salmon. Sea fishing is always spectacular, of course; but there is also fine stream fishing that will delight the fly enthusiast.

Vancouver Island is indeed Treasure Island and Victoria its fitting capital!



Hotel Vancouver, Vancouver, B.C.

Operated under the joint management of the Canadian National and Canadian Pacific Railway Companies.

Cruise in Comfort on the famed Inside Passage

SECOND LEG OF THE TRIANGLE

THE ROUTE from Vancouver to Prince Rupert is nearly always a smooth sea voyage. To starboard lies the mainland and to larboard a long, broken, irregular chain of islands. The only open sea comes when Queen Charlotte Sound is crossed in less than two hours. A voyage, with the sea-gulls wheeling in the breeze, with a keen, salt wind to whip up an appetite for the abundance of ship's fare, with sports and long walks around the deck and dancing at night—such is the cruise between Vancouver and Prince Rupert, B.C.

PRINCE RUPERT

With its parks and their splendid Haida totem poles, one of the world's largest cold storage plants and its wharves with their sturdy fishing craft at anchor, there is ample to see and do at Prince Rupert. For the tourist who prefers to explore the city at his own leisure, much of interest may be found. Several excellent Indian totem poles are placed at various vantage points throughout the town. The collection of totem poles is one of the best on the Pacific Coast. Curio and souvenir hunters will find unique shops carrying a varied assortment of native Indian work and local souvenirs. Then, too, there is the Museum which contains a good collection of articles of interest.

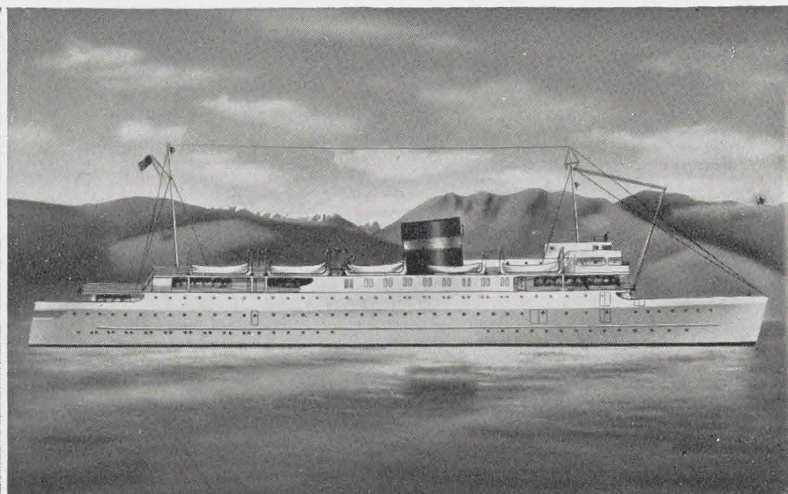
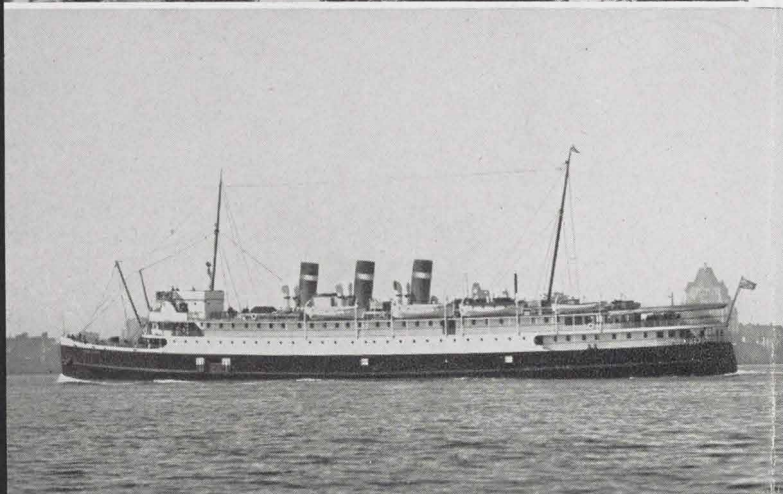
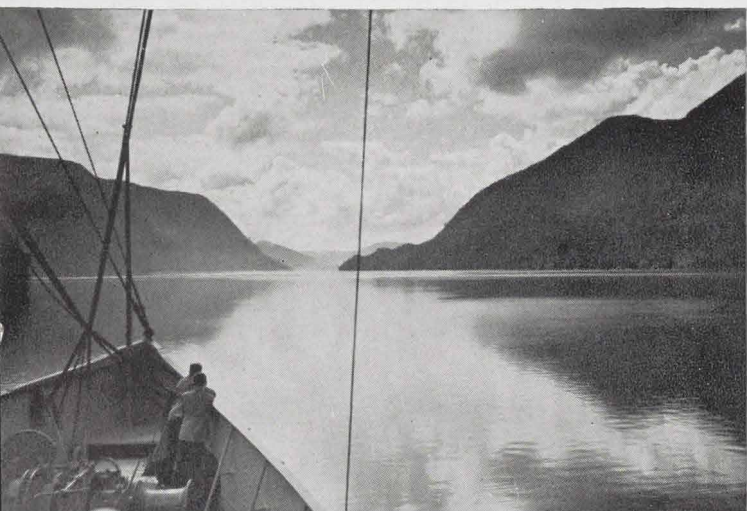
Top—Typical Inside Passage scene.

Centre—City of Prince Rupert, B.C.

Lower left—SS. "Prince Rupert".

Lower right—Architect's sketch of Vancouver-Alaska service steamship being constructed for the Canadian National Railways.

12





Totems at Kitwanga, B.C.



Bulkley Gate on Bulkley River and (below) a Tweedsmuir Park scene, B.C.

THIRD LEG OF THE TRIANGLE

THE ROUTE from Prince Rupert to Jasper lies through a most interesting part of the country. No less than five extensive valleys are traversed. They are, in order, the Skeena, the Bulkley, the Endako, the Nechako, and the Fraser. Each is rich in scenic charm, and beauty, and each has its own peculiar outstanding features.

Following the mountain-guarded Skeena, the train passes quaint fishing villages and canneries perched on piling high above the water. At Kitwanga is the site of a most interesting Indian village. Here, towering 25 to 30 feet above the surrounding dwellings, are a number of totem poles which heads of families erected in the past to record their origin and prowess.

Leaving Hazelton, the valley of the Bulkley River is entered. The most memorable spectacle in the valley is Bulkley Gate, which the waters of the river hewed out of solid rock eight feet thick.

Leaving McBride, lofty majestic mountains, standing as worthy monuments to five great leaders, greet the eye. These are Mount Sir John Abbott, Mount Sir Wilfrid Laurier, Mount Sir John Thompson, Mount Stanley Baldwin and Mount Sir Mackenzie Bowell. Then into view comes Mount Robson, and, in a few hours the train glides to a stop at Jasper, the end and the beginning of the great Triangle.



TWEEDSMUIR PARK, B.C.

IMMEDIATELY to the south of Burns Lake, B.C., on the Canadian National line from Jasper to Prince Rupert, with the Coast Range for its western boundary, lies Tweedsmuir Park. The northern entrance is via Burns Lake, where a motor road leads to Ootsa Lake—the first stage of the journey for those entering the Park from the northern portal, and the grand finale for those who come in from the south, of which Bella Coola is the recognized gateway. Within the Park's area of 5,400 square miles is some of the finest mountain, lake and river scenery in North America. Burns Lake and Stuie, the latter being some 40 miles from Bella Coola, have comfortable and well equipped lodges and complete facilities for canoe and trail parties, and similar facilities are available at Ootsa Lake and Bella Coola. Travel in the Park is somewhat restricted to saddle and canoe and the accommodation to trail camps. Fishing is excellent and big game plentiful. For the still and motion-picture camera, its newness, its color and its unique resources of big game make Tweedsmuir Park an unrivalled field.

ACCOMMODATION IN THE CANADIAN ROCKIES

Vancouver Island and the vast territory in Alberta and British Columbia embraced in the region known as the Triangle Route of the Canadian Rockies and reached by the Canadian National Railways, has long been known for its big game and fishing possibilities. In recent years there has been a great development in lodge and camp accommodation, and these will increase in number. Enumerated below are a number of the more important lodges which cater to the tourist visitor who desires not merely fishing and hunting but also the atmosphere and scenery of this rugged country as a background for his vacation.

JASPER NATIONAL PARK, ALBERTA

(See pages 8 and 9)

Visitors to this famed vacation region will find accommodation to suit every purse and every taste. In addition to Jasper Park Lodge on Lac Beauvert (650 guests) the following hotels and camps offer excellent accommodation at reasonable rates: Athabasca, Astoria, Pyramid, Brewster's Amethyst Lake Camp, Medicine Lake Chalet, Maligne Lake Chalet, Y.M.C.A. Camp, Columbia Icefield Chalet, Pine Bungalow Cabins, Kiefer's Cabins, Rocky Mountain Bungalow Camps.

Outfitters are Major Fred Brewster, Jack Brewster, J. A. Hargreaves, Wilkins & Neighbor, and Stan Kitchen. These outfitters have their headquarters at Jasper, where everything necessary is provided—guides, cooks, pack and saddle horses, camping equipment, provisions, etc.

ATHABASKA FOREST RESERVE, ALBERTA

Major Fred Brewster, P.O. Jasper Park, Alta., operates Brewster's Black Cat Ranch in the foothills of the Rockies on the eastern boundary of Jasper National Park, 35 miles from Jasper or six miles from Brule station, on the main line of the Canadian National Railways. Accommodation for 24 people in separate log bungalows. Miles of excellent trails, fishing, game photography; well trained mountain ponies and other facilities for extended trail trips.

Lt.-Col. A. Innes-Taylor, P.O. Entrance, Alberta, operates the E-B Ranch located 17 miles north of Entrance, 67 miles from Jasper on the C.N.R. main line. Accommodation for 16 people in four cabins. Excellent trails, big game hunting, fishing, canoe trips and the only Beaver Ranch of its kind in Canada. Winter skiing in wilderness country.

MOUNT ROBSON PARK, B.C.

Reference is made on pages 4, 5, 6, to accommodation in Mount Robson Park, under the management of Hargreaves & Chesser. These camps at Mount Robson station and Berg Lake both accommodate fifty guests and comprise comfortable log cabins suitably furnished. Passengers may detrain at Mount Robson station on the Jasper-Vancouver line, or at Emperor on the Jasper-Prince Rupert line, the two stations being but a few hundred yards apart. Guides, horses, and camping equipment are obtainable, and arrangements may be made for trips of any duration. For information as to rates, etc., address Hargreaves & Chesser, Mount Robson.

KAMLOOPS DISTRICT, B.C.

BAR C GUEST RANCH.—Henry Cornwall, Cherry Creek, Kamloops, B.C. 14 miles.

FLYING U RANCH.—Situated on the shore of Green Lake, 70 miles from Ashcroft Station on C.N.R. Ranch car meets patrons at Ashcroft. Accommodation for sixty guests in attractive rustic private cabins. Activities consist of fishing, boating, riding, pack trips, polo and hunting. For further information and rates write Jack Boyd, Manager, 70-Mile House, Cariboo Road, B.C.

KNOUFF LAKE.—Apply Mr. P. Casey, Knouff Lake, B.C., 27 miles from Kamloops.

LE JEUNE LODGE on Lac Le Jeune—22 miles from Kamloops. Miss D. E. Costley, Box 8, Kamloops, B.C.

100-MILE HOUSE RANCH.—87 miles north of C.N.R. station at Ashcroft on the Cariboo Road. Maximum accommodation for twenty-five persons provided in Main Lodge and three separate log cabins. Horseback riding is the main activity, others include weekly riding tours, fishing, boating and bathing at Canim Lake, bird shooting and big game hunting. For further information and rates write Lord Martin Cecil, 100-Mile House, B.C.

FRASER RIVER, B.C.

Siska Lodge and Cabins, with accommodation for fifty, is situated not far from the railway line at Cisco Station. The Lodge is constructed of logs and offers very good accommodation. The surroundings are very picturesque, the Lodge being situated right in the Fraser River Valley. For rates write F. Lowe, Cisco, via Lytton P.O., B.C.

HARRISON LAKE DISTRICT, B.C.

The Harrison Lake district centres on the forty-five mile glacial lake of the same name, set like a jewel in the Coastal Range. Guarded by towering Mounts Douglas and Cheam, it provides a most attractive and scenic vacation region.

Harrison Hot Springs, internationally known as a vacation resort and health centre, is close to the main line of the Canadian National Railways (sixteen miles from Chilliwack station), 75 miles from Vancouver. The Hot Springs Hotel, open the year round, is a modern hotel of brick construction and entirely fireproofed by sprinkling system, standing among acres of beautiful gardens and calm lagoons. For information communicate with Hotel Manager at Harrison Hot Springs, B.C.

STUART LAKE DISTRICT, B.C.

Located on Half Way Island in Stuart Lake is Culchoe-Nu Lodge catering to the vacationist, the fisherman and the hunter. It consists of a main lodge and several comfortable cabins varying in size, some for parties of six.

Rowboats, canoes, outboard motors and licensed guides are available. Trips can be arranged for fishing, camping or sight-seeing through a picturesque chain of lakes and rivers with over 200 miles of water routes.

The lodge is reached by a 42-mile motor trip to Ft. St. James, thence a 22-mile water trip.

For information write or telegraph Mrs. H. W. Smith, Fort St. James, B.C.

TWEEDSMUIR PARK, B.C.

A trip replete with interest is the 300-mile circle tour by motor boat and canoe extending from Ootsa Lake by the Tahtsa and Whitesail River to Whitesail Lake. Ootsa Lake, 40 miles distant from Burns Lake Station, is reached by motor. Information in regard to this trip may be obtained from J. W. McNeill or E. Van Tine, Ootsa Lake P.O.; B. R. Harrison, Wistaria P.O.; Frank Henson, Marilla P.O.; Oscar L. Anderson, Grassy Plains P.O.; J. N. Nekon, Noralee P.O.; all via Burns Lake. Also R. S. Traquair, Prop., Lakeshore Lodge, Burns Lake.

Tweedsmuir Lodge, located 42 miles from Bella Coola on the southern boundary of Tweedsmuir Park, nestles amidst magnificent mountain scenery. Riding, hiking, fishing, hunting, etc., are a few of the activities to be enjoyed. For information and reservations communicate with T. A. Walker, Proprietor (Stuie), Bella Coola, B.C.

Canadian National Railways

PASSENGER AGENCIES



The bedroom-buffet-lounge cars are air-conditioned. Their club-like atmosphere contributes to the enjoyment of your transcontinental journey.



Appetizing food and courteous service are features of Canadian National Diners.



Mountain observation cars afford passengers wide-vision panoramas of the grandeurs of the Canadian Rockies.

CANADA AND UNITED STATES

Belleville, Ont. 243 Front St.
Boston 16, Mass. 497 Boylston St.
Brantford, Ont. 153 Colborne St.
Brockville, Ont. Cor. King and East Market Sts.
Buffalo 3, N.Y. 13 West Genesee St.
Calgary, Alta. 218 Eighth Ave., West
Charlottetown, P.E.I. C.N. Rys. Station
Chicago 3, Ill. 4 South Michigan Ave.
Cincinnati 2, Ohio 206 Dixie Terminal Bldg.
Detroit 26, Mich. 1239 Washington Blvd.
Duluth 2, Minn. 418 West Superior St.
Edmonton, Alta. Cor. Jasper and 100th Sts.
Guelph, Ont. 67 Wyndham St.
Halifax, N.S. Cor. Barrington and George Sts.
Hamilton, Ont. 7 James St., North
Jasper, Alta.* Jasper Park Lodge
	*During Season Jasper Park Lodge is open.
Kansas City 6, Mo. 101 West Eleventh St.
Kingston, Ont. 115 Princess St.
London, Ont. 430 Richmond St.
Los Angeles 14, Cal. 607 South Grand Ave.
Minneapolis 2, Minn. 711 Marquette Ave.
Moncton, N.B. C.N.Rys. Station
Montreal, Que. 384 St. James St., West
New York, N.Y. Rockefeller Centre, 630 Fifth Ave.
Niagara Falls, Ont. 536 Clifton Ave.
North Bay, Ont. 203 Main St.
Oshawa, Ont. 3 King St., West
Ottawa, Ont. 93 Sparks St.
Peterboro, Ont. 324 George St.
Philadelphia 7, Pa. Broad and Chestnut Sts.
Pittsburgh 22, Pa. 355 Fifth Ave.
Portland 3, Me. G.T.Ry. Station
Prince Rupert, B.C. 528 Third Ave., East
Quebec, Que. 10 Ste. Anne St.
Regina, Sask. Union Station

St. Catharines, Ont. 13 Queen St.
Saint John, N.B. 49 King St.
St. Louis 2, Mo. 314 North Broadway
San Francisco 4, Cal. 648 Market St.
Saskatoon, Sask. C.N.Rys. Station
Seattle 1, Wash. 1329 Fourth Ave.
Sherbrooke, Que. 23 Wellington St., North
Sudbury, Ont. 41 Durham St., South
Toronto 1, Ont. N.W. Corner King and Yonge Sts.
Vancouver, B.C. 527 Granville St. Hotel Vancouver
Victoria, B.C. 911 Government St.
Washington 5, D.C. 922 Fifteenth St., N.W.
Windsor, Ont. 364 Ouellette Ave.
Winnipeg, Man. Main St. and Portage Ave.
Woodstock, Ont. 414 Dundas St.

EUROPE

London, S.W. 1, Eng. 17-19 Cockspur St.
London, E.C. 3, Eng. 95 Leadenhall St.
Liverpool, Eng. Cunard Bldg., Water St.
Southampton, Eng. Royal Mail House
Cardiff, Wales 35 St. Mary St.
Glasgow, C. 2, Scotland 107 Hope St.

AUSTRALIA AND NEW ZEALAND

Sydney, Australia "Scottish House", 19 Bridge St.
Melbourne, Australia 360 Collins St.
Wellington, N.Z. Featherston Chambers

ORIENTAL REPRESENTATIVES

Hong Kong J. H. Middlecoot General Agent
Calcutta, India S. P. Healey General Agent

NO PASSPORTS REQUIRED BY U.S. CITIZENS TO ENTER CANADA

A friendly welcome awaits you at the Border and throughout the Dominion.

Spend your American Dollars as your needs arise in Canada. It is not necessary to change them at the Border. You may take out any unexpended portion of your funds. Canadian Law requires that you be paid the official premium set by the Foreign Exchange Control Board, wherever you go in Canada.

In presenting the information on opposite page, the Canadian National Railways have taken every reasonable care to give authentic data. It will be readily understood the Railway is not in a position to assume responsibility for the class of accommodation provided by other than the Railway and the information is therefore given as a guide and from which the intending visitor may make his own selection. Many resorts in the Canadian Rockies, as well as the Pacific Coast tourist bureaux, issue their own literature and same will be gladly furnished by them on request.

The FAMED TRIANGLE ROUTE of the

CANADIAN ROCKIES

