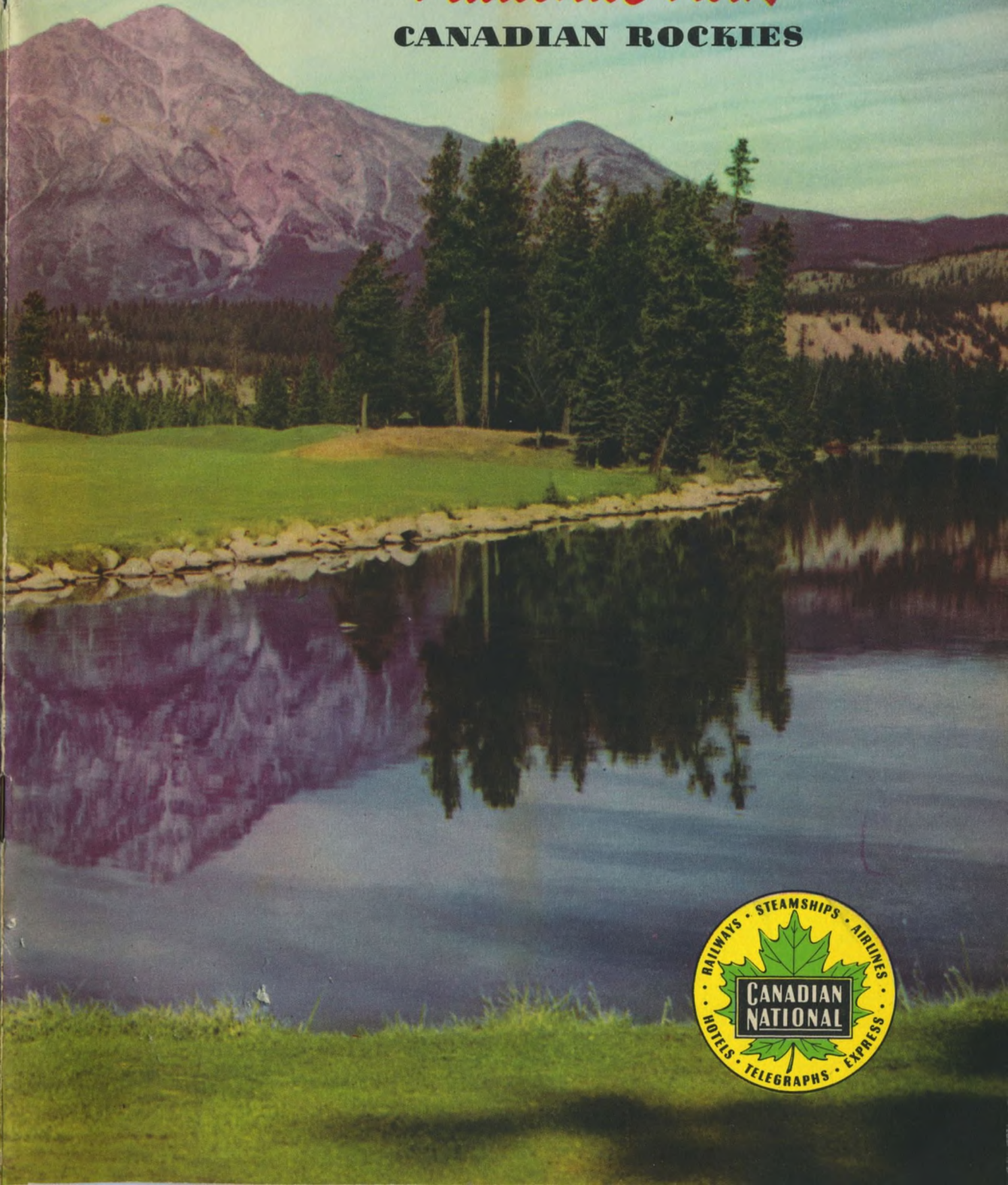


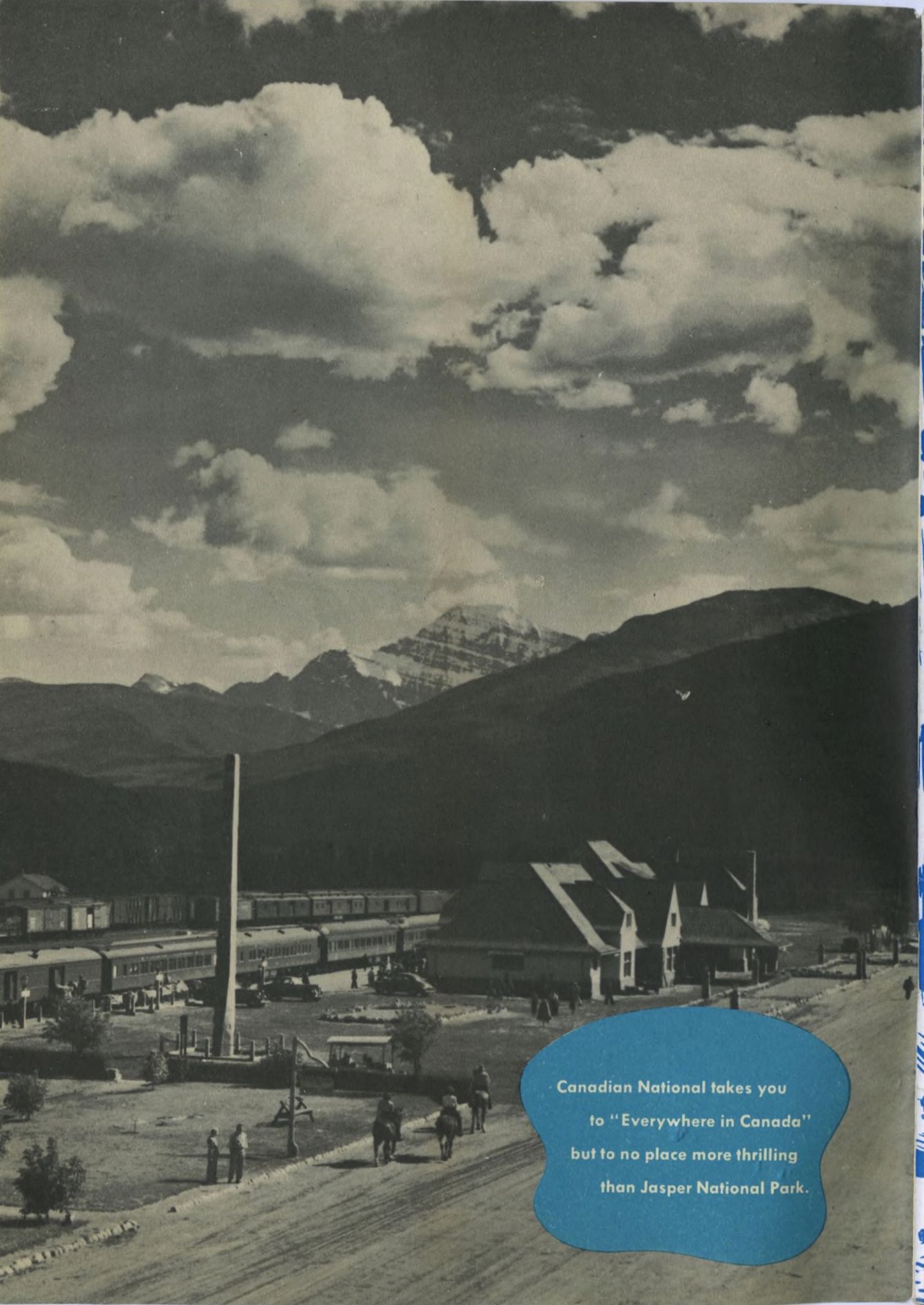
# Jasper

*National Park*

**CANADIAN ROCKIES**







Canadian National takes you  
to "Everywhere in Canada"  
but to no place more thrilling  
than Jasper National Park.



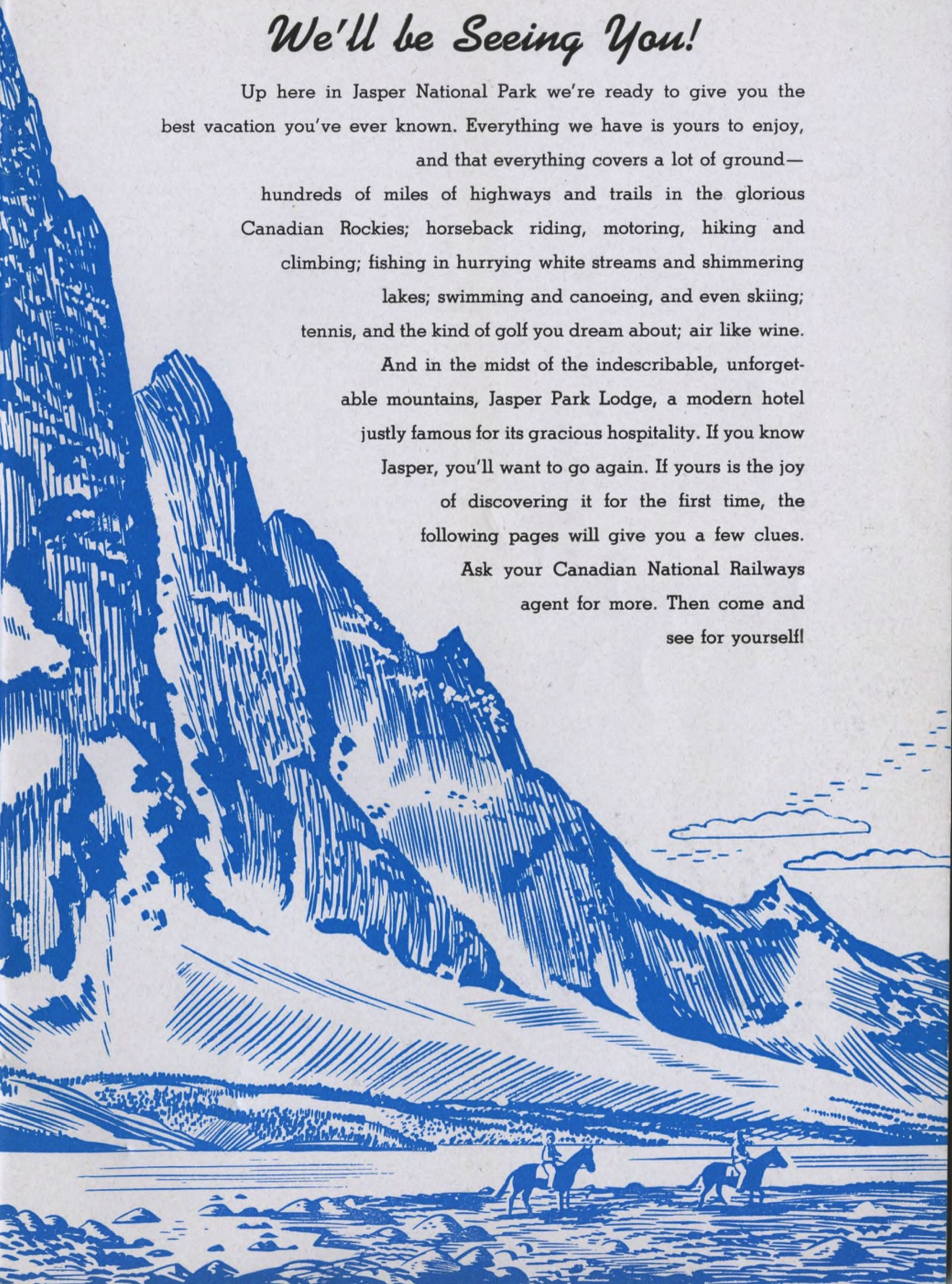
# *We'll be Seeing You!*

Up here in Jasper National Park we're ready to give you the best vacation you've ever known. Everything we have is yours to enjoy,

and that everything covers a lot of ground—  
hundreds of miles of highways and trails in the glorious Canadian Rockies; horseback riding, motoring, hiking and climbing; fishing in hurrying white streams and shimmering lakes; swimming and canoeing, and even skiing; tennis, and the kind of golf you dream about; air like wine.

And in the midst of the indescribable, unforgettable mountains, Jasper Park Lodge, a modern hotel justly famous for its gracious hospitality. If you know Jasper, you'll want to go again. If yours is the joy of discovering it for the first time, the following pages will give you a few clues.

Ask your Canadian National Railways agent for more. Then come and see for yourself!





## *The Man from Missouri*

When you visit a place like Jasper you don't go poking into history. What concerns you is not the past but the present; not antique buildings steeped in centuries of human miseries and splendors (and perhaps deficient in plumbing) but a modern hotel with hot water and good food, gracefully served; not archives and old bookshops, but a championship golf course; not narrow, cobbled streets, but wide motor highways and springy bridle trails; not picture galleries, but the real thing, the living panorama of mountains and valleys, rivers and lakes.

It might give spice to your enjoyment, however, to know that Jasper has its romantic yesterday as well as its thrilling today. If you don't count the Indians before the appearance of the White Man, its history began in the early days of the 19th Century, when David Thompson, the fur-trader and explorer, went over Athabaska Pass to the Pacific. His route became the main thoroughfare of the fur brigades through the Rockies, and he was followed by a long line of adventurers including Gabriel Franchère and other Astorians; the missionary, Father de Smet; David Douglas, the botanist, and the artist, Paul Kane. They have left nothing behind but their names, but these you will find all over the Park.

One of the names from the old days is Jasper itself. It has nothing to do with a certain variety of cryptocrystalline quartz. It has no reference to the jasper which is mentioned in the Bible as one of the foundations of the New Jerusalem. It simply commemorates a yellow-headed fur trader from Missouri named Jasper Hawes. No one knows much about him or why he should thus be made immortal, but the name stuck, and it's a lucky thing he was the kind of fellow who was not called "Mr. Hawes".



Resting mounts and enjoying the breeze.



# *It's All Yours!*

Statistics will interest you no more than history. But it may challenge your imagination to be told that Jasper is the largest national park in the world. Within its 4,200 square miles—an area greater than the State of Connecticut—that will give you an idea—are hundreds of miles of highways and trails.

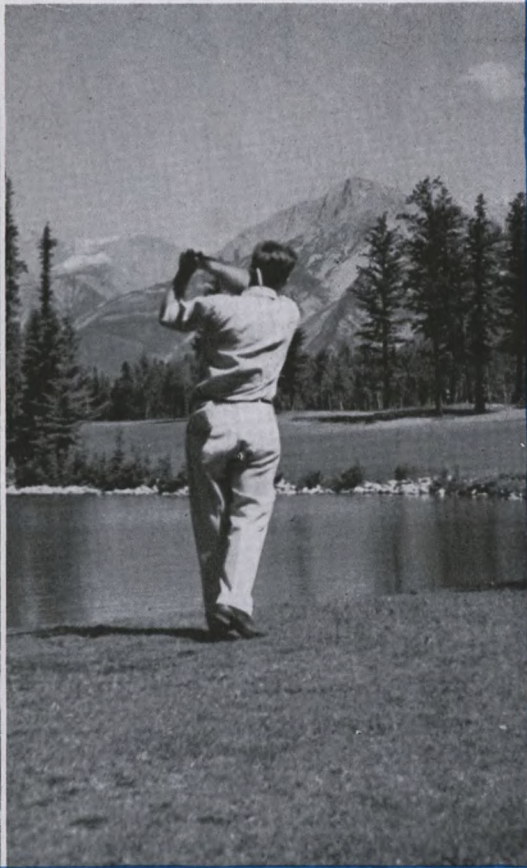
The beauty of it is that, with so much developed, much more is still uncharted. Jasper has a boundless future. But you will not exhaust today's Jasper, not in a week, not in a summer. There is always more to see, more to do. And the everlasting mountains, always the same, are always different. They are minted afresh every morning; they are new every hour.

Jasper is all yours, see it how you will. Ice-clad peaks, the wide panorama of valleys, swift rivers and tranquil lakes, flowery alpine meadows—they are all yours for the looking. There is no better way to see the mountains than from the back of a surefooted pony. Ride for an hour or two, or hit the trail for days, with a guide and a pack train, camping out at night under the stars. Or if riding isn't your dish, use your own legs—swing out with your rucksack on your shoulders, or take it in leisurely strolls. Climb, if you're an alpinist, or take Walt Whitman's advice—"loaf and invite your soul". See Jasper from the golf course, or from the soft cushions of an automobile.

However you take it, Jasper is yours and you will find it worth the taking.



The Columbia Icefield Drive.



Over the water—14th Tee.





Jasper Park Lodge, a jewel in its magnificent setting, stands on the shore of beautiful Lac Beauvert. Beyond is the Colin Range and Old Man Mountain.





The friendly atmosphere of Jasper Park Lodge is suggested by these views of the huge stone fireplace in the Main Lounge, the dining room and a bedroom.





## *Jasper Park Lodge*

The heart of this great national park is the town of Jasper, administration headquarters and railway centre, and—about three miles away—the Canadian National Railways famous summer hotel, Jasper Park Lodge. Both have the advantage of being situated in the widespreading Athabaska Valley: the mountains are all around but they never crowd so close as to give you that shut-in feeling.

The Lodge is a big hotel. It has accommodation for 650 guests. But it has no elevators. It doesn't need them, because it has no second storey. Indeed, the Lodge isn't a building at all—it is a village of bungalows.

Now here's a bright idea! The designers, instead of throwing themselves into conflict with the natural surroundings, decided that harmony was the thing. They built their hotel around the crescent of one of the bays of lovely Lac Beauvert, planting trees and gay flower gardens, spreading a green carpet of grass down to the water's edge, and they built it of peeled logs, taken from the mountains' own forests.

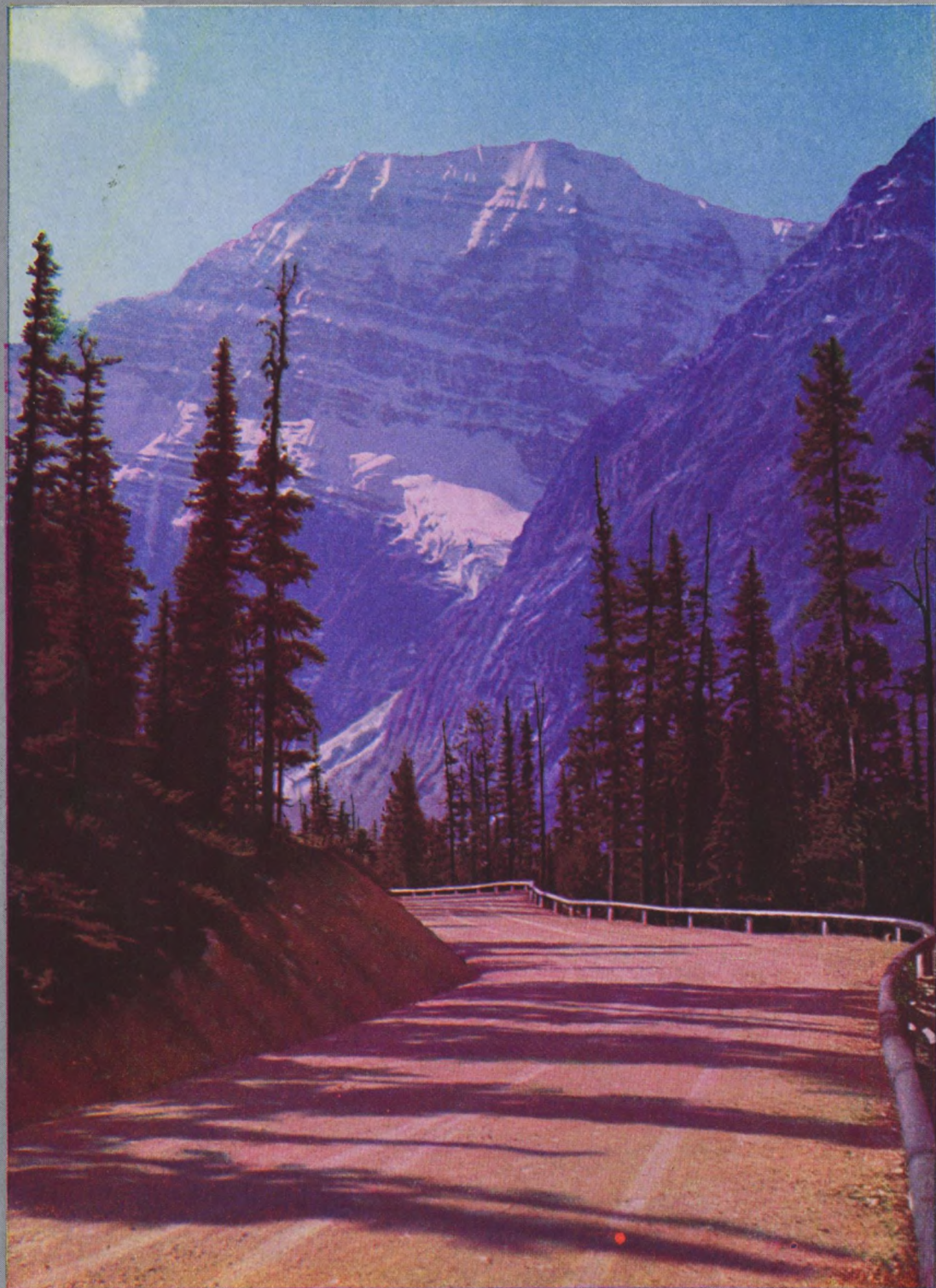
Yet everything you expect in a first class hotel is there. In from the trail, from the golf course or the tennis court, you may refresh yourself with a dip in the open-air swimming pool or you may soak the stiffness out of your muscles in a hot bath. After dinner—and the food is worthy of an epicure's palate—you may enjoy a concert, or a dance, or a motion picture show: play bridge, if you prefer, settle down with a book, or expand in conversation. All this if you can resist the outdoors, floating in a canoe on shimmering Beauvert; strolling around Lake Mildred; watching the changes in Pyramid Mountain, The Whistlers, or the eternally slumbering Good Old Man, as the evening shadows lengthen; reluctant to see the last of radiant Mount Edith Cavell.



Jasper Park Lodge has the appearance of a lovely alpine village—its rustic log cottages set amid brilliant flowers and velvet lawns.







*Natural Color Photograph.*

Mount Edith Cavell — in serene majesty — raises its snow-crowned peak into the azure blue



## *The Cavell Drive*

Towering 11,033 feet, Mount Edith Cavell reigns resplendent over the Athabaska Valley. You see its white contour the moment you step off the train at Jasper station: you have a magnificent view of it across the lake from the Lodge. To see it is to dream of visiting it. You need not dream long, because a motor highway takes you to the foot of its Angel Glacier.

In the twenty miles from the Lodge, the highway, crossing the Athabaska, the Miette and the Astoria Rivers, and Portal and Whistlers Creeks ascends several thousand feet and opens to your eyes enchanting glimpses of distant snow-crowned peaks and glittering glaciers.

When you reach the end of your drive you may have tea beside the glacier. If you feel ambitious, you can scramble over the ice or climb down to the shore of the vivid Lake of Forgiveness.

Perhaps you will make plans for an alpine expedition to the summit of the great mountain itself. But even if you are content to admire Mount Edith Cavell from below, you will agree that it is a worthy monument to the heroic British nurse who perished in the First World War.

Mount Roche Miette as viewed from  
the motor road to Punch Bowl Falls.







From Viewpoint, on the route to Mount Edith Cavell, is gained this panorama of the Astoria Valley and a tumbled mass of ice and peaks.



The Angel Glacier—  
Mount Edith Cavell.

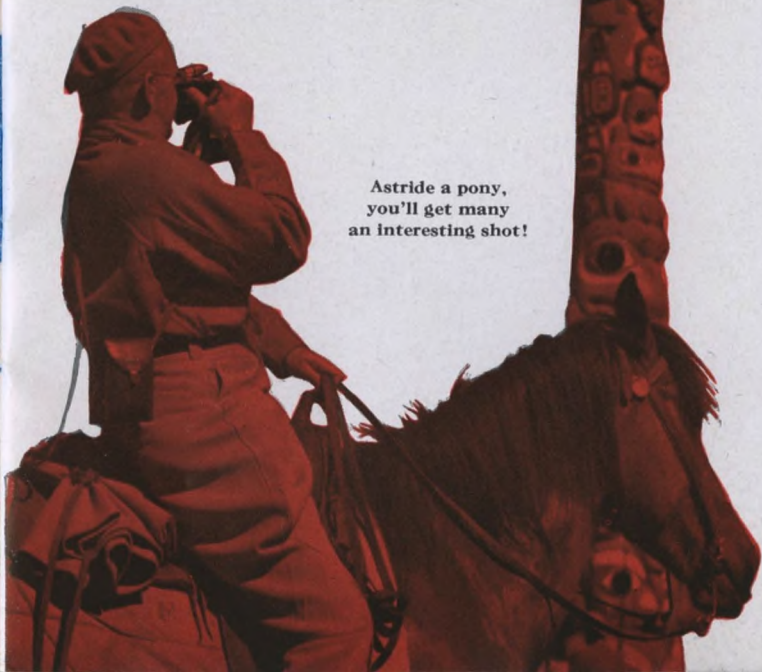




The heated outdoor pool is between the Main Lodge and beautiful Lac Beauvert.

## *Take it Away!*

Astride a pony,  
you'll get many  
an interesting shot!



How often, as the hours pass all too fleetly in Jasper National Park, will you wish you could hold them forever. You will carry away glowing memories. But you can do better than that. Don't forget your camera. Professionals—even Hollywood itself—find Jasper a happy hunting ground, and it is just as hospitable to the amateur.

The camera is the only "gun" allowed in this great wild life sanctuary and you will discover that you can have all the fun of the chase, stalking the bears, the deer, moose, elk, beaver, and even the shy mountain sheep and goat.

There is no end to your opportunities for good pictures, from mountains to marmots; from glaciers to golfers, and girls diving into the pool; from fly fisherman to flowers; from totem poles to trail riders.

You don't have to leave the Lodge grounds to get beauty and action for your camera. But when you go out on the trail or take a motor trip—to Edith Cavell, to Maligne Canyon and Maligne and Medicine Lakes, to the Columbia Icefield—you will be confronted by such an embarrassment of photographic riches that you will never feel you have enough film.





Serene and lovely Maligne, largest glacial lake in the Canadian Rockies, is rimmed by towering peaks.

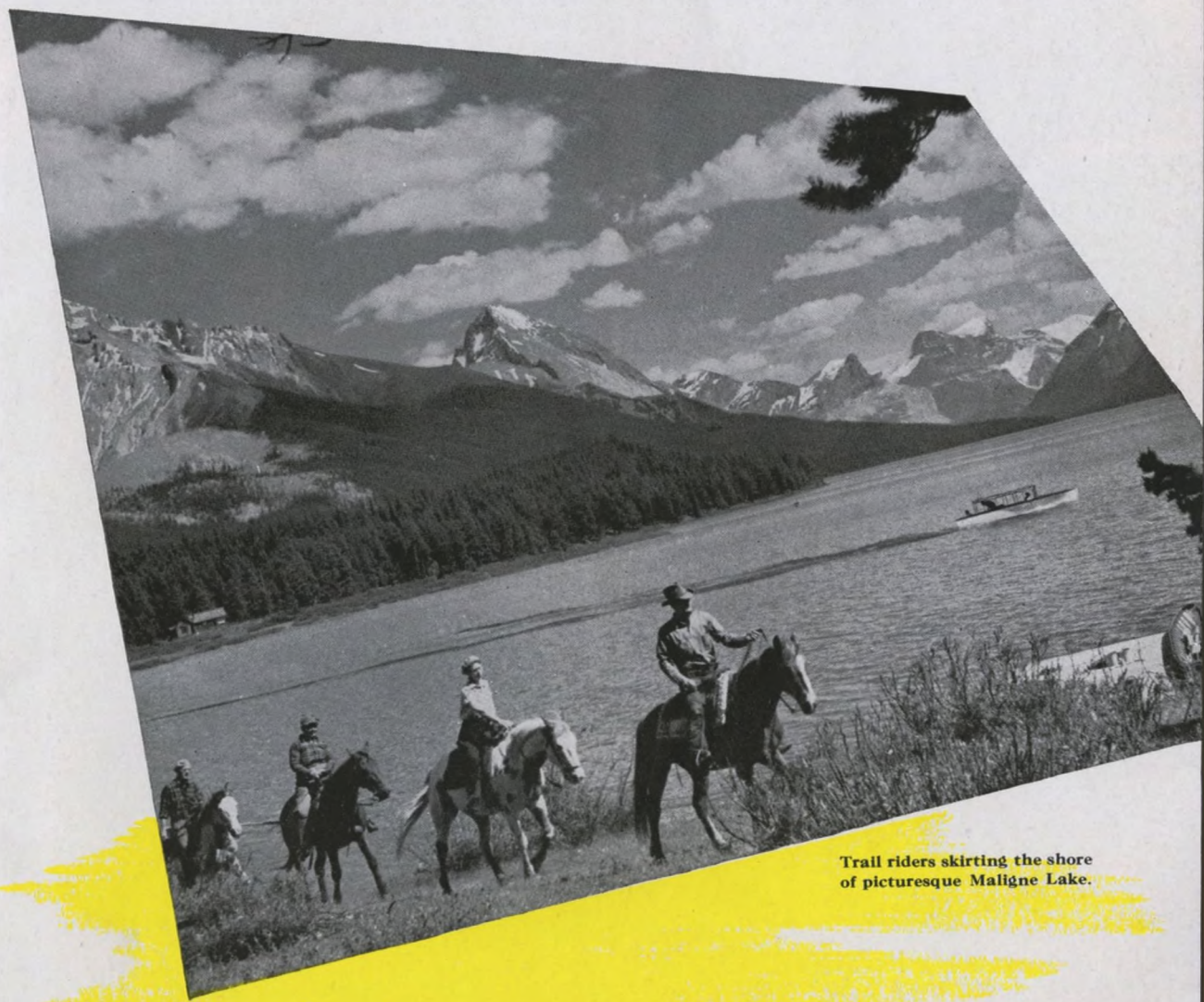


## Seeing is Believing

You couldn't be blamed if you refused to believe Maligne Lake. To say that it is the largest glacial lake in the Canadian Rockies is to state a fact; to say that it is the most beautiful is to utter an opinion. Neither comment can come near its wonder. No words can add to its dignity, no photograph give you more than a hint of its grandeur. You must see for yourself, and seeing is believing.

Motor from Jasper Park Lodge to Medicine Lake, cross Medicine in a launch, motor from there to Maligne; or go all the way on foot or horseback; make Maligne Lake chalet your headquarters and see for yourself. When you get there, fish for trout, hike, climb, ski—you can get glorious skiing in the middle of summer—or take a motor-boat trip the seventeen miles to the end of the lake.

Maligne Lake is walled in by a great crescent of colossal peaks, some of them rising precipitously from the water, and your eyes are dazzled by a score of glaciers. You will never forget the colour of the water. You will linger in dreams over the splendour and mystery of those massive, cloud-capped towers.



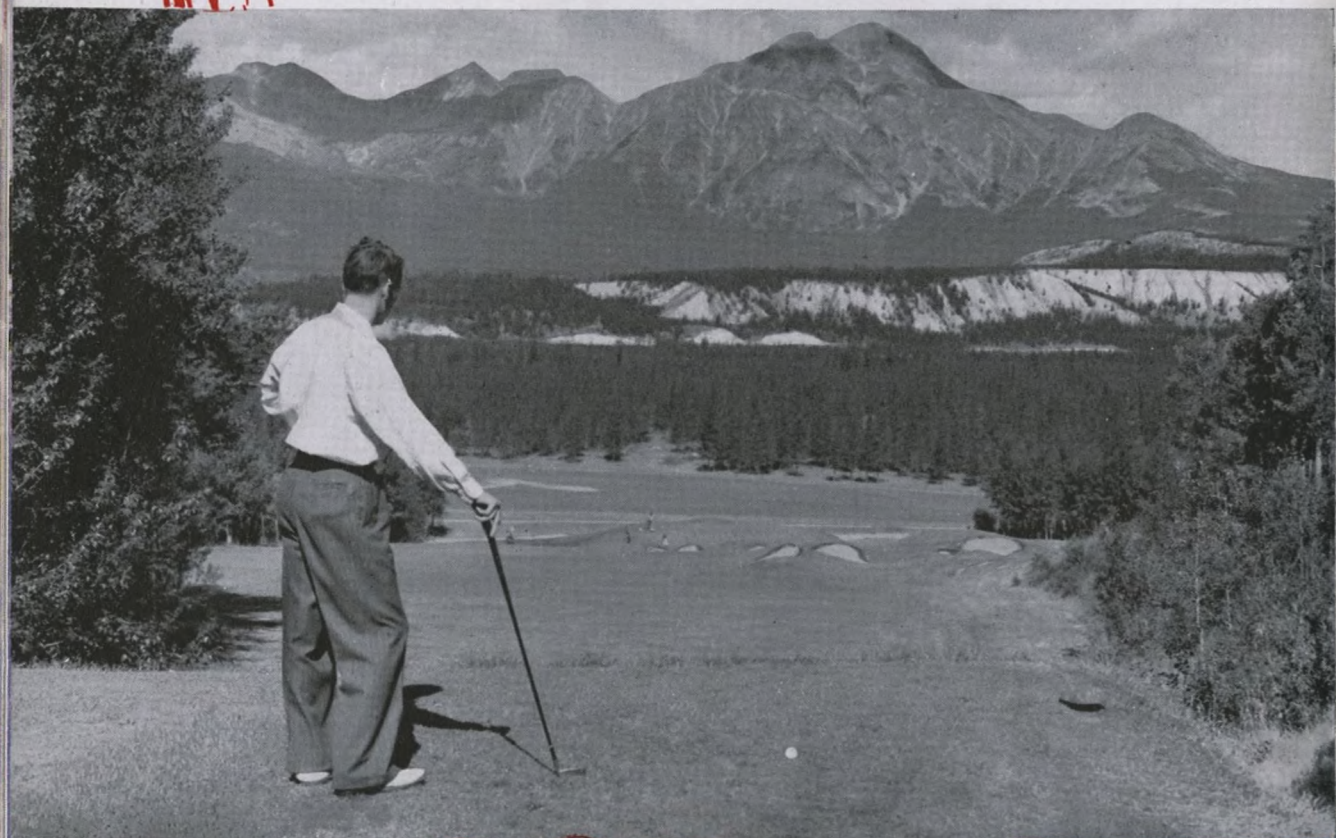
Trail riders skirting the shore of picturesque Maligne Lake.



## Eye on the Ball

It's not easy in Jasper, where you are surrounded by so many distractions, but if you're a keen golfer, the cloud shadows passing over the mountain ranges, the reflection of sky in clear waters, even the odd bear ambling over the fairway, won't put you off your game, for this is a championship course, one of the finest on the continent. The laziest duffer, not worrying about that par of 71, will enjoy it, too, for it has been so expertly designed that in all its length—6,700 yards—there are no breath-taking steps to climb, though it is a mountain golf course. In contours and distances, bunkers and water hazards it offers a challenging variety.

Its fairways and greens are perfect, its clubhouse—only a step from the Lodge—an invitation for relaxation at the game's end. Throughout the season, many events add stimulus to your play—as if any were needed!—and the climax is the Totem Pole Tournament which lasts for a week in September and draws players—and galleries—from all over Canada and the United States.



The Ninth, a stiff iron shot, faces Pyramid Mountain.



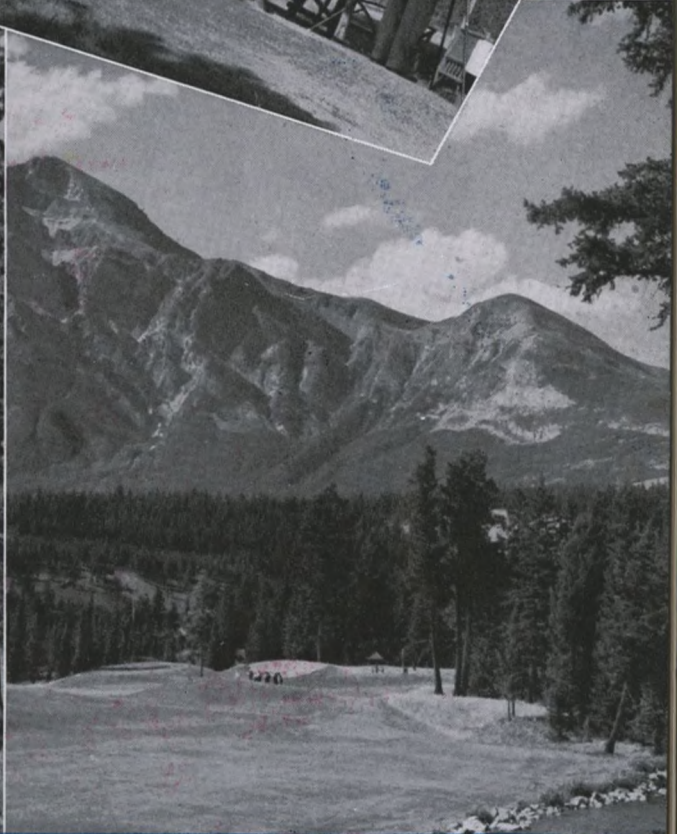
The Jasper Park Lodge Course, remodelled and improved to add zest to your game is now, more than ever, a championship course.



The practice fairway.



The eighth tee and fairway.



The eleventh fairway.





Mount Athabaska and the Athabaska Glacier, climax of the Columbia Icefield Drive from Jasper Park Lodge.





## Roof of the Rockies

The Seven Wonders of the World are out of date. The Sphinx still gazes across the immemorial sands, but where is the Colossus of Rhodes, and who has seen the Hanging Gardens of Babylon?

It's high time we made a new list and if we did, the Columbia Icefield would surely have a place in it. Covering an area of more than 110 square miles, it is the largest and most impressive body of ice outside the Arctic Circle. Its average elevation is between 9,000 and 10,000 feet, its loftiest peaks towering to 11,000 and 12,000. The Columbia Icefield is the roof of the Canadian Rockies, the geographical centre of the water system of a quarter of North America. Not without reason has it been named "Mother of Rivers", for out of

← The Columbia Icefield Chalet nestles in the shadow of Mount Athabaska.

For skiers who cannot wait for winter, Mount Athabaska offers plenty of summer thrills.





its massive glaciers spring streams that swell into mighty rivers carrying fertility to a vast terrain and pouring into three oceans. Mile-wide Saskatchewan Glacier, reaching six and a half miles down into the valley, sends waters to Hudson Bay and the Atlantic. Out of Athabaska Glacier go streams that travel 2,000 miles to the Arctic, by way of the Athabaska, the Peace and the Mackenzie. Still other waters from the Icefield find their way to the Columbia and the Pacific.

Not so long ago, the only way to reach this magnificent world of glittering mountains was to thread your way strenuously through the wilderness by pack train. Today you may go in comfort by automobile. The 75 miles along the Jasper-Banff Highway from Jasper Park Lodge are crowded with thrilling scenery, and the Icefield is the climax. If you cannot tear yourself away, you will find a pleasant chalet at the foot of Athabaska Glacier, your headquarters for hikes and rides and spectacular summer skiing.

The spectacular Stutfield Glacier, one of the many breath-taking views which unfold along the highway from Jasper Park Lodge to the Columbia Icefield.





# On Two Feet....

If you are one of those adventurous souls who cannot be content with being at the bottom of a mountain looking up, who feels the urge to be on the top looking down, who likes to come to grips with the mighty peaks, struggling for conquest with fingers and toes and ice-axe, Jasper offers every challenge the most expert alpinist can ask. Seventy per cent of the highest summits lie within the Park or may be reached with Jasper for a base. Alpine club camps are held frequently in Jasper and independent climbers turn up every year. Many of the peaks have been scaled, but they are always worth doing again, and if it's first ascents you seek, you'll find plenty of virgin territory here.

For those of you who are not ambitious to climb but who like hiking, Jasper has everything—hundreds of miles of trails, short trips and long ones; chalets along the way; glorious aspects of mountain, valley and meadow; swift, cold streams and tranquil lakes.



Well-kept paths appeal to the hiker and the casual stroller.

And many unscaled peaks challenge the stamina and skill of climbers.







The Ramparts of the Tonquin Valley form the massive backdrop for this trail party.



A before-breakfast ride along the Sawdust Trail. Beyond is Pyramid Mountain.



Trail party approaching Mount Athabaska.



## *... And on Four*

Go on rubber-tired wheels, go on your own two feet, but, unless you're allergic to saddles, the best way to see the mountains is from the back of a pony. You can cover more ground more easily that way than in a hike, you can go places where a car will never take you and come to really intimate terms with the slopes and the meadows and the passes high above the treetops.

Hit the Sawdust Trail, through evergreen forests, along lake shore and river bank, up to the bench below Signal Mountain . . . ride along Maligne Canyon . . . head for the view from Old Fort Point . . . visit Caledonia Lake, Pyramid Lake or Wabasso . . . these are all short rides, from two to five hours. Enough to loosen you up for a four-day trip to Maligne Lake, by way of Medicine, and back over Shovel Pass and along the Skyline Trail. Or make your pace for the Tonquin Valley and the rugged Ramparts.

If you want more, you may arrange for trail trips of a week or longer, taking you into the farthest reaches of the Park. The chalets and campsites are strategically placed for rest and outlook. The ponies are dependable, the guides know what it's all about.

Sure-footed mountain ponies are just as much at home above timberline as they are on well-worn trails.





## Attention, Mr. Walton

Izaak Walton never knew better fishing than the fishing in Jasper National Park. If his kindly shade could hear about it, he'd be out of heaven in a jiffy and trying his hand with one of those—to him—new-fangled fly rods.

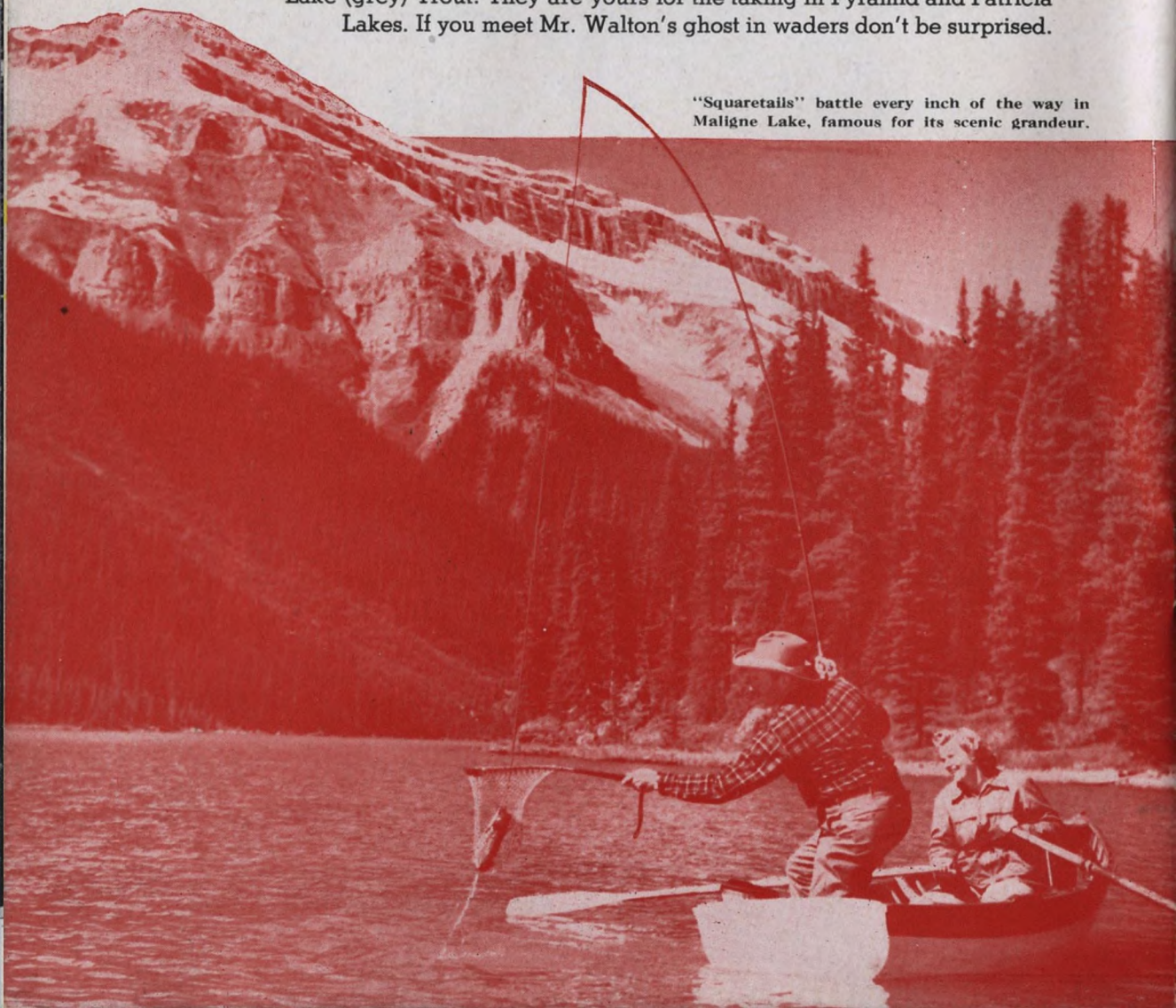
You can have the fun he's missing . . . white water, still lakes, the best of sport in the midst of green forests and shining mountains.

There are two kinds of fish native to Jasper. The Rainbow Trout and the Dolly Varden. You don't have to go far from The Lodge for the Rainbow but it is biggest and most plentiful in Amethyst Lakes in the Tonquin Valley and in the Astoria River which runs out of it, a short day's trail ride from the hotel. The best Dolly Varden fishing is in Jacques Lake.

A non-native, but plentiful and sporty, is the Eastern Brook (Speckled) Trout which has given the waters of the Maligne River and Maligne Lake a world-wide angling reputation.

On the Maligne River, a quarter of a mile from its junction with the Athabaska, is the Jasper Fish Hatchery, which has 25 troughs with a capacity of 750,000 eggs. This is a great attraction to tourists, but to fishermen it is treasure trove. For out of these troughs and the rearing ponds the fingerlings go to swell the fishy population of more than a score of lakes and streams. In addition to the species mentioned Jasper also boasts of Lake (grey) Trout. They are yours for the taking in Pyramid and Patricia Lakes. If you meet Mr. Walton's ghost in waders don't be surprised.

"Squaretails" battle every inch of the way in Maligne Lake, famous for its scenic grandeur.







A fisherman creels a scrappy Rainbow trout taken from the Astoria River in the Tonquin Valley.



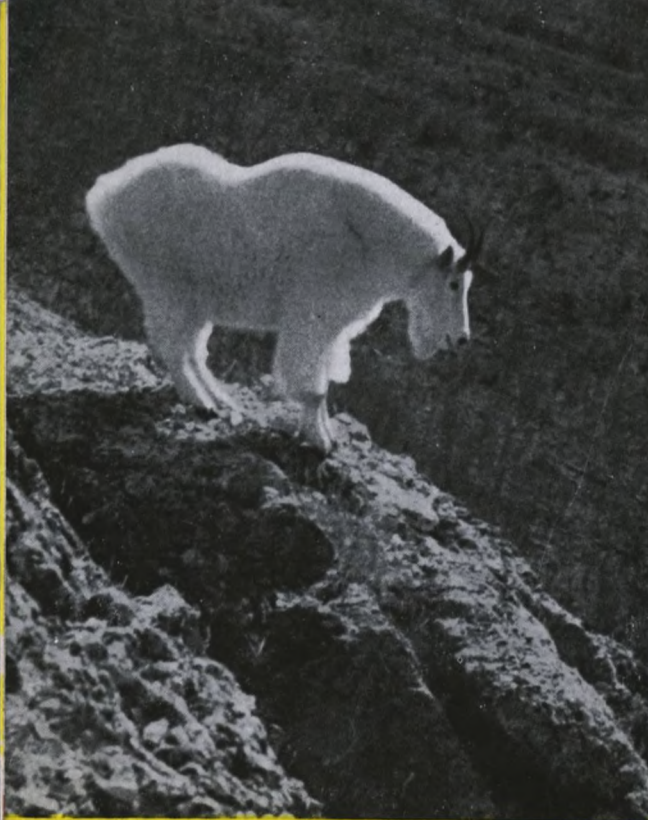
The Maligne River, pouring out of the Lake, has stretches of "white water" that fly-fishermen dream about.



Another fighting Rainbow brought to net from the ice-cold waters of Amethyst Lake, Tonquin Valley.





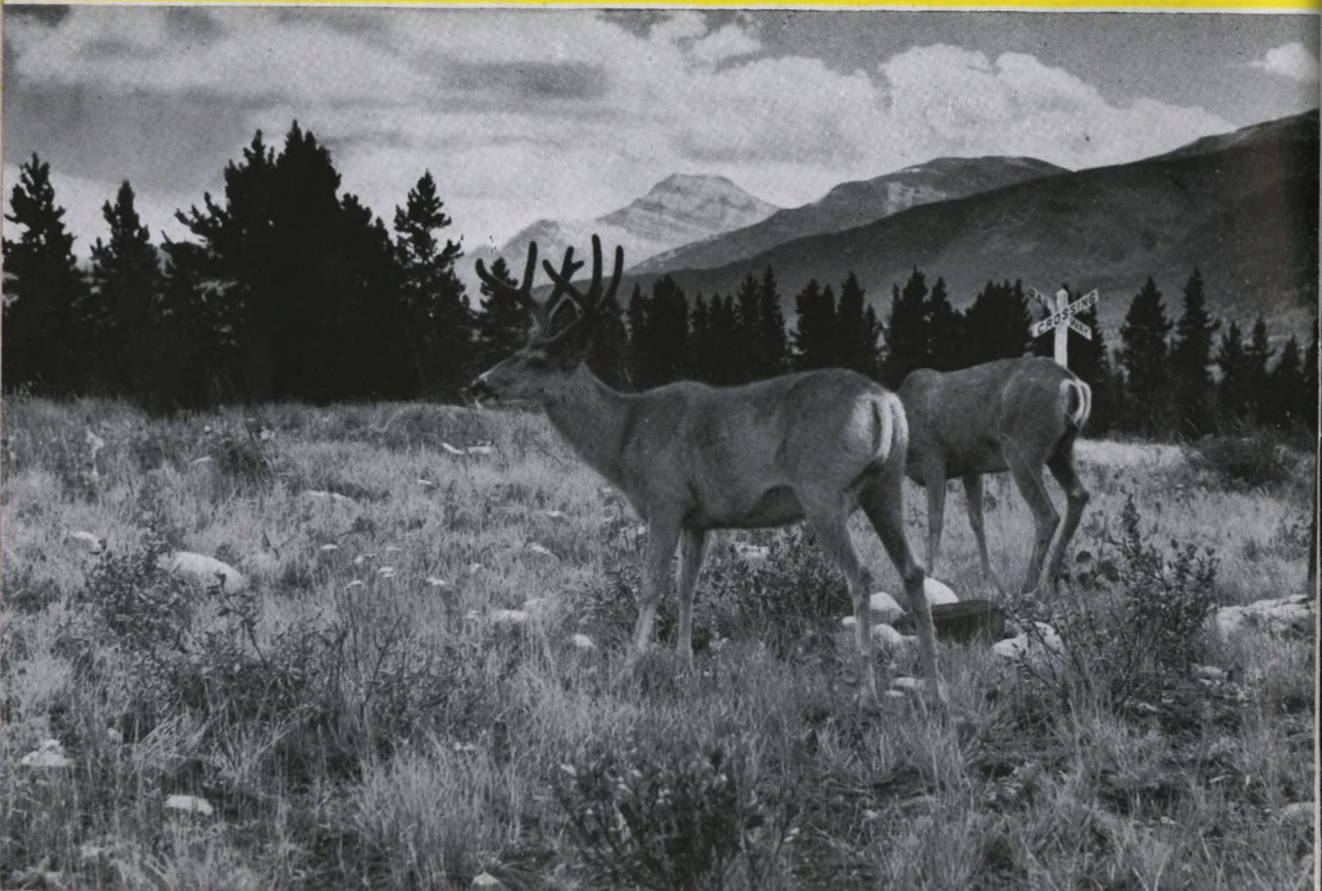


From his rocky crag a mountain goat inspects a car on the highway far below.

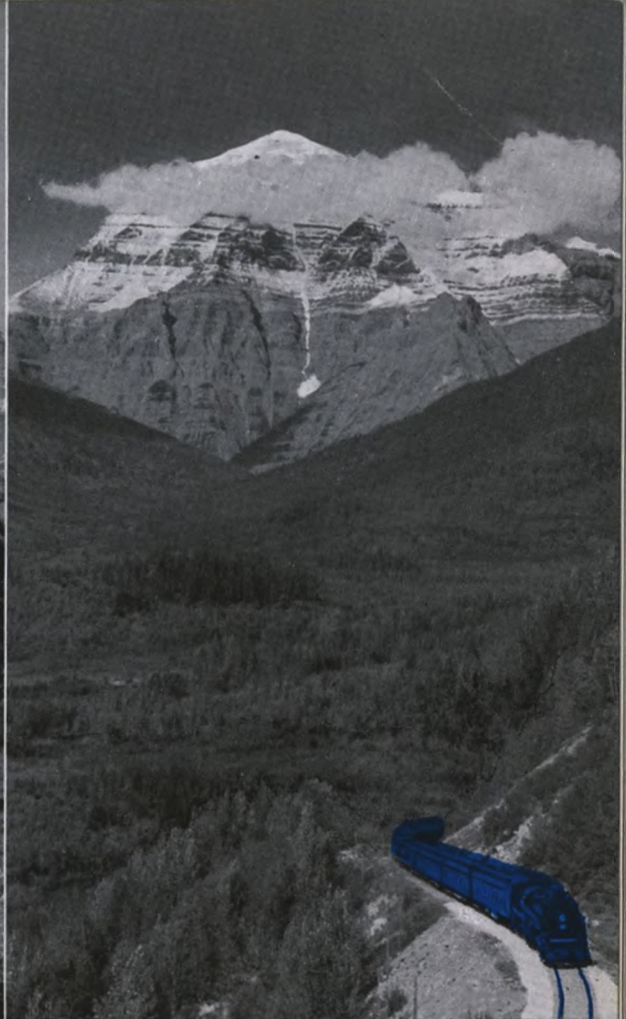
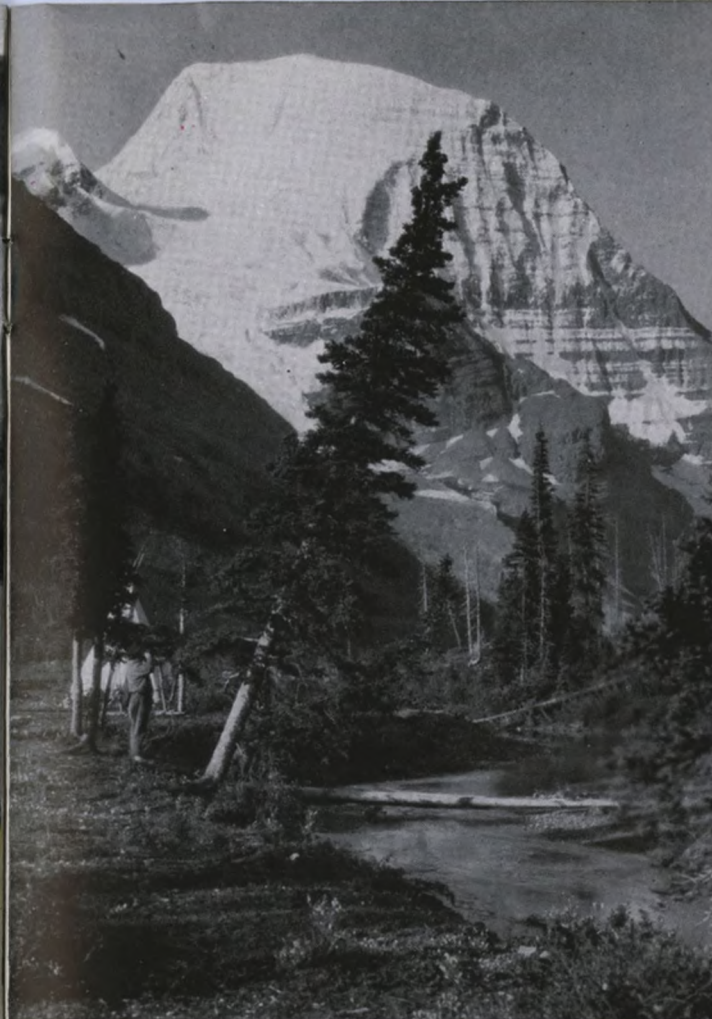


Playful bears roll and tumble on the velvet lawns and offer interesting camera shots.

Stop-Look-Listen. Their caution at the railway tracks gives the camera fan his opportunity.







Mighty Mount Robson — the north face . . . . .

and as viewed from "The Continental Limited."

## Mount Robson

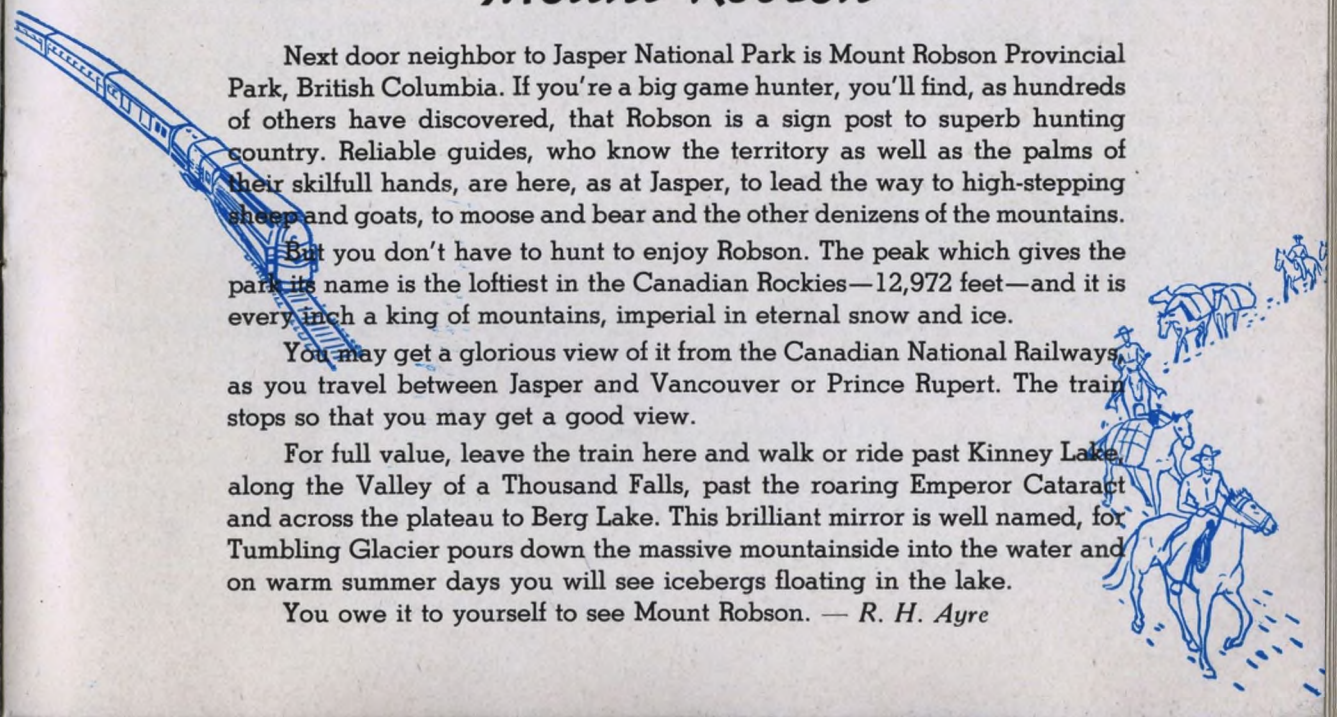
Next door neighbor to Jasper National Park is Mount Robson Provincial Park, British Columbia. If you're a big game hunter, you'll find, as hundreds of others have discovered, that Robson is a sign post to superb hunting country. Reliable guides, who know the territory as well as the palms of their skilfull hands, are here, as at Jasper, to lead the way to high-stepping sheep and goats, to moose and bear and the other denizens of the mountains.

But you don't have to hunt to enjoy Robson. The peak which gives the park its name is the loftiest in the Canadian Rockies—12,972 feet—and it is every inch a king of mountains, imperial in eternal snow and ice.

You may get a glorious view of it from the Canadian National Railways as you travel between Jasper and Vancouver or Prince Rupert. The train stops so that you may get a good view.

For full value, leave the train here and walk or ride past Kinney Lake, along the Valley of a Thousand Falls, past the roaring Emperor Cataract and across the plateau to Berg Lake. This brilliant mirror is well named, for Tumbling Glacier pours down the massive mountainside into the water and on warm summer days you will see icebergs floating in the lake.

You owe it to yourself to see Mount Robson. — R. H. Ayre









## SIGHTSEEING MOTOR DRIVES

*NOTE:—Starting point of all sightseeing motor drives—Main Entrance, Jasper Park Lodge.*

*The Station Agent at Jasper will make arrangements for railway patrons, who are not guests of the Lodge, to be taken from the station, in Jasper Park Lodge motor equipment on any of the scheduled drives, Nos. 1 to 6, inclusive. Regular rates will apply.*

**Departure hours and schedules for these drives have been carefully planned to permit visitors to view without haste the scenic wonders of the Park.**

*Government Tax, where assessable, is not included in the fares given below.*

**No. 1: General Drive—Twenty-eight miles return. Motors leave the Lodge at 10:00 a.m. and 2:30 p.m. Time, approximately 2½ hours. Cost per person, \$3.00.** This drive embraces a wide variety of valley, lake, canyon, and mountain scenery. The route, after following the Athabaska River, skirts Lakes Annette and Edith before gradually ascending the roadway to Maligne Canyon. From this vantage point the tourist stands in awe before the snow-capped grandeur of lordly mountains and the mighty sweep of the Athabaska Valley, which loses itself in endless vistas of Alpine beauty. Maligne Canyon, a tremendous gorge descending to a depth of 188 feet, and remarkable for its potholes, is a never-ending source of wonder and amazement. On the return journey the tourist again meets the Athabaska River and crosses it to join the Main Highway to Jasper, where he gets a glimpse of "the Raven", one of the largest totem-poles in existence. Continuing along to the foot of Pyramid Mountain and passing en route Lakes Patricia and Pyramid, the drive again runs through Jasper before terminating at the Lodge.

**No. 2: Glacier of the Angel (Mount Edith Cavell)—Forty miles return. Motors leave the Lodge at 9:30 a.m., and 2:30 p.m. Time, approximately 3 hours. Cost per person, \$4.00—**Offering excellent motoring, this drive by a course of wide-sweeping switchbacks reaches an altitude of nearly 2,000 feet above the floor of the valley and gives the tourist an ever-changing series of strikingly beautiful panoramas. The highway, terminating at the foot of the famous glacier, affords an excellent view of this vast field of living ice. Light lunches and refreshments can be obtained at the Tea Room near the foot of the Glacier.

**No. 3: Miette Hot Springs and Fiddle River Canyon—Eighty miles return. Motors leave the Lodge at 9:00 a.m. Time, approximately 4 hours. Cost per person, \$6.00.** The route, after skirting the shore of Lake Mildred, follows the Athabaska River, which it crosses to join the Inter-Provincial Highway, whence it extends for miles down the Athabaska Valley to Jasper Lake and beyond to Punch Bowl Falls. A short stop is made to view this unique waterfall, and then the trip continues along the rim of the Fiddle River Canyon for another eleven miles before finally reaching the famous Miette Hot Springs. At this point, hot sulphur spring water, varying in temperature from 79 to 128 degrees F., comes boiling out of the mountain side. Motors will remain long enough to permit bathing in the pool.

The Miette Hot Springs consist of three main springs, which issue from the rocks along the banks of Sulphur Creek. The springs, non-volcanic in nature, owe their heat to chemical action, caused by surface water coming in contact with certain minerals in the limestone rock

formation. The combined flow of the three springs reaches a total of approximately 170,000 gallons every 24 hours.

*The Swimming Pool and the Steam Baths at Miette Hot Springs are operated by the National Parks Department. The rates are:*

Swimming Pool—When bathing suit and towel are supplied by the Department: adults, 35c; children, 25c. When bathing suit and towel are supplied by bather: adults, 25c; children, 15c. Steam and Plunge Baths—50c. per person.

**No. 4: Columbia Icefield (Jasper-Banff Highway)—One hundred and fifty miles return. Motors leave the Lodge at 9:00 a.m. Time, approximately 7 hours. Cost per person, \$10.00. Minimum, 5 persons.** The drive follows the route of the Mount Edith Cavell Drive to a point beyond the crossing of the Astoria River, whence it continues along the valley of the Athabaska. From here the route penetrates through the very heart of the Canadian Rockies to the largest and most impressive icefield outside the Arctic Circle. With an estimated area of 110 square miles, the average elevation of this amazing icefield is between 9,000 and 10,000 feet, which, because the waters of its melting glaciers travel thousands of miles to three oceans, the Atlantic, the Pacific, and the Arctic, has been beautifully named "Mother of Rivers". Unquestionably, this is America's Greatest Scenic Drive.

**No. 5: Maligne Canyon—Twelve miles return. Motors leave the Lodge at 10:00 a.m. and 2:30 p.m. Time, approximately 1½ hours. Cost per person, \$2.00—**This canyon, into which the Maligne River plunges through a gorge 188 feet deep, ranks among the most extraordinary in the Canadian Rockies. The route lies over a gradually ascending roadway from which the tourist obtains magnificent views of lordly mountains and charming vistas of the Athabaska Valley. The new fish hatchery on the lower Maligne River beyond Lake Edith is also of interest.

**No. 6: Punch Bowl Falls—"A Twilight Drive"—Sixty miles return. Motors leave the Lodge at 7:00 p.m. Time, approximately 3 hours. Cost per person, \$3.50—**The route, after skirting the shore of Lake Mildred, follows the Athabaska River, which it crosses to join the Inter-Provincial Highway, whence it extends for miles down the Athabaska Valley to Jasper Lake, and beyond to Punch Bowl Falls and Valley. Affording a very wide variety of mountain scenery, this trip is highly recommended as an evening drive, for after sunset, animal life frequents the numerous lakes and streams in this region, and it is usually possible to see sheep, goats, deer, bears, moose, etc. from the motor-car. Return to the Lodge in ample time for dancing, bridge, etc.

## SPECIAL MOTOR SERVICES

**Medicine Lake—Beaver Lake—Lower Maligne River.** Provided arrangements are made at the Motor Transportation Desk before 9:00 p.m. the evening prior to departure, anglers who wish to fish these waters can leave Jasper Park Lodge at 9:30 a.m. and leave Medicine Lake on return at 7:00 p.m. For this service a charge of \$5.00 per person, minimum two persons, will

be made. Should a party make the trip at any time other than the foregoing, an extra charge of \$5.00 for one person, and \$2.50 each for two or more persons, will be made. **If boats, guides, fishing tackle, etc. are required, notice must be given at the Trail Riders' Desk before 9:00 p.m. the evening prior to departure.**



**Picnic Parties**—By arrangement, special buses, when available, will be operated to picnic sites. Cost per person, \$1.00 for the round trip; minimum charge, \$10.00 per round trip.

By arrangement, touring cars, if available, can also be engaged for this service at special rates.

**Trips to Jasper**—In addition to the scheduled bus trips to Jasper, cars, when available, can also be obtained at the following rates:

One-way—one to three persons, \$2.00; each additional person 50c.

Round-trip—one to three persons, \$3.00; each additional person \$1.00.

Time, including shopping, not to exceed one hour for the round trip; extra waiting time will be charged for at the rate of \$3.00 per hour.

**A Shopping Bus** to Jasper and return operates daily (except Sunday) at 10:30 a.m. and 4.00 p.m. Cost, 50c. per person return.

For motor coach service over the Columbia Icefield Highway between Jasper and Lake Louise, Banff, Calgary, etc., see page 38.

## SADDLE TRIPS—TRAIL TRIPS—GUIDE SERVICE

*Official Outfitters—Fred Brewster's Rocky Mountain Camps Limited*

In advertising the following services the Canadian National Railways act only in the capacity of Agents; therefore, while highly recommending the Outfitters to guests, it does not assume any legal responsibility whatsoever relative to the services provided.

Arrangements can be made at the Trail Riders' Desk in the Main Building for all scheduled and special short saddle trips, and for guide service.

The horses, equipped with Mexican stock-saddle or English riding-saddle, are locally bred and of good type.

Every effort commensurate with trail conditions will be made to maintain scheduled times of departure and arrival.

It is very important that visitors who intend to hike or ride the trails bring with them suitable clothing, including riding or hiking boots, woollen stockings or socks, woollen jacket or sweater, heavy breeches, flannel or mackinaw shirt, slicker, gloves, and suitable hat or cap.

No responsibility will be assumed for the loss on the trail of valuables or personal equipment.

### SADDLE TRIPS

*NOTE: Slickers are not provided by the Outfitter.*

**Saddle Trip No. 1: Jasper Park Lodge Sawdust Trail**—Graded to a breadth averaging from ten to fifteen feet and sufficiently wide for a party of three to ride abreast, this new bridle path, rendered dustless by a generous application of soft sawdust, forms a vast circuit, with the Lodge itself as a centre. The trail leads through pine and fir forests, by lake shore and river bank, skirts the golf-course, and ascends to the bench below Signal Mountain offering from its different vantage points ever-changing vistas of the charming Athabaska Valley. Unquestionably, this is the most beautiful and scenic twelve-mile horseback ride on the Continent. Riding time, 3 hours.

**Saddle Trip No. 2: Maligne Canyon**—The route is over the back trails away from the motor roads and follows the Athabaska Trail, traversing the entire length of Maligne Canyon. A beautiful, easy ride of 12 miles return. Riding time, 3 hours.

**Saddle Trip No. 3: Golf Course and Old Fort Point (Hudson's Bay Table Top)**—The route skirts the greater part of the golf course, proceeds up the Buffalo Prairie Trail to the top of the ridge and out on

**Theatre Bus** to Jasper every evening, except Sunday. Cost, 50c. per person return.

**TAXI SERVICE**—Taxi Service within the Lodge area, e.g. to the Golf Course, to the Pony Barns, to see the bears, or to and from the cabins: 25c. per person, minimum 50c. for the trip.

During inclement weather, free motor transportation is provided between the cabins and the Main Building.

Free motor transportation is provided every Sunday morning for guests who wish to attend Church Service. Buses leave the Main Entrance at 7:45, 9:45 and 10:45 a.m.

**Motor-car Services** are available at all times between 6:00 a.m. and 12:00 midnight, at the regular tariff rates. After midnight, a charge of \$2.00 will be made for each car movement within the Lodge area; outside the Lodge area, special rates will apply for any car movement between 12:00 midnight and 6:00 a.m.

### GUIDE SERVICE

The management recommends that no mountain, saddle, or hiking trip be made without the services of a guide; parties who make trips without one do so at their own risk. The cost of a mounted guide is \$4.00 per half day, and \$7.00 per day. One guide is required for a party numbering up to five persons; an extra one, for more than five persons. Guide charges are pro rata according to the number in the party.

The guides are fully qualified, widely experienced, and thoroughly dependable.

### RATES FOR SADDLE HORSES

*Note: For a horse or a guide, one day consists of not more than nine (9) hours and not more than twenty (20) miles.*

Horses equipped with either Mexican stock-saddle or English riding-saddle: \$3.00 per half day, and \$5.00 per day. Mountain trips, \$7.00 per day. Special rate of \$24.50 per week for reserved horses.

to Old Fort Point. This trip affords a splendid view of the Athabaska Valley, the Lodge, Mt. Edith Cavell, and the mountains on both sides of the upper river. Distance, seven miles return. Riding time, 2 hours.

**Saddle Trip No. 4: Caledonia Lake**—Fourteen miles return. A small lake lying west of Jasper on a rocky bench above the Miette River, Caledonia Lake is reached by passing through Jasper and following the Miette road to Cabin Creek Bridge. Here the trail branches off and follows the left bank of Cavin Creek. Riding time, 4½ hours.

**Saddle Trip No. 5: Pyramid Lake**—Sixteen miles return. This trail leads the rider through Jasper, ascends the hill to the north, crosses Cottonwood Creek Valley, and then passes along the ridge above Pyramid Lake. Riding time, 5 hours.

**Saddle Trip No. 6: Buffalo Prairie-Wabasso Lake.** Twenty miles return. An interesting trail winding through beautiful scenery. Excellent fishing in the lake waters. Riding time, 5 hours.



**Saddle Trip No. 7: Maligne Lake and Sky Line Trail Trip**—For those who enjoy riding at a high altitude, the return trip from Maligne Lake over the Sky Line Trail offers a new and exhilarating experience. *If snow conditions permit, this trip will be operated between July 10th and August 31st.*

First day—leaves Jasper Park Lodge at 9:30 a.m., motor to Medicine Lake, take motor-boat across the lake and proceed by motorcar to Maligne Lake, arriving at 1:00 p.m.

Second day—rest at Maligne Lake Chalet and take scenic motor-boat trip to the upper end of Maligne Lake (34 miles return).

Third day—leave Maligne Lake Chalet at 9:00 a.m. with guide and saddle-horse, cross Maligne River via the saddle-horse bridge, follow the Shovel Pass Trail over the Northeast shoulder of Bald Mountain to the Evelyn Creek ford, and proceed up the long, easy slope to the summit of Little Shovel Pass at timber line. From the summit of Little Shovel Pass the rider gets a splendid view of the four miles of alpland, to be traversed before making the last climb to the summit of Big Shovel Pass (8,000 ft.). On the banks of a small mountain stream between the passes a stop is made for lunch. An easy descent across the shale slopes brings the rider to the overnight camp at Shovel Pass,—a distance of 14 miles.

Fourth day—the route leads upward from Big Shovel Pass to the skyline of the Maligne Range and for more than two miles maintains an altitude of eight thousand feet. The high altitude and peculiar location of the trail offer the rider in clear weather a magnificent view of the mountains in all directions. This is, beyond doubt, the most comprehensive panorama obtainable from a saddle. From the skyline a short, rapid descent is made to the basin at the rear of Tekarra Peak. After a short stop here for lunch, the rider continues around the east and north base to the top of Signal Mountain, which overlooks Jasper Park Lodge and the Athabaska Valley. The descent from Signal Mountain to the Lodge is made over the regular Signal Mountain trail,—a distance of 17 miles.

This is a four-day trip. Cost, including boat trip on Maligne Lake and Canvas House accommodation at Maligne Lake Chalet, \$71.50 per person; for cabin accommodation, \$79.50.

This trip can be made in three days by taking the scenic boat trip on Maligne Lake on the evening of the first day; cost \$33.50 per person; for cabin accommodation, \$41.50.

*In addition to the seven rides described above, there are numerous other interesting rides. Full information can be obtained at the Trail Riders' Desk in the Main Building. For maps, suggestions, and full information, write to "Fred Brewster's Rocky Mountain Camps Limited, Jasper, Alberta".*

## BREWSTER'S BLACK CAT RANCH

*Open July 1st to August 31st*

On the Eastern boundary of the Park, this ranch is thirty-five miles by rail from Jasper, and six miles from Brule Station, on the main line of the Canadian National Railways. Excellent riding trails, comfortable modern accommodation. Of peeled-log construction, the main building comprises a living room, dining-room, and kitchen. Sleeping accommodation is provided in two-room cabins, each room being furnished with two single beds and a private bath, and in a six-room bunk house with detached bathroom. Rates \$12.00 a day, \$70.00 a week, per person, including food, lodging, and saddle-horse, as well as transportation from and to Brule Station. Telephone connection with Canadian National Telegraphs at Brule. Management, Fred and Jack Brewster, P.O. Address: Jasper National Park, Alberta.

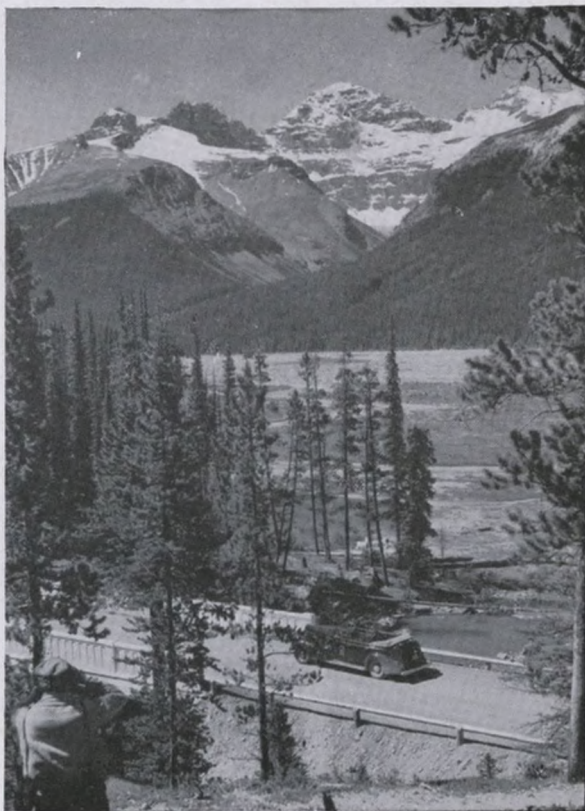
## THE MALIGNE DISTRICT

The Maligne district is one of the most interesting in the Park, not only on account of its remarkable canyon as referred to on Page 27, but because of its two beautiful lakes—Medicine and Maligne. The drive to the latter, with boat trip to the head of the lake, provides unforgettable glimpses of the beauty and grandeur of a great mountain world.

Medicine Lake, about 15 miles distant from Jasper Park Lodge and reached by automobile, is five miles long and a little over half a mile wide. At the upper end of the lake is Medicine Lake Chalet. Leaving Medicine Lake the road follows the Maligne River, now a tumultuous greenish-white stream of considerable size. Almost ten miles south one catches the first exciting glimpse of the shining tops of the snow peaks surrounding Maligne Lake. On the latter, near the outlet to the river, stands Maligne Lake Chalet. Before the Chalet and extending in a south-easterly direction for seventeen miles, with a breadth varying from two hundred yards to two miles and a shore line of some fifty miles, lies Maligne Lake, the largest glacial-fed body of water in the Canadian Rockies.

The vista from the lower end of Maligne Lake makes up a charming alpine picture, but one must take the boat trip beyond the Narrows, nine miles from the chalet, where the upper part of the lake is revealed, to realize the full glory of this masterpiece, and to understand the praise it has drawn from all mountain lovers who have been fortunate enough to see it.

Beginning with Mount Samson (a jagged peak of ten thousand feet facing the Chalet on the left), the altitude of the peaks forming the Maligne group (Mounts Charlton, Unwin, Warren, Mary Vaux, and Maligne) gradually increases until, in Mount Brazeau, it reaches eleven thousand, three hundred and eighty feet.



The photographer will find many worthwhile shots along the Columbia Icefield Drive.



The mountains rise precipitously from the lake and are heavily laden with snow and ice. At the south-west end of the lake, farthest from the Chalet, lies a snowfield of considerable size, and leading in a southerly direction towards the Brazeau River district, along the western base of Mount Brazeau, is a high, broad snow pass, affording easy access to this intensely interesting neighbourhood. The mountains in the Maligne Lake district are admirably suited to both ice and rock climbing, and many comparatively easy climbs can be successfully undertaken by the amateur.

The mountains, meadows, and flowers of the alplands will prove of great interest to botanist and naturalist alike. Sheep, goats, caribou, moose, and deer frequent these pastures. The Opal Hills, facing the Chalet on the east, are the home of the sheep and the goat, while the mountain sides overlooking the lake, particularly those about the southeast, are used extensively by the mountain goat as a summer pasture.

### What to do at Maligne Lake

Hike to Maligne Pass, to the top of the Opal Hills, or to the haunt of the caribou at the summit of Bald Mountain.

Take canoe, rowboat, or outboard motor-boat trips on the lake, also a scenic motor-boat trip to the upper end of Maligne Lake, 34 miles return.

Fish for speckled trout in Maligne Lake, Mona Lake, and Maligne River.

Arrangements can be made for summer skiing by applying to Fred Brewster's Rocky Mountain Camps Limited.

### Transportation Schedule to Maligne Lake

Leave Jasper Park Lodge at 9.30 a.m., motor to Medicine Lake, take motor-boat across the lake, and proceed by motor-car to Maligne Lake, arriving at 1.00 p.m. The return journey is over the same route, leaving Maligne Lake Chalet at 2.30 p.m., and arriving at Jasper Park Lodge at 5.30 p.m.

Cost: return transportation as described, \$12.00 plus tax, per person. Charges at chalets, sightseeing motor-boat trip on Maligne Lake, etc., are extra.

Should a party wish to make the trip at any other than the regular scheduled times, an additional charge will be made.

### All-Inclusive Trips from Jasper Park Lodge to Maligne Lake and Return

*Two-day Trip.* Cost for transportation, one night's accommodation, four meals at Maligne Lake Chalet, and scenic motor-boat trip on Maligne Lake: \$25.50 per person in canvas houses, and \$29.50 per person in the four-room cabin.

*Three-day Trip.* Cost for transportation, two nights' accommodation, seven meals at Maligne Lake Chalet, and scenic motor-boat trip on Maligne Lake: \$33.50 per person in canvas houses, and \$41.50 per person in the four-room cabin.

### Boats and Canoes at Lakes in Maligne District

*Government tax, where assessable, is not included in rates given below.*

Canoes, skiffs, dinghies, and motor-boats, at Maligne, Medicine, Beaver, and Mona Lakes can be hired at the following rates:

*For fishing*—canoes, skiffs, and dinghies, with outboard motors: \$1.00 for the first hour, 50 cents for each additional hour; \$4.00 per day; \$20.00 per week. Without motors; 50 cents first hour, 25c for each additional hour; \$2.00 per day; \$10.00 per week.

*For cruising*—drive-yourself—outboard motorboats for five or more passengers: \$2.50 for the first hour; \$1.00 for each additional hour.

Gasoline for outboard motors is extra: 70 cents per gallon at Medicine Lake; \$1.00 per gallon at Maligne Lake.

Guides to row, paddle, or operate boats: \$7.00 per day, or \$1.00 per hour.

Round-trip boat fare on Medicine Lake (eight miles return) \$2.00 per person.

Round-trip boat fare on Maligne Lake (34 miles return): \$4.00 per person.

### MALIGNE RIVER ANGLERS' CLUB

Anglers visiting the Maligne area will have an opportunity, without additional expense, to qualify for membership in the Maligne River Anglers' Club. An angler who catches a speckled brook trout weighing not less than a pound qualifies for membership in the Maligne River Anglers' Club and receives a bronze lapel button. The angler who catches the heaviest speckled brook trout receives a gold lapel button, emblematic of the championship of the Maligne River Anglers' Club. The angler taking the second heaviest trout receives a silver button.

### TONQUIN VALLEY

Among the many beauty spots in the Canadian Rockies, none is more outstanding than the Tonquin Valley and that splendid range of mountains which rises along the spiral ridge of the continent from Mount Fraser northward, on the western boundary of Jasper National Park.

Tonquin Valley lies verdant, wide and open, high up on the shoulders of the great ridge that forms the Divide, at an elevation of 6,450 feet. Brilliant masses of wild flowers, the vivid greens of the coarse grass, and the dark velvety hue of pines, give the valley a smiling loveliness, which contrasts with and softens the unrelieved majesty of the black and jagged peaks. On every hand, too, are signs of wild life. Its waters are famous for splendid Rainbow Trout fishing.

Near the southern end of the valley is a beautiful sheet of water three miles long and about a mile wide, divided by a rocky promontory into two parts, forming what are known as the Amethyst Lakes. Their waters are pale in color with amethyst shadows running from the sides, a color probably due to vegetation, accentuated when seen from a height, which has given them their names.

Forming a great arc from southwest to northwest, the Ramparts stretch along the western side of the valley without a sign of vegetation to relieve their rugged majesty. At all hours the Ramparts are impressive, but they are most splendid at sundown.

This beautiful valley is second to none in its interest to the angler, the alpinist, and the photographer.

The main trail to the Tonquin Valley is in from View Point, the latter being sixteen miles from Jasper on the Cavell motor road. The route is along the northern slopes of Mount Sorrow to Verdant Creek. Crossing the latter, it traverses the base of the northeast corner of Throne Mountain and, at a distance of some four miles from the highway, crosses the Astoria River. The trail then follows the northwestern bank of the Astoria for two and one-half miles before swinging to the right. After a very short climb to open country, it crosses the alplands to the Amethyst Lakes, a distance of three and one-half miles.



### Transportation Schedule for Tonquin Valley

Leave Jasper Park Lodge at 9:00 a.m. and motor to View Point at the lower end of Cavell Lake, where guides, saddle-horses, and pack-horses are stationed to complete the trip. Luncheon is taken on the trail and the party reaches the Camp at 3:00 p.m. On return, leave Tonquin Valley Camp at 10:00 a.m. and arrive at Jasper Park Lodge at 4:00 p.m. Cost, for transportation by motor-car and saddle-horse, also luncheons on the trail, \$25.00 per person for the return trip. **Charges at Tonquin Valley Camp are extra.**

Distance from Jasper, 26 miles.

### All-Inclusive Three-Day Trip to Tonquin Valley

Cost for round-trip transportation and accommodation at Tonquin Valley Camp, \$42.50 per person.

### ACCOMMODATION AT CHALETS

*These chalets are operated by the Official Outfitters, Fred Brewster's Rocky Mountain Camps Limited. Reservations can be made direct or through the Manager of Jasper Park Lodge.*

**Medicine Lake Chalet**, elevation 4,500 feet, situated at the upper (south) end of Medicine Lake where the river enters it, is a log building containing dining-room, sitting-room, and sleeping accommodation for ten persons. Side trip to Beaver Lake—good fishing. A passenger launch and good fishing-canoes are available at Medicine Lake.

**Maligne Lake Chalet**, elevation 5,500 feet, situated on Maligne Lake at the outlet to Maligne River, comprises a central building 25' x 40', containing a living-room with big, open fireplace, a dining-room with a seating capacity of 30 persons, and a well-equipped kitchen. Along the front, and on one side, stretches a spacious, screened-in veranda from which visitors get a splendid view of the lake.

Sleeping accommodation at Maligne Lake Chalet is provided in a four-room cabin, and in heated canvas houses; accommodation for 20 persons.

*The Canvas Houses* have permanent wooden frames and floors, and 6 foot walls. Each is separately heated,

and amply lighted. The furnishings are similar to those of the four-room cabin, and include bureau, two chairs, grass rug, bedside mats, washstand, and two comfortable single beds.

Complete bath and toilet facilities are provided in a separate building.

Comfortable beds and plain but appetizing meals, guarantee the trail rider, angler, and other visitors an enjoyable stay.

**Shovel Pass Camp**, elevation 6,800 feet, located in Shovel Pass basin at timber line, is of sound construction, and provides comfortable accommodation for eight persons. Alpland hiking, rock climbing, mountain game, and flora. From this camp the visitor gets an excellent view of the Athabaska and Tonquin Valleys, also of the Rampart Range including Mount Geikie, of the Whirlpool Valley as far as the Continental Divide, and of the Columbia Icefield far away to the south.

**Tonquin Valley Camp**, elevation 6,500 feet, situated on the Amethyst Lakes at the base of the Rampart Range, comprises a central log building containing dining-room and kitchen. Comfortable sleeping accommodation is provided in floored and heated canvas houses; each is furnished with two single beds, washstand, mirror, stove, etc.

### RATES AT CHALETS AND CAMPS

(American Plan—including meals)

*Medicine Lake Chalet, Maligne Lake Chalet, and Tonquin Valley Camp remain open from July 1st to August 31st. Shovel Pass Camp is open from July 10th to August 31st. Provided sufficient notice is given, parties who wish to visit these camps before or after the regular season can make arrangements to do so.*

	Per Day	Per Week
Tonquin Valley Camp	\$8.00	\$53.00
Shovel Pass Camp	7.00	46.50
Medicine Lake Chalet	7.00	46.50
Maligne Lake Chalet		
Log Cabin Room	12.00	80.00
Heated Canvas Houses	8.00	53.00

Motor-boat service on Maligne Lake (34 miles return) \$4.00 per passenger, plus tax.



The Amethyst Lakes of Tonquin Valley are protected by the impressive Ramparts Range.



# JASPER PARK LODGE—General Information

TIME—Jasper Park Lodge follows Mountain Standard Time.

Distance from Station: 4 miles. Bus Fare: 50c per person each way.

Altitude—3,470 feet.

**Baggage—Incoming Baggage:** In order to avoid delay, baggage should be checked from starting point direct to Jasper Park Lodge. Guests are requested to present their baggage checks to the Lodge Porter immediately on arrival at Jasper Station.

**Outgoing Baggage:** Guests who wish to check baggage should present rail tickets to the Head Porter two hours before the departure of their trains. Those who have only hand baggage to check should secure tags from the Head Porter.

**Banks**—The Imperial Bank of Canada maintains a branch office in Jasper.

**Barber Shop, Shoe Shine Parlour, and Beauty Parlour** are located in the Main Building.

**Camera Supplies**—See "Film Developing Service" and "Novelty Shop".

**Canadian Immigration Requirements**—United States citizens do not require a passport to enter Canada, but it would be helpful for them to carry some proof of United States citizenship, such as a birth certificate.

**Church Services**—Church services for various denominations (Anglican, Roman Catholic, United Church) are held every Sunday in Jasper.

**Customs**—A Canadian Customs Officer is located at Jasper Park Lodge to facilitate the clearing of baggage of visitors from the United States.

**Dancing**—The Lodge orchestra provides dinner and evening concerts, also dance music from 9 to 12 o'clock every night, except Sunday.

**Electric Current**—A.C. 110-115 volts, 60 cycles, single phase. Outlets for electric razors are obtainable at Front Office.

**Express Service**—Canadian National Express, represented at Jasper, provides express service for shipments to and from all points in Canada, United States, and Great Britain.

**Film Developing Service**—Films left at the Novelty Shop before 9:00 a.m. will be returned the same day at 6:30 p.m.

**Guides for Mountain Climbing**—Provided sufficient notice is given, experienced guides can be obtained for parties desirous of mountain climbing.

**Laundry**—One-day service.

**Library**—A Lending Library is operated in connection with the Specialty Shop.

**Meal Hours**—Breakfast 7.00 a.m. to 9.30 a.m.  
Luncheon 12.00 noon to 2.00 p.m.  
Dinner 6.00 p.m. to 8.00 p.m.  
Snackroom open from 10.00 a.m. to midnight.

**Medical Service**—The services of a physician are available at all times, while a graduate nurse is in constant attendance.

**Money Orders**—Money Orders are sold at the Front Office.

**Motion Pictures**—A motion picture entertainment is given in the ballroom from 8 to 9 o'clock every evening, except Sunday.

**Novelty Shop**—A complete line of souvenirs, post cards, camera supplies, coloured glasses, etc., can be purchased at the Novelty Shop, operated in connection with the CIGAR and NEWS STAND. See also "Specialty Shop".

**Passenger Representative**—A Canadian National Railways Passenger Representative is located at the Lodge. He will assist guests in all matters pertaining to tickets, train and boat reservations, etc.

**Royal Mail Service**—A Post Office is located in the Main Building and a daily Royal Mail service is provided to and from Jasper Park Lodge. Mail should be addressed in care of Jasper Park Lodge Post Office, Alberta. Guests are requested to leave their forwarding address before departure.

**Safety Deposit Boxes**—Safety Deposit Boxes for the safe keeping of money and valuables are available to guests; apply at the Front Office. We cannot accept responsibility for money or articles not deposited therein.

**Specialty Shop**—An up-to-date Specialty Shop, located in the Main Building, carries a full line of imported woollen goods, handwoven articles, blankets, china, costume jewellery, ladies' sportswear, and an exclusive line of gentleman's sportswear, sweaters, socks, ties, etc. See also "Novelty Shop".

**Telegrams**—Canadian National Telegraphs, connecting with the Western Union Telegraph Co., maintains an office at the Lodge. A complete, world-wide telegraph and cable service as well as a telegraphic money order service is available. From the leading exchanges of the world come regularly the latest market reports on stocks and bonds.

**Telephones**—Long Distance Telephone connections can be made direct from all bedrooms.

**U. S. Funds** are accepted in payment of Hotel Accounts at the rate of exchange set by the Foreign Exchange Control Board.

**Valet**—Ladies' and gentlemen's valet service.

## WHAT TO WEAR

**At the Lodge**—The question of what to wear is entirely a matter of personal desire; no set rule is followed. While some ladies wear formal dress for dinner and dancing, others dress informally. Gentlemen usually wear flannels and coat; dinner jackets are seldom worn.

Because of the altitude of Jasper National Park, the summer evenings are usually cool. To ensure comfort, visitors should bring with them a medium-weight spring and Fall coat or wrap.

**For Motoring**—In addition to a medium-weight coat or wrap, gloves, and coloured glasses add to the comfort

of a drive. Low-heeled shoes are recommended for those who wish to explore points of interest at the scheduled stops along the drives.

**For Riding or for Trail Trips**—It is very important that visitors who intend to hike or ride the trails bring with them suitable clothing, including riding or hiking boots, woollen stockings or socks, woollen jacket or sweater, heavy breeches, flannel or mackinaw shirt, slicker, gloves, and suitable hat or cap. No responsibility will be assumed for the loss on the trail of valuables or personal equipment.



# Jasper Park Lodge

OPEN JUNE 15th TO SEPTEMBER 15th, 1947

## RATES—AMERICAN PLAN (Including Meals)

### Rooms with detached bath

*Though without private bath, each of these rooms has hot and cold running water; public baths and toilets are centrally located in each cabin.*

	Type	Per Day		
		SINGLE	DOUBLE	
16-room cabins (single rooms only)	J	\$ 10.00		Single bed
23-room cabin (single rooms, men only)	P	10.00		"
10-room cabins—back rooms	E	10.00	18.00	Twin beds
4-room cabins	D	11.00	19.00	" "

### Rooms with private tub bath

16-room cabins (single rooms only)	J	12.00		Single bed
10-room cabins	G	14.00	22.00	Twin beds
10-room cabins	H	15.00	24.00	" "
4-room cabins	C	17.00	26.00	" "

### Rooms with private shower bath

4-room cabins	M	15.00	24.00	" "
4-room cabins	N	15.00	24.00	" "

### Rooms with private combination tub and shower bath

4-room cabin	F	19.00	27.00	" "
4-room cabins	L	19.00	27.00	" "
8-room cabin	R	19.00	27.00	" "

Private sitting-rooms in Type L and Type R cabins ..... \$5.00 per day

*If the exclusive use of a 4-room cabin is desired by a party, the minimum charge will not be less than the average rate for six adults.*

### Rooms with connecting bath

#### Main Building—

2 persons in 2 rooms with connecting tub bath	\$30.00	} 8 rooms have double bed
3 " 2 " " " " " " " " " "	39.00	
4 " 2 " " " " " " " " " "	48.00	

#### TYPE S cabins—

*(Connecting rooms—one room has tub bath and the other has shower bath)*

2 persons in 2 rooms	32.00	} Twin beds
3 " 2 " " " " " " " " " "	41.00	
4 " 2 " " " " " " " " " "	50.00	

#### Type E cabins—

2 persons in 2 front rooms with connecting tub bath	26.00	} Twin beds
3 " 2 " " " " " " " " " "	34.00	
4 " 2 " " " " " " " " " "	42.00	

*Rooms in the Main Building and in Type S cabins, as well as front rooms in Type E cabins, are sold only en-suite.*

### Suites and private cabins

#### One-suite cabins with tub bath—Type A

One or two persons	38.00	} Twin beds
Three persons	45.00	
Four persons	52.00	

#### Two-suite cabins with tub bath—Type B

##### Rates for each half of cabin

One or two persons	38.00	} Twin beds
Three persons	45.00	
Four persons	52.00	
One to four persons occupying entire Type B cabin	76.00	
Five " " " " " " " " " " " "	83.00	
Six " " " " " " " " " " " "	90.00	
Seven " " " " " " " " " " " "	97.00	
Eight " " " " " " " " " " " "	104.00	

#### AA Cabin

One to four persons (minimum)	85.00
For fifth and sixth persons, each	10.00

#### Point Cabin

One to four persons (minimum)	110.00	} Bed equipment will be arranged to suit occupants
For each additional person from 5 to 8 inclusive	10.00	

#### Outlook Cabin—

One to four persons (minimum)	125.00
For each additional person from 5 to 8 inclusive	10.00

**Half rate for children under seven years, unless they occupy a separate room.**

**Rates for Single Meals:**—Breakfast, \$1.25. Luncheon \$1.50. Dinner, \$2.25.

Afternoon Tea can be obtained in the Snackroom.

**Bus Fare:**—Between station and Lodge (4 miles)—.50 per person each way. This includes the free transfer of hand baggage; it does not include the transfer of baggage which has been checked on rail transportation, charges for which are given below under "Checked Baggage."

**Checked Baggage:**—(Between station and Lodge) Grips—.30c per piece each way; Trunks—.50c per piece each way.





Jasper Park Lodge is set amid velvet lawns on the shore of beautiful Lac Beauvert. Colorful Pyramid Mountain in the background.

## ACCOMMODATIONS IN JASPER NATIONAL PARK

### ASTORIA HOTEL, Jasper

Open throughout the year. Rates: European Plan, from \$2.00 per day, single, and up; from \$3.00 per day double, and up. Rooms with and without bath. Lunch counter and dining room service.

### ATHABASCA HOTEL, Jasper

Open throughout the year. Rooms with and without bath. Rates: European Plan, from \$2.50 per day, single, and up; from \$4.00 per day, double, and up. Dining Room Service.

### BLACK CAT RANCH

Thirty-five miles by rail from Jasper. Excellent riding trails, comfortable modern accommodation. Rates: per person, American Plan, \$12.00 per day, \$70.00 per week.

### COLUMBIA ICEFIELD CHALET

Open June 15 to Sept. 30. Rates: American Plan with bath, from \$7.50 per day, single; from \$12.50 per day, double. Table d'hôte meals at reasonable prices. Located at the foot of the Athabaska Glacier, facing a panorama of mountains and glaciers, this is an ideal stopover point on the Columbia Icefield Highway for foot or horse trips over the Glacier.

### JASPER PARK LODGE (American Plan)

See page 33 for rates and accommodation.

### KIEFER'S KOSY KABINS

One and a half miles from Jasper on the Columbia Icefield highway. Accommodation 60 persons. Open May 15 to Oct. 1. Rates on application.

### MALIGNE LAKE CHALET

Thirty-two miles from Jasper, on the lake shore at the outlet to Maligne River. Open July 1 to August 31. Rates: per person, American Plan, log cabin room, \$12.00 per day; \$80.00 per week; heated canvas houses, \$8.00 per day; \$53.00 per week.

### MALIGNE LAKE TOURIST CAMP

Thirty-two miles from Jasper. Summer season only. Tent cabins. \$4.00 per day, American plan.

### MEDICINE LAKE CHALET

Twenty-two miles from Jasper, at the upper end of

the lake. Open July 1 to August 31. Rates: per person, American Plan, \$7.00 per day; \$46.50 per week.

### PINE BUNGALOW CABINS

One mile east of Jasper. Open May 1 to Oct. 1. Accommodation, 200 persons. Rates: \$3.00 per person and up, with or without housekeeping facilities.

### PYRAMID HOTEL, Jasper

Open throughout the year. Rooms without bath. Rates: European Plan, \$1.00 and up.

### PYRAMID PINES CHALET

On the shore of Pyramid Lake, 3½ miles from Jasper. Accommodation 20 persons. Rates: American Plan, \$4.00 per day.

### ROCKY MOUNTAIN BUNGALOW CAMPS

Four miles from Jasper on the Columbia Icefield Highway. Open May 1 to Oct. 1. Accommodation for 100 persons. Rates: Spring and Fall, 2 persons, \$4.00 and \$5.00 per day; 4 persons, \$6.00 per day; July and August, \$7.50 to \$15.00.

### ROCKY MOUNTAIN BUNGALOW CAMPS

At Miette Hot Springs. Open June 15 to Sept. 15. Accommodation for 50 persons. Rates: For 2 persons, \$5.00 per day and \$1.25 for each additional person. Dining room service.

### SHOVEL PASS CAMP

Accommodation 8 persons. Floored framed tents. Rates: Per person, American Plan, \$7.00 per day, \$46.50 per week.

### TONQUIN VALLEY CAMP

On the shore of Amethyst Lakes, 20 miles from Jasper by motor-car and ten miles by saddle-horse. Open July 1 to Aug. 31. Rates: Per person, American Plan, \$8.00 per day; \$53.00 per week.

### Y.M.C.A. CAMP, Lake Edith

Five miles from Jasper Station. Transfer service available from station to camp. Open July and August. Rates: Chalet rooms, \$3.50 per day per person; tent cabins, \$3.00 per day per person. American plan. Accommodation for 90 persons.

NOTE:—The Canadian National Railways, in furnishing the above list of rates and other information, assumes no responsibility as to its accuracy.



# ALL-EXPENSE TOURS

All-Expense Tours, covering stays of one to four days at Jasper Park Lodge, have been so planned that purchasers may cover the most ground in the least possible time and at the least expense. They include a selection of the most popular sightseeing motor drives, but do not include rail transportation to and from Jasper, or motor coach fares between Jasper and Columbia Icefield, Lake Louise, Banff, Calgary, etc.

The costs for All-Expense tours are based on the minimum rates for hotel room and meals. If superior type of accommodation is desired, give full particulars to your nearest Canadian National Railways' Representative, who will obtain quotation and reservation from the Manager of Jasper Park Lodge. The price of Tours shown herein does not include Government Tax where assessable.

All-Expense Tours are arranged for those arriving at, and departing from, Jasper Park Lodge as follows:

<b>Tours</b>	<b>Arriving via</b>	<b>Departing via</b>
11 to 14	Trains 1, 2, 3, or 4.	Trains 1, 2, 3, 4, or Prince Rupert Gateway.
21 to 24	Trains from Prince Rupert.	Trains 1, 2, 3, or 4.
31 to 34	Trains 1, 2, 3, or 4.	Motor coach to Lake Louise, Banff, etc.
41 to 44	Motor coach from Lake Louise, Banff, etc.	Trains 1, 2, 3, 4, or Prince Rupert Gateway.

## ONE DAY TOUR, No. 11

For the benefit of guests arriving at Jasper Park Lodge via trains 1, 2, 3 and 4, and departing via trains 1, 2, 3 and 4, or Prince Rupert Gateway via train 195.

<b>WESTBOUND</b>	or	<b>EASTBOUND</b>
<b>FIRST DAY</b> Arrive by Trains 1 or 3		<b>FIRST DAY</b> Arrive by Trains 2 or 4
<b>SECOND DAY</b> Leave by Trains 1, 3 or 195		<b>SECOND DAY</b> Leave by Trains 2 or 4

### DETAILED TOUR SCHEDULE

- FIRST DAY** —Transfer by motor to Jasper Park Lodge, on Lac Beauvert, four miles distant, where American Plan accommodation is provided.
- Afternoon** —Open for golf, tennis, boating, swimming, hiking, horse-back riding, motoring.
- Evening** —Dinner, motion pictures, bridge, dancing.
- SECOND DAY** —Leave the Lodge at 9:30 a.m. for a 40-mile motor drive to Mt. Edith Cavell and the Glacier of the Angel. This drive offers fine panoramas of the Athabaska and Astoria Valleys, and of numerous snow-capped peaks, including Mts. Signal, Tekarra, Kerkeslin, Hardisty, Franchere, The Throne, and the incomparable Mt. Edith Cavell. The highway, terminating at the foot of the famous Glacier, affords an excellent view of this vast field of living ice.
- Afternoon** —After luncheon at the Lodge, transfer by motor to Jasper Station.

### TOUR COST

	With detached bath	With private bath
Minimum-priced rooms		
Single rooms .....	\$15.00	\$17.00
Double rooms (per person) .....	14.00	16.00

## TWO DAY TOUR, No. 12

For the benefit of guests arriving at Jasper Park Lodge via trains 1, 2, 3 and 4, and departing via trains 1, 2, 3 and 4, or Prince Rupert Gateway via train 195.

<b>WESTBOUND</b>	or	<b>EASTBOUND</b>
<b>FIRST DAY</b> Arrive by Trains 1 or 3		<b>FIRST DAY</b> Arrive by Trains 2 or 4
<b>SECOND DAY</b> —At Jasper Park Lodge		<b>SECOND DAY</b> —At Jasper Park Lodge
<b>THIRD DAY</b> Leave by Trains 1, 3 or 195		<b>THIRD DAY</b> Leave by Trains 2 or 4

### DETAILED TOUR SCHEDULE

- FIRST DAY** —Transfer by motor to Jasper Park Lodge, on Lac Beauvert, four miles distant, where American Plan accommodation is provided.
- Afternoon** —Open for golf, tennis, boating, swimming, hiking, horse-back riding, motoring.
- Evening** —Dinner, motion pictures, bridge, dancing.
- SECOND DAY** —Leave the Lodge at 9:00 a.m. for an 80-mile motor trip down the valley of the Athabaska River, via the new Inter-Provincial Highway, to Punch Bowl Falls. A stop is made here before the trip continues along the Fiddle River Canyon through an entirely different scenic region to the famous Miette Hot Springs.
- Afternoon** —Leave the Lodge at 2:30 p.m. for the General Drive. This is a 28-mile motor trip to Maligne Canyon and through Jasper to Pyramid Lake. For full particulars, see Sightseeing Motor Drive No. 1, described on Page 27.
- Evening** —Dinner, motion pictures, bridge, dancing.
- THIRD DAY** —Leave the Lodge at 9:30 a.m. for a 40-mile motor drive to Mt. Edith Cavell and the Glacier of the Angel. This drive offers fine panoramas of the Athabaska and Astoria Valleys, and of numerous



snow-capped peaks, including Mts. Signal, Tekarra, Kerkeslin, Hardisty, Franchere, The Throne, and the incomparable Mt. Edith Cavell. The highway terminates at the foot of the famous Glacier.

**Afternoon** —After luncheon at the Lodge, transfer by motor to Jasper Station.

**TOUR COST**

<b>Minimum-priced rooms</b>	With detached bath	With private bath
Single rooms .....	\$34.00	\$38.00
Double rooms (per person) .....	\$32.00	\$36.00

**THREE DAY TOUR, No. 13**

For the benefit of guests arriving at Jasper Park Lodge via trains 1, 2, 3 and 4, and departing via trains 1, 2, 3 and 4, or Prince Rupert Gateway, via train 195.

<b>WESTBOUND</b>	or	<b>EASTBOUND</b>
<b>FIRST DAY</b> Arrive by Trains 1 or 3		<b>FIRST DAY</b> Arrive by Trains 2 and 4
<b>SECOND AND THIRD DAYS</b> At Jasper Park Lodge		<b>SECOND AND THIRD DAYS</b> At Jasper Park Lodge
<b>FOURTH DAY</b> Leave by Trains 1, 3 or 195		<b>FOURTH DAY</b> Leave by Trains 2 and 4

**DETAILED TOUR SCHEDULE**

- FIRST DAY** —Transfer by motor to Jasper Park Lodge, on Lac Beauvert, four miles distant, where American Plan accommodation is provided.
- Afternoon** —Open for golf, tennis, boating, swimming, hiking, horse-back riding, motoring.
- Evening** —Dinner, motion pictures, bridge, dancing.
- SECOND DAY** —Leave the Lodge at 9:00 a.m. for an 80-mile motor trip down the valley of the Athabaska River, via the new Inter-Provincial Highway, to Punch Bowl Falls. A stop is made here before the trip continues along the Fiddle River Canyon through an entirely different scenic region to the famous Miette Hot Springs.
- Afternoon** —Open for golf, tennis, boating, swimming, hiking, horse-back riding, motoring.
- Evening** —Dinner, motion pictures, bridge, dancing.
- THIRD DAY** —Leave the Lodge at 9:00 a.m. for a 150-mile trip to the Columbia Icefield. This drive follows the route of the Mount Edith Cavell Drive to a point beyond the crossing of the Astoria River, whence it continues along the valley of the Athabaska. From here the route penetrates through the very heart of the Canadian Rockies to the largest and most impressive icefield outside the Arctic Circle. With an estimated area of 110 square miles, the average elevation of this amazing icefield ranges from 9,000 to 10,000 feet, which, because the waters of its melting glaciers travel thousands of miles to three oceans, the Atlantic, the Pacific, and the Arctic, has been beautifully named "Mother of Rivers". Unquestionably, this is AMERICA'S GREATEST SCENIC DRIVE.
- Evening** —Dinner, motion pictures, bridge, dancing.
- FOURTH DAY** —
- Morning** —Leave the Lodge at 10:00 a.m. for the General Drive. This is a 28-mile motor trip to Maligne Canyon and through Jasper to Pyramid Lake. For full particulars, see Sightseeing Motor Drive No. 1, described on Page 27.
- Afternoon** —After luncheon at the Lodge, transfer by motor to Jasper Station.

**TOUR COST**

<b>Minimum-priced rooms</b>	With detached bath	With private bath
Single rooms .....	\$50.00	\$56.00
Double rooms (per person) .....	\$47.00	\$53.00

**FOUR DAY TOUR, No. 14**

For the benefit of guests arriving at Jasper Park Lodge via trains 1, 2, 3 and 4, and departing via trains 1, 2, 3 and 4, or Prince Rupert Gateway, via train 195.

<b>WESTBOUND</b>	or	<b>EASTBOUND</b>
<b>FIRST DAY</b> Arrive by Trains 1 and 3		<b>FIRST DAY</b> Arrive by Trains 2 and 4
<b>SECOND, THIRD AND FOURTH DAYS</b> At Jasper Park Lodge		<b>SECOND, THIRD AND FOURTH DAYS</b> At Jasper Park Lodge
<b>FIFTH DAY</b> Leave by Trains 1, 3 or 195		<b>FIFTH DAY</b> Leave by Trains 2 and 4

**DETAILED TOUR SCHEDULE**

- FIRST DAY** —Transfer by motor to Jasper Park Lodge, on Lac Beauvert, four miles distant, where American Plan accommodation is provided.
- Afternoon** —Open for golf, tennis, boating, swimming, hiking, horse-back riding, motoring.
- Evening** —Dinner, motion pictures, bridge, dancing.
- SECOND DAY** —Leave the Lodge at 10:00 a.m. for the General Drive. This is a 28-mile motor trip to Maligne Canyon and through Jasper to Pyramid Lake. For full particulars, see Sightseeing Motor Drive No. 1, described on Page 27.
- Afternoon** —Leave the Lodge at 2:30 p.m. for a 40-mile drive to Mt. Edith Cavell and the Glacier of the Angel. This drive offers fine panoramas of the Athabaska and Astoria Valleys, and of numerous snow-



capped peaks, including Mts. Signal, Tekarra, Kerkeslin, Hardisty, Franchere, The Throne, and the incomparable Mt. Edith Cavell. The highway terminates at the foot of the famous Glacier.

**Evening** —Dinner, motion pictures, bridge, dancing.

**THIRD DAY** —Leave the Lodge at 9:00 a.m. for an 80-mile motor trip down the valley of the Athabaska River, via the new Inter-Provincial Highway, to Punch Bowl Falls. A stop is made here before the trip continues along the Fiddle River Canyon through an entirely different scenic region to the famous Miette Hot Springs.

**Afternoon** —Open for golf, tennis, boating, swimming, hiking, horse-back riding, motoring.

**Evening** —Dinner, motion pictures, bridge, dancing.

**FOURTH DAY**—Leave the Lodge at 9:00 a.m. for a 150-mile trip to the Columbia Icefield. This drive follows the route of the Mount Edith Cavell Drive to a point beyond the crossing of the Astoria River, whence it continues along the valley of the Athabaska. From here the route penetrates through the very heart of the Canadian Rockies to the largest and most impressive icefield outside the Arctic Circle. With an estimated area of 110 square miles, the average elevation of this amazing icefield ranges from 9,000 to 10,000 feet.

**Evening** —Dinner, motion pictures, bridge, dancing.

**FIFTH DAY** —Morning open for golf, tennis, boating, swimming, hiking, horse-back riding, motoring.

**Afternoon** —After luncheon at the Lodge, transfer by motor to Jasper Station.

#### TOUR COST

Minimum-priced rooms	With detached bath	With private bath
Single rooms . . . . .	\$64.00	\$72.00
Double rooms (per person) . . . . .	\$60.00	\$68.00

### TOURS No. 21 - 24 INCLUSIVE

For the benefit of guests arriving at Jasper Park Lodge via train from Prince Rupert, and departing via train for the East or West.

**TOUR NO. 21—One and a half day visit**—Covers American Plan accommodation at Jasper Park Lodge, the General Drive, Mount Edith Cavell Drive as well as bus transfer between the station and the Lodge. Cost per person: with detached bath, single \$20.50, double \$19.50; with private bath, single \$22.50, double \$21.50.

**TOUR NO. 22—Two and a half day visit**—Covers American Plan accommodation at Jasper Park Lodge, the General Drive, Miette Hot Springs Drive, the famous Columbia Icefield Drive, as well as bus transfer between the station and the Lodge. Cost per person: with detached bath, single \$42.50, double \$40.50; with private bath, single \$46.50, double \$44.50.

**TOUR NO. 23—Three and a half day visit**—Covers American Plan accommodation at Jasper Park Lodge, the General Drive, Mount Edith Cavell Drive, Miette Hot Springs Drive, the famous Columbia Icefield Drive as well as bus transfer between station and the Lodge. It also permits open time for golf, tennis, horseback riding, swimming, etc. Cost per person: with detached bath, single \$56.50, double \$53.50; with private bath, single \$62.50, double \$59.50.

**TOUR NO. 24—Four and one half day visit**—Covers American Plan accommodation at Jasper Park Lodge, the General Drive, Mount Edith Cavell Drive, Miette Hot Springs Drive, the famous Columbia Icefield Drive, as well as bus transfer between the station and Lodge, with additional open time for golf, tennis, horseback riding, swimming, etc. Cost per person: with detached bath, single \$66.50, double \$62.50; with private bath, single \$74.50, double \$70.50.

### TOURS No. 31 - 34 INCLUSIVE

For the benefit of guests arriving at Jasper Park Lodge via train from the East or West, and departing via motor bus to Lake Louise, Banff, Calgary, etc.

**TOUR NO. 31—One day visit**—Covers American Plan accommodation at Jasper Park Lodge, the "Twilight Drive" to Punch Bowl Falls, as well as transfer from the station to Lodge. Cost per person: with detached bath, single \$12.50, double \$11.50; with private bath, single \$14.50, double \$13.50.

**TOUR NO. 32—Two day visit**—Covers American Plan accommodation at Jasper Park Lodge, the General Drive, Mount Edith Cavell Drive, "Twilight Drive" to Punch Bowl Falls, as well as bus transfer from the station to Lodge. Cost per person: with detached bath, single \$29.50, double \$27.50; with private bath, single \$33.50, double \$31.50.

**TOUR NO. 33—Three day visit**—Covers American Plan accommodation at Jasper Park Lodge, the General Drive, Mt. Edith Cavell Drive, Miette Hot Springs Drive, as well as bus transfer from the station to Lodge, with open time for golf, tennis, swimming, horseback riding or motoring. Cost per person: with detached bath, single \$42.00, double \$39.00; with private bath, single \$48.00, double \$45.00.

**TOUR NO. 34—Four day visit**—Covers American Plan accommodation at Jasper Park Lodge, the General Drive, Mount Edith Cavell Drive, Miette Hot Springs Drive, as well as bus transfer from the station to Lodge, with additional open time for golf, tennis, boating, horseback riding, swimming, etc. Cost per person: with detached bath, single \$52.00, double \$48.00; with private bath, single \$60.00; double \$56.00.



## TOURS No. 41 - 44 INCLUSIVE

For the benefit of guests arriving at Jasper Park Lodge via motor bus from Lake Louise, Banff, Calgary, etc., and departing via trains for the East, the West, or Prince Rupert.

- TOUR NO. 41—One day visit**—Covers American Plan accommodation at Jasper Park Lodge, the Mount Edith Cavell Drive, as well as bus transfer from the Lodge to station. Cost per person: with detached bath, single \$14.50, double \$13.50; with private bath, single \$16.50; double \$15.50.
- TOUR NO. 42—Two day visit**—Covers American Plan accommodation at Jasper Park Lodge, the General Drive, Mount Edith Cavell Drive, and the Miette Hot Springs Drive, as well as bus transfer from Lodge to station. Cost per person: with detached bath, single \$33.50, double \$31.50; with private bath, single \$37.50, double \$35.50.
- TOUR NO. 43—Three day visit**—Covers American Plan accommodation at Jasper Park Lodge, the General Drive, Mount Edith Cavell Drive, and Miette Hot Springs Drive, as well as bus transfer from Lodge to station, with open time for golf, tennis, swimming, horseback riding, etc. Cost per person: with detached bath, single \$43.50, double \$40.50; with private bath, single \$49.50, double \$46.50.
- TOUR NO. 44—Four day visit**—Covers American Plan accommodation at Jasper Park Lodge, the General Drive, Mount Edith Cavell Drive, and Miette Hot Springs Drive, as well as bus transfer from Lodge to station, with additional open time for golf, tennis, swimming, horseback riding, etc. Cost per person: with detached bath, single \$53.50, double \$49.50; with private bath, single \$61.50, double \$57.50.

### MOTOR COACH SERVICE OVER THE COLUMBIA ICEFIELD HIGHWAY BETWEEN JASPER and LAKE LOUISE, BANFF and CALGARY.

Roomy, modern, sightseeing coaches, operated by Jasper Park Lodge, leave the Lodge daily from June 15th to September 16th, for the Columbia Icefield, where connection is made with services to Lake Louise, Banff and Calgary.

#### SCHEDULE

**Between Jasper Park Lodge and Columbia Icefield**

**OPERATED BY JASPER PARK LODGE MOTOR TRANSPORTATION DEPARTMENT**

*Buses will call at Jasper Station to pick up passengers who are not guests at the Lodge.*

Read Down			Read Up		
9.00 a.m.	Lv. Jasper Park Lodge	Ar.	5.45 p.m.		
9.30 a.m.	Lv. Jasper	Ar.	5.30 p.m.		
12.30 p.m.	Ar. Columbia Icefield	Lv.	2.30 p.m.		

Between Columbia Icefield, Lake Louise, Banff and Calgary the service is provided by Rocky Mountain Tours and Transport Company and the Brewster Transport Company—Schedules are as follows:

#### ROCKY MOUNTAIN TOURS AND TRANSPORT COMPANY

2.00 p.m.	Lv. Columbia Icefield	Ar.	12.30 p.m.
6.00 p.m.	Ar. Lake Louise	Lv.	8.30 a.m.
7.00 p.m.	Lv. Lake Louise	Ar.	8.30 a.m.
8.30 p.m.	Ar. Banff	Lv.	7.00 a.m.
8.00 a.m.	Lv. Banff	Ar.	5.30 p.m.
11.00 a.m.	Ar. Calgary	Lv.	2.30 p.m.

#### BREWSTER TRANSPORT COMPANY

2.30 p.m.	Lv. Columbia Icefield	Ar.	12.00 noon
6.00 p.m.	Ar. Lake Louise	Lv.	8.30 a.m.
7.30 p.m.	Lv. Lake Louise	Ar.	8.30 a.m.
9.00 p.m.	Ar. Banff	Lv.	7.00 a.m.
8.00 a.m.	Lv. Banff	Ar.	5.30 p.m.
11.00 a.m.	Ar. Calgary	Lv.	2.30 p.m.

#### RATES

		BUS	PRIVATE CAR	
			1-5 Pass.	6 Pass.
Between Jasper Park Lodge or Jasper and Columbia Icefield	One way	\$ 6.25	\$ 31.25	\$ 37.50
"	Round trip	10.00	50.00	60.00
Lake Louise	One way	13.50	67.50	81.00
"	Round trip	22.50	112.50	135.00
Banff	One way	18.00	90.00	108.00
"	Round trip	27.50	137.50	165.00
Calgary	One way	20.55	130.00	158.00
"	Round trip	32.10	187.50	225.00

**Children under 12 years, half fare**

*Government Tax, where assessable, is not included in above fares*

**The above fares do not include meals at any point en route**

**Baggage Transfer via Motor Services**—The foregoing rates include the free transfer of a reasonable quantity of hand baggage; they do not include the transfer of trunks or other heavy baggage, charges for which (between Jasper Park Lodge or Jasper, and the following points) are: Columbia Icefield—\$1.25 per piece each way, Lake Louise—\$3.00 per piece each way, Banff—\$4.00 per piece each way.

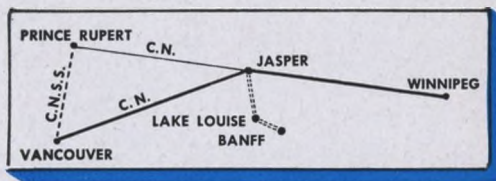


## PASSENGERS MAY INCLUDE BANFF AND LAKE LOUISE IN THEIR ITINERARY ENROUTE TO, FROM OR THROUGH JASPER

In order that passengers visiting the Canadian Rockies may enjoy the scenic features of both Jasper National Park and Banff National Park, the Canadian National Railways have made arrangements whereby motor transportation between Jasper and Banff and/or Lake Louise over the famous Columbia Icefield Highway may be purchased when railway transportation is secured, thus enabling passengers to complete transportation arrangements (both rail and motor) for the entire trip at originating point.

The motor side trip over the Columbia Icefield Highway from Jasper to Lake Louise and Banff and return may be purchased in connection with your Canadian National ticket reading to or through Jasper.

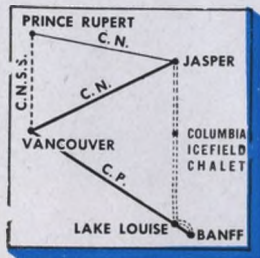
Or the motor trip may be incorporated in a circle tour of the principal resorts of the Canadian Rockies, as outlined below:



### EASTBOUND FROM OR VIA VANCOUVER

Canadian National Railways to Jasper direct or via C.N.S.S. and Prince Rupert (at slight additional cost to cover meals and berth on steamer)—motor transport over Columbia Icefield Highway to Banff or Lake Louise, thence returning via Canadian Pacific Railway to Vancouver, permitting stopovers as desired enroute.

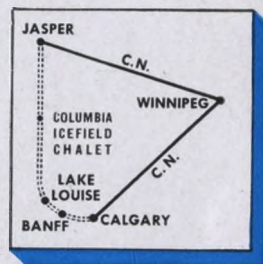
*This trip is also available in the opposite direction.*



### WESTBOUND FROM OR VIA WINNIPEG

Canadian National Railways to Jasper—motor transport over Columbia Icefield Highway to Calgary—thence Canadian National Railways to Winnipeg.

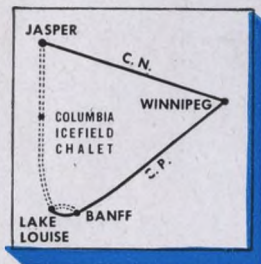
*This trip is also available in the opposite direction.*



### WESTBOUND FROM OR VIA WINNIPEG

Canadian National Railways to Jasper—motor transport over Columbia Icefield Highway to Lake Louise or Banff—thence Canadian Pacific Railway to Winnipeg.

*This trip is also available in the opposite direction.*



### TO AND FROM THE PACIFIC COAST VIA JASPER, BANFF, LAKE LOUISE

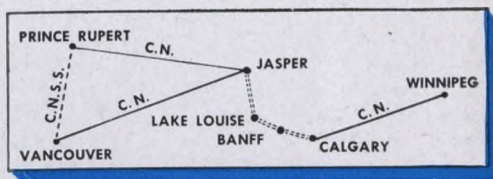
Passengers holding tickets to or from the Pacific Coast via Canadian National Railways may include the three mountain resorts of Jasper, Banff and Lake Louise, as follows:

#### Eastbound From or Via Vancouver

Canadian National Railways to Jasper direct or via C.N.S.S. and Prince Rupert at slight additional cost to cover meals and berth on steamer—motor transport to Calgary via Lake Louise and Banff thence Canadian National Railways.

#### Westbound From or Via Winnipeg

Canadian National Railways to Calgary—motor transport to Jasper via Banff and Lake Louise—thence Canadian National Railways to Vancouver direct, or via Prince Rupert and C.N.S.S. (at slight additional cost to cover meals and berth on steamer).

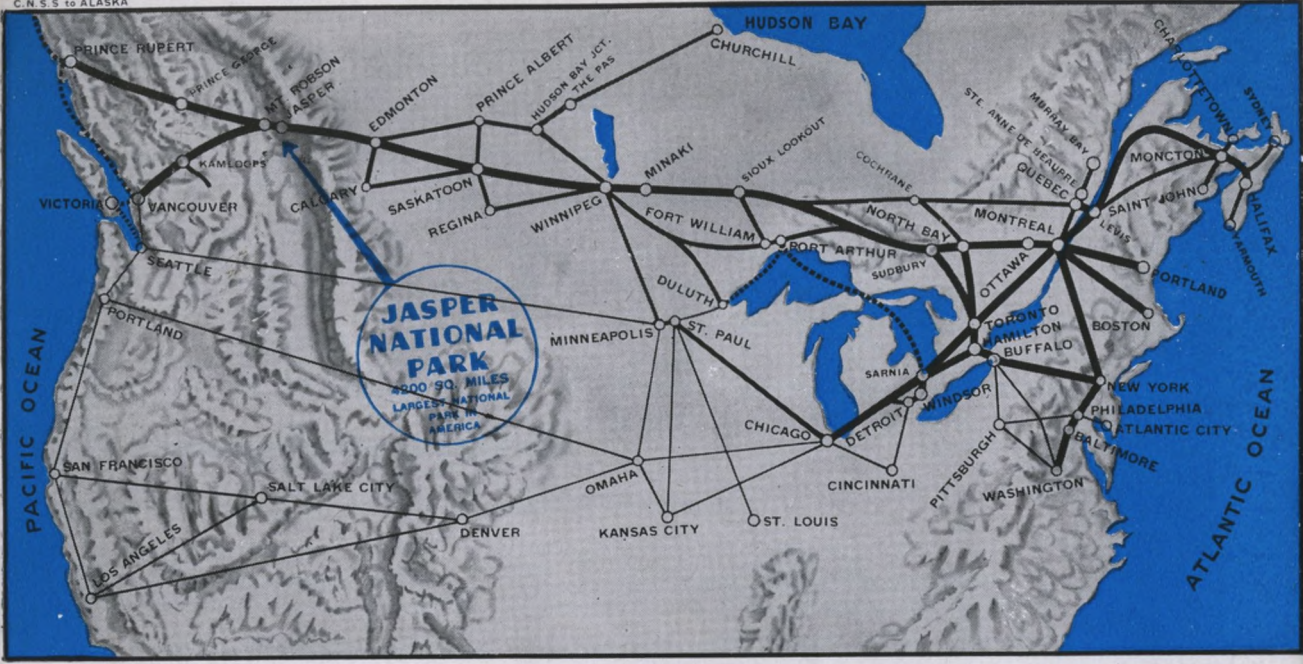


### BAGGAGE

**HAND BAGGAGE** will be carried free of charge on motor services between Jasper Park Lodge or Jasper, Alberta, and Lake Louise, Banff or Calgary. **TRUNKS AND OTHER BAGGAGE** will be checked by rail to the extent covered by rail transportation held by passengers. **TRUNKS AND OTHER HEAVY BAGGAGE** will be checked via truck service at regular tariff rates.

**NOTE:**—Alternative routes via Prince Rupert will be dependent on the operation of C.N.S.S. steamer service between Prince Rupert and Vancouver.





Map showing principal Canadian National lines and routes from important Canadian and United States centres to JASPER NATIONAL PARK in the Canadian Rockies. Summer excursion tickets are on sale to Jasper, Alta., during period May 15 to September 30th inclusive each year. In addition, one way, also round trip summer excursion tickets between Edmonton and east and Pacific Coast destinations are valid for stop-over at Jasper within limit.

## Canadian National Railways — Passenger Agencies

### CANADA AND UNITED STATES

Belleville, Ont.	243 Front St.
Boston 16, Mass.	497 Boylston St.
Brantford, Ont.	153 Colborne St.
Brockville, Ont.	Cor. King and East Market Sts.
Buffalo 2, N.Y.	13 West Genesee St.
Calgary, Alta.	218 Eighth Ave., West
Charlottetown, P.E.I.	C.N.Rys. Station
Chicago 3, Ill.	4 South Michigan Ave.
Cincinnati 2, Ohio	206 Dixie Terminal Bldg.
Detroit 26, Mich.	1239 Washington Blvd.
Duluth 2, Minn.	418 West Superior St.
Edmonton, Alta.	Cor. Jasper and 100th Sts.
Guelph, Ont.	67 Wyndham St.
Halifax, N.S.	Cor. Barrington and George Sts.
Hamilton, Ont.	7 James St., North
Jasper, Alta.*	Jasper Park Lodge
*During Season Jasper Park Lodge is open.	
Kansas City 6, Mo.	101 West Eleventh St.
Kingston, Ont.	115 Princess St.
London, Ont.	430 Richmond St.
Los Angeles 14, Cal.	607 South Grand Ave.
Minneapolis 2, Minn.	711 Marquette Ave.
Moncton, N.B.	C.N.Rys. General Office Bldg.
Montreal, Que.	384 St. James St., West
New York 20, N.Y.	Rockefeller Centre, 630 Fifth Ave.
Niagara Falls, Ont.	536 Clifton Ave.
North Bay, Ont.	203 Main St., West
Oshawa, Ont.	3 King St., West
Ottawa, Ont.	93 Sparks St.
Peterboro, Ont.	324 George St.
Philadelphia 7, Pa.	Broad and Chestnut Sts.
Pittsburgh 22, Pa.	355 Fifth Ave.

Portland 3, Me.	G.T.Ry. Station
Prince Rupert, B.C.	528 Third Ave., East
Quebec, Que.	10 Ste. Anne St.
Regina, Sask.	Union Station
St. Catharines, Ont.	13 Queen St.
Saint John, N.B.	49 King St.
St. Louis 2, Mo.	314 North Broadway
San Francisco 4, Cal.	648 Market St.
Saskatoon, Sask.	C.N.Rys. Station
Seattle 1, Wash.	1329 Fourth Ave.
Sherbrooke, Que.	23 Wellington St., North
Sudbury, Ont.	41 Durham St., South
Toronto 1, Ont.	N.W. Cor. King and Yonge Sts.
Vancouver, B.C.	{ 527 Granville St. Hotel Vancouver
Victoria, B.C.	911 Government St.
Washington 5, D.C.	922 Fifteenth St., N.W.
Windsor, Ont.	364 Ouellette Ave.
Winnipeg, Man.	Main St. and Portage Ave.
Woodstock, Ont.	414 Dundas St.

### EUROPE

London, S.W. 1, Eng.	17-19 Cockspur St.
London, E.C. 3, Eng.	95 Leadenhall St.
Liverpool, Eng.	Cunard Bldg., Water St.
Southampton, Eng.	Royal Mail House
Cardiff, Wales	35 St. Mary St.
Glasgow, C. 2, Scotland	107 Hope St.

### AUSTRALIA AND NEW ZEALAND

Sydney, Australia	"Scottish House," 19 Bridge St.
Melbourne, Australia	360 Collins St.
Wellington, N.Z.	Featherston Chambers

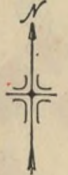
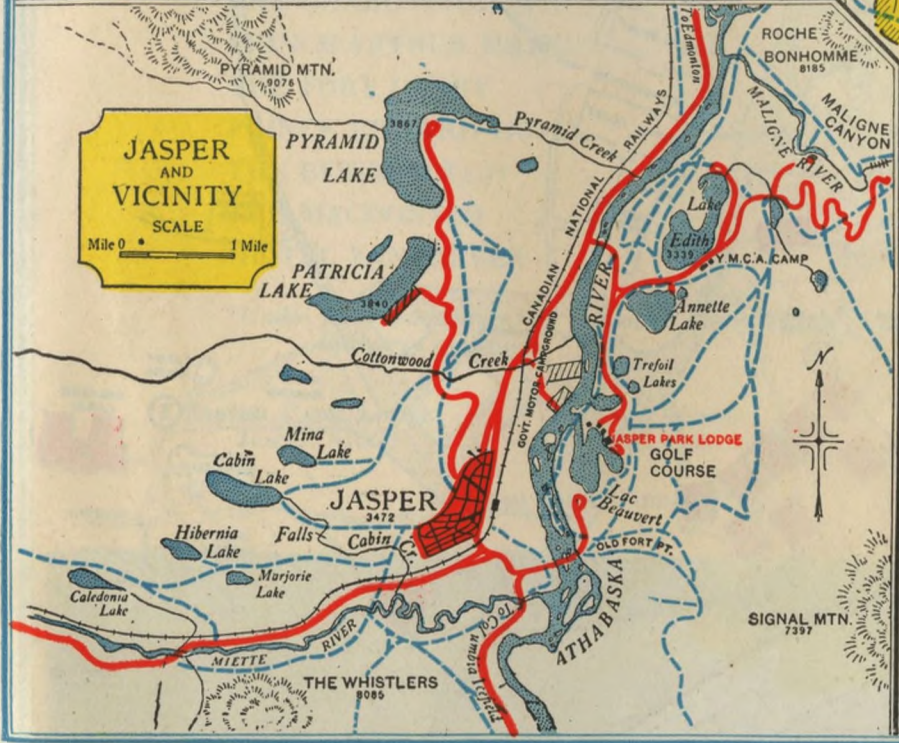
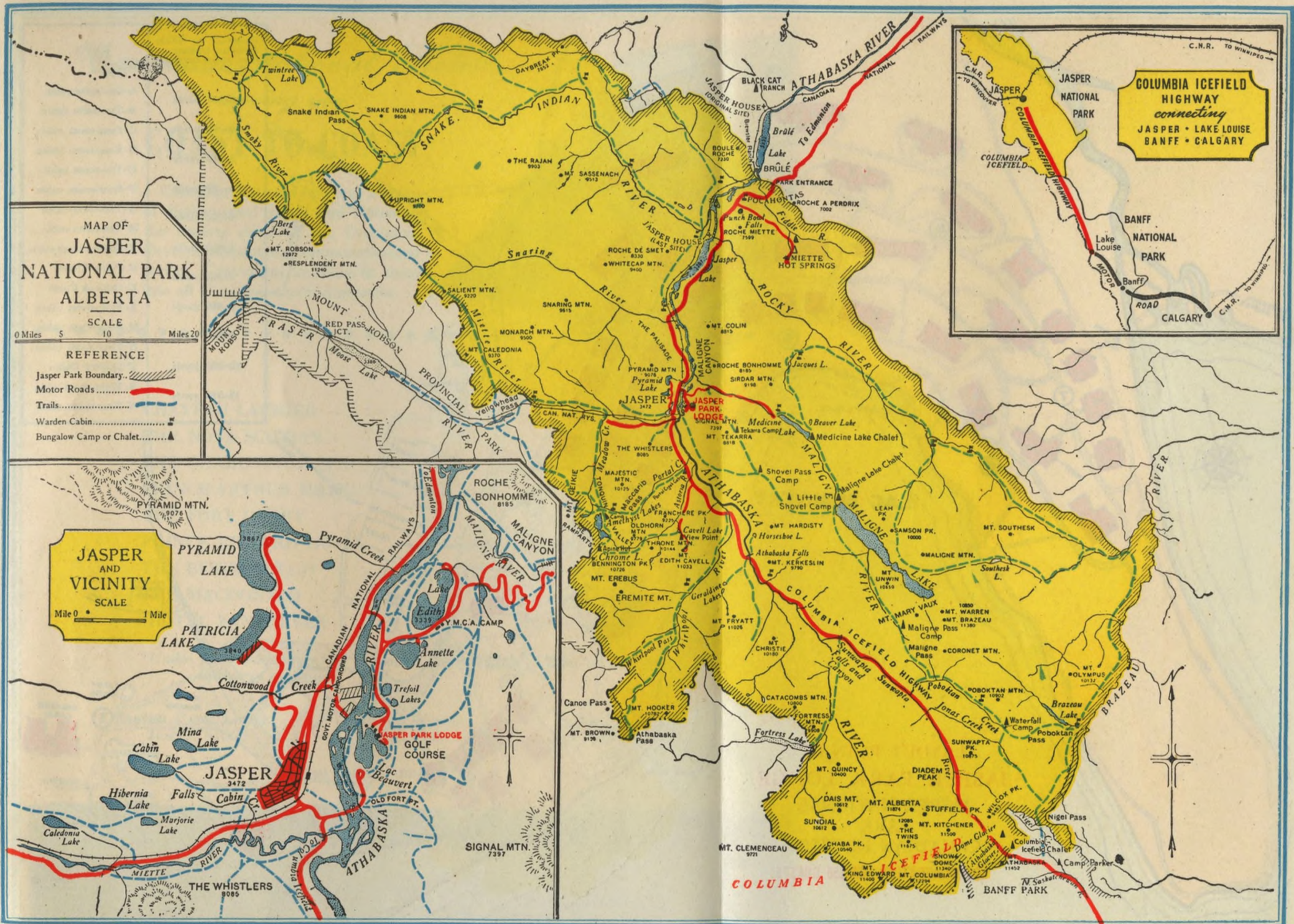


# MAP OF JASPER NATIONAL PARK ALBERTA

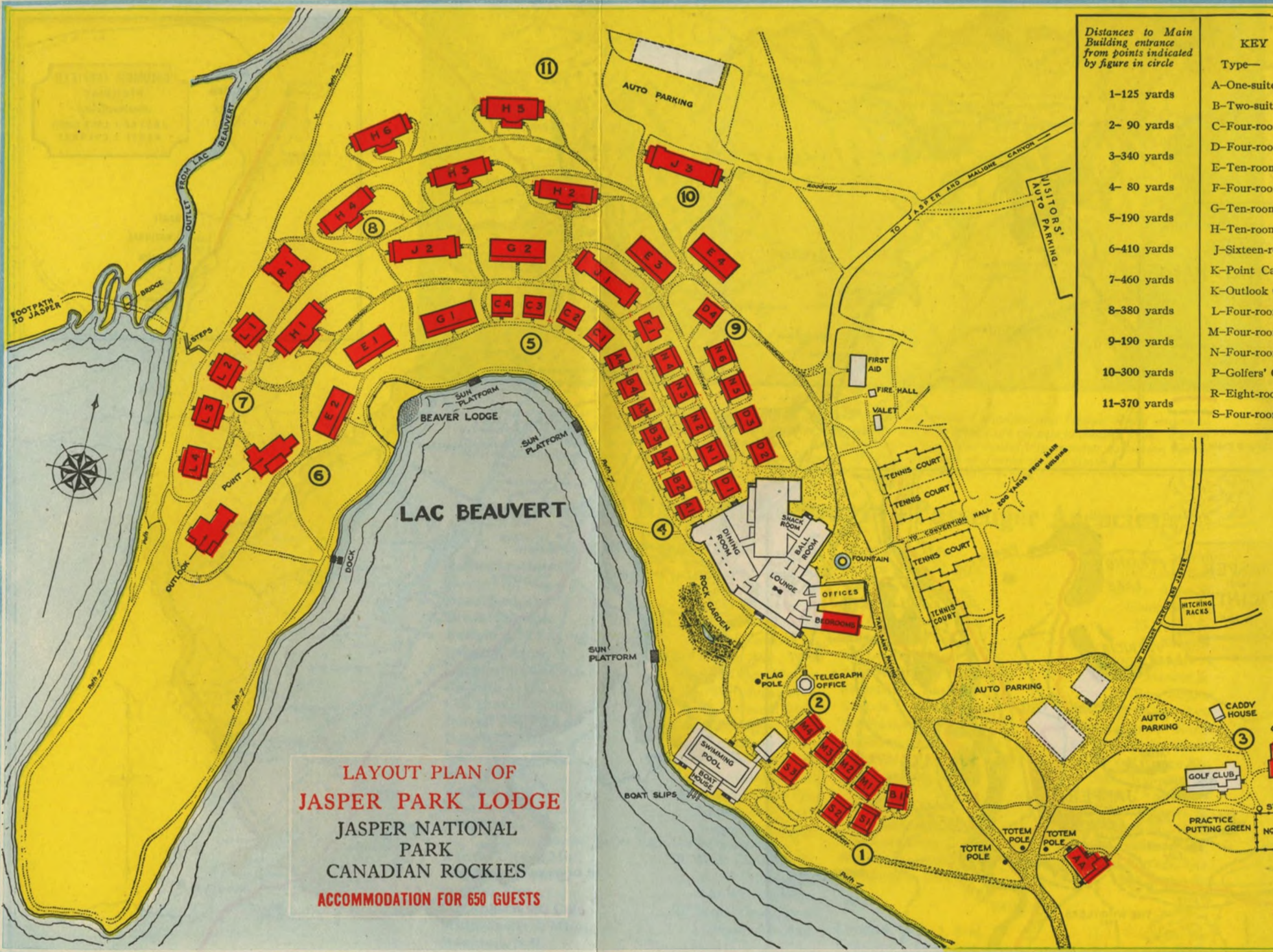
SCALE  
0 Miles 5 10 Miles 20

## REFERENCE

- Jasper Park Boundary.....
- Motor Roads.....
- Trails.....
- Warden Cabin.....
- Bungalow Camp or Chalet.....









# Canadian National Hotels

*serving you*

## COAST TO COAST

Canadian National operates a chain of distinguished year-round Hotels in the leading cities of the Dominion. Every refinement of accommodation and service. Convenient locations fit them into all Canadian travel itineraries.



CHATEAU LAURIER	- - - - -	Ottawa, Ont.
THE NOVA SCOTIAN	- - - - -	Halifax, N. S.
THE CHARLOTTETOWN	- - - - -	Charlottetown, P. E. I.
PRINCE ARTHUR HOTEL	- - - - -	Port Arthur, Ont.
THE FORT GARRY	- - - - -	Winnipeg, Man.
PRINCE EDWARD HOTEL	- - - - -	Brandon, Man.
THE BESSBOROUGH	- - - - -	Saskatoon, Sask.
THE MACDONALD	- - - - -	Edmonton, Alta.
*HOTEL VANCOUVER	- - - - -	Vancouver, B. C.

*\*Under joint management of Canadian National and Canadian Pacific Railway Companies.*



JASPER PARK LODGE  
Jasper, Alta.

MINAKI LODGE  
Minaki, Ont.

PICTOU LODGE  
Pictou, N.S.

Open during Summer Season.



cabin  
cabin  
n cabin  
n cabin  
a cabin  
n cabin  
a cabin  
a cabin  
oom cabin  
abin  
Cabin  
m cabin  
m cabin  
m cabin  
Cabin  
om cabin  
m cabin



STARTER  
NO 1 TEE

PRACTICE  
FAIRWAY

Minaki  
Lodge



# Jasper

*National Park*

**CANADIAN ROCKIES**

