

The Swimming Pool is a popular rendezvous at Jasper Park Lodge

ACTIVITIES IN JASPER NATIONAL PARK AND AT JASPER PARK LODGE

Trail riding, mountain climbing, hiking, motoring, golfing, tennis, boating, canoeing, fishing, swimming, dancing, motion pictures, and table tennis are among the recreational attractions. These activities are described briefly in the following pages. Further information may be obtained at the Motor Transportation Desk in the Main Building, Jasper Park Lodge.

With guests of the Lodge the swimming pool ranks as a very popular attraction. Constantly changing, crystal-clear water, filtered and heated before entering the pool, adds to the pleasure of a dip and ensures freshness.

Canoeing on Lac Beauvert is a favoured evening enjoyment. Boats and canoes are available for rent at 50 cents per hour.

Tennis is available to guests free of charge on four hard-surfaced courts. Guests should bring their own racquets. Tennis balls are sold at the Novelty Shop. Table tennis sets are located in the Main Lodge, Golf Club House and at the Swimming Pool.

Dancing—The Lodge orchestra provides dinner and evening concerts, also dance music from 9 to 12 o'clock every night, except Sunday.

Arrangements for golf on the Jasper Park Lodge Course can be made at the Golf Club House, situated 300 yards from the Main Building. A Professional of the highest standing as player, instructor, and club maker is in attendance. Equipment can be either purchased or rented. Rates: \$2.00 per person for 18 holes, \$3.00 per day. Caddies 75c for 18 holes.

Golf Week, September 1st to 7th, 1946. For special All-inclusive Rates from all points in Canada and the United States, see folder dealing with Seventeenth Annual Totem Pole Tournament.

Anglers will find excellent fishing for Eastern Brook Trout in the waters of Maligne Lake and River, as well as Medicine and Beaver Lakes. Other waters nearby offer Dolly Varden and Rainbow Trout, while the lakes and streams in the Tonquin Valley area provide fishing for Kamloops Trout. Chalet, or cabin accommodation, boats and guides are available. Fishing license \$2.25 per person.

Sightseeing motor drives—scheduled and special—may be made in luxurious passenger automobiles and buses. The

chauffeurs are experienced drivers, well versed in the history and lore of the Park. The trip to the Columbia Icefield—a region of spectacular glaciers and peaks—is particularly recommended. This is the largest accessible glacial deposit on the continent south of the Arctic, strewn in splendid disarray over 110 square miles of mountain area.

DETAILS OF THE MORE POPULAR DRIVES

No. 1: General Drive—Twenty-eight miles return. Motors leave the Lodge at 10:00 a.m. and 3:15 p.m. Time, approximately 2½ hours. Cost per person, \$3.00. This drive embraces a wide variety of valley, lake, canyon, and mountain scenery. The route, after following the Athabaska River, skirts Lakes Annette and Edith before gradually ascending the roadway to Maligne Canyon. On the return journey the tourist gets a glimpse of "the Raven," one of the largest totem-poles in existence. Continuing along to the foot of Pyramid Mountain and passing en route Lakes Patricia and Pyramid, the drive again runs through Jasper before terminating at the Lodge.

No. 2: Maligne Canyon—Twelve miles return. Motors leave the Lodge at 10:00 a.m. and 3:15 p.m. Time, approximately 1½ hours. Cost per person, \$2.00.—This canyon, into which the Maligne River plunges through a gorge 188 feet deep, ranks among the most extraordinary in the Canadian Rockies. The new fish hatchery on the lower Maligne River beyond Lake Edith is also of interest.

No. 3: Punch Bowl Falls—"A Twilight Drive"—Sixty miles return. Motors leave the Lodge at 7:00 p.m. Time, approximately 3 hours. Cost per person, \$3.50.—The route leads over the Athabaska River, to follow the completed section of the new Inter-Provincial Highway to Punch Bowl Falls and Valley. This trip is highly recommended, for after sunset it is usually possible to see sheep, goats, deer, bears, moose, etc. from the motor-car.

No. 4: Glacier of the Angel (Mount Edith Cavell)—Forty miles return. Motors leave the Lodge at 9:30 a.m. and 3:15 p.m. Time, approximately 3 hours. Cost per person, \$4.00.—Offering excellent motoring, this drive by a course of wide-sweeping switchbacks reaches an altitude of nearly 2,000 feet above the floor of the valley and gives the tourist an ever-changing series of strikingly beautiful panoramas. The highway affords an excellent view of this vast field of living ice.

The Jasper Park Lodge Golf Course is rated among the Continent's finest.



Light lunches and refreshments can be obtained at the Tea Room near the foot of the Glacier.

No. 5: Miette Hot Springs and Fiddle River Canyon—Eighty miles return. Motors leave the Lodge at 9:00 a.m. Time, approximately 4 hours. Cost per person, \$6.00. The route follows the Athabaska River down the Athabaska Valley to Jasper Lake and beyond to Punch Bowl Falls. The trip continues along the rim of the Fiddle River Canyon before finally reaching the famous Miette Hot Springs, where hot sulphur spring water comes boiling out of the mountain side. Motors will remain long enough to permit bathing.

The Swimming Pool and the Steam Baths at Miette Hot Springs are operated by the National Parks Department. The rates are:

Swimming Pool—When bathing suit and towel are supplied by the Department: adults, 35c; children, 25c. When bathing suit and towel are supplied by bather: adults, 25c; children, 15c. **Steam and Plunge Baths**—50c. per person.

No. 6: Columbia Icefield (Jasper-Banff Highway)—One hundred and fifty miles return. Motors leave the Lodge at 9:00 a.m. Time, approximately 7 hours. Cost per person, \$10.00. Minimum, 5 persons. The drive follows the route of the Mount Edith Cavell Drive to a point beyond the crossing of the Astoria River, whence it continues along the valley of the Athabaska. From here the route penetrates through the very heart of the Canadian Rockies to the largest and most impressive icefield outside the Arctic Circle. With an estimated area of 110 square miles, the average elevation of this amazing icefield is between 9,000 and 10,000 feet. Unquestionably, this is America's Greatest Scenic Drive.

Motor-car Services are available at all times between 6:00 a.m. and 12:00 midnight, at the regular tariff rates. After midnight, a charge of \$2.00 will be made for each car movement within the Lodge area; outside the Lodge area, special rates will apply for any car movement between 12:00 midnight and 6:00 a.m.

Government Tax, where assessable, is not included in the fares shown above.

SADDLE TRIPS

Arrangements can be made at the Transportation Desk in the Main Building for all scheduled and special short saddle trips, and for guide service.

RATES FOR SADDLE HORSES

Note: For a horse or a guide, one day consists of not more than nine (9) hours and not more than twenty (20) miles.

Mountain horses \$3.00 per half day, \$5.00 per day. Special rate of \$24.50 per week for reserved horses.

Saddle Trip No. 1: Jasper Park Lodge Sawdust Trail—Graded to a breadth averaging from ten to fifteen feet and sufficiently wide for a party of three to ride abreast, this new bridle path, rendered dustless by a generous application of sawdust, forms a circuit, with the Lodge itself as a centre. The trail leads through pine and fir forests, by lake shore and river bank, skirts the golf-course, and ascends to the bench below Signal Mountain offering charming vistas of the Athabaska Valley. Riding time, 3 hours.

Saddle Trip No. 2: Maligne Canyon—A ride of 12 miles return, over the back trails away from the motor roads and following the Athabaska Trail, traversing the entire length of Maligne Canyon. Riding time, 3 hours.

Saddle Trip No. 3: Golf Course and Old Fort Point (Hudson's Bay Table Top)—The route skirts the golf-course, proceeds up the Buffalo Prairie Trail and on to Old Fort Point. This trip affords a splendid view of the Athabaska Valley, the Lodge, Mt. Edith Cavell, and the mountains on both sides of the

upper river. Distance, seven miles return. Riding time, 2 hours.

Saddle Trip No. 4: Caledonia Lake—Fourteen miles return. Caledonia Lake, on a rocky bench above the Miette River, is reached by passing through Jasper and following the Miette road to Cabin Creek Bridge. Here the trail follows the left bank of Cabin Creek. Riding time, 4½ hours.

Saddle Trip No. 5: Pyramid Lake—Sixteen miles return. This trail leads through Jasper, crosses Cottonwood Creek Valley, and passes along the ridge above Pyramid Lake. Riding time, 5 hours.

Saddle Trip No. 6: Buffalo Prairie-Wabasso Lake—Twenty miles return. An interesting trail winding through beautiful scenery. Excellent fishing in the lake waters. Riding time, 5 hours.

In addition to the rides described herein, there are numerous others of interest. For those who enjoy riding at high altitude the Maligne Lake and Sky Line Trail Trip is of particular appeal. The combined motor drive and trail trip into Tonquin Valley, one of the outstanding beauty spots of the Canadian Rockies, is an impressive 52 mile return tour.

Full information can be obtained at the Transportation Desk in the Main Building.

Mountain climbers are offered an almost bewildering choice of objectives in Jasper National Park as practically every form of rock and ice work is possible. Hikers also have the choice of many miles of trails or roads. Hikes may be made with or without guides.

ALL-EXPENSE TOURS

In addition to the foregoing motor drives and saddle trips' visitors may purchase All-Expense Tours of Jasper National Park covering stays of one to four days. These Package Tours include the most popular drives and have been arranged to enable guests to make full use of their stay at Jasper Park Lodge. Tour rates are based on minimum rates for room and meals. Rail fares to and from Jasper, or motor coach fares between Jasper and Lake Louise, Banff, etc., are not included. Full details may be obtained from your nearest Canadian National representative or your Travel Agent, from whom the desired tour may be purchased in advance.

WHAT TO WEAR

At the Lodge dress is informal. The evenings being cool (altitude 3,470 feet), visitors should bring a Spring or Fall coat, or wrap.

For motoring, riding, fishing, hiking, etc., guests should bring suitable clothing.

RATES AT JASPER PARK LODGE

Open June 15th to September 15th, 1946

AMERICAN PLAN

Single, without private bath	- - -	from \$ 9.00 per day.
Single, with private bath	- - -	from \$11.00 per day.
Double, without private bath	- - -	from \$16.00 per day.
Double, with private bath	- - -	from \$20.00 per day.

No passport is required. Your vacation dollar goes farther in Canada.

Full information regarding fares, rates and reservations at Jasper Park Lodge and all matters pertaining to travel in Canada may be obtained from any Canadian National Passenger representative. Canadian National offices in the U.S.—Boston, Buffalo, Chicago, Cincinnati, Detroit, Duluth, Kansas City, Los Angeles, Minneapolis, New York, Philadelphia, Pittsburgh, Portland, Me., San Francisco, Seattle, St. Louis, Washington, D.C.

Re-discover

JASPER

National Park

Yours Again!

JASPER

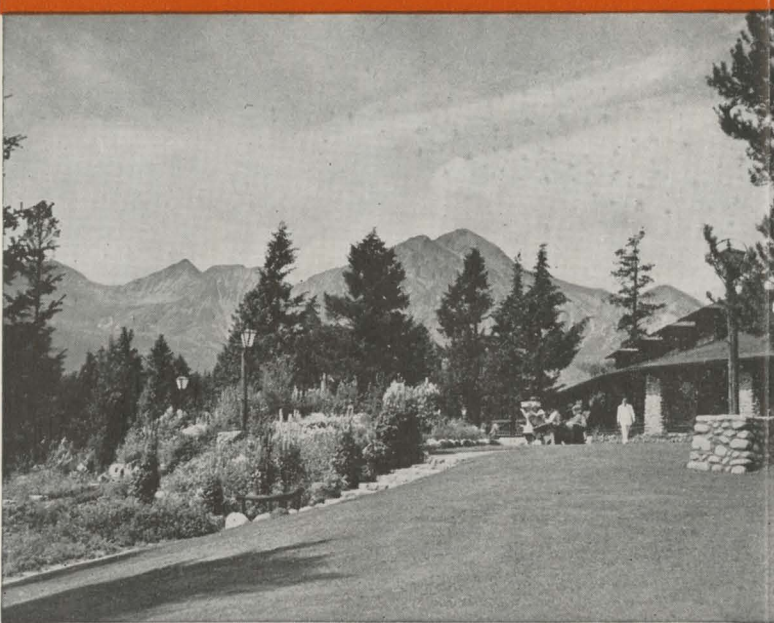
In the Canadian Rockies

CANADIAN NATIONAL

Railways

CANADIAN NATIONAL

Railways



Jasper Park Lodge, set amid velvet lawns on the shore of Lac Beauvert. Colorful Pyramid Mountain in background.

Jasper National Park

In the Canadian Rockies

Re-discover Jasper this year! Yours again are the delights of a holiday in the largest National Park in America. Here, amid the grandeur of the Canadian Rockies, in the broad valley of the Athabaska, stands Jasper Park Lodge, set amid velvet lawns overlooking lovely Lac Beauvert. Its attractive bungalows provide accommodation for 650 guests, and the spacious Main Lodge is the meeting place of experienced world travellers who return again and again to share the hospitality of this famous resort. Here you may ride, hike, swim in a heated pool, fish, play golf on a championship course, or motor to scenes of rare beauty. Or, if you prefer, you may just loaf and enjoy the delights of this marvellous vacation region.

Hundreds of miles of motor roads and trails radiate from Jasper Park Lodge to give access to the vast area of 4,200 square miles embraced within the Park. Highways lead to the Columbia Icefield, greatest glacial area south of the Arctic Circle, Mount Edith Cavell, Pyramid Mountain, Maligne Canyon, Miette Hot Springs. En route you can fill your album with scenic and action camera shots, including wild life,—

bear, deer, elk, mountain sheep and goat. Maligne Lake, largest glacier-fed lake in the Canadian Rockies and one of the world's beauty spots, is reached by motor and an easy trail trip beyond Medicine Lake. Exceptional scenery, plus speckled trout fishing in Maligne Lake and River, are your rewards on this trip.

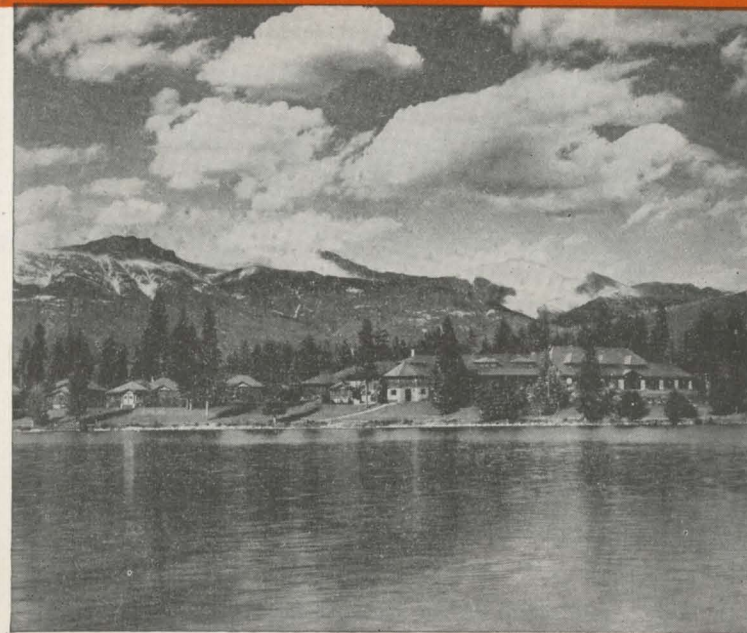
Riding is a favorite sport at Jasper, for astride a horse is possibly the best way to get to know the mountains. You may take your morning or evening ride over the "Sawdust Trail" which follows the Athabaska River and climbs the easy slopes of Old Fort Point, to give, in all, twelve miles of interest and fun ahorse. Guides are not necessary on the Sawdust Trail; and you may cut back at various points to shorten your ride if you so desire. Longer trail trips may be made with guides and outfits, stopping at conveniently located shelters and camp sites,—such as the Maligne Skyline Trail.

Golf at Jasper has all the appeal of a really good course, with the addition of scenery that makes it difficult to "keep your eye on the ball". Remodelled

and completely rebuilt, it ranks among the world's finest, challenging the par golfer and still offering a good chance for the medium player. If you're a golfer, be sure to bring your clubs to Jasper.

Plentifully stocked with Rainbow, Speckled and Dolly Varden trout, Jasper waters offer rare sport to the angler. Good fishing can be had on day jaunts from Jasper Park Lodge, or two or three day trips to the Tonquin Valley or Maligne Lake. These mountain trout take ordinary flies, but, like their brothers elsewhere, their moods are subject to the vagaries of wind and weather.

Are you a camera fan? You'll not need to go far beyond the Lodge and the nearby golf-course for interesting subjects,—action shots of deer and bear, amusing cubs, shy fawns. A tricky shot well worth getting in color is rainbow-hued Lac Beauvert with the image of distant Mt. Edith Cavell reflected on its surface. But wherever you go at Jasper you'll take your camera, and if you exercise reasonable care you'll be assured of good results in the clear atmosphere and brilliant light of the Canadian Rockies.



Centre of activities in this matchless mountain playground is luxurious Jasper Park Lodge.

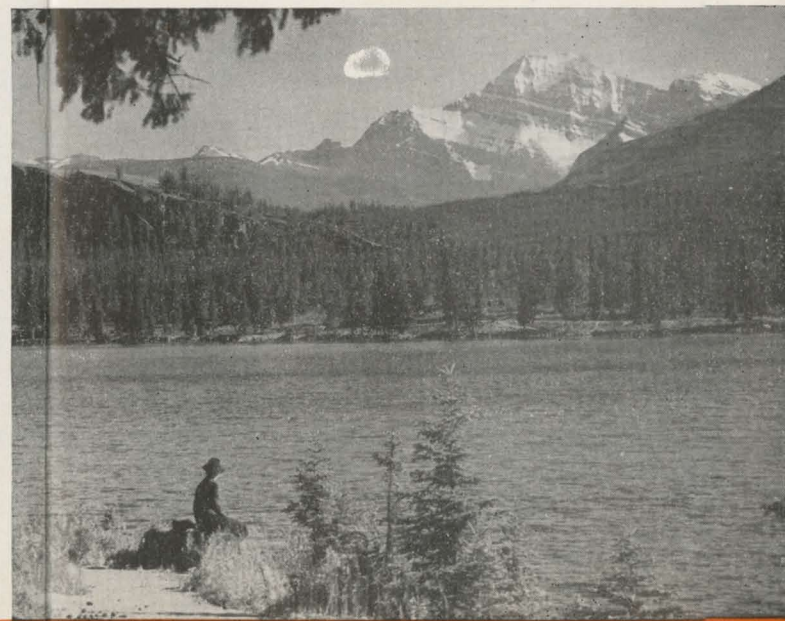
Trail riders view the unrivalled beauty of Maligne Lake and its encircling wall of glorious peaks.



The Astoria River in the Tonquin Valley offers "white water" fishing for Rainbow trout. The Ramparts form a spectacular backdrop.



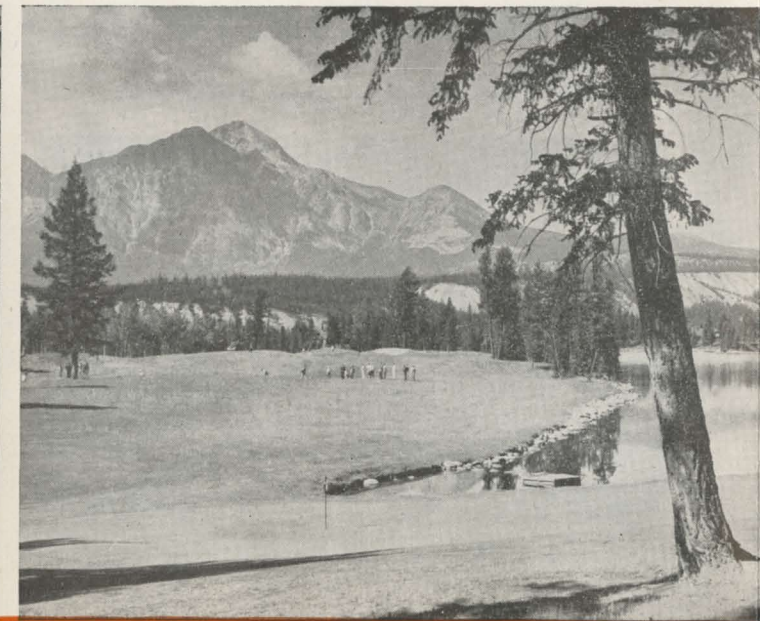
Majestic Mount Edith Cavell, as viewed across lovely Lac Beauvert.



The huge stone fireplace in the Main Lounge lends a friendly atmosphere.



The 16th Fairway of Jasper's championship golf course.



A spectacular view of the ice cap along the Sunwapta River on the Columbia Icefield Drive from Jasper Park Lodge.

