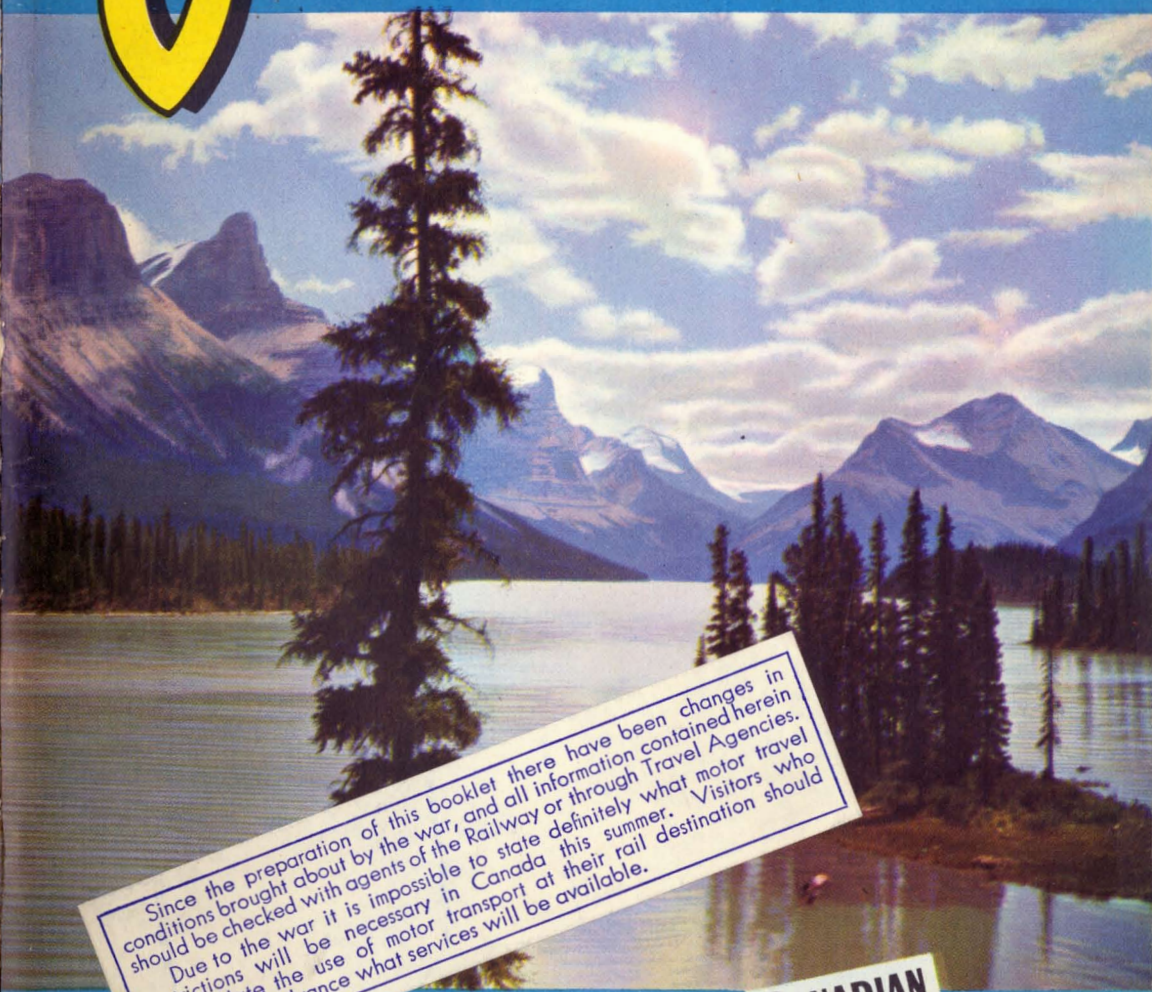


Jasper

NATIONAL PARK
CANADIAN ROCKIES



Since the preparation of this booklet there have been changes in conditions brought about by the war, and all information contained herein should be checked with agents of the Railway or through Travel Agencies. Due to the war it is impossible to state definitely what motor travel restrictions will be necessary in Canada this summer. Visitors who contemplate the use of motor transport at their rail destination should ascertain in advance what services will be available.

**CANADIAN
NATIONAL
RAILWAYS**

TO LOVERS OF THE CANADIAN ROCKIES every season has its own beauty. Spring, with its rush of melting snows and brilliant flowers, the long temperate summer with its abundant sunshine, autumn with its windless days and glory of color, the shining majesty of winter—each brings its special delight.

Whatever the season, the greatest charm of a mountain landscape remains its constant variability. The peaks never appear the same for two days. Clouds, sunshine, and changing light weave over them their infinite mutations.

In summer the average temperature during the day registers 60° to 75°F.; the nights delightful. The long twilights, with the pale yellow of the afterglow lingering behind the peaks, sometimes for hours after the sun has gone, lengthen the day's enjoyment. And even when full darkness comes the east will hold that ghostly glimmer of these northern latitudes, which is known as the "false dawn."

Thunderstorms are rare, and the absence of reptile pests and the comparative freedom from mosquitoes, all add to the comfort of outdoor life.

—from *JASPER*
Publication of the Dept.
of Mines and Resources.

**NO PASSPORTS
REQUIRED BY
U. S. CITIZENS TO
ENTER CANADA**

**A friendly welcome awaits
you at the Border and
throughout the Dominion**

Spend your American dollars as your needs arise in Canada. It is not necessary to change them at the Border. You may take out any unexpended portion of your funds. Canadian Law requires that you be paid the official premium set by the Foreign Exchange Control Board, wherever you go in Canada.

CONTENTS

Cover illustrations are from natural color and portray Maligne Lake, largest glacial lake in the Canadian Rockies, and a glimpse of Jasper Park Lodge.

	PAGE
ACCOMMODATION	
Jasper Park Lodge	6, 7, 9, 31
Town of Jasper and Vicinity	29, 40
ACTIVITIES	
Boating	32, 39
Camping Trips	35, 36, 37, 38
Climbing	22
Fishing	12, 13, 33, 39
Golf	10, 11, 33
Hiking Trips	38
Motoring	16
All-Expense Package Tours	41, 42, 43, 44
Between Jasper and Lake Louise, Banff, Calgary	45
Special Motor Services	34, 35, 45
Sightseeing Motor Drives	33, 34, 45
Photography	24, 25
Trail Trips	14, 15
Rates	35, 37, 38
Short Saddle Trips	36
All Day Saddle Trips	36
All Expense Trail Trips	35
Guide Service	35
Scenic Fresh Air Motor Drive	29
Skiing	26
Swimming Pool	32
Tennis	32, 33
GATEWAYS TO JASPER	
All rail or rail and motor	2, 46
JASPER PARK LODGE	
General Information (see also pages 6, 7, 9)	30
Rates (see also All-Expense Tours pages 41-45)	31
REGIONS OF UNUSUAL ATTRACTIVENESS	
Columbia Icefield	18, 19, 21, 34
Maligne District (Chalets, Transportation Schedules, Anglers' Club, etc.)	38, 39, 40
Miette Hot Springs	34
Tonquin Valley (Accommodation, Transportation Schedules, etc.)	39, 40
Mount Robson Park	27
MISCELLANEOUS	
Brewster's Black Cat Ranch	38
Canadian National Hotels	Inside Back Cover
Canadian National Equipment	47
Canadian National Representatives	Inside Back Cover
Historic and Physical Features	2, 3, 5
Maps—Canadian National System	48
Jasper National Park and Jasper Park Lodge layout of cabins	Inside Back Cover
Rates and Accommodation at Chalets	40
What to Wear	41
Wild Life, Flowers, Birds	23

I N T R O D U C T I O N

IT is something that Jasper is the largest national park in America. But mere size is not a virtue; the thing that counts is what makes up these 4,200 square miles. Jasper has quality as well as quantity. There may be spots as beautiful but there are none more beautiful. Here in the Canadian Rockies, Nature has splashed her colors with a lavish brush, and used the arts of magic to limn the contours of a world of almost indescribable grandeur. High peaks, bound by snow and ice the year round, magnificent and inspiring, are to be admired from below, (except by hardy alpinists); lesser mountains invite hikers and riders to their skyline trails; wide spreading valleys nurse along new-found routes young rivers which have found life in the tears of dying glaciers; waterfalls leap in a sheen of silver and a burst of diamond spray, and shimmer like jewels in the sun; tree-clad slopes and alpine meadows abound with wild animals hunted only with the camera.

To this natural beauty and wonder, man has brought his ingenuity. He has set up a modern hotel — Jasper Park Lodge — catering to 650 guests. He has added to it a championship golf course, one of the finest in the world; tennis courts, an open air swimming pool. He has cut trails for hikers and pony riders

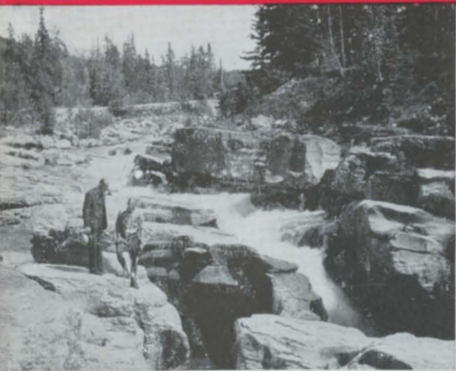
and tinted by the Master Craftsman

Opening and closing dates of Jasper Park Lodge are revised to: JUNE 15 - AUGUST 31. Golf Tournament (Sept. 6-12) will not be held. Sightseeing drives and other motor services, including motor coach service over the Columbia Icefield Highway, also All-Expense Tours listed on pages 41-46, will NOT be operated.

Natural Color Photograph.



HISTORICAL AND PHYSICAL FEATURES



More than any other part of the Rocky Mountains, that section of them which is enclosed by the boundaries of Jasper National Park has been identified with the colorful and romantic history of Western Canada. It was one of the rich fur domains for which the Hudson Bay Company and the Northwest Company fought bitterly early in the nineteenth century. Then traders and trappers, voyageurs and explorers, missionary priests and pagan Indians moved in procession up and down the Athabaska Trail which cuts through the heart of the Jasper Park of today. At a tiny lake almost on the crest of the watershed of the Whirlpool River, west and east bound brigades met, exchanged goods, toasted each other's health in a keg of rum and returned along their separate paths. This meeting place became known as the Committee Punch Bowl, a name it still retains. The names of David Thompson, Gabriel Franchere, David Douglas, Pierre de Smet and Sir James Hector recall a few of the heroic figures who are associated with the early history of Jasper. The name of the park itself perpetuates the memory of Jasper Hawes, an old servant of the Northwest Trading Company, whose post stood near the site of the present Town of Jasper.

Jasper National Park is situated in the western section of Central Alberta and its borders embrace 4,200 square miles of Rocky Mountain territory. It is served by the Canadian National Railways, whose air-conditioned Continental Limited makes it easily accessible through Winnipeg and Edmonton in the east, and Vancouver and Prince Rupert in the west.

Park Administration Headquarters and the Mounted Police Barracks are situated in the Town of Jasper.

Four miles from the town is located Jasper Park Lodge, the centre of social and tourist activity from the middle of June to the middle of September.

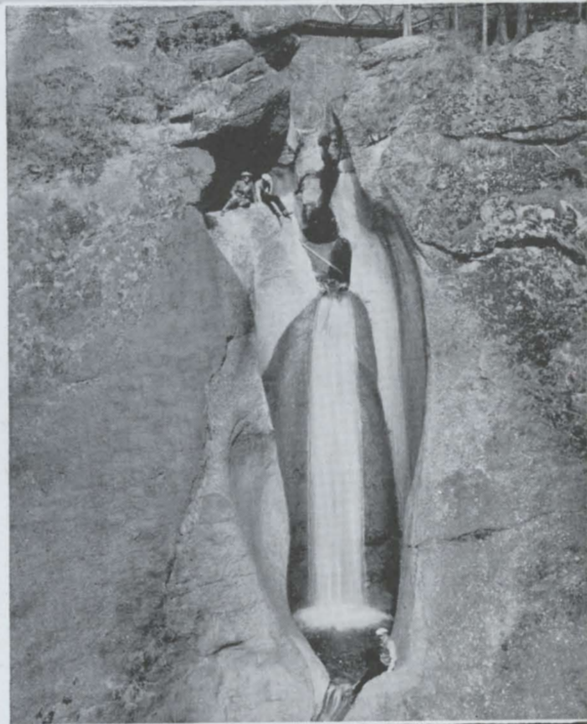
The Town of Jasper lies close to the Athabaska River near its

(Top) Cavernous pot holes of Maligne Canyon. (Centre) The monster Totem at Jasper Station. (Bottom) An intensely interesting section as seen from the Whirlpool River.

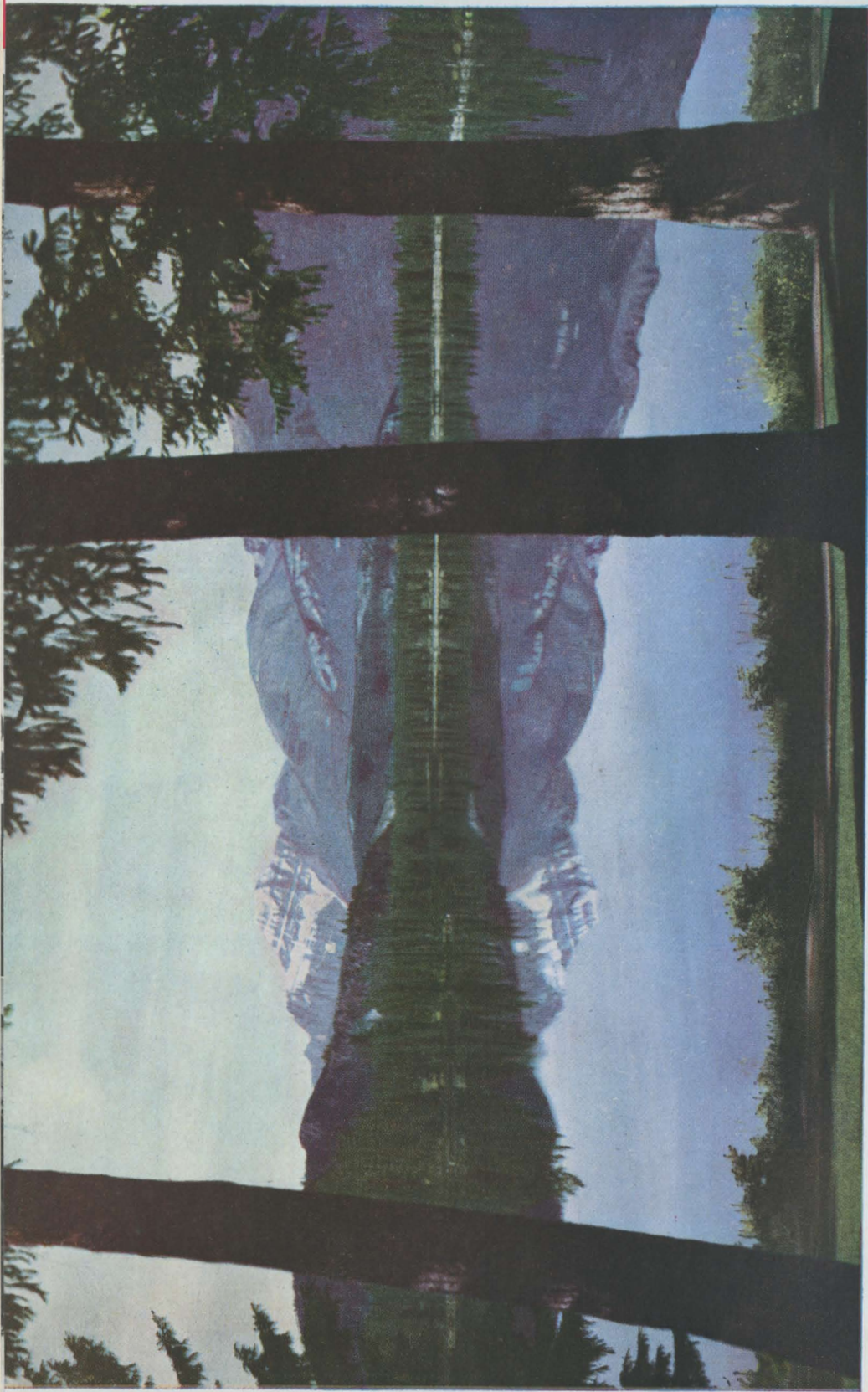


confluence with the Miette River. At this point the valleys of the two rivers meet and widen to form a great bowl which provides a splendid panorama of the surrounding ranges and peaks. These are as varied as they are numerous. To the east the wolf-grey ridge of the Colin Range saws at the sky and, in direct contrast, to the northwest looms the bulk of Pyramid Mountain, a symmetrical peak whose slopes are shot through with soft browns, maroons and purples. South-eastward, like the neglected bastion of some ancient castle, Mount Tekarra frowns upon the forests below. Then come in quick succession, Hardisty and Mount Kerkeslin, the latter with its terraced slopes looking like something transplanted from a Japanese print. To the southwest, splitting the Athabaska and Miette, rise the friendly forested slopes of the Whistler Range and then beyond them, almost directly south, in lone and regal beauty stands the matchless form of Mount Edith Cavell.

To see the full beauty of this playground it is necessary to take some of the motor drives which are available, or to heave oneself upon the broad back of a mountain pony and follow some of the wanton trails which seem to wander willy-nilly through the



(Top) Circling about, in an enormous wall that rises almost directly from Maligne waters, are more than a score of glorious peaks. (Centre) Punch Bowl Falls. (Bottom) Sunwapta Falls.



Majestic Mount Edith Cavell mirrored on placid Lac Beauvert presents this serene and lovely view from the lawn of Jasper Park Lodge.

Natural Color Photograph.



Along the scenic drive to Columbia Icefield, and (right) Majestic Mount Kerkeslin.

forests, the valleys and the upland meadows where the wind blows free. A highway leads to the overwhelming splendour of the Columbia Icefield with its cloud-piercing peaks and gigantic glaciers. Highway and trail give access to the unrivaled beauty of Maligne Lake in whose emerald facets are mirrored the glittering silver of the snowcapped mountains which crowd close upon its upper shore; to the Tonquin Valley against whose lush bosom nestle three liquid gems wherein are imprisoned the image of the stern,

forbidding Rampart Range. Nor are these all. There is the rushing turbulence of the Rocky River forcing its way through box-like canyons as it hurries to its wedding with the Athabaska. There is Shovel Pass far above timber line where in July and August millions of flowers blossom almost unheeded and unseen close to the still melting snows. Beyond these there are many others just as beautiful and many which even in this day and age wait to respond to the first footstep of a human being.

An impressive view of the vast ice cap seen from Columbia Icefield drive, and (right) Mount Christie, 10,180 feet.



JASPER PARK LODGE

The men who designed Jasper Park Lodge created a masterpiece. Using only the simple materials of the nearby mountains and forests, they fashioned a summer resort which achieves the miracle of combining luxury with simplicity, of having spaciousness without bulk, and which is as much a part of its surroundings as are the trees and the peaks. It is hard to believe that in the modest-looking bungalows tucked among the trees or facing the broad lawns that flow eagerly down to the shore of Lac Beauvert, there is ample accommodation for six hundred and fifty guests. It is harder still to realize that within their hospitable doors, these bungalows provide every comfort and convenience that a discriminating traveler could expect. Yet, it's so.

The Lodge consists of a large main building containing the administrative offices and the public rooms, and from it the bungalows radiate in fan formation along paved walks that are generously and attractively landscaped. The bun-

galows vary in size from one suite to sixteen rooms. All are complete in every detail with telephone, electric light, heat, hot and cold running water in every room. Most of the rooms are equipped with bath or shower and there are one or more detached baths in every bungalow.

The front of the Main Lodge provides a view over the wide, velvety lawns, flower beds and rock garden, to Lac Beauvert, one of the most beautiful lakes in the Rockies. It is around this lake that the bungalows are situated. It is a small lake but its coloration is a source of interest and delight. When the skies are clear, the water is almost an aquamarine. When passing clouds trail their shadows across it, bands of color sweep its surface until it glows like an opal. Comfortable chairs, beneath gay umbrellas, dot the lawns and are found at vantage points along the shore.

Beyond Beauvert the view discloses the soft symmetry of the Whistler Range, the glacier and snow-tipped





crown of Mount Edith Cavell and the long penetration of the upper Athabaska Valley among the peaks. To the right stands the painted escarpment of Pyramid Mountain and to the left, the castellated summit of Tekarra. Behind the Lodge rise the wolf-grey walls of the Colin Range with the figure of the Old Man recumbent athwart its crest. Masses of brilliantly - colored flowers among the lawns contrast vividly with the sternness of the peaks and the contrast serves to accentuate the beauty of both. Tall shrubs hide the outline of the open-air heated swimming pool by the lake in front of the lodge, but do not screen from view the graceful flight of the divers. This pool has a railed-off wading end for children.

There are a limited number of bedrooms in the large central building, or the main lodge, as it is usually called. This building, however, is meant almost entirely for the use of all the guests. In it are located the huge lounge with its two great log-burning fireplaces, the ball room, dining room, snack room, tavern, barber shop, beauty parlor, shops, reservation desk and other facilities which are a standard part of any modern hotel. The dining room can seat 400 guests at a sitting and 300 people can dance comfortably in the ball room.

The hostess arranges introductions, organizes picnics and other entertainment for the children and provides



(Top) Modern auto buses transport guests between Jasper Park Lodge and station. (From bottom up) Two-Suite Cabin, One-suite Cabin, Outlook Cabin, Point Cabin.



Jasper Park Lodge, a jewel in its magnificent setting, stands on the shore of beautiful Lac Beauvert. Beyond is Roche Bonhomme, "The Old Man".

Natural Color Photograph.



assurance that each guest's visit to the Lodge will be pleasant. A fully equipped medical department with a doctor and trained nurse constantly on duty is maintained at the Lodge. A Customs Officer is stationed at the Lodge.

In addition to the golfing facilities, the Lodge also has several excellent tennis courts and maintains a fleet of rowboats and canoes on Lac Beauvert. Qualified guides can be secured for alpinists, providing sufficient advance notice is given.

No description of Jasper Park Lodge would be complete without a word about its food and dining room service, for both of which it is justly famous. Only the best food available is served and the menu always offers a wide choice of dishes. Music is provided during the dinner hour by an excellent orchestra which also plays dance music in the ball room each night except Sundays.



(Top) The Pool, with its pure sparkling water, is warmed to an agreeable temperature. (Centre) Main Dining Room; up-to-date Specialty Shop. (Below) Office, Main Lodge.

GOLF

The Jasper Park Lodge Golf Course is rated among the truly great courses of the world by experts whose opinions are respected.

The first tee rests invitingly just two hundred yards from the main building of the lodge. The eighteenth green spreads its emerald lap about one hundred feet from the first tee. In between stretch four of the grandest miles of tees, fairways and greens that any golfer has set eyes on. The fairways are gently undulating. And although the course is set down right in the heart of the Rockies amid scenery that makes it hard for players to keep their eye on the ball, there isn't an uphill drag worthy of the name over the whole route.

There are a number of reasons why Jasper Park Lodge Golf Course has won a high rating. It is a championship course in every sense of the term. No two holes have the same length. No two have the same character. There is a shot for every club in the bag and never a chance for a good player to ease up.

The Jasper Park Lodge Golf Course, rated among the Continent's finest. Its unmatched pictorial setting, broad fairways and beautifully contoured greens, its traps, bunkers and water hazards, assure an interesting game.

10





Making a Par 4 on the 14th Green.

There is no rough between the tee and the fairway; it is fairway from tee to green.

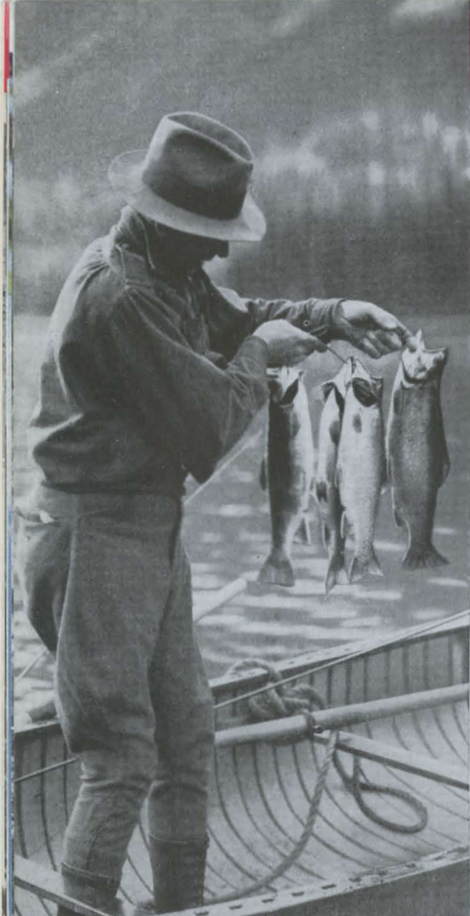
The Jasper Park Lodge course is skillfully bunkered, the greens, in some instances, almost diabolically trapped, but because these hazards have been designed to penalize the low handicap player who is off-line on his drives or short on his approaches, the average golfer who is in Seventh Heaven if he breaks a hundred, can have a grand time at Jasper. The course is always in perfect condition. The Greenskeeper has been awarded the highest honor in its power to bestow by the P.G.A.—Life Membership in the Greenskeepers' Union—because of the unfailing excellence of his greens and fairways.

There are three water holes. One is the tenth and the pool contains rainbow trout who do their best to disturb a tee shot by leaping about in the pool. The second is in the fourteenth, a tricky drive across an arm of Lac Beauvert. The third is the sixteenth where the green is trapped by an inlet of the same lake and except in rare instances is out of sight from where an approach shot is being played.

There are other hazards, too, none of them designed by the architect who mapped the course. At any moment a bear or two may saunter from the woods and meander across the fairway. A deer and fawn or even an elk, now and then,

may block an approach shot to the green and the player who lands in the rough may have to shoo a porcupine up a tree before he can make a recovery. Occasionally, beaver prove an added distraction at the fourteenth and sixteenth water holes, and a Cow bird or Buffalo bird hopping nonchalantly across your line of drive may increase the difficulty of a drive from several tees, notably the seventh and eighth. But at least there will be some consolation in knowing that such hazards don't exist on any other golf course, and that if you wait long enough they'll move away of their own accord. That's more than can be said of a bunker.

While every week at Jasper is a great golf week, Totem Pole Week is the greatest of all. This is scheduled always for early September and it attracts one of the friendliest crowds of people to be found under one roof anywhere at any time. That week the Lodge is like a club and everyone has a grand time whether he plays or merely talks a good game. Principal event of the week is the championship flight for the unique Totem Pole Trophy. But that is only one of many events. For four of the seven days of the tournament every competitor, man or woman—and there is a wide selection of events for women—has a chance for a prize. In that particular also, golf at Jasper differs from golf elsewhere.



Tight Lines and Happy Landings! That's a toast that anglers realize in Jasper—for here is a plenitude of game fish—trout of various species, Eastern Brook, Dolly Varden and Rainbow—in waters particularly suited to them, cold glacial lakes and tumbling mountain streams. And between casts even the most ardent sportsman may pause to marvel at his surroundings, for no other region on the continent offers a more arresting combination of woods and water and lofty peaks.

The Maligne region is noted for the sport it offers. Here, Eastern Brook (speckled) Trout were planted a number of years ago, and now they are found in Maligne and nearby lakes, and in the Maligne River, where pools and white water alternate over its length of ten miles, from the pool at the outlet of Maligne Lake to where it empties into Medicine Lake. If added inducement were necessary it is found in the Gold Button of the Maligne River Anglers' Club, awarded for the year's largest Speckled Trout taken with the fly.

12





Jasper's well stocked lakes and streams afford excellent fishing for Dolly Varden, Speckled and Rainbow Trout. Note these catches from Tonquin and Maligne waters.

In Jacques Lake Dolly Varden trout are found, and in a number of lakes in the Athabaska Valley are Rainbows and Speckled Trout. Rainbow Trout are also taken in Hardisty Creek, but the best fishing for this fighter is to be had in Tonquin Valley waters, Amethyst and Moat Lakes and connecting and feeder streams. Fish here run up to three pounds in weight. This region is reached by motor and trail from Jasper and rare sport is assured.

These mountain trout are susceptible, as are all their brothers wherever they may be found, to the vagaries of wind and the barometer, but normally they strike the flies used in lower altitudes.

A licence is required to fish in Jasper National Park. This can be obtained at the Transportation Desk in the Main Lodge after arrival at Jasper, or from the Park Wardens. Cost, \$2.25 per person.

(Further detailed information on pages 33, 39)



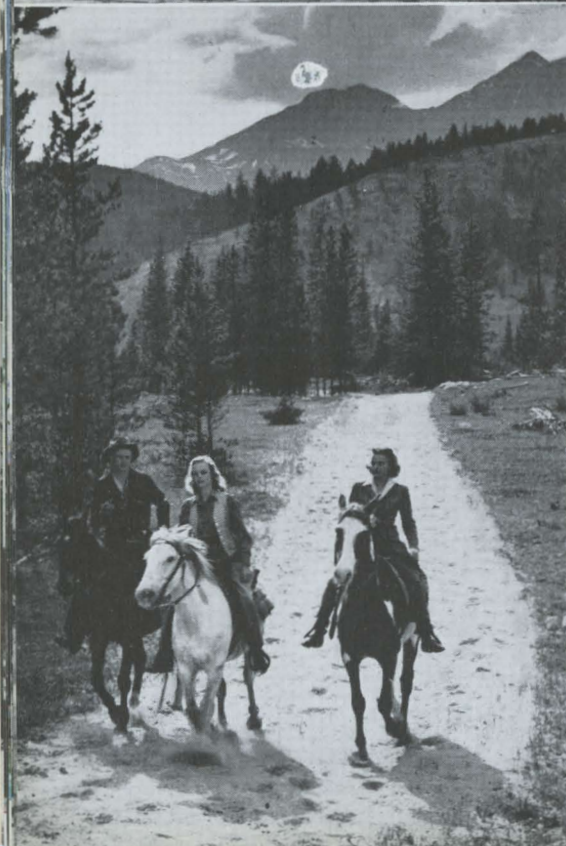
Outstanding among numerous trail trips at Jasper is the Columbia Icefield - Maligne Lake Skyline Trail, a seven day trip that begins at Camp Parker about eight miles south of the Athabaska Glacier and then cuts through the wild, back country of the Rockies for ninety miles to the Lodge. Six days are spent in the saddle and one day at the Maligne Lake Chalet. *See page 37 for additional information.*

Most of the route is at an elevation of some 6000 feet and several times the trail crosses the ridges of high passes at an elevation of nearly 9000 feet. A number of camps have been established along the route at points approximately 15 miles apart so that no day's ride is too arduous.

Much of the trail lies above timber line, in wide alpine meadows where many varieties of flowers bloom in great profusion. In Nigel, Jonas and Poboktan Passes, the trail climbs slowly to the high crests which mark the dividing line between the

Through the passes and along the skyline, sturdy and sure-footed mountain ponies carry the vacationist to joys and adventure. (Below) A hot meal is cooked and eaten on the trail.

14





southern and northern slopes, and from these skylines vast panoramas are unfolded to the eye.

The final day's ride carries one across the knife-like ridge of a shoulder of Mount Tekarra from which it is possible to see nearly 100 miles in three directions, and finally to the top of Signal Mountain at whose feet is spread the wide expanse of the lower Athabaska Valley.

Among the short saddle trips, the Jasper Park Lodge Sawdust Trail, 12 miles in length, encircling the Lodge area, is the most popular. It follows along the Athabaska River, through pine and alder groves and up over a shoulder of Old Fort Point to gain a marvellous panoramic view of the broad valley, the golf course and the surrounding mountains. The trail is broad enough for three riders to ride abreast; rocks and roots have been removed over the entire distance, and a portion of the trail has been covered with a special sawdust coating which assures a dustless and pleasant ride. Excellent saddle horses are available, and a choice of English or Western saddle. "Breakfast rides" and trail picnics include a hot meal cooked and eaten on the trail.



Apart from the Columbia Icefield Highway, which is presented in detail on pages 18 to 21, there are a number of attractive motor routes in Jasper National Park. These roads have an approximate length of 200 miles within the park proper and several extend beyond it.

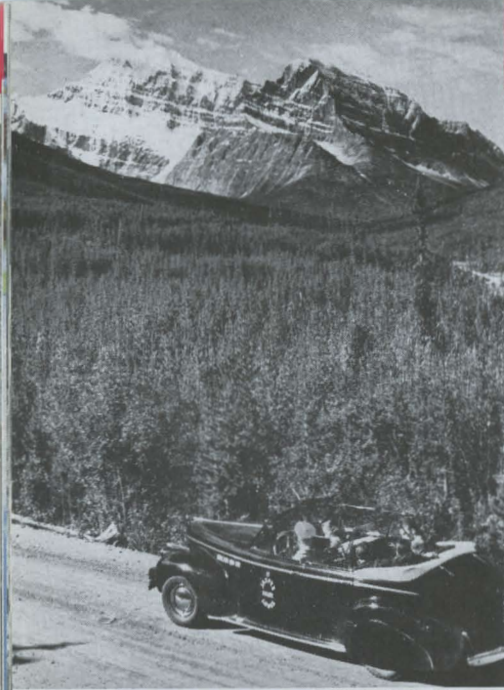
Deservedly popular is the drive to Mount Edith Cavell. Starting at the Lodge, this road rises several thousand feet in its length of twenty miles to the foot of the glacier which clings to the breast of the peak. Four rivers, the Athabaska, Miette, Astoria and Portal Creek are crossed during the trip. The views up the Whirlpool River Valley and both up and down the Athabaska Valley are particularly fine.

The drive to Punch Bowl Falls and Miette Hot Springs is another favorite. This highway hugs the Athabaska River most of the way down the valley, following a route that is important historically and which provides continuous views of large numbers of striking peaks. It offers, also, probably the best animal pictures to be had on any motor drive.

An interesting drive from the Lodge is that known as "General Drive" to Maligne Canyon, thence to the foot of Pyramid Mountain, and through Jasper town on the return.

16

Motoring in the Park discloses regions of impressive beauty.





Natural Color Photograph

This impressive view of the vast ice cap seen from the Columbia Icefield Drive along the Sunwapta River, north of the Columbia Icefield Chalet, is one of the many breath-taking sights enroute from Jasper Park Lodge.

COLUMBIA ICEFIELD



The Columbia Icefield, one of the most stupendous sights of the world, is the largest accessible glacial deposit on the continent south of the Arctic. It strews itself in splendid disarray over 110 square miles of mountain area, and from its breast bounteous life pours forth to give being to streams which, choosing three separate pathways, nurture three great rivers, each flowing to a separate sea.

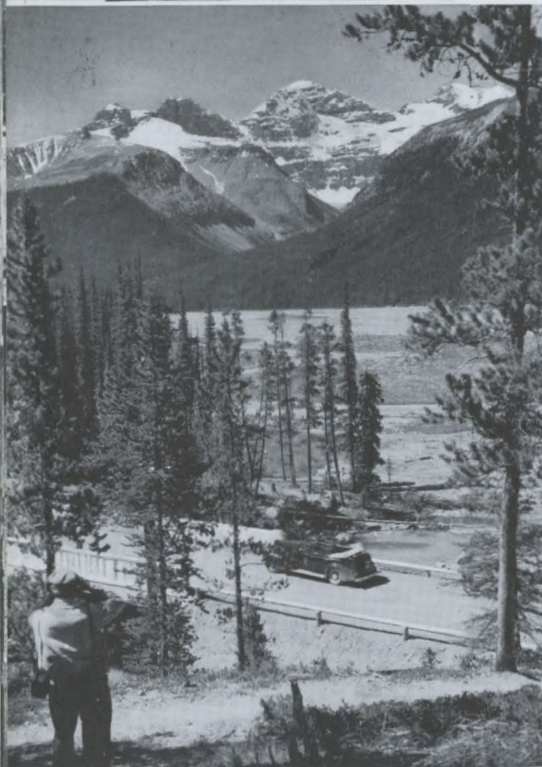
To know the full grandeur of this Icefield region one must take time to explore its higher areas, traversing it afoot or by horse, but breath-taking close-up views are obtained in ease and comfort from the Columbia Icefield Highway en route from Jasper Park Lodge.

It is wild and gorgeous country this new motor road traverses from Jasper. No highway anywhere affords such an overwhelming burst of grandeur as does this, as, 70 miles south of Jasper, it swings past the Athabaska, Snow Dome, Kitchener and other glaciers, whose long hoary fingers hold the mountain fast within their frigid grip. It is a truly astonishing sight.

The route of this highway begins in tranquility. Leaving the Lodge it follows the Mount Edith Cavell road a little way and then bends gently downward through an avenue in the forest to the centre of the valley where the wedding of the waters of the Athabaska and Whirlpool Rivers takes place.

18

(Top) An ice-bridge on Athabaska Glacier.
(Centre) Motoring among peaks and pines.
(Bottom) Columbia Icefield Chalet with Snow Dome in background.





The Saskatchewan Glacier, largest of the ice tongues in Columbia Icefield.

It follows, for a distance, up the Whirlpool, then crosses the height of land to join the Athabaska again. Here is sensed, for the first time, the turmoil of Nature that is to come, for at this point the Athabaska, in one mad turbulent leap, hurls itself a hundred feet or more into a chasm. Continuing, deep quiet woods enfold the road again until it comes upon the Sunwapta River where its waters leap into space even more madly than those of the Athabaska.

From there the road climbs gradually to timberline. Following the Sunwapta to its source, the highway enters a vast amphitheatre hemmed by giant peaks, Diadem and Woolley, both over 11,000

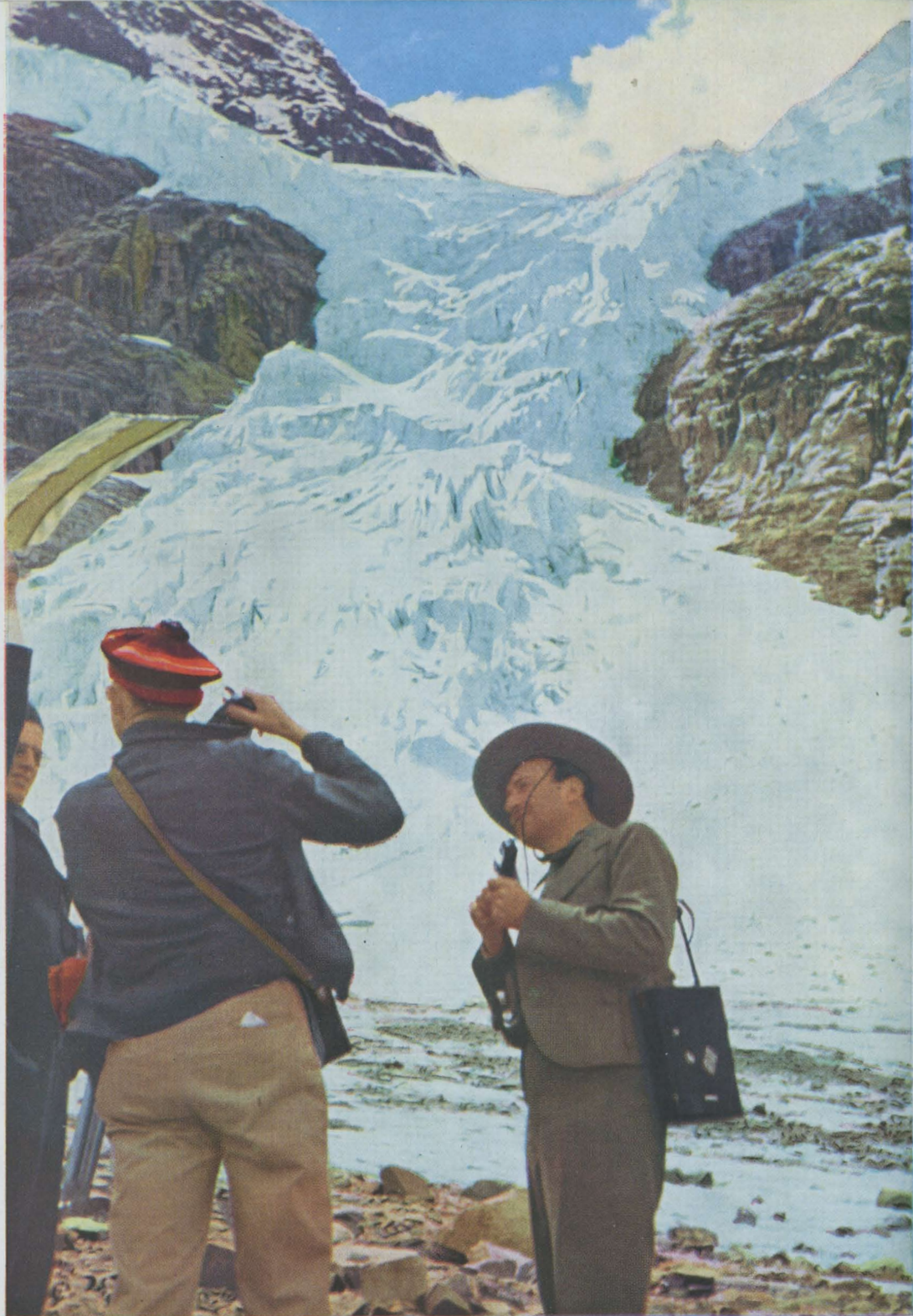
feet, Mount Stutfield, 11,320 feet, and Mount Kitchener, 11,500 feet, whose walls rise sheer to its lofty crest,—sky-shattering peaks whose gleaming crests provide a promise of the beauty that is to come.

Out of this great bowl there seems to be no escape for the road. Its way appears to be blocked by an impenetrable wall of rock but it eludes this barrier by switch-backing through the forest and emerges to present in all its startling reality the incredible pageantry of the Columbia Icefield.

Where, before, isolated ice caps were to be seen upon the mountains, now gigantic glaciers invade the valley, sweep up the slopes and, in an

The great Columbia Icefield region marks the culmination of the snow and ice deposits of the Rockies.





Natural Color Photograph.

Glacier shots are tricky; to get their full brilliance, one must be sure of his aperture and timing, and guard against reflected light. This is particularly important at the Angel Glacier on Mount Edith Cavell.



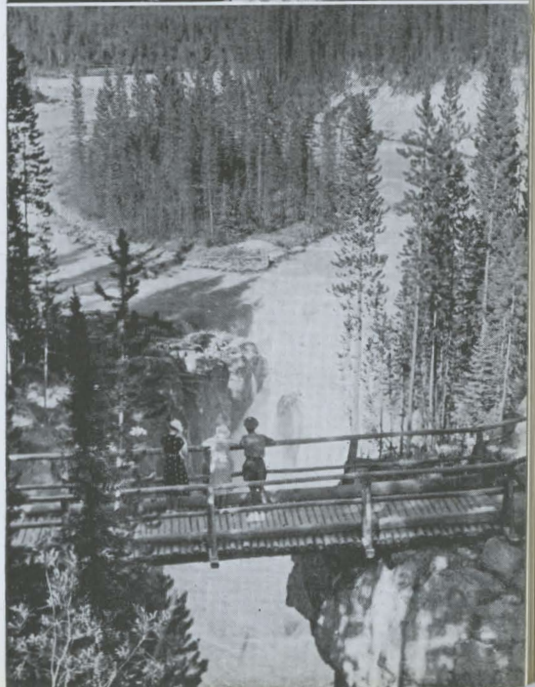
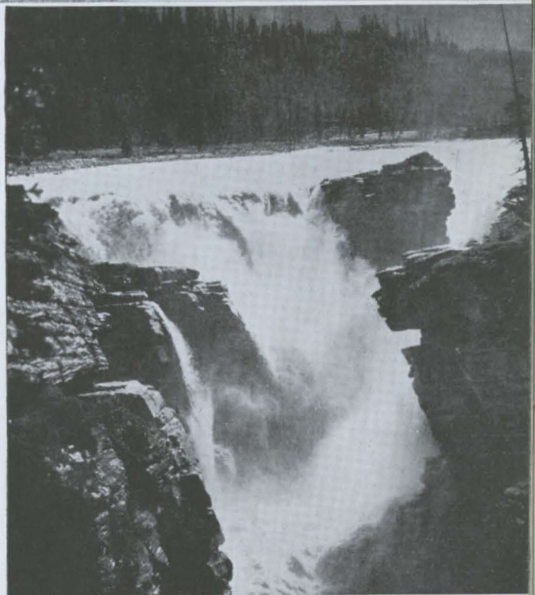
ecstasy of triumph, plant their gleaming standards on the crests. It is a sight which no one who has seen it will forget. To the right, a sheer precipice of ice, hundreds of feet thick, covers the whole top of Snow Dome. Nearby, a river of ice is draped like a silver cape over the shoulders of Mount Kitchener. Everywhere the eye looks, gleaming peaks pierce the sky.

But it is ahead that the full glory of this matchless view is unfolded. There facing the new Columbia Icefield Chalet stands Mount Athabaska. From its peak to its base it is covered with a tremendous glittering glacier so tremendous in its scope that it is breathtaking. From the far reaches of the great Columbia Icefield this glacier stems, sweeping across the crest of the mountain, surging like breakers against its slopes, then forming itself into a huge, solid mass to advance in a wide, sweeping curve into the Valley.

Five miles beyond the Athabaska Glacier the road crosses the southern boundary of Jasper National Park and continues to Lake Louise, a distance of 71 miles. Thus the Columbia Icefield Drive may be enjoyed as a motor tour from Jasper Park Lodge, or, as indicated on page 46, it may be incorporated in a round trip rail and motor tour of Jasper and Banff National Parks.

(See page 34 for additional information)

(Top) Snow Dome Glacier.
(Centre) Athabaska Falls.
(Bottom) Sunwapta Falls.





Jasper Park offers an almost bewildering choice of objectives to the Alpine climber.

Over seventy per cent of the highest peaks in the Canadian Rockies are found either within the boundaries of the Park or can be reached with Jasper as a starting point. Practically every form of rock and ice work is available, and of sufficient difficulty to test the most experienced. However, the great attraction to many climbers is the opportunity the Park affords for first ascents.

For many years, even prior to the time when it was set aside as a national playground, the peerless possibilities of Jasper for mountain climbers have been recognized and most of the world's outstanding alpinists have, at one time or another, visited the Park. In some instances they have come as individuals and in others as groups and the effect of their achievements is noticeable in the nomenclature of the area.

However, it will be many years before the mountain climbing possibilities of Jasper have been explored fully. While hundreds of peaks have been scaled there are many hundreds upon whose crests no man has yet set foot and while many of the mountains are named, there are still many which are not. Particularly appealing to alpinists are those sections of Jasper which may be described roughly as the Columbia Icefield, the Whirlpool River sector, the Tonquin Valley and the Maligne Lake district. All of these areas have something different to offer the mountaineer.

Providing sufficient notice is given, experienced guides will be obtained for parties desirous of mountain climbing.

Alpinists find in Jasper National Park unscaled peaks to tax their skill and courage.

Jasper National Park is also a game reservation and its friendly boundaries provide a haven for many types of wild animals, from perky little rock rabbits to caribou, from industrious beaver to foraging grizzlies; from soft-eyed deer to wary mountain goat. In between can be included marmots, big horn sheep, coyotes, moose, elk, black and brown bears, squirrels, chipmunks, and the smaller fur bearers: the martin, otter, fisher and mink.

The natural overflow of wild life into the unprotected areas beyond the boundaries of the park make Jasper one of the most popular jumping-off points for big game hunters.

Here, too, is a wide range of bird life. The smaller birds include the robin, the humming bird, whiskey-jacks, thrushes, sparrows, warblers. High in the blue, the eagle and osprey soar disdainfully, making their nests in the tallest pines or most remote rock ledges.

To every lover of beauty, wild flowers are a constant source of delight and their profusion, color and fragrance add the last touch of loveliness to many an alpine scene. Nature's loveliest gardens are found in the higher meadows, lying almost at timber line. Among the many varieties are the giant Dog Tooth violets, mountain Anemones and their cousins, the Dryas family, the Larkspur and the Lupin, while everywhere the eyes of the Forget-me-not look up at you.



Mule Deer, Mountain Goat, Moose, Bear, Caribou, Mountain Sheep. Infinite numbers of flowers are everywhere.

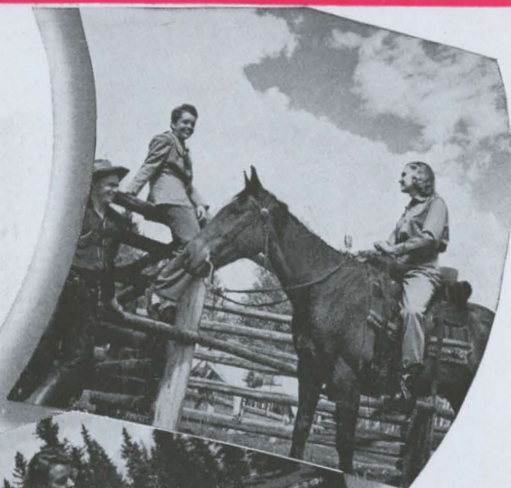


CAMERA CAPTURES

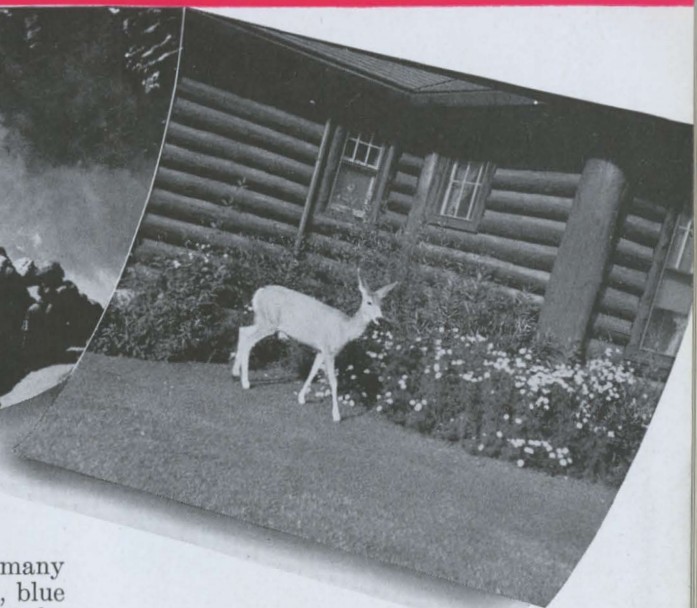
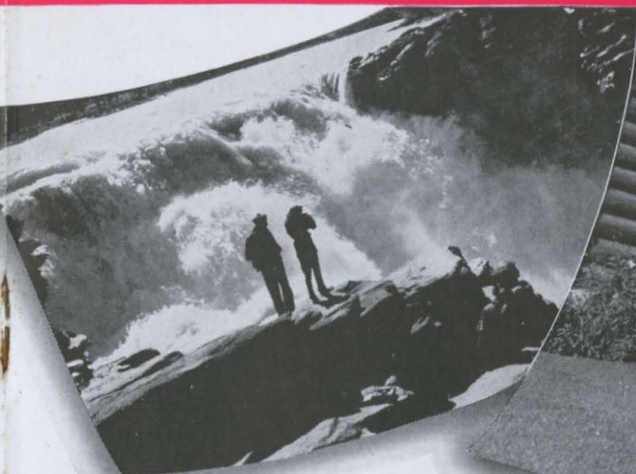
To camera fans — and their number is legion, Jasper National Park offers opportunities unexcelled on the Continent. The clear atmosphere of the Canadian Rockies, and the brilliant lighting make it possible to secure photographic gems in black and white, and natural color, that serve as the finest mementos of a visit to this unmatched scenic region.

For memorable shots one need not go beyond the broad valley of the Athabaska, rimmed by friendly peaks which vary in color from the wolf grey of the Colin Range to the rich reds and browns of Pyramid Mountain. Lac Beauvert "the beautiful green lake," under a brilliant sun and a cloud-flecked sky shows all the colors of the rainbow as it reflects the perfect form of distant Mount Edith Cavell. Brilliant flowers, green lawns and majestic pines serve as subjects, or background for shy deer or playful bears.

Motor tours in the Park afford countless views which are equalled only by breath-taking closeup and distant shots from skyline rides. Maligne Lake and Tonquin Valley would fill an album. One vantage point on the Columbia Icefield drive yielded eleven distinctive subjects from one position. The refracted light of glacier shots is a particular challenge to amateur photographers. The lovely Angel Glacier on Cavell, with its out-



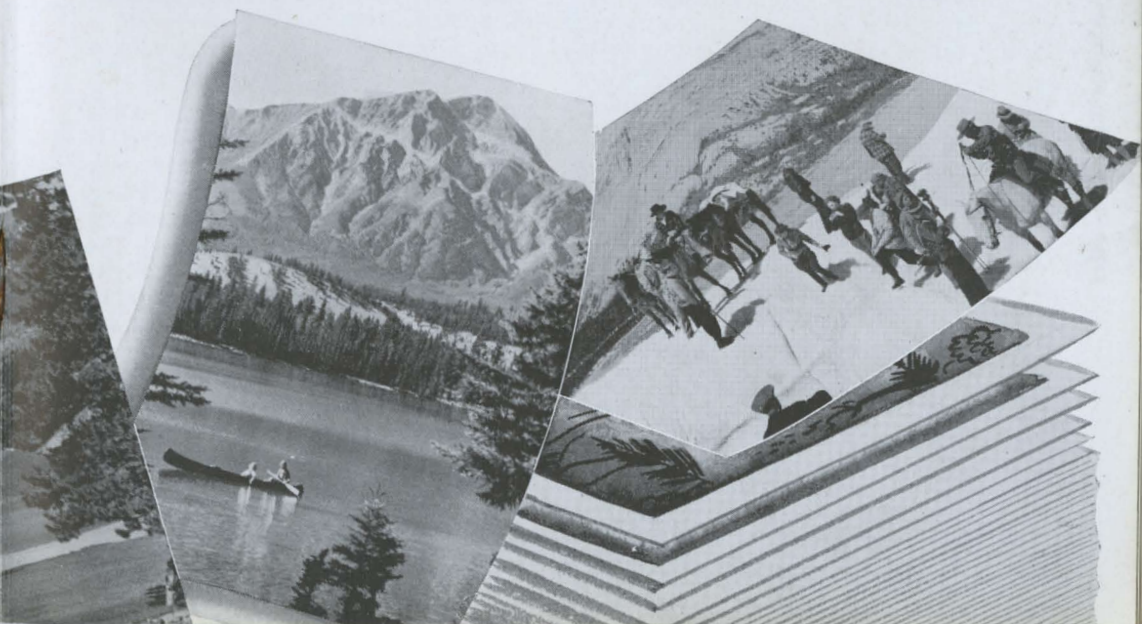
JASPER'S CHARM



stretched wings has yielded many remarkable photographic studies, blue sky and ice against the shoulder of the vast peak. The shimmering green and irregular formations of the Columbia Icefield, with tiny figures dwarfed by its mighty expanse make another subject that offers endless opportunities. Wild flowers, Indian Paintbrush, Columbines . . . moose, deer, mountain sheep and goat . . . camp fires . . . with such an endless variety of subjects your album expands, as you bring back in film a record of your Jasper vacation.

In 1941 Ivan Dmitri, famed artist-photographer, conducted a photographic tour to Jasper which members

voted their finest vacation ever. Two similar tours have been arranged in 1942; sponsored by Popular Photography, they will be conducted by Ivan Dmitri, who will give field instruction in various phases of composition and exposure and conduct evening round table discussions. Tours will be at Jasper Park Lodge from June 23rd to June 30th, and from June 30th to July 7th. Particulars of schedules and all-inclusive rates may be obtained from any Canadian National Passenger Representative.



Gay Winter Sport extended into Spring and early Summer.



Skiing areas in Jasper National Park are becoming well known throughout the Continent and such names as Tonquin Valley, Maligne Lake, Whistlers, Columbia Icefield, Mount Edith Cavell, Watch Tower Valley, Big Shovel Pass have become established. Jasper is beginning to enjoy a fine reputation as a spring and early summer skiing area as the warmth of the summer sun makes the sport all the more enjoyable.

Accessibility is the keynote of Jasper's best-known winter and spring skiing area. Skiers arriving in the picturesque alpine village aboard Canadian National trains from either East or West, ride by automobile, snowmobile or horse drawn sleigh right into the Maligne Lake area and very close to the Chalet at Watch Tower Valley. Other skiing areas are reached just as easily. In all these areas excellent ski conditions prevail, and there are easy slopes for the beginner in addition to the longer and steeper hills for those more experienced.

Skiing trips from Jasper can easily be arranged. Experienced guides are available and full information will be obtained by any Canadian National

Representative from Major Fred Brewster, Jeffery Bros., or J. A. Weiss of Jasper, as these outfitters can handle ski parties of any reasonable size. Tours of from a day to three weeks will be arranged, giving the visitors a magnificent view of the spectacular country.

At the alpine town of Jasper itself is some of the finest skiing of the Rockies. Only a few minutes from the railway, reached either by ski trail or by motor car, the Jasper Ski Club has a very interesting ski run on the north slope of The Whistlers, some 3,000 yards in length, and with a vertical drop of approximately 2,700 feet. Whistlers, too, is the gateway to the famous Tonquin Valley where the Alpine Club of Canada meets for annual ski camps. Here, too, is the sweep of the Fraser Glacier, a mile-wide snowfield, dropping 3,500 feet in more than three miles. In this area are undulating alplands of the Eremite and the powder snow of Surprise Point and Para Glacier. Right at the foot of the Para and Fraser the Alpine Club maintains a winter headquarters, while at Amethyst Lake, under the majestic Ramparts and Surprise Peak, is the Brewster Chalet.

Popular also during the winter and spring months, the slopes of Mount Edith Cavell entertain a host of skiers until June, as fine summer snow is available only a half-hour's easy walk from the end of the highway leading to the impressive moraine formations at the toe of Glacier of the Angel. At the Columbia Icefield skiing usually is excellent on the lower slopes, only 15 minutes from the end of the highway, until June. During July there is good skiing in the huge snowbasins of Mount Athabaska and the upper Icefield where Snow Dome, Kitchener, Columbia and other of the massive peaks tower over snowfields miles in extent.

MOUNT ROBSON PARK

This beautiful and outstanding scenic area and Provincial Park in the heart of the Canadian Rockies contains over 800 square miles of awe-inspiring grandeur. Directly adjoining America's largest mountain playground, Jasper National Park, it is easily reached by Canadian National main line Transcontinental Service.

Dominating this British Columbia forest reserve is Mount Robson, the King of the Rockies, rearing its imponderable mass 12,972 feet above sea level. Enroute to it from Mount Robson Station every mile of the winding trail opens up new vistas or brings within the range of vision new glories in hanging glaciers and silver streams tumbling from dizzy heights and more distant peaks.

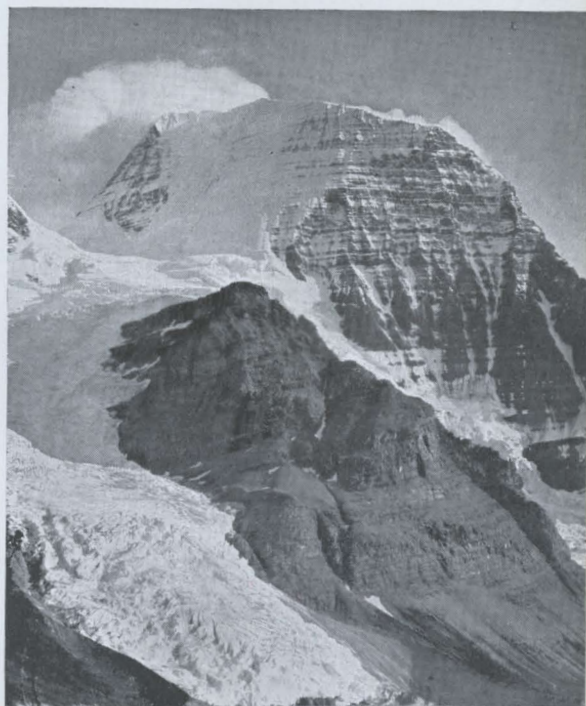
The Robson and Tumbling Glaciers, and the icefilled basin from which they flow, extend back from the pass summit for some nine miles along the eastern flank of the mountain and are known as the Robson Cirque. The wonderful creations of ice and snow there accumulated, justly constitute it one of the wonders of the Canadian Rockies, and its fame has gone far and wide.

Hargreaves Bros. maintain Bungalow camps at Mount Robson station and Berg Lake, at the base of the mountain, as well as a complete outfit of sure-footed mountain horses and capable guides to handle visitors over miles of established trails into beautiful scenic areas.

Mount Robson Dude Ranch is located within a few hundred yards of Mount Robson and Emperor, B.C. stations. At this Ranch the visitor may obtain, at reasonable rates, real home-like and modern accommodation. If desired a most restful entire vacation could be spent here or, for the more active, riding, hiking and climbing can be arranged. Should the visitor decide to ride the trails, this is the

starting point for a variety of saddle trips to scenic areas. Outstanding among these trips is the one to Berg Lake Bungalow Camp, opposite Tumbling Glacier, a distance of approximately 16 miles from Mount Robson station.

Detailed information in regard to Mount Robson district may be secured, reservations made, and all arrangements completed at the transportation desk, Jasper Park Lodge.



(Top) View from north showing the Tumbling Glacier
(Below) Berg Lake Camp.



Natural Color Photograph.

The Ramparts of the Tonquin Valley. Nearby Amethyst Lake and the upper waters of the Astoria Creek are stocked with Rainbow trout and offer excellent sport for the angler. Tonquin Valley is reached by motor car to View Point, 16 miles from Jasper on the Cavell highway, thence 10 miles by saddle horse.

ACCOMMODATIONS IN JASPER NATIONAL PARK

JASPER NATIONAL PARK offers accommodations to suit every purse and every taste. There are several all-year hotels in Jasper; the luxurious Jasper Park Lodge four miles distant, on Lac Beauvert, and a number of chalets, camps and auto bungalow cabins.

Canada Railway News operate a dining room and lunch counter service at Jasper Station. There are also other cafes in Jasper serving meals at reasonable rates.

ASTORIA HOTEL, Jasper

Open throughout the year. Rates: European Plan, from \$2.00 per day, single, and up; from \$3.00 per day, double, and up. Rooms with and without bath. Lunch counter and dining room service.

ATHABASCA HOTEL, Jasper

Open throughout the year. Rooms with and without bath. Rates: European Plan, from \$2.50 per day, single, and up; from \$4.00 per day, double, and up. Dining Room Service.

COLUMBIA ICEFIELD CHALET

Open June 15 to Sept. 30. Rates: American Plan with bath, from \$7.50 per day, single; from \$12.50 per day, double. Table d'hote meals at reasonable prices. Located at the foot of the Athabaska Glacier, facing a marvellous panorama of mountains and glaciers, this is an ideal stopover point on the Columbia Icefield Highway for foot or horse trips over the Glacier.

JASPER PARK LODGE (American Plan)

See page 31 for rates and accommodation.

KIEFER'S KOSY KABINS

One and a half miles from Jasper on the Columbia Icefield highway. Accommodation 40 persons. Open May 15 to Oct. 1. Rates on application.

MALIGNE LAKE CHALET

Thirty-two miles from Jasper, at river outlet on lake shore. Open June 15 to Sept. 15. Rates: American Plan, 4 room cabin, \$8.00 per day; \$49.00 per week; heated canvas houses, \$6.00 per day; \$35.00 per week.

MALIGNE LAKE TOURIST CAMP

Thirty-two miles from Jasper. Summer season only. Tent cabins. \$4.00 per day, American plan.

MEDICINE LAKE CHALET

Twenty-two miles from Jasper. Open June 15 to Sept. 15. Rates: American Plan, \$5.00 per day; \$28.00 per week.

PINE BUNGALOW CABINS

One mile east of Jasper. Open May 1 to Oct. 1. Accommodation for 200 persons. Rates: \$3.00 per person and up, with and without housekeeping facilities.

PYRAMID HOTEL, Jasper

Open throughout the year. Rooms without bath. Rates: European Plan, \$1.00 and up.

ROCKY MOUNTAIN BUNGALOW CAMPS (Beckers)

Four miles from Jasper on the Columbia Icefield highway. Open May 1 to Oct. 1. Accommodation for 100 persons. Rates: Spring and fall, 2 persons, \$4.00 and \$5.00 per day; 4 persons, \$6.00 per day; July and August, \$7.50 to \$15.00.

ROCKY MOUNTAIN BUNGALOW CAMPS (Beckers)

At Miette Hot Springs. Open June 15 to Sept. 15. Accommodation for 50 persons. Rates: For 2 persons, \$5.00 per day and \$1.25 for each additional person. Dining room service.

TONQUIN VALLEY CHALET

On the shore of Amethyst Lake, 20 miles from Jasper by motor-car and ten miles by saddle-horse. Open July 1 to Aug. 31. Rates: American Plan, \$6.00 per day; \$35.00 per week.

Y.M.C.A. CAMP, Lake Edith

Five miles from Jasper Station. Transfer service available from station to camp. Open July and August. Rates: Chalet rooms, \$3.50 per day per person; tent cabins, \$3.00 per day per person, American plan. Accommodation for 90 persons.

NOTE:—The Canadian National Railways in furnishing the above list of rates and other information, assumes no responsibility as to its accuracy.

SCENIC FRESH AIR MOTOR DRIVE

Through-passengers on the trans-continental trains who are unable to stop over at Jasper can visit Jasper Park Lodge during the lay-over of trains at Jasper Station. This, besides allowing them some fresh mountain air, affords them an opportunity of seeing this world-famous mountain resort. Motor equipment, owned and operated by Canadian

National Railways, and marked "Jasper Park Lodge" will be at the station. Conductors or any other train employee will make seat reservations. A charge of 50c. per person is made for the round trip.

Trains will not depart from Jasper Station until all motor equipment marked "Jasper Park Lodge" returns from this drive.

JASPER PARK LODGE — *General Information*

TIME—Jasper Park Lodge follows Mountain Standard Time.

Altitude—3,470 feet.

Baggage—*Incoming Baggage*: In order to avoid delay, baggage should be checked from starting point direct to Jasper Park Lodge. Guests are requested to present their baggage checks to the Lodge porter immediately on arrival at Jasper Station.

Outgoing Baggage: Guests who wish to check baggage should present rail tickets to the Head Porter two hours before the departure of their trains. Those who have only hand baggage to check should secure tags from the Head Porter.

Banks—The Imperial Bank of Canada maintains a branch office in Jasper.

Barber Shop, Shoe Shine Parlour, and Beauty Parlour are located in the Main Building.

Breakfast Rides—Organized and led by the Social Hostess and held each week throughout the summer season.

At 7:30 a.m. the riders meet at the Lodge mounting square, ride the trails chosen for that day, and reach the meeting-place about an hour and a half later. There, on some beautiful mountain slope, a bountiful, informal breakfast, tastily prepared, is served piping hot from an outdoor fireplace.

Camera Supplies—See "Film Developing Service" and "Novelty Shop."

Church Services—Church services for various denominations (Anglican, Roman Catholic, United Church), are held every Sunday in Jasper.

Customs—A Canadian Customs Officer is located at Jasper Park Lodge to facilitate the clearing of baggage of visitors from the United States.

Dancing—The Lodge orchestra provides dinner and evening concerts, also dance music from 9 to 12 o'clock every night, except Sunday.

Electric Current—A.C. 110-115 volts, 60 cycles, single phase.

Express Service—Canadian National Express, represented at Jasper, provides express service for shipments to and from all points in Canada, United States and Great Britain.

Film Developing Service—Films left at the Novelty Shop before 9:00 a.m. will be returned the same day at 6:30 p.m.

Guides for Mountain Climbing—Provided sufficient notice is given, experienced guides can be obtained for parties desirous of mountain climbing.

Laundry—One-day service.

Library—A Lending Library is operated in connection with the Specialty Shop.

Masseur—A modified Therapeutic Department, with a graduate Therapist in charge, is operated in connection with the Lodge.

Medical Service—The services of a physician are available at all times, while a graduate nurse is in constant attendance.

Money Orders—Money Orders are sold at the Front Office.

Motion Pictures—A motion picture entertainment is given in the ballroom from 8 to 9 o'clock every evening, except Sunday.

Novelty Shop—A complete line of souvenirs, post cards, camera supplies, coloured glasses, fishing tackle, etc. can be purchased at the Novelty Shop, operated in connection with the CIGAR and NEWS STAND. See also "Specialty Shop".

Passenger Representative—A Canadian National Railways General Agent is located at the Lodge. He will assist guests in all matters pertaining to tickets, train and boat reservations, etc.

Picnic Parties—Picnic parties can arrange for basket lunches. See also "Breakfast Rides."

Royal Mail Service—Daily Royal Mail service is provided to and from Jasper Park Lodge. Mail should be addressed in care of Jasper Park Lodge Post Office, Alberta. Guests are requested to leave their forwarding address before departure.

Safety Deposit Boxes—Safety Deposit Boxes for the safe keeping of money and valuables are available to guests; apply at the Front Office. We cannot accept responsibility for money or articles not deposited therein.

Social Hostess—A Social Hostess is on the staff throughout the entire season.

Specialty Shop—An up-to-date Specialty Shop, located in the Main Building, carries a full line of imported woollen goods, hand-woven articles, blankets, china, costume jewellery, ladies' sportswear, and an exclusive line of gentlemen's sportswear, sweaters, socks, ties, etc. See also "Novelty Shop".

Telegrams—Canadian National Telegrams, connecting with the Western Union Telegraph Co., maintains an office at the Lodge. A complete, world-wide telegraph and cable service as well as a telegraphic money order service is available. From the leading exchanges of the world come regularly the latest market reports on stocks and bonds.

Telephones—Long Distance Telephone connections can be made direct from all bedrooms.

U. S. Funds are accepted in payment of Hotel Accounts at the rate of exchange set by the Foreign Exchange Control Board.

Valet—Ladies' and gentlemen's valet service.

Jasper Park Lodge

OPEN JUNE 15th TO
SEPTEMBER 15th, 1942

RATES—AMERICAN PLAN (Including meals)

Rooms with detached bath

Though without private bath, each of these rooms has hot and cold running water; public baths and toilets are centrally located in each cabin.

	Type	Per Day		
		SINGLE	DOUBLE	
16-room cabins (single rooms only)	J	\$ 9.00		Single bed
23-room cabin—(single rooms only)	P	9.00		" "
10-room cabins—back rooms	E	9.00	16.00	Double bed
4-room cabins	D	10.00	17.00	Twin beds

Rooms with private tub bath

16-room cabins (single rooms only)	J	11.00		Single bed
10-room cabins	G	13.00	20.00	Twin beds
10-room cabins	H	14.00	22.00	" "
4-room cabins	C	16.00	24.00	" "

Rooms with private shower bath

4-room cabins	M	14.00	22.00	" "
4-room cabins	N	14.00	22.00	" "

Rooms with private combination tub and shower bath

4-room cabin	F	18.00	25.00	" "
4-room cabins	L	18.00	25.00	" "
8-room cabin	R	19.00	26.00	" "

Private sitting-rooms in Type L and Type R cabins.....\$5.00 per day.

If the exclusive use of a 4-room cabin is desired by a party, the minimum charge will not be less than the regular rate for six adults.

Rooms with connecting bath

Main Building—				
2 persons in 2 rooms with connecting tub bath		\$28.00	} 8 rooms have double bed	
3 " 2 " " " " " " "		36.00		
4 " 2 " " " " " " "		44.00		
Type S cabins—				
<i>(Connecting rooms—one room has tub bath and the other has shower bath)</i>				
2 persons in 2 rooms		28.00	} Twin beds	
3 " 2 " " " " " " "		36.00		
4 " 2 " " " " " " "		44.00		
Type E cabins—				
2 persons in 2 front rooms with connecting tub bath		24.00	} Twin beds	
3 " " " " " " " " " "		31.00		
4 " " " " " " " " " "		38.00		

Rooms in the Main Building and in Type S cabins, as well as front rooms in Type E cabins, are sold only en-suite.

Suites and housekeeping cabins

One-suite cabins with tub bath—Type A				
One or two persons		34.00	} Twin beds	
Three persons		42.00		
Four persons		50.00		
Two-suite cabins with tub bath—Type B				
Rates for each half of cabin				
One or two persons		34.00	} Twin beds	
Three persons		42.00		
Four persons		50.00		
One to four persons occupying entire Type B cabin		68.00		
Five " " " " " " " "		76.00		
Six " " " " " " " "		84.00		
Seven " " " " " " " "		92.00		
Eight " " " " " " " "		100.00		
AA Cabin				
One to four persons (minimum)		80.00	} Bed equipment will be arranged to suit occupants.	
For fifth and sixth persons, each		9.00		
Point Cabin				
One to four persons (minimum)		100.00	} Bed equipment will be arranged to suit occupants.	
For each person from 5 to 8 inclusive		9.00		
Servants—each		6.00		
Outlook Cabin—				
One to four persons (minimum)		125.00		
For each person from 5 to 8 inclusive		9.00		
Servants—each		6.00		

Half rate for children under seven years, unless they occupy a separate room.

Discounts: For a stay of one week or longer, 5% on room and meals.—For a stay of two weeks or longer, 10% on room and meals.

Rates for Single Meals:—Breakfast, \$1.25. Luncheon, \$1.25. Dinner, \$1.50.

Afternoon Tea is served daily from 4 to 5 p.m.—.50 per person.

Bus Fare:—Between station and Lodge (4 miles)—.50 per person each way. This includes the free transfer of hand baggage; it does not include the transfer of baggage which has been checked on rail transportation, charges for which are given below under "Checked Baggage."

Checked Baggage: (Between station and Lodge) Grips— .30 per piece each way; Trunks— .50 per piece each way.



Natural Color Photograph.

Encircled by friendly peaks which rim the broad Athabaska Valley, and set amid colorful flowers and velvet lawns sloping down to the shore of Lac Beauvert, Jasper Park Lodge has the appearance of a lovely alpine village. Paved walks connect the individual bungalows and lead to the Main Lodge.

Details of Activities IN JASPER NATIONAL PARK AND AT JASPER PARK LODGE

Horse-back riding, mountain climbing, hiking, motoring, golfing, tennis, boating, canoeing, fishing, swimming, dancing, motion pictures, and table tennis are among the recreational attractions. Details of all activities are described in the following pages. Further information may be obtained at either the Motor Transportation Desk or the Trail Riders' Desk in the Main Building, Jasper Park Lodge.

SWIMMING POOL

With guests of the Lodge the swimming pool ranks as one of the most popular attractions. Constantly changing, crystal-clear glacial water, filtered and heated before entering the pool, adds to the pleasure of a dip and ensures sanitary freshness. In attendance is a competent swimming instructor, with whom arrangements can be made to take lessons in swimming and diving. The use of the pool is given free to guests of the Lodge, but a charge

of 25c each is made for the rental of bathing suits. Dressing rooms are equipped with showers.

BOATING

Paddling on Lac Beauvert is a favoured evening enjoyment. Boats and canoes are available for rent at 50 cents per hour.

TENNIS

Four hard-surfaced courts are available to guests free of charge. Guests should bring

their own racquets. Tennis balls are sold at the Novelty Shop.

TABLE TENNIS

Sets are available in the Main Building, in the Golf Club House, and at the Swimming Pool.

GOLF

Arrangements for golfing on the Jasper Park Lodge Golf Course can be made at the Golf Club House, situated 300 yards from the Main Building. A Professional of the highest standing as player, instructor, and club maker is in attendance. Equipment can be either purchased or rented.

RATES FOR GOLF	Per Person	Family Rates	
		First Person	Others (each)
18 holes.....	\$ 2.00	\$ 2.00	\$ 2.00
Per day.....	3.00	3.00	1.50
Per week.....	12.00	12.00	6.00
Per month.....	45.00	45.00	22.50
Per season.....	75.00	75.00	37.50

Caddie Fees

Class A—18 holes.....	.75
Class B—18 holes.....	.50

GOLF WEEK

September 6th to 12th, 1942.

For special All-inclusive Rates from all points in Canada and the United States, see

folder dealing with Seventeenth Annual Totem Pole Tournament.

FISHING

Speckled trout fishing waters are found at Maligne Lake and Maligne River, as well as at Medicine Lake and Beaver Lake, where fighting Eastern Brook trout, artificially propagated, await the angler.

Chalets, boats, and boatmen, are available. Arrangements for the journey to these lakes and chalets by automobile, motor boat, and saddle-horse, can be made at the Transportation Desk. Jacques Lake, situated between the Maligne and Rocky Rivers, offers Dolly Varden trout; Beaver Dam Creek (four miles from the Lodge), Wabasso Lakes and Buffalo Prairie (ten miles distant), and Hardisty Creek at Athabaska Falls (twenty-one miles away), are stocked with rainbow trout.

Amethyst Lakes in the Tonquin Valley, abundantly supplied with Rainbow and Kamloops trout, offer excellent sport.

LICENCE REQUIRED FOR FISHING

A licence is required to fish the waters of Jasper National Park. This can be obtained at the Motor Transportation Desk or from the Park Wardens at a cost of \$2.25 per person.

Anglers, while fishing, must have Licences in their possession.

AUTOMOBILE SIGHTSEEING DRIVES AND OTHER MOTOR SERVICES

Arrangements can be made at the Motor Transportation Desk in the Main Building of Jasper Park Lodge for all scheduled and special motor trips.

The automotive equipment at Jasper Park Lodge consists of luxurious passenger automobiles and buses. The chauffeurs, besides being experienced drivers, are well versed in the history and lore of the Park. They thus make thoroughly competent guides, whose knowledge and experience add much to the journeys along these historic trails.

Guests holding drive coupons are requested to present them at the Motor Transportation Desk as soon as possible after arrival in

order to facilitate their trip arrangements.

Private touring cars will be operated on any regular drive (except No. 6, Columbia Icefield, for which a minimum of 5 full fares is required), when cars are available without interrupting or interfering with regular services. Rates are based on a premium of two extra fares, plus a seat fare for each actual passenger, with a minimum of two passengers. For example:

1 or 2 passengers pay 4 fares
3 " " " 5 "
4 " " " 6 "

Half fare for children under twelve years on all motor drives.

SIGHTSEEING MOTOR DRIVES

NOTE:—Starting point of all sightseeing motor drives—Main Entrance, Jasper Park Lodge.

Departure hours and schedules for these drives have been carefully planned to permit visitors to view without haste the scenic wonders of the Park.

No. 1: General Drive—Twenty-eight miles return. Motors leave the Lodge at 10.00 a.m. and 3.15 p.m. Time, approximately 2½ hours. Cost per person, \$3.00. This drive embraces a wide variety of valley, lake, canyon, and mountain scenery. The route, after following the Athabaska River, skirts Lakes Annette and Edith before gradually ascending the roadway to Maligne Canyon. From this vantage point the tourist stands in awe before the snow-capped grandeur of lordly mountains

and the mighty sweep of the Athabaska Valley, which loses itself in endless vistas of Alpine beauty. Maligne Canyon, a tremendous gorge descending to a depth of 188 feet, and remarkable for its potholes, is a never-ending source of wonder and amazement. On the return journey the tourist again meets the Athabaska River and crosses it to join the Main Highway to Jasper, where he gets a glimpse of "the Raven", one of the largest totem-poles in existence. Continuing along to the foot of Pyramid

Mountain and passing en route Lakes Patricia and Pyramid, the drive again runs through Jasper before terminating at the Lodge.

No. 2: Maligne Canyon—Twelve miles return. Motors leave the Lodge at 10.00 a.m. and 3.15 p.m. Time, approximately 1½ hours. Cost per person, \$2.00—This canyon, into which the Maligne River plunges through a gorge 188 feet deep, ranks among the most extraordinary in the Canadian Rockies. The route lies over a gradually ascending roadway from which the tourist obtains magnificent views of lordly mountains and charming vistas of the Athabaska Valley.

No. 3: Punch Bowl Falls—"A Twilight Drive"—Sixty miles return. Motors leave the Lodge at 7:00 p.m. Time, approximately 3 hours. Cost per person, \$3.50—The route leads over the Athabaska River, to follow the completed section of the new Inter-Provincial Highway to Punch Bowl Falls and Valley. Affording a very wide variety of mountain scenery, this trip is highly recommended as an evening drive, for after sunset, animal life frequents the numerous lakes and streams in this region, and it is usually possible to see sheep, goats, deer, bears, moose, etc. from the motor-car. Return to the Lodge in ample time for dancing, bridge, etc.

No. 4: Glacier of the Angel (Mount Edith Cavell)—Forty miles return. Motors leave the Lodge at 9:30 a.m. and 3:15 p.m. Time, approximately 3 hours. Cost per person, \$4.00—Offering excellent motoring, this drive by a course of wide-sweeping switchbacks reaches an altitude of nearly 2,000 feet above the floor of the valley and gives the tourist an ever-changing series of strikingly beautiful panoramas. The highway, terminating at the foot of the famous glacier, affords an excellent view of this vast field of living ice. Light lunches and refreshments can be obtained at the Tea Room near the foot of the Glacier.

No. 5: Miette Hot Springs and Fiddle River Canyon—Eighty miles return. Motors leave the Lodge at 9:00 a.m. Time, approximately 4 hours. Cost per person, \$6.00. The route, after skirting the shore of Lake Mildred, follows the

The Station Agent at Jasper will make arrangements for railway patrons, who are not guests of the Lodge, to be taken from the station, in motors marked "Jasper Park Lodge," on any of the scheduled drives, Nos. 1 to 6, inclusive. Regular rates will apply. A stop will be made at the Lodge.

Athabaska River, which it crosses to join the Inter-Provincial Highway, whence it extends for miles down the Athabaska Valley to Jasper Lake and beyond to Punch Bowl Falls. A short stop is made to view this unique waterfall, and then the trip continues along the rim of the Fiddle River Canyon for another eleven miles before finally reaching the famous Miette Hot Springs. At this point, hot sulphur spring water, varying in temperature from 79 to 128 degrees F., comes boiling out of the mountain side. Motors will remain long enough to permit bathing in the pool.

The Miette Hot Springs consist of three main springs, which issue from the rocks along the banks of Sulphur Creek. The springs, non-volcanic in nature, owe their heat to chemical action, caused by surface water coming into contact with certain minerals in the limestone rock formation. The combined flow of the three springs reaches a total of approximately 170,000 gallons every 24 hours.

The Swimming Pool and the Steam Baths at Miette Hot Springs are operated by the National Parks Department. The rates are:

Swimming Pool—When bathing suit and towel are supplied by the Department: adults, 35c.; children, 25c. When bathing suit and towel are supplied by bather: adults 25c.; children, 15c. Steam and Plunge Baths—50c. per person.

No. 6: Columbia Icefield (Jasper-Banff Highway)—One hundred and fifty miles return. Motors leave the Lodge at 9:00 a.m. Time, approximately 7 hours. Cost per person, \$10.00. Minimum, 5 persons. This drive follows the route of the Mount Edith Cavell Drive to a point beyond the crossing of the Astoria River, whence it continues along the valley of the Athabaska. From here the route penetrates through the very heart of the Canadian Rockies to the largest and most impressive icefield outside the Arctic Circle. With an estimated area of 110 square miles, the average elevation of this amazing icefield is between 9,000 and 10,000 feet, which, because the waters of its melting glaciers travel thousands of miles to three oceans, the Atlantic, the Pacific, and the Arctic, has been beautifully named "Mother of Rivers". **Unquestionably, this is America's Greatest Scenic Drive.**

SPECIAL MOTOR SERVICES

Medicine Lake—Beaver Lake—Lower Maligne River. Provided arrangements are made at the Motor Transportation Desk before 9:00 p.m. the evening prior to departure, anglers who wish to fish these waters can leave Jasper Park Lodge at 9:30 a.m. and leave Medicine Lake on return at 7:00 p.m. For this service a charge of \$5.00 per person, minimum two persons, will be made. Should

a party make the trip at any time other than the foregoing, an extra charge of \$5.00 for one person, and \$2.50 each for two or more persons, will be made. **If boats, guides, fishing tackle, etc. are required, notice must be given at the Motor Transportation Desk before 9:00 p.m. the evening prior to departure.**

Picnic Parties—By arrangement, special buses, when available, will be operated to picnic sites. Cost per person, \$1.00 for the round trip; minimum charge, \$10.00 per round trip.

By arrangement, touring cars, if available, can also be engaged for this service at special rates.

Trips to Jasper—In addition to the scheduled bus trips to Jasper, cars, when available, can also be obtained at the following rates:

One-way—one to three persons, \$2.00; each additional person 50c.

Round-trip—one to three persons, \$3.00; each additional person \$1.00.

Time, including shopping, not to exceed one hour for the round trip; extra waiting time will be charged for at the rate of \$3.00 per hour.

A Shopping Bus to Jasper and return operates daily (except Sunday) at 10:30 a.m. and 3:30 p.m. Cost, 50c. per person.

For motor coach service over the Columbia Icefield Highway between Jasper and Lake Louise, Banff, Calgary, etc., see page 45.

SADDLE TRIPS—TRAIL AND CAMPING TRIPS—GUIDE SERVICE

Official Outfitters—Fred Brewster's Rocky Mountain Camps Limited.

In advertising the following services the Canadian National Railways acts only in the capacity of Agents; therefore, while highly recommending the Outfitters to guests, it does not assume any legal responsibility whatsoever relative to the services provided.

Arrangements can be made at the Trail Riders' Desk in the Main Building for all scheduled and special short saddle trips, also for trail and camping trips, and for guide service.

The horses, equipped with Mexican stock-saddle or English riding-saddle, are locally bred and of good type.

Saddle and camping trips to any point in this vast Park, for any duration of time or for any distance, can be arranged at the Trail Riders' Desk, where information regarding big-game hunting outside the Park can also be obtained. The longer saddle trips can be planned with greater advantage as to cost, individual comforts, and tastes.

Saddle, trail and camping trips are contingent on good weather conditions.

Every effort commensurate with trail conditions will be made to maintain scheduled times of departure and arrival.

It is very important that visitors who intend to hike or ride the trails bring with them suitable clothing, including riding or hiking boots, woollen stockings or socks, woollen jacket or sweater, heavy breeches, flannel or mackinaw shirt, slicker, gloves, and suitable hat or cap.

On camping trips, personal effects are limited to 20 pounds per person. Regular camping equipment supplied by the Outfitter does not include personal accessories such as towels, soap, slickers, etc.

No responsibility will be assumed for the loss on the trail of valuables or personal equipment.

Theatre Bus to Jasper every evening, except Sunday. Cost, 25c. per person.

A private party theatre bus can be arranged for at a rate of 25c. per person; minimum charge, \$3.50.

TAXI SERVICE—Taxi Service within the Lodge area, e.g. to the Golf Course, to the Pony Barns, to see the bears, or to and from the cabins: 50c for each trip.

During inclement weather, free motor transportation is provided between the cabins and the Main Building.

Free motor transportation is provided every Sunday morning for guests who wish to attend Church Service. Buses leave the Main Entrance at 7:45, 9:45 and 10:45 a.m.

Motor-car Services are available at all times between 6:00 a.m. and 12:00 midnight, at the regular tariff rates. After midnight, a charge of \$2.00 will be made for each car movement within the Lodge area; outside the Lodge area, special rates will apply for any car movement between 12:00 midnight and 6:00 a.m.

ALL-EXPENSE TRAIL TOURS

The Official Outfitters—Fred Brewster's Rocky Mountain Camps Limited—operate a series of All-Expense Trail Tours. Particulars of these can be obtained by applying to the nearest Passenger Agent of the Canadian National Railways.

GUIDE SERVICE

The management recommends that no mountain, saddle, or hiking trip be made without the services of a guide; parties who make trips without one do so at their own risk. The cost of a mounted guide is \$1.50 per hour, \$4.00 per half day, and \$7.00 per day. One guide is required for a party numbering up to five persons, an extra one, for more than five persons. Guide charges are pro rata according to the number in the party.

The guides are fully qualified, widely experienced, and thoroughly dependable.

RATES FOR SADDLE HORSES

Note: For a horse or a guide, one day consists of not more than nine (9) hours and not more than twenty (20) miles.

Mountain horses equipped with Mexican stock-saddle or English riding-saddle: \$1.50 for the first hour, \$1.00 for each additional hour; \$3.00 per half day, \$5.00 per day. Special rate of \$24.50 per week for reserved horses. Horses for mountain trips Nos. 7 and 8, as listed on page 36, \$6.00 per day.

SHORT SADDLE TRIPS.

NOTE:—Slickers are not provided by the Outfitter.

Saddle Trip No. 1: Jasper Park Lodge Sawdust Trail—Graded to a breadth averaging from ten to fifteen feet and sufficiently wide for a party of three to ride abreast, this new bridle path, rendered dustless by a generous application of soft sawdust, forms a vast circuit, with the Lodge itself as a centre. The trail leads through Pine and Fir forests, by lake shore and river bank, skirts the golf-course, and ascends to the bench below Signal Mountain, offering from its different vantage points ever-changing vistas of the charming Athabaska Valley. Unquestionably, this is the most beautiful and scenic twelve-mile horseback ride on the Continent. Riding time, 3 hours.

Saddle Trip No. 2: Maligne Canyon—The route is over the back trails away from the motor roads and follows the Athabaska Trail, traversing the entire length of Maligne Canyon. A beautiful, easy ride of 12 miles return. Riding time, 3 hours.

Saddle Trip No. 3: Golf Course and Old Fort Point (Hudson's Bay Table Top)—The route skirts the greater part of the golf course, proceeds up the Buffalo Prairie Trail

to the top of the ridge, and out on to Old Fort Point. This trip affords a splendid view of the Athabaska Valley, the Lodge, Mt. Edith Cavell, and the mountains on both sides of the upper river. Distance, seven miles return. Riding time, 2 hours.

Saddle Trip No. 4: Caledonia Lake—Fourteen miles return. A small lake lying west of Jasper on a rocky bench above the Miette River, Caledonia Lake is reached by passing through Jasper and following the Miette road to Cabin Creek Bridge. Here the trail branches off and follows the left bank of Cabin Creek. Riding time, 4½ hours.

Saddle Trip No. 5: Pyramid Lake—Sixteen miles return. This trail leads the rider through Jasper, ascends the hill to the north, crosses Cottonwood Creek Valley, and then passes along the ridge above Pyramid Lake. Riding time, 5 hours.

Saddle Trip No. 6: Buffalo Prairie-Wabasso Lake—Twenty miles return. An interesting trail winding through beautiful scenery. Excellent fishing in the lake waters. Riding time, 5 hours.

ALL-DAY SADDLE TRIPS

Saddle Trip No. 7: Signal Mountain—Sixteen miles return. One of the most delightful of all the rides leads to the top of Signal Mountain (altitude 7,400 feet). The view from here, embracing the Athabaska Valley and the Yellowhead Pass, is superb.

In addition to the eight rides described above, there are numerous other interesting rides. Full information can be obtained at the Trail Riders' Desk in the Main Building.

Saddle Trip No. 8: Whistlers Mountain—Eighteen miles return. This is another wonderful trip. The mountain is situated just above the junction of the Miette and Athabaska Rivers, and reached by an interesting, well-beaten trail.

EXTENDED RIDING AND CAMPING TRIPS

Saddle Trip No. 9: Maligne Lake and Sky Line Trail Trip—For those who enjoy riding at a high altitude, the return trip from Maligne Lake over the Sky Line Trail offers a new and exhilarating experience. *If snow conditions permit, this trip will be operated between July 1st and August 31st.*

First day—leave Jasper Park Lodge at 9:30 a.m., motor to Medicine Lake, take motor boat across the lake and proceed by motor-car to Maligne Lake, arriving at 1:00 p.m.

Second day—rest at Maligne Lake and take scenic motor-boat trip to the upper end of Maligne Lake (34 miles return).

Third day—leave Maligne Lake Chalet at 9:00 a.m. with guide and saddle-horse, cross Maligne River via the saddle-horse bridge, follow the Shovel Pass Trail over the northeast shoulder of Bald Mountain to the Evelyn Creek ford, and proceed up the long, easy slope to the summit of Little Shovel Pass at timber line. From the summit of Little Shovel Pass the rider gets a splendid view of the four miles of alpland, to be traversed before making the last climb to the summit of Big Shovel Pass (8,000 ft.). On the banks of a small mountain stream between the passes

a stop is made for lunch. An easy descent across the shale slopes brings the rider to the overnight camp at Shovel Pass.

Fourth day—the route leads upward from Big Shovel Pass to the skyline of the Maligne Range and for more than two miles maintains an altitude of eight thousand feet. The high altitude and peculiar location of the trail offer the rider in clear weather a magnificent view of the mountains in all directions. This is, beyond doubt, the most comprehensive panorama obtainable from a saddle. From the skyline a short, rapid descent is made to the basin at the rear of Tekarra Peak. After a short stop here for lunch, the rider continues around the east and north base to the top of Signal Mountain, which overlooks Jasper Park Lodge and the Athabaska Valley. The descent from Signal Mountain to the Lodge is made over the regular Signal Mountain trail.

This is a four-day inclusive trip. Cost, including boat trip on Maligne Lake, \$57.00 per person.

This trip can be made in three days by taking the scenic boat trip across Maligne Lake on the evening of the first day; cost, \$50.00 per person.

Saddle Trip No. 10: Columbia Icefield—Maligne Lake—Sky Line.

Seven-day combination motor-car, motor boat, saddle-horse, and camping trip. If snow conditions permit, the first trip will be made on or about July 1st.

First day—Leave Jasper Park Lodge at 8:00 a.m. and motor to Columbia Icefield where lunch is served at the Chalet. Joining guides and trail outfit near Nigel Creek bridge, the party proceeds by saddle-horse and pack-train up Nigel Creek and over Nigel Pass to Four Point Camp at the head waters of the main Brazeau River.

Second day—Cross Jonas Shoulder to Water Falls Camp on the Poboktan River.

Third day—Down the Poboktan River and over Maligne Pass to a camp on the upper Maligne River.

Fourth day—Down Maligne River Valley to Maligne Lake Chalet.

Fifth day—At Maligne Lake Chalet take scenic motor-boat trip to the upper end of Maligne Lake and return.

Sixth day—Leave Maligne Chalet, cross Evelyn Creek, Little Shovel Pass, and Big Shovel Pass to Shovel Pass Camp.

Seventh day—From Shovel Pass Camp proceed over the Sky Line Trail and Tekarra Basin to Jasper Park Lodge.

Inclusive cost, \$140.00 each.

This trip may be made by the reverse route, i.e. leave Jasper Park Lodge for Tekarra Basin, ascend the Sky Line to Big Shovel Pass for overnight stop, then descend to Maligne Lake Chalet, etc. Those who wish to make the trip by this route must give an advance notice of four full days.

Saddle Trip No. 11: Maligne Lake—Sky Line—Tonquin Valley. A seven-day saddle and camping trip, including the Maligne Lake—Sky Line trip as well as a three-day trip to Tonquin Valley. Cost, \$90.00 each. On completion of the Maligne Lake—Sky Line portion of this trip, an overnight stop is made at Jasper Park Lodge before proceeding to Tonquin Valley Chalet. The charges for this accommodation are extra.

Saddle Trip No. 12: Berg Lake—Mount Robson.

First day—From Jasper by motor-car to Viewpoint, near Cavell Lake, and by saddle-horse to Tonquin Valley via the Astoria Valley.

Second day—At Tonquin Valley Chalet; side trip to Surprise Point.

Third day—Through Honor Pass to Camp Fowler at the head of Clairvaux Valley.

Fourth day—Through Clairvaux Pass via Mt. Fitzwilliam to a camp at Yellowhead Pass near Lucerne.

Fifth day—Over the shoulder of Seven Sisters Mountain to a camp on the upper waters of the Miette River.

Sixth day—Through Centre Passage across the head waters of Grant Brook, then through Grant Pass to a camp at the head waters of the Snaring River.

Seventh day—Through Colonel Pass to a camp on the upper Moose River.

Eighth day—Through Moose Pass to a camp on Calumet Creek.

Ninth day—Through Robson Pass to a camp on Berg Lake.

Tenth day—Remain at Berg Lake Camp; side trip to the main Robson Glacier.

Eleventh day—Via Tumbling Glacier, Emperor Falls, Valley of a Thousand Falls, Kinney Lake, and Grand Forks River to Mt. Robson, whence the railroad is reached.

Cost, including guides, food, horses, camp equipment, etc. for a minimum of three persons, one hundred and seventy-five dollars each (\$175.00). Special rates for parties numbering five or more persons. *Because of the extra expense of returning guides, horses, and equipment from Mt. Robson to Jasper, the regular trail and camping rates do not apply on this trip.*

Saddle Trip No. 14: North Boundary and Mount Robson—In that section of the Park which lies north of the main line of the Canadian National Railways are to be seen numerous majestic peaks, passes rich in mountain flora, lakes and streams ideal for fishing, and an abundance of wild game, such as moose, caribou, deer, sheep, goats and bears. Through this interesting country, a twelve-day trail and camping trip is made from Brewster's Black Cat Ranch to Mount Robson. The route leads through the northern portion of Jasper National Park via Solomon Summit, Rock Lake, the Valley of the Snake Indian River, through Byng Pass and Twin Tree Lakes, up the Valley of the Smoky River to Adolphus Meadows and Berg Lake. After remaining one day at Berg Lake, the trip continues through the Valley of a Thousand Falls to Mount Robson Station.

Cost per person, including railway fare between Jasper and Mount Robson and between Jasper and the Ranch, for a minimum of three persons, \$200.00. Special rates for parties numbering five or more. *Because of the extra expense of returning guides, horses, and equipment from Mt. Robson to Jasper, the regular trail and camping rates do not apply on this trip.*

OTHER TRAIL AND CAMPING TRIPS

Besides the regular trips described in the foregoing, many other long and short trips, as interesting as they are varied, can be arranged to suit the wishes of all.

The cost of trail and camping trips including complete camping equipment, guides, horses, food, etc., is as follows:

	Per Day
One person (guide and cook).....	\$30.00
Two persons (guide and cook).....	37.50
Three persons (guide and cook).....	45.00
Three persons (guide, cook, and wrangler).....	50.00
Each additional person.....	12.00

Slickers not included in camping equipment.

These charges are based on trail days from outfitting base at Jasper. If trail riders join or

leave their pack outfit at some point other than Jasper the cost of moving the outfit and the necessary motor services will be extra.

BREWSTER'S BLACK CAT RANCH

On the Eastern boundary of the Park, this ranch is thirty-five miles from Jasper, and six miles from Brule Station on the main line of the Canadian National Railways. Excellent riding trails, comfortable modern accommodation. Of peeled-log construction, the main building comprises a living-room, dining-room, and kitchen. Sleeping accommodation is provided in two-room cabins, each room being furnished with two single

For maps, suggestions, and full information, write to "Fred Brewster's Rocky Mountain Camps Limited, Jasper, Alberta."

beds and a private bath. Rates: \$8.00 a day, \$48.00 a week, per person, including food, lodging, and saddle-horse, as well as transportation from and to Brule Station; for a stay of a month or longer, 10% discount. Telephone connection with Canadian National Telegraphs at Brule. Management, Fred and Jack Brewster, P.O. Address: Jasper National Park, Alberta.

THREE-DAY ALL-INCLUSIVE TRIP

First day—Leave Jasper Park Lodge at 1:00 p.m. and motor to Tunnel Rock on the Athabaska River. Take motor boat to Warden's Landing, thence by saddle-horse or motor-car to the ranch.

Second day—With guide and saddle-horse, spend the day riding the beautiful foothill trails to points of interest such as Ogre

TO BREWSTER'S BLACK CAT RANCH

Canyon, Solomon Mountain, or Indian Encampment.

Third day—Again in the saddle, with trail lunch, off for a morning ride. Early in the afternoon the return boat trip is taken, and Jasper Park Lodge is reached by 4:00 p.m.

Cost for the three days, \$27.00 per person. Extra time at the ranch, \$8.00 per day.

HIKING PARTIES

Accommodation at permanent camps at the regular rates; see page 40.

Guides for hiking parties. . . . \$7.00 per day.

Hiking Trips with Guide

The following rates will apply for hiking trips which, with guide in attendance, can be made over the regular trails to any part of the Park:

One person \$15.00 per day
Two persons 23.00 per day
Each additional person 7.50 per day

These rates include charges for pack-horses to carry food, bedding, tents and camp equipment for the party, in addition to the twenty pounds per person allowance of personal baggage.

THE MALIGNE DISTRICT

The Maligne district is one of the most interesting in the Park, not only on account of its remarkable canyon as referred to on Page 33, but because of its two beautiful lakes — Medicine and Maligne. The drive to the latter, with boat trip to the head of the lake, provides unforgettable glimpses of the beauty and grandeur of a great mountain world.

Medicine Lake, about 15 miles distant from Jasper Park Lodge and reached by automobile, is five miles long and a little over half a mile wide. At the upper end of the lake is Medicine Lake Chalet. Leaving Medicine Lake the road follows the Maligne River, now a tumultuous greenish-white stream of considerable size. Almost ten miles south one catches the first exciting glimpse of the shining tops of the snow peaks surrounding Maligne Lake. On the latter, near the outlet to the river, stands Maligne Lake Chalet. Before the Chalet and extending in a southeasterly direction for seventeen miles, with a breadth varying from two hundred yards to two miles and a shore line of some fifty miles, lies Maligne Lake, the largest glacial-fed body of water in the Canadian Rockies.

The vista from the lower end of Maligne Lake makes up a charming alpine picture, but one must take the boat trip beyond the Narrows, nine miles from the Chalet, where the upper part of the lake is revealed, to realize the full glory of this masterpiece, and to understand the praise it has drawn from all mountain lov-

ers who have been fortunate enough to see it.

Beginning with Mount Samson (a jagged peak of ten thousand feet facing the Chalet on the left), the altitude of the peaks forming the Maligne group (Mounts Charlton, Unwin, Warren, Mary Vaux, and Maligne) gradually increases until, in Mount Brazeau, it reaches eleven thousand, three hundred and eighty feet.

The mountains rise precipitously from the lake and are heavily laden with snow and ice. At the south-west end of the lake, farthest from the Chalet, lies a snowfield of considerable size, and leading in a southerly direction towards the Brazeau River district, along the western base of Mount Brazeau, is a high, broad snow pass, affording easy access to this intensely interesting neighbourhood. The mountains in the Maligne Lake district are admirably suited to both ice and rock climbing, and many comparatively easy climbs can be successfully undertaken by the amateur.

The mountains, meadows, and flowers of the alplands will prove of great interest to botanist and naturalist alike. Sheep, goats, caribou, moose, and deer frequent these pastures. The Opal Hills, facing the Chalet on the east, are the home of the sheep and the goat, while the mountain sides overlooking the lake, particularly those about the south-east, are used extensively by the mountain goat as a summer pasture.

What to do at Maligne Lake

Ride or hike to Maligne Pass, to the top of the Opal Hills, or to the haunt of the caribou at the summit of Bald Mountain.

Take canoe, rowboat, or outboard motor-boat trips on the lake, also a scenic motor-boat trip to the upper end of Maligne Lake, 34 miles return.

Fish for speckled trout in Maligne Lake, Mona Lake, and Maligne River.

Play badminton and bow-and-arrow golf. Outfits supplied free of charge.

Arrangements can be made for summer skiing by applying to Fred Brewster's Rocky Mountain Camps Limited.

Transportation Schedule to Maligne Lake

Leave Jasper Park Lodge at 9:30 a.m., motor to Medicine Lake, take motor boat across the lake, and proceed by motor-car to Maligne Lake, arriving at 1:00 p.m. The return journey is over the same route, leaving Maligne Lake Chalet at 3:00 p.m., and arriving at Jasper Park Lodge at 5:30 p.m.

Cost: transportation as described above, \$11.50. Charges at chalets, sightseeing motor-boat trip on Maligne Lake, etc., are extra.

Should a party wish to make the trip at any other than the regular scheduled times, an additional charge will be made.

All-Inclusive Trips from Jasper Park Lodge to Maligne Lake and Return

One-day Trip. Cost for transportation and luncheon at Maligne Lake Chalet: \$13.00 per person.

Two-day Trip. Cost for transportation, accommodation and meals at Maligne Lake Chalet, and scenic motor-boat trip on Maligne Lake: \$22.50 per person in canvas houses,

and \$24.50 per person in the four-room cabin.

Three-day Trip. Cost for transportation, accommodation and meals at Maligne Lake Chalet, and scenic motor-boat trip on Maligne Lake: \$29.50 per person in canvas houses, and \$33.50 per person in the four-room cabin.

Boats and Canoes at Lakes in the Maligne District

Operated by Mrs. Grace Phillips

Canoes, skiffs, dinghies, and motor boats, at Maligne, Medicine, Beaver, and Mona Lakes can be hired at the following rates:

For fishing—canoes, skiffs, and dinghies, with outboard motors: \$1.00 for the first hour, 50 cents for each additional hour; \$4.00 per day; \$20.00 per week. Without motors: 50 cents first hour, 25c for each additional hour; \$2.00 per day; \$10.00 per week.

For cruising — drive-yourself — outboard motorboats for five or more passengers: \$2.50 for the first hour; \$1.00 for each additional hour.

Gasoline for outboard motors is extra: 50 cents per gallon at Medicine Lake; \$1.00 per gallon at Maligne Lake.

Guides to row, paddle, or operate boats: \$5.00 per day, or 50 cents per hour.

Round-trip boat fare on Medicine Lake (eight miles return) \$1.50 per person.

Round-trip boat fare on Maligne Lake (34 miles return): \$4.00 per person.

MALIGNE RIVER ANGLERS' CLUB

Anglers visiting the Maligne area will have an opportunity, without additional expense, to qualify for membership in the Maligne River Anglers' Club. An angler who catches a speckled brook trout weighing not less than a pound qualifies for membership in the Maligne River Anglers' Club and receives a bronze

lapel button. The angler who catches the heaviest speckled brook trout receives a gold lapel button, emblematic of the championship of the Maligne River Anglers' Club. The angler taking the second heaviest trout receives a silver button.

TONQUIN VALLEY

Among the many beauty spots in the Canadian Rockies, none is more outstanding than the Tonquin Valley and that splendid range of mountains which rises along the spiral ridge of the continent from Mount Fraser northward, on the western boundary of Jasper National Park.

Tonquin Valley lies verdant, wide and open, high up on the shoulders of the great ridge that forms the Divide, at an elevation of 6,450 feet. Brilliant masses of wild flowers, the vivid greens of the coarse grass, and the dark velvety hue of pines, give the valley a smiling loveliness, which contrasts with and softens the unrelieved majesty of the black and jagged peaks. On every hand, too, are signs of wild life. Its waters are famous for splendid rainbow trout fishing.

Near the southern end of the valley is a beautiful sheet of water three miles long and about a mile wide, divided by a rocky promontory into two parts, forming what are known as the Amethyst Lakes. Their waters are pale in color with amethyst shadows running from the sides, a color probably due to vegetation, accentuated when seen from a height, which has given them their names.

Forming a great arc from southwest to northwest, the Ramparts stretch along the western side of the valley without a sign of vegetation to relieve their rugged majesty. At all hours the Ramparts are impressive, but they are most splendid at sundown.

This beautiful valley is second to none in its interest to the angler, the alpinist, and the photographer.

The main trail to the Tonquin Valley is in from View Point, the latter being sixteen miles from Jasper on the Cavell motor road. The route is along the northern slopes of Mount Sorrow to Verdant Creek. Crossing the latter, it traverses the base of the north-east corner of Throne Mountain and, at a distance of some four miles from the highway, crosses the Astoria River. The trail then follows the northwestern bank of the Astoria

for two and one-half miles before swinging to the right. After a very short climb to open country, it crosses the Alplands to the Amethyst Lakes, a distance of three and one-half miles.

Another good route to this region is the trail up Portal Creek Valley. The two together make a delightful loop route, probably unsurpassed by any other trail journey of equal length in the Rockies.

Transportation Schedule to Tonquin Valley

Leave Jasper Park Lodge at 9:00 a.m. and motor 20 miles to View Point at the lower end of Cavell Lake, where guides, saddle-horses, and pack-horses are stationed to complete the trip. Luncheon is taken on the trail and the party reaches the Chalet at 3.00 p.m. On return, leave Tonquin Valley Chalet at

10.00 a.m. and arrive at Jasper Park Lodge at 4:00 p.m. Cost, for transportation by motor-car and saddle-horse, also luncheons on the trail, \$25.00 per person for the return trip. **Charges at Tonquin Valley Chalet are extra.**

Distance from Jasper, 26 miles.

All-Inclusive Three-Day Trip to Tonquin Valley

Cost for round-trip transportation and accommodation at Tonquin Valley Chalet, \$37.50 per person.

ACCOMMODATION AT CHALETS

These chalets are operated by the Official Outfitters, Fred Brewster's Rocky Mountain Camps Limited. Reservations can be made direct or through the Manager of Jasper Park Lodge.

Medicine Lake Chalet, elevation 4,500 feet, situated at the upper (south) end of Medicine Lake where the river enters it, is a log building containing dining-room, sitting-room, and sleeping accommodation for ten persons. Side trip to Beaver Lake—good fishing. A passenger launch and good fishing-canoes are available at Medicine Lake.

of the four-room cabin, and include bureau, two chairs, grass rug, bedside mats, washstand with plentiful supply of hot and cold water, and two comfortable single beds with white bedding.

Complete bath and toilet facilities are provided in a separate building.

Comfortable beds, plain but appetizing meals, and courteous attention on the part of the staff in charge, guarantee the trail rider, angler, and other visitors an enjoyable stay.

Maligne Lake Chalet, elevation 5,500 feet, situated on Maligne Lake at the outlet to Maligne River, comprises a central building 25' x 40', containing a living-room with big, open fireplace, a dining-room with a seating capacity of 30 persons, and a well-equipped kitchen. Along the front, and on one side, stretches a spacious, screened-in veranda from which visitors get a splendid view of the lake.

Sleeping accommodation at Maligne Lake Chalet is provided in a four-room cabin, and in heated canvas houses; accommodation for 30 persons.

Shovel Pass Camp, elevation 6,800 feet, located in Shovel Pass basin at timber line, is of sound construction, and provides comfortable accommodation for eight persons. Alpland hiking, rock climbing, mountain game, and flora. From this camp the visitor gets an excellent view of the Athabaska and Tonquin Valleys, also of the Rampart Range including Mount Geikie, of the Whirlpool Valley as far as the Continental Divide, and of the Columbia Icefield far away to the south.

The Four Room Cabin is constructed along the lines of the cabins at Jasper Park Lodge and is similarly furnished; each room contains two single beds.

The Canvas Houses have permanent wooden frames and floors, and 6 foot walls. Each is separately heated, amply lighted, and fully ventilated. The furnishings are similar to those

Tonquin Valley Chalet, elevation 6,500 feet, situated on the Amethyst Lakes at the base of the Rampart Range, comprises a central log building containing a dining-room, a living-room, and a kitchen. Comfortable sleeping accommodation is provided in floored and heated canvas houses; each is furnished with two single beds, washstand, mirror, stove, etc.

RATES AT CHALETS AND CAMPS

(American Plan—including meals)

Maligne Lake Chalet and Medicine Lake Chalet remain open from June 15th to September 15th. Tonquin Valley Chalet and Shovel Pass Camp remain open from July 1st to August 31st. Provided sufficient notice is given, parties who wish to visit these camps before or after the regular season can make arrangements to do so.

	Per Day	Per Week
Tonquin Valley Chalet.....	\$7.00	\$42.00
Shovel Pass Camp.....	6.00	36.00
Medicine Lake Chalet.....	5.00	30.00
Maligne Lake Chalet		
4-room Cabin.....	9.00	54.00
Heated Canvas Houses.....	7.00	42.00

Motor-boat service on Maligne Lake (34 miles return) \$4.00 per passenger.

WHAT TO WEAR

At the Lodge—The question of what to wear is entirely a matter of personal desire; no set rule is followed. While some ladies wear formal dress for dinner and dancing, others dress informally. Gentlemen usually wear flannels and sack coat; dinner jackets are seldom worn.

Because of the altitude of Jasper National Park, the summer evenings are usually cool. To ensure comfort, visitors should bring with them a medium-weight Spring and Fall coat, or wrap.

For Motoring—In addition to a medium-weight coat or wrap, gloves, and coloured glasses add to the comfort of a drive. Low-heeled shoes are recommended for those

who wish to explore points of interest at the scheduled stops along the drives.

For Riding or for Trail Trips—It is very important that visitors who intend to hike or ride the trails bring with them suitable clothing, including riding or hiking boots, woollen stockings or socks, woollen jacket or sweater, heavy breeches, flannel or mackinaw shirt, slicker, gloves, and suitable hat or cap. On camping trips, personal effects are limited to 20 pounds per person. Regular camping equipment, supplied by the Outfitter, does not include personal accessories, such as towels, soap, slickers, etc. No responsibility will be assumed for the loss on the trail of valuables or personal equipment.

ALL-EXPENSE TOURS

All-Expense Tours, covering stays of one to four days at Jasper Park Lodge, have been so planned that purchasers may cover the most ground in the least possible time and at the least expense. They include a selection of the most popular sightseeing motor drives, **but do not include rail transportation to and from Jasper, or motor coach fares between Jasper and Lake Louise, Banff, Calgary, etc.**

The costs for All-Expense tours are based on the minimum rates for hotel room and meals. If superior type of accommodation is desired, give full particulars to your nearest Canadian National Railways' Representative, who will obtain quotation and reservation from the Manager of Jasper Park Lodge. The price of Tours shown herein does not include Government Tax where assessable.

All-Expense Tours are arranged for those arriving at, and departing from, Jasper Park Lodge as follows:

Tours	Arriving via	Departing via
11 to 14	Trains 1 or 2	Trains 1, 2, or Prince Rupert Gateway.
21 to 24	Train from Prince Rupert.	Trains 1 or 2.
31 to 34	Trains 1 or 2.	Motor coach to Lake Louise, Banff, etc.
41 to 44	Motor coach from Lake Louise, Banff, etc.	Trains 1, 2, or Prince Rupert Gateway.

Times of arrival and departure of trains at Jasper, as shown for these Tours, are only approximate, and should be confirmed by consulting a current time-table.

ONE DAY TOUR, NO. 11

For the benefit of guests arriving at Jasper Park Lodge via trains 1 or 2, and departing via trains 1, 2, or Prince Rupert Gateway.

WESTBOUND	or	EASTBOUND
FIRST DAY Arrive at 1:30 p.m. (M.T.) from the East		FIRST DAY Arrive at 1:25 p.m. (P.T.) from the West
SECOND DAY Leave at 1:05 p.m. (P.T.) for the West		SECOND DAY Leave at 3:00 p.m. (M.T.) for the East

DETAILED TOUR SCHEDULE

- FIRST DAY** —Transfer by motor to Jasper Park Lodge, on Lac Beauvert, four miles distant, where American Plan accommodation is provided.
- Afternoon** —Open for golf, tennis, boating, swimming, hiking, horse-back riding, motoring.
- Evening** —Dinner, motion pictures, bridge, dancing.
- SECOND DAY**—Leave the Lodge at 9:30 a.m. for a 40-mile motor drive to Mt. Edith Cavell and the Glacier of the Angel. This drive offers fine panoramas of the Athabaska and Astoria Valleys, and of numerous snow-capped peaks, including Mts. Signal, Tekarra, Kerkeslin, Hardisty, Franchere, The Throne, and the incomparable Mt. Edith Cavell. The highway, terminating at the foot of the famous Glacier, affords an excellent view of this vast field of living ice.
- Afternoon** —After luncheon at the Lodge, transfer by motor to Jasper Station.

TOUR COST

Minimum-priced rooms	With detached bath	With private bath
Single rooms	\$14.00	\$16.00
Double rooms (per person)	13.00	\$15.00

TWO DAY TOUR, NO. 12

For the benefit of guests arriving at Jasper Park Lodge via trains 1 or 2, and departing via trains 1, 2, or Prince Rupert Gateway.

<p style="text-align: center;">WESTBOUND</p> <p>FIRST DAY Arrive at 1:30 p.m. (M.T.) from the East</p> <p>SECOND DAY—At Jasper Park Lodge</p> <p>THIRD DAY Leave at 1:05 p.m. (P.T.) for the West</p>	or	<p style="text-align: center;">EASTBOUND</p> <p>FIRST DAY Arrive at 1:25 p.m. (P.T.) from the West</p> <p>SECOND DAY—At Jasper Park Lodge</p> <p>THIRD DAY Leave at 3:00 p.m. (M.T.) for the East</p>
---	----	---

DETAILED TOUR SCHEDULE

FIRST DAY —Transfer by motor to Jasper Park Lodge, on Lac Beauvert, four miles distant, where American Plan accommodation is provided.

Afternoon —Open for golf, tennis, boating, swimming, hiking, horse-back riding, motoring.

Evening —Dinner, motion pictures, bridge, dancing.

SECOND DAY —Leave the Lodge at 9:00 a.m. for an 80-mile motor trip down the valley of the Athabaska River, via the new Inter-Provincial Highway, to Punch Bowl Falls. A stop is made here before the trip continues along the Fiddle River Canyon through an entirely different scenic region to the famous Miette Hot Springs.

Afternoon —Leave the Lodge at 3:15 p.m. for the General Drive. This is a 28-mile motor trip to Maligne Canyon and through Jasper to Pyramid Lake. For full particulars, see Sightseeing Motor Drive No. 1, described on Page 33.

Evening —Dinner, motion pictures, bridge, dancing.

THIRD DAY —Leave the Lodge at 9:30 a.m. for a 40-mile motor drive to Mt. Edith Cavell and the Glacier of the Angel. This drive offers fine panoramas of the Athabaska and Astoria Valleys, and of numerous snow-capped peaks, including Mts. Signal, Tekarra, Kerkeslin, Hardisty, Franchere, The Throne, and the incomparable Mt. Edith Cavell. The highway terminates at the foot of the famous Glacier.

Afternoon —After luncheon at the Lodge, transfer by motor to Jasper Station.

TOUR COST

Minimum-priced rooms	With detached bath	With private bath
Single rooms	\$32.00	\$36.00
Double rooms (per person)	\$30.00	\$34.00

THREE DAY TOUR, NO. 13

For the benefit of guests arriving at Jasper Park Lodge via trains 1 or 2, and departing via trains 1, 2, or Prince Rupert Gateway.

<p style="text-align: center;">WESTBOUND</p> <p>FIRST DAY Arrive at 1:30 p.m. (M.T.) from the East</p> <p>SECOND AND THIRD DAYS At Jasper Park Lodge</p> <p>FOURTH DAY Leave at 1:05 p.m. (P.T.) for the West</p>	or	<p style="text-align: center;">EASTBOUND</p> <p>First Day Arrive at 1:25 p.m. (P.T.) from the West</p> <p>SECOND AND THIRD DAYS At Jasper Park Lodge</p> <p>FOURTH DAY Leave at 3:00 p.m. (M.T.) for the East</p>
---	----	---

DETAILED TOUR SCHEDULE

FIRST DAY —Transfer by motor to Jasper Park Lodge, on Lac Beauvert, four miles distant, where American Plan accommodation is provided.

Afternoon —Leave the Lodge at 3:15 p.m. for the General Drive. This is a 28-mile motor trip to Maligne Canyon and through Jasper to Pyramid Lake. For full particulars, see Sightseeing Motor Drive No. 1, described on Page 33.

Evening —Dinner, motion pictures, bridge, dancing.

SECOND DAY —Leave the Lodge at 9:00 a.m. for an 80-mile motor trip down the valley of the Athabaska River, via the new Inter-Provincial Highway, to Punch Bowl Falls. A stop is made here before the trip continues along the Fiddle River Canyon through an entirely different scenic region to the famous Miette Hot Springs.

Afternoon —Open for golf, tennis, boating, swimming, hiking, horse-back riding, motoring.

Evening —Dinner, motion pictures, bridge, dancing.

THIRD DAY —Leave the Lodge at 9:00 a.m. for a 150-mile trip to the Columbia Icefield. This drive follows the route of the Mount Edith Cavell Drive to a point beyond the

crossing of the Astoria River, whence it continues along the valley of the Athabaska. From here the route penetrates through the very heart of the Canadian Rockies to the largest and most impressive icefield outside the Arctic Circle. With an estimated area of 110 square miles, the average elevation of this amazing icefield ranges from 9,000 to 10,000 feet, which, because the waters of its melting glaciers travel thousands of miles to three oceans, the Atlantic, the Pacific, and the Arctic, has been beautifully named "Mother of Rivers". Unquestionably, this is AMERICA'S GREATEST SCENIC DRIVE.

Evening —Dinner, motion pictures, bridge, dancing.

FOURTH DAY—Morning open for golf, tennis, boating, swimming, hiking, horse-back riding, motoring.

Afternoon —After luncheon at the Lodge, transfer by motor to Jasper Station.

TOUR COST

Minimum-priced rooms	With detached bath	With private bath
Single rooms.....	\$47.00	\$53.00
Double rooms (per person).....	\$44.00	\$50.00

FOUR DAY TOUR, NO. 14

For the benefit of guests arriving at Jasper Park Lodge via trains 1 or 2, and departing via trains 1, 2, or Prince Rupert Gateway.

WESTBOUND

FIRST DAY

Arrive at 1:30 p.m. (M.T.) from the East

SECOND, THIRD AND FOURTH DAYS
At Jasper Park Lodge.

FIFTH DAY

Leave at 1:05 p.m. (P.T.) for the West

or

EASTBOUND

FIRST DAY

Arrive at 1:25 p.m. (P.T.) from the West

SECOND, THIRD AND FOURTH DAYS
At Jasper Park Lodge.

FIFTH DAY

Leave at 3:00 p.m. (M.T.) for the East

DETAILED TOUR SCHEDULE

FIRST DAY —Transfer by motor to Jasper Park Lodge, on Lac Beauvert, four miles distant, where American Plan accommodation is provided.

Afternoon —Open for golf, tennis, boating, swimming, hiking, horse-back riding, motoring.

Evening —Dinner, motion pictures, bridge, dancing.

SECOND DAY—Leave the Lodge at 10:00 a.m. for the General Drive. This is a 28-mile motor trip to Maligne Canyon and through Jasper to Pyramid Lake. For full particulars, see Sightseeing Motor Drive No. 1, described on Page 33.

Afternoon —Leave the Lodge at 3:15 p.m. for a 40-mile drive to Mt. Edith Cavell and the Glacier of the Angel. This drive offers fine panoramas of the Athabaska and Astoria Valleys, and of numerous snow-capped peaks, including Mts. Signal, Tekarra, Kerkeslin, Hardisty, Franchere, The Throne, and the incomparable Mt. Edith Cavell. The highway terminates at the foot of the famous Glacier.

Evening —Dinner, motion pictures, bridge, dancing.

THIRD DAY —Leave the Lodge at 9:00 a.m. for an 80-mile motor trip down the valley of the Athabaska River, via the new Inter-Provincial Highway, to Punch Bowl Falls. A stop is made here before the trip continues along the Fiddle River Canyon through an entirely different scenic region to the famous Miette Hot Springs.

Afternoon —Open for golf, tennis, boating, swimming, hiking, horse-back riding, motoring.

Evening —Dinner, motion pictures, bridge, dancing.

FOURTH DAY—Leave the Lodge at 9:00 a.m. for a 150-mile trip to the Columbia Icefield. This drive follows the route of the Mount Edith Cavell Drive to a point beyond the crossing of the Astoria River, whence it continues along the valley of the Athabaska. From here the route penetrates through the very heart of the Canadian Rockies to the largest and most impressive icefield outside the Arctic Circle. With an estimated area of 110 square miles, the average elevation of this amazing icefield ranges from 9,000 to 10,000 feet.

Evening —Dinner, motion pictures, bridge, dancing.

FIFTH DAY —Morning open for golf, tennis, boating, swimming, hiking, horse-back riding, motoring.

Afternoon —After luncheon at the Lodge, transfer by motor to Jasper Station.

TOUR COST

Minimum-priced rooms	With detached bath	With private bath
Single rooms.....	\$60.00	\$68.00
Double rooms (per person).....	\$56.00	\$64.00

TOURS NO. 21 - 24 INCLUSIVE

For the benefit of guests arriving at Jasper Park Lodge via train from Prince Rupert, and departing via train for the East or West.

- TOUR NO. 21—One and a half day visit**—Covers American Plan accommodation at Jasper Park Lodge, the General Drive, Mount Edith Cavell Drive as well as bus transfer between the station and the Lodge. Cost per person: with detached bath, single \$19.50, double \$18.50; with private bath, single \$21.50, double \$20.50.
- TOUR NO. 22—Two and a half day visit**—Covers American Plan accommodation at Jasper Park Lodge, the General Drive, Miette Hot Springs Drive, the famous Columbia Icefield Drive, as well as bus transfer between the station and the Lodge. Cost per person: with detached bath, single \$40.50, double \$38.50; with private bath, single \$44.50, double \$42.50.
- TOUR NO. 23—Three and a half day visit**—Covers American Plan accommodation at Jasper Park Lodge, the General Drive, Mount Edith Cavell Drive, Miette Hot Springs Drive, the famous Columbia Icefield Drive as well as bus transfer between station and the Lodge. It also permits open time for golf, tennis, horseback riding, swimming, etc. Cost per person: with detached bath, single \$53.50, double \$50.50; with private bath, single \$59.50, double \$56.50.
- TOUR NO. 24—Four and one half day visit**—Covers American Plan accommodation at Jasper Park Lodge, the General Drive, Mount Edith Cavell Drive, Miette Hot Springs Drive, the famous Columbia Icefield Drive, as well as bus transfer between the station and Lodge, with additional open time for golf, tennis, horseback riding, swimming, etc. Cost per person: with detached bath, single \$62.50, double \$58.50; with private bath, single \$70.50, double \$66.50.

TOURS NO. 31 - 34 INCLUSIVE

For the benefit of guests arriving at Jasper Park Lodge via train from the East or West, and departing via motor coach to Lake Louise, Banff, Calgary, etc.

- TOUR NO. 31—One day visit**—Covers American Plan accommodation at Jasper Park Lodge, the Mount Edith Cavell Drive, as well as transfer from the station to Lodge. Cost per person: with detached bath, single \$12.25, double \$11.25; with private bath, single \$14.25, double \$13.25.
- TOUR NO. 32—Two day visit**—Covers American Plan accommodation at Jasper Park Lodge, the General Drive, Mount Edith Cavell Drive, Miette Hot Springs Drive, as well as bus transfer from the station to Lodge. Cost per person: with detached bath, single \$30.25, double \$28.25; with private bath, single \$34.25, double \$32.25.
- TOUR NO. 33—Three day visit**—Covers American Plan accommodation at Jasper Park Lodge, the General Drive, Mt. Edith Cavell Drive, Miette Hot Springs Drive, as well as bus transfer from the station to Lodge, with open time for golf, tennis, swimming, horseback riding or motoring. Cost per person: with detached bath, single \$39.25, double \$36.25; with private bath, single \$45.25, double \$42.25.
- TOUR NO. 34—Four day visit**—Covers American Plan accommodation at Jasper Park Lodge, the General Drive, Mount Edith Cavell Drive, Miette Hot Springs Drive, as well as bus transfer from the station to Lodge, with additional open time for golf, tennis, boating, horseback riding, swimming, etc. Cost per person: with detached bath, single \$48.25, double \$44.25; with private bath, single \$56.25; double \$52.25.

TOURS NO. 41 - 44 INCLUSIVE

For the benefit of guests arriving at Jasper Park Lodge via motor coach from Lake Louise, Banff, Calgary, etc., and departing via trains for the East, the West, or Prince Rupert.

- TOUR NO. 41—One day visit**—Covers American Plan accommodation at Jasper Park Lodge, the Mount Edith Cavell Drive, as well as bus transfer from the Lodge to station. Cost per person: with detached bath, single \$13.50, double \$12.50; with private bath, single \$15.50; double \$14.50.
- TOUR NO. 42—Two day visit**—Covers American Plan accommodation at Jasper Park Lodge, the General Drive, Mount Edith Cavell Drive, and the Miette Hot Springs Drive, as well as bus transfer from Lodge to station. Cost per person: with detached bath, single \$31.50, double \$29.50; with private bath, single \$35.50, double \$33.50.

TOUR NO. 43—Three day visit—Covers American Plan accommodation at Jasper Park Lodge, the General Drive, Mount Edith Cavell Drive, and Miette Hot Springs Drive, as well as bus transfer from Lodge to station, with open time for golf, tennis, swimming, horseback riding, etc. Cost per person: with detached bath, single \$40.50, double \$37.50; with private bath, single \$46.50, double \$43.50.

TOUR NO. 44—Four day visit—Covers American Plan accommodation at Jasper Park Lodge, the General Drive, Mount Edith Cavell Drive, and Miette Hot Springs Drive, as well as bus transfer from Lodge to station, with additional open time for golf, tennis, swimming, horseback riding, etc. Cost per person: with detached bath, single \$49.50, double \$45.50; with private bath, single \$57.50, double \$53.50.

**MOTOR COACH SERVICE OVER THE COLUMBIA ICEFIELD HIGHWAY
BETWEEN JASPER AND LAKE LOUISE, BANFF, CALGARY, ETC.**

Roomy, modern, sightseeing coaches, operated by Jasper Park Lodge, leave the Lodge daily from June 15th to September 16th, for the Columbia Icefield, where connection is made to services operated by the Brewster Transport Company, Limited (The Gray Line) and the Rocky Mountain Tours and Transport Co. for movement to Lake Louise, Banff, Calgary, etc.

Read Down		SCHEDULE				Read Up	
		9:00 a.m. Lv. Jasper Park Lodge	Ar.	5:45 p.m.			
		9:30 a.m. Lv. Jasper	Ar.	5:30 p.m.			
		12:30 p.m. Ar. Columbia Icefield	Lv.	2:30 p.m.			
Via Rocky Mountain Tours	Via Brewster Transport Company				Via Brewster Transport Company	Via Rocky Mountain Tours	
2:00 p.m.	2:30 p.m. Lv. Columbia Icefield	Ar.	12:00 noon		12:30 p.m.		
5:30 p.m.	6:00 p.m. Ar. Lake Louise	Lv.	8:30 a.m.		8:30 a.m.		
9:00 a.m.	7:00 p.m.	9:00 a.m.	6:10 p.m. Lv. Lake Louise	Ar.	8:20 a.m.	6:30 p.m.	8:30 a.m.
12:00 noon	8:30 p.m.	12:00 noon	7:30 p.m. Ar. Banff	Lv.	7:00 a.m.	4:00 p.m.	7:00 a.m.
4:00 p.m.	1:15 p.m.		Lv. Banff	Ar.	12:00 noon		11:30 a.m.
6:30 p.m.	4:00 p.m.		Ar. Calgary	Lv.	9:15 a.m.		9:00 a.m.

RATES

Between Jasper Park Lodge or Jasper and		Motor Coach	PRIVATE CARS 1-5 Pass.	6 Pass.
Columbia Icefield	One way	\$ 6.25	\$ 31.25	\$ 37.50
" "	Round trip	10.00	50.00	60.00
Lake Louise	One way	13.50	67.50	81.00
" "	Round trip	22.50	112.50	135.00
Banff	One way	18.00	90.00	108.00
" "	Round trip	29.00	145.00	174.00
Calgary	One way	20.50	130.00	158.00
" "	Round trip	33.50	195.00	234.00

Children under 12 years, half fare.

Government Tax, where assessable, is not included in above fares.

The above fares do not include meals at any point en route.

BAGGAGE TRANSFER VIA MOTOR SERVICES—The foregoing rates include the free transfer of a reasonable quantity of hand baggage; they do not include the transfer of trunks or other heavy baggage, charges for which (between Jasper Park Lodge or Jasper, and the following points) are:

Columbia Icefield	— \$1.25 per piece each way.
Lake Louise	— 3.00 " " " "
Banff	— 4.00 " " " "

**HONOURING OF COUPONS OF THE BREWSTER TRANSPORT COMPANY, LIMITED
(The Gray Line), AND OF THE ROCKY MOUNTAIN TOURS AND TRANSPORT
COMPANY**

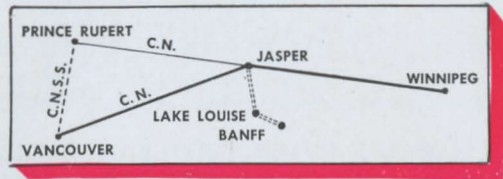
Coupons and Prepaid Orders of the Brewster Transport Company Limited (The Gray Line), and of the Rocky Mountain Tours and Transport Co. will be honoured by Jasper Park Lodge for passage in its motor equipment, on all sightseeing motor drives in Jasper National Park.

PASSENGERS MAY INCLUDE BANFF AND LAKE LOUISE IN THEIR ITINERARY ENROUTE TO, FROM OR THROUGH JASPER

In order that passengers visiting the Canadian Rockies may enjoy the scenic features of both Jasper National Park and Banff National Park, the Canadian National Railways have made arrangements whereby motor transportation between Jasper and Banff and/or Lake Louise over the famous Columbia Icefield Highway may be purchased when railway transportation is secured, thus enabling passengers to complete transportation arrangements (both rail and motor) for the entire trip at originating point.

The motor side trip over the Columbia Icefield Highway from Jasper to Lake Louise and Banff and return may be purchased in connection with your Canadian National ticket reading to or through Jasper.

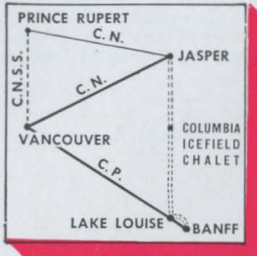
Or the motor trip may be incorporated in a circle tour of the principal resorts of the Canadian Rockies, as outlined below:



EASTBOUND FROM OR VIA VANCOUVER

Canadian National Railways to Jasper direct or via C.N.S.S. and Prince Rupert (at slight additional cost to cover meals and berth on steamer)—motor transport over Columbia Icefield Highway to Banff or Lake Louise, thence returning via Canadian Pacific Railway to Vancouver, permitting stopovers as desired enroute.

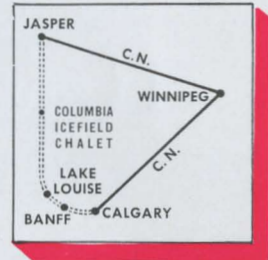
This trip is also available in the opposite direction.



WESTBOUND FROM OR VIA WINNIPEG

Canadian National Railways to Jasper—motor transport over Columbia Icefield Highway to Calgary—thence Canadian National Railways to Winnipeg.

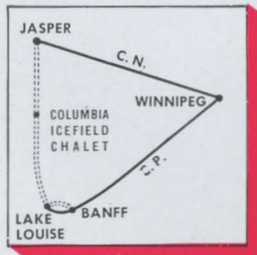
This trip is also available in the opposite direction.



WESTBOUND FROM OR VIA WINNIPEG

Canadian National Railways to Jasper—motor transport over Columbia Icefield Highway to Lake Louise or Banff—thence Canadian Pacific Railway to Winnipeg.

This trip is also available in the opposite direction.

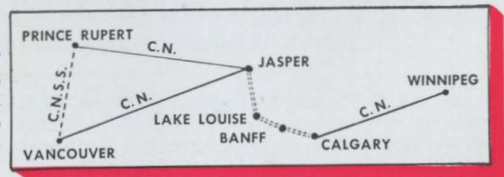


TO AND FROM THE PACIFIC COAST VIA JASPER, BANFF, LAKE LOUISE

Passengers holding tickets to or from the Pacific Coast via Canadian National Railways may include the three mountain resorts of Jasper, Banff and Lake Louise, as follows:

EASTBOUND FROM OR VIA VANCOUVER

Canadian National Railways to Jasper direct or via C.N.S.S. and Prince Rupert at slight additional cost to cover meals and berth on steamer—motor transport to Calgary via Lake Louise and Banff thence Can. Nat. Rys.



WESTBOUND FROM OR VIA WINNIPEG

Canadian National Railways to Calgary—motor transport to Jasper via Banff and Lake Louise—thence Canadian National Railways to Vancouver direct, or via Prince Rupert and C.N.S.S. (at slight additional cost to cover meals and berth on steamer).

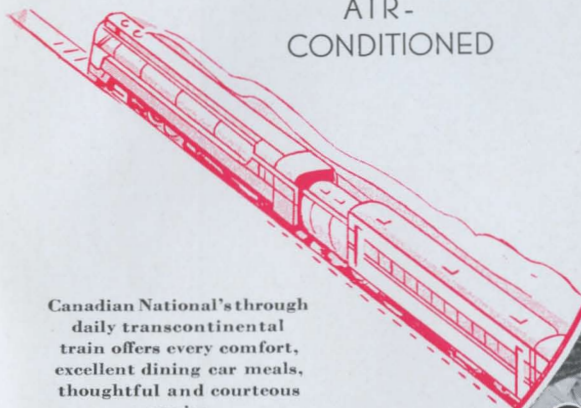
BAGGAGE

HAND BAGGAGE will be carried free of charge on motor services between Jasper Park Lodge or Jasper, Alberta, and Lake Louise, Banff or Calgary. TRUNKS AND OTHER BAGGAGE will be checked by rail to the extent covered by rail transportation held by passengers. TRUNKS AND OTHER HEAVY BAGGAGE will be checked via truck service at regular tariff rates.

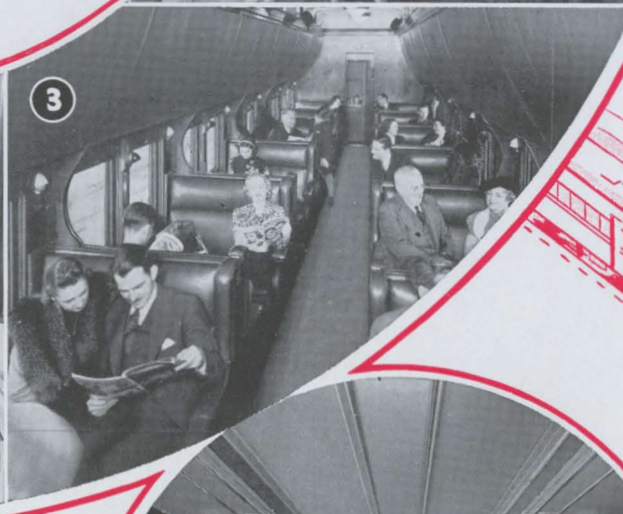
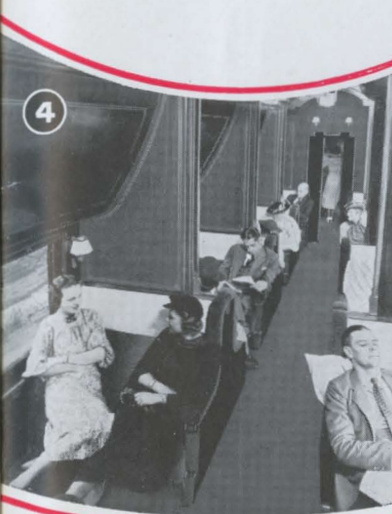
NOTE:—Alternative routes via Prince Rupert will be dependent on the operation of C.N.S.S. steamer service between Prince Rupert and Vancouver.

The CONTINENTAL LIMITED

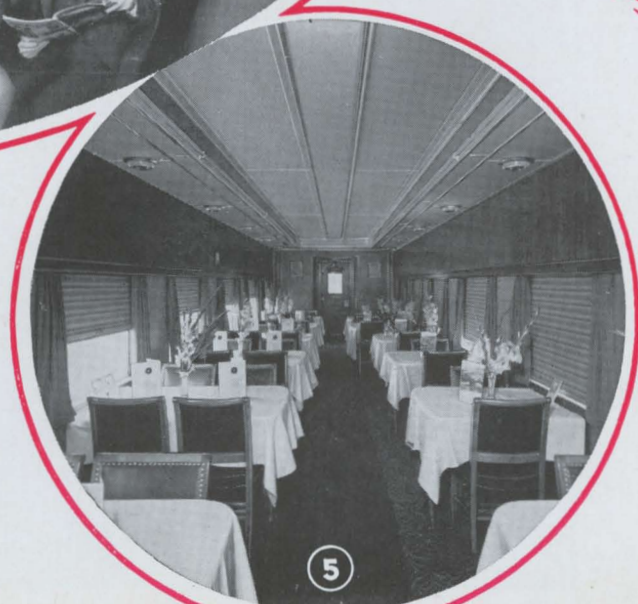
AIR-
CONDITIONED

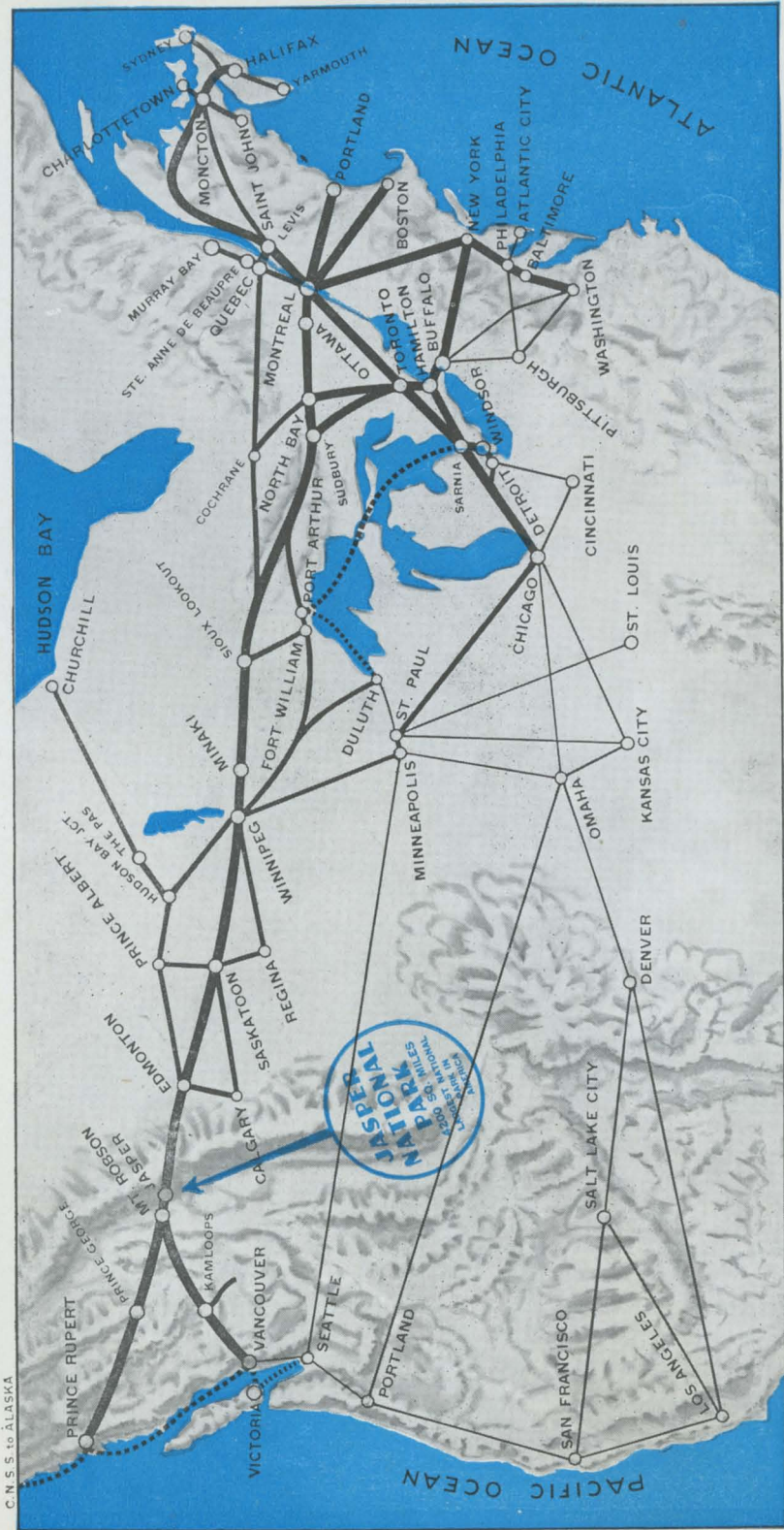


Canadian National's through daily transcontinental train offers every comfort, excellent dining car meals, thoughtful and courteous service.



1. The Day Coach.
2. Solarium Compartment Buffet Lounge Car.
3. Tourist Sleeping Car.
4. Standard Sleeping Car.
5. The Dining Car.





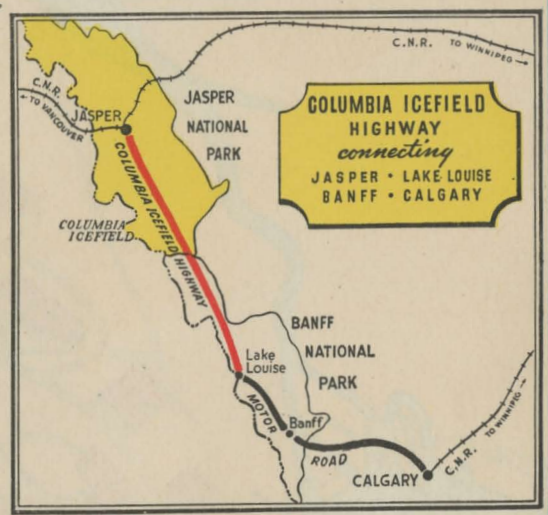
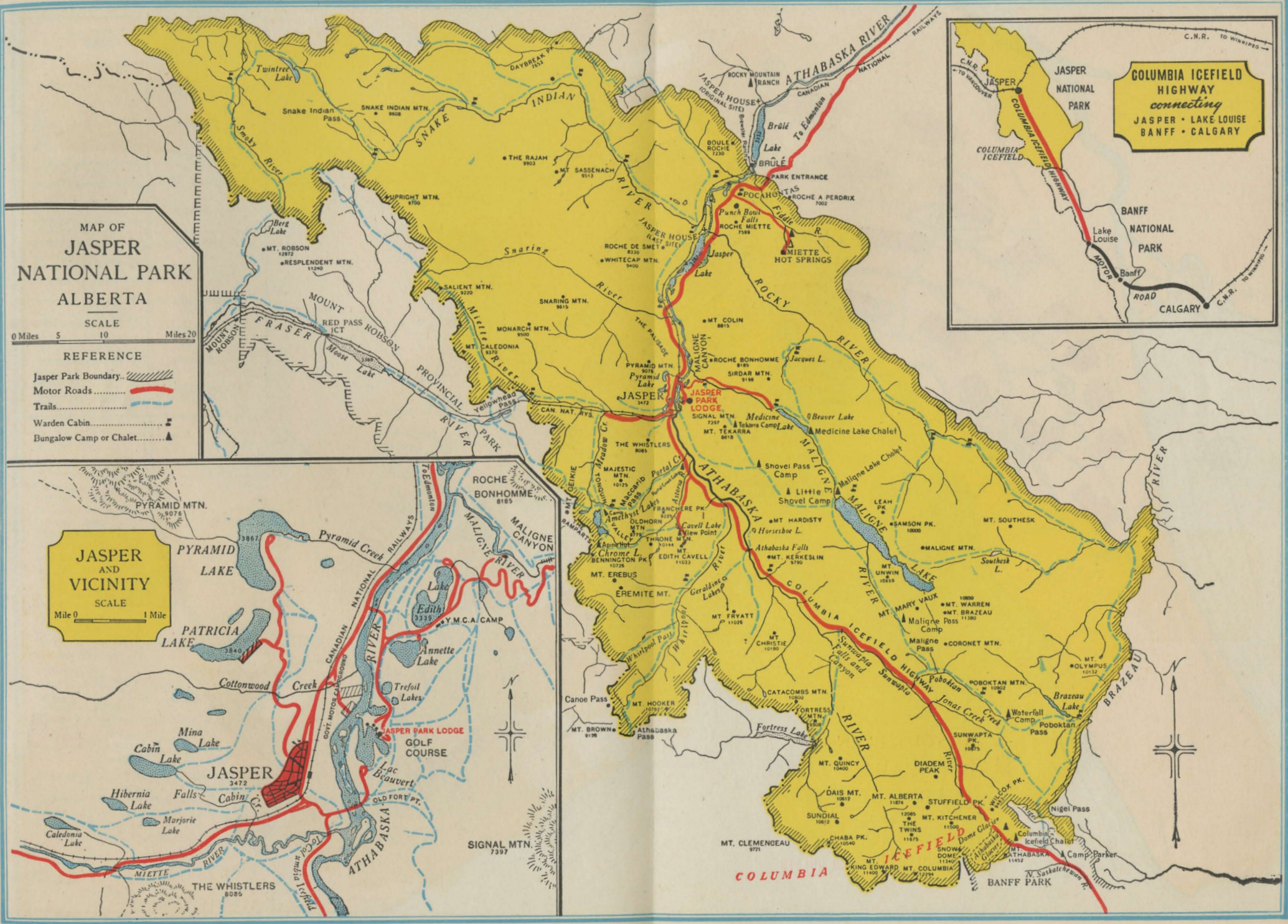
Canadian National Railways System Map showing principal lines and routes from important Canadian and United States centres to JASPER NATIONAL PARK in the Canadian Rockies. Through sleeping cars from St. Paul and Minneapolis, via Winnipeg, bring United States mid-west points within two days' journey of Jasper. Summer excursion tickets are on sale to Jasper, Alta., during period May 15 to September 30th inclusive each year. In addition, one way, also round trip summer excursion tickets between Edmonton and east and Pacific Coast destinations are valid for stop-over at Jasper within limit.

MAP OF
JASPER NATIONAL PARK
ALBERTA

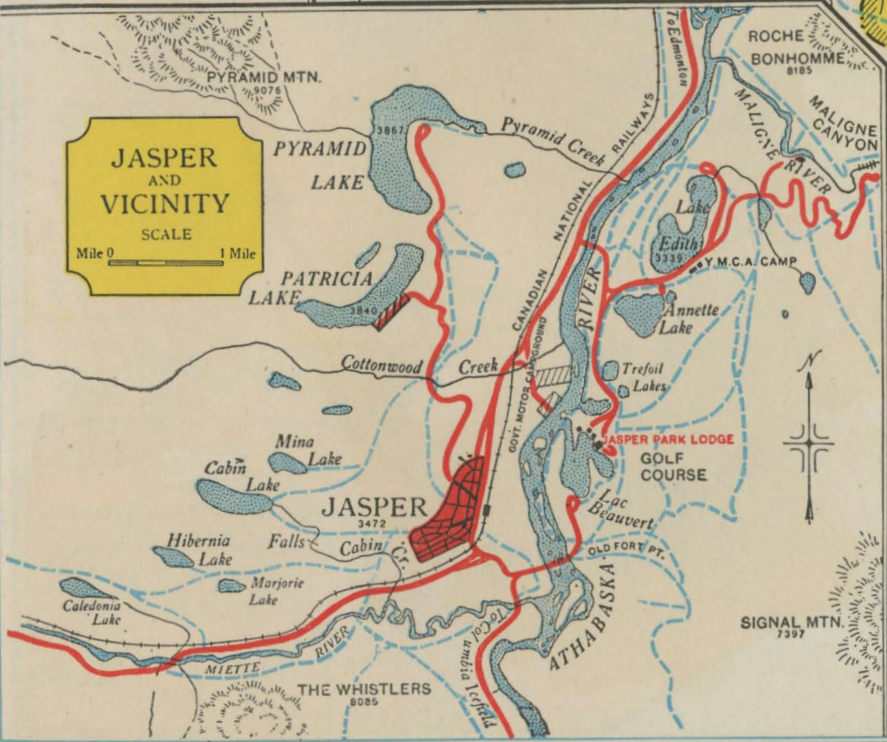
SCALE
 0 Miles 5 10 Miles 20

REFERENCE

- Jasper Park Boundary.....
- Motor Roads.....
- Trails.....
- Warden Cabin.....
- Bungalow Camp or Chalet.....



JASPER AND VICINITY
 SCALE
 Mile 0 1 Mile



COLUMBIA

ICEFIELD

**LAYOUT PLAN OF
JASPER PARK LODGE**
JASPER NATIONAL
PARK
CANADIAN ROCKIES
ACCOMMODATION FOR 650 GUESTS

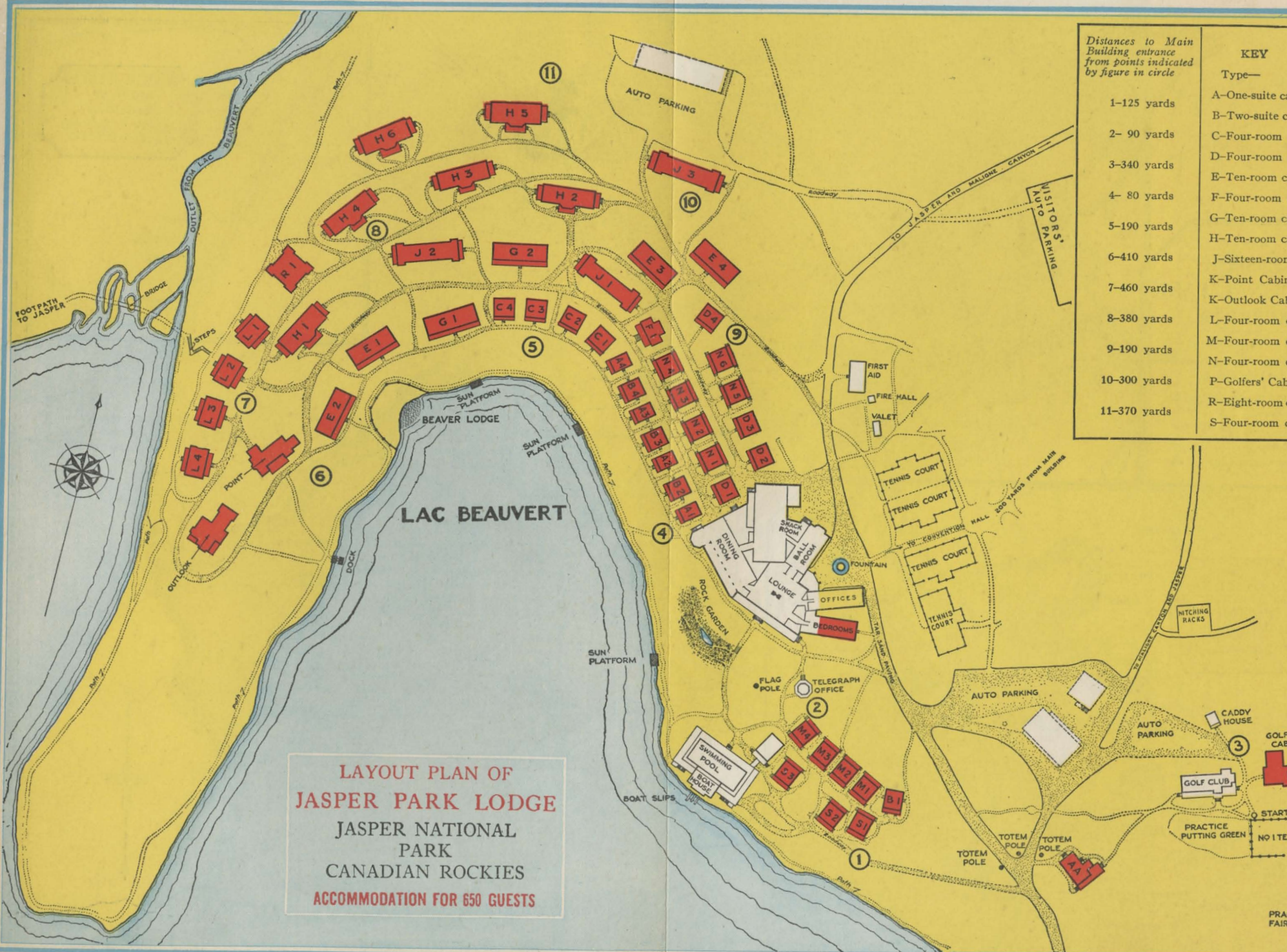
Distances to Main
Building entrance
from points indicated
by figure in circle

- 1-125 yards
- 2- 90 yards
- 3-340 yards
- 4- 80 yards
- 5-190 yards
- 6-410 yards
- 7-460 yards
- 8-380 yards
- 9-190 yards
- 10-300 yards
- 11-370 yards

KEY

Type—

- A—One-suite cabin
- B—Two-suite cabin
- C—Four-room cabin
- D—Four-room cabin
- E—Ten-room cabin
- F—Four-room cabin
- G—Ten-room cabin
- H—Ten-room cabin
- J—Sixteen-room cabin
- K—Point Cabin
- K—Outlook Cabin
- L—Four-room cabin
- M—Four-room cabin
- N—Four-room cabin
- P—Golfers' Cabin
- R—Eight-room cabin
- S—Four-room cabin



PRACTICE FAIRWAY

CANADIAN NATIONAL RAILWAYS PASSENGER AGENCIES

CANADA AND UNITED STATES

Belleville, Ont.	243 Front St.
Boston, Mass.	186 Tremont St.
Brantford, Ont.	153 Colborne St.
Brockville, Ont.	Cor. King East and Market Sts.
Buffalo, N.Y.	22 North Division St.
Calgary, Alta.	218 Eighth Ave., West
Charlottetown, P.E.I.	C.N.Rys. Station
Chicago, Ill.	4 South Michigan Ave.
Cincinnati, Ohio	206 Dixie Terminal Bldg.
Detroit, Mich.	1239 Washington Blvd.
Duluth, Minn.	428 West Superior St.
Edmonton, Alta.	Cor. Jasper and 100th Sts.
Guelph, Ont.	91 Wyndham St.
Halifax, N.S.	Cor. Barrington and George Sts.
Hamilton, Ont.	7 James St., North
Jasper, Alta.†	Jasper Park Lodge
†	During Season Jasper Park Lodge is open.
Kansas City, Mo.	101 West Eleventh St.
Kingston, Ont.	145 Princess St.
London, Ont.	430 Richmond St.
Los Angeles, Cal.	607 South Grand Ave.
Minneapolis, Minn.	711 Marquette Ave.
Moncton, N.B.	C.N.Rys. General Office Bldg.
Montreal, Que.	384 St. James St., West
New York, N.Y.	673 Fifth Ave., at 53rd St.
Niagara Falls, Ont.	536 Clifton Ave.
North Bay, Ont.	81 Main St.
Oshawa, Ont.	3 King St., West
Ottawa, Ont.	93 Sparks St.
Peterboro, Ont.	Chateau Laurier
Philadelphia, Pa.	324 George St.
Pittsburgh, Pa.	1500 Chestnut St.
Portland, Me.	355 Fifth Ave.
Prince Rupert, B.C.	G.T.Ry. Station
Quebec, Que.	528 Third Ave.
Regina, Sask.	10 Ste. Anne St.
San Francisco, Cal.	Union Station
Saskatoon, Sask.	648 Market St.
Seattle, Wash.	C.N.Rys. Station
Sherbrooke, Que.	1329 Fourth Ave.
St. Catharines, Ont.	23 Wellington St., North
Saint John, N.B.	158 St. Paul St.
St. Louis, Mo.	49 King St.
Sudbury, Ont.	314 North Broadway
Toronto, Ont.	41 Durham St., South
Vancouver, B.C.	N.W. Cor. King and Yonge Sts.
Victoria, B.C.	527 Granville St.
Washington, D.C.	Hotel Vancouver
Windsor, Ont.	911 Government St.
Winnipeg, Man.	922 Fifteenth St., N.W.
Woodstock, Ont.	364 Ouellette Ave.
	Main St. and Portage Ave.
	414 Dundas St.

EUROPE

London, S.W. 1, Eng.	17-19 Cockspur St.
London, E.C. 3, Eng.	95 Leadenhall St.
Liverpool, Eng.	4 Cotton Exchange Bldg.
Southampton, Eng.	44 Athelston Rd.
Cardiff, Wales	35 St. Mary St.
Glasgow, C. 2, Scotland	107 Hope St.

AUSTRALIA AND NEW ZEALAND

Sydney, Australia	"Scottish House," 19 Bridge St.
Melbourne, Australia	360 Collins St.
Wellington, N.Z.	Featherston Chambers

CANADA'S HOTELS OF DISTINCTION

Canadian National operates a distinguished chain of year-round Hotels in the leading cities of the Dominion. Every refinement of accommodation and service. Convenient locations fit them into all Canadian travel itineraries.

CHATEAU LAURIER
Ottawa, Ont.

THE NOVA SCOTIAN
Halifax, N.S.

THE CHARLOTTETOWN
Charlottetown, P.E.I.

PRINCE ARTHUR HOTEL
Port Arthur, Ont.

THE FORT GARRY
Winnipeg, Man.

PRINCE EDWARD HOTEL
Brandon, Man.

THE BESSBOROUGH
Saskatoon, Sask.

THE MACDONALD
Edmonton, Alta.

Open During Summer Season . . .

PICTOU LODGE
Pictou, N.S.

MINAKI LODGE
Minaki, Ont.

JASPER PARK LODGE
Jasper, Alta.

HOTEL VANCOUVER

VANCOUVER, B.C.

(Operated under the joint management of the Canadian National and Canadian Pacific Railway Companies.)



Rising majestically in the heart of Vancouver, at Georgia and Burrard Streets, the Hotel Vancouver is only a few blocks from the Canadian National station, and within five minutes' walk of the financial, shopping and theatre districts.

Single rates, from \$3.50 up. European plan; 560 rooms—each with combination tub and shower-bath.



Jasper

NATIONAL PARK
CANADIAN ROCKIES

CANADIAN
NATIONAL
RAILWAYS