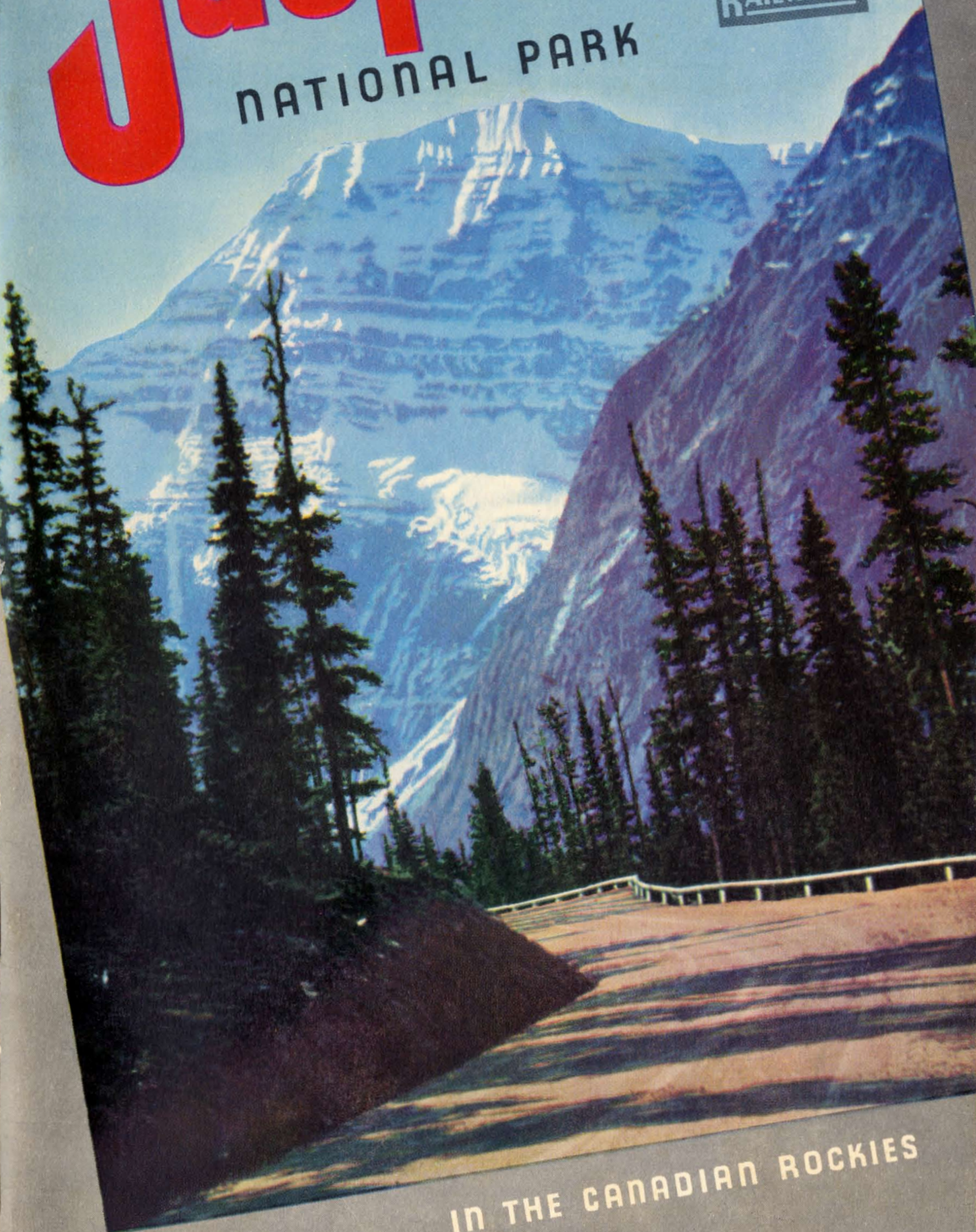


Jasper

NATIONAL PARK

CANADIAN
NATIONAL
RAILWAYS



IN THE CANADIAN ROCKIES

I N D E X

Cover illustrations are from natural color photos of Mount Edith Cavell (11,033 feet), and 16th Green of the Jasper Park Lodge Golf Course.

	PAGE
Accommodation in Jasper National Park	9, 33, 34
All-Expense Package Tours	38-42
Big Game and Camera Hunting	23
Brewster's Black Cat Ranch	37
Canadian National Equipment	47
Canadian National Representatives	inside back cover
Climbing	22
Columbia Icefield	18, 19, 21, 31
Fishing	14, 15, 37
Golfing	10, 11, 29
Hiking Trips	37
Historical and Physical Features	2, 3, 5
Jasper Park Lodge	6, 7, 8, 24, 25
General Information	27
Rates	26
Recreation Facilities	30
Maligne Lake—(Chalets, accommodation, rates, transportation, etc.)	34, 35, 36, 37
Maligne River Anglers' Club	37
Maps—Canadian National System	48
Jasper National Park and Jasper Park Lodge layout of cabins	inside back cover
Miette Hot Springs	31
Motoring	12, 30, 31, 32, 42
Motor Bus Service Jasper-Lake Louise-Banff	42
Mount Robson Park	46
Outfitters	42
Routes to, through or from Jasper National Park	43
Skiing	44, 45
Trail Riding and Camping Trips	16, 17, 32, 33, 35, 36, 37
Trans-Canada Air Lines	Inside Back Cover
What to Wear	29



NO PASSPORTS REQUIRED FOR TRAVEL TO CANADA

This year, more than ever, a friendly welcome awaits you at the Border and throughout the Dominion.

NOTICE TO U.S. TOURISTS

Spend your American dollars *as your needs arise across Canada*. Wherever you go you will be paid the official rate set by the Foreign Exchange Control Board.

JASPER NATIONAL PARK



Natural Color Photograph

Foreword

OF the great national playgrounds on this continent, Jasper National Park, in the Canadian Rockies, is pre-eminent. Within its boundaries embracing 4,200 square miles, is a veritable empire of virgin loveliness offering every attraction for the vacationist.

Above the jagged rim of the universe, peak after peak lifts a high white plume in salute to the sky. From every point of the compass they raise their gallant heads far above the earth. There are uncounted numbers of them and many are unnamed. Between them stretch mile upon mile of alpine meadows in whose wind-blown grasses gay flowers paint the world in color borrowed from the rainbows. Endless green forests cushion their lower slopes and overflow the deep, verdant valleys to nurse along their new found routes young rivers which have found life in the tears of dying glaciers. Up in the alpland meadows, higher still upon lonesome rocky ledges and nestling among the forests of the valleys, like jewels scattered by a careless hand, countless lakes flash back through facets cut from emerald, sapphire, amethyst and jade, a jaunty retort to the sun. From crag and peak, through forest and valley, waterfalls leap in a sheen of silver and a burst of diamond spray.

In this majestic setting, shaded by pine, spruce and douglas fir, stands Jasper Park Lodge, its lovely lawns and tree girt walks mirrored in exquisite Lac Beauvert.

Jasper is a sparkling world. No pen can picture it, no brush can catch its colors. But in the hearts of those who see it, its beauty lives forever.

HISTORICAL AND PHYSICAL FEATURES

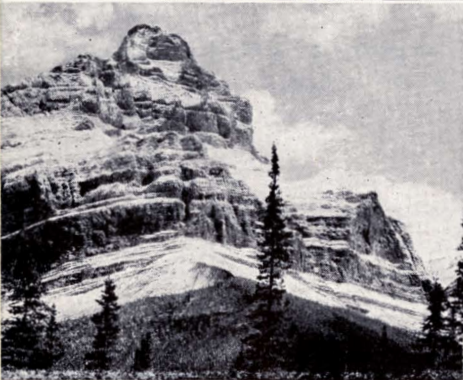
THERE ARE THOSE who have been coming to Jasper each year since 1922 and count themselves pioneers. In a sense they are right. It was not until the Lodge was opened in the Spring of that year that the Park began to attain its present popularity although it had been set aside as a national playground in 1907 and a handful of people had lived there in the interval.

Yet, a hundred years before these out-riders of the Twentieth Century parade of tourists found Jasper, other men with other purposes moved along these valleys, scaled peaks, discovered passes and traced rivers to their sources in the lips of glaciers. Their moccasined feet and the unshod hoofs of Indian ponies fashioned trails in the stony earth of these mountains that fresher feet still follow or which have been used by engineers to plot the routes of highways along which motor cars move smoothly to many points within the Park.

Traders and trappers; miners and monks; explorers and engineers; voyageurs and adventurers were in these processions of pioneers who wound their way southward around the base of La Montagne de la Grande Traverse (now Mount Edith Cavell) up the Athabaska and Whirlpool Rivers, across the Great Divide and down the Wood and Columbia Rivers to Oregon and the coast. Later ones turned westward through the Yellowhead Pass to the Fraser and Thompson Rivers to reach the Pacific at Vancouver.

There were among them men whose names have enriched history. Thompson, Franchere, Simpson, Douglas, Hector and de Smet are a few. Not least is the mysterious little man from Missouri, born Jasper Hawes, who followed the fortunes of the Northwest Trading Company to a post in what is now Jasper and was destined to have his name bequeathed to the largest playground in the world.

(Top) Cavernous pot holes of Maligne Canyon. (Centre) Mount Warren. (Bottom) Saskatchewan Glacier, Columbia Icefield and (right) Mount Christie 10,180 feet.

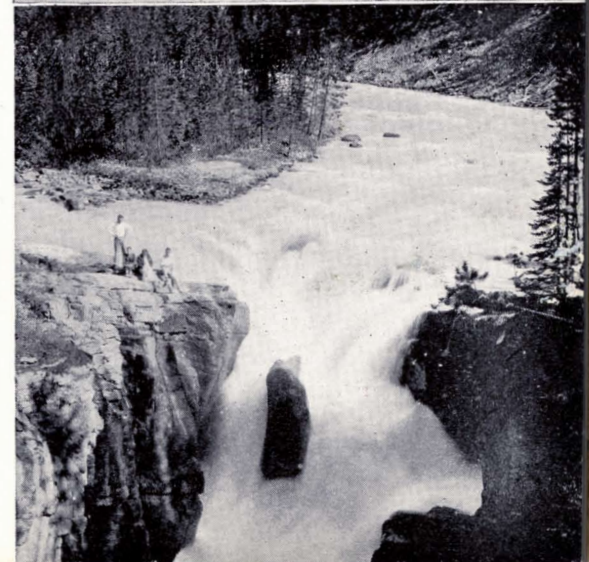




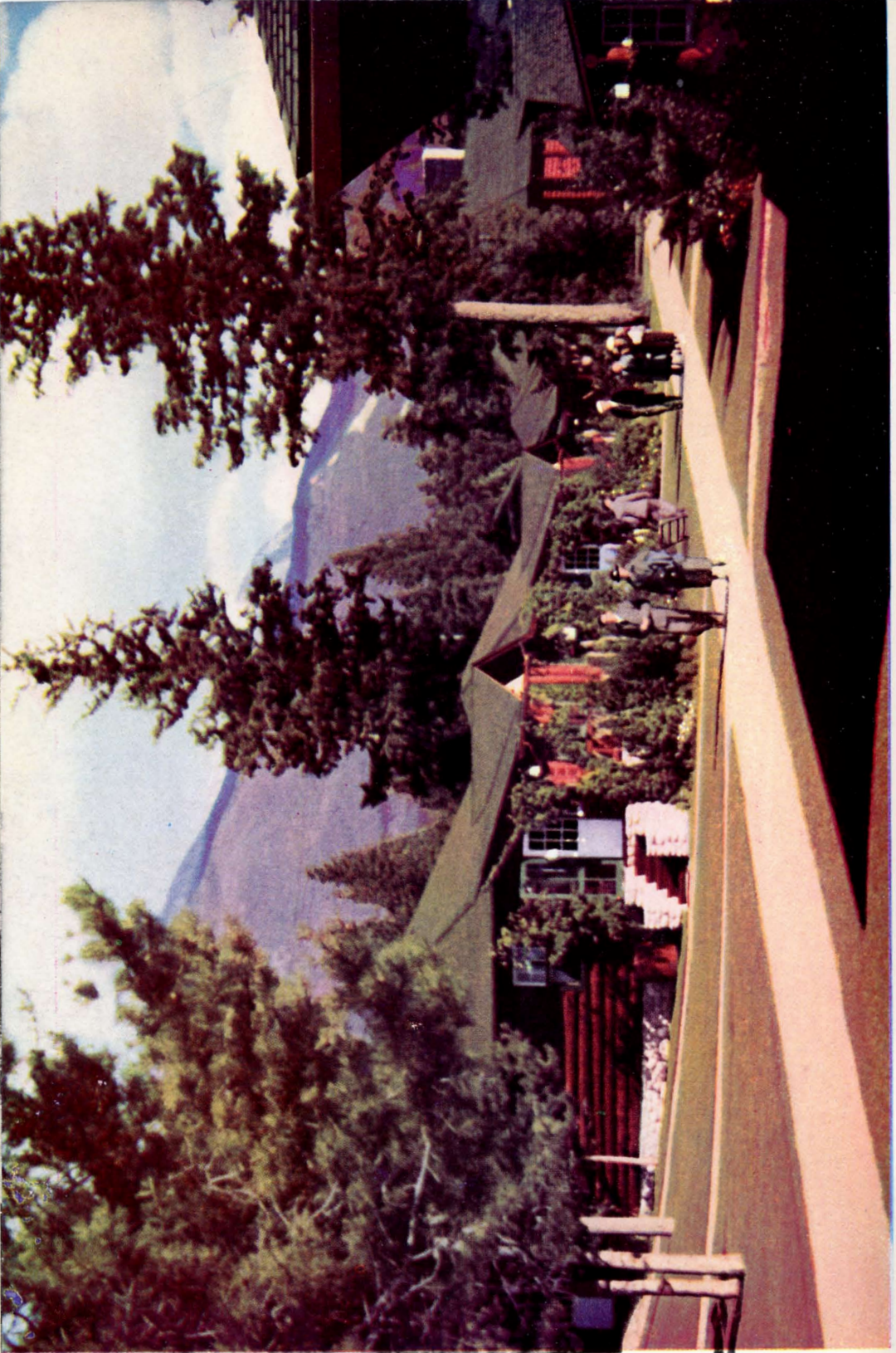
There are 4,200 square miles in Jasper National Park. All of this area, which is slightly larger than Connecticut, is situated in the middle of the Canadian Rockies along the western slope of Alberta. It is served by the Canadian National Railways whose air-conditioned, modern trains make it easily accessible through Winnipeg and Edmonton in the east and Vancouver and Prince Rupert in the west. Within this vast territory there are only two centres of population. One is the town of Jasper which contains Park Administration Headquarters, the Mounted Police Barracks and the homes of residents who are engaged largely in trade or the affairs of the railway. The other is Jasper Park Lodge, four miles by motor road. It is open from June 15th to September 15th and it forms the centre of the cultural, social and recreational life of the summer colony.



The Town and Lodge are set down in the centre of a vast amphitheatre which is known as the Athabaska Valley. Fed by many streams finding birth in melting snows, the Athabaska River threads a winding course through the forests of this great bowl



(Top) The Glacier of the Angel, and an intensely interesting section of the Columbia Icefield. (Centre) Jasper's spectacular mountain ranges hold ever increasing lure for enthusiastic skiers. (Below) Sunwapta Falls, a spectacular example of glacial erosion.



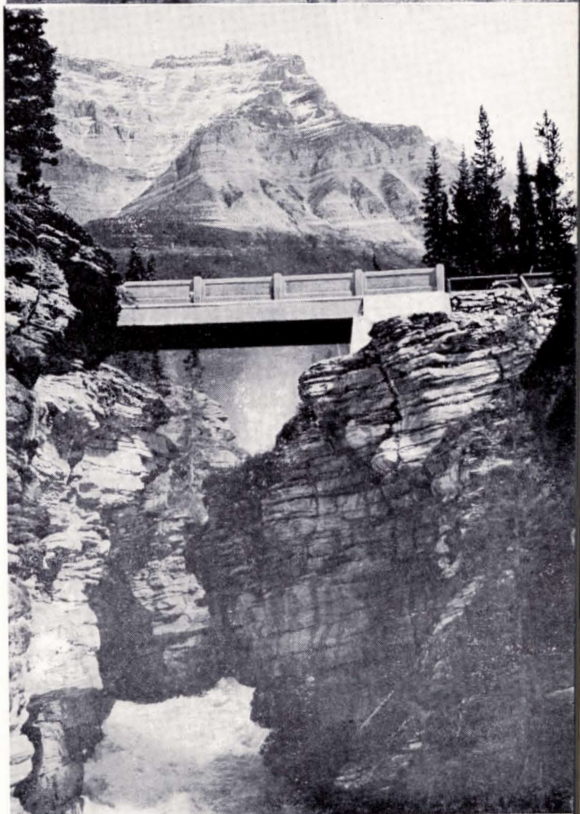
Encircled by the friendly peaks which rim the broad Athabaska Valley and set amid colorful flowers and velvet lawns sloping down to the shore of Lac Beauvert, Jasper Park Lodge has the appearance of a lovely alpine village. Paved walks connect the individual bungalows and lead to the Main Lodge.

Natural Color Photograph

around which an almost complete circle of high mountain ranges has formed a protective bulwark. These peaks are as varied as they are numerous. Cutting into the eastern sky is the knife-like crest of the steel-grey Colin Range whose drabness serves to accentuate the vividness of Pyramid Mountain to the northwest, a peak whose slopes are shot through with browns, maroons, purples, blues and reds. Southeast, beyond the round, bald pate of Signal Mountain, the rough bastion of Tekarra mopes in martial pique upon a world consecrated to peace. Trailing it are Hardisty and Kerkeslin, the latter looking like something transplanted from an Oriental print. Far up the valley towards the source of the Whirlpool River, Fryatt and Christie put their silvered heads together like two old cronies swapping yarns. Southwest, the friendly slopes of The Whistlers edge in the valley and beyond them, almost due south, in regal isolation, rises the stately, matchless form of Mount Edith Cavell.

Of course there is much of Jasper beyond this Valley, indeed within the far reaches of the Valley itself. This is only what may be seen in panorama from the Town or the Lodge. The motor roads disappearing into the forests or winding up the mountain sides and the wandering trails that stretch their slender threads beyond the peaks, over the passes, across alpine meadows and along a thousand valleys within this great park, reveal its full beauty.

No one man has yet seen all of Jasper. Pioneers visited this region in the Nineteenth Century; there are others to-day and it may well be that there will be others in the next. But none has been or shall be disappointed. Jasper never disappoints.



(Top) Punch Bowl Falls. (Bottom) Majestic Mount Kerkeslin, a summit impressive at all hours of the day.

JASPER PARK LODGE

THE men who designed Jasper Park Lodge created a masterpiece.

Using only the simple materials of the nearby mountains and forests, they fashioned a summer resort which achieves the miracle of combining luxury with simplicity, of having spaciousness without bulk, and which is as much a part of its surroundings as are the trees and the peaks. It is hard to believe that in the modest-looking bungalows tucked among the trees or facing the broad lawns that flow eagerly down to the shore of Lac Beauvert, there is ample accommodation for six hundred and fifty guests. It is harder still to realize that within their hospitable doors, these bungalows provide every comfort and convenience that a discriminating traveler could expect. Yet, it's so.

The Lodge consists of a large main building containing the administrative offices and the public rooms, and from it the bungalows radiate in fan formation along paved walks that are generously and attractively landscaped. The bun-

galows vary in size from one suite to sixteen rooms. All are complete in every detail with telephone, electric light, heat, hot and cold running water in every room. Most of the rooms are equipped with bath or shower and there are one or more detached baths in every bungalow.

The front of the Main Lodge provides a view over the wide, velvety lawns, flower beds and rock garden, to Lac Beauvert, one of the most beautiful lakes in the Rockies. It is around this lake that the bungalows are situated. It is a small lake but its coloration is a source of interest and delight. When the skies are clear, the water is almost an aquamarine. When passing clouds trail their shadows across it, bands of color sweep its surface until it glows like an opal. Comfortable chairs, beneath gay umbrellas, dot the lawns and are found at vantage points along the shore.

Beyond Beauvert the view discloses the soft symmetry of the Whistler Range, the glacier and snow-tipped

A section of the spacious Main Lounge.



crown of Mount Edith Cavell and the long penetration of the upper Athabaska Valley among the peaks. To the right stands the painted escarpment of Pyramid Mountain and to the left, the castellated summit of Tekarra. Behind the Lodge rise the wolf-grey walls of the Colin Range with the figure of the Old Man recumbent athwart its crest. Masses of brilliantly-colored flowers among the lawns contrast vividly with the sternness of the peaks and the contrast serves to accentuate the beauty of both. Tall shrubs hide the outline of the open-air heated swimming pool by the lake in front of the lodge, but do not screen from view the graceful flight of the divers. This pool has a railed-off, wading end for children.

There are a limited number of bedrooms in the large central building, or the main lodge, as it is usually called. This building, however, is meant almost entirely for the use of all the guests. In it are located the huge lounge with its two great log-burning fireplaces, the ball room, dining room, snack room, tavern, barber shop, beauty parlor, shops, reservation desk and other facilities which are a standard part of any modern hotel. The dining room can seat 400 guests at a sitting and 300 people can dance comfortably in the ball room.

The hostess arranges introductions, organizes picnics and other entertainment for the children and provides assurance that each guest's visit to the Lodge will be pleasant. A fully equipped medical department with a doctor and trained nurse constantly on duty is maintained at the Lodge.

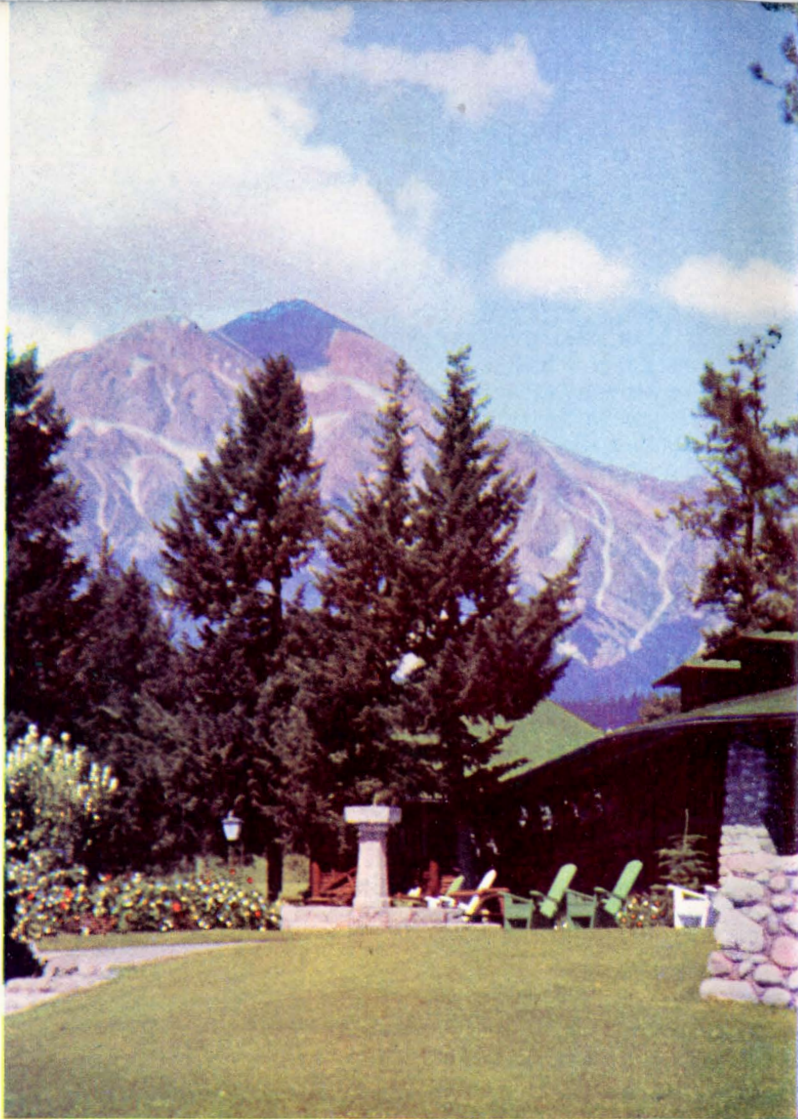
(Top) The Ballroom.
(Centre views) Up-to-date Specialty Shop and Office.
(Bottom) A corner in the Main Dining Room.



A Custom's Officer is stationed at the Lodge so that guests arriving with bonded baggage may have it examined there at leisure.

In addition to the golfing facilities which are described elsewhere in this booklet, the Lodge also has several excellent tennis courts and maintains a fleet of rowboats and canoes for use on the lake. Qualified guides can be secured for alpinists, providing sufficient advance notice is given.

No description of Jasper Park Lodge would be complete without a word about its food and dining room service, for both of which it is justly famous. Only the best food available is served and the menu always offers a wide choice of dishes. Quick, pleasant and intelligent service in the dining room is given by a corps of smart waitresses, most of whom are college students. Music is provided during the dinner hour by an excellent orchestra which also plays dance music in the ball room each night except Sundays.



Natural Color Photograph

(Top) Pyramid mountain, 9076 feet, keeps watch over Jasper town and Jasper Park Lodge like a colossal pagan god.

Modern autobuses transport guests between Jasper Park Lodge and Station.





The pool, with its pure sparkling water warmed to an agreeable temperature, is a very popular rendezvous for swimming, diving, sun bathing and table tennis. Gay parasols lend a note of brilliant color.

ACCOMMODATIONS IN JASPER NATIONAL PARK

VISITORS to Jasper National Park will find accommodation calculated to suit every purse and every taste. The hotels are comfortably furnished, modern in equipment and reasonable in price.

Canada Railway News at Jasper Station operate a first class dining room and lunch counter service. There are also other cafes in Jasper serving meals at reasonable rates.

ATHABASCA HOTEL (European Plan)

Open throughout the year. Rooms with and without bath. Rates: from \$2.50 per day, single, and up. Dining Room Service.

ASTORIA HOTEL (European Plan)

Open throughout the year. Rates: \$2.00 per day single; \$3.00 per day double. Rooms with and without bath. Lunch counter and dining room service.

COLUMBIA ICEFIELD CHALET

Glacier View rooms with bath, from \$4.50 up, single, and \$6.50 up, double, European plan; from \$7.50 up, single, and \$12.50 up, double, American plan. Mountain View rooms without bath, from \$3.50 up, single, and \$5.00 up, double, European plan; from \$6.50 up single, and \$11.00 up, double, American plan. Table d'hôte meals—breakfast, 75¢; lunch, \$1.25; dinner, \$1.25.

JASPER PARK LODGE (American Plan)

see page 26 for rates and accommodation.

KIEFER'S KOSY KABINS

One and a half miles from Jasper on the Columbia Icefield highway. Eight bungalow camps, accommodating 32 persons. Rates on application.

MALIGNE LAKE TOURIST CAMP

Thirty-two miles from Jasper. Summer season only. Floored and heated tents. For rates and reservation apply to Mrs. Donald Phillips, Jasper, Alta.

MEDICINE LAKE CHALET (Amer. Plan)

Twenty-two miles from Jasper. Open July 1 to August 31. See page 34 for rates and accommodation.

MALIGNE LAKE CHALET (Amer. Plan.)

Thirty-two miles from Jasper, at river outlet on lake shore. Open July 1 to August 31. See page 34 for rates and accommodation.

PINE BUNGALOW CABINS

One and a half miles from town of Jasper. Open in summer only. Accommodation for 100 persons. Rates \$1.50 per person and up, with and without housekeeping facilities.

PYRAMID HOTEL (European Plan)

Open throughout the year. Rooms without bath. Rates: \$1.00 and up.

ROCKY MOUNTAIN BUNGALOW CAMPS

Twenty bungalow camps at Whistler Creek, four miles from Jasper on the Columbia Icefield Highway. Rates on application. Dining room and lunch counter in connection.

TONQUIN VALLEY CHALET (Amer. Plan.)

On the shore of Lake Amethyst, 18 miles from Jasper by motor-car and nine miles by saddle-horse. Open July 1st to August 31st. See page 34 for rates and accommodation.

Y.M.C.A. CAMP—Lake Edith.

(5 miles from Jasper Station). Transfer service available from station to camp. Open July and August. Rates \$3.50 per day, \$21.00 per week. For men, women, and family groups.

NOTE:—The Canadian National Railways in furnishing this list of rates and other information, which is the latest obtainable, assumes no responsibility as to its correctness, except for data pertaining to the accommodation provided by the railway company.

THE JASPER PARK LODGE GOLF COURSE is rated among the truly great courses of the world by experts whose opinions are respected.

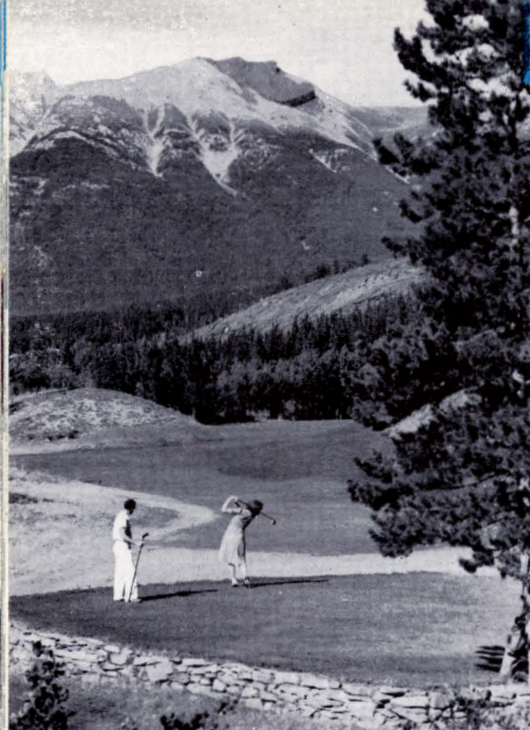
The first tee rests invitingly just two hundred yards from the main building of the lodge. The eighteenth green spreads its emerald lap about one hundred feet from the first tee. In between stretch four of the grandest miles of tees, fairways and greens that any golfer has set eyes on. The fairways are gently undulating. And there isn't a puff on the layout; although the course is set down right in the heart of the Rockies amid scenery that makes it hard for players to keep their eye on the ball, there isn't an uphill drag worthy of the name over the whole route.

There are a number of reasons why Jasper Park Lodge Golf Course has won a high rating. It is a championship course in

every sense of the term. No two holes have the same length. No two have the same character. There is a shot for every club in the bag and never a chance for a good player to ease up. There is no rough

The Jasper Park Lodge Golf Course, rated among the Continent's finest. Its unmatched pictorial setting, broad fairways and beautifully contoured greens, its traps, bunkers and water hazards, assure an interesting game.

10



between the tee and the fairway; it is fairway from tee to green. The course is skillfully bunkered, the greens, in some instances, almost diabolically trapped, but because these hazards have been designed to penalize the low handicap player who is off line on his drives or short on his approaches, the average golfer who is in Seventh Heaven if he breaks a hundred, can have a grand time at Jasper. The course is always in perfect condition. The Greenskeeper has been awarded the highest honor in its power to bestow by the P.G.A.—Life Membership in the Greenskeepers' Union—because of the unfailing excellence of his greens and fairways.

There are three water holes. One is the tenth and the water there is filled with speckled trout who do their best to disturb a tee shot by leaping about in the pool. The second is the fourteenth, a tricky drive across an arm of Lac Beauvert. The third is the sixteenth where the green is trapped by an inlet of the same lake and except in rare instances is out of sight from where an approach shot is being played.

There are other hazards, too, none of them designed by the architect who mapped the course. At any moment a bear or two may saunter from the woods and meander across the fairway. A deer and fawn or even an elk, now and then, may block an approach shot to the green and the player who lands in the rough may have to shoo a porcupine up a tree before he can make a recovery. Occasionally, beaver prove an added distraction at the fourteenth and sixteenth water holes, and a Cow bird or Buffalo bird hopping nonchalantly across your line of drive may increase the difficulty of a drive from several tees, notably the seventh and eighth. But at least there will be some consolation in knowing that such hazards don't exist on any other golf course

Names and yardage of holes on Jasper Park Lodge course follow:

No. 1	First	385 yds.	Par 4
No. 2	Old Man	475 yds.	Par 5
No. 3	Signal Dip	425 yds.	Par 4
No. 4	Cavell	245 yds.	Par 3
No. 5	Miette	450 yds.	Par 4
No. 6	Whistlers	410 yds.	Par 4
No. 7	Colin's Clout	185 yds.	Par 3
No. 8	Tekarra's Cut	430 yds.	Par 4
No. 9	Cleopatra	215 yds.	Par 3
No. 10	The Maze	495 yds.	Par 5
No. 11	Pyramid	395 yds.	Par 4
No. 12	Tête Jaune	175 yds.	Par 3
No. 13	Grande Allée	600 yds.	Par 5
No. 14	Lac Beauvert	355 yds.	Par 4
No. 15	The Bad Baby	150 yds.	Par 3
No. 16	The Bay	360 yds.	Par 4
No. 17	The Climber	375 yds.	Par 4
No. 18	Home	455 yds.	Par 4

Total 6580 yds. Par 70

and that if you wait long enough they'll move away of their own accord. That's more than can be said of a bunker.

While every week at Jasper is a great golf week, Totem Pole Week is the greatest of all. This is scheduled always for early September and it attracts one of the friendliest crowds of people to be found under one roof anywhere at any time. That week the Lodge is like a club and everyone has a grand time whether he plays or merely talks a good game. Principal event of the week is the championship flight for the Totem Pole Trophy, one of the most unique prizes offered for tournament play in the world. But that is only one of many events. For four of the seven days of the tournament every competitor, man or woman—and there is a wide selection of events for women—has a chance for a prize. In that particular also, golf at Jasper differs from golf elsewhere.



A map showing layout and contour from tee to green, helps you plan your play of the hole.

A PART FROM THE COLUMBIA ICEFIELD HIGHWAY, which is presented in detail on pages 18 to 21, there are a number of attractive motor routes in Jasper National Park. These roads have an approximate length of 200 miles within the park proper and several extend beyond it.

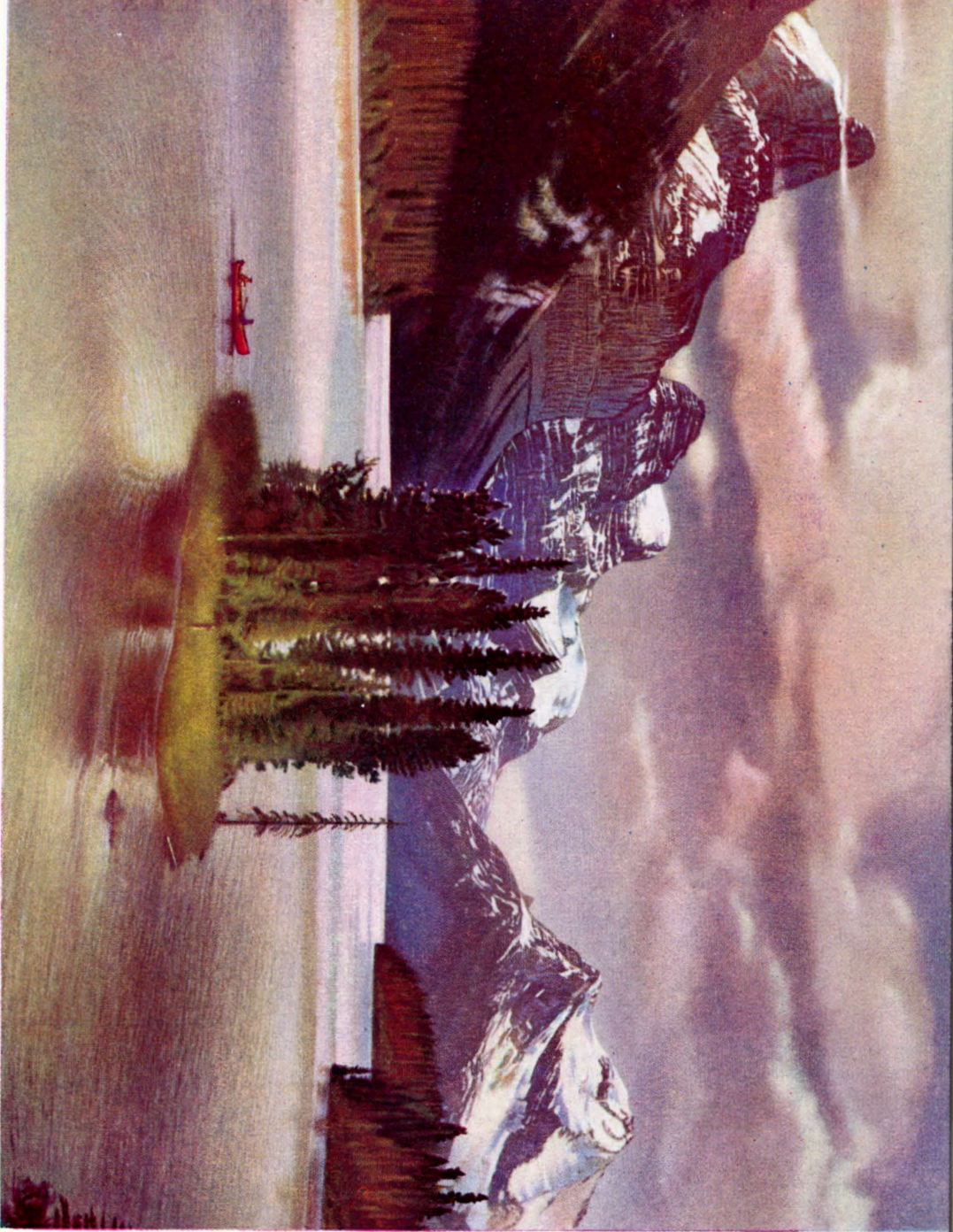
Deservedly popular is the drive to Mount Edith Cavell. Starting at the Lodge, this road rises several thousand feet in its length of twenty miles to the foot of the glacier which clings to the breast of the peak. Four rivers, the Athabaska, Miette, Astoria and Portal Creek are crossed during the trip. The views up the Whirlpool River Valley and both up and down the Athabaska Valley are particularly fine.

The drive to Punch Bowl Falls and Miette Hot Springs is another favorite. This highway hugs the Athabaska River most of the way down the valley, following a route that is important historically and which provides continuous views of large numbers of striking peaks. It offers, also, probably the best animal pictures to be had on any motor drive.

An interesting drive from the Lodge is that known as "General Drive" to Maligne Canyon, a wide, deep chasm into which the Maligne River drops almost out of sight, thence to the foot of Pyramid Mountain, and through Jasper town on the return.

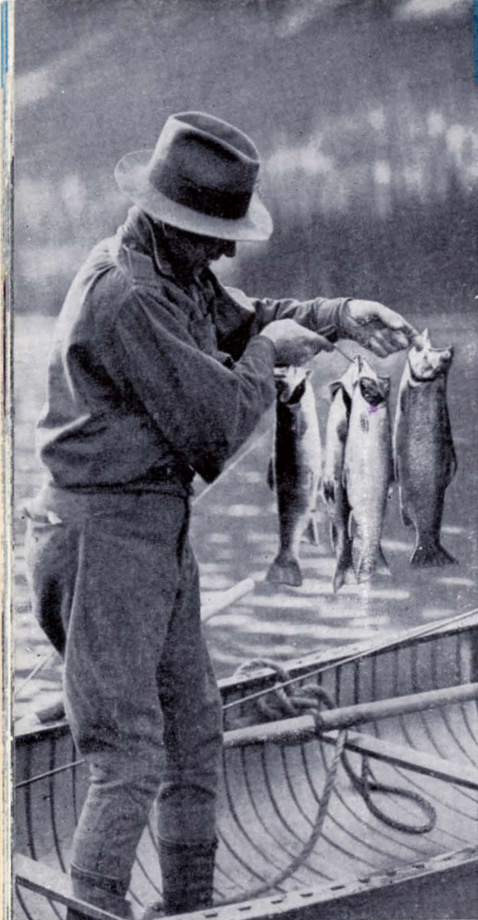
(Further detailed information on pages 30 to 32, 42)





MALIGNE LAKE

Maligne, largest glacial lake in the Canadian Rockies, belies its name. Serene and lovely, it extends eighteen miles from Maligne Lake Chalet. On either side and rising sheer 10,000 feet or more, are majestic peaks—Sampson, The Thumb, Charlton and Unwin, Warren, Mary Vaux, whose charm artists try in vain to picture. The widened trail from Medicine Lake now serves as a road, making it possible to reach Maligne Lake comfortably in a horse-drawn surrey, or, if preferred, astride a mountain pony. From Jasper Park Lodge to Medicine Lake the journey is made by motor.



THIGHT LINES AND HAPPY LANDINGS! That's a toast that anglers realize in Jasper—for here is a plenitude of game fish—trout of various species, Eastern Brook, Dolly Varden and Rainbow—in waters particularly suited to them, cold glacial lakes and tumbling mountain streams. And between casts even the most ardent sportsman may pause to marvel at his surroundings, for no other region on the continent offers a more arresting combination of woods and water and lofty peaks.

The Maligne region is noted for the sport it offers. Here Eastern Brook (speckled) Trout were planted a number of years ago and now they are found in Maligne and nearby lakes and in the Maligne River where pools and white water alternate over its length of ten miles from the pool at the outlet of Maligne Lake to where it empties into Medicine Lake. If added inducement were necessary it is found in the Gold Button of the Maligne River Anglers' Club, awarded for the year's largest Speckled Trout taken with the fly.





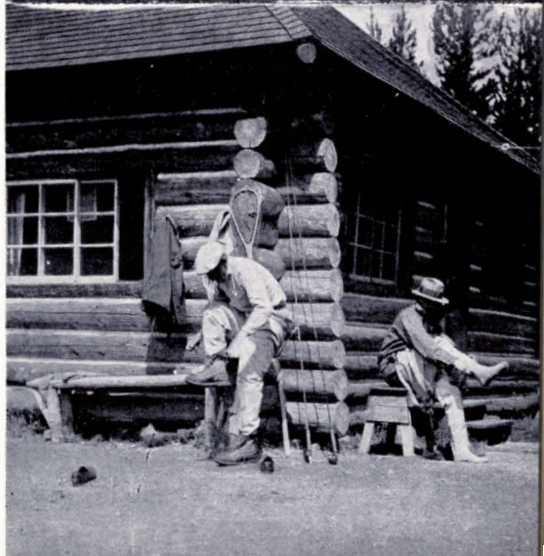
Jasper's well stocked lakes and streams afford excellent fishing for Dolly Varden, Speckled and Rainbow Trout. Note these catches from Tonquin and Maligne waters.

In Jacques Lake Dolly Varden trout are found, and in a number of lakes in the Athabaska Valley are Rainbows and Speckled Trout. Rainbow Trout are also taken in Hardisty Creek, but the best fishing for this fighter is to be had in Tonquin Valley waters, Amethyst and Moat Lakes and connecting and feeder streams. Fish here run up to three pounds in weight. This region is reached by motor and trail from Jasper and rare sport is assured.

These mountain trout are susceptible, as are all their brothers wherever they may be found, to the vagaries of wind and the barometer but normally they strike the flies used in lower altitudes.

A permit is required for fishing in Jasper National Park. This can be obtained from the Park Wardens at cost of \$2.25 per person. Arrangements for fishing trips can be made in advance, or at the Transportation Desk in the Main Lodge after arrival at Jasper.

Further detailed information on page 37.



TRAIL RIDING

OUTSTANDING among numerous trail trips available at Jasper is the Columbia Skyline Trail, a seven day trip that begins at Camp Parker about eight miles south of the Athabaska Glacier and then cuts through the wild, back country of the Rockies for ninety miles to the Lodge. Six days are spent in the saddle and one day at the Maligne Lake Chalet. *See page 35 for additional information.*

Most of the route is at an elevation of some 6000 feet and several times the trail crosses the ridges of high passes at an elevation of nearly 9000 feet. Permanent camps have been established along the route at points approximately 15 miles apart so that no day's ride is too arduous.

Much of the trail lies above timber line, in wide alpine meadows where many varieties of flowers bloom in great profusion. In Nigel, Jonas and Poboktan Passes, the trail climbs slowly to the high crests which mark the dividing line between the southern and northern slopes and from these skylines vast panoramas are unfolded to the eye.

16





Astride or afoot on the trails, through the passes and along the skyline, the mountains become more impressive, more intimate.

The final day's ride carries one across the knifelike ridge of a shoulder of Mount Tekarra from which it is possible to see nearly 100 miles in three directions, and finally to the top of Signal Mountain at whose feet is spread the wide expanse of the lower Athabaska Valley.

Among the short saddle trips, the new Jasper Park Lodge Circle Ride, 12 miles in length, encircling the Lodge area, is the most popular. It follows along the Athabaska River, through pine and alder groves and up over a shoulder of Old Fort Point to gain a marvellous panoramic view of the broad valley, the golf course and the surrounding mountains. The trail is broad enough for three riders to ride abreast; rocks and roots have been removed over the entire distance, and a portion of the trail has been covered with a special sawdust coating which assures a dustless and pleasant ride. Excellent saddle horses are available, and a choice of English or Western saddle. "Breakfast rides" and trail picnics are arranged; a hot meal is cooked and eaten on the trail.

Many other saddle trips may be enjoyed in the vicinity of Jasper.



COLUMBIA ICEFIELD

THE COLUMBIA ICEFIELD, one of the most stupendous sights of the world, is the largest accessible glacial deposit on the continent south of the Arctic. It strews itself in splendid disarray over 110 square miles of mountain area and from its breast bounteous life pours forth to give being to streams which, choosing three separate pathways, nurture three great rivers, each flowing to a separate sea.

Few of the thousands of tourists who visited the mountains had been able to see this impressive area until the completion of the motor road from Jasper. Now anyone who wishes to do so may cover, in a few pleasant hours, the distance between Jasper and the Athabaska Glacier, in the heart of the Icefield, which previously required a ten day trip in the saddle.

It is wild and gorgeous country this new motor road traverses from Jasper. No highway anywhere affords such an overwhelming burst of grandeur as does this, as, 70 miles south of Jasper, it swings past the Athabaska, Snow Dome, Kitchener and other glaciers, whose long hoary fingers hold the mountain fast within their frigid grip. It is a truly astonishing sight.

The route of this highway begins in tranquility. Leaving the Lodge it follows the Mount Edith Cavell road a little way and then bends gently downward through an avenue in the forest to the centre of the valley where the wedding of the waters of the Athabaska and Whirlpool Rivers takes place. It follows, for a distance, up the Whirlpool, then crosses the height of land to join the Athabaska again.



Here is sensed, for the first time, the turmoil of Nature that is to come, for at this point the Athabaska, in one mad turbulent leap, hurls itself a hundred feet or more into a chasm. Continuing, deep quiet woods enfold the road again until it comes upon the Sunwapta River where its waters leap into space even more madly than those of the Athabaska.

From there the road climbs gradually to timberline. Following the Sunwapta to its source, the highway enters a vast amphitheatre hemmed by giant peaks, Diadem and Woolley, both over 11,000 feet, Mount Stutfield, 11,320 feet, and Mount Kitchener, 11,500 feet, whose walls rise sheer to its lofty crest,—sky-shattering peaks whose gleaming crests provide a promise of the beauty that is to come.

Out of this great bowl there seems to be no escape for the road. Its way appears to be blocked by an impenetrable wall of rock but it eludes this barrier by switch-backing through the forest and emerges to present in all its startling reality the incredible pageantry of the Columbia Icefield.

Where, before, isolated ice caps were to be seen upon the mountains, now gigantic glaciers invade the valley, sweep up the slopes and, in an



The new Columbia Icefield Drive attains its spectacular climax at the foot of the Athabaska Glacier in Jasper National Park.



Natural Color Photograph

This impressive view of the vast ice cap seen from the Columbia Icefield Drive along the Sunwapta River, north of the Columbia Icefield Chalet, is one of the many breath-taking sights enroute from Jasper Park Lodge.



Top:—Snow Dome Glacier
Centre:—Athabaska Falls
Bottom:—Sunwapta Falls

ecstasy of triumph, plant their gleaming standards on the crests. It is a sight which no one who has seen it will forget. To the right, a sheer precipice of ice, hundreds of feet thick, covers the whole top of Snow Dome. Nearby, a river of ice is draped like a silver cape over the shoulders of Mount Kitchener. Everywhere the eye looks, gleaming peaks pierce the sky.

But it is ahead that the full glory of this matchless view is unfolded. There facing the new Columbia Icefield Chalet stands Mount Athabaska. From its peak to its base it is covered with a tremendous glittering glacier so tremendous in its scope that it is breathtaking. From the far reaches of the great Columbia Icefield this glacier stems, sweeping across the crest of the mountain, surging like breakers against its slopes, then forming itself into a huge, solid mass to advance in a wide, sweeping curve into the valley.

Five miles beyond the Athabaska Glacier the road crosses the southern boundary of Jasper National Park and continues to Lake Louise, a distance of 71 miles. Thus the Columbia Icefield Drive may be enjoyed as a motor tour from Jasper Park Lodge, or, as indicated on page 43, it may be incorporated in a round trip rail and motor tour of Jasper and Banff National Parks.

See page 31 for additional information.



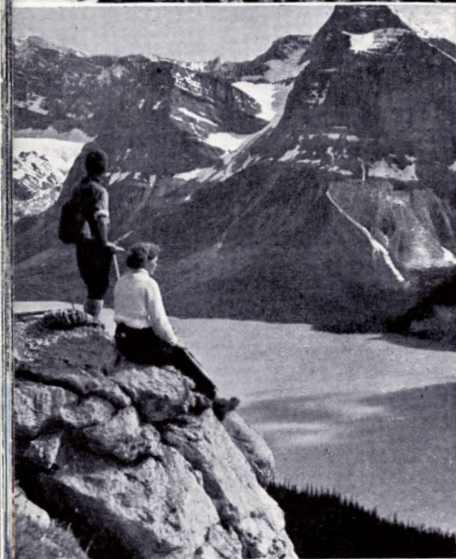
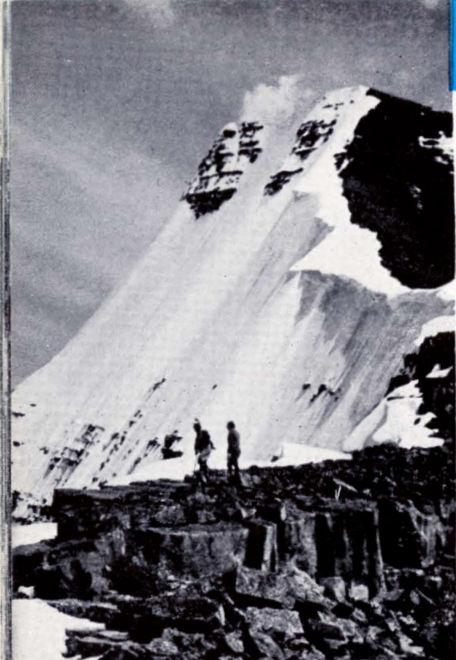
JASPER PARK offers an almost bewildering choice to the Alpine climber. Over seventy per cent of the highest peaks in the Canadian Rockies are found either within the boundaries of the Park or can be reached with Jasper as a starting point.

For many years, even prior to the time when it was set aside as a national playground, the peerless possibilities of Jasper for mountain climbers have been recognized and most of the world's outstanding alpinists have, at one time or another, visited the Park. In some instances they have come as individuals and in others as groups and the effect of their achievements is noticeable in the nomenclature of the area.

However, it will be many years before the mountain climbing possibilities of Jasper have been explored fully. While hundreds of peaks have been scaled there are many hundreds upon whose crests no man has yet set foot and while many of the mountains are named, there are still many which are not. Particularly appealing to alpinists are those sections of Jasper which may be described roughly as the Columbia Icefield, the Whirlpool River sector, the Tonquin Valley and the Maligne Lake district. All of these areas have something different to offer the mountaineer.

Providing sufficient notice is given, experienced guides will be obtained for parties desirous of mountain climbing.

Alpinists find in Jasper National Park unscaled peaks to tax their skill and courage.



BIG GAME AND CAMERA HUNTING

TODAY, many people think it is more fun to hunt with a camera than with a rifle. For those who are so disposed there are camera trophies without number to be had in Jasper. This playground is also a game reservation and its friendly boundaries provide a haven for many types of wild animals, from perky little rock rabbits—the only animal in the world to cure its own hay—to inquisitive, nomadic caribou; from industrious beaver to foraging grizzlies; from soft-eyed deer to wary mountain goat. In between can be included marmots; big horn sheep; coyotes; moose; elk; black and brown bears; squirrels; chipmunks; and the smaller fur bearers: the martin, otter, fisher and mink.

The varieties of birds are equally numerous. Infinite numbers of flowers are everywhere. All about is

superb scenery. Already one world's champion amateur motion picture has been made in Jasper. There are many more to be taken.

The natural overflow of wild life into the unprotected areas beyond the boundaries of the park make Jasper one of the most popular jumping off points for big game hunters. Some of the finest heads on view in several of the large Museums of Natural History in the United States were secured by sportsmen hunting out of Jasper.

Game animals may be seen from the trails and motor roads in this vast game sanctuary. Below: Mountain Goat, Mountain Sheep. Right: Mule Deer, Caribou, Beaver.





Top—One-Suite Cabin Bottom—Outlook Cabin



Jasper Park Lodge stands Lac Beauvert, a jewel in

The Lodge consists of a large main building containing the administrative offices and the public rooms, and from it the bungalows radiate in fan formation along paved walks that are generously and attractively landscaped. The bungalows vary in size from one suite to sixteen

Simple decorative effects feature the bedrooms.





Natural Color Photograph

on the shore of beautiful
its magnificent setting.

rooms. All are complete in every detail with telephone, electric light, heat, hot and cold running water in every room. Most of the rooms are equipped with bath or shower and there are one or more detached baths in every bungalow.

Main Dining Room



Top—Two-Suite Cabin.

Bottom—Point Cabin



JASPER PARK LODGE—GENERAL INFORMATION

TIME—Jasper Park Lodge follows Mountain Standard Time.

Altitude—3,470 feet.

Area—Jasper National Park—the largest in America—is 4,200 square miles.

Baggage—*Incoming Baggage*: In order to avoid delay, baggage should be checked from starting point direct to Jasper Park Lodge. Guests are requested to present their baggage checks to the Lodge porter immediately on arrival at Jasper Station.

Outgoing Baggage: Guests who wish to check baggage should present rail tickets to the Head Porter two hours before the departure of their trains. Those who have only hand baggage to check should, in order to ensure its proper handling, secure tags from Head Porter.

Banks—The Imperial Bank of Canada maintains a branch office in Jasper.

Barber Shop, Shoe Shine Parlour and Beauty Parlour are located in the Main Building.

Breakfast Rides and Steak Dinner Parties—One of the most attractive of the many social features at the Lodge, are the early-morning breakfast rides,—organized by the Social Director and held each week throughout the summer season.

At 7.30 a.m. the riders meet at the Lodge mounting square, ride the trails chosen for that day, and reach the meeting-place about an hour and a half later. There, on some beautiful mountain slope, with appetites sharpened by the brisk morning air, they partake of an informal breakfast, tastily prepared and served piping hot from an outdoor fireplace.

Along similar lines the Social Director arranges picnic and supper parties. The camp grounds selected are generally within easy reach by motor-car, and those who do not care to ride may motor to the rendezvous.

Camera Supplies—See "Film Developing Service" and "Novelty Shop".

Church Services—Church services for various denominations are held every Sunday in the village of Jasper:

Anglican — 8.00 a.m. and 11.00 a.m.
Roman Catholic — 8.00 a.m. and 10.00 a.m.
United Church — 11.00 a.m.

Free transportation is furnished to guests of the Lodge. Buses leave the Main Entrance at 7.45 a.m., 9.45 a.m., and 10.45 a.m.

Customs—A Canadian Customs Officer is located at Jasper Park Lodge to facilitate the clearing of baggage of visitors from the United States.

Dancing—The Lodge orchestra provides dinner and evening concerts, also dance music from 9 to 12 o'clock each night, except Sunday.

Film Developing Service—Films left at the Novelty Shop before 9.00 a.m. will be returned the same day at 6.30 p.m.

Express Service—Canadian National Express is represented at Jasper and express service is available for shipments to and from all points in Canada, United States and Great Britain.

Guides for Mountain Climbing—Provided sufficient notice is given, experienced guides will be obtained for parties desirous of mountain climbing.

Laundry—One-day service.

Library—A Lending Library is operated in connection with the Specialty Shop.

Masseur—A modified Therapeutic Department, with a graduate Therapist in charge, is operated in connection with the Lodge.

Medical Service—The services of a physician are available at all times, and a graduate nurse is in constant attendance.

Money Orders—Money Orders are on sale at the Front Office.

Motion Pictures—A motion picture entertainment is given in the ballroom from 8 to 9 o'clock each evening, except Sunday.

Novelty Shop—A complete line of souvenirs, post cards, camera supplies, coloured glasses, fishing tackle, etc., may be purchased at the Novelty Shop, which is operated in connection with the CIGAR and NEWS STAND. See also "Specialty Shop".

Park Administration—The administration of Jasper National Park is under the control of the Department of Mines and Resources through the National Parks Bureau, Ottawa, Ontario. The Superintendent of the Park makes his headquarters in Jasper.

Passenger Representative—A Canadian National Railways General Agent is located at the Lodge. He will assist guests in all matters pertaining to tickets, train and boat reservations, etc.

Picnic Parties—Picnic parties can arrange for basket lunches. See also "Breakfast Rides and Steak Dinner Parties".

Royal Mail Service—Daily Royal Mail service to and from Jasper Park Lodge. Mail should be addressed in care of Jasper Park Lodge Post Office, Alberta. Guests are requested to leave their forwarding address before departure.

Safety Deposit Boxes—Safety Deposit Boxes are available to guests for the safe-keeping of money and valuables; apply at the Front Office. We do not accept responsibility for money or articles not so deposited.

Social Hostess—A Social Director is on the staff throughout the entire season.

Soft Drinks and Light Refreshments can be purchased at the Golf Club House and in the Snack Room of the Main Building.

Telephones—Long Distance Telephone connections can be made direct from bedrooms.



Natural Color Photograph

The Jasper Park Lodge golf course ranks among the world's truly great courses. Its velvet greens, water hazards and skillfully planned bunkers inspire both par golfer and average player. Gently undulating fairways and the lovely alpine setting make for well-nigh perfect golf.

JASPER PARK LODGE

— Details of —

**COST, TIME FOR MOTOR TRIPS,
TRAIL TRIPS, GOLF, ETC.**

Specialty Shop—An up-to-date Specialty Shop is located in the Main Building, and carries a full line of imported woollen goods, hand-woven articles, blankets, china, costume jewellery, ladies' sportswear, and an exclusive line of gentlemen's sportswear, sweaters, socks, ties, etc. See also "Novelty Shop".

Telegrams—Canadian National Telegraphs, connecting with the Western Union Telegraph Co., maintains an office at the Lodge. A complete, world-wide telegraph and cable service is available. In addition, a telegraphic money order service is furnished; also the latest market reports on stocks, bonds, and commodities, from the leading exchanges of the world.

Temperature—The average daytime temperature ranges from 65 to 75 degrees F. The nights are always cool.

U.S. Funds will be accepted in payment of Hotel Accounts at the rate of exchange set by the Canadian Foreign Exchange Control Board.

Valet—Ladies' and gentlemen's valet service.

Walking or Hiking Parties can obtain full information about trails, etc., at the Trail Riders' Desk in the Main Building.

SITUATED on the pine-girt shores of Lac Beauvert, Jasper Park Lodge, in America's largest National Park, has every facility for the entertainment of its guests. Among these are horse-back riding, mountain climbing, hiking, motoring, golfing, tennis, boating, canoeing, fishing, swimming, dancing, motion pictures, bridge, and table tennis.

The details of all activities in Jasper National Park and at Jasper Park Lodge are described in the following pages. Further information may be obtained at either the Motor Transportation Desk or the Trail Riders' Desk in the Main Building.

GOLF

Arrangements for golfing on the Jasper Park Lodge Course can be made at the Golf Club House, which is situated 300 yards from the Main Building. A professional of the highest standing as player, instructor, and club maker, is in attendance. Golf equipment is available for sale or for rent.

WHAT TO WEAR

At the Lodge—The question of what to wear is entirely a matter of personal desire; no set rule is followed. While some ladies wear formal dress for dinner and dancing, others dress informally. Gentlemen usually wear flannels and sack coat; dinner jackets are seldom worn.

Because of the altitudes of Jasper National Park, the summer evenings are usually cool. To ensure comfort, visitors should bring with them a medium-weight Spring and Fall coat, or wrap.

For Motoring—In addition to a medium-weight coat or wrap, gloves, and coloured glasses add to the comfort of a drive. Low-heeled shoes are recommended for those who wish to explore points of interest at the scheduled stops along the drives.

For Riding or for Trail Trips—It is very important that visitors who intend to hike or ride the trails bring with them suitable clothing, including riding or hiking boots, woollen stockings or socks, woollen jacket or sweater, heavy breeches, flannel or mackinaw shirt, slicker, gloves, and suitable hat or cap. On camping trips, personal effects are limited to 20 pounds per person. Regular camping equipment, supplied by the Outfitter, does not include personal accessories, such as towels, soap, slickers, etc. No responsibility will be assumed for the loss of valuables or personal equipment on the trail.

RATES FOR GOLF	Per Person	Family Rates	
		First Person	Others (each)
18 holes.....	\$ 2.00	\$ 2.00	\$ 2.00
Per day.....	3.00	3.00	1.50
Per week.....	12.00	12.00	6.00
Per month.....	45.00	45.00	22.50
Per season.....	75.00	75.00	37.50

Caddie Fees

Class A—18 holes.....	.75
Class B—18 holes.....	.50

GOLF WEEK

August 31st to September 6th, 1941

For special All-inclusive Rates from all points in Canada and the United States, see folder dealing with Sixteenth Annual Totem Pole Tournament.

In addition to the special All-inclusive Rates, shown in the folder dealing with the Sixteenth Annual Totem Pole Tournament, a special rate of \$9.00 a day per person (for room, meals, and golf) will be in effect as follows:—

(a) **Available ONLY to guests booking on the all-inclusive plan for the entire Tournament:**

For any day or days from August 24th to August 30th inclusive.

(b) **Available to any guests:**

For any day or days from the close of the Tournament, up to and including the closing date of the Lodge, i.e., from September 7th to 15th inclusive.

SCENIC FRESH AIR MOTOR DRIVE—Through-passengers on trans-continental trains who are unable to stop over at Jasper can visit Jasper Park Lodge during the lay-over of trains at Jasper Station. This will give them an opportunity of getting some fresh air and of seeing this world-famous mountain resort. Motor equipment, owned and operated by Canadian National Railways and marked "Jasper Park Lodge", will be at the station. Conductors or any train employee will make seat reservations. A charge of 50c. per person is made for the round trip.

Trains will not depart from Jasper Station until all motor equipment, marked "Jasper Park Lodge", returns from this special drive.

SWIMMING POOL

The swimming pool is a very popular attraction to guests of the Lodge. The crystal-clear glacial water is filtered and heated, and is constantly changing. A competent swimming instructor is in attendance, with whom arrangements can be made to take swimming and diving lessons. The use of the pool is given free to guests of the Lodge; bathing suits can be rented at a charge of 25¢ each. Dressing rooms are equipped with showers.

BOATING

Paddling on Lac Beauvert is a favoured evening enjoyment. Boats and canoes are available for rent at 50 cents per hour.

TENNIS

Four hard-surfaced courts are available to guests free of charge. Guests should bring their own racquets. Tennis balls on sale at the Novelty Shop.

TABLE TENNIS

Sets are available in the Main Building, in the Golf Club House, and at the Swimming Pool.

AUTOMOBILE SIGHTSEEING DRIVES AND OTHER MOTOR SERVICES

Arrangements can be made at the Motor Transportation Desk in the Main Building of Jasper Park Lodge for all scheduled and special motor trips.

The automotive equipment at Jasper Park Lodge consists of luxurious passenger automobiles and buses. The chauffeurs, besides being experienced drivers, are also versed in the history and lore of the Park. They thus make thoroughly competent guides, whose knowledge and experience add much to the journeys along these historic trails.

Guests holding drive coupons are requested to present them at the Motor Transportation Desk and make their trip arrangements as soon as possible after arrival.

Special private touring cars will be operated on any regular drive (except No. 6, Columbia Icefield, for which a minimum of 5 full fares is required), when cars are available without interrupting or interfering with regular services. Rates are based on a premium of two extra fares, plus a seat fare for each actual passenger, with a minimum of two passengers. For example:

1 or 2 passengers	pay 4 fares
3	" " 5 "
4	" " 6 "

Half fare for children under twelve years on all motor drives.

SIGHTSEEING MOTOR DRIVES

NOTE: Starting point of all sightseeing motor drives—Main Entrance, Jasper Park Lodge.

Departure hours and schedules for these drives have been carefully planned to permit visitors to view without haste the scenic wonders of the Park.

No. 1: General Drive—Twenty-eight miles return. Motors leave the Lodge at 10.00 a.m. and 3.15 p.m. Time, approximately 2½ hours. Cost per person, \$3.00. This drive embraces a wide variety of valley, lake, canyon, and mountain scenery. The route, after following the Athabaska River, skirts Lakes Annette and Edith before gradually ascending the roadway to Maligne Canyon. From this vantage point the tourist stands in awe before the snow-capped grandeur of lordly mountains and the mighty sweep of the Athabaska Valley, which loses itself in endless vistas of Alpine beauty. Maligne Canyon, a tremendous gorge descending to a depth of 188 feet, and remarkable for its potholes, is a never-ending source of wonder and amazement. On the return journey the tourist again meets the Athabaska River and crosses it to join the Main Highway to Jasper, where he gets a glimpse of "the Raven", one of the largest totem-poles in existence. Continuing along to the foot of Pyramid Mountain and passing en route Lakes Patricia and Pyramid, the drive again runs through Jasper before terminating at the Lodge.

No. 2: Maligne Canyon—Twelve miles return. Motors leave the Lodge at 10.00 a.m. and 3.15 p.m. Time, approximately 1½ hours. Cost per person, \$2.00—This canyon, where the Maligne River plunges through a gorge 188 feet deep, ranks among the most extraordinary and interesting in the Canadian Rockies. The route lies over a gradually ascending roadway from which the tourist obtains magnificent views of lordly mountains and charming vistas of the Athabaska Valley.

No. 3: Punch Bowl Falls—"A Twilight Drive"—Sixty miles return. Motors leave the Lodge at 7.00 p.m. Time, approximately 3 hours. Cost per person, \$3.50—The route is over the Athabaska River, and follows the completed

section of the new Inter-Provincial Highway to Punch Bowl Falls and Valley. This trip affords a very wide variety of mountain scenery and is highly recommended as an evening drive. At this time of day (after sunset) the animal life frequent the numerous lakes and streams in this region, and it is usually possible to see sheep, goats, deer, bears, moose, etc., from the motor-car. Return to the Lodge in ample time to enjoy dancing, bridge, etc.

No. 4: Glacier of the Angel (Mount Edith Cavell)—Forty miles return. Motors leave the Lodge at 9.30 a.m. and 3.15 p.m. Time, approximately 3 hours. Cost per person, \$4.00—This drive affords good motoring and, by a course of wide-sweeping switchbacks, reaches an altitude of nearly 2,000 feet above the floor of the valley and gives the tourist an ever-changing series of striking and beautiful panoramas. The highway terminates at the foot of the famous glacier and affords an excellent view of this great field of living ice. Light lunch and refreshments can be obtained at the Tea Room near the foot of the Glacier.

No. 5: Miette Hot Springs and Fiddle River Canyon—Eighty miles return. Motors leave the Lodge at 9.00 a.m. Time, approximately 4 hours. Cost per person, \$6.00. The route, after skirting the shore of Lake Mildred, follows the Athabaska River, which it crosses to join the Inter-Provincial Highway, whence it extends for miles down the floor of the Athabaska Valley to Jasper Lake and beyond to Punch Bowl Falls, where a stop is made to view this unique waterfall. From here it follows the rim of the Fiddle River Canyon for another eleven miles, finally reaching the famous Miette Hot Springs. At this point, hot sulphur spring water, varying in temperature from 79 to 128 degrees F., comes boiling out of the mountain side. Motors will remain long enough to permit bathing in the pool.

The Miette Hot Springs consist of three main springs which issue from the rocks along the banks of Sulphur Creek for a distance of a few hundred yards. The springs are not volcanic in character, but owe their heat to chemical action, caused by surface water coming in contact with certain minerals in the rock formation, which is principally limestone. The combined flow of the three springs is approximately 170,000 gallons every 24 hours.

The Swimming Pool and the Steam Baths at Miette Hot Springs are operated by the National Parks Department. The rates are:

Swimming Pool—When bathing suit and towel are supplied by the Department: adults, 35c.; children, 25c. When bathing suit and towel are supplied by bather: adults 25c.; children, 15c. Steam and Plunge Baths—50c. per person.

No. 6: Columbia Icefield (Jasper-Banff Highway)—One hundred and fifty miles return. Motors leave the Lodge at

9.00 a.m. Time, approximately 7 hours. Cost per person, \$10.00. Minimum, 5 persons. A picnic lunch will be served en route; this is free of charge to passengers who are guests of Jasper Park Lodge. This drive follows the route of the Mount Edith Cavell Drive to a point beyond the crossing of the Astoria River, whence it continues along the valley of the Athabaska. From here the route is through the very heart of the Canadian Rockies to the largest and most impressive icefield outside the Arctic Circle. "Mother of Rivers" it is called. The waters of its melting glaciers travel thousands of miles to three oceans,—the Atlantic, the Pacific, and the Arctic. The area of this icefield is estimated at 110 square miles and the average elevation is between 9,000 and 10,000 feet.

The Station Agent at Jasper will make arrangements for railway patrons, who are not guests of the Lodge, to be taken from the station, in motors marked "Jasper Park Lodge", on any of the scheduled drives Nos. 1 to 6, inclusive. Regular rates will apply. A stop will be made at the Lodge.

SPECIAL MOTOR SERVICES

Medicine Lake—Beaver Lake—Lower Maligne River. Provided arrangements are made at the Motor Transportation Desk before 9.00 p.m. the evening prior to departure, anglers who wish to fish these waters can leave Jasper Park Lodge at 9.30 a.m., and leave Medicine Lake on return at 7.00 p.m. For this service a charge of \$5.00 per person, minimum two persons, will be made. Should a party wish to make the trip at any time other than the foregoing, an extra charge of \$5.00 for one person, and \$2.50 each for two or more persons, will be made. **If boats, guides, fishing tackle, etc., are required, notice must be given at the Motor Transportation Desk before 9.00 p.m. the evening prior to departure.**

Picnic Parties—When available, special buses will be operated, by arrangement, to picnic sites. Cost per person, \$1.00 for the round trip. Minimum charge, \$10.00 per round trip.

By arrangement, touring cars, if available, may also be engaged for this service at special rates.

Trips to Jasper—In addition to the scheduled bus trips to Jasper, cars, when available, may also be obtained at the following rates: one to three persons, \$2.00; each additional person, 50c.

Shopping Bus—To Jasper and return; operates daily (except Sunday) at 10.30 a.m. and 3.30 p.m. Cost, 50c. per person.

Theatre Bus. To Jasper each evening, except Sunday; returns after the show. Cost, 25c. per person.

Private party theatre bus may be arranged for at a rate of 25c. per person; minimum charge, \$3.50.



TAXI SERVICE—Taxi Service within the Lodge area, e.g., to the Golf Course, to the Pony Barns, to see the bears, or to and from the cabins: 50c for each trip, irrespective of the number of passengers.

During inclement weather, free motor transportation is provided between the cabins and the Main Building.

Free motor transportation is provided each Sunday morning for guests who wish to attend Church Service in the village of Jasper. Buses leave the Main Entrance at 7.45 a.m., 9.45 a.m., and 10.45 a.m.

Motor Car Service is available at all times between 6.00 a.m. and 12.00 midnight, at regular tariff rates. After midnight, a charge of \$2.00 will be made for each car movement within the Lodge area, irrespective of the number of passengers; outside the Lodge area, special private car rates, as shown on page 30, will apply.

SADDLE TRIPS—TRAIL AND CAMPING TRIPS—GUIDE SERVICE

Official Outfitters—Fred Brewster's Rocky Mountain Camps Limited.

Arrangements can be made at the Trail Riders' Desk in the Main Building for all scheduled and special short saddle trips, also for trail and camping trips, and for guide service.

The horses are locally-bred and of good type, equipped with Mexican stock saddle or English riding saddle.

Saddle and camping trips to any point in this vast Park, for any duration of time or distance, can be arranged at the Trail Riders' Desk, where information regarding big game hunting outside the Park can also be obtained. The longer saddle trips can be planned with greater advantage as to cost, individual comforts, and tastes.

Saddle, trail and camping trips are contingent on good weather conditions.

Every effort commensurate with trail conditions will be made to maintain scheduled times of departure and arrival.

It is very important that visitors who intend to hike or ride the trails bring with them suitable clothing, including riding or hiking boots, woollen stockings or socks, woollen jacket or sweater, heavy breeches, flannel or mackinaw shirt, slicker, gloves, and suitable hat or cap.

On camping trips, personal effects are limited to 20 pounds per person. Regular camping equipment, supplied by the Outfitter, does not include personal accessories such as towels, soap, slickers, etc.

No responsibility will be assumed for the loss of valuables or personal equipment on the trail.

ALL-EXPENSE TRAIL TOURS

The Official Outfitters—Fred Brewster's Rocky Mountain Camps Limited—operate a series of All-Expense Trail Tours. Particulars of these can be obtained by applying to the nearest Passenger Agent of the Canadian National Railways.

GUIDE SERVICE

The management recommends that no mountain, saddle or hiking trip be made without the services of a guide. Parties who make trips without one do so at their own risk. The cost of a guide is \$1.50 per hour; \$3.50 per half day; \$6.00 per day. One guide is required for a party up to five persons; an extra one, for more than five persons. Guide charges are pro rata according to the number in the party.

The guides are fully qualified, experienced, and thoroughly dependable.

RATES FOR SADDLE HORSES

NOTE: For a horse or a guide, one day consists of not more than nine (9) hours, and not more than twenty (20) miles.

Mountain horses equipped with Mexican stock saddles or English riding saddle—\$1.50 for the first hour, \$1.00 for each additional hour; \$3.00 per half day, \$4.50 per day. Special rate of \$21.00 per week for reserved horses. Horses for mountain trips Nos. 7 and 8 as listed below, \$6.00 per day.

SHORT SADDLE TRIPS

NOTE: Slickers are not provided by the Outfitter.

Saddle Trip No. 1: Jasper Park Lodge Circle Ride—Graded to a breadth averaging from ten to fifteen feet and sufficiently wide for a party of three to ride abreast, this new bridle path, rendered dustless by a generous application of soft sawdust, forms a vast circuit, with the Lodge itself as a centre. The trail leads through Pine and Fir forests, by lake shore and river bank, skirts the golf-course, and ascends to the bench below Signal Mountain, offering from its different vantage points ever-changing vistas of the



Trail Breakfast—J.P.L. Circle Ride

charming Athabaska Valley. Unquestionably, this is the most beautiful and scenic ten-mile horseback ride on the Continent. Riding time, 3 hours.

Saddle Trip No. 2: Maligne Canyon—The route is over the back trails away from the motor roads and follows the Athabaska Trail, traversing the entire length of Maligne Canyon. A beautiful and easy ride of 12 miles return. Riding time, 3 hours.

Saddle Trip No. 3: Golf Course and Old Fort Point (Hudson's Bay Table Top)—The route skirts the greater part of the golf course, proceeds up the Buffalo Prairie Trail to the top of the ridge, and out on to Old Fort Point. This trip affords a splendid view of the Athabaska Valley, the Lodge, Mt. Edith Cavell, and the mountains on both sides of the upper river. Distance, seven miles return. Riding time, 2 hours.

Saddle Trip No. 4: Caledonia Lake—Fourteen miles return. This is a small lake lying on a rocky bench above the Miette River, west of Jasper, reached by passing through the village and following the Miette road to Cabin Creek Bridge. Here the trail to Caledonia Lake branches off and follows the left bank of Cabin Creek. Riding time, 3½ hours.

Saddle Trip No. 5: Pyramid Lake—Sixteen miles return. This trail leads the rider through the village of Jasper, ascends the hill to the north of the village, crosses the

Cottonwood Creek Valley, and then passes along the ridge above Pyramid Lake. Riding time, 5 hours.

Saddle Trip No. 6: Buffalo Prairie-Wabasso Lake—Twenty miles return. This is a good trail and the scenery is wonderful. Excellent fishing in the lake waters. Riding time, 5 hours.

ALL-DAY SADDLE TRIPS

Saddle Trip No. 7: Signal Mountain—Sixteen miles return. One of the most delightful of all the rides is to the top of Signal Mountain (altitude 7,400 feet). The view from here is superb, embracing the Athabaska Valley and the Yellowhead Pass.

Saddle Trip No. 8: Whistlers Mountain—Eighteen miles return. This is another wonderful trip. A good trail. This mountain is situated just above the junction of the Miette and Athabaska Rivers.

In addition to the eight rides described above, there are numerous other interesting rides. Full information may be obtained at the Trail Riders' Desk in the Main Building. For itineraries and costs of longer riding and camping trips, see Pages 35 and 36.

ACCOMMODATION AT CHALETS

These chalets are operated by the Official Outfitters, Fred Brewster's Rocky Mountain Camps Limited. Reservations can be made direct, or through the Manager of Jasper Park Lodge.

Tonquin Valley Camp, elevation 6,500 feet, is situated on the Amethyst Lakes, 25 miles from Jasper Park Lodge. There is comfortable accommodation for fifteen persons. Excellent Rainbow (Kamloops) trout fishing.



In advertising these services the Canadian National Railways act only in the capacity of Agents; while highly recommending the Outfitters to guests, they do not assume any legal responsibility whatsoever in connection with their services.



Maligne Lake Chalet

Shovel Pass Camp, elevation 6,800 feet, located in Shovel Pass basin at timber line, is of sound construction and provides comfortable accommodation for eight persons. Alpland hiking, rock climbing, mountain game, and flora. From this camp the visitor gets an excellent view of the Athabaska and Tonquin Valleys, also of the Rampart Range, including Mount Geikie, as well as of the Whirlpool Valley to the Continental Divide, and of the Columbia Icefield, far away to the south.

Medicine Lake Chalet, elevation 4,500 feet, situated at the upper (south) end of Medicine Lake at the point where the river enters the lake, is a log building containing dining-room, sitting-room, and sleeping accommodation for ten persons. Side trip to Beaver Lake—good fishing. Passenger lunch and good fishing-canoes are available at Medicine Lake.

Maligne Lake Chalet, elevation 5,500 feet, situated on Maligne Lake at the outlet to the river, comprises a central building 25' x 40', which contains the living-room with big, open fireplace, dining-room with a seating capacity of 20 persons, and a well-equipped kitchen. Along the front, and on one side, there is a spacious, screened-in veranda which affords a splendid view of the lake.

Sleeping accommodation at Maligne Lake Chalet is provided in a four-room cabin, and in heated canvas houses; accommodation for 20 persons.

The Four Room Cabin is constructed along the lines of those at Jasper Park Lodge and is similarly furnished; each room contains two single beds.

Modern Canvas Houses, with permanent wooden frames and floors, are 14 feet square, with 6 foot walls and 10 foot ceilings. Each is separately heated, amply lighted, and ventilated. The furnishings are similar to those of the four-room cabin, and include bureau.

two chairs, grass rug, bedside mats, washstand with plentiful supply of hot and cold water, and two comfortable single beds.

Complete bath and toilet facilities are provided in a separate building.

Comfortable beds, plain but appetizing meals, and courteous attention on the part of the staff in charge, guarantee the trail rider, angler, and other visitors, an enjoyable stay.

RATES AT CHALETS AND CAMPS

(American Plan—including meals)

Maligne Lake Chalet, Medicine Lake Chalet and Tonquin Valley Chalet are open from July 1st to August 31st. Shovel Pass Camp is opened when required. Provided sufficient notice is given, parties who wish to visit these camps in June or September can make arrangements to do so.

	Per Day	Per Week
Tonquin Valley Chalet.	\$6.00	\$35.00
Shovel Pass Camp.....	5.00	28.00
Medicine Lake Chalet..	5.00	28.00
Maligne Lake Chalet....		
4-room Cabin.....	8.00	49.00
Heated Canvas Houses..	6.00	35.00

Motor-boat service on Maligne Lake (34 miles return) \$4.00 per passenger.

MALIGNE LAKE

Among the unending variety of magnificent beauty spots in Jasper National Park, visitors will find Maligne Lake one of the most exquisite.

Maligne Chalet, commanding a full view of the lake whose name it bears, is situated on a low plateau at the outlet. Before the Chalet, and extending in a south-easterly direction for seventeen miles, with a breadth varying from two hundred yards to two miles and a shore line of some fifty miles, lies the largest glacial-fed lake in the Canadian Rockies.

Beginning with Mount Samson, (a jagged peak, ten thousand feet high, facing the Chalet on the left), the altitude of the peaks forming the Maligne group (Mounts Charlton, Unwin, Warren, Mary Vaux, and Maligne) increases until, in Mount Brazeau, it reaches a height of eleven thousand, three hundred and eighty feet.

The mountains rise precipitously from the lake and are heavily laden with snow and ice. At the south-west end of the lake, farthest from the Chalet, lies a snowfield of considerable size, and leading in a southerly direction towards the Brazeau River district, along the western base of Mount Brazeau, is a high, broad snow pass, affording easy access to this very interesting neighbourhood. The mountains in the Maligne Lake district are admirably suited to both ice and rock climbing, and many comparatively easy climbs may be successfully undertaken by the amateur.

The mountains, meadows, and flowers of the alplands will prove of great interest to the botanist and naturalist alike. Sheep, goats.

caribou, moose, and deer, frequent these pastures. The Opal Hills, facing the Chalet on the east, are the home of the sheep and the goat, while the mountain sides overlooking the lake, particularly those about the south-east, are used extensively by the mountain goat as a summer pasture.

What to do at Maligne Lake

The nature lover, the artist, those seeking relaxation in quiet surroundings, will find Maligne Lake a real haven.

Ride or hike to Maligne Pass, to the top of the Opal Hills, or to the haunt of the caribou at the summit of Bald Mountain.

Take canoe, rowboat, or outboard motor boat trips on the lake, also a scenic motor boat trip to the upper end of Maligne Lake, 34 miles return.

Fish for speckled trout in Maligne Lake, Mona Lake, and Maligne River.

Arrangements can be made for summer skiing by applying to Fred Brewster's Rocky Mountain Camps Limited.

TRANSPORTATION SCHEDULE TO MALIGNE LAKE

Leave Jasper Park Lodge at 9.30 a.m., motor to Medicine Lake, take motor boat across the lake to Medicine Lake Chalet, where a stop is made for lunch; with guide and saddle-horse proceed to Maligne Lake, arriving at 5.00 p.m. Those who do not wish to walk or ride between Medicine Lake and Maligne Lake may, at no extra cost, travel in a horse-drawn Surrey. The long evening, especially in the early part of the season, allows the fisherman two or three hours to catch a nice mess of trout for breakfast. The return journey is over the same route, leaving Maligne Lake Chalet at 9.00 a.m., and arriving at Jasper Park Lodge about 4.00 p.m.

Cost—Includes transportation as described above, luncheons at Medicine Lake Chalet, guide service, saddle-horse or sully, and transfer of luggage (20 lbs.)—\$18.50 per person. Charges for accommodation at Maligne Lake Chalet are extra. Motor boat trip on Maligne Lake, \$4.00 per person extra.

Should a party wish to make the trip at any other than the regular scheduled times, an additional charge will be made.

MALIGNE LAKE AND SKY LINE TRAIL TRIP

Saddle Trip No. 9: For those who enjoy riding at a high altitude, the return trip from Maligne Lake over the Sky Line Trail offers a new and exhilarating experience. *If snow conditions permit, this trip will be operated between July 1st and August 31st.*

First day—leave Jasper Park Lodge at 9.30 a.m., motor to Medicine Lake, take motor boat across the lake to Medicine Lake Chalet, where a stop is made for lunch; with guide and saddle-horses, proceed to Maligne Lake, arriving at 5.00 p.m.

Second day—rest at Maligne Lake and take scenic motor boat trip to the upper end of Maligne Lake (34 miles return).

Third day—leave Maligne Lake Chalet at 9.00 a.m. with guide and saddle-horse, cross Maligne River via the saddle-horse bridge, follow the Shovel Pass Trail over the north-east shoulder of Bald Mountain to the Evelyn Creek ford, and proceed up the long, easy slope to the summit of Little Shovel Pass at timber line. From the summit of Little Shovel Pass the rider gets a splendid view of four miles of alpland, which is traversed before making the last climb to the summit of Big Shovel Pass (8,000 ft.). On the banks of a small mountain stream, between the passes, a stop is made for lunch. An easy descent across the shale slopes brings the rider to the overnight camp at Shovel Pass.

Fourth day—the route leads upward from Big Shovel Pass to the skyline of the Maligne Range and for more than two miles the trail maintains an altitude of eight thousand feet. The high altitude and peculiar location of the trail present the rider in clear weather with a magnificent view of the mountains in all directions. Without doubt, this is the most comprehensive panorama obtainable from a saddle. From the skyline a short, rapid descent is made to the basin lying at the rear of Tekarra Peak. Here a stop is made for lunch; then the rider continues around the east and north base to the top of Signal Mountain, which overlooks Jasper Park Lodge and the Athabaska Valley. The descent from Signal Mountain to the Lodge is made over the regular Signal Mountain trail.

This is a four-day inclusive trip. Cost, including boat trip on Maligne Lake, \$58.00 per person.

This trip may be made by the reverse route, i.e., leave Jasper Park Lodge for Tekarra Basin, ascend the Sky Line to Big Shovel Pass for an overnight stop, then descend to Maligne Lake Chalet, etc.

Saddle Trip No. 10:—Columbia Icefield—Maligne Lake—Sky Line.

Seven-day combination motor-car, motor boat, saddle-horse, and camping trip. Depending on snow conditions, the first trip on or about July 1st.

First day—Leave Jasper Park Lodge at 8.00 a.m. and motor to Columbia Icefield where lunch is served at the Chalet. Proceed by saddle-horse and pack-train up Nigel Creek and over Nigel Pass to Four Point Camp on the head waters of the main Brazeau River.

Second day—Cross Jonas Shoulder to Water Falls Camp on the Poboktan River.

Third day—Down the Poboktan River and over Maligne Pass to camp on the upper Maligne River.

Fourth day—Down Maligne River Valley to Maligne Lake Chalet.

Fifth day—At Maligne Lake Chalet take scenic motor boat trip to the upper end of Maligne Lake and return.

Sixth day—Leave Maligne Chalet, crossing Evelyn Creek, Little Shovel Pass, and Big Shovel Pass, to Shovel Pass Camp.

Seventh day—From Shovel Pass Camp over the Sky Line Trail and Tekarra Basin to Jasper Park Lodge.

A trip of unusual scenic beauty through districts abounding in wild game; excellent camp sites. Inclusive cost, \$140.00 each.

This trip may be made by the reverse route, i.e., leave Jasper Park Lodge for Tekarra Basin, ascend the Sky Line to Big Shovel Pass for overnight stop, then descend to Maligne Lake Chalet, etc. Those who wish to make this trip must give an advance notice of four full days.

TONQUIN VALLEY

Journeying by a trail as colourful as it is interesting and passing en route the awe-inspiring Fraser and Eremite glaciers, the visitor discovers Tonquin Valley nestling peacefully at the base of the Ramparts, renowned as the most spectacular range of mountains in the Canadian Rockies. The home of peaceful herds of caribou, dotted with six shining, blue lakes, and famous for its splendid Rainbow-trout fishing, this beautiful valley is second to none in its interest to the angler, the mountaineer, and the photographer.

Transportation Schedule to Tonquin Valley:

Leave Jasper Park Lodge at 9.00 a.m. and motor to View Point at the lower end of Cavell Lake, where guides, saddle-horses, and pack-horses, are stationed to complete the trip. Luncheon is taken on the trail and the party reaches the Chalet at 4.00 p.m. On return leave Tonquin Valley Chalet at 9.00 a.m. and arrive at Jasper Park Lodge in time for dinner. Cost, for transportation by motor-car and saddle-horse, \$25.00 per person for the return trip. **Charges at Tonquin Valley Chalet are extra.**

Tonquin Valley Chalet, elevation 6,500, is situated on the Amethyst Lakes at the base of the Rampart Range, and consists of a central log building in which are the dining-room, living-room, and kitchen. Comfortable sleeping accommodation is provided in floored and heated canvas houses; each is furnished with two single beds, washstand, mirror, stove, etc. Rates, American Plan, \$6.00 a day per person; \$35.00 a week per person. Fishing boats can be rented at 50c. per hour, \$2.00 per half day, \$3.00 per day, and \$18.00 per week. Anglers, who wish the services of a fishing guide, must give advance notice of one full day.

MALIGNE LAKE—SKY LINE— TONQUIN VALLEY

Saddle Trip No. 11: A seven-day saddle and camping trip, which takes in the Maligne Lake—Sky Line trip, combined with a three-day trip to Tonquin Valley. Cost, \$90.00 each. On completion of the Maligne Lake—Sky Line portion of this trip, an overnight

stop is made at Jasper Park Lodge before proceeding to Tonquin Valley Chalet. The charges for this accommodation are extra and are not included in the \$90.00.

Saddle Trip No. 12:—Berg Lake—Mount Robson.

First day—From Jasper over the Maccarib Pass to Tonquin Valley Chalet.

Second day—At Tonquin Valley Chalet; side trip to Surprise Point.

Third day—Through Honor Pass to Camp Fowler at the head of Clairvaux Valley.

Fourth day—Through Clairvaux Pass by Mt. Fitzwilliam to camp at Yellowhead Pass, near Lucerne.

Fifth day—Over the shoulder of Seven Sisters Mountain to camp on the upper waters of the Miette River.

Sixth day—Through Centre Passage across the head waters of Grant Brook, and through Grant Pass to camp at the head waters of the Snaring River.

Seventh day—Through Colonel Pass to camp on the upper Moose River.

Eighth day—Through Moose Pass to camp on Calumet Creek.

Ninth day—Through Robson Pass to camp on Berg Lake.

Tenth day—At Berg Lake Camp; side trip on main Robson Glacier.

Eleventh day—By Tumbling Glacier, Emperor Falls, Valley of a Thousand Falls, Kinney Lake, and Grand Forks River, to Mt. Robson, reaching the railroad at the latter point.

Cost, including guides, food, horses, camp equipment, etc., for a minimum of three persons, one hundred and seventy-five dollars each (\$175.00). *Because of the extra cost of returning guides, horses, and equipment from Mt. Robson to Jasper, the regular trail and camping rates do not apply on this trip.*

Saddle Trip No. 14: North Boundary and Mount Robson—That portion of the Park which lies to the north of the main line of the Canadian National Railways contains numerous majestic peaks, passes rich in mountain flora, and an abundance of wild game (moose, caribou, deer, sheep, goats and bears), as well as good lake and stream fishing. Through this interesting country four scheduled camping trips are made via Rock Lake, upper Snake Indian River, Byng Pass, Wall Pass, the head of the Moose River, Moose Pass, Calumet Creek, the upper valley of Smoky River, Lake Adolphus, Berg Lake, Tumbling Glacier, Mount Robson, valley of a Thousand Falls, Kinney Lake, and Mount Robson Station.

This is a scheduled trip leaving Brewster's Black Cat Ranch July 8th and August 1st, arriving at Mount Robson Station July 18th and August 11th. On return, leave Mount Robson Station July 20th and August 13th, arriving at Brewster's Black Cat Ranch July 30th and August 23rd. Cost, including railway fare between Jasper and Mount

Robson or between Jasper and the ranch, \$125.00 per person for one-way trip.

For full particulars, see booklet entitled "Brewster's Black Cat Ranch".

TRAIL AND CAMPING TRIPS

Besides the regular trips outlined above, many other long and short trips, as interesting as they are varied, can be arranged to suit the wishes of all.

The cost of trail and camping trips, including complete camping equipment, guides, horses, food, etc., is as follows:

Slickers are not included in camping equipment.

	Per Day
One person (guide only).....	\$17.50
One person (guide and cook).....	25.00
Two persons (guide only).....	25.00
Two persons (guide and cook).....	33.00
Three persons (guide and cook).....	40.00
Each additional person.....	10.00

For maps, suggestions, and full particulars, write to "Fred Brewster's Rocky Mountain Camps Limited, Jasper, Alberta."

BREWSTER'S BLACK CAT RANCH

On the Eastern boundary of the Park, this ranch is thirty-five miles from Jasper, and six miles from Brule Station on the main line of the Canadian National Railways. Excellent riding trails, comfortable modern accommodation. Of peeled-log construction, the main building comprises a living-room, dining-room, and kitchen. Sleeping accommodation is provided in two-room cabins, each room being furnished with two single beds and a private bath. Rates: \$42.00 a week per person, including food, lodging, and saddle-horse, as well as transportation from and to Brule Station; for a stay of a month or longer, 10% discount. Telephone connection with Canadian National Telegraphs at Brule. Management, Fred and Jack Brewster, P.O. Address: Jasper National Park, Alberta.

FISHING

Excellent speckled trout fishing waters are found at Maligne Lake and River, also at Medicine and Beaver Lakes, where fighting Eastern Brook trout, artificially propagated, are found in countless numbers of exceptional size. Genuine Eastern Brookies, weighing up to two pounds, await the angler.

Chalets, boats, and boatmen, are available. Arrangements for the journey to these lakes and chalets by automobile, motor boat, and saddle-horse, may be made at the Transportation Desk. Here is a real fishing holiday in new lakes, which experts declare to be the finest speckled trout waters on the North American Continent. Jacques Lake, between the Maligne and Rocky Rivers, offers Dolly Varden trout; Beaver Dam Creek (four miles from the Lodge), Wabasso Lakes and Buffalo Prairie (ten miles distant), and Hardisty Creek at Athabaska Falls (twenty-one miles away), all plentifully supplied with rainbow trout, are anglers' paradises.

Amethyst Lakes in the Tonquin Valley are stocked with Rainbow and Kamloops trout and offer excellent sport.

PERMIT REQUIRED FOR FISHING

A permit is required for fishing in the waters of Jasper National Park. These can be obtained at the Motor Transportation Desk or from the Park Wardens at a cost of \$2.25 per person.

Anglers, while fishing, must have permits in their possession.

BOATS AND CANOES AT LAKES IN THE MALIGNE DISTRICT

Operated by Mrs. Grace Phillips

For fishing—canoes, skiffs, and dinghies, with outboard motors, \$1.00 for first hour; 50 cents for each additional hour; \$4.00 per day; \$20.00 per week. Without motors, 50 cents for first hour; 25 cents for each additional hour; \$2.00 per day; \$10.00 per week.

For cruising — drive-yourself — outboard motor-boats for five or more passengers—\$2.50 for first hour; \$1.00 for each additional hour.

Gasoline for outboard motors is extra; 50 cents per gallon at Medicine Lake; \$1.00 per gallon at Maligne Lake.

Guides to row, paddle, or operate boats—\$5.00 per day, or 50 cents per hour.

Round trip boat fare on Medicine Lake (eight miles return)—\$1.50 per person.

Round trip boat fare on Maligne Lake (34 miles return)—\$4.00 per person.

MALIGNE RIVER ANGLERS' CLUB

Anglers visiting the Maligne area will have an opportunity, without additional expense, to qualify for membership in the Maligne River Anglers' Club, particulars of which may be obtained at the Transportation Desk, Jasper Park Lodge. An angler who catches a speckled brook trout weighing not less than a pound qualifies for membership in the Maligne River Anglers' Club and receives a bronze lapel button. The angler who catches the heaviest speckled brook trout receives a gold lapel button, emblematic of the championship of the Maligne River Anglers' Club. The angler taking the second heaviest trout receives a silver button.

HIKING PARTIES

Accommodation at permanent camps at the regular rates; see pages 33 and 34.

Guides for hiking parties. . . . \$7.00 per day.

Hiking Trips with Guide

The following rates will apply for hiking trips which, with guide in attendance, can be made over the regular trails to any part of the Park:

One person.....	\$15.00 per day
Two persons.....	23.00 per day
Each additional person.....	7.50 per day

These rates include charges for pack-horses to carry food, bedding, tents and camp equipment for the party, in addition to the twenty pounds per person allowance of personal baggage.

ALL-EXPENSE PACKAGE TOURS

All Expense Tours covering visits of one to four and a half days at Jasper Park Lodge have been planned so that purchasers may utilize their time to the best advantage and at a minimum of expense. They include a selection of the most popular motor drives, **but do not include rail transportation to and from Jasper, nor motor bus fares between Jasper and Lake Louise, Banff, Calgary, etc.** The inclusive tour costs are based on the minimum rates for hotel accommodation including meals, at Jasper Park Lodge. If superior type of accommodation is desired full particulars should be given to your Rail or Travel Agent who will obtain quotation and reservation from the Manager of Jasper Park Lodge. As an illustration of these All Expense Tours, details of Tours 11-14 inclusive are shown below, followed by a condensed outline of the other 16 scheduled tours. Complete information on all twenty tours will be gladly furnished by your Rail or Travel Agent.

Times of arrival and departure of trains at Jasper, as shown for these Tours, are only approximate, and should be confirmed by consulting a current time-table.

ONE DAY TOUR, NO. 11

WESTBOUND	or	EASTBOUND
FIRST DAY Arrive at 1.30 p.m. (M.T.) from the East		FIRST DAY Arrive at 1.25 p.m. (P.T.) from the West
SECOND DAY Leave at 1.05 p.m. (P.T.) for the West		SECOND DAY Leave at 3.00 p.m. (M.T.) for the East

DETAILED TOUR SCHEDULE

FIRST DAY —Transfer by motor to Jasper Park Lodge, on Lac Beauvert, three miles distant, where American Plan accommodations will be provided.

Afternoon—Open for golf, tennis, boating, swimming, hiking, horse-back riding, or motoring.

Evening —Dinner, motion pictures, bridge, and dancing.

SECOND DAY—Leave the Lodge at 9.30 a.m. for a motor drive of 40 miles to Mt. Edith Cavell and the Glacier of the Angel. On this drive fine panoramas are obtained of the Athabaska and Astoria Valleys, also of numerous snow-capped peaks, including Mts. Signal, Tekarra, Kerkeslin, Hardisty, Franchere, The Throne, and the incomparable Mt. Edith Cavell. The highway terminates at the foot of the famous Glacier and affords an excellent view of this great field of living ice.

Afternoon—After returning to the Lodge for luncheon, transfer by motor to Jasper Station.

INCLUSIVE TOUR COST

Minimum-priced rooms	Detached bath	Private bath
Single rooms.....	\$13.00	\$15.00
Double rooms (per person).....	12.00	14.00

TWO DAY TOUR, NO. 12

WESTBOUND	or	EASTBOUND
FIRST DAY Arrive at 1.30 p.m. (M.T.) from the East		FIRST DAY Arrive at 1.25 p.m. (P.T.) from the West
SECOND DAY —At Jasper Park Lodge		SECOND DAY —At Jasper Park Lodge
THIRD DAY Leave at 1.05 p.m. (P.T.) for the West		THIRD DAY Leave at 3.00 p.m. (M.T.) for the East

DETAILED TOUR SCHEDULE

FIRST DAY —Transfer by motor to Jasper Park Lodge, on Lac Beauvert, three miles distant, where American Plan accommodations will be provided.

Afternoon—Open for golf, tennis, boating, swimming, hiking, horse-back riding, or motoring.

Evening —Dinner, motion pictures, bridge, and dancing.

SECOND DAY—Leave the Lodge at 9.00 a.m. for an 80-mile motor trip down the valley of the Athabaska River, via the new Inter-Provincial Highway, to Punch Bowl Falls. A stop is made here, and then the trip continues along the Fiddle River Canyon through an entirely different scenic region to the famous Miette Hot Springs.

Afternoon—Leave the Lodge at 3.15 p.m. for the General Drive. This is a motor trip of 28 miles, to Maligne Canyon, to Pyramid Mountain and through Jasper town. For full particulars, see Sightseeing Motor Drive No. 1, described on Page 30. Return to the Lodge for dinner.

Evening —Dinner, motion pictures, bridge, and dancing.

THIRD DAY —Leave the Lodge at 9.30 a.m. for a motor drive of 40 miles to Mt. Edith Cavell and the Glacier of the Angel. On this drive fine panoramas are obtained of the Athabaska and Astoria Valleys, also of numerous snow-capped peaks, including Mts. Signal, Tekarra, Kerkeslin, Hardisty, Franchere, The Throne, and the incomparable Mr. Edith Cavell. The highway terminates at the foot of the famous Glacier and affords an excellent view of this great field of living ice.

Afternoon—After returning to the Lodge for luncheon, transfer by motor to Jasper Station.

INCLUSIVE TOUR COST

Minimum-priced rooms	Detached bath	Private bath
Single rooms.....	\$30.00	\$34.00
Double rooms (per person).....	28.00	32.00

THREE DAY TOUR, NO. 13

WESTBOUND

or

EASTBOUND

FIRST DAY

Arrive at 1.30 p.m. (M.T.) from the East

FIRST DAY

Arrive at 1.25 p.m. (P.T.) from the West

SECOND and THIRD DAYS

At Jasper Park Lodge.

SECOND and THIRD DAYS

At Jasper Park Lodge.

FOURTH DAY

Leave at 1.05 p.m. (P.T.) for the West

FOURTH DAY

Leave at 3.00 p.m. (M.T.) for the East

DETAILED TOUR SCHEDULE

FIRST DAY —Transfer by motor to Jasper Park Lodge, on Lac Beauvert, three miles distant, where American Plan accommodations will be provided.

Afternoon—Leave the Lodge at 3.15 p.m. for the General Drive. This is a motor trip of 28 miles, to Maligne Canyon, to Pyramid Mountain and through Jasper town. For full particulars, see Sightseeing Motor Drive No. 1, described on Page 30. Return to the Lodge for dinner.

Evening —Dinner, motion pictures, bridge, and dancing.

SECOND DAY—Leave the Lodge at 9.00 a.m. for an 80-mile motor trip down the valley of the Athabaska River, via the new Inter-Provincial Highway, to Punch Bowl Falls. A stop is made here, and then the trip continues along the Fiddle River Canyon through an entirely different scenic region to the famous Miette Hot Springs.

Afternoon—Open for golf, tennis, boating, swimming, hiking, horse-back riding, or motoring.

Evening —Dinner, motion pictures, bridge, and dancing.

THIRD DAY —Leave the Lodge at 9.00 a.m. for a 150-mile trip to the Columbia Icefield. This drive follows the route of the Mount Edith Cavell Drive to a point beyond the crossing of the Astoria River, whence it continues along the valley of the Athabaska. From here the route is through the very heart of the Canadian Rockies to the largest and most impressive icefield outside the Arctic Circle. "Mother of Rivers" it is called. The waters of its melting glaciers travel thousands of miles to three oceans, the Atlantic, the Pacific, and the Arctic. The area of this icefield is estimated at 110 square miles and the average elevation is between 9,000 and 10,000 feet. Unquestionably, this is AMERICA'S GREATEST SCENIC DRIVE.

Evening —Dinner, motion pictures, bridge, and dancing.

FOURTH DAY—Morning open for golf, tennis, boating, swimming, hiking, horse-back riding, or motoring.

Afternoon—After luncheon transfer by motor to Jasper Station.

INCLUSIVE TOUR COST

Minimum-priced rooms	Detached bath	Private bath
Single rooms.....	\$44.00	\$50.00
Double rooms (per person).....	41.00	47.00

FOUR DAY TOUR, NO. 14

WESTBOUND

or

EASTBOUND

FIRST DAY

Arrive at 1.30 p.m. (M.T.) from the East

SECOND, THIRD and FOURTH DAYS

At Jasper Park Lodge

FIFTH DAY

Leave at 1.05 p.m. (P.T.) for the West

FIRST DAY

Arrive at 1.25 p.m. (P.T.) from the West

SECOND, THIRD and FOURTH DAYS

At Jasper Park Lodge.

FIFTH DAY

Leave at 3.00 p.m. (M.T.) for the East

DETAILED TOUR SCHEDULE

FIRST DAY —Transfer by motor to Jasper Park Lodge, on Lac Beauvert, three miles distant, where American Plan accommodations will be provided.

Afternoon—Open for golf, tennis, boating, swimming, hiking, horse-back riding, or motoring.

Evening —Dinner, motion pictures, bridge, and dancing.

SECOND DAY—Leave the Lodge at 10.00 a.m. for the General Drive. This is a motor trip of 28 miles, to Maligne Canyon, to Pyramid Mountain and through Jasper town. For full particulars, see Sightseeing Motor Drive No. 1, described on Page 30. Return to the Lodge for luncheon.

Afternoon—Leave the Lodge at 3.15 p.m. for a 40-mile drive to Mt. Edith Cavell and the Glacier of the Angel. On this drive fine panoramas are obtained of the Athabaska and Astoria Valleys, also of numerous snow-capped peaks, including Mts. Signal, Tekarra, Kerkeslin, Hardisty, Franchere, The Throne, and the incomparable Mt. Edith Cavell. The highway terminates at the foot of the famous Glacier and affords an excellent view of this great field of living ice.

Evening —Dinner, motion pictures, bridge, and dancing.

THIRD DAY —Leave the Lodge at 9.00 a.m. for an 80-mile motor drip down the valley of the Athabaska River via the new Inter-Provincial Highway, to Punch Bowl Falls. A stop is made here, and then the trip continues along the Fiddle River Canyon through an entirely different scenic region to the famous Miette Hot Springs.

Afternoon—Open for golf, tennis, boating, swimming, hiking, horse-back riding, or motoring.

Evening —Dinner, motion pictures, bridge, and dancing.

FOURTH DAY—Leave the Lodge at 9.00 a.m. for a 150-mile trip to the Columbia Icefield. This drive follows the route of the Mount Edith Cavell Drive to a point beyond the crossing of the Astoria River, whence it continues along the valley of the Athabaska. From here the route is through the very heart of the Canadian Rockies to the largest and most impressive icefield outside the Arctic Circle. "Mother of Rivers" it is called. The waters of its melting glaciers travel thousands of miles to three oceans, the Atlantic, the Pacific, and the Arctic. The area of this icefield is estimated at 110 square miles and the average elevation is between 9,000 and 10,000 feet. Unquestionably, this is AMERICA'S GREATEST SCENIC DRIVE.

Evening —Dinner, motion pictures, bridge, and dancing.

FIFTH DAY —Morning open for golf, tennis, boating, swimming, hiking, horse-back riding, or motoring.

Afternoon—After luncheon transfer by motor to Jasper Station.

INCLUSIVE TOUR COST

Minimum-priced rooms	Detached bath	Private bath
Single rooms.....	56.00	\$64.00
Double rooms (per person).....	52.00	60.00

TOURS NO. 21 - 24 INCLUSIVE

For the benefit of guests arriving at Jasper Park Lodge from Prince Rupert by train and departing by train for the East or West.

TOUR NO. 21—One and a half day visit—includes American plan accommodation at Jasper Park Lodge, the General and Mount Edith Cavell Drives and transfers between depot and the Lodge. Price per person: with detached bath, single \$18.50, double \$17.50; with private bath, single \$20.50, double \$19.50.

- TOUR No. 22—Two and a half day visit**—includes American plan accommodation at Jasper Park Lodge, the General, Miette Hot Springs, the famous Columbia Icefield Drives, and transfers between depot and the Lodge. Price per person: with detached bath, single \$38.50, double \$36.50; with private bath, single \$42.50, double \$40.50.
- TOUR No. 23—Three and a half day visit**—includes American plan accommodation at Jasper Park Lodge, the General, Mount Edith Cavell, Miette Hot Springs, the famous Columbia Icefield Drives and transfers between depot and the Lodge. It also permits open time for golf, tennis, horseback riding, swimming, etc. Price per person: with detached bath, single \$50.50, double \$47.50; with private bath, single \$56.50, double \$53.50.
- TOUR No. 24—Four and one half day visit**—includes American plan accommodation at Jasper Park Lodge, the General, Mount Edith Cavell, Miette Hot Springs, the famous Columbia Icefield Drives and transfers between depot and Lodge with additional open time for golf, tennis, horseback riding, swimming, etc. Price per person: with detached bath, single \$58.50, double \$54.50; with private bath, single \$66.50, double \$62.50.

TOURS NO. 31 - 34 INCLUSIVE

For the benefit of guests arriving at Jasper Park Lodge by train from the East or West and departing by motor bus for Lake Louise, Banff, Calgary, etc.

- TOUR No. 31—One day visit**—includes American plan accommodation at Jasper Park Lodge, the Mount Edith Cavell Drive and transfer from station to Lodge. Price per person: with detached bath, single \$11.25, double \$10.25; with private bath, single \$13.25, double \$12.25.
- TOUR No. 32—Two day visit**—includes American plan accommodation at Jasper Park Lodge, the General, Mount Edith Cavell, Miette Hot Springs Drives, also transfer from station to Lodge. Price per person: with detached bath, single \$28.25, double \$26.25; with private bath, single \$32.25, double \$30.25.
- TOUR No. 33—Three day visit**—includes American plan accommodation at Jasper Park Lodge, the General, Mt. Edith Cavell, Miette Hot Springs Drives, and transfer from station to Lodge, with open time for golf, tennis, swimming, horseback riding or motoring. Price per person: with detached bath, single \$36.25, double \$33.25; with private bath, single \$42.25, double \$39.25.
- TOUR No. 34—Four day visit**—includes American plan accommodation at Jasper Park Lodge, the General, Mount Edith Cavell, Miette Hot Springs Drives, transfer from station to Lodge with additional open time for golf, tennis, boating, horseback riding, swimming, etc. Price per person: with detached bath, single \$44.25, double \$40.25; with private bath, single \$52.25; double \$48.25.

TOURS NOS. 41 - 44 INCLUSIVE

For the benefit of guests arriving at Jasper Park Lodge by motor bus from Lake Louise, Banff, Calgary, etc., and departing via trains for the East or West, including Prince Rupert gateway.

- TOUR No. 41—One day visit**—includes American plan accommodation at Jasper Park Lodge, the Mount Edith Cavell Drive and transfer from Lodge to station. Price per person: with detached bath, single \$12.50, double \$11.50; with private bath, single \$14.50; double \$13.50.
- TOUR No. 42—Two day visit**—includes American plan accommodation at Jasper Park Lodge, the General, Mount Edith Cavell, and Miette Hot Springs Drives, transfer from Lodge to Station. Price per person: with detached bath, single \$29.50, double \$27.50; with private bath, single \$33.50; double \$31.50.
- TOUR No. 43—Three day visit**—includes American plan accommodation at Jasper Park Lodge, the General, Mount Edith Cavell, and Miette Hot Springs Drives, as well as open time for golf, tennis, swimming, horseback riding, etc., and transfer from Lodge to station. Price per person: with detached bath, single \$37.50, double \$34.50; with private bath, single \$43.50, double \$40.50.
- TOUR No. 44—Four day visit**—includes American plan accommodation at Jasper Park Lodge, the General, Mount Edith Cavell, Miette Hot Springs Drives, with additional open time for golf, tennis, swimming, horseback riding, etc., and transfer from Lodge to station. Price per person: with detached bath, single \$45.50, double \$41.50; with private bath, single \$53.50, double \$49.50.

TOURS NOS. 51-54 INCLUSIVE

For the benefit of guests arriving at Jasper Park Lodge by motor bus from Lake Louise, Banff, Calgary, etc., and departing by motor bus for Lake Louise, Banff, Calgary, etc.

- TOUR No. 51—One and a half day visit**—includes American plan accommodation at Jasper Park Lodge, the General and Mount Edith Cavell Drives. Price per person: with detached bath, single \$21.75, double \$19.75; with private bath, single \$25.75, double \$23.75.
- TOUR No. 52 Two and a half day visit**—includes American plan accommodation at Jasper Park Lodge, the General, Mount Edith Cavell, and Miette Hot Springs Drives, with open time for golf, tennis, boating, swimming, etc. Price per person: with detached bath, single \$35.75, double \$32.75; with private bath, single \$41.75, double \$38.75.
- TOUR No. 53—Three and a half day visit**—includes American plan accommodation at Jasper Park Lodge, the General, Mount Edith Cavell, and Miette Hot Springs Drives, with additional open time for golf, tennis, swimming, boating, etc. Price per person: with detached bath, single \$43.75, double \$39.75; with private bath, single \$51.75, double \$47.75.
- TOUR No. 54—Four and a half day visit**—includes American plan accommodation at Jasper Park Lodge, the General, Mount Edith Cavell, and Miette Hot Springs Drives, with more open time for golf, tennis, boating, swimming, etc. Price per person: with detached bath, single \$51.75, double \$46.75; with private bath, single \$61.75, double \$56.75.

OUTFITTERS

Saddle and camping trips anywhere in this vast Park, or beyond, for any duration of time or distance may be arranged at Jasper Park Lodge or direct with outfitters. Major Fred Brewster, Jack Brewster, J. A. Hargreaves, Wilkins & Neighbor, Charles Matheson and Stan. Kitchen have their headquarters at Jasper, where everything necessary is provided.

MOTOR-CAR SERVICE

In addition to the Jasper Park Lodge automotive equipment which meets all trains and is available to all Park visitors for motor service of any kind, including all drives advertised, the Athabasca, Pyramid and Astoria hotels provide motor-car service for their guests at regular tariff rates to the various points of interest in the Park.

MOTOR BUS SERVICE OVER THE COLUMBIA ICEFIELD HIGHWAY BETWEEN JASPER AND LAKE LOUISE, BANFF, ETC.

Roomy, modern, sightseeing buses, operated by Jasper Park Lodge, leave the Lodge daily, from June 15th to September 16th, for the Columbia Icefield, where transfer is made to services operating to Lake Louise, Banff, etc.

SCHEDULE

Southbound		Northbound	
Lv. Jasper Park Lodge.....	9.00 a.m.	Lv. Lake Louise.....	8.30 a.m.
Lv. Jasper.....	9.30 a.m.	Arr. Columbia Icefield.....	12.00 noon
Arr. Columbia Icefield.....	12.30 p.m.	Lv. Columbia Icefield.....	2.30 p.m.
Lv. Columbia Icefield.....	2.30 p.m.	Arr. Jasper.....	5.30 p.m.
Arr. Lake Louise.....	6.00 p.m.	Arr. Jasper Park Lodge.....	5.45 p.m.

RATES

		Motor		Private Cars	
		Bus		1-5 Pass.	6 Pass.
Between Jasper and Lake Louise	Single.....	\$13.50		\$67.50	\$81.00
	Return.....	22.50		112.50	135.00
Between Jasper and Banff	Single.....	18.00		90.00	108.00
	Return.....	29.00		145.00	174.00

Children under 12 years, half rate.

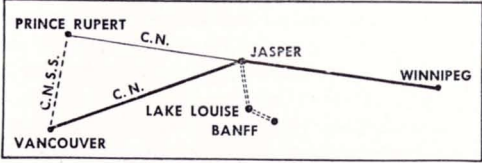
The above fares do not include meals at any point en route.

BAGGAGE TRANSFER—The foregoing rates include the free transfer of 2 pieces of hand baggage (a charge of 25 cents per piece each way will be made for additional pieces of hand baggage); they do not include the transfer of trunks or other heavy baggage, charges for which (between Jasper Park Lodge or Jasper, and the following points) are:

Columbia Icefield—	\$1.25	per piece each way.
Lake Louise	— 3.00	“ “ “ “
Banff	— 4.00	“ “ “ “

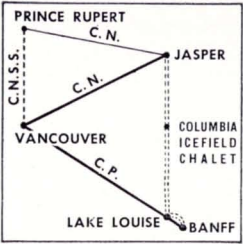
PASSENGERS MAY INCLUDE BANFF AND LAKE LOUISE IN THEIR ITINERARY ENROUTE TO, FROM OR THROUGH JASPER

In order that passengers visiting the Canadian Rockies may enjoy the scenic features of both Jasper National Park and Banff National Park, the Canadian National Railways have made arrangements whereby motor transportation between Jasper and Banff and/or Lake Louise over the famous Columbia Icefield Highway may be purchased when railway transportation is secured, thus enabling passengers to complete transportation arrangements (both rail and motor) for the entire trip at originating point.



The motor side trip over the Columbia Icefield Highway from Jasper to Lake Louise and Banff and return may be purchased in connection with your Canadian National ticket reading to or through Jasper.

Or the motor trip may be incorporated in a circle tour of the principal resorts, of the Canadian Rockies, as outlined below:



EASTBOUND FROM OR VIA VANCOUVER

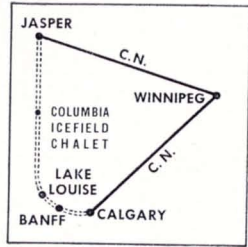
Canadian National Railways to Jasper direct or via C.N.S.S. and Prince Rupert (at slight additional cost to cover meals and berth on steamer)—motor transport over Columbia Icefield Highway to Banff or Lake Louise, thence returning via Canadian Pacific Railway to Vancouver, permitting stopovers as desired enroute.

This trip is also available in the opposite direction.

WESTBOUND FROM OR VIA WINNIPEG

Canadian National Railways to Jasper—motor transport over Columbia Icefield Highway to Calgary—thence Canadian National Railways to Winnipeg.

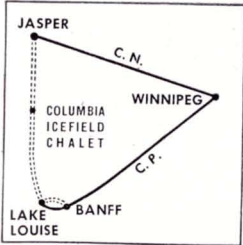
This trip is also available in the opposite direction.



WESTBOUND FROM OR VIA WINNIPEG

Canadian National Railways to Jasper—Motor Transport over Columbia Icefield Highway to Lake Louise or Banff—thence Canadian Pacific Railway to Winnipeg.

This trip is also available in the opposite direction.



TO AND FROM THE PACIFIC COAST VIA JASPER, BANFF, LAKE LOUISE

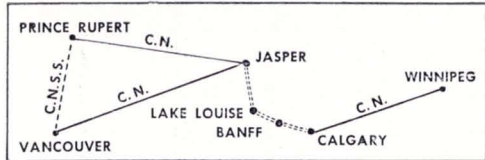
Passengers holding tickets to or from the Pacific Coast via Canadian National Railways may include the three mountain resorts of Jasper, Banff and Lake Louise, as follows:

EASTBOUND FROM OR VIA VANCOUVER

Canadian National Railways to Jasper direct or via C.N.S.S. and Prince Rupert at slight additional cost to cover meals and berth on steamer—motor transport to Calgary via Lake Louise and Banff thence Can. Nat. Rys.


WESTBOUND FROM OR VIA WINNIPEG

Canadian National Railways to Calgary—motor transport to Jasper via Banff and Lake Louise—thence Canadian National Railways to Vancouver direct or via C.N.S.S. and Prince Rupert (at slight additional cost to cover meals and berth on steamer). Canadian National Railways to Calgary—motor transport to Jasper via Banff and Lake Louise—thence Canadian National Railways to Vancouver direct or via C.N.S.S. and Prince Rupert (at slight additional cost to cover meals and berth on steamer).



BAGGAGE

HAND BAGGAGE will be carried free of charge on motor services between Jasper Park Lodge or Jasper, Alberta, and Lake Louise, Banff or Calgary. TRUNKS AND OTHER BAGGAGE will be checked by rail to the extent covered by rail transportation held by passengers. TRUNKS AND OTHER HEAVY BAGGAGE will be checked via truck service at regular tariff rates.



THRILLING, EXHILARATING holidays await those who choose the winter and spring months for their vacations in Jasper National Park. Each year, increasing numbers spend two weeks or more at timberline chalets under snow-clad mountains where skiing is comparable and often superior to that of the best winter resorts of Europe. For above the timberline at Jasper are literally miles of open alplands, huge snow-basins where the skiing terrain not only provides a countless variety of runs for the expert but actually facilitates the progress of a novice and adds to his enjoyment. In this farthest-north National Park perfect powder snow conditions blend with longer days and brilliant sunshine for a holiday no skier will forget.

Names of skiing areas such as Tonquin, Maligne, Whistlers, Columbia Icefield, Cavell and Shovel Pass are becoming familiar to skiers the continent over. Jasper, too, is becoming firmly established as a summer skiing centre, the combination of skiing and such sports as golf and swimming carrying irresistible appeal for many enthusiasts. Even July and August find devotees of skiing testing their turns in summer snow and under the warmth of the mid-year sun.

Accessibility is the keynote of Jasper's best-known winter and spring skiing area. Skiers arriving in the picturesque alpine village aboard Canadian National trains from either East or West ride by automobile, snowmobile and horse-drawn sleigh to the very door of Maligne Lake Chalet in its fairyland mountain setting 34 miles away. They reach the fine log building, with accommodation for 25 guests, in time for the evening meal without having to trek a step on their own. Once at Maligne, the skiing is unlimited. Behind the Chalet are two practise slopes, while above tower the friendly domes of the Bald and Opal Mountains. From their summits are

long, sweeping downhill runs, beginning with a mile or more over long open slalom stretches of the alplands, finishing off with a timber course to the Chalet. Even the lower slopes offer variety and thrills for the experienced skiers or beginners.

Part of the Maligne Lake terrain is Trappers' Valley, first made accessible to skiers in the spring of 1940. Only six miles from the Chalet at Maligne is this new resort with comfortable accommodation for 12 persons. Flush on timberline at an altitude of 6,500 feet, Trappers boasts vast alplands within five minutes skiing from the camp. This, too, is ideal country for the European type of ski touring.

Tours from one day's duration to two weeks head out from Maligne Lake Chalet, leading over magnificent skylines where skiing is unsurpassed.

At the alpine town of Jasper itself is some of the finest skiing of the Rockies. Only a few minutes from the railway, reached either by ski trail or by motor car, the Jasper Ski Club has a very interesting ski run on the north slope of The Whistlers, some 3,000 yards in length, and with a vertical drop of approximately 2,700 feet. Whistlers, too, is the gateway to the famous Tonquin Valley where the Alpine Club of Canada meets for annual ski camps. Here, too, is the sweep of the Fraser

Glacier, a mile-wide snowfield, dropping 3,500 feet in more than three miles. In this area are undulating alplands of the Eremite and the powder snow of Surprise Point and Para Glacier. Right at the foot of the Para and Fraser the Alpine Club maintains a winter headquarters while at Amethyst Lake, under the majestic Ramparts and Surprise Peak, is the Brewster Chalet.

Popular also during the winter and spring months, the slopes of Mount Edith Cavell entertain a host of skiers during June and much of July as fine summer snow is available only a half-hour's easy walk from the end of the highway leading to the impressive moraine formations at the toe of Glacier of the Angel. At the Columbia Icefield skiing usually is excellent on the lower slopes, only 15 minutes from the end of the highway, until mid-July. Later in the year, during the latter part of July and August, there is superb skiing in the huge snowbasins of Mount Athabaska and the upper Icefield where Snow Dome, Kitchener, Columbia and other of the massive peaks tower over snowfields miles in extent. For the skiing mountaineer this and the Maligne Lake terrain are particularly adaptable, as the summer skiing is often combined with rock climbing and exploration of the myriads of interesting glacial formations of the region.



MOUNT ROBSON PARK

THIS BEAUTIFUL AND OUTSTANDING SCENIC AREA in the heart of the Canadian Rockies contains over 800 square miles of awe inspiring grandeur. Directly adjoining America's largest mountain playground, Jasper National Park, it is easily reached by Canadian National main line Transcontinental Service.

Dominating this British Columbia forest reserve is Mount Robson, the

King of the Rockies, rearing its imponderable mass 12,972 feet above sea level. Enroute to it from Mount Robson Station every mile of the winding trail opens up new vistas or brings within the range of vision new glories in hanging glaciers and silver streams tumbling from dizzy heights and more distant peaks.

The Tumbling Glacier and the ice-filled basin from which it flows extend back from the pass summit for some five miles along the eastern flank of the mountain and are known as the Robson Cirque. The wonderful creations of ice and snow there accumulated justly constitute it one of the wonders of the Canadian Rockies, and its fame has gone far and wide.

Hargreaves Bros. maintain Bungalow camps at Mount Robson and Berg Lake, as well as a complete outfit of sure-footed mountain horses and capable guides to handle the Trail Rider over miles of established trails into beautiful scenic areas.

Mount Robson Dude Ranch is located within a few hundred yards of Mount Robson and Emperor, B.C. stations. At this Ranch the visitor may obtain, at reasonable rates, real home-like and modern accommodation. If desired a most restful entire vacation could be spent here or, for the more active, riding, hiking and climbing can be arranged. Should the visitor decide to ride the trails, this is the starting point for a variety of saddle trips to scenic areas. Outstanding among these trips is the one to Berg Lake Bungalow Camp, and Tumbling Glacier, a distance of approximately 16 miles.

Detailed information in regard to Mount Robson district may be secured and reservations and all arrangements may be made at the Transportation Desk, Jasper Park Lodge.



(Top) View from north showing the Tumbling Glacier
(Below) Berg Lake Camp.

THE CONTINENTAL LIMITED

AIR - CONDITIONED



1. The luxuriously appointed Observation Car.

Canadian National's through daily transcontinental train offers every comfort, excellent dining car meals, thoughtful and courteous service.

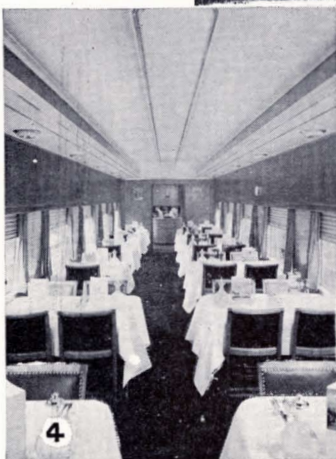


2. Tourist cars are exceptionally comfortable.

3. Attractive color schemes, new type adjustable seats, modern lighting are coach features on the Continental Limited.

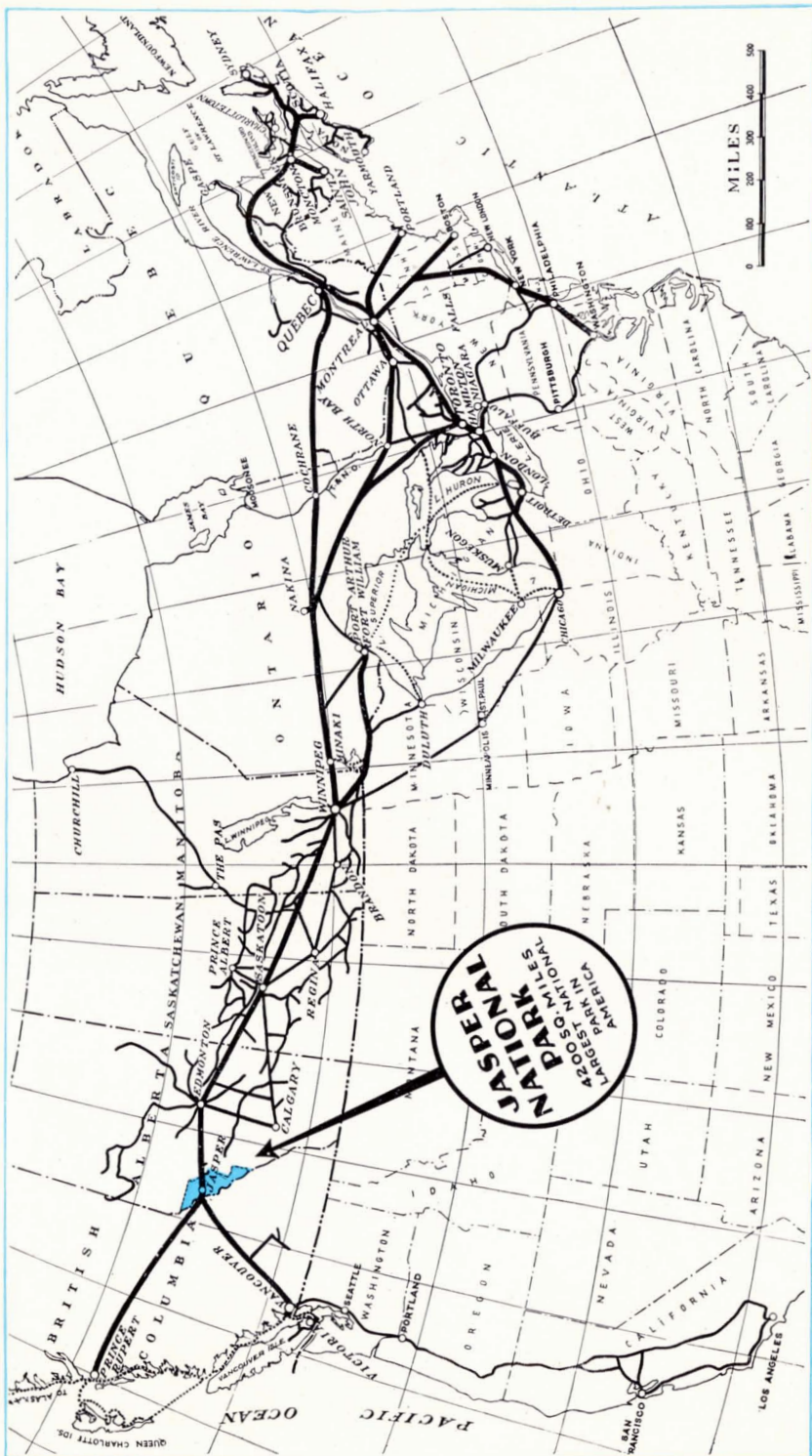


4. Canadian National meals are delightfully prepared and served — and moderately priced.



5. Sleeping cars provide a high standard of travel comfort.





Canadian National Railways System Map showing principal lines and routes from important Canadian and United States centres to JASPER NATIONAL PARK in the Canadian Rockies. Through sleeping cars from St. Paul and Minneapolis, via Winnipeg, bring United States mid-west points within two days' journey of Jasper. Summer excursion tickets are on sale to Jasper, Alta., during period May 15th to September 30th inclusive each year. In addition, one way, also round trip summer excursion tickets between Edmonton and east and Pacific Coast destinations are valid for stop-over at Jasper within limit.

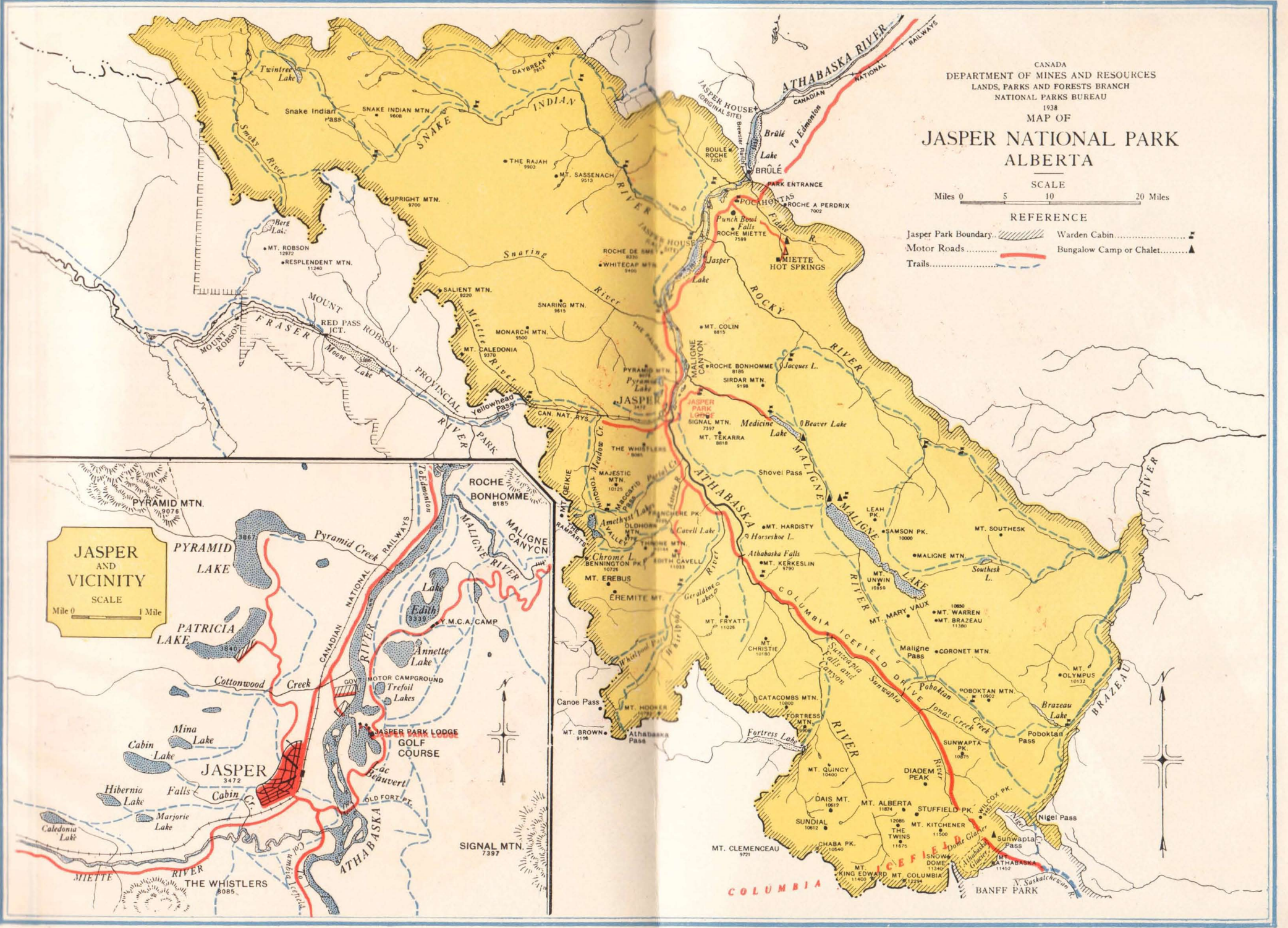
CANADA
DEPARTMENT OF MINES AND RESOURCES
LANDS, PARKS AND FORESTS BRANCH
NATIONAL PARKS BUREAU
1938

MAP OF
JASPER NATIONAL PARK
ALBERTA

SCALE
Miles 0 5 10 20 Miles

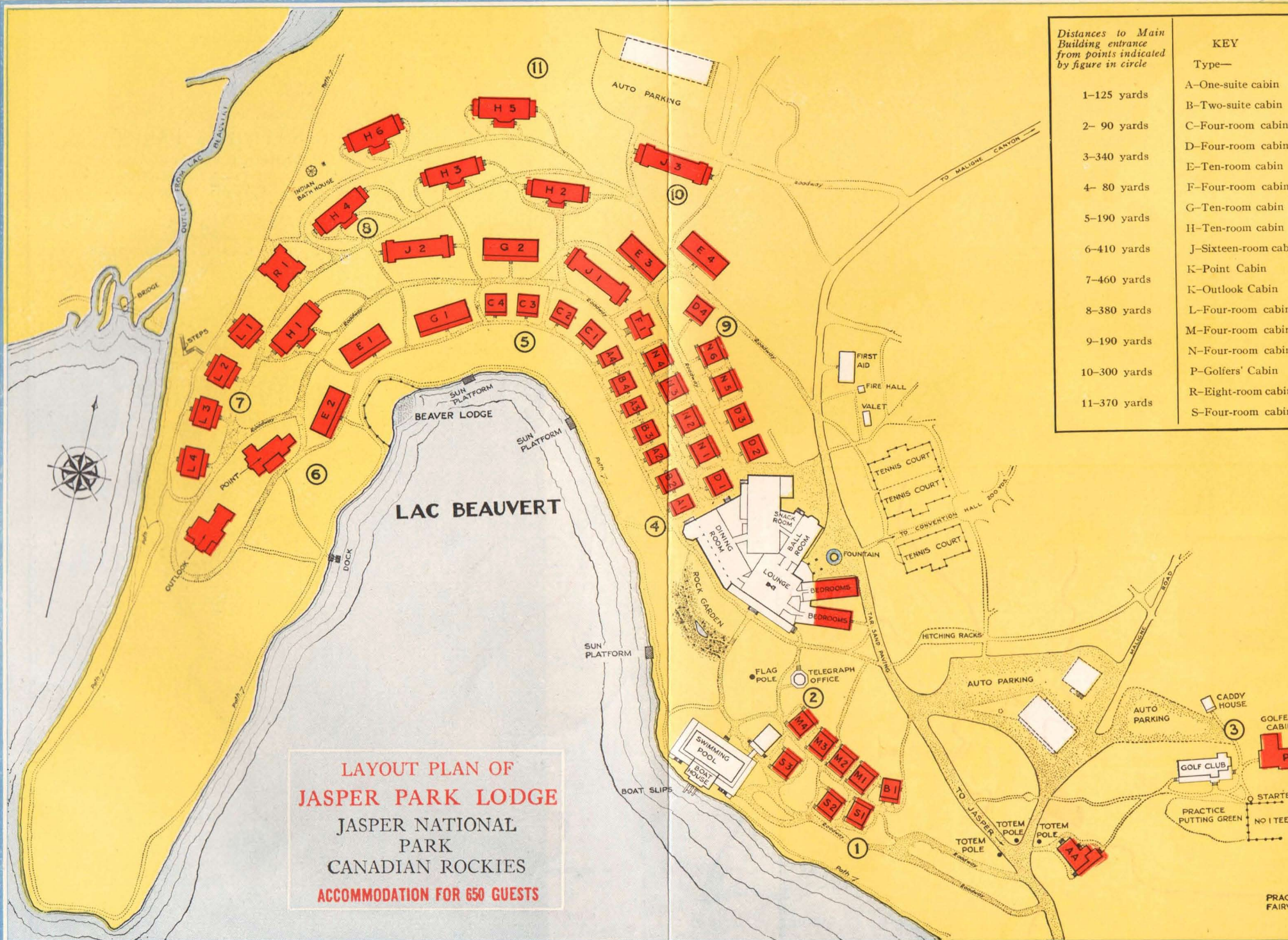
REFERENCE

Jasper Park Boundary.....
Motor Roads.....
Trails.....
Warden Cabin.....
Bungalow Camp or Chalet.....



JASPER AND VICINITY
SCALE
Mile 0 1 Mile





LAYOUT PLAN OF
JASPER PARK LODGE
 JASPER NATIONAL
 PARK
 CANADIAN ROCKIES
ACCOMMODATION FOR 650 GUESTS

Distances to Main Building entrance from points indicated by figure in circle		KEY
		Type—
1-125 yards	11	A—One-suite cabin
2- 90 yards	10	B—Two-suite cabin
3-340 yards	9	C—Four-room cabin
4- 80 yards	8	D—Four-room cabin
5-190 yards	7	E—Ten-room cabin
6-410 yards	6	F—Four-room cabin
7-460 yards	5	G—Ten-room cabin
8-380 yards	4	H—Ten-room cabin
9-190 yards	3	J—Sixteen-room cabin
10-300 yards	2	K—Point Cabin
11-370 yards	1	K—Outlook Cabin
		L—Four-room cabin
		M—Four-room cabin
		N—Four-room cabin
		P—Golfers' Cabin
		R—Eight-room cabin
		S—Four-room cabin

PRACTICE FAIRWAY

**CANADIAN NATIONAL RAILWAYS PASSENGER AGENCIES
CANADA AND UNITED STATES**

Belleville, Ont.	K. M. Dyson	243 Front St.
Boston, Mass.	T. E. P. Pringle	186 Tremont St.
Brantford, Ont.	W. M. Johnston	153 Colborne St.
Brockville, Ont.	J. D. Fluker	Cor. King East and Market Sts.
Buffalo, N.Y.	W. J. Burr	22 North Division St.
Calgary, Alta.	J. S. Peck	218 Eighth Ave., West
Charlottetown, P.E.I.	P. W. Clarkin	C.N. Rys. Station
Chatham, Ont.	W. E. Rispin & Son	145 King St. West
Chicago, Ill.	A. H. Davis	4 South Michigan Blvd.
Cincinnati, Ohio	J. L. Bickley	206 Dixie Terminal Bldg.
Detroit, Mich.	H. L. McCaughey	1239 Washington Blvd.
Duluth, Minn.	L. F. Lorentz	3044 West Grand Blvd.
Edmonton, Alta.	R. T. Lynott	428 West Superior St.
Guelph, Ont.	A. R. McDougall	Cor. Jasper and 100th Sts.
Halifax, N.S.	C. A. Baker	91 Wyndham St.
Hamilton, Ont.	J. J. Leydon	Cor. Barrington and George Sts.
Jasper, Alta.	Jas. Anderson	7 James St. North
	*F. N. McKenzie	Jasper Park Lodge
	<i>*During Summer Season.</i>	
Kansas City, Mo.	W. H. Happ	101 West Eleventh St.
Kingston, Ont.	V. C. Hanley	145 Princess St.
London, Ont.	N. A. B. Smith	430 Richmond St.
Los Angeles, Cal.	H. R. Bullen	607 South Grand Ave.
Minneapolis, Minn.	A. C. Lipsett	711 Marquette Ave.
Moncton, N.B.	G. D. LeBlanc	C.N. Rys Gen. Office Bldg.
Montreal, Que.	E. C. Kennedy	384 St. James St. West
New York, N.Y.	C. E. Jenney	673 Fifth Ave. at 53rd St.
North Bay, Ont.	C. L. Schweitzer	81 Main St.
Oshawa, Ont.	D. C. Forrester	3 King St. West
Ottawa, Ont.	T. G. Reece	93 Sparks St.
	Travel Information Bureau	Chateau Laurier
Peterboro, Ont.	H. E. Barnes	324 George St.
Philadelphia, Pa.	M. J. Woods	1500 Chestnut St.
Pittsburgh, Pa.	J. E. Myers	355 Fifth Ave.
Portland, Me.	G. A. Harrison	G. T. Ry. Station
Prince Rupert, B.C.	W. Cruickshank	528 Third Ave. East
Quebec, Que.	A. P. Bibeaault	10 Ste. Anne St.
Regina, Sask.	E. G. Wickerson	Union Station
San Francisco, Cal.	R. F. McNaughton	648 Market St.
Saskatoon, Sask.	J. S. Stephen	C.N. Rys. Station
Seattle, Wash.	J. F. McGuire	1329 Fourth Ave.
Sherbrooke, Que.	A. M. Stevens	23 Wellington St. North
St. Catharines, Ont.	G. H. Walker	158 St. Paul St.
Saint John, N.B.	F. M. Crocker	49 King St.
St. Louis, Mo.	W. E. Rudolph	314 North Broadway
St. Paul, Minn.	G. D. Nugent	335 Robert St.
Sudbury, Ont.	A. G. Bell	41 Durham St. South
Toronto, Ont.	R. E. Richmond	N.W. Cor. King and Yonge Sts.
	K. E. McLeod	527 Granville St.
Vancouver, B.C.	C.N. Travel Information Bureau	Hotel Vancouver
Victoria, B.C.	C. F. Earle	911 Government St.
Washington, D.C.	G. L. Bryson	922 Fifteenth St., N.W.
Windsor, Ont.	G. E. Walker	364 Ouellette Ave.
Winnipeg, Man.	F. J. Creighton	Cor. Main St. and Portage Ave.
Woodstock, Ont.	A. L. McPherson	408 Dundas St.

EUROPE

London, S.W. 1, Eng.	J. P. McClelland	17-19 Cockspur St.
London, E.C. 3, Eng.	E. A. Novis	95 Leadenhall St.
Liverpool, Eng.	H. V. Caldwell	19 James St.
Newcastle-on-Tyne, Eng.	Messrs. H. Burt & Co.	14 Shakespeare St.
Southampton, Eng.	F. E. Birch	134 High St.
Cardiff, Wales	S. C. Shipman	35 St. Mary St.
Glasgow, C2, Scotland	J. M. Walker	107 Hope St.
Antwerp, Belgium	Wm. Taylor	2 Quai Ortelius
Brussels, Belgium	Agence Maritime De Keyser,	
	Thornton, S. A.	Shell Bldg., 53 rue Cantersteen
Paris, France	A. L. Regamey	1 rue Scribe
Havre, France	Ch. Valron & Co.	101 Boul. de Strasbourg
Genoa, Italy	Lertora Bros. & Courtman	Piazza Nunziata 39

AUSTRALIA AND NEW ZEALAND

Sydney, Australia	G. F. Johnston	"Scottish House," 19 Bridge St.
Melbourne, Australia	D. R. Crawford	360 Collins St.
Wellington, New Zealand	W. J. Dymont	Featherston Chambers

ORIENT

Hong Kong, China	A. Brostedt	Shell House, Queen's Road
Singapore, Sts. Settlements	L. L. Lawler	Hong Kong Bank Chambers
Yokohama, Japan	D. E. Ross	No. 7 Yamashita-Cho.

A. FRASER, Vice-President, Montreal, Que.

C. W. JOHNSTON, General Passenger Traffic Manager, Montreal, Que.

A. A. GARDINER, Ass't Gen. Pass. Traffic Manager, Montreal, Que.

Jasper

NATIONAL
PARK

IN THE CANADIAN ROCKIES



CANADIAN
NATIONAL
RAILWAYS