

The Canadian Rockies—the Pacific Northwest—the fabled of the Coast. They are all possible within the limits of even a short vacation. Let us take a journey along this route forms one leg of the Triangle Tour illustrated elsewhere in these pages.

A two-day journey along this route forms one leg of the Triangle Tour illustrated elsewhere in these pages.

The Canadian Rockies—the Pacific Northwest—the fabled of the Coast. They are all possible within the limits of even a short vacation. Let us take a journey along this route forms one leg of the Triangle Tour illustrated elsewhere in these pages.

A two-day journey along this route forms one leg of the Triangle Tour illustrated elsewhere in these pages.

On the coast itself, fifty years of almost mushroom growth at one of the world's great ports has raised young cosmopolitan cities in what is known as the Pacific Northwest. Vancouver, Victoria and Seattle with their temperate year-round climate are set in naturally beautiful surroundings at the edge of the broad, blue Pacific.

Even more inspiring than when seen from land are the mountains as seen from the sea. Along the deeply indented coastline of British Columbia, Canadian National operates firm vessels that sail in full view of the Coast Range—real snow and ice mountains with glaciers streaming down from their lofty crests.

A two-day journey along this route forms one leg of the Triangle Tour illustrated elsewhere in these pages.

Only alpine wanderers with pack trains could enjoy the pick-up peaks of the Rockies a couple of generations ago. To-day two transcontinental railways cross the low passes and highways cross the great national parks which a wise government has created in the mountains to preserve their wild life and natural beauty for all time.

On the coast itself, fifty years of almost mushroom growth at one of the world's great ports has raised young cosmopolitan cities in what is known as the Pacific Northwest. Vancouver, Victoria and Seattle with their temperate year-round climate are set in naturally beautiful surroundings at the edge of the broad, blue Pacific.

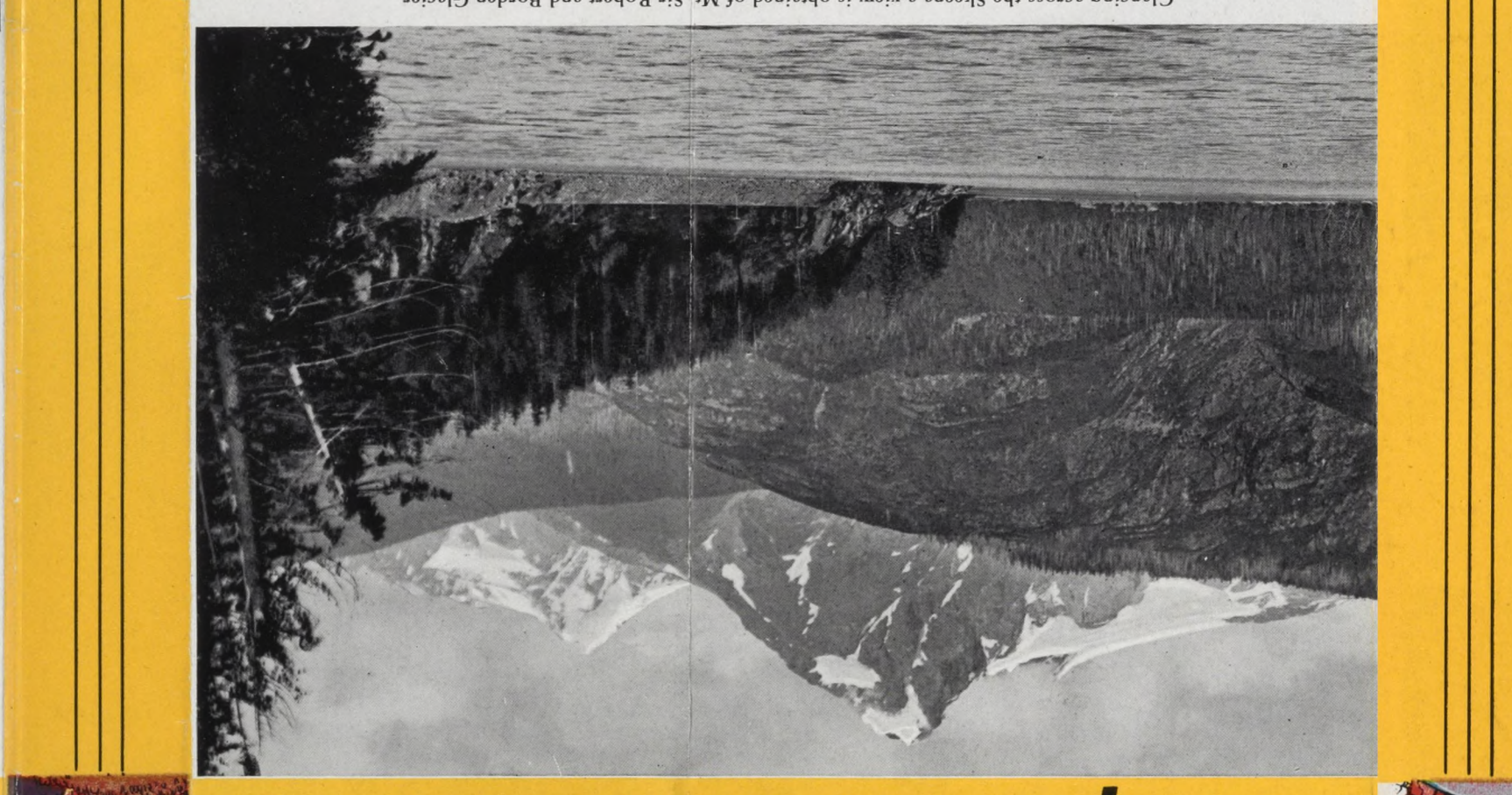
# The Magnificent CANADIAN ROCKIES



Detailed Information from Agents Listed within—or  
**CANADIAN NATIONAL**  
*To Everywhere in Canada*

Mount Robson, giant of Canada's great rock summits of lesser mountains her snow-capped cliffs beckoned two hours out of Jasper. Above the snowy reached two hours out of Jasper. Above the snowy reached two hours out of Jasper. Above the snowy reached two hours out of Jasper.

Mount Robson, giant of Canada's great rock summits of lesser mountains her snow-capped cliffs beckoned two hours out of Jasper. Above the snowy reached two hours out of Jasper. Above the snowy reached two hours out of Jasper.



## A Superb Panorama of Towering Mountains

## Other Camps and Lodges in the CANADIAN ROCKIES



**Rocky Mountain Goat.** The vast territory in Alberta and British Columbia embraced in the region known as the Triangle Tour of the Canadian Rockies and reached by the Canadian National Railways, has long been known for its big game and fishing possibilities. In recent years there has been a great development in lodge and camp accommodation. Enumerated below are a number of the more important lodges which cater to the tourist visitor who desires not merely fishing and hunting, but also the atmosphere and scenery of this rugged country as a background for his vacation.

**BREWSTER'S ROCKY MOUNTAIN RANCH**  
 This ranch is on the Eastern boundary of the Park, 35 miles from Jasper, six miles from Brule Station on the main line of the Canadian National Railways. Management, Fred and Jack Brewster, P.O. Address, Jasper National Park, Alberta.

**PYRAMID MOUNTAIN LODGE**  
 Six miles east of Jasper, on the Jasper-Edmonton highway, on the original Swift Estate, is the Pyramid Mountain Lodge. The Lodge is under the management of Stan Kitchen, Jasper, P.O.

**MOUNT ROBSON PARK**  
 Log cabin camp accommodation under the management of Hargreaves Bros. is available at Mount Robson, and passengers may detain at Mount Robson Station on the Jasper-Vancouver line, or at Emperor on the Jasper-Prince Rupert line, the two stations being but a few hundred yards apart. A camp is also operated by Hargreaves Bros. at Berg Lake, eighteen miles distant. For information as to rates, etc., address Roy Hargreaves, Mount Robson P.O. Dennison & Britain, Mt. Robson, are also guides and outfitters for trail trips.

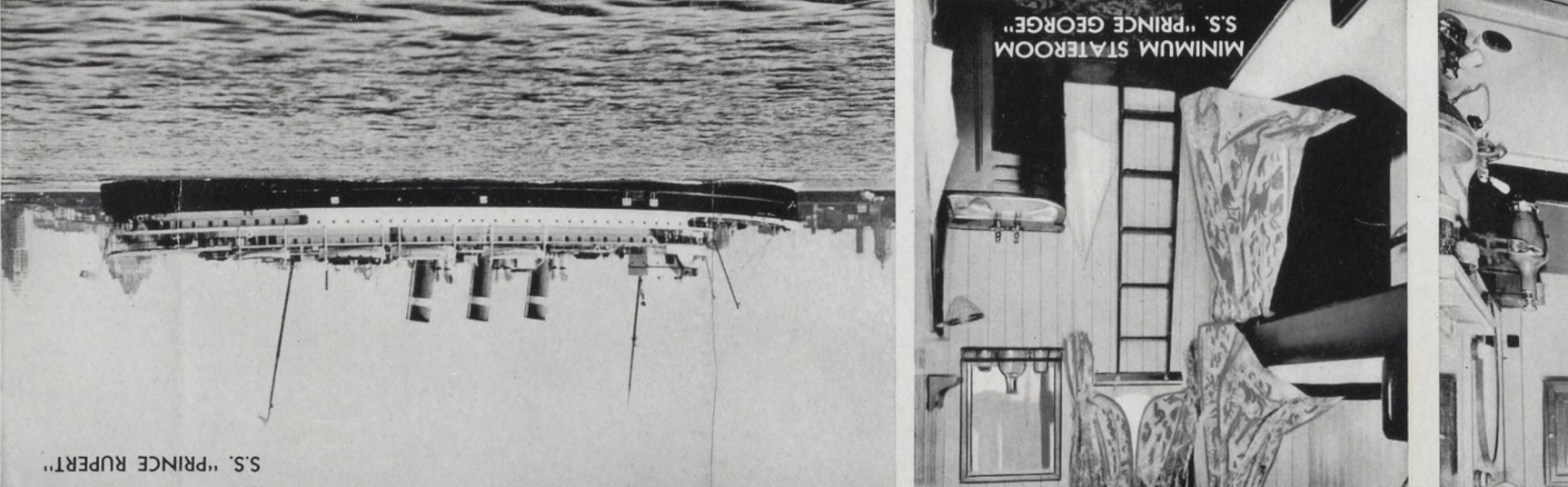
**KAMLOOPS DISTRICT**  
 Echo Lodge and Camps are situated on Paul Lake, twelve miles by motor car, from Kamloops Station. There is excellent accommodation here, with all modern facilities. Rates and information from: J. Arthur Scott, Echo Lodge, Kamloops, B.C., and T. D. Costley, Rainbow Lodge, Kamloops, B.C.

**FRASER RIVER**  
 Siska Lodge and Cabins, with accommodation for fifty, is situated one mile from the railway line at Cisco Station. For rates write: A. H. Gaugh, Cisco, via Lytton P.O., B.C.

**HARRISON LAKE DISTRICT**  
 Harrison Hot Springs, internationally known as a vacation resort and health centre, is on the main line of the Canadian National Railways (seven miles from Chilliwack station), 75 miles from Vancouver. The Hot Springs Hotel, open the year round, is a modern hotel of brick construction and entirely fireproof. For information and reservations communicate with Hotel Manager.

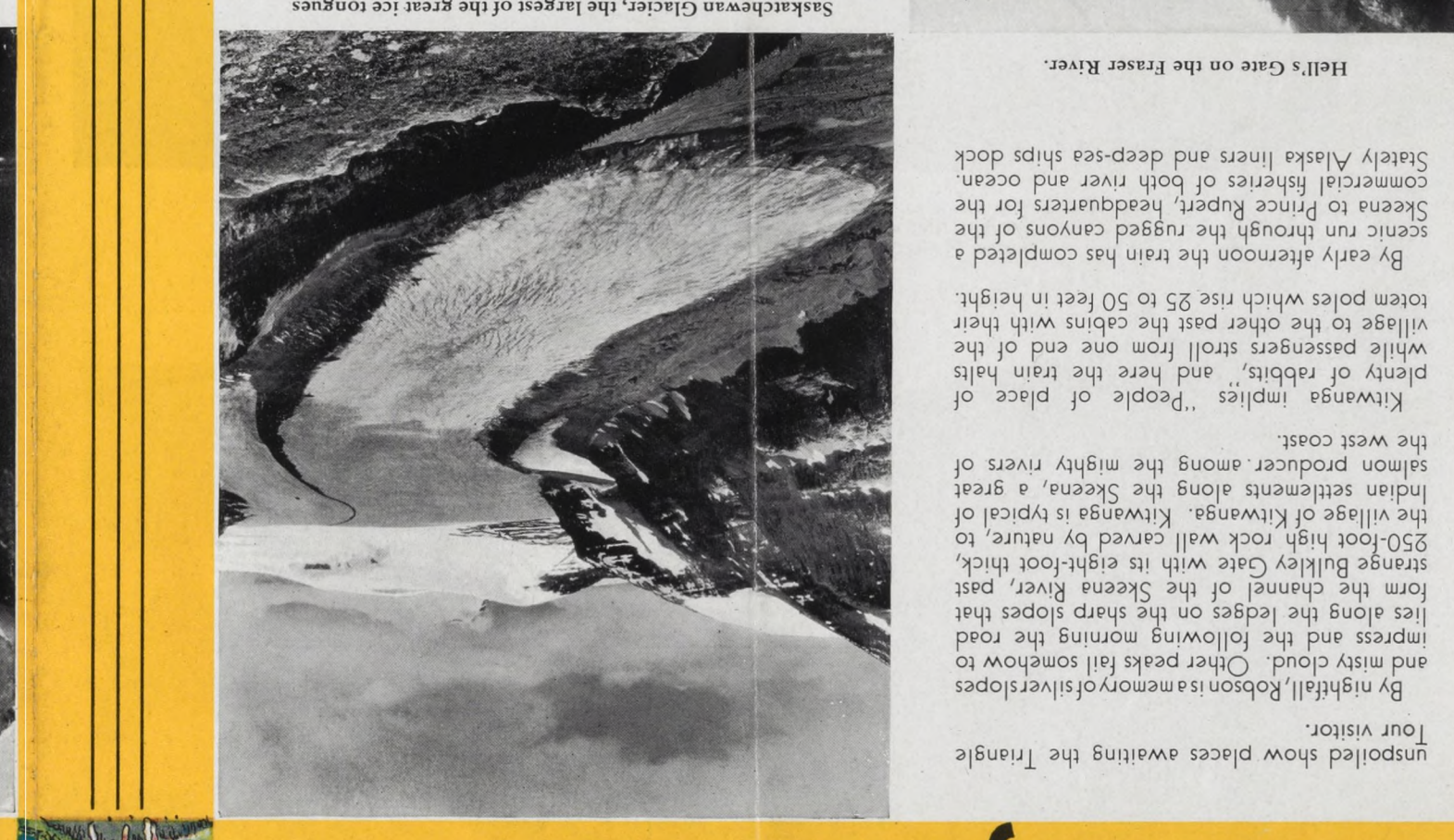
**STUART LAKE DISTRICT**  
 Douglas Lodge on Stuart Lake is reached from Vanderhoof Station, forty-five miles north, by good motor roads. It is three miles from the historic old fort St. James, established in 1806 by Simon Fraser. For rates and further information address the Manager, between June and October, Douglas Lodge, Fort St. James P.O., British Columbia; from November to May, address E. G. Baynes, at Grosvenor Hotel, Vancouver, British Columbia.

**THE GREAT CIRCLE LAKES**  
 A trip replete with interest is the 300 mile circle tour by motor boat and canoe operated by the Circle Guides and extending from Ootsa Lake by the Tahsa and Whitesail River to Whitesail Lake. Information in regard to this trip may be obtained from J. W. McNeill, Circle Guides, Ootsa Lake P.O., British Columbia.



at Prince Rupert, but romance is found along the Wharfedale. Here are hard-working craft, firm vessels that challenge the storms of the Pacific to supply the tables of New York and Chicago and other great metropolises of the West Coast.

at Prince Rupert, but romance is found along the Wharfedale. Here are hard-working craft, firm vessels that challenge the storms of the Pacific to supply the tables of New York and Chicago and other great metropolises of the West Coast.



## Towering Mountains

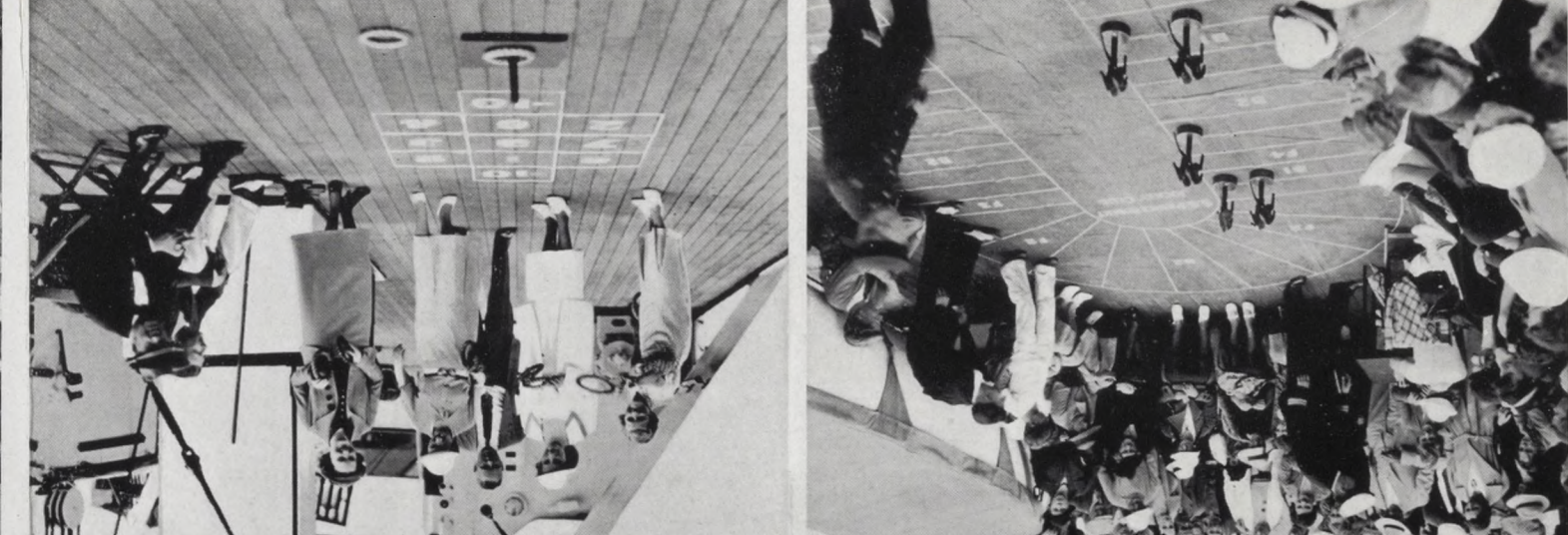
## A Peerless Playground



Jasper National Park becomes a natural setting for lodges and camps and in this respect the world-famous Jasper Park Lodge enjoys the reputation of being one of the finest of its kind known to man. Located on the shores of fascinating Lac Beauvert, the great main lodge is the central building in point of interest. One of the largest log buildings on the continent, it contains the reception desk, lounge rooms with the great double stone fireplace, dining room, ballroom, kitchens, guests' rooms and executive offices. Dozens of cosy and comfortable log cabins of various sizes are constructed along the lake shores, the inside of each room and building being lined with varnished fir, and the rooms being equipped with tub baths, showers and hot and cold water. In front of the lodge is an outdoor heated swimming pool, free to guests at the Lodge. Within a hundred yards is located one of the grandest golf courses yet offered the public, over which world's great golfers have played, with enjoyment and keen approval. A fleet of motor cars is always available for drives over miles and miles of safe mountain highways, each being piloted by a skilled driver. A stable of sure-footed horses is close by for those who go in for trail riding. For those who desire a completely relaxed holiday of real enjoyment, nothing could be more inviting than a walk around the lake, followed with a stroll in one of the easy chairs in front of the Lodge gazing at that never-to-be-forgotten picture of snow-capped Mount Edith Cavell, reflecting its outline in the jade green waters of Lac Beauvert.

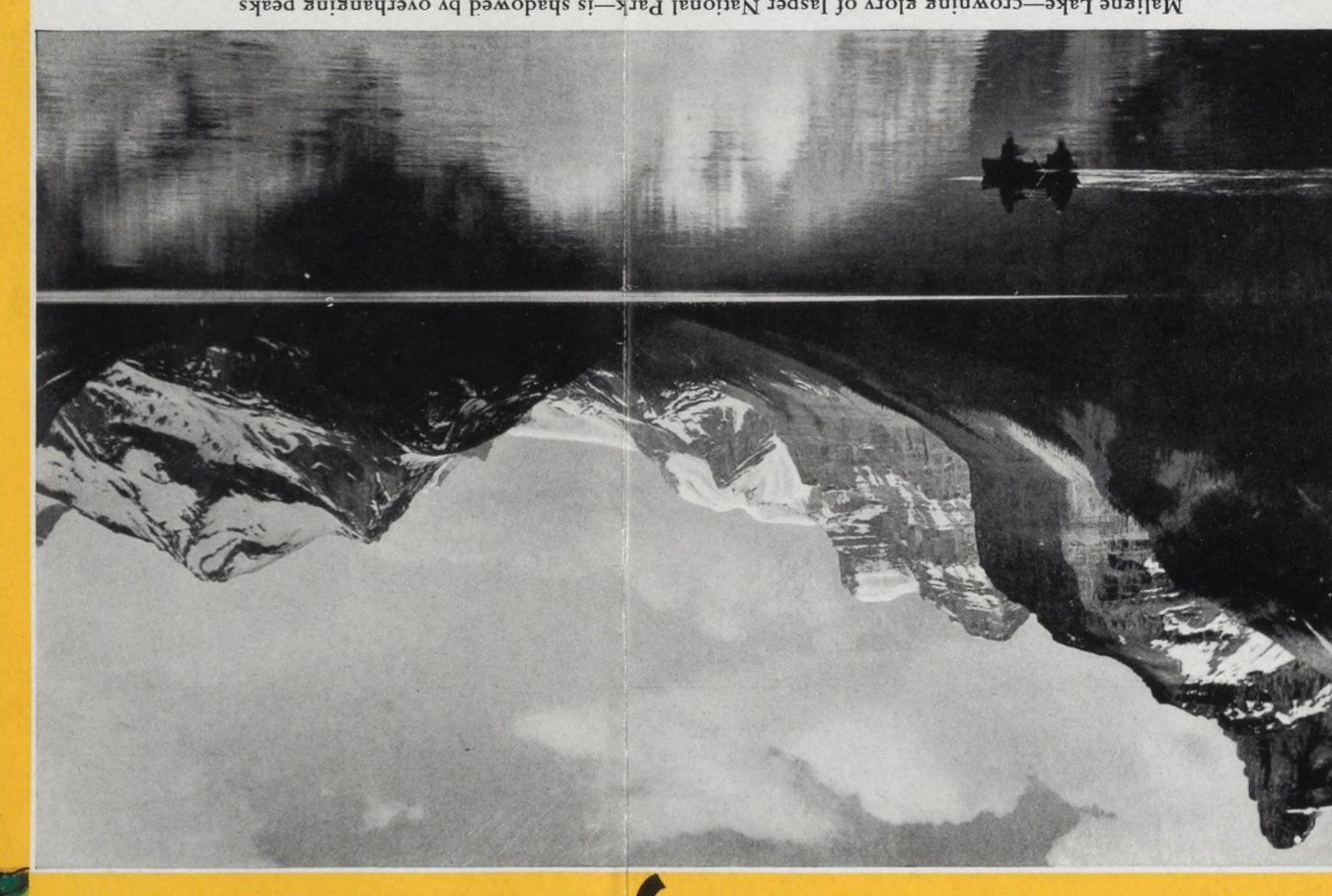
Medicine Lake Chalet. This Chalet is located at the lower end of Medicine Lake and can be reached from Jasper Park Lodge via motor car and motor boat, on horseback, or on foot. Medicine Lake marks the commencement of the new speckled trout fishing ground, rapidly becoming famous. Close by is Beaver Lake, also good trout fishing waters.

Maligne Lake Chalet. This Chalet, situated at the head of Maligne Lake, has a setting of scenic splendor. The view down the 18 miles of lake, with towering snow-capped mountains on either side, is awe inspiring and magnificent. Speckled trout fishing in the Maligne Lake and River area is second to none and is the headquarters for the Maligne River Anglers' Club. Comfortable accommodation, with good meals, is offered at these chalets.



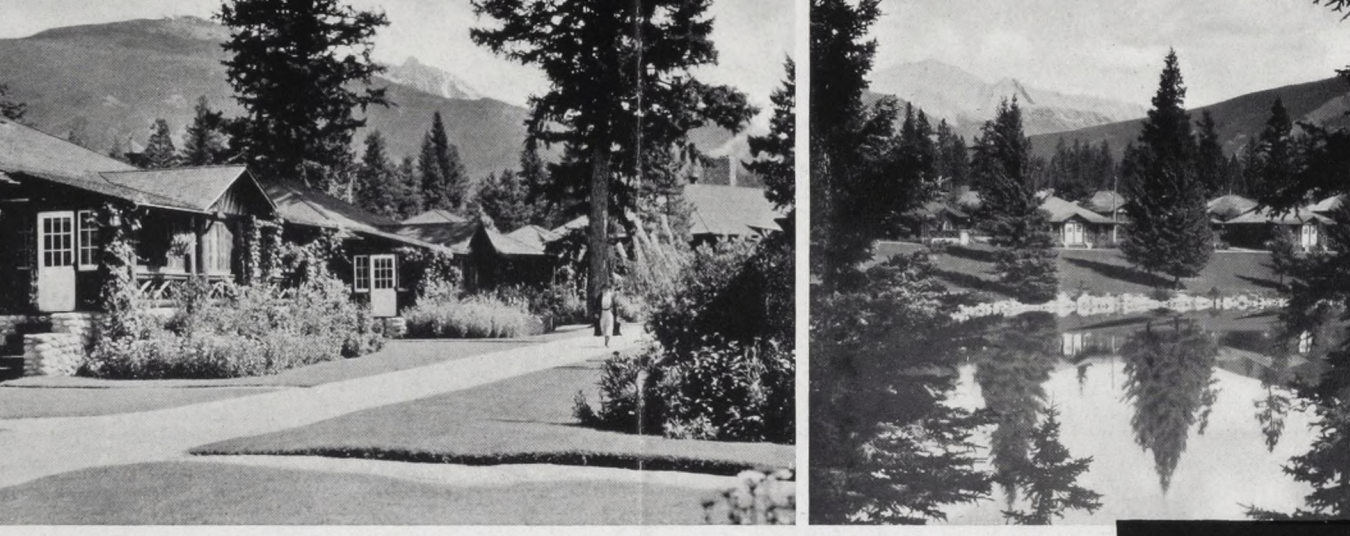
Ports of call include Ocean Falls and Powell River, where forest and ocean meet. It is located on what is now the main line of the Canadian National Railways, which winds its way through the Rockies via the Yellowhead Pass.

Ports of call include Ocean Falls and Powell River, where forest and ocean meet. It is located on what is now the main line of the Canadian National Railways, which winds its way through the Rockies via the Yellowhead Pass.



## Glaciers-Canyons-Rivers

## Jasper National Park



Jasper National Park enjoys the enviable reputation of being the largest national park on the continent, 4,200 square miles in extent. The park has long been recognized as one of the finest playgrounds in the world. Within its boundaries run ranges of snow-capped mountains magnificent to behold. These provide the mountain climber, trail rider and hiker with an answer to his dreams; the lakes and rivers, many now stocked with sturdy and vigorous speckled and rainbow trout, fulfill the fondest desire of the angler; Jasper Park Lodge and the various chalets in the mountains meet every want and desire for those holiday seekers who are coming to the Canadian Rockies in increasing numbers each year in search of pleasure and healthy relaxation.

The town of Jasper is situated not far from the confluence of the Athabasca and Miette Rivers. These rivers, coming from the south and west respectively, consolidate here and the Athabasca continues on its way in a north-easterly direction to the plains of Alberta and the Arctic Ocean. Some of the finest Alpine scenery imaginable is located within the boundaries of the Park, including the spectacular Maligne Lake, the largest glacier-fed lake in the Canadian Rockies.

Jasper National Park, which is in reality a huge game preserve, is the safe home of thousands of wild animals; bear, deer, caribou, elk, mountain sheep and goats and beaver live their daily lives in safety and wonderment at the signs of increasing civilization. The Park has many points of early historic interest and figures in the diaries of such early explorers as David Thompson, Gabriel Franchère, Ross Cox, Alexander Ross, David Douglas, Sir James Hector, Jasper Hawse and a host of others. It is located on what is now the main line of the Canadian National Railways, which winds its way through the Rockies via the Yellowhead Pass.

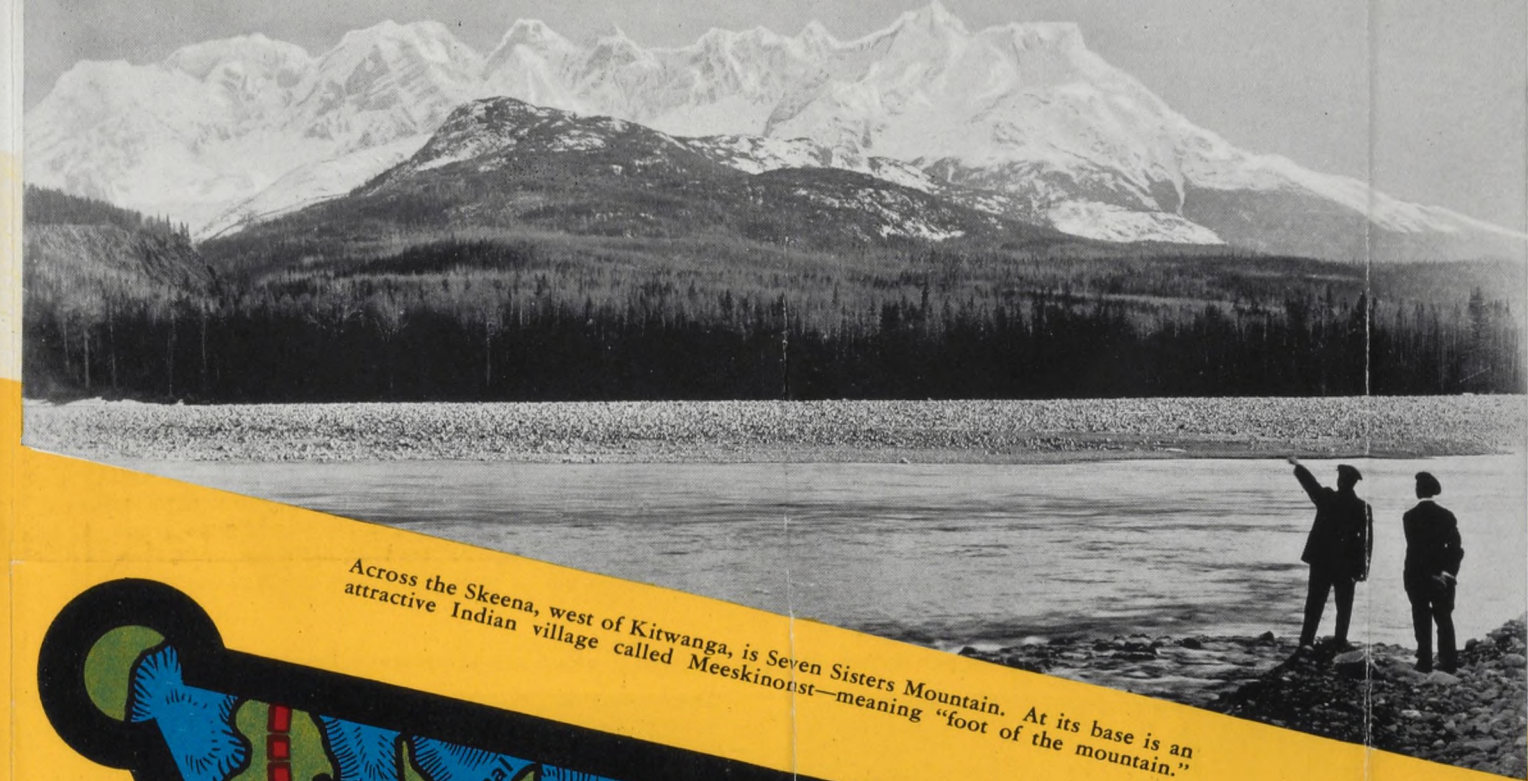
The best season to visit the Rockies? There is no general answer. Each season has its own beauty. Spring with its rush of melting snows and brilliant flowers, long temperate summer with its abundant sunshine, autumn with its exhilarating air and glory of color, the shining and sparkling majesty of winter—all have their special appeal and delight.







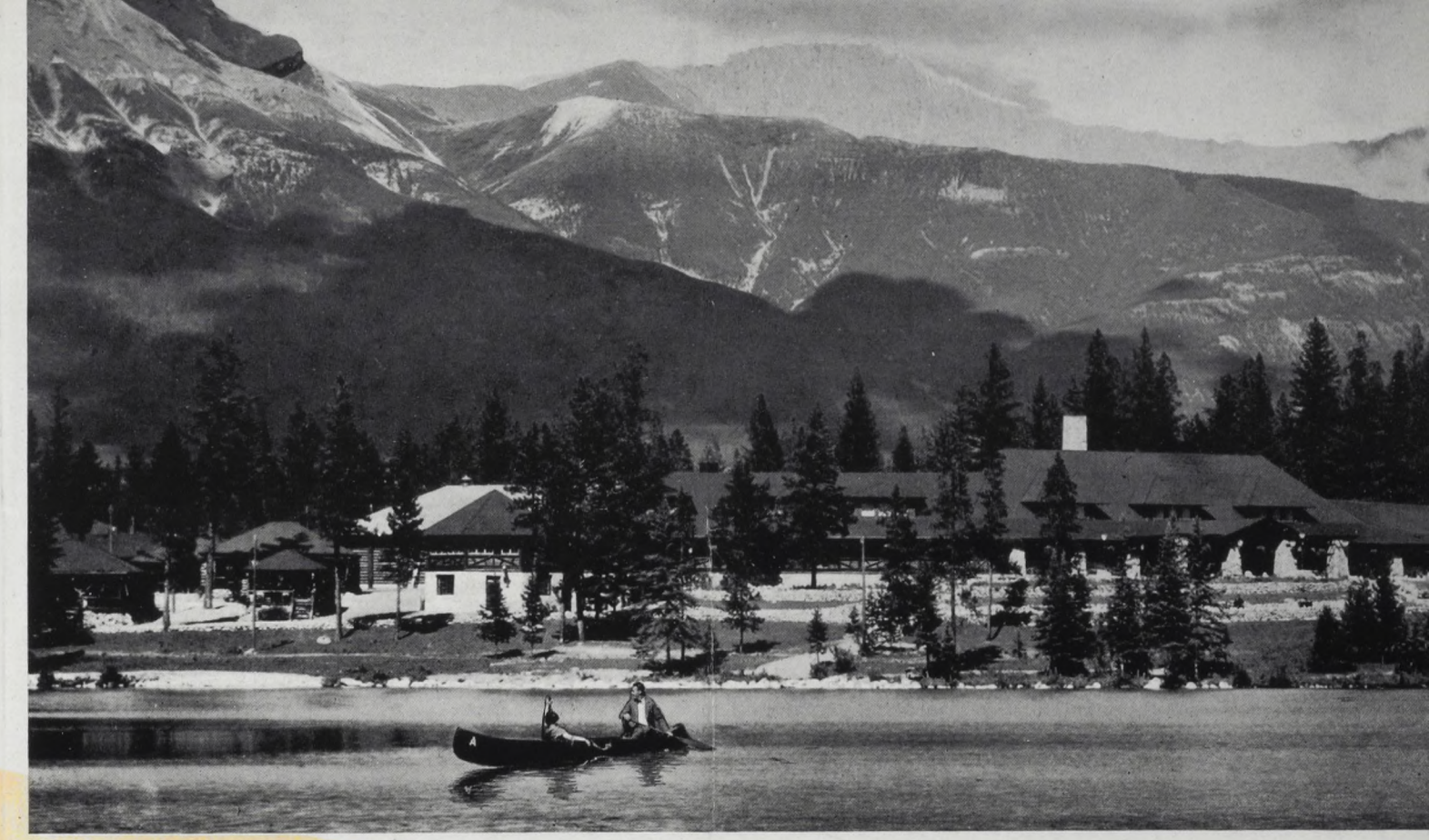
Outstanding among the strange phenomena of the glacial country is Bulkley Gate. The waters of the river, during aeons of time, have cut through a dyke of solid rock, eight feet thick, that Nature had in some period during the world's formation thrown across the valley. Canadian National trains pass in full view of Bulkley Gate.



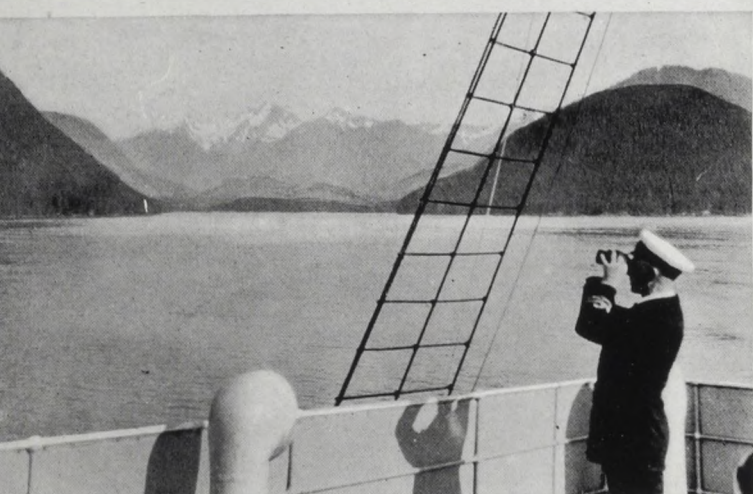
Across the Skeena, west of Kitwanga, is Seven Sisters Mountain. At its base is an attractive Indian village called Meeskinoist—meaning "foot of the mountain."



Mount Robson lifting its great bulk 12,972 feet into the heavens. This highest peak of the Canadian Rockies is in the centre of Mount Robson Park on the western boundary of Jasper National Park, north of the Yellowhead Pass.



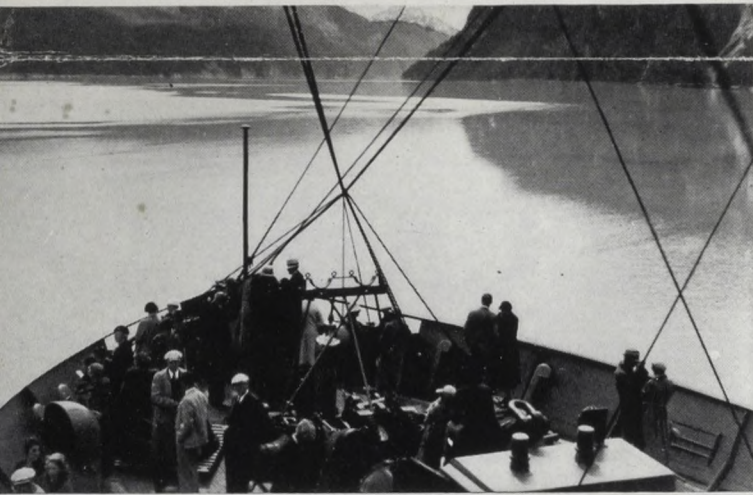
Jasper Park Lodge, with its broad, flower-bordered lawns sweeping down to the edge of Lac Beauvert. This mountain hostelry provides every comfort, service and convenience for visitors to Jasper National Park. Constructed of native logs and boulders, it blends so perfectly with its environs that it seems part of nature's original plan.



The voyage through the ever calm, protected waters of the Inside Passage is the most perfect sea voyage you can imagine. Stopping at ports of call filled with unaccustomed sights, it is an experience made doubly memorable by the comforts and niceties of service afforded on Canadian National Steamships.



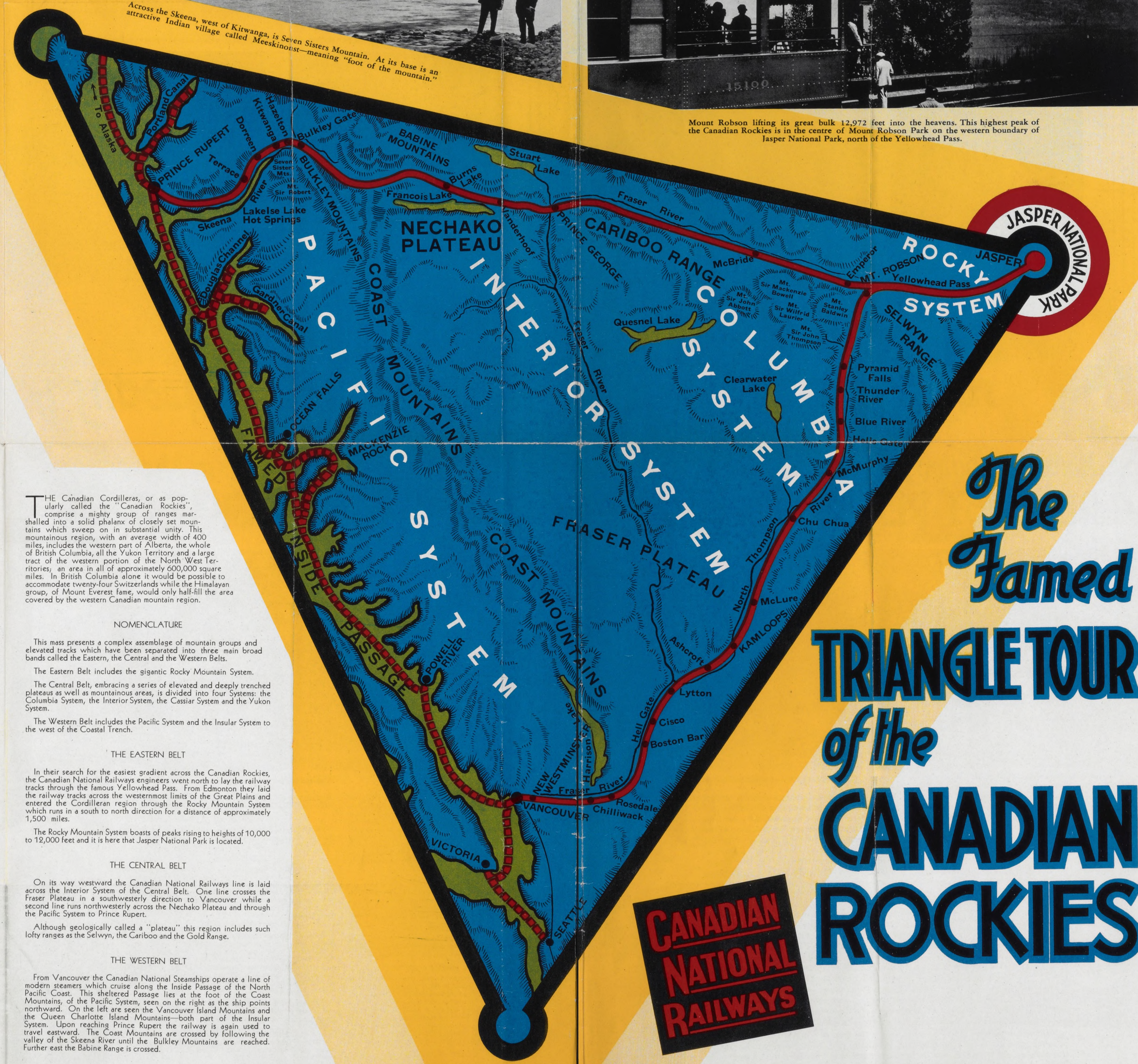
The train stops at Kitwanga to enable passengers to walk through a village which is still occupied by the People of the River, and to see the grotesque but strangely beautiful totems and the Indian graves. There are scores of figures depicting ancient history and legend preserved by the unerring knives of artists who knew how to turn tree trunks into astonishing life.



The Norway of America, as the Inside Passage has been called, takes the tourist through miles and miles of sheltered waterway, winding among countless beautiful islands, mountainous, wooded, and under ponderous cliffs where the mountains have dipped to the water's edge.



Overshadowing the junction of the Skeena and Bulkley Rivers is Roche de Boule. The name the mountain bears means "fall rock" and there is a legend that salmon formerly went a long way up the Bulkley but that this rock, falling into the river, blocked the passage to this fish.



THE Canadian Cordillera, or as popularly called the "Canadian Rockies," comprise a mighty group of ranges marshalled into a solid phalanx of closely set mountains which sweep on in substantial unity. This mountainous region, with an average width of 400 miles, includes the western part of Alberta, the whole of British Columbia, all the Yukon Territory and a large tract of the western portion of the North West Territories, an area in all of approximately 600,000 square miles. In British Columbia alone it would be possible to accommodate twenty-four Switzerlands while the Himalayan group, of Mount Everest fame, would only half-fill the area covered by the western Canadian mountain region.

**NOMENCLATURE**

This mass presents a complex assemblage of mountain groups and elevated tracts which have been separated into three main broad belts called the Eastern, the Central and the Western Belts.

The Eastern Belt includes the gigantic Rocky Mountain System.

The Central Belt, embracing a series of elevated and deeply trenched plateaus as well as mountainous areas, is divided into four Systems: the Columbia System, the Interior System, the Cassiar System and the Yukon System.

The Western Belt includes the Pacific System and the Insular System to the west of the Coastal Trench.

**THE EASTERN BELT**

In their search for the easiest gradient across the Canadian Rockies, the Canadian National Railways engineers went north to lay the railway tracks through the famous Yellowhead Pass. From Edmonton they laid the railway tracks across the westernmost limits of the Great Plains and entered the Cordilleran region through the Rocky Mountain System which runs in a south to north direction for a distance of approximately 1,500 miles.

The Rocky Mountain System boasts of peaks rising to heights of 10,000 to 12,000 feet and it is here that Jasper National Park is located.

**THE CENTRAL BELT**

On its way westward the Canadian National Railways line is laid across the Interior System of the Central Belt. One line crosses the Fraser Plateau in a southwesterly direction to Vancouver, while a second line runs northwesterly across the Nechako Plateau and through the Pacific System to Prince Rupert.

Although geologically called a "plateau" this region includes such lofty ranges as the Selkwy, the Cariboo and the Gold Range.

**THE WESTERN BELT**

From Vancouver the Canadian National Steamships operate a line of modern steamers which cruise along the Inside Passage of the North Pacific Coast. This sheltered Passage lies at the foot of the Coast Mountains, of the Pacific System, seen on the right as the ship points northward. On the left are seen the Vancouver Island Mountains and the Queen Charlotte Island Mountains—both part of the Insular System. Upon reaching Prince Rupert the railway is again used to travel eastward. The Coast Mountains are crossed by following the valley of the Skeena River until the Bulkley Mountains are reached. Further east the Babine Range is crossed.

# The Famed TRIANGLE TOUR of the CANADIAN ROCKIES

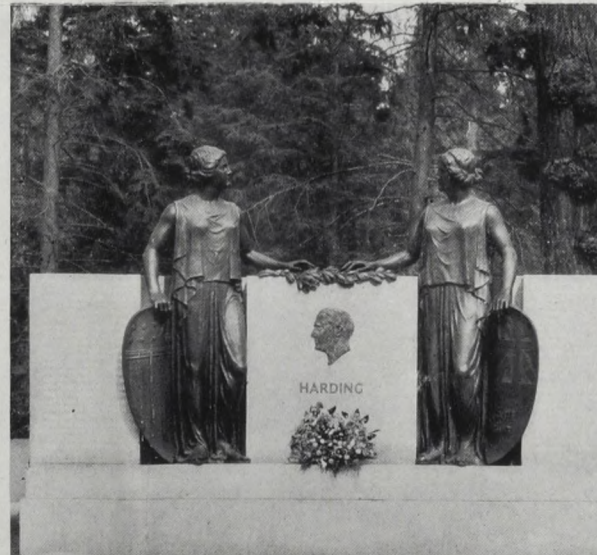


Part of Vancouver's business section, and the mighty drop of mountain scenery which forms the skyline.

Harding Memorial, Stanley Park, Vancouver.

Golf is played the year round in Victoria.

Victoria is noted for the beauty of its private homes and residential districts.



## CANADIAN NATIONAL RAILWAYS PASSENGER AGENCIES

CANADA AND UNITED STATES	EUROPE
Belleville, Ont. .... 443 Front St.	London, S.W. 1, Eng. .... 17-19 Cockspur St.
Boston, Mass. .... 186 Tremont St. (Masonic Bldg.)	London, E.C. 2, Eng. .... 89 Leadenhall St.
Brantford, Ont. .... Cor. King East and Market Sts.	Liverpool, Eng. .... 19 James St.
Brockville, Ont. .... Cor. King East and Market Sts.	Newcastle-on-Tyne, Eng. .... 14 Shalaker St.
Burlington, Ont. .... 420 Main St. Liberty Bank Bldg.	Southampton, Eng. .... 10 High St.
Calgary, Alta. .... 218 Eighth Ave. West	Cardiff, Wales .... 35 St. Mary St.
Charlottetown, P.E.I. .... C.N. Ry. Station	Glasgow, Scotland .... 2 Quai Ouellet
Chicago, Ill. .... Cor. Madison, Wiloughby Tower Bldg.	Antwerp, Belgium .... 2 Quai Ouellet
Cincinnati, Ohio .... 308 Dixie Terminal Bldg.	Havre, France .... 101 Boulevard Strasbourg
Detroit, Mich. .... 1230 Washington Blvd.	Genoa, Italy .... Piazza Portofino 2
Duluth, Minn. .... 304 West Grand Blvd.	Hamburg, Germany .... 17 Monksbergstrasse
Edmonton, Alta. .... 428 West Superior St.	
Guaymas, Mex. .... Cor. Jasper and 10th St.	
Halifax, N.S. .... Cor. Barrington and George Sts.	
Hamilton, Ont. .... James St. North	
Kansas City, Mo. .... Rm. 145 Pacific Bldg.	
Kingston, Ont. .... 284 Richmond St.	
London, Ont. .... 607 South Grand Ave.	
Los Angeles, Cal. .... 684 Main Street Ave.	
Minneapolis, Minn. .... 384 St. James St.	
Montreal, Que. .... 673 Fifth Ave.	
New York, N.Y. .... 673 Fifth Ave.	
North Bay, Ont. .... 81 Main St.	
Oshawa, Ont. .... 2 King St. West	
Ottawa, Ont. .... 98 Sparks St.	
Peterborough, Ont. .... 324 George St.	
Philadelphia, Pa. .... 200 Chestnut St.	
Pittsburgh, Pa. .... 505 Park Bldg. 253 Fifth Ave.	
Portland, Me. .... G. T. Building Station	
Prince Rupert, B.C. .... 528 Third Ave.	
Quebec, Que. .... Union Station	
Regina, Sask. .... 448 Market St.	
Salt Lake City, Utah. .... 101 Second Ave. South	
Saskatoon, Sask. .... 129 Fourth Ave.	
Seattle, Wash. .... 23 Wellington St. North	
St. Catharines, Ont. .... 138 St. Paul St.	
St. John, N.B. .... 49 King St.	
St. Louis, Mo. .... 114 North Broadway	
St. Paul, Minn. Rm. E-511, First National Bank Bldg.	
Sault Ste. Marie, Ont. .... N.W. Cor. King and Yonge Sts.	
Toronto, Ont. .... 527 Granville St.	
Vancouver, B.C. .... 911 Government St.	
Victoria, B.C. .... 622 10th St. S.W.	
Washington, D.C. .... 364 Ouellette Ave. (Canada Bldg.)	
Windsor, Ont. .... 364 Ouellette Ave. (Canada Bldg.)	
Woodstock, Ont. .... 408 Dundas St.	



At every hour of the day in Jasper National Park, Mount Edith Cavell is an object of supreme interest. To that serene and pure summit to the south of Jasper Park Lodge, all eyes unconsciously turn, and its beauty irresistibly impels one to a closer view. The Edith Cavell highway, which extends to the foot of the glacier, makes this possible in ease.



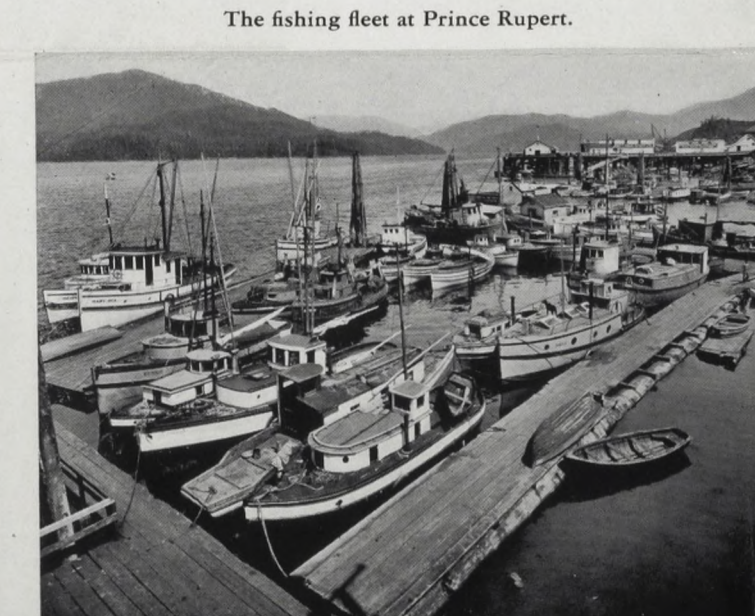
Athabasca Falls, one of the most interesting sights in Jasper National Park. The historic river, hurrying down from its source in the great Columbia Ice Fields, gathers volume until it is here 200 yards in width. The seething and tossing waters swirl about in great caverns and recesses carved in the rock and fall into a dark gorge eighty feet deep.



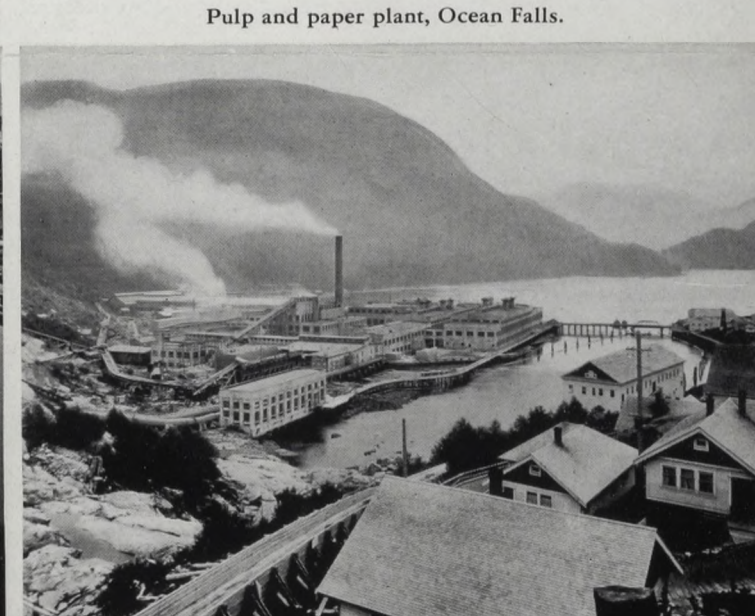
More than 150 miles of excellent motor roads, winding amid spruce and pine, through valleys, along rivers and lakes and ascending the slopes of mountains, lie within the boundaries of Jasper National Park. This motor drive to the foot of Sunwapta Falls discloses a region of impressive beauty.



Pyramid Falls, about 115 miles west of Jasper—one of the largest waterfalls in British Columbia. These falls, so called from the form they take as they tumble for more than 100 feet over a steep precipice, are forceful in impression and marvellously beautiful in grandeur.



The fishing fleet at Prince Rupert.



Pulp and paper plant, Ocean Falls.