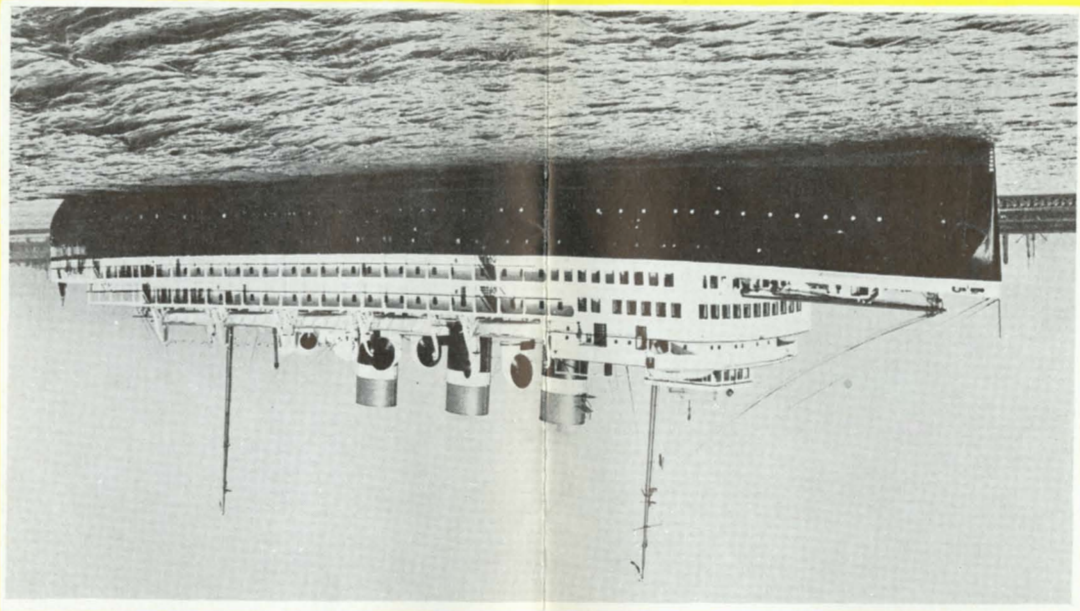


T. S. S. "PRINCE ROBERT"



The smart palatial "Prince Robert" has every-thing home for eleven days... has every-first class steamer possesses... well balanced program of care-free life afloat... organized enter-tainment... mas-querades... horse-racing... music... deck sports... and happy hours ashore.

CRUISE SCHEDULE

NOTE:—Above schedules are on Pacific Time—Alaska Time slower.

Direction	Ship	Time	Day
NORTHBOUND	Vancouver	9:00 P.M.	July 12
	Ocean Falls	7:00 P.M.	July 13
	Prince Rupert	10:00 P.M.	July 14
	Wrangell	4:30 P.M.	July 15
	Juneau	8:00 P.M.	July 16
	Skagway	12:00 M.D.T.	July 17
	Prince Rupert	10:00 P.M.	July 18
	Wrangell	4:30 P.M.	July 19
	Juneau	8:00 P.M.	July 20
	Skagway	12:00 M.D.T.	July 21
	Prince Rupert	10:00 P.M.	July 22
	Vancouver	9:30 A.M.	July 23
SOUTHBOUND	Skagway	6:00 P.M.	Aug. 2
	Juneau	1:00 A.M.	Aug. 3
	Wrangell	2:00 P.M.	Aug. 4
	Prince Rupert	8:00 A.M.	Aug. 5
	Juneau	1:00 A.M.	Aug. 6
	Wrangell	2:00 P.M.	Aug. 7
	Prince Rupert	8:00 A.M.	Aug. 8
	Juneau	1:00 A.M.	Aug. 9
	Wrangell	2:00 P.M.	Aug. 10
	Prince Rupert	8:00 A.M.	Aug. 11
	Vancouver	9:30 A.M.	Aug. 12

Minimum fare \$100.00

America's Last Frontier

ALASKA

Sensational Summer Cruises

An eleven-day cruise—the Ace of vacations—to the strangest store-house of treasure and romance on this Continent—Alaska and the Yukon. Come! you to land the "Prince Robert", new adventures while the clean, crisp ocean air... see new faces the clean, crisp ocean air... see you to land the "Prince Robert", new adventures while the clean, crisp ocean air... see great mountain peaks... a wide symphony of glaciers. Glide past sweeping, flower-strewn valleys. Land at towns filled with strange sights. At night, marvel in at the mystic across aurora, marching in bright colors at the Land of the Midnight Sun. Then, set your feet on "The Trail of '98" to the Yukon.

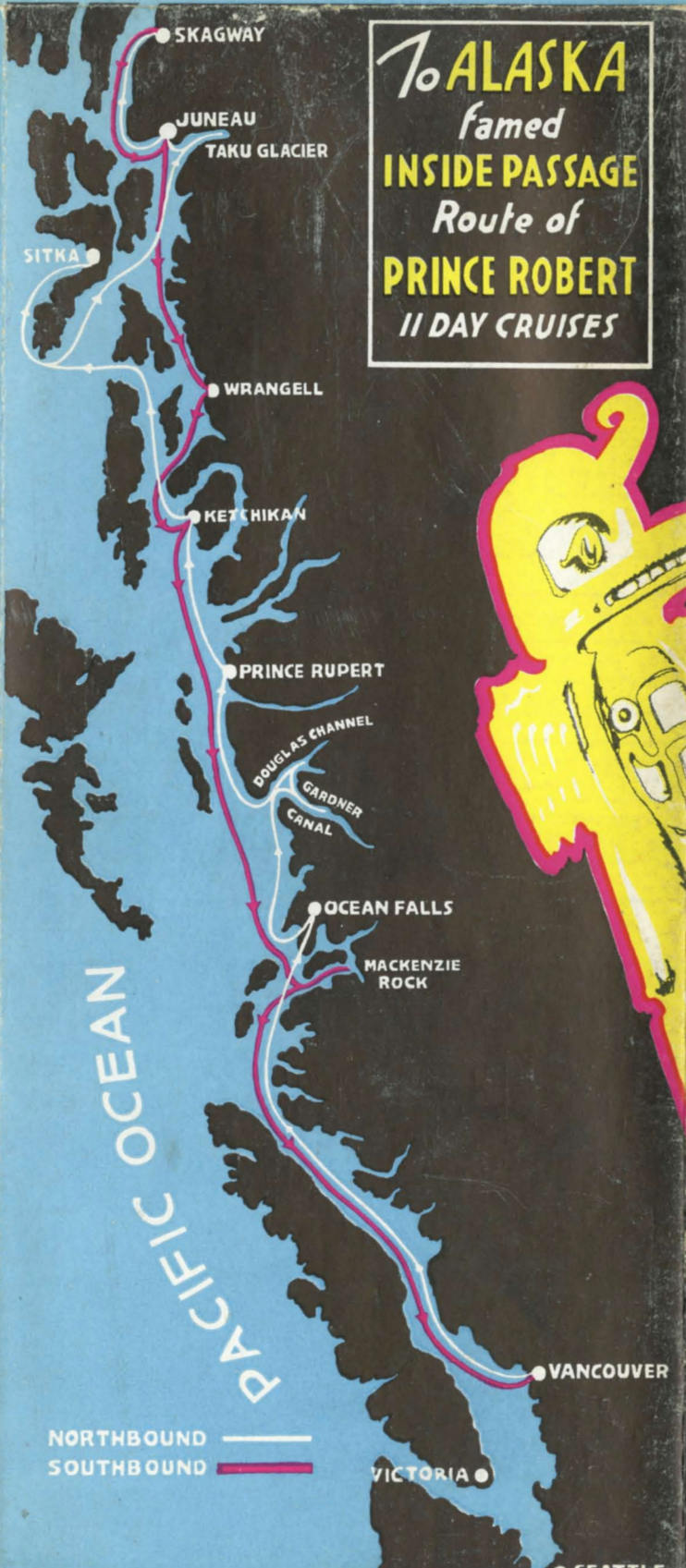
The journey on shipboard to Alaska, over the calm, protected waters of the National Railways Limited of westward on the highest peaks of the Canadian Rockies Robson route, and follow the mighty rivers of the North. You may stop over an Alpine playing in Jasper National Park, in extent. Surely this is an ideal vacation.

REGULAR ALASKA SERVICE - 1935

In addition to the four special Alaskan Cruises as referred to herein, eleven sailings, as below, are scheduled on the S.S. "PRINCE RUPERT" and "PRINCE GEORGE". The minimum round trip fare, including meals and berth, for 1935 will be \$85.00.

	June		July				August				
	Rupert	George	Rupert	George	Rupert	George	Rupert	George	Rupert	George	Rupert
NORTHBOUND											
Lv. Vancouver	17	24	1	8	15	22	29	5	12	19	26
Ar. Powell River	18	25	2	9	16	23	30	6	13	20	27
Ar. Ocean Falls	18	25	2	9	16	23	30	6	13	20	27
Ar. Prince Rupert	19	26	3	10	17	24	31	7	14	21	28
Ar. Ketchikan	19	26	3	10	17	24	31	7	14	21	28
Ar. Taku Glacier	20	27	4	11	18	25	1	8	15	22	29
Ar. Juneau	20	27	4	11	18	25	1	8	15	22	29
Ar. Skagway	21	28	5	12	19	26	2	9	16	23	30
SOUTHBOUND											
Lv. Skagway	22	29	6	13	20	27	3	10	17	24	31
Ar. Juneau	23	30	7	14	21	28	4	11	18	25	1
Ar. Wrangell	23	30	7	14	21	28	4	11	18	25	1
Ar. Ketchikan	23	30	7	14	21	28	4	11	18	25	1
Ar. Prince Rupert	24	1	8	15	22	29	5	12	19	26	2
Ar. Ocean Falls	25	2	9	16	23	30	6	13	20	27	3
Ar. Powell River	26	3	10	17	24	31	7	14	21	28	4
Ar. Vancouver	26	3	10	17	24	31	7	14	21	28	4

- The Passenger Department of the Canadian National Railways, through any of its offices as listed below, will gladly assist you further, in any possible way, toward planning an Alaskan trip.
- Bellefonte, Ont. 243 Front St.
 - Boston, Mass. 186 Tremont St. (Masonic Bldg.)
 - Brantford, Ont. 153 Colborne St.
 - Brockville, Ont. Cor. King E. and Market Sts.
 - Buffalo, N.Y. 420 Main St., Liberty Bank Bldg.
 - Calgary, Alta. 218 Eighth Ave. West
 - Charlottetown, P.E.I. C. N. Ry. Station
 - Chicago, Ill. 4 South Michigan Blvd.
 - Cincinnati, Ohio. Cor. Madison, Willoughby Tower Bldg.
 - Detroit, Mich. 49 E. Fourth St.
 - Duluth, Minn. 1523 Washington Blvd.
 - Edmonton, Alta. 304 West Grand Blvd.
 - Guelph, Ont. 428 West Superior St.
 - Halifax, N.S. Cor. Jasper and 100th Sts.
 - Hamilton, Ont. 91 Wyndham St.
 - Kingston, Ont. Cor. Barrington and George Sts.
 - Kansas City, Mo. 705 Walnut St.
 - London, Ont. 430 Richmond St.
 - Los Angeles, Cal. 607 South Grand Ave.
 - Minneapolis, Minn. 384 St. James St.
 - Montreal, Que. 673 Fifth Ave.
 - New York, N.Y. 81 Main St.
 - North Bay, Ont. 3 King St. West
 - Oshawa, Ont. 3 King St. West
 - Ottawa, Ont. 93 Sparks St.
 - Peterboro, Ont. 324 George St.
 - Philadelphia, Pa. 1500 Chestnut St.
 - Pittsburg, Pa. Franklin Trust Bldg.
 - Portland, B.C. 505 Park Bldg., 355 Fifth Ave.
 - Prince Rupert, B.C. G. T. Railway Station
 - Quebec, Que. 528 Third Ave.
 - Regina, Sask. 10 Ste. Anne St.
 - San Francisco, Cal. Union Station
 - Saskatoon, Sask. 648 Market St.
 - Sherbrooke, Que. 23 Wellington St. North
 - St. Catharines, Ont. 158 St. Paul St.
 - Saint John, N.B. 49 King St.
 - St. Louis, Mo. 314 North Broadway
 - St. Paul, Minn. 83 East Fifth St.
 - Sudbury, Ont. 26 Elm St.
 - Toronto, Ont. N. W. Cor. King and Yonge Sts.
 - Vancouver, B.C. 527 Granville St.
 - Victoria, B.C. 911 Government St.
 - Washington, D.C. 922-15th Street N.W.
 - Windsor, Ont. 364 Ouellette Ave. (Canadi. Bldg.)
 - Winnipeg, Man. Cor. Main St. and Portage Ave.
 - Woodstock, Ont. 408 Dundas St.



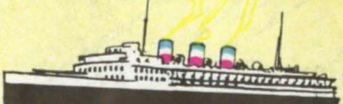
To ALASKA
famed
INSIDE PASSAGE
Route of
PRINCE ROBERT
11 DAY CRUISES

4 Special ELEVEN DAY ALASKA CRUISES

via Sitka and Taku Glacier
ON THE PALATIAL T.S.S.

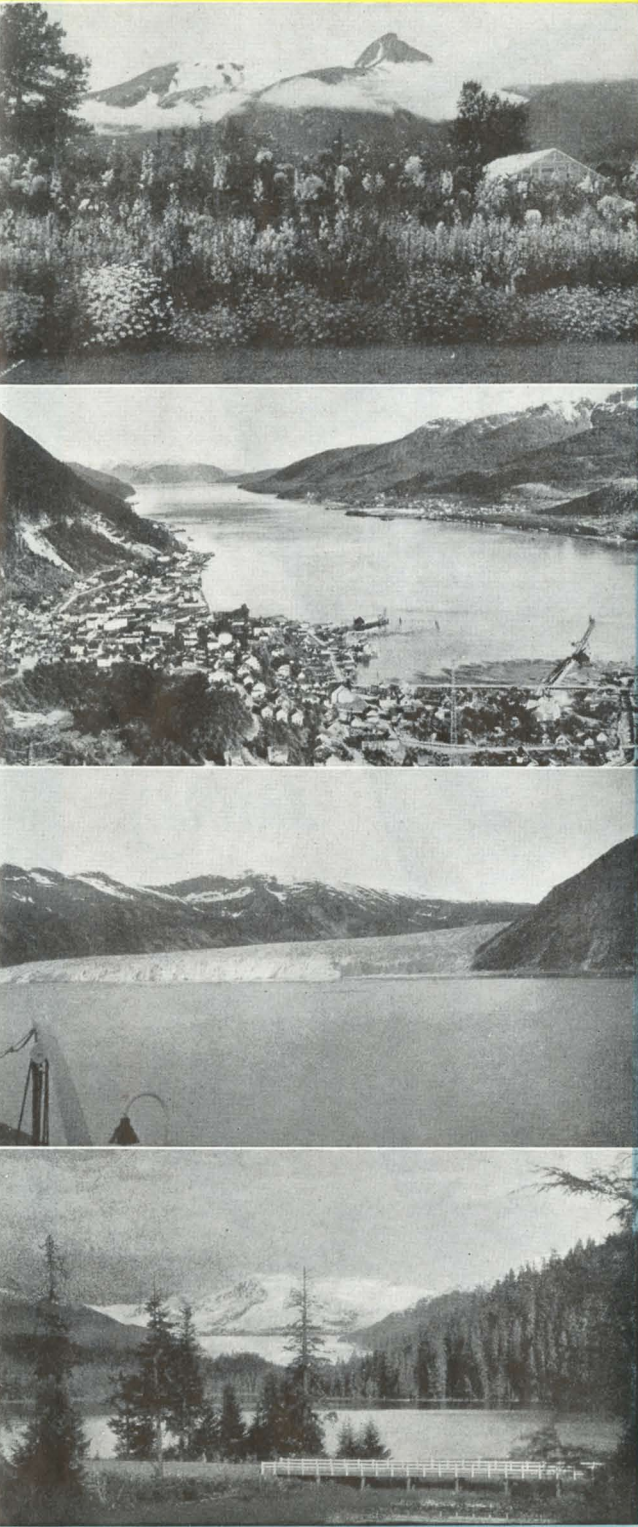
PRINCE ROBERT

6892 GROSS TONS
June 28, July 12, July 26, August 9,
1935



CANADIAN NATIONAL

Smooth Sailing and Gorgeous Scenery all the Way



CRUISE on untroubled waters to Alaska. Never out of sight of land, you sweep past towering mountains, their peaks hooded in snow and clouds, their feet bathed in the placid waters of the Inside Passage.

There are three great Inside Passages in the world. The first is that through the famed Norwegian Fjords; the second skirts the shores of Chili, the third and most picturesque that along British Columbia's coast.

From Vancouver, with its historic Stanley Park and its guardian Lions, the "Prince Robert" begins its scenic journey of 1,300 miles to Skagway. You may, however, arrange to join the cruise at Prince Rupert, Canada's most northerly port on the Pacific. Passengers from Seattle or Victoria enjoy the same fare basis as those from Vancouver.

The "Prince Robert," leaving Vancouver in her wake, glides past the north coast of Vancouver Island to cross Queen Charlotte Sound and later stop for three hours at Ocean Falls, nestled on a green hillside and flanked by a huge paper mill. Then the course is via Gardner Canal and Douglas Channel, narrow mountain-guarded seaways, to Prince Rupert, where the passenger may again disembark. This interesting city is on Kaien Island, at the mouth of the Skeena River. It is a transcontinental railway terminal, but you will be most interested in its great halibut fleet and salmon fishing activities.

Forty-five miles after leaving Prince Rupert, the "Prince Robert" crosses the border line to Alaskan waters and proceeds to the port of Ketchikan, where the primitive and modern in exotic cross-sections may be seen during the five-hour stop.

Alaska — The Great Country

The Aleuts called it "Alaskak," meaning The Great Country, and though English-speaking peoples dropped the final "K," The Great Country it remains.

A thousand echoes repeat the roar of the ship's siren as Ketchikan fades astern. By way of Tongass Narrows, Clarence and Sumner Straits and other channels, the "Prince Robert" steams toward Sitka on Baranof Island. Snow-clad mountains rise from 2,000 to 4,700 feet above sea level over the entire length of this island. The Sound, fourteen miles long and ten miles wide, through which Sitka is approached from the sea, brings us to the onetime capital of Russian Alaska. Its

cathedral recalls the brilliance of Imperial Russia, and there are many other points of interest to inspect during your eight-hour stay.

Then, en route to Juneau, comes Taku Glacier, one of the most thrilling sights of the voyage. A boundless ice-field, mother of a hundred glaciers, Taku provides new thrills for each of the thirty minutes' devoted to its close inspection.

Juneau, capital of Alaska, has many fascinations. Its historic museum contains rare examples of Indian and Eskimo art. The gold mining activities are full of interest. Some visitors will motor across Gold Creek and along the famous Glacier Highway to Mendenhall Glacier, for the evening is at their disposal for sightseeing.

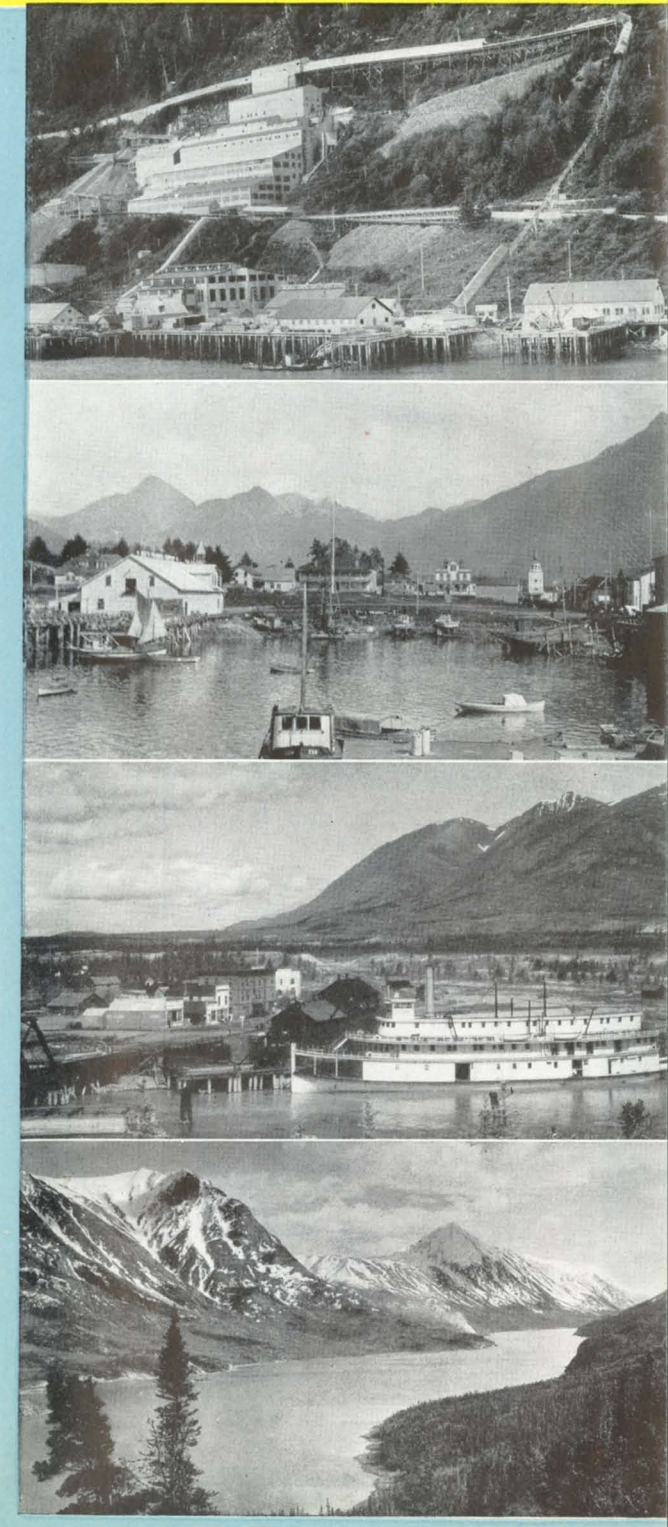
Leaving Juneau, the "Prince Robert" steams through the mountain-bordered Lynn Canal to Skagway, where the Yukon "Trail of '98" begins. Here is a community which was born of and lived through the world's greatest gold stampede.

The Trail of Gold

One-day and two-day tours have been arranged for the stop at this colorful port. The first takes one to Bennett, in the Yukon, over the Yukon and White Pass Railway. The second, by rail over White Pass, along Lake Bennett and on to Whitehorse at the headwaters of the Yukon River or, as an alternative, by rail to Carcross where a steamer is boarded for the trip down Lake Tagish to the end of West Taku Arm, returning in time for an inspection of Skagway before again boarding the "Prince Robert."

With farewells said, the southbound journey begins. Calling again at Juneau, the "Prince Robert" proceeds to Wrangell, one of Southeastern Alaska's oldest communities, with its totem poles and Indian carvings. On the southward journey a stop is made, between Prince Rupert and Vancouver at Alexander MacKenzie's Rock, commemorating the first crossing of Canada by land in 1793.

The cruise almost completed, there yet remain the delights of renewed acquaintance with the sheltered seas as the vessel winds her way beside the mountains to Vancouver. The cruise ends with its passengers relaxed and refreshed, delighted with their experience in The Great Country.



1.—An Alaskan gold mill.
2.—Sitka, rich in historic scenic appeal.
3.—Carcross, transfer point for trips to West Taku Arm and Lake Aitin.
4.—Lake Bennett, one of the most exquisite mountain lakes in the world.

RETURN PASSENGER RATES

11-Day Cruises... T.S.S. "Prince Robert"... Vancouver, Sitka, Skagway and return.

(No extra cost for passengers from Seattle or Victoria)

Deck	Rooms	Rate	Deck	Rooms	Rate
Deck "B"	Rooms 1 to 12 and 14 to 41 incl. — Single Bed and Pullman Upper Berth.....	\$110.00	Deck "D" — (Con't.)	Rooms 220, 221 and 224 to 227, incl., 230 to 233 incl., 236 to 239 incl., 242 to 245 incl., 248 and 249 — Single Bed and Pullman Upper Berth, Shower and Toilet.....	\$135.00
	Rooms 106 to 113 incl. — Single Bed and Pullman Upper Berth.....	\$100.00		Rooms 228, 229, 234, 235, 240, 241, 246 and 247 — Single Bed and Pullman Upper Berth.....	\$100.00
Deck "C"	Rooms 114 to 157 incl. — Single Bed and Pullman Upper Berth.....	\$110.00	Rooms 251 to 261 incl. — Single Bed, Sofa Bed and Pullman Upper Berth.....	\$100.00	
	Rooms 200 and 201 — DeLuxe Rooms with Double Bed, Bath and Toilet.....	\$155.00	Special DeLuxe Suites "F" and "G" — Two Single Beds with Sitting Room and separate Bathroom.....	\$215.00	
Deck "D"	Rooms 202 to 219 incl. — DeLuxe Rooms with Twin Beds, Bath and Toilet.....	\$155.00			
	Rooms 222 and 223 — Single Bed.....	\$120.00			

Fare includes meals and stateroom accommodation enroute but not on board steamer while in port at Skagway. Fares quoted as applying between Vancouver and Skagway will also apply for passengers embarking at Prince Rupert and proceeding from there to Skagway, returning to Prince Rupert, or Vancouver, or vice versa.

BERTHING PLAN — T.S.S. PRINCE ROBERT

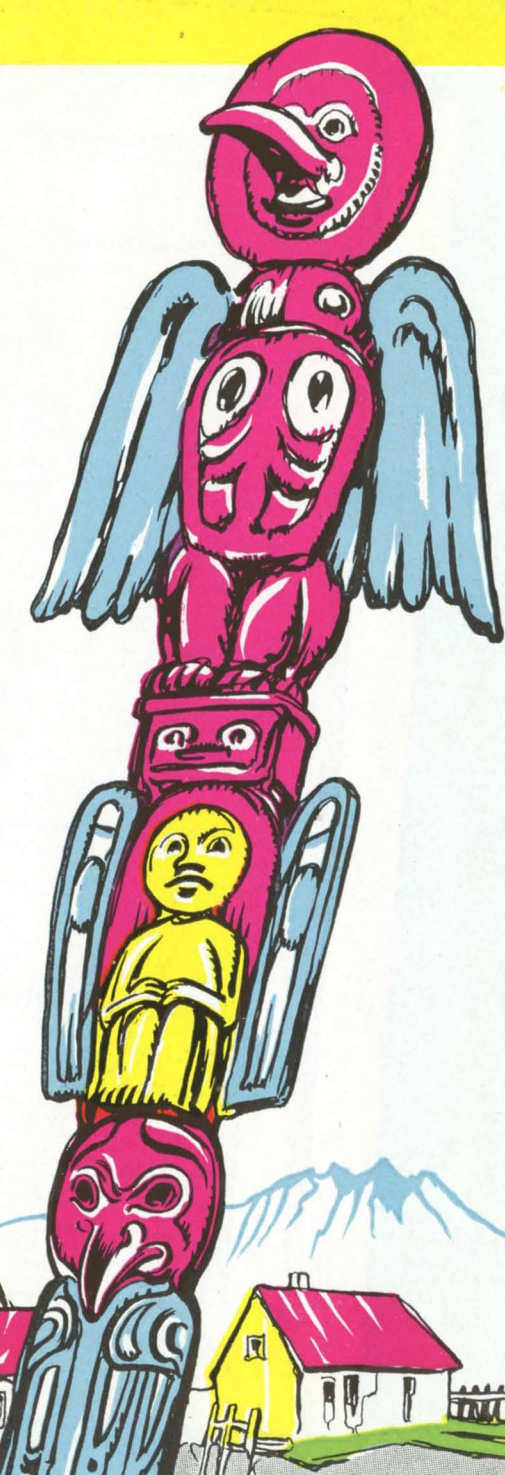
Completeness of Equipment

THE pleasure and delights of this tour are greatly enhanced by the seaworthiness, the luxury of furnishings and completeness of equipment of the "Prince Robert," which maintains in every respect the very high reputation established by Canadian National Steamships.

The "Prince Robert" (6,892 gross tons) has a speed of 23 knots. First class passenger accommodation is confined to three decks, the upper, bridge and promenade. The public rooms, the observation room, the parlor lounge and the smoking room are spacious, light, airy and most inviting, handsomely decorated and furnished. The cabin accommodation evidences the same careful attention to detail of equipment, arrangement and decoration as marks the public rooms. All rooms are outside rooms, with running hot and cold water.

Mechanical ventilation on the thermotank punkah louvre system assures an ample supply of fresh air, and in conjunction with the efficient heating system affords a balanced temperature in all climates.

The "Prince Robert" is equipped with the most modern receiving and transmitting wireless apparatus, and is also equipped for the reception of radio broadcasting. The "Prince Robert" carries a high class orchestra to provide music for the entertainment of passengers. The steamer is equipped for the transmission of music to lounges and other public rooms.



- D.T. Dressing Table
- W.R. Wardrobe
- S.B. Shower Bath
- T.B. Tub Bath
- W.C. Toilet
- A. Bed
- B. Double Bed
- C. Folding Pullman Upper Berth
- D. Sofa Bed

