

JASPER PARK LODGE

Canada's Distinctive Bungalow Hotel

JASPER NATIONAL PARK - CANADIAN ROCKIES

CANADIANS—and their visitors—are indeed fortunate. Within the Dominion are found areas of varied beauty. Towering mountain peaks, age-old glaciers, placid lakes and verdant valleys vie one with another for attention. Every province has its beauty spots. Some of the most charming of these have been set aside as national parks for the perpetual enjoyment of lovers of the unspoiled out-of-doors.

Of the great national playgrounds, none offers more varied attractions than does Jasper National Park in the heart of the Canadian Rockies. More than four thousand square miles—a veritable empire of virgin loveliness—are encompassed within its boundaries. The area offers every attraction for the holiday seeker.

Hundreds of mountain peaks, many of them yet unclimbed, as many yet unnamed, pierce the very clouds and challenge the Alpinist to his greatest endeavor. Huge glaciers and ice-fields stretch down from peaks to the valleys below. Beautiful lakes, majestic in their scenic setting, mirror towering mountains in their placid blue waters. Streams,

varying from the brawling mountain torrent to the mighty river intersect this greatest of Canada's national playgrounds. Forested valleys, tree-clad slopes and alpine meadows are alive with game animals, large and small, and with bird life.

Jasper National Park is a haven of refuge for its wild inhabitants. It is no less a haven of enjoyment for the human visitor. Here is forgotten the hurry and bustle of modern existence, the noise and dust of cities and the hurly-burly of the workaday world. Here, it is true, man has made his influence felt but only to the extent that he has made Nature in her grandest moods more accessible.

Cradled amid majestic snow-clad peaks are shady green lawns and gravelled tree-girt walks, tennis courts, a heated swimming pool, and a golf course second to none in its championship calibre and scenic surroundings. Bridle paths and motor highways radiate in all directions from Jasper Park Lodge, a distinctive Canadian National Railways' bungalow hotel, planned to harmonize with its magnificent surroundings.

This national playground offers every vacation sport amid surroundings of breath-taking beauty



Come to Jasper for the vacation of your dreams. Its entrancing memories will last a lifetime

JASPER—IN A PICTURESQUE SETTING

From the moment the visitor leaves his train at Jasper town he realizes that here is a vacation area which is distinctive. Here are wide gravelled streets and roads, modest charming homes and beautiful flower gardens all in harmony with their surroundings. The Administration Building, the headquarters of the Superintendent and Wardens of this great National Park, takes the eye immediately the visitor has alighted from his train beside the magnificent totem pole which stands in the station grounds. On the station platform he will probably first encounter the Mounted Police, and



Maligne Lake district receives outspoken praise from all who have been fortunate enough to visit it.



On the "Continental Limited" you arrive at Jasper station rested and refreshed.

representatives of these "Riders of the Plains" may later be met on trail or highway, their uniforms of "scarlet and gold," their jingling spurs and well-accounted horses providing an additional touch of color to an already colorful landscape.

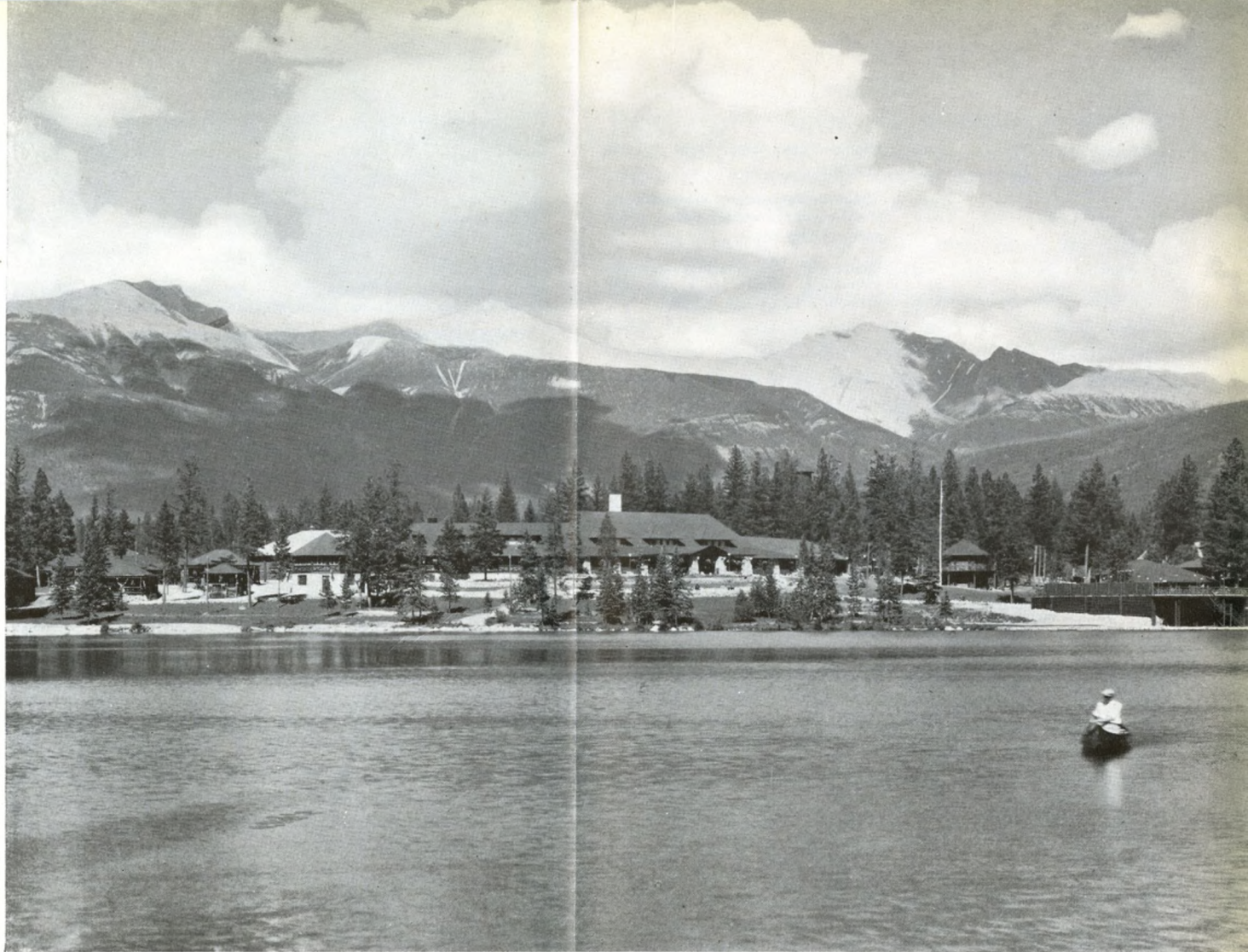
JASPER PARK LODGE

Jasper Park Lodge is unique in many respects. The main lodge, largest single-storey log structure of its kind in the world, comprises a spacious lounge, dining rooms, ball room and other public rooms and administrative offices. In the wings are a limited number of bedrooms for guests who prefer their accommodation in the main building. The majority of guests, however, find their sleeping accommodation in the bungalow cabins, avenues of which encircle the shore of beautiful Lac Beauvert. These cabins vary in size from four to sixteen bedrooms. Two of them are entirely self-contained, with bedrooms, living quarters, dining room, kitchen and servants' quarters. All of the cabins are steam heated and every room has running hot and cold water, telephones, electric light and the majority have private baths.

The builders of Jasper Park Lodge drew upon the surrounding forests and mountain-sides for their materials. Not only were logs and native boulders used in its construction, they were utilized also for decorative purposes. In the spacious lounge of the main lodge, where guests gather for their evening discussions, for bridge or to listen to orchestral music



The Cavell motor trip affords an ever-changing series of striking and beautiful panoramas.



Jasper Park Lodge with its broad, flower-bordered lawns sweeping down to the edge of Lac Beauvert.



Charming and comfortable are the individual log bungalows.

Right—Twin beds and every comfort.

The unerring sense of the appropriate is evident in every detail in the main dining room.

Below — The inviting outdoor swimming pool is a popular attraction to Lodge guests.



while contemplating night's descent upon the surrounding peaks, a huge double fireplace of native stone radiates a cheerful glow. Curiously twisted boles and branches of trees are cunningly wrought into decorative screens and other features. Mounted heads and skins of big game animals, taken from the hunting territories just beyond the Park boundaries, decorate the walls, furthering the log chalet atmosphere which prevails.

Jasper Park Lodge has accommodation for six hundred and fifty guests. Its cool, spacious dining room, where the fruits of bountiful and well-ordered kitchens are served, seats five hundred persons at the one time.

Adjacent to the Lodge are excellent tennis courts, while just beyond the velvety lawns which stretch from the verandahs down to the shore of Lac Beauvert stands a splendid open-air swimming pool, its depth graded down to provide a wading end for children. Here the guest finds the pure, sparkling water of the mountain streams and lakes warmed to a comfortable degree, a necessary measure since these glacial waters have a very low temperature.

THE MAGIC SPELL OF A VACATION LAND

To the traveller, fresh from the strain and noise of modern cities, the first impression of Jasper Park Lodge is one of blissful restfulness and peace. The silences of the forest, the wide spaces of the Athabaska Valley, the serenity of the massive peaks which rise to the clouds on every hand, the exquisitely colored Lac Beauvert (the beautiful green lake) stretching in front of the Lodge, these seem all that the tired vacationist could ask. In the evening he may sit on the verandahs of the Lodge or loll in the comforts of an easy chair on the lawns to watch the changing lights over Mount Edith Cavell's snow-clad peak or over the brilliant slopes of Pyramid.

There, with the strains of orchestral music floating to his ears, he may contemplate Nature's changing moods and congratulate himself upon having found the ideal spot for the perfect rest.

The magic of mountain air, however, may change his plans. He will feel a new blood coursing through his veins, encouraging him to greater efforts than he deemed possible on arrival. He will wish to see for himself what lies beyond yon mountain range, to learn what it is that has made the Jasper Park golf course one of the outstanding tests of golfing ability, to feel and to hear again the creak of saddle leathers beneath him. Mountain air does not encourage indolence, at least not until one has enjoyed the out-of-doors to the full and returned to the Lodge healthily tired by bodily exercise.

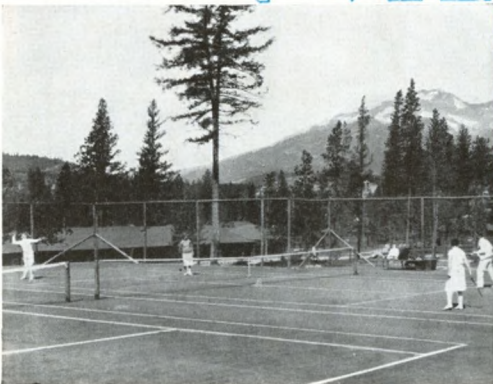
The lounge, in the Main Building, is spacious and inviting.





Charming in atmosphere,
delightful in climate, bountiful
in diversion — *that is Jasper.*

Fast courts speed up your game.



The Ballroom serves for dancing, concerts and conventions.



There is no dearth of immediate scenic attractions for the vacationist who makes his headquarters at Jasper Park Lodge. From the window or verandah of his lakeshore cabin or from the wide verandah or lawn fronting the main building, he discovers awe-inspiring peaks on every hand. Across Lac Beauvert stands the snow-clad peak of Mount Edith Cavell, thrusting skywards, with the Glacier of the Angels dependent on its slopes. The peaks of Hardisty and Kerkeslin greet him as he turns to continue the panorama. In the one direction lie the serrated peaks of the Colin Range, Roche Bonhomme (the Old Man of Jasper), outlined against the skyline. Directly ahead, perhaps, is Pyramid, one of the Rockies' most colorful peaks, while in the distance stands the massive Roche Miette guarding the eastern entrance to the broad expanse of the Athabaska Valley.

Gone is that feeling, prevalent at many mountain resorts, of being confined in a narrow valley with perhaps but one view to be enjoyed. Instead there is a feeling of roominess, of space for enjoyment, of a playground centre surrounded, but not hemmed in, by the magnificent, towering peaks which provide the jagged sky-line effect.

Nature made the playground. Man made it more enjoyable, bringing the comforts of modern civilization to Jasper Park Lodge. Not a big city hotel transplanted to the mountains, but a series of bungalows constructed of native logs and boulders, grouped around a main lodge—a hostelry which provides every comfort, service and convenience for the visitor, yet blends so perfectly with its environs that it seems part of Nature's original plan.

At every hour of the day at Jasper, Mt. Edith Cavell presents a marvellous picture. From Jasper Park Lodge all eyes unconsciously turn to its serene cloud-draped summit reflected in the smooth surface of Lac Beauvert. Its beauty irresistibly impels one to seek a closer view.



Top—Well laid paths encircle Lac Beauvert.

Centre—The Rock Garden.
The Lodge lawn.

Bottom—The drive to Athabaska Falls
reveals notable members of the Whirlpool
group of mountains.



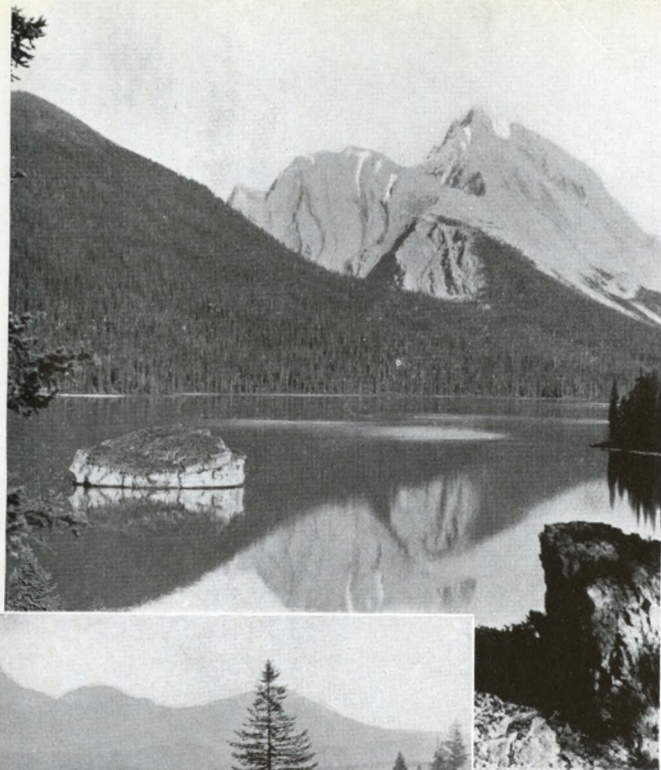
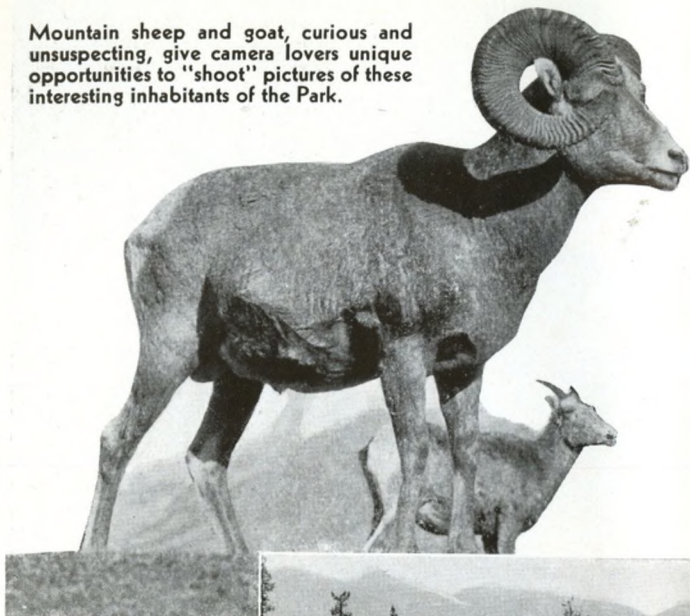
MOTORING IN THE PARK

About one hundred miles of excellent motor highways have been constructed within the boundaries of Jasper National Park. These radiate in different directions from Jasper Park Lodge. One may ride at ease to view the mysteries of Maligne Canyon or ascend in a series of switchbacks and hairpin bends from the level of the Athabaska Valley to the very foot of the moraine of Mount Edith Cavell's Glacier of the Angels. Or one may ride to Pyramid Lake and mountain, along the Pochontas game trail or beside the tumbling Maligne River to the foot of Medicine Lake where motor boats await for continuance of the journey on toward superb Maligne. Now there is a new thrill, that of riding with all the comforts of modern automobile travel, out for some forty miles toward the great Columbia Icefields. The highway, which will eventually connect the national parks of Canada's northern and southern Rockies, leads through an area of scenic grandeur to the foot of Sunwapta Falls, presenting a vista of loveliness hitherto accessible only to the more adventurous traveller who rode the pony trails beyond the passes.

The automotive equipment of Jasper Park Lodge includes luxurious passenger automobiles and buses. The chauffeurs are all experienced drivers, chosen only after they have passed rigid driving tests. They are young men of high calibre, each well versed in the history and lore of the National Park and they are competent guides who add to the pleasure of their patrons' journeys as they relate stories and incidents concerning the Park and its historic features. In addition to the organized drives, which are arranged daily during the season, cars are available for private hire for short or long periods by guests at the Lodge who may desire this service.



Mountain sheep and goat, curious and unsuspecting, give camera lovers unique opportunities to "shoot" pictures of these interesting inhabitants of the Park.



Maligne Canyon is one of the most interesting examples of Nature's handiwork in the way of natural carving, with uncounted ages to work in and with rushing water as her tool.



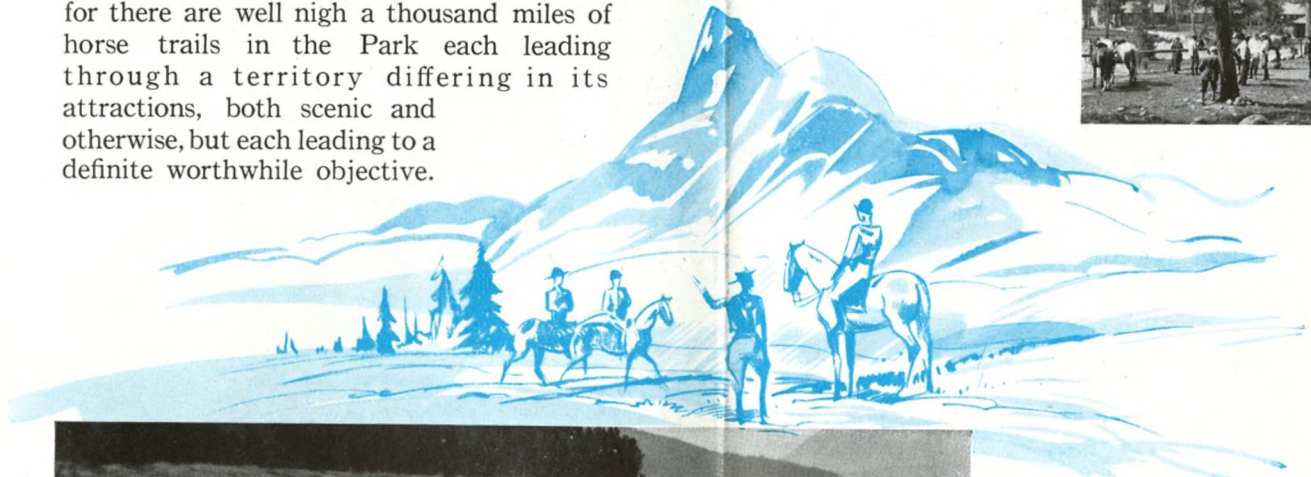
Mount Sampson, 10,000 feet, one of Maligne Lake's guardian peaks.

FOLLOW MOUNTAIN TRAILS

There is perhaps no more enjoyable way of seeing the mountains than through the medium of saddle-horse journeys. Mountain ponies are chosen for their sureness of foot rather than for their show-ring qualities. They are selected for their ability to follow mountain trails, to thread their way through boulders and protruding tree-stumps without stumbling, to ford mountain torrents and pick their way over deadfalls. They and their companions the packhorses, are the ships of the mountains as the camel is the ship of the desert. The trail rider finds a cavalcade of sure-footed mountain ponies, together with efficient guides, available for his use. Fred Brewster Limited, in whose hands the official outfitting for Jasper Park Lodge has been placed, is an organization well equipped with horse and manpower, with camping and other equipment to ensure comfort and efficient service to those who would journey out beyond the passes.

In addition to many short saddle trips which may be enjoyed in the immediate vicinity of Jasper Park Lodge, numerous longer rides may be taken. The tourist may plan for himself a journey into the mountains which will take him away from civilization for a week, a month or for the entire summer if he so desire. With guides and horse-wranglers and cooks he may venture forth for any distance, for there are well nigh a thousand miles of horse trails in the Park each leading through a territory differing in its attractions, both scenic and otherwise, but each leading to a definite worthwhile objective.

Sure-footed mountain ponies are available for a morning ride, for a day's trip on the trail, or with added pack horses and guides for an extended trip over the passes to distant valleys and lakes. There is an endless variety of hiking trips throughout the Park.



To appreciate this mountain kingdom to the full, get astride a pony and go a-riding. There are hundreds of miles of trails and every mile is a challenging urge to action.

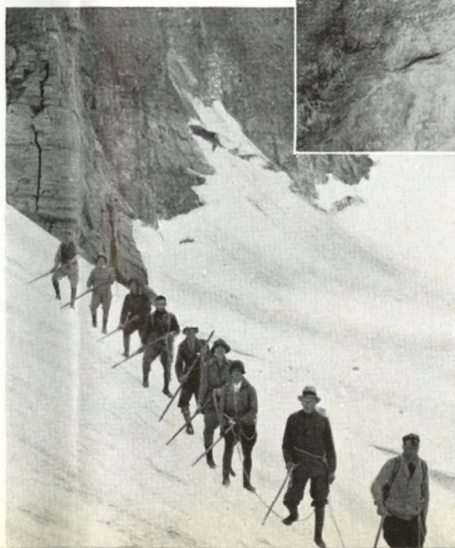
The broad valley of the Athabaska, with its many channels and open meadows, gives a sense of freedom and spaciousness often lacking in mountain regions. This noble river, with many tributaries, offers to the artist a scene seldom found within the same compass. Mounts Kerkesin and Hardisty are seen in the distance.





These trails are in themselves a delight to the lover of out of doors. Now in the valley beside hurrying stream or placid mountain lake, now picking their way through the forests of balsam and groves of aspen where the shy wild things pause half hidden to inspect their human visitors, now struggling to the wind-swept uplands and the Alpine meadows, these skyline trails go their seemingly careless way, vagrant byways of unending charm.

Jasper Park offers an almost bewildering choice to the alpinist. Mountain climbers in the Tonquin Valley.



If the gods of the hills indulged in secret wassail, one could imagine no better place than this charming spot — Punch Bowl Falls, on the Poochontas drive.



The golf club house.



IF YOU CRAVE GOLF ...

The Jasper Park Golf Course is a story in itself. This championship course of 18 holes follows the contours of the wide Athabaska Valley, providing fairways which are keenly trapped and ever full of danger for the careless player while equally full of reward for the man or woman who plays a perfect shot when such is called for. Par is hard to beat on this magnificent course, but, except during the period of the Annual Totem Pole Tournament, few worry greatly about par. There is sufficient thrill in playing over such a course, where at every stroke one must struggle between the inclination to raise the head to view magnificent scenery and the old injunction to "keep the heid doon an' the e'e on the ba'." There are yawning bunkers for the unwary and beautifully contoured greens to hold the well-played stroke; there are water holes where one's tee shot must be high and clear over corners of Lac Beauvert to avoid that dread "stroke and distance" penalty all golfers abhor. There are long, short and medium tees, the playing of which in successive rounds provides new features in this golf course. One may inadvertently slice a ball into the rough and there come upon a playful bear cub, or one may round the trees on a dog-leg hole to find himself stymied by a beautiful deer and her fawns, frisking on the fairway. There are many things which may and do happen to vary the experiences of a game over this magnificent course where par, though difficult of attainment, is as nothing compared with the joy of play over a perfect links set amid such wondrous surroundings of snow-clad peaks.

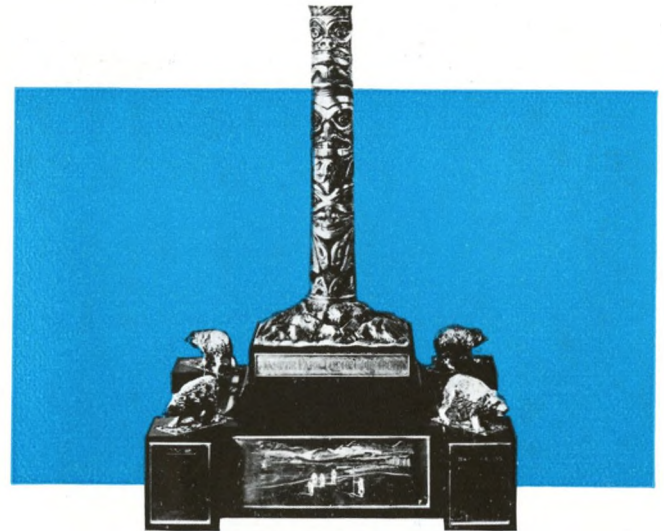
Retrospect of the sixteenth green and fairway—your second shot must carry a small bay of Lac Beauvert.



One of the golf events of the year in Western Canada is the Totem Pole Tournament, the Annual Golf Week at Jasper Park Lodge when the best of golf amateurs strive for the honor of winning the silver totem pole and other prizes which are awarded for men and women players in competition on this famous course. The Jasper Park course, a delight to the golfer at any time, becomes doubly attractive during this period when, in championship trim, it stretches before those who would annihilate Old Man Par. Since its inception eight years ago, Jasper Golf Week has been an institution of growing importance in the activities of golfers in Canada. Players from all parts of Canada, the United States and other countries, take part in the competitions, which are planned for both ladies and gentlemen, but it is from the Canadian West and from the Pacific

Keenly trapped fairways, yawning bunkers and beautifully contoured greens test the skill of the golfer here. The exhilarating air and inspiring setting stimulate players to the top of their form.

The Totem Pole Trophy, emblematic of the championship of Jasper Park Annual Golf Week. A replica of this trophy is presented to the winner.



Coast cities of both Canada and the United States that the strongest contingents of players come. Then, Jasper Park Lodge and the golf club house take on all the activities and attractions of a well-organized golf club. There is that friendly competitive tournament atmosphere as the stronger players strive against one another, the winners in previous years to consolidate their positions and their competitors to gain new laurels. There are team competitions, when representatives of the different Provinces and States vie with one another for supremacy. There are special events for the ladies and competitions against par. In fact, there is a complete week of keen competitive golf over a course which is second to none in its demands upon the player and in the satisfaction which follows a low-score round.

SHY FRIENDS ALONG THE WAY

The big game hunter who visits Jasper National Park is not forgotten. Within the Park boundaries he must confine himself to hunting with a camera, for this great National playground is a game sanctuary in the strictest sense of the word where guns and hunting dogs are forbidden. Along the gravelled walks, the highways and the trails, the camera hunter is in his element. Shy mule deer and mountain sheep, moose and other animals pose for him during his journeys. If he goes far enough afield he will encounter the wily Rocky Mountain Goat, dweller in the higher altitudes, as he makes his way down to drinking pool or to medicine lick. Bears are numerous. Mountain caribou frequent the higher passes and here also may be found the grizzly bear, unsociable at all times, and entirely unlike his cousins, the black and brown bear, which welcome human company and the good eatables with which he associates tourists.

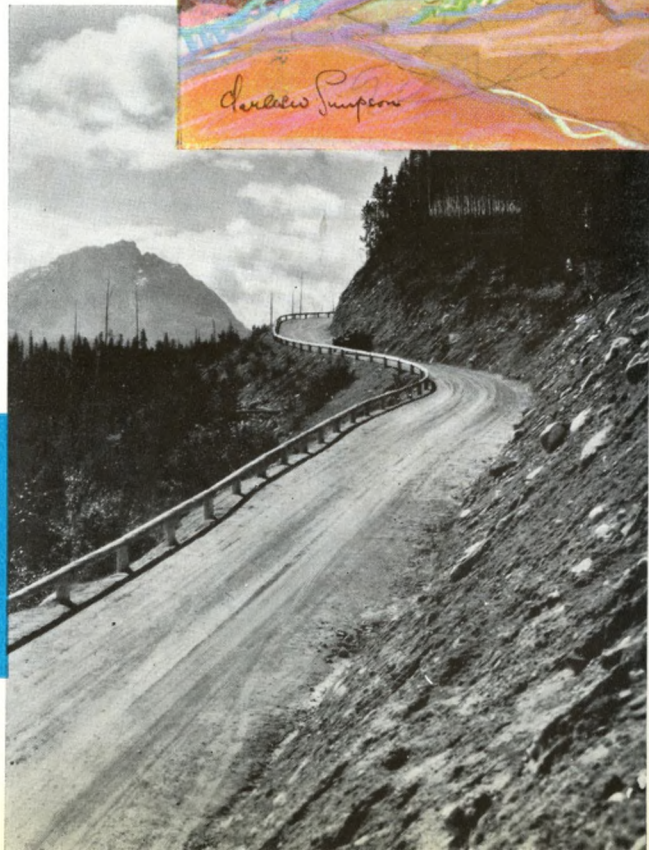
The big game hunter who desires trophies to adorn his den or club must go beyond the Park boundaries, but he will find plenty of sport awaiting him there. Outfitting at Jasper town he will journey out beyond the Park to the hunting areas in any direction and there find that the animal population has increased, due to the overflow from the breeding grounds within the Park. Deer, moose and caribou; Bighorn Rocky Mountain Sheep and Rocky Mountain Goats; black and grizzly bears are all there for the intrepid sportsman who desires trophies of the chase and experienced and capable guides and outfitters are prepared with their equipment to take him out into the higher valleys in search of his game.

SCALING ALPINE HEIGHTS

Yet another type of visitor to Jasper National Park—the Alpinist—finds that this area has many attractions. Some of the most difficult peaks in the Rockies lie within its borders. On the western border stands mighty Mount Robson, monarch of all peaks. In the Tonquin Valley the Ramparts Range offers such tests of climbing as Geikie, Redoubt and The Bastion, while in the Maligne Lake area are peaks like mighty Mount Warren and others, fit tests for the hardiest of climbers. The Alpine Club of Canada holds many of its annual meetings in Jasper National Park where excellent peaks are found for qualifiers as well as for the assaults of more experienced climbers.



Bears and mule deer with their delicate grace and fearlessness, add much of wild life interest in the Park.



Glacier of the Angels, objective of the Cavell Drive and one of Jasper's most impressive sights. The form and shadings of the glacier present the appearance of an angel with outstretched wings.

The drive to Glacier of the Angels (Mount Edith Cavell),

FISHING IN A PLEASANT ENVIRONMENT

The tale of Jasper National Park and its attractions for all classes of holiday seekers is as yet incomplete. What of the angler who seeks in all this area of beauty a place to play his artificial fly for the wily trout? For him there is a veritable paradise, newly created in the Maligne Lake waters. For years, Maligne Lake, largest body of glacial water in the Canadian Rockies attracted beauty lovers and Alpine climbers. Yet to the fisherman it was a dead loss, since no fish of any species were found in its translucent waters. That has all been changed.

Today Maligne Lake, the Maligne River and Medicine Lake, as well as all connected waters abound with fighting speckled trout (*Salvelinus Fontinalis*) whose forebears made the journey on horseback from Jasper, over the passes to Maligne Lake. Prior to 1927 Maligne Lake was barren of fish. Now it is one of the finest speckled trout areas on the North American Continent if not in the world. Scientific planting of speckled trout, plus the plentitude of fish food and the absence of predatory fish and other enemies made the experiment a success. Speckled trout of three, four, five pounds are not unusual. The National Park bag limits are generous and though one must register and take out a license this is without cost.

Whether in the placid lakes or in the brawling Maligne River which connects Maligne and Medicine Lakes, these fish rise readily to the fly when weather and water conditions are favorable. Maligne River offers some twelve miles of admirable, fast, fishing water with numerous pools where the "big fellows" hide out to await the arrival of toothsome morsels. At its head, where Maligne Lake empties and again at its foot, where the river feeds Medicine Lake are favored spots, for there are found good pools which are usually fruitful for the angler who can cast a deceiving artificial fly. The angler is not restricted to fly fishing, unless he desires to qualify for a membership in the Maligne River Anglers' Club. To obtain their cherished button he must land a speckled trout, weighing not less than two pounds,

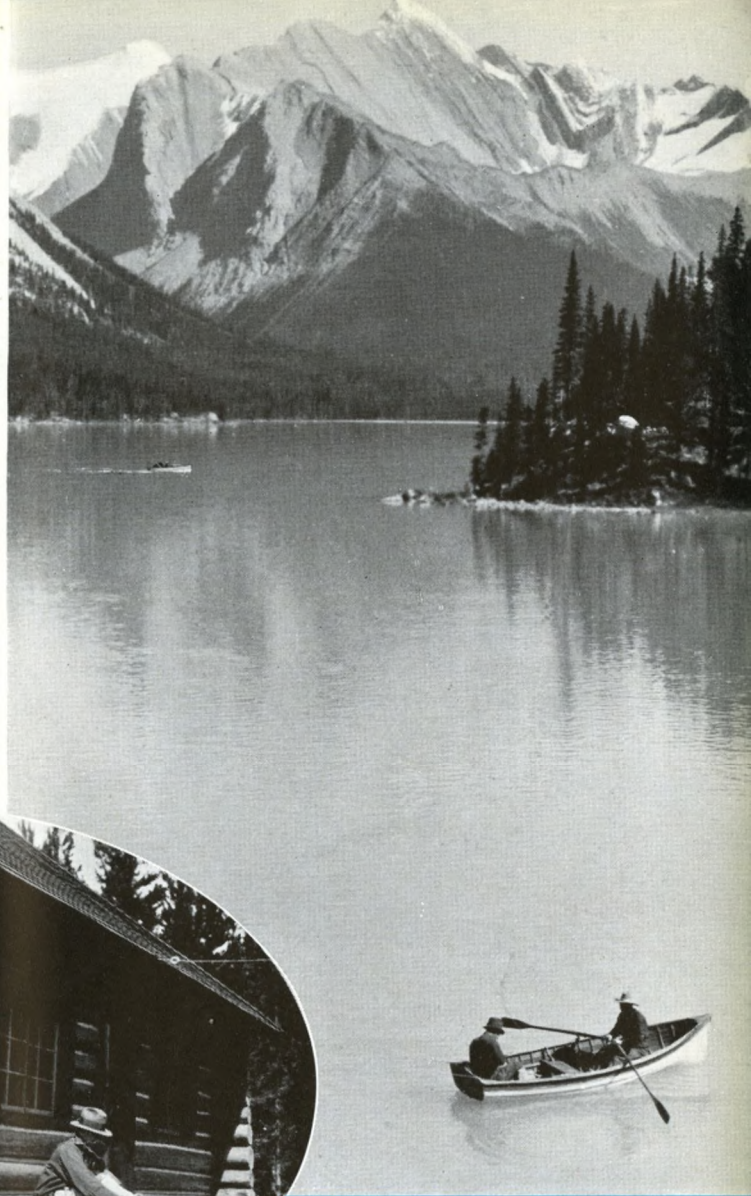
Amid scenes of incredible beauty, the Maligne River offers twelve miles of brawling water, stocked with fighting speckled trout.



on a regulation fly rod weighing not more than six ounces and with artificial trout fly of any pattern. Such fish may only be taken from the Maligne River between its outlet at Medicine Lake and the boom log which marks the opening stretch of the competitive waters at the foot of Maligne Lake.

Many are the anglers who will strive again, during this and succeeding years for the qualifying button of the Anglers' Club and, with favorable weather and water conditions, there will doubtless be many claimants. The big fish are plentiful and to the angler taking the largest during each season will be awarded the gold championship button of the Maligne Anglers' Club, while the runner-up will receive a silver button as proof of his prowess.

Excellent accommodation is available for those anglers who would make their visit to Jasper National Park a real fisherman's holiday by testing the waters of the Maligne Lake speckled trout area. At Medicine Lake and again at Maligne Lake are



Comfortable chalets on Medicine and Maligne Lakes afford accommodation for anglers and trail riders in this region of unrivalled mountain grandeur. Scenic marvels are unfolded to visitors through the service of boats and boatmen.





Sunwapta Falls, a spectacular example of glacial erosion. Sunwapta derives its musical name from the Stony Indian word meaning "the River of the Whirlpool."

comfortable log chalets, eminently suitable to provide all the necessary comforts after a hard day's fishing on lake or stream. Comfortable beds, plain but satisfying meals, cleanliness and courteous attention on the part of the staffs in charge guarantee that the angler or other visitor will enjoy his stay. Separate rooms equipped with spring beds are available at both Maligne and Medicine Lake chalets, and at Maligne Lake floored tents are also available.

Boats and boatmen are available at both lakes, and at Maligne one may choose between rowboat or gasoline motor boat for journeys up and down this magnificent, mountain-guarded lake. For those visitors who are not anglers, one could imagine no more delightful day's outing than a motor boat journey from the chalet to the other end of Maligne Lake with a delightful picnic lunch served on one of the gravelly beaches en route. In this outing the vacationist will penetrate a wonderland of magnificent peaks, delightful in their aspect from the chalets but even more entrancing as the motor-launch is driven by its powerful engine almost to the foot of these towering peaks, several of which exceed ten thousand feet in altitude.

There is other fishing in Jasper National Park. There are silvery rainbow trout in many lakes such as Wabasso Lakes and at the Beaver Dams; there are big Dolly Varden trout in Jacques Lake and within a short time there will also be angling for Kamloops trout in the beautiful lakes of the Tonquin Valley where trout of these species, planted a few years ago, have developed wonderfully and promise in a short time as good fishing sport as now prevails for speckled trout in the Maligne area.

THE HIKER MAY CHOOSE FROM AN ENDLESS VARIETY OF JOURNEYS

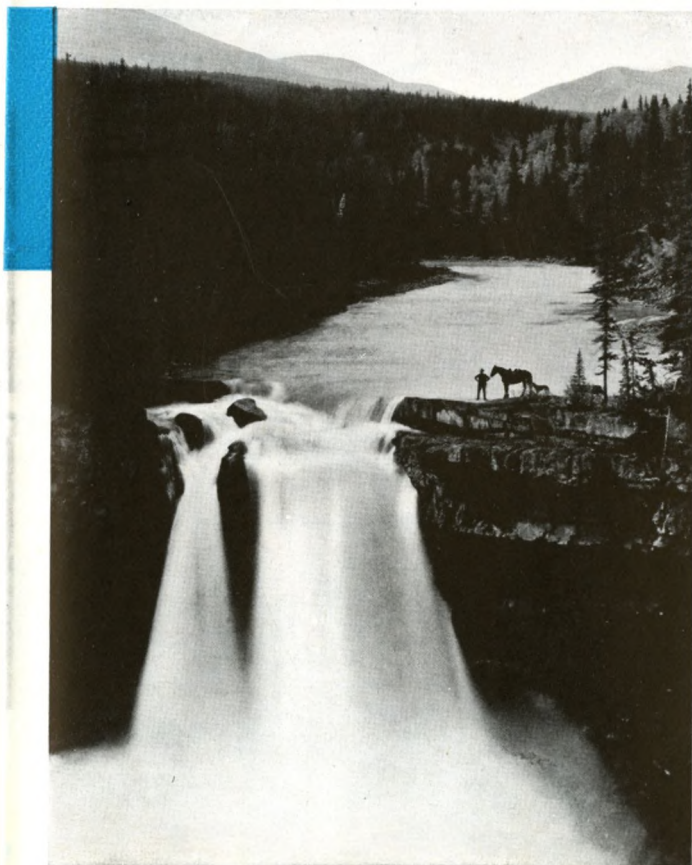
Wide, well-laid paths encircle Lac Beauvert and the golf course, leading to Lookout Point, to Signal Mountain and to other vantage points whence the surrounding terrain may be viewed at its best. These paths are ideal for the brisk morning or evening walk or the quieter midday stroll. On the longer hikes to more distant points, a guide and pack-horse are required to carry the impedimenta of camping. Such trips may extend for days or weeks, and the visitor is assured of helpful suggestions as to his journeys when he visits the Transportation Desk at the Lodge.

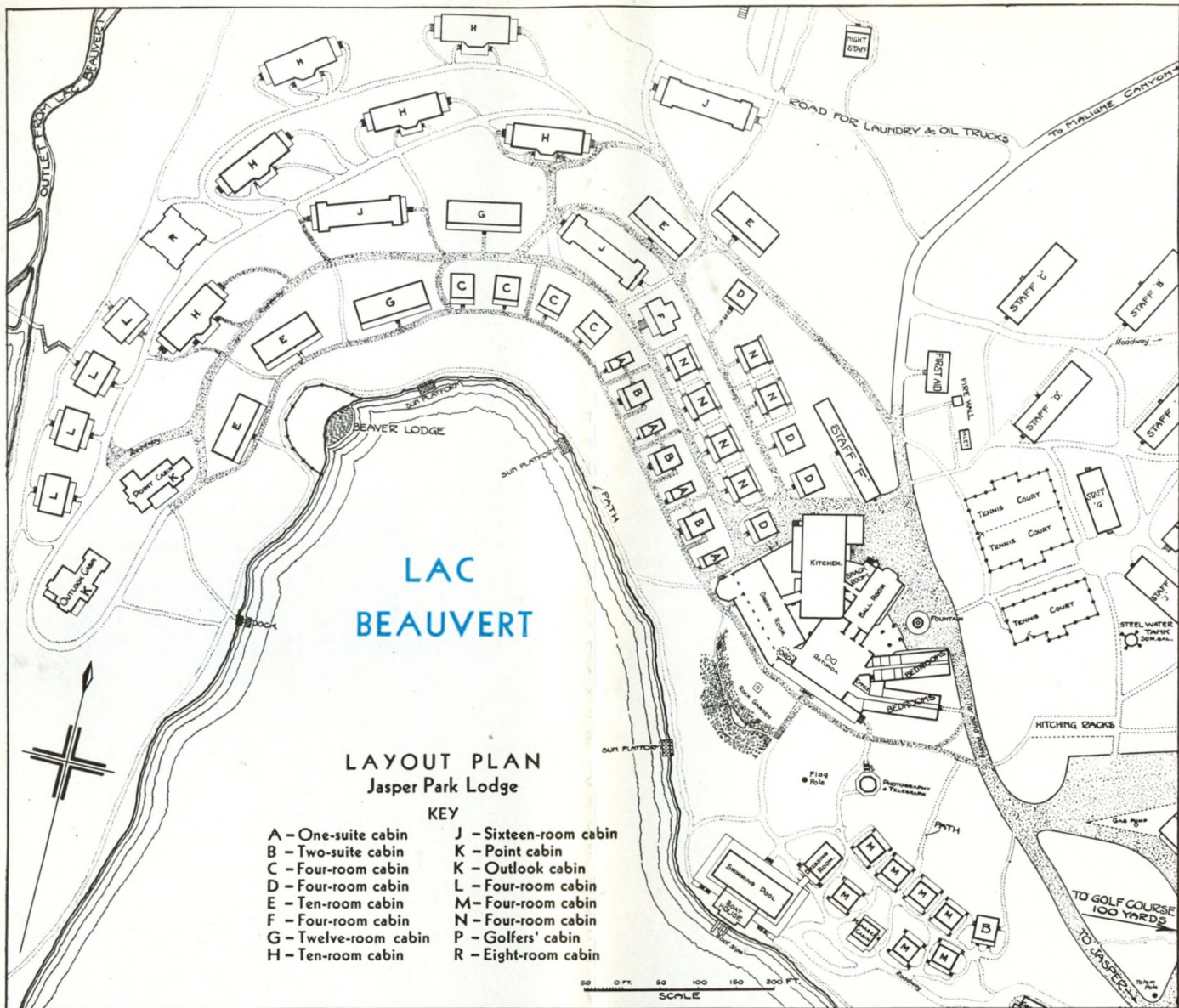
A FINAL WORD . . .

Jasper National Park it has been well said, has inducements to offer every vacationist. It is Canada's largest unspoiled natural playground, an empire of beauty set in the heart of the Rocky Mountains. Served by the transcontinental daily trains of the Canadian National Railways it is one of the Continent's most accessible holiday areas.

At the Transportation Desk at Jasper Park Lodge or from any Canadian National agent, there may be obtained a folder "What To Do At Jasper" which gives detailed information as to the organized drives and other activities together with suggestions as to the manner in which every moment of one's stay may be enjoyably occupied.

Snake Indian Falls. Here the river, a stream of considerable size, narrows to a gorge, and leaping downward in a magnificent fall of over eighty feet, showers the neighboring rocks and forest with great fountains of spray

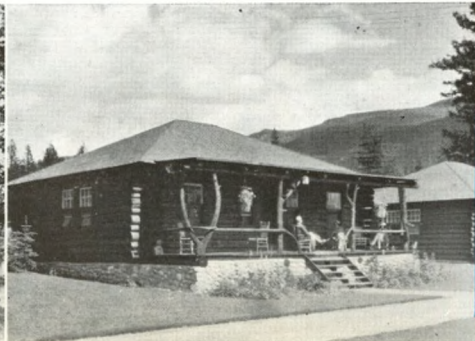




Point Cabin



Two-suite cabin



Four-room cabin

CANADIAN NATIONAL RAILWAYS

OFFICERS OF THE TRAFFIC DEPARTMENT

A. FRASER, Acting Vice-President, Montreal, Que.

C. W. Johnston	Gen. Pass. Traffic Manager	Montreal, Que.	R. Creelman	Passenger Traffic Manager	Winnipeg, Man.
A. A. Gardiner	Asst. General Pass. Traffic Man.	Montreal, Que.	Osborne Scott	General Passenger Agent	Winnipeg, Man.
R. L. Fairbairn	Manager, Pass. Service Bureau	Montreal, Que.	G. A. McNicholl	General Passenger Agent	Vancouver, B.C.
R. F. MacLeod	Man., Tariff and Ticket Bureau	Montreal, Que.	R. W. Long	Gen. Freight Traffic Manager	Montreal, Que.
C. K. Howard	Man., Tourist & Convention Bureau	Montreal, Que.	G. T. Pettigrew	Asst. Gen. Freight Traffic Man.	Montreal, Que.
A. M. Kirk	Gen. Pass. Agt., Steamship Traffic	Montreal, Que.	John Pullen	Regional Gen. Freight Agent	Montreal, Que.
E. C. Elliott	General Passenger Agent	Montreal, Que.	R. E. Perry	General Freight Agent	Toronto, Ont.
H. C. Bourlier	General Passenger Agent	Toronto, Ont.	Geo. R. Fairhead	General Freight Agent	Montreal, Que.
A. B. Chown	Passenger Traffic Manager	Chicago, Ill.	R. J. Foreman	Traffic Man., Foreign Freight Dept.	Montreal, Que.
W. R. Eastman	General Passenger Agent	Chicago, Ill.	E. F. Flinn	Freight Traffic Manager	Chicago, Ill.
M. F. Tompkins	Traffic Manager	Moncton, N.B.	W. G. Manders	Freight Traffic Manager	Winnipeg, Man.
R. J. S. Weatherston	General Passenger Agent	Moncton, N.B.			

PASSENGER AGENCIES

Canada and United States

Belleville, Ont.	H. C. Thompson	243 Front St.
Boston, Mass.	T. E. P. Pringle	186 Tremont St. (Masonic Bldg.)
Brantford, Ont.	J. T. O'Neil	153 Colborne St.
Brookville, Ont.	J. D. Fluker	Cor. King and East Market Sts.
Buffalo, N.Y.	W. J. Burr	420 Main St., Liberty Bank Bldg.
Calgary, Alta.	J. S. Peck	218 Eighth Ave., West
Charlottetown, P.E.I.	P. W. Clarkin	C. N. Rys. Station
Chicago, Ill.	C. G. Orttenger	4 South Michigan Blvd. cor. Madison, Willoughby Tower Bldg.
Cincinnati, Ohio	J. L. Bickley	Dixie Terminal Bldg. 49 E. Fourth St.
Detroit, Mich.	H. L. McCaughey	1523 Washington Blvd., Hotel Statler Bldg.
Duluth, Minn.	L. F. Lorentz	3044 West Grand Blvd.
Duluth, Minn.	P. A. Rooney	428 West Superior St.
Edmonton, Alta.	J. Madill	Cor. Jasper and 100th Sts.
Guelph, Ont.	S. C. Holley	11 and 13 Wyndham St.
Halifax, N.S.	J. J. Leydon	Cor. Barrington and George Sts.
Hamilton, Ont.	Jas. Anderson	7 James St. North
Kansas City, Mo.	W. H. Happ	705 Walnut St.
Kingston, Ont.	V. C. Hanley	145 Princess St.
London, Ont.	J. F. Gordon	430 Richmond St.
Los Angeles, Cal.	H. R. Bullen	607 South Grand Ave.
Minneapolis, Minn.	G. A. North	634 Marquette Ave.
Montreal, Que.	M. O. Dafoe	384 St. James St.
New York, N.Y.	F. A. Young	673 Fifth Ave.
North Bay, Ont.	C. E. Jenney	673 Fifth Ave.
Oshawa, Ont.	A. C. O'Neil	81 Main St.
Ottawa, Ont.	D. C. Forrester	3 King St. West
Peterboro, Ont.	P. M. Buttler	93 Sparks St.
Philadelphia, Pa.	Travel Information Bureau	Chateau Laurier
Pittsburgh, Pa.	J. B. Doran	324 George St.
Portland, Me.	M. J. Woods	1422 Chestnut St., Burlington Arcade
Prince Rupert, B.C.	J. E. Myers	505 Park Bldg., 355 Fifth Ave.
Quebec, Que.	G. A. Harrison	G. T. Railway Station
Regina, Sask.	P. Lakie	528 Third Ave.
San Francisco, Cal.	A. P. Bibeault	10 Ste. Anne St.
Saskatoon, Sask.	J. J. Aubin	234 St. Joseph St., St. Roch
Seattle, Wash.	E. G. Wickerson	Union Station
Sherbrooke, Que.	R. F. McNaughton	648 Market St.
St. Catharines, Ont.	Wm. Stapleton	101 Second Ave. South
Saint John's, N.B.	J. F. McGuire	1329 Fourth Ave.
St. John's, Nfld.	A. M. Stevens	23 Wellington St. North
St. Louis, Mo.	C. J. Harris	158 St. Paul St.
St. Paul, Minn.	L. C. Lynds	49 King St.
Sudbury, Ont.	A. Green	Board of Trade Bldg., 155 Water St. E.
Toronto, Ont.	W. E. Rudolph	314 North Broadway
Vancouver, B.C.	A. H. Davis	83 East Fifth St.
Victoria, B.C.	A. G. Bell	26 Elm St. West
Washington, D.C.	R. E. Richmond	N.W. Cor. King and Yonge Sts.
Windsor, Ont.	K. E. McLeod	527 Granville St.
Winnipeg, Man.	C. F. Earle	911 Government St.
Woodstock, Ont.	G. L. Bryson	922-15th Street N.W.
	G. E. Walker	364 Ouellette Ave. (Canada Bldg.)
	F. J. Creighton	Cor. Main St. and Portage Ave.
	N. A. B. Smith	408 Dundas St.

EUROPEAN REPRESENTATIVES

Cable Address "Canational" London

London, S.W. 1, Eng.	P. A. Clews, European Manager, 17-19 Cockspur St.
London, E.C., Eng.	G. E. Cowie, General Freight Agent. J. P. McClelland, General Passenger Agent.
Liverpool, Eng.	E. A. Novis, City Agent, 44 Leadenhall St. H. V. Caldwell, Dist. Pass. Agt., 19 James St.
Manchester, Eng.	E. L. Roper, District Freight Agent. R. J. McEwan, District Traffic Agent, 40 Brazennose St.
Birmingham, Eng.	J. A. Cross, Dist. Traffic Agt., 326 Broad St.
Newcastle-on-Tyne, Eng.	Messrs. H. Burt & Co., Passenger Agents, 14 Shakespeare St.
Southampton, Eng.	F. E. Birch, Dist. Traffic Agt., 134 High St.
Cardiff, Wales	S. C. Shipman, District Traffic Agent, 35 St. Mary St.
Glasgow, Scotland	J. M. Walker, Dist. Traffic Agt., 75 Union St. Rigby's Ltd., Pass. Agts., 74 High St.
Belfast, Ireland	Stephens & Walkington, Agts., Freight Dept., 8 Victoria St.
Antwerp, Belgium	Wm. Taylor, Special Agt., 2 Quai Ortelius, c/o Agence Maritime, DeKeyser, Thornton.
Paris, France	Canadian National Railways (France). A. L. Regamey, General Tourist Agent, 1 rue Scribe
Havre, France	Ch. Vairon & Co., Agents, 5 Rue Mayran.
Genoa, Italy	Ch. Vairon & Co., 101 Boul. de Strasbourg.
Hamburg, Germany	E. G. Laing, Special Agent, Piazza Portello 2. Adolf Blum & Popper, Agts., 17 Moncke- bergstrasse.

AUSTRALIA AND NEW ZEALAND REPRESENTATIVES

Sydney, Australia	G. F. Johnston, Gen. Agent, Pass. Dept., "Scottish House," 19 Bridge St., or P. O. Box 2606EE.
Melbourne, Australia	D. R. Crawford, Manager C.N.S.S., Queens- land Ins. Bldg., 84-88 William St.
Wellington, New Zealand	W. M. Luke, New Zealand Manager, C.N.S.S., Dom. Farmer's Inst. Bldg. or P. O. Box 1469.
Auckland, New Zealand	John Foley, Pass. Rep., Ferry Bldg.
Christchurch, N.Z.	M. P. Caffin, Manager, C.N.S.S., 187 Hereford St.

ORIENTAL REPRESENTATIVES

Hong Kong, China	A. Brostedt, Asiatic Traffic Mgr., Glou- cester Bldg., 16B Des Voeux Rd.
Shanghai, China	C. I. Barr, General Agent. G. M. Hemsworth, General Agent, 608 Robert Dollar Bldg., 3 Canton Rd.
Singapore, Sts. Settlements	L. L. Lawler, Gen. Agt., Hong Kong Bank Chambers.
Yokohama, Japan	D. E. Ross, Gen. Agt., No. 7 Yamashita-Cho.

CUBA AND HAWAII REPRESENTATIVES

Havana, Cuba	West Indies Shipping and Trading Co., Agents, 75 Obispo St. or P.O. Box 138
Honolulu, Hawaii	Fred L. Waldron, Ltd., Agents.

BRITISH WEST INDIES

Kingston, Jamaica	Lorne McCutcheon, Manager, P.O. Box 383
-------------------	---

JASPER

PARK Lodge

In the Canadian Rockies

CANADIAN
NATIONAL
RAILWAYS

JASPER

PARK Lodge

In the Canadian Rockies

CANADIAN
NATIONAL
RAILWAYS



Charles W. Simpson