

# JASPER

## PARK *Lodge*



CANADIAN NATIONAL RAILWAYS



# JASPER PARK Lodge

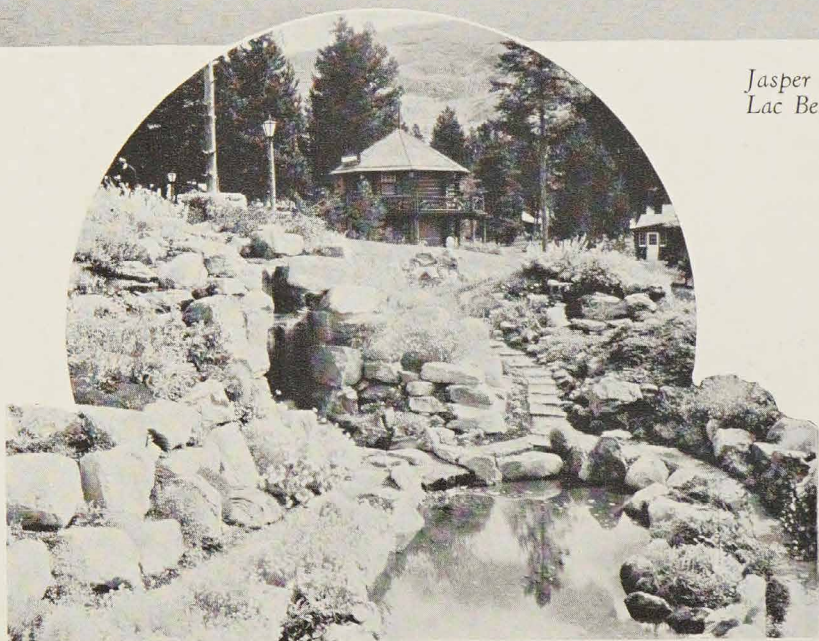
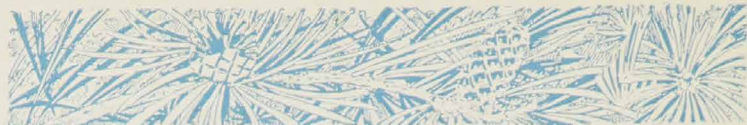
*Jasper National Park. Alta.*



*In the Heart of the Canadian Rockies*

## CANADIAN NATIONAL RAILWAYS

# JASPER PARK Lodge



Jasper Park Lodge, on  
Lac Beauvert

The rock garden



The  
swimming  
pool

# JASPER PARK Lodge



**T**O step off the Canadian National train on a summer morning in Jasper is to walk into a morning that is as new as the first morning of creation. The mountains are submerged in centuries; compared with them the most hoary cities—even that city of great romance, the “rose-red city half as old as Time,” wherever it stands—are growths of a night; but by enchantment the mountains are new eternally; each morning, as the filmy white mists loosen from the pines and float free to vanish into the clear sky, they stand forth afresh. With every rising sun the mountains are born again.

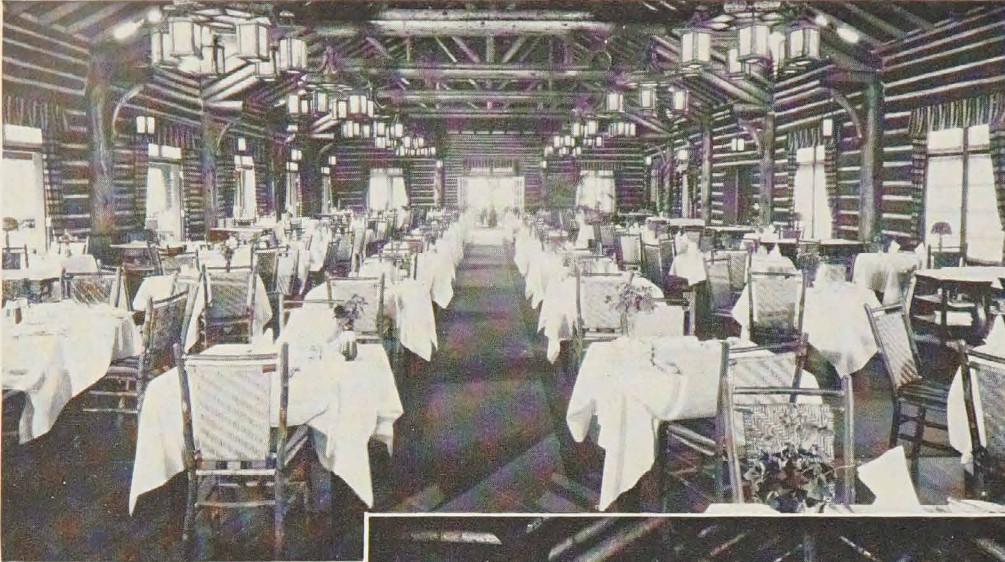
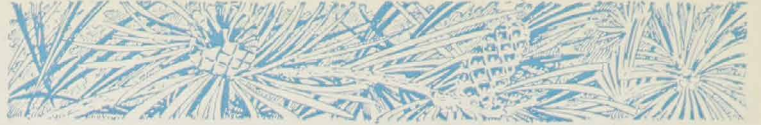
Into the fair new morning glides the train and the traveller enters the mountains almost like a swimmer diving into a clear cold pool. He is refreshed in an instant, he is excited, he is astounded.

The bus circles the tall totem pole by the station and passes through the charming town of logs and stone; it flies almost too quickly over the winding

*You may ride or climb to Old Fort Point and obtain this wide sweeping vista of the Athabaska Valley, Lac Beauvert, the Lodge and golf course*

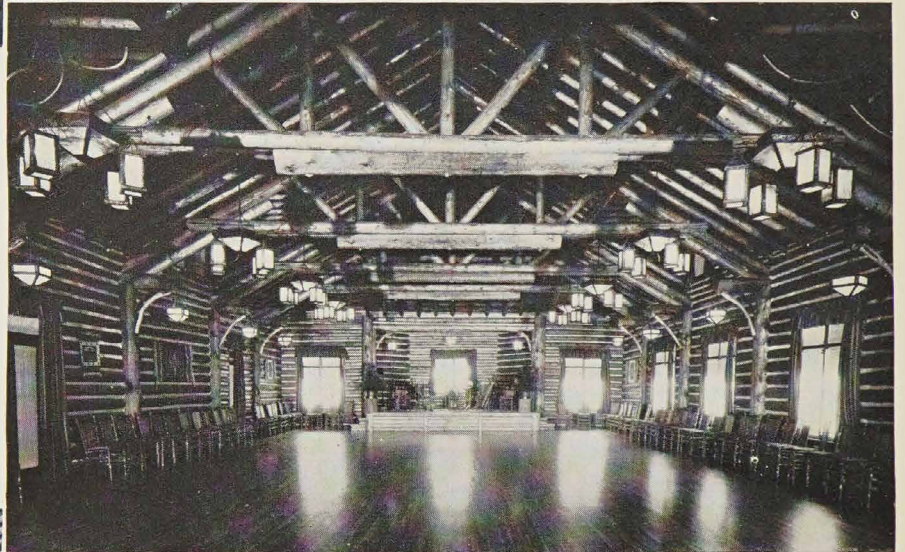


# JASPER PARK Lodge



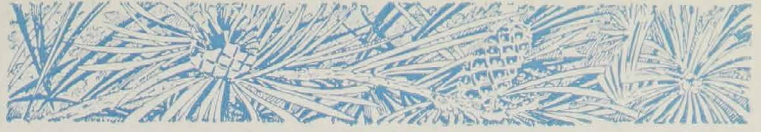
*The Main Dining  
Room*

*The Ball Room*



*The spacious and in-  
viting Main Lounge*

# JASPIER PARK Lodge

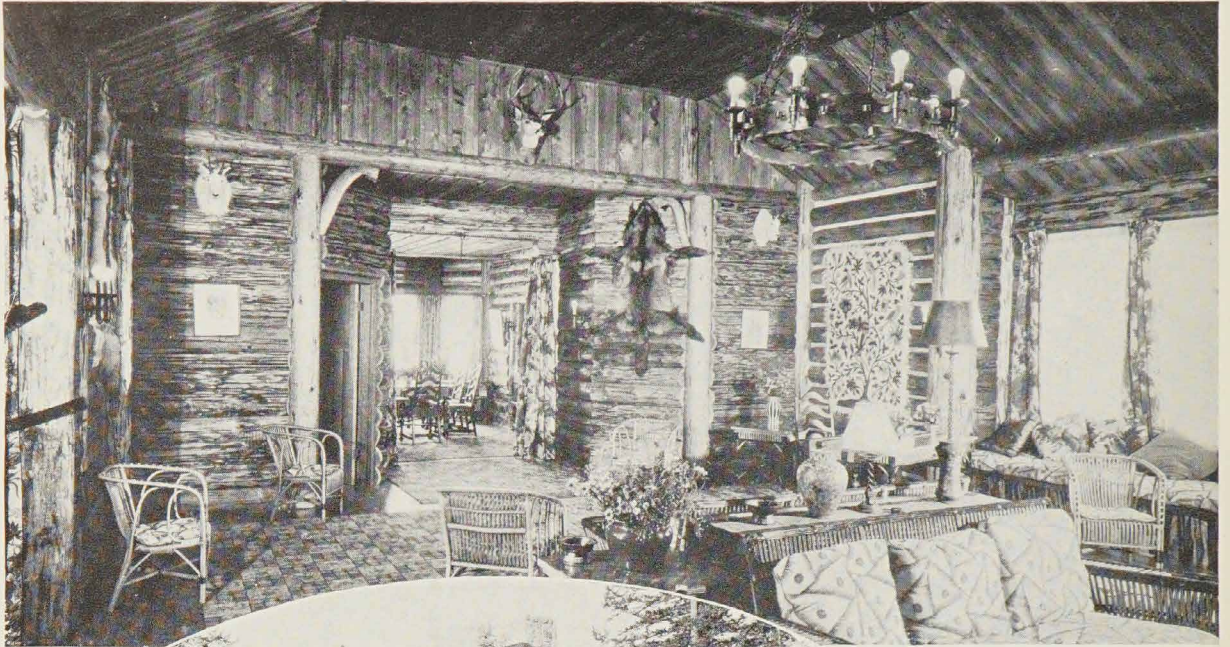


*In the Maligne potholes and gorge a mountain torrent bursts from its subterranean passage, adding to the interest of this awesome work of Nature*

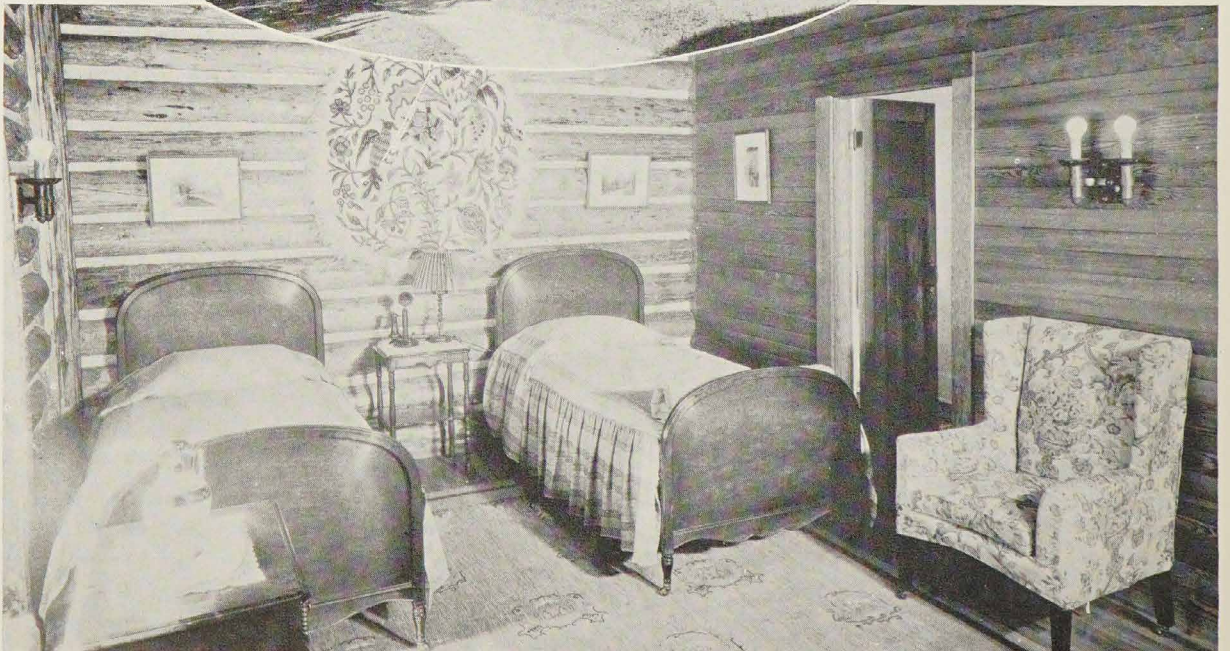
three miles to the Lodge. The rolling Whistlers, green almost to the top, fall behind; fall back but, like the glistening bulk of Pyramid, keep their true place in the scheme of things and are not lost; and as the bus runs on, new mountain peaks appear. Under the bridge, the Athabaska drives furiously to the Arctic. The highway plunges into the woods; pines aromatic, and aspens twinkling in the sun, thrust up from both sides. Perhaps a deer bounds out and crosses the road with an incredible spring; perhaps a bear ambles along and stares curiously over his shaggy shoulder. A turn in the road, a glimpse of green grass and a red flag waving, a glimpse of shining water, and there, sudden to sight, stands the Lodge.

The day when the Canadian Rockies need be compared with Switzerland is gone. They stand on their own merits, they have a character of their

# JASPIER PARK Lodge



Point Cabin—  
Lounge, exterior,  
and one of the bed-  
rooms





# JASPIER PARK Lodge



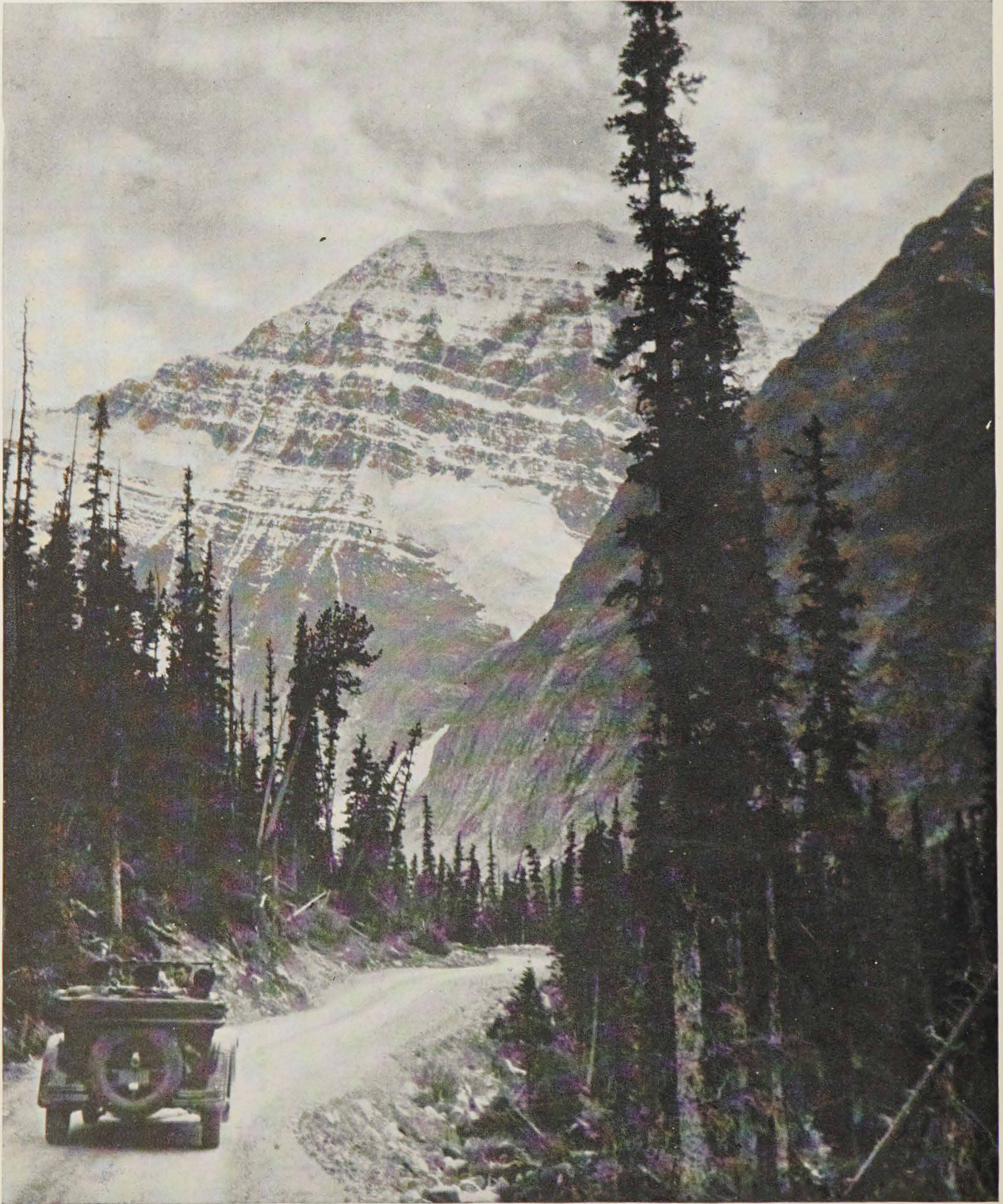
own. Nevertheless, many travellers still think of mountains in terms of the Alps, and one of the best compliments that ever came the way of Jasper Park Lodge was that paid it by an eminent Swiss mountain climber: "We have nothing like this in Switzerland!"

He was standing on the sloping lawn in front of the Lodge, on a glowing August afternoon. Before him, broken by the rock garden that threw summer back to the sun in a glorious outburst of poppies, marigolds, snapdragons, nemesia, bluebells and a thousand and one other flowers, the sward ran green to the water's edge; the swimming tank on the verge of the lake was lively with shouts and splashes and running figures, a diver soared into the air; the lake, disturbed only by the silver streak of a gliding canoe, lay in lucent color; at one end of the lake he could see a stretch of grass and a little red flag on Jasper's famous golf course; on the far side of the still sheet of water and reflected in it, the stout curves of the Whistlers; to his left, eighteen miles away but dominating the whole valley, the shapely peak of Mount Edith Cavell, radiant in snow and ice; to his right, the upthrusting angle of Pyramid, hard, colored, polished mineral. Behind him stretched the Lodge, a little summer village of cabins ranged along the lake and planted among the trees.

*Mounts Hardisty and Kerkeslin and the winding Athabaska River form this impressive panoramic view from the Cavell Drive*



# JASPER PARK Lodge



*The Cavell Drive is climaxed by an unforgettable view of Mount Edith Cavell and Angel Glacier. Mount Sorrow, rust-red and drab, obtrudes to throw into sharp relief the glistening white of the massive, ice-draped form beyond*

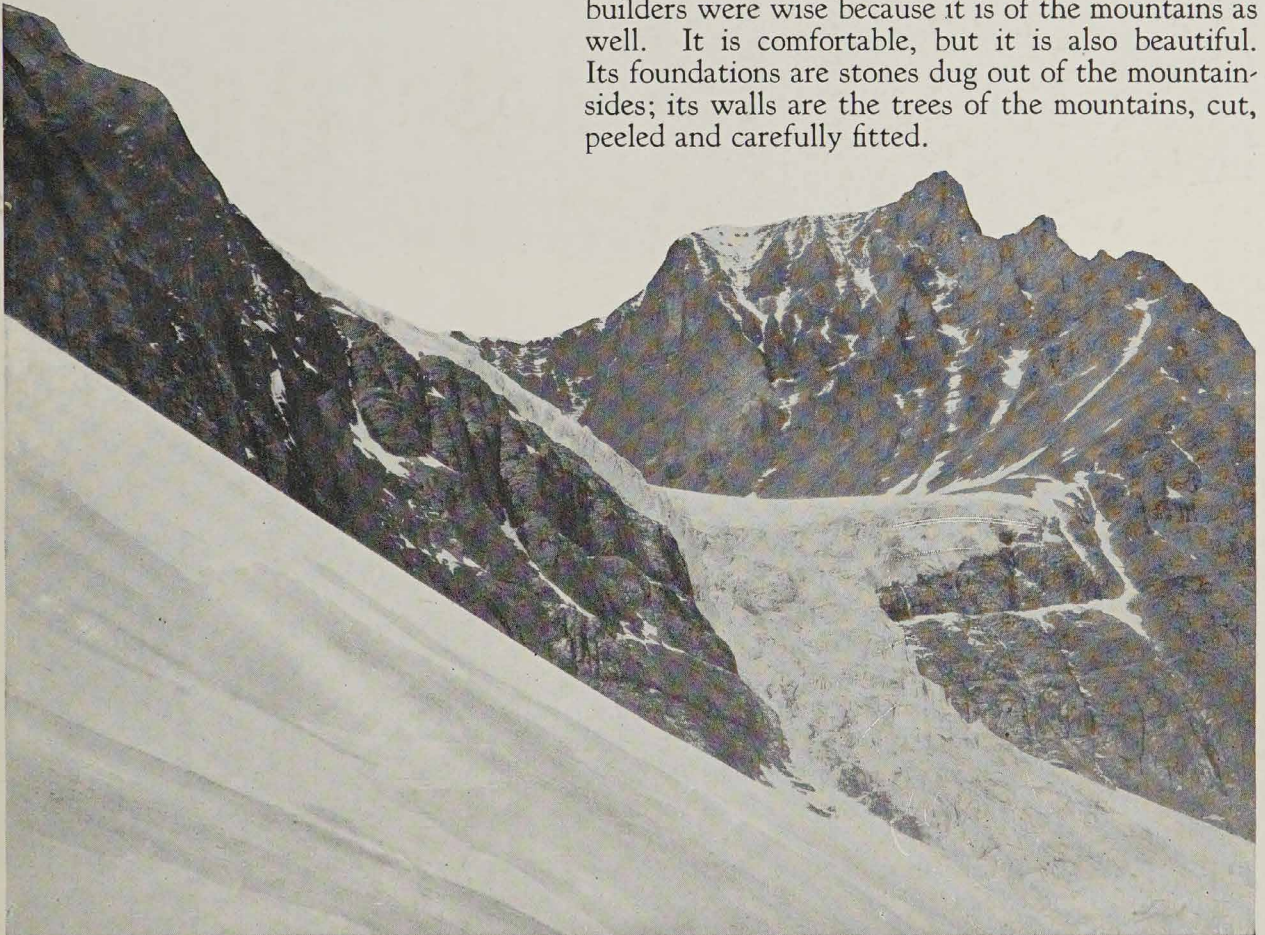
# JASPER PARK Lodge



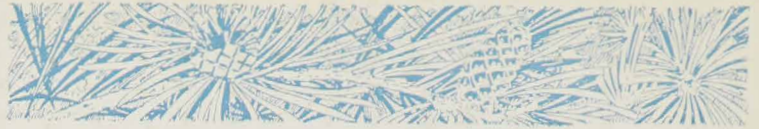
*As an angel with outspread wings the glacier appears to visitors, who are carried to its very edge by motor car and so enabled to traverse its lower slopes and peer into its yawning crevasses*

“How wise the builders were!” he exclaimed. “In Switzerland our hotels are pretentious, big buildings much more in keeping with a city atmosphere than with the mountains. Here, the Lodge does not intrude; with its logs and its shingled roofs it blends with the trees; it rises naturally from the lake; it does not clash with the hills.”

The builders were wise. Jasper Park Lodge is large—it has rooms enough for more than six hundred guests; in the main building is a dining-room where four hundred may dine at once; it is a self-supporting institution with a staff of several hundreds; it gives its guests electric lights and telephones and hot water and laundry service and the fruits of a bountiful and well-run kitchen; it maintains an orchestra for dancing every night, as well as for concerts; it operates a fleet of automobiles, busses and trucks; in every respect it is a luxurious and modern hotel. And yet it is vastly different. It is in the mountains, and the builders were wise because it is of the mountains as well. It is comfortable, but it is also beautiful. Its foundations are stones dug out of the mountain-sides; its walls are the trees of the mountains, cut, peeled and carefully fitted.



# JASPER PARK Lodge



In two of the wings of the main building bed rooms may be had, but most of the travellers who go to Jasper prefer to live in the cabins. They are of all sizes, some ten bed rooms, some sixteen, some only large enough for a family. It is a favorite custom for a family or a group of friends to rent a cabin for two weeks, a month, or even the whole season. Two of the cabins are entirely self-contained, including dining room and servants' quarters. The other cabins have sitting rooms, verandahs, and are steam-heated. All bedrooms have hot and cold running water, and the majority have private bath.

Summer in Jasper means beauty to be enjoyed and air to be drunk in like wine. The beauty and exhilaration of Jasper may be approached in many ways. It might well be enough to reach them by idling, by sauntering around the lake or strolling in the woods, by sun-bathing at the open swimming pool, by drifting over the lake in a canoe that floats like a leaf on the emerald water.

*The golf club house*



# JASPIER PARK Lodge



*This bird's-eye view of a portion of the Jasper Park Lodge golf course was obtained from a shoulder of Mount Tekarra*

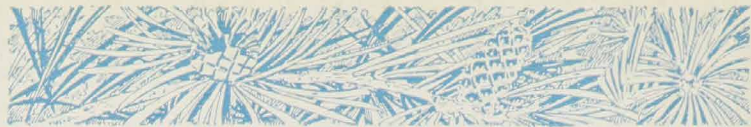
But it would be a shame not to motor up the zig-zagging road that climbs two thousand feet to the very brink of the ice that clings to the side of Mount Edith Cavell, the glacier that looks so much like an angel with wings outspread, a drive that reveals the Athabaska Valley in stretch after stretch of shifting beauty.

It would be a mistake not to see the majesty of Mount Edith Cavell close at hand, and it would be a mistake not to drive the six miles toward the Old Man, that most familiar figure in the range behind the Lodge, to see the Maligne River rive the rocks apart and cleave the amazing gorge. "Any other canyon is like a crack in a teacup," said a traveller once as he leaned over and peered into the perilous depths.

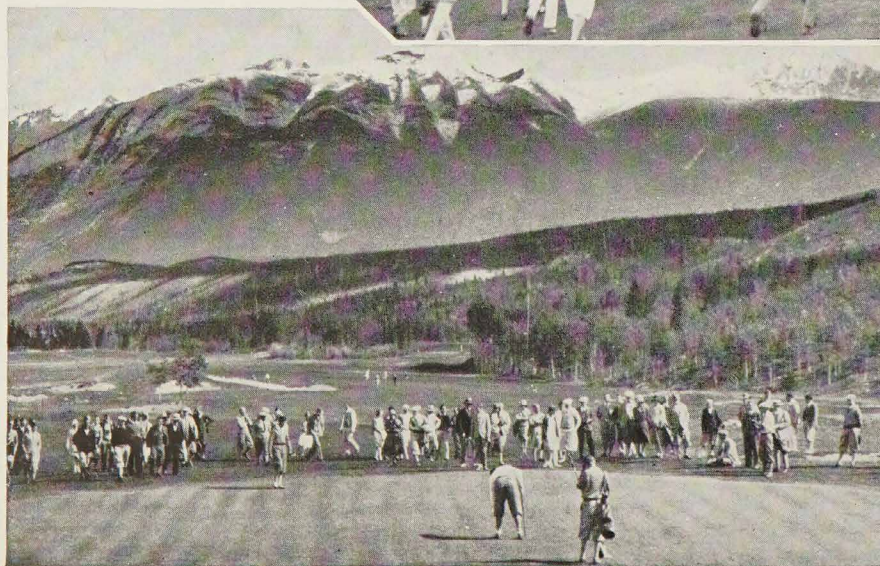
The drive to Pocahontas is another revelation of Jasper National Park. Hunters with the camera—no others are allowed, for the park is a game preserve—are particularly fond of it, for, while a guest might



# JASPIER PARK Lodge



*Gallery and players in the  
1929 Amateur Championship  
and the Totem Pole  
Tournament*



*The Totem Pole Trophy*

# JASPER PARK Lodge



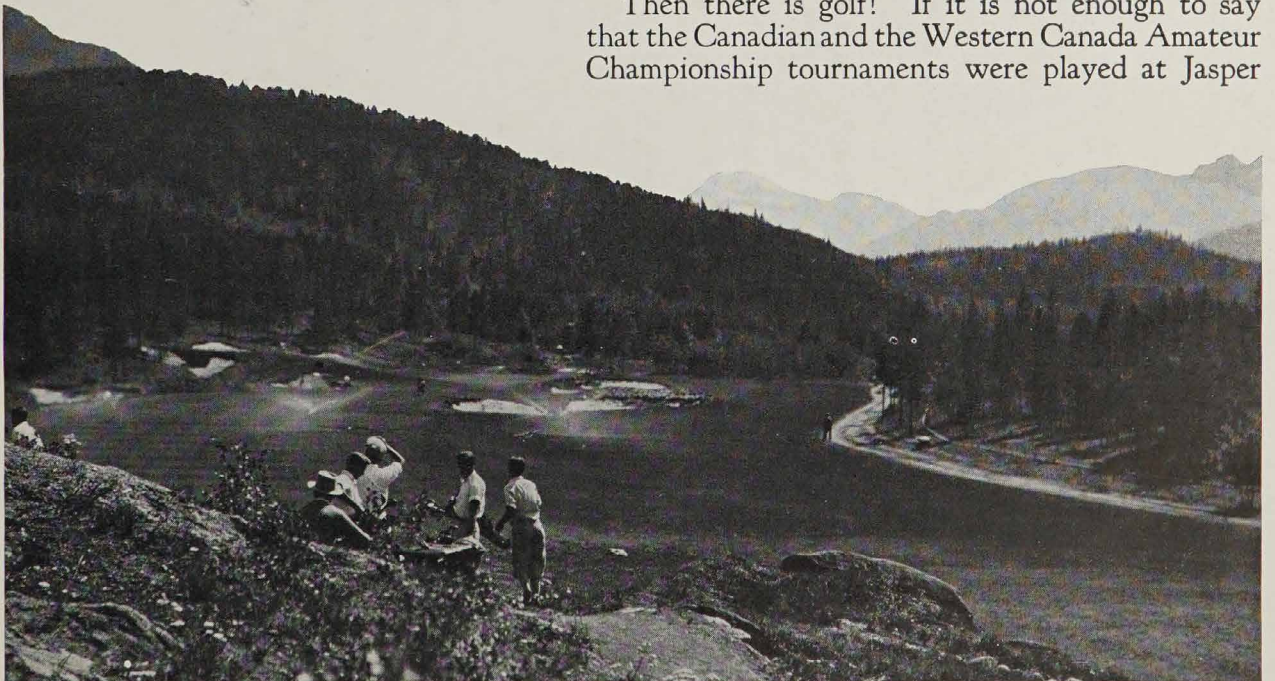
come out any morning to find a deer at his front door or might see a family of bears crossing a fairway of the golf course as he tees up, the best place to see game is along the Pocahontas highway. Cinnamon bears, black bears, beaver, deer, moose, mountain sheep and many other animals, wild and yet unafraid, may be seen almost any day, especially early in the season. To the Swiss climber who was mentioned a few pages back, the animals were a continual delight. "We have none in Switzerland at all, you know," he said.

Idling and motoring are two ways of knowing Jasper. They have their rewards, but to appreciate the mountains to the full, the better way is to get astride a pony or go a-hiking. There are hundreds of miles of trails, short ones and long ones.

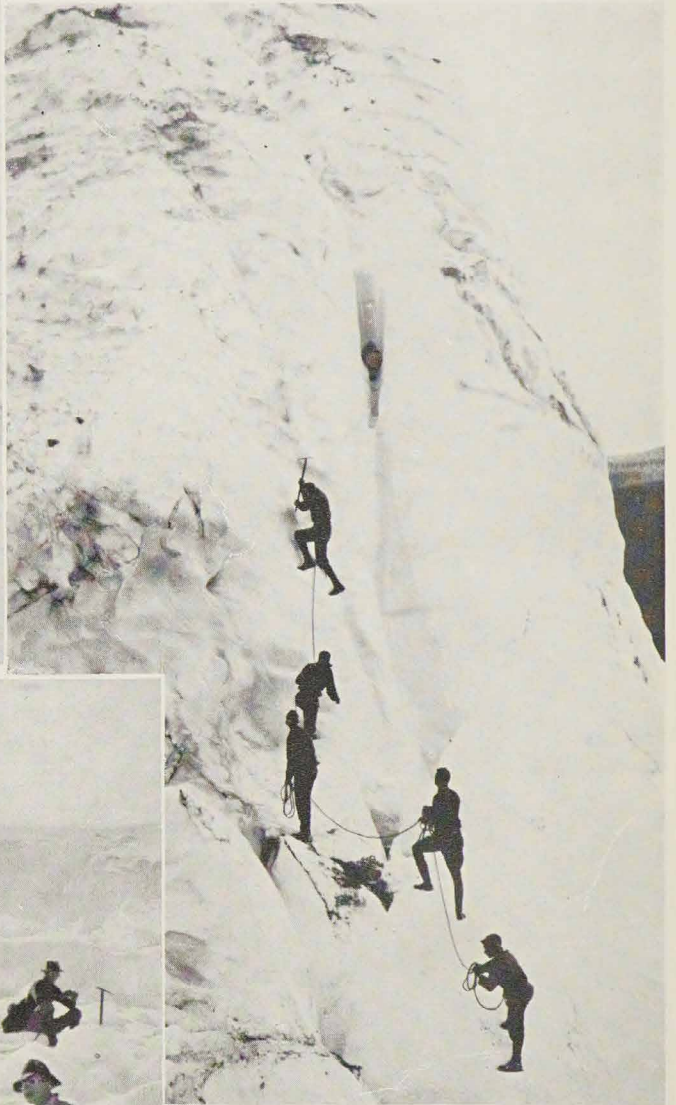
Soon the motors will be able to reach the chalet at Maligne Lake, but at present, part of the journey must be done on foot or on horseback, and Maligne Lake is the crowning glory of Jasper Park. It is seventeen miles long and from the very water the mountains rise, magnificent, colossal, snowbound and icebound throughout the summer as in winter. To ride or hike around the Circle, from the Lodge to Maligne and back through the awesome Shovel Pass, camping out for three nights, each at a different but equally comfortable chalet, is to get the true thrill of the Rockies.

Then there is golf! If it is not enough to say that the Canadian and the Western Canada Amateur Championship tournaments were played at Jasper

*The 4th—a one-shotter. Mount Edith Cavell is seen in the distance*



# JASPER PARK Lodge



*Alpinists find at Jasper un-scaled peaks to tax their skill and courage. Experienced Swiss guides are available*



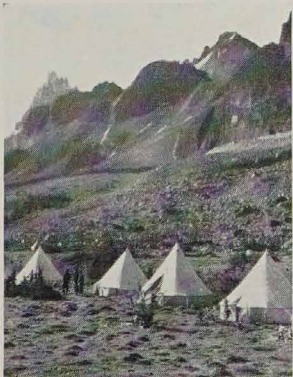
# JASPER PARK Lodge



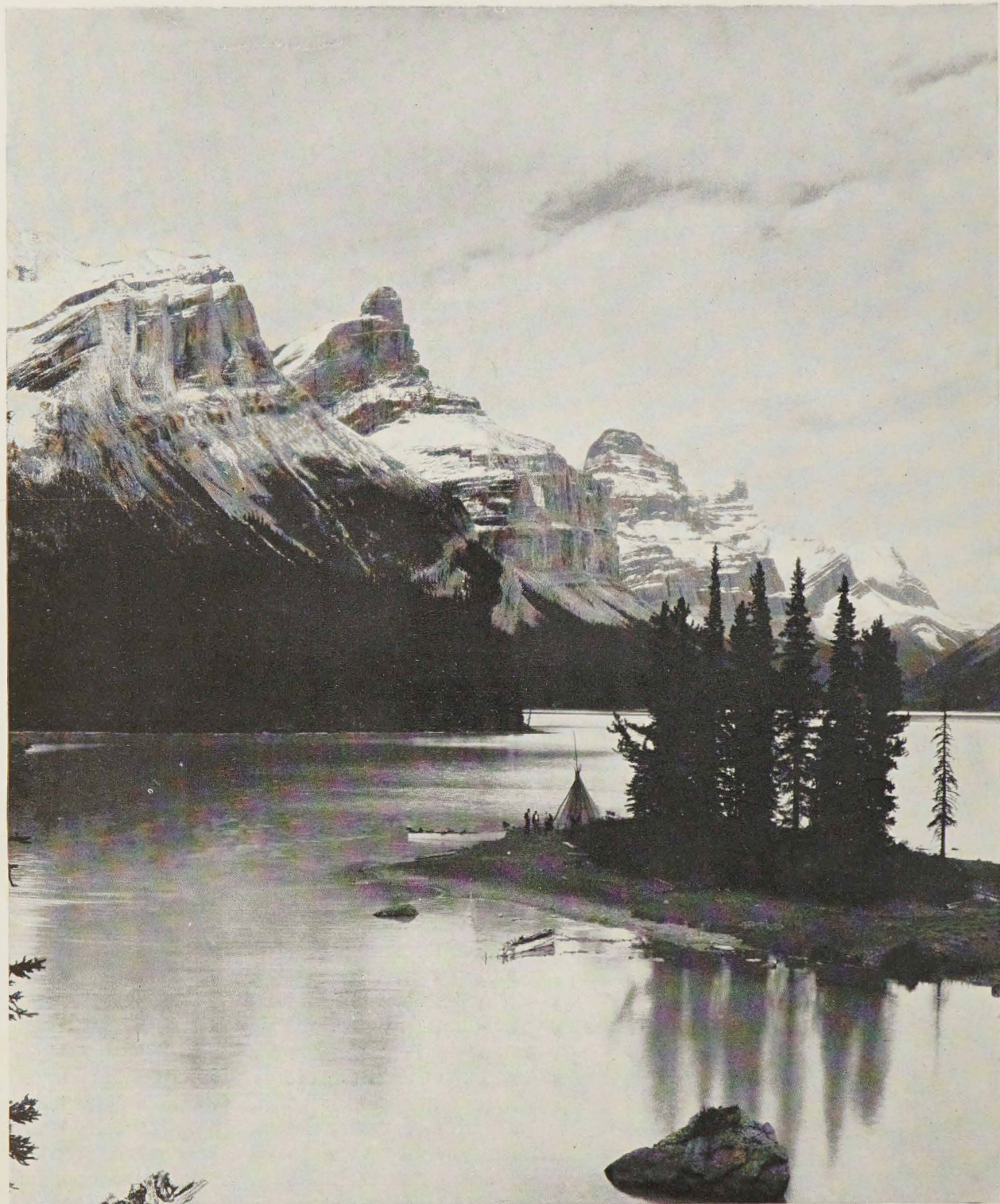
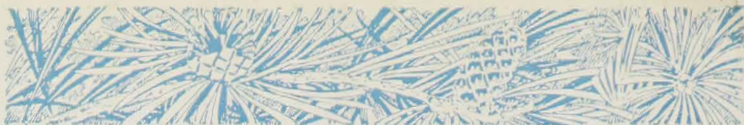
*Hundreds of miles of trails intersect Jasper's 5,300 mile area. They open to the trail rider and camper a wonder world of untold scenic grandeur. For an exhilarating vacation, ride trail in Jasper*

during 1929, the praises of golfers from all parts of the world may be heaped up. The Jasper Park Lodge links not only give new aspects of mountain beauty at every turn but they stand by their reputation as the finest on the continent and among the finest in the world. Trickily laid out, sporty, they yet make provision for players of less than championship calibre. After playing at Jasper, where par is so hard to beat, where the air urges the player to at least 36 holes a day, where sunlight and shadow, clouds and rainbows change the landscape every hour, and a bear might chase the ball, one is more critical of ordinary courses.

Jasper lives up to the joy of the first glimpse, whether the traveller spends all his time at golf, whether he rests and muses, whether he fares into the Tonquin Valley to climb the frowning Ramparts, whether he mounts a canny-footed pony or strides over the trails on his own legs. He may go to Jasper in spring, when the woods are sprinkled and perfumed with wild flowers and the birds are hosting about the gleaming lakes, when even on Signal Mountain and the Whistlers the snow lies low; he may go in the flare and luxury of summer; or he may wait until fall, when the valleys are brimming with yellow and maroon and the mountain



# JASPER PARK Lodge



*Maligne Lake, crowning glory of Jasper National Park, is the largest glacial-fed body of water in the Canadian Rockies*

# JASPER PARK Lodge



The Maligne Lake region embraces many mountains exceeding 10,000 feet in altitude affording abundant opportunity for snow and ice climbing, and possesses much to interest the botanist and naturalist

slopes are burned purple; but, whenever he goes, the mountains will rise up anew for him every morning and it will be a wrench to tear himself away from them.

### Suggestions for One-Day Guests at Jasper Park Lodge

NOTE—Get full particulars on any of these suggestions at Lodge Transportation Desk or from any Canadian National Passenger Agent. For motor drives and saddle trips see following pages.

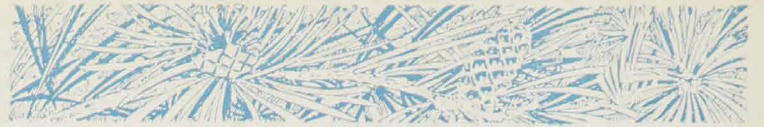
MORNING—Motor Drive No. 3, (Pyramid and Patricia Lakes), or Short Saddle Trip No. 5, (Maligne Canyon), or Hiking Trip to "Old Fort Point," or Tennis, Golf, Boating, Bathing.

AFTERNOON—Motor Drive No. 2, (Mount Edith Cavell), or Motor Drive No. 4, (Pocohontas Drive), or Short Saddle Trip No. 7, (Miette Ride), or Tennis, Hiking, Golf, Boating, Bathing.

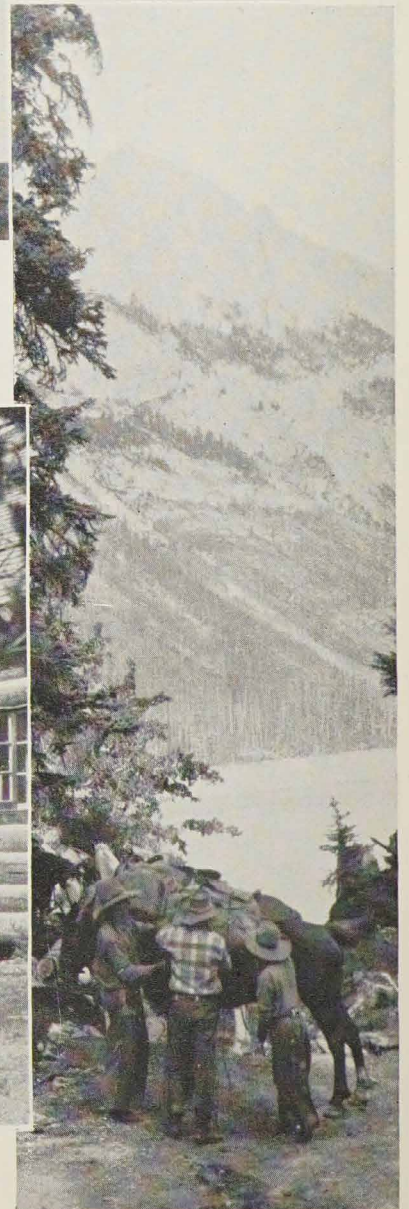
ALL DAY—\*Saddle Trip No. 11, (Buffalo Prairie), or



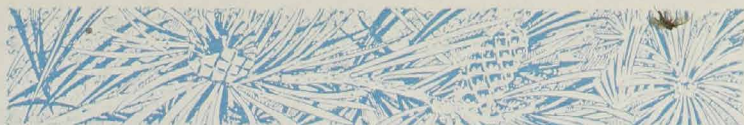
# JASPER PARK Lodge



*Maligne Chalet, headquarters for climbing and exploration parties in this region, commands an exceptional view of the Lake*



# JASPER PARK Lodge



\*Saddle Trip No. 8, (Signal Mountain), or No. 9, (Whistlers Mountain), or No. 10, (Caledonia Lake).

EVENING—Canoeing, Dancing, Motion Pictures.

\*Guides necessary for these trips. Arrangements made for trips and guides at Lodge Transportation Desk.

## *Suggestions for Two-Day Guests*

FIRST DAY—Morning—Motor Drive No. 3, (Pyramid and Patricia Lakes), or Short Saddle Trip No. 5, (Maligne Canyon), or Hiking Trip to "Old Fort Point," or Golf, Tennis, Boating, Bathing.

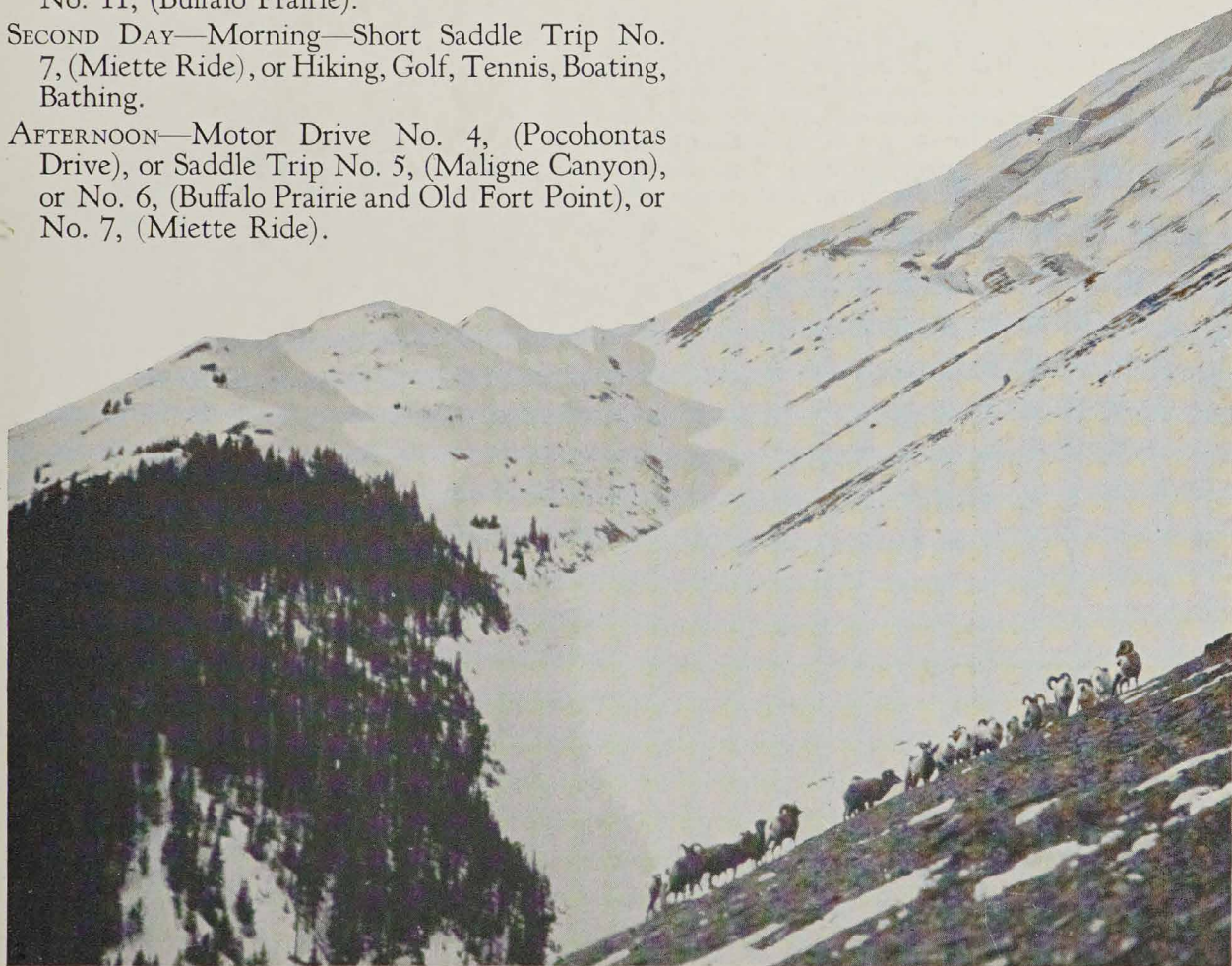
AFTERNOON—Motor Drive No. 2, (Mount Edith Cavell), or No. 4, (Pocohontas Drive), or Short Saddle Trip No. 6, (Buffalo Prairie, Old Fort Point), or No. 7, (Miette Ride).

ALL DAY—Saddle Trip No. 8, (Signal Mountain), or No. 9, (Whistlers Mountain), or Saddle Trip No. 11, (Buffalo Prairie).

SECOND DAY—Morning—Short Saddle Trip No. 7, (Miette Ride), or Hiking, Golf, Tennis, Boating, Bathing.

AFTERNOON—Motor Drive No. 4, (Pocohontas Drive), or Saddle Trip No. 5, (Maligne Canyon), or No. 6, (Buffalo Prairie and Old Fort Point), or No. 7, (Miette Ride).

Jasper National Park is a game sanctuary, and large numbers of mountain sheep and goat, moose and caribou may be seen on trail trips, and also along the Pocahontas Drive, which is known as the "Game Trail"



# JASPIER PARK Lodge



TWO DAYS—Saddle and Camping Trip No. 13, (Athabaska Falls), or Saddle and Camping Trip No. 14, (Jacques Lake), or Motor and Saddle Trip No. 15, (Medicine Lake, Maligne Lake, Shovel Pass).

### *Suggestions for Three-Day Guests*

FIRST DAY—See Suggestions for Two-Day Guests.

SECOND DAY—See Suggestions for Two-Day Guests.

THIRD DAY—Saddle, Camping and fishing Trip No. 16, (Tonquin Valley and Amethyst Lake), or Saddle and Camping Trip No. 14, (Jacques Lake), or No. 12, (Medicine Lake).

### *Suggestions for Four-Day Guests*

Any of the previous Suggestions, to One, Two or Three day visitors, or Saddle and Camping Trip No. 15, (Medicine Lake, Maligne Lake and Shovel Pass), or Trip No. 16, (Tonquin Valley, Amethyst Lake via Portal Creek).

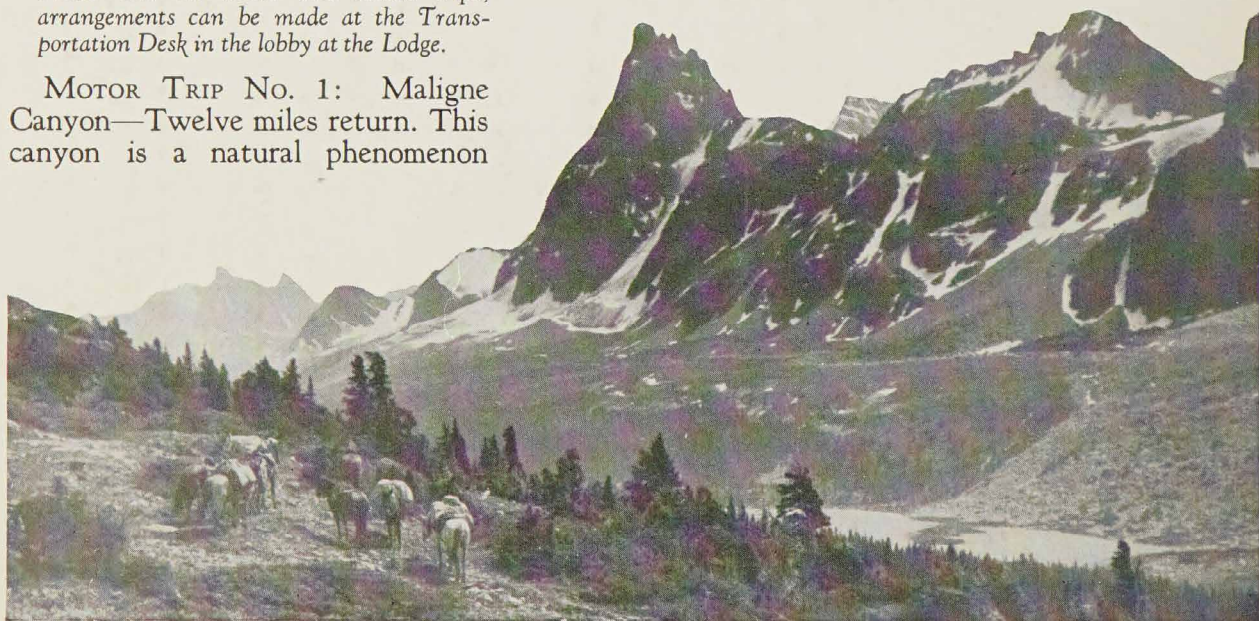
*Saddle and camping trips anywhere in this vast Park and for any duration of time or distance may be arranged at the Lodge Transportation Desk, also information may be secured regarding big game hunting outside the Park. Generally speaking the longer saddle trips can be planned with greater advantage through the official outfitters (Fred Brewster Limited, Jasper, Alberta), as individual comforts and tastes can be better consulted.*

### *Motor and Saddle Sightseeing Trips from Jasper Park Lodge—Daily Motor Trips*

*NOTE—For all motor and saddle trips, arrangements can be made at the Transportation Desk in the lobby at the Lodge.*

**MOTOR TRIP NO. 1: Maligne Canyon**—Twelve miles return. This canyon is a natural phenomenon

*Tonquin Valley from Vista Pass,—the pack train resting on their return from Moat Lake. Mount Redoubt of the Ramparts Range (in centre) has never been scaled*



# JASPIER PARK Lodge



which ranks among the most extraordinary and interesting within Jasper National Park. The route lies over a gradually ascending and winding roadway from which the tourist obtains magnificent views of lordly mountains and charming vistas of the Athabaska Valley. Cost per person, \$2.50. At the Canyon, light lunch and refreshments may be had in the Tea House.

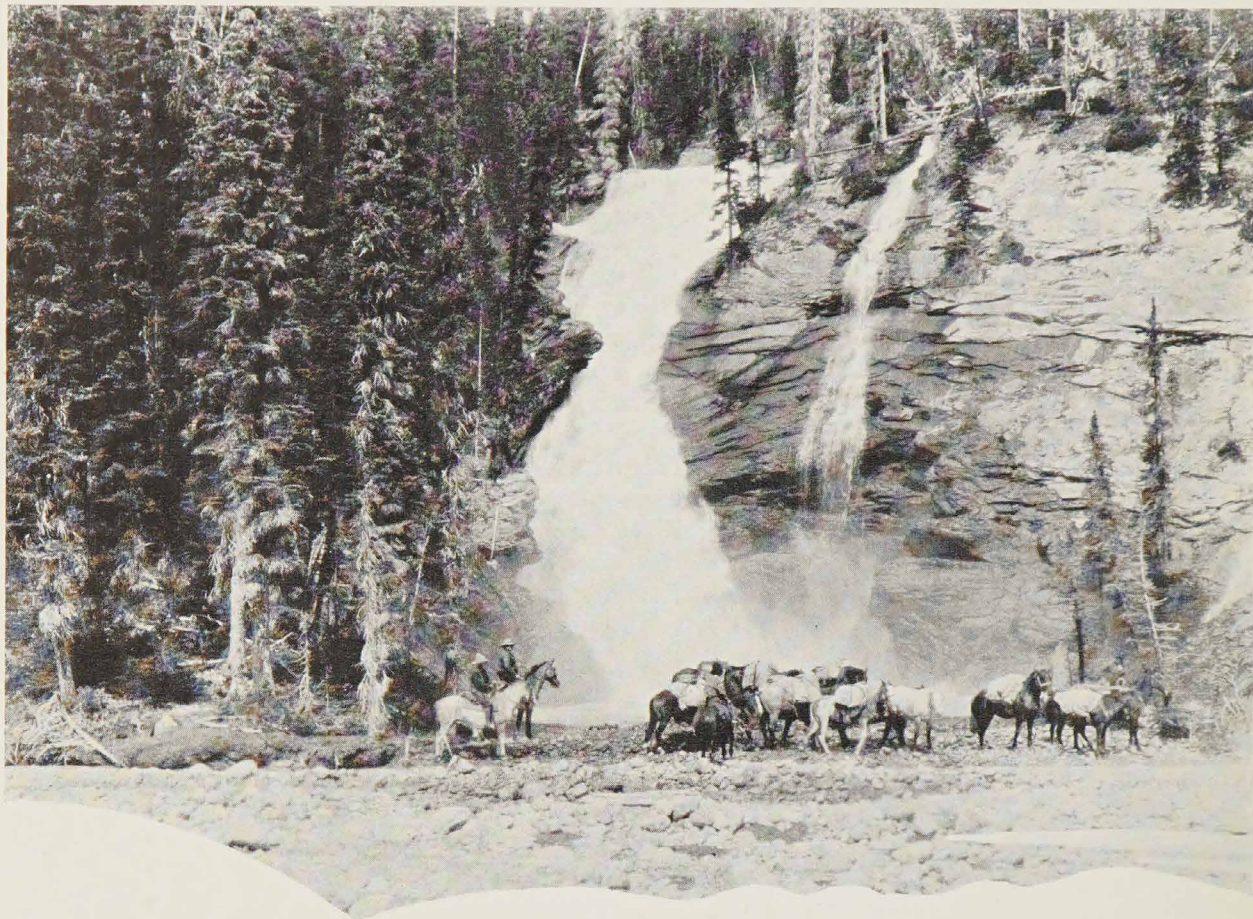
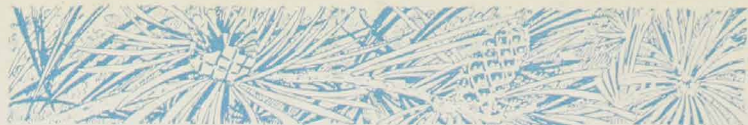
MOTOR TRIP No. 2: Glacier of the Angel (Mount Edith Cavell) Drive—Thirty-six miles return. This drive affords good motoring and, by a course of wide-sweeping switchbacks, its altitude increases by nearly 2,000 feet, giving the tourist an ever-changing series of most striking and beautiful panoramas unequalled on the continent. Cost per person, \$5.00; minimum, three persons. Light lunch and refreshments may be had at the Tea Room at the foot of the Glacier.

MOTOR TRIP No. 3: Pyramid and Patricia Lakes—Fourteen miles re-

*Bennington Glacier, flowing from Mount Bennington (10,800 feet) and reached via Geikie Trail, is literally a river of ice dividing the Ramparts and Mounts Postern and Casemate*



# JASPER PARK Lodge



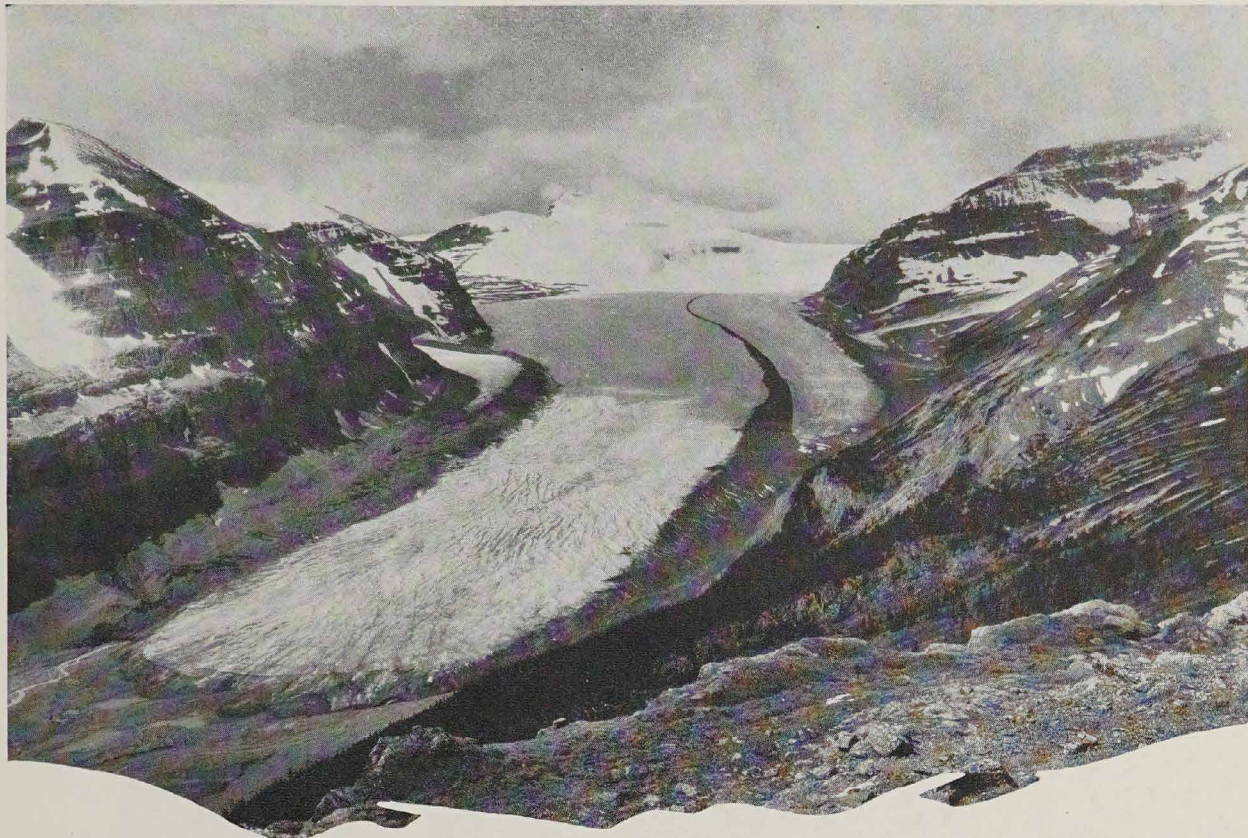
turn. These are two of the most beautiful lakes near Jasper and lie close to the foot of Pyramid Mountain. The route lies over the Athabaska River, through the town of Jasper. Pyramid Lake is crescent-shaped; its area about three hundred acres. Lake Patricia, less than half the size of Pyramid, is long and narrow. Cost per person, \$2.50.

MOTOR TRIP No. 4: Pocohontas Drive. It follows the completed section of the new Inter-provincial Highway. Near the turn at the end of the drive may be viewed Punch Bowl Falls and Valley. The Pocohontas Drive affords a very wide variety of mountain scenery. No rise occurs in the elevation, so that always the mountains tower majestically overhead, and by their nearness take on a seeming intimacy. This drive offers excellent opportunity for the nature lover and student to record new specimens of animal and

*The Lower Castleguard Falls, one of the many beautiful waterfalls in the Castleguard Valley*







The Saskatchewan Glacier, in the Columbia Icefields, largest of the ice tongues in this region, which forms the geographical centre of the water system of one-quarter of the continent

plant life. Cost per person, \$5.00; minimum, three persons.

NOTE—All four motor trips may be taken for the special rate of \$12.50.

### Short Saddle Trips

No. 5: Maligne Canyon. This is a daily trip leaving the Lodge at 9.00 a.m. over the back trails away from the motor roads, through walls of spruce and pine and open spaces affording wonderful views. The route is over the famous "Athabaska Trail" and traverses the entire length of Maligne Canyon. A beautiful and easy ride of 12 miles return, time 3 hrs. Price \$3.50 each person with extra charge for guide if less than five persons.

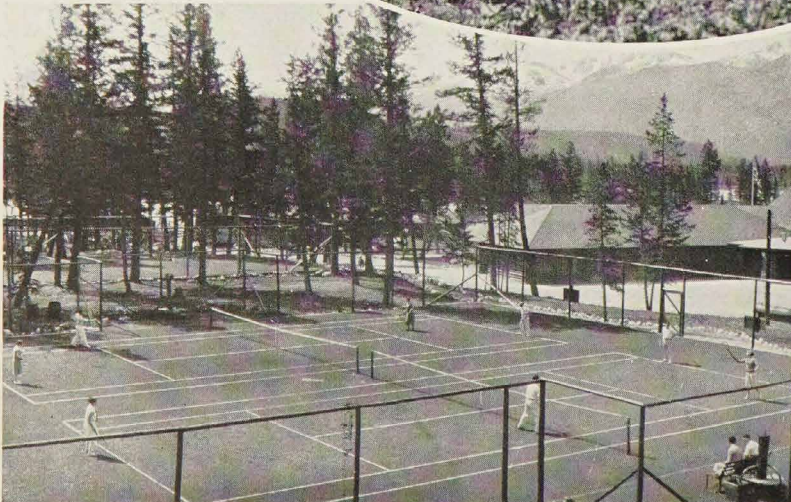
No. 6: Golf Course, Buffalo Prairie and Old Fort Point (Hudson's Bay Table Top). This is a Scheduled trip, leaving the Lodge daily at 2.00 o'clock, skirting the greater part of the golf course, proceeding up the Buffalo Prairie trail through Hell's Gate to the top of the ridge and out on to Old Fort Point, affording a splendid view of the valley, the



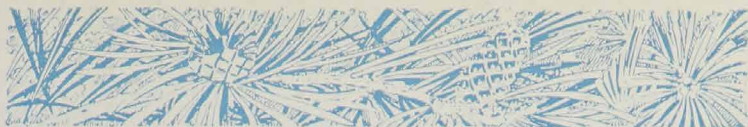
# JASPIER PARK Lodge



*Camping, hiking  
and riding trips  
reveal the scenic  
wonders of this  
mountain kingdom*



*Tennis on perfect courts  
is followed by a dip in  
the pool*



Lodge, Mount Edith Cavell and the mountains on either side of the upper river.

This vantage point commands a superb panoramic view of the greatest scenic golf course in America. Distance, seven miles. Time, two and one-half hours. Price, \$3.50 per person. Extra charge for guide when party consists of less than five riders.

No. 7: The Miette Ride. One of the most delightful short and easy rides, bringing tourists through the town of Jasper on the return trip. Ten miles return. Time, about four hours. Price \$3.50 per person. Extra charge for guide when party of less than five riders.

### *One-Day Saddle Trips*

*NOTE—The management recommends that no mountain saddle trip be made without the services of a guide. Cost of a guide is \$7.00 per day, \$4.00 half day. Reserved guide and horse \$10.00 per day. Guides' charges are materially reduced per person according to the size of the party. Personal effects limited to 20 pounds per person for camping trips and complete equipment does not include personal accessories such as towels, soap, etc. One dollar per week, per pair, will be charged for blankets*

SADDLE TRIP No. 8: Signal Mountain. Sixteen miles return. One of the most delightful rides is to the top of Signal Mountain (altitude 8,200 feet). The view from this altitude is stupendous, embracing the Athabaska Valley and the Yellowhead Pass. Cost, \$6.00 for saddle horse.

SADDLE TRIP No. 9: Whistlers Mountain. Eighteen miles return. This is another wonderful trip. A good trail. This mountain is situated just above the junction of the Miette River with the Athabaska River. Cost, \$6.00 for saddle horse.

SADDLE TRIP No. 10: Caledonia Lake. Fourteen miles return. A small lake lying on a rocky bench above the Miette River, west of Jasper, reached by passing through the town and following the Miette road to the Cabin Creek bridge. Here the trail to Caledonia Lake branches off to the right and goes up the left bank of Cabin Creek. This is one of the most pleasant rides in the Park. Cost \$5.00 for saddle horse.

SADDLE TRIP No. 11: Buffalo Prairie—

Wabasso Lake. Twenty miles return. This is a good trail and the scenery is wonderful. Here also there is excellent fishing. Cost of saddle horse, \$6.00. Guide extra.

### *Two-Day Saddle and Camping Trips*

*NOTE—No half days in saddle and camping trips. Reservations for scheduled camping trips must be made at least 24 hours in advance, also 24 hours' notice of cancellation must be given.*

SADDLE TRIP No. 12: Medicine Lake and Medicine Lake Chalet. Thirty-four miles return. The trail leading to this interesting lake is a continuation of the Maligne Canyon driveway. Medicine Lake, with a length of four and a half miles and a width of nearly a mile, is delightfully situated in Maligne Valley, amid towering mountains whose peaks are mirrored in its placid surface. Cost, \$12.00 each for minimum party of three. Accommodation at Medicine Lake Chalet extra.

SADDLE TRIP No. 13: Athabaska Falls. Forty-one miles return. Situated at the foot of Mount Kerkeslin, Athabaska Falls present a wondrously glorious sight as they come tumbling into the canyon. In the vicinity mountain goat are plentiful and black, cinnamon and grizzly bear may be found. There is also excellent fishing in Hardisty Creek at the foot of Mount Hardisty in this vicinity. Cost, including everything, one person, \$25.00 per day, two persons, \$45.00 a day; each additional person \$15.00 a day.

### *Three-Day Saddle and Camping Trips*

SADDLE TRIP No. 14: Jacques Lake. "A Real Fishing Trip." Jacques Lake is a small body of water delightfully situated between the Maligne and Rocky Rivers, and is about twenty-seven miles from Jasper Park Lodge. It is noted for its excellent trout fishing—probably the best in the Park. Cost \$25.00 per day, one person, \$45.00 two persons, \$15.00 a day each additional person.

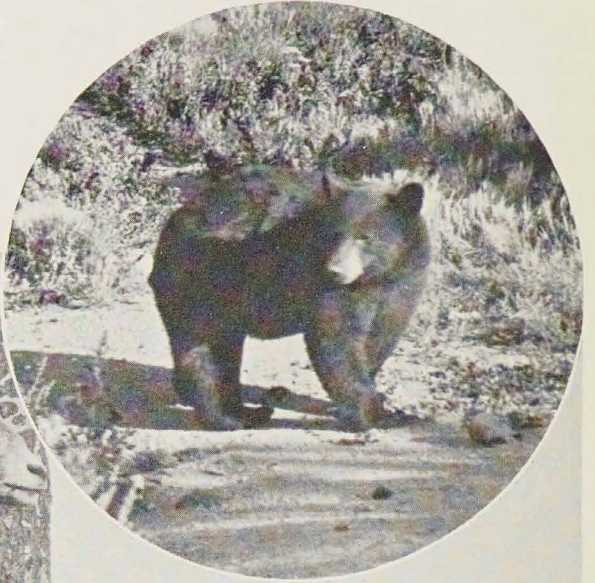
### *Four-Day Saddle and Camping Trips*

*Of the almost bewildering array of wonderful places in Jasper National Park, Maligne Lake affords much that is interesting and striking to tourists who profess appreciation for such things.*

# JASPER PARK Lodge



*Bruin is a frequent visitor at the Lodge, and is often seen on the golf course*



*Many visitors at Jasper are rewarded by excellent views of mountain sheep and goat and other wild life*

*The mule deer, though timid, is also inquisitive*



**SADDLE TRIP NO. 15:** Maligne Chalet, commanding a full view of Maligne Lake, is situated on a low plateau at the outlet. Before the Chalet and extending in a south-easterly direction for seventeen miles, with a breadth varying from two hundred yards to two miles and possessing some fifty miles of shore line, lies the largest glacial fed lake in the Canadian Rockies.

Beginning with Mount Samson, the jagged peak ten thousand feet high facing the Chalet on the left, the altitude of the peaks forming the Maligne group, which includes Mounts Charlton, Unwin, Warren, Mary Vaux and Maligne, increases until, in Mount Brazeau, a height of twelve thousand two hundred and fifty feet is reached—one thousand feet higher than Mount Edith Cavell and approaching the height of Mount Robson itself.

The mountains rise precipitously from the lake and are heavily laden with snow and ice. At the south-west end of the lake, farthest from the Chalet, lies a considerable snowfield and leading in a southerly direction towards the Brazeau River district is a high, though broad snow-pass, along the western base of Mount Brazeau and affording an easy way of access to this very interesting neighborhood. The nature of mountains in the Maligne Lake district affords abundant opportunity for both ice and rock climbing and is within easy reach of the Chalet by motorboat, horseback or on foot, and many comparatively easy climbs may be carried out by the amateur.

The mountains, and flowered alplands, within easy reach from the Chalet, will prove of interest to botanist and naturalist alike. Sheep, goat, cariboo, moose and deer frequent these pastures. The Opal Hills facing the Chalet on the east, provide sheep and goat for the observation of the visitor, while the mountain sides overlooking the lake and particularly those about the south-east are used extensively by the mountain goat as a summer pasture.

### *Route*

The first five miles of the trail lie eastward from Jasper Park Lodge down the Athabaska Valley to the Maligne River, then turning up

the Maligne River, along the base of the Colin Range nine miles to Medicine Lake and three and one-half miles along the shore of Medicine Lake to Medicine Lake Chalet. From Medicine Lake Chalet stretches ten miles of good trail and easy grades along the east bank of the Maligne River to Maligne Chalet.

Visitors returning by the Shovel Pass route over the Maligne Range, on leaving the Maligne Chalet, proceed up the slope of the mountains to the west of the Chalet and, crossing the Alpine meadows, go through Little Shovel Pass and Big Shovel Pass to spend the night at Shovel Pass Camp, completing the trip the succeeding day by following the trail down from the Maligne Range, by Signal Mountain, into the Athabaska Valley and return to the Lodge.

### *Camps*

**MEDICINE LAKE CHALET**, elevation 4,500 feet, situated at the upper (south) end of Medicine Lake at the point where the river enters the lake, is a peeled log building containing dining-room, sitting-room and limited sleeping accommodation, supplemented by floored and walled tents containing heaters. Accommodation—fifteen.

Side trips to Jacques Lake, good fishing.

**MALIGNE CHALET**, elevation 5,500 feet, situated on Maligne Lake at the outlet of the lake, comprises a main building or Chalet with a dining-room and sitting-room and a limited number of bedrooms. This building is supplemented by heated tents similar to those at Medicine Lake. Accommodation—twenty-five.

**SHOVEL PASS CAMP**, elevation 6,500 feet, situated in a basin near timber line on the Maligne Range and affording a good view of the surrounding country. In addition to a dining-room the camp is composed of well-built, floored and walled heated tents which are provided with comfortable spring beds and mattresses.

### *Transportation Schedule*

**FOUR-DAY SADDLE TRIP.** First day, leaving Jasper Park Lodge at nine a.m. and reach-



ing Medicine Lake Chalet in mid-afternoon with one hour for trail lunch on the way.

Second day, leaving Medicine Lake Chalet at nine a.m. and reaching Maligne Chalet for lunch. The motor-boat trip to the upper end of Maligne Lake (thirty-four miles return) may be taken in the afternoon.

Third day, leaving Maligne Chalet at nine a.m., reaching Shovel Pass Camp at four p.m., after having one hour for trail lunch on the way.

Fourth day, leave Shovel Pass Camp at nine a.m. and reach Jasper Park Lodge at three p.m., allowing one hour for lunch.

Cost, inclusive of motor-boat on Maligne Lake, and accommodation at the Chalets, \$80.00 per person.

**TWO-DAY MOTOR AND SADDLE HORSE TRIP.** First day, leave Jasper Park Lodge at nine a.m. and motor to Medicine Lake, transfer into motor boat, and reach Medicine Lake Chalet for lunch. Leave Medicine Lake Chalet with guide and saddle horses to reach Maligne Chalet at five p.m. Motor-boat trip to the upper end of Maligne Lake (thirty-four miles return) may be taken in the evening.

Second day, leave Maligne Chalet at nine a.m. with guide and saddle horses, reach Medicine Lake Chalet for lunch, transfer into motor-boat to lower end of lake and return to the lodge by motor car.

The inclusive cost covers transportation described and motor-boat trip on Maligne Lake, as well as meals and comfortable accommodation at the camps, which are under the supervision of the official outfitters (Fred Brewster Limited, Jasper, Alberta), but does not include breakfast the morning of departure, or dinner the afternoon of return. One person, \$60.00; two persons, \$55.00 each; three or more, \$50.00 each.

**SADDLE TRIP No. 16—Tonquin Valley Camp—Tonquin Valley and Amethyst Lake, over the Portal Creek trail to the wonderful scenic country—Amethyst Lake, Moat Lake, the Ramparts and Mount Geikie, Barbican Pass and the Geikie meadows, the Valley of**

Many Glaciers. The Tonquin Valley camp is a well-organized and comfortable tent camp in charge of a competent staff.

Transportation, first day, motor from Jasper Park Lodge to Portal Creek Trail, where guides and saddle horses are stationed to complete the fourteen miles over Maccarib Pass to the Tonquin Valley Camp. Second day, side trip through Barbican Pass to the Geikie meadows and return to Tonquin Valley Camp. Third day, return by saddle horse and motor to Jasper Park Lodge. Cost, inclusive, \$60.00 each person.

### *Eight-Day Saddle and Camping Trip*

**SADDLE TRIP NO. 17: Columbia Ice Field.** Travelling up the valley of the Athabaska River, passing en route the Athabaska and Sun Wapta Waterfalls, Mts. Kerkeslin, Whirlpool, Fryatt, Christie, and many other splendid mountains, the Columbia Ice Field is reached. One hundred and fifty square miles of ice. Majestic peaks such as the well-known Columbia (12,294 feet), Alberta (11,874 feet), Snow Dome (11,340 feet), Wooley (11,170 feet), Diadem (11,060 feet), Stutfield (11,320 feet), and many others may be visited.

This is the largest ice field in the Canadian Rockies and surmounts a triple divide giving rise to streams flowing into the Arctic and Pacific Oceans as well as to Hudson Bay.

Rates on application at the Lodge Transportation Desk.

**SADDLE TRIP NO. 18: Jasper-Mount Robson Trip.** This is a 10-day saddle trip.

Through the Tonquin Valley and Moose Pass to Berg Lake and Mount Robson. Through the Portal Basin by Portal Peak and over Maccarib Pass to camp at the base of Mount Geikie and the Rampart Range in the Tonquin Valley. One day is well spent visiting Barbican Pass and the Geikie Meadows. Down the Clairvoix Valley and the Fitzwilliam Shoulder at the base of Mt. Fitzwilliam, across the head waters of Grant Brook and the west fork of the Snake Indian River, through Colonel Pass and Moose Pass to Berg Lake Camp and Mount Robson, reaching the railroad at the latter point. A

# JASPIER PARK Lodge



very interesting day may be spent at the Berg Lake Camp visiting the Tumbling Glacier, the main Robson Glacier, or climbing Mount Mumm to the rear of the camp. This is a camping trip of unusual interest. Cost, including food, guides, horses, etc., for a minimum of three persons, two hundred and twenty dollars (\$220.00) for each person.

No. 19: Columbia Ice Fields (150 square miles of ice) via Maligne Lake and Poboktan Pass.

Leaving Maligne Lake (see description Saddle Trip No. 15).

The route lies up the valley of the Upper Maligne River, over Maligne Pass, Poboktan Pass, Jonas Shoulder and Nigel Pass at the head of the Brazeau River to the Columbia ice fields and Saskatchewan Glacier.

The return route crosses Wilcox Pass and descends the Valley of the Athabaska to Jasper, passing en route the Sunwapta and the Athabaska Falls, as well as the Athabaska Game Lick at the base of Mt. Kerkeslin.

Time, approximately fourteen (14) days, cost \$25.00 per day for one person, \$45.00 per day for two persons and \$15.00 per day for each additional person.

No. 20: Mount Robson from Jasper via Snake Indian River, Byng Pass, Twin Tree Lake, Mount Bess, Mount Chown, and Smoky River, and through the heart of the finest game country in the Canadian Rockies.

Time, approximately 12 days; cost per day, \$25.00 one person, \$45.00 two persons, \$15.00 per day each additional person.

## Hiking Trips Over Tours Where Camps Are Established

### Without Hiking Guides

Maligne Tour, four days, meals and beds included . . . . . \$20.00

Mount Robson and Berg Lake, three days, meals and beds included . . . \$15.00

Hiking Guides—\$7.00 per day, extra.

The rate of \$7.00 includes meals and bed for the guide on the established Camp Tour only.

Hiking trips to any part of the Park, ac-

companied by guide, and supported by horses. Rates based on trips of from one to seven days' duration, and include food, tents and camp equipment.

Personal baggage allowance twenty pounds per person, which will include bedding and such personal effects as are necessary for the trip, but does not include tents, which may be furnished by the party if they so desire.

1. One person . . . . . \$22.00 per day
2. Two persons . . . . . 30.00 per day
3. Three persons . . . . . 40.00 per day
4. Four persons . . . . . 50.00 per day
5. Five persons . . . . . 60.00 per day
6. Each additional person  
above five and up to ten. 10.00 per day

Rates quoted for larger parties on application, which will reduce the rate per person per day.

## Rates for Hikers—Jasper National Park Territory

### At Medicine Lake Camp

Bed	\$2.50		
Breakfast	1.25	Per day	\$ 6.75
Lunch	1.50	Per week	35.00
Dinner	1.50	Per month	135.00

### At Maligne Lake Chalet

Bed	\$2.50		
Breakfast	1.25	Per day	\$ 7.50
Lunch	1.75	Per week	42.00
Dinner	2.00	Per month	150.00

Motor Boat service on Maligne Lake 34 miles return \$8.00 per passenger.

### At Shovel Pass Camp

Bed	\$2.00		
Breakfast	1.25	Per day	\$ 6.25
Lunch	1.50	Per week	35.00
Dinner	1.50	Per month	135.00

## Rates for Hikers—Mount Robson Territory

### At Mount Robson Station Bungalow Camp

Bed	\$2.00		
Breakfast	1.00	Per day	\$5.00
Lunch	1.00	Per week	30.00
Dinner	1.25	Per month	125.00

# JASPER Park Lodge



## At Berg Lake Bungalow Camp

Bed	\$2.00		
Breakfast	1.25	Per day	\$ 5.50
Lunch	1.25	Per week	35.00
Dinner	1.50	Per month	140.00

**IMPORTANT**—To avoid delay and inconvenience, it is recommended that trail and hiking outfit be carried in guests' personal baggage.

### Important Notes

The motor and saddle horse trip is contingent on good weather conditions.

Walking or "hiking" parties given special attention.

It is very important that visitors to the Park who intend to hike or ride the trails bring with them suitable clothing, including riding or hiking boots, strong breeches, flannel or mackinaw shirt, slicker, gloves, suitable hat or cap.

Every effort, commensurate with trail conditions, will be made to keep to the hours set down in regard to departure and arrival.

No responsibility will be assumed for the loss of valuables or personal equipment.

### Fishing

Wonderful fishing trips may be arranged at Transportation Desk, Jasper Park Lodge. Jacques Lake, lying between the Maligne and Rocky Rivers, is frequently visited by enthusiastic anglers. There is also trout fishing at Beaver Dam Creek, four miles distant, Buffalo Prairie—Wabasso Lake, ten miles distant, and Hardisty Creek, located at Athabaska Falls, twenty-one miles distant. Camping and fishing trips to Jacques Lake, Buffalo Prairie and Athabaska Falls arranged.

### Swiss Guides

Swiss guides, of international reputation, are available to conduct mountaineering parties. Rates, \$8.00 per day and expenses. Hiking parties will also be arranged under experienced local guides.

### Golf

Greens fees.....	\$ 3.00 per day
do .....	15.00 per week
do .....	50.00 per month
do .....	75.00 per season

Caddy fees—"A".....	\$1.00 for 18 holes
	.50 for 9 holes
"B".....	.75 for 18 holes
	.40 for 9 holes

Arrangements for play may be made at Jasper Park Lodge. A professional is in attendance.

### Swimming Pool

The inviting outdoor swimming pool is proving a very popular attraction to lodge guests. The crystal clear water is filtered and heated and constantly changing. Dressing rooms are equipped with showers. A charge of 25 cents is made; if bathing suits rented, 50 cents.

A competent swimming instructor is in attendance at the pool, and arrangements may be made to take swimming lessons.

### Motor Cars and Horses

The motor equipment at Jasper Park Lodge comprises comfortable and luxurious seven-passenger cars and busses. The chauffeurs are an exceptionally fine type of men. Many are university students and are very careful drivers, selected following a rigorous test of their ability. They are versed in the geography and lore of the Park and add much to the pleasure of the drive by their interesting descriptive comments and explanations.

The horses are a good type of mountain horse and outfits are first class in every respect. The guides are fully qualified, experienced and thoroughly dependable men.

### Boating

Paddling on Lac Beauvert is a favored evening enjoyment. Boats and canoes are available for rent at 50 cents per hour.

### Dancing

The Lodge orchestra provides dinner and evening concerts, and music for dancing each evening, except Sunday, from 9 to 11 o'clock.

### Motion Pictures

A motion picture entertainment is given each evening, except Sunday, from 8 to 9 o'clock.



# JASPER PARK Lodge



## General Information

Arrangements can be made at the Transportation Desk in the Lodge for special motor and saddle horse trips other than those listed herein.

Picnic parties may arrange for basket lunches.

Church services of various denominations are held in the village, and at times special services are held at the Lodge during the tourist season.

The services of a graduate doctor are available at all times, and a qualified nurse is in constant attendance.

Modern stores, carrying up-to-date stocks of general merchandise, drugs, etc., are located in Jasper town.

Guests may have the advantage of the Canadian National Telegraph and Express facilities and Royal Mail service. Money may be forwarded by telegraph to Jasper Park Lodge. Mail should be addressed care of Jasper Park Lodge, Jasper, Alta., and guests are requested to leave their forwarding address when leaving.

Canadian National Railways Tourist Agent, located at the Lodge, will assist guests in all matters pertaining to tickets, train and boat reservations, etc.

For the convenience of tourists from the United States, a Canadian Customs Officer is located at Jasper Park Lodge to facilitate the clearing of tourist baggage from United States points.

## Jasper Park Lodge Rates for Season of 1930

Single . . . . . \$9.00 to \$17.00 per day  
Double . . . . . \$15.50 to \$24.00 per day

American Plan

## Altitudes

The Across Canada route of the Canadian National Railways, though flanked by the highest peaks in the Canadian Rockies including Mount Robson (12,972 feet), crosses the mountains at the lowest altitude and easiest gradient of all trans-continental lines. This is a factor of particular interest and importance to travellers unaccustomed to, or unable to stand high altitudes.

Similarly, the altitude of Jasper in the wide sweeping valley of the Athabaska is but 3,470 feet above sea level, and visitors need rise but little above this altitude to enjoy many of the attractions of this mountain playground.

# Canada's Hotels of Distinction

operated by

## CANADIAN NATIONAL RAILWAYS

CHATEAU LAURIER . . . . . OTTAWA, ONT.  
THE FORT GARRY . . . . . WINNIPEG, MAN.  
THE MACDONALD . . . . . EDMONTON, ALTA.  
PRINCE ARTHUR HOTEL . . . . . PORT ARTHUR, ONT.  
PRINCE EDWARD HOTEL . . . . . BRANDON, MAN.

†JASPER PARK LODGE . . . . . JASPER, ALTA.  
†MINAKI LODGE . . . . . MINAKI, ONT.  
†PICTOU LODGE . . . . . PICTOU, N.S.

†Open Summer Season Only

\*THE CANADIAN NATIONAL HOTEL . . . . . VANCOUVER, B.C.

††THE NOVA SCOTIAN . . . . . HALIFAX, N.S.

\* (NO NAME DECIDED) . . . . . SASKATOON, SASK.

§\*THE CANADIAN NATIONAL HOTEL . . . . . CHARLOTTETOWN, P.E.I.

‡Open May 1, 1930

§Open July, 1930

†NIPIGON LODGE . . . . . ORIENT BAY, ONT.

†HIGHLAND INN . . . . . ALGONQUIN PARK, ONT.

†GRAND BEACH HOTEL . . . . . GRAND BEACH, MAN.

\*Under Construction.

A. S. McLEAN, General Superintendent of Hotels; WALTER PRATT, General Manager of Hotels . . . . . MONTREAL, QUEBEC

# CANADIAN NATIONAL RAILWAYS

## OFFICERS OF THE TRAFFIC DEPARTMENT

R. L. BURNAP, Vice-President ..... Montreal, Que.  
 H. H. MELANSON, Asst. Vice-President ..... Montreal, Que.  
 JOHN PULLEN, Asst. to Vice-President ..... Montreal, Que.

C. W. JOHNSTON, General Passenger Traffic Manager ..... Montreal, Que.  
 A. A. GARDINER, Asst. Gen. Passenger Traffic Manager ..... Montreal, Que.  
 R. L. FAIRBAIRN, Manager, Passenger Service Bureau ..... Montreal, Que.  
 R. CREELMAN, Passenger Traffic Manager ..... Winnipeg, Man.  
 A. B. CHOWN, Passenger Traffic Manager ..... Chicago, Ill.  
 M. F. TOMPKINS, Traffic Manager ..... Moncton, N.B.  
 R. F. MACLEOD, Manager, Tariff and Ticket Bureau ..... Montreal, Que.  
 C. K. HOWARD, Man. Tourist and Convention Bureau ..... Montreal, Que.  
 A. M. KIRK, Gen. Pass. Agent, Steamship Traffic ..... Moncton, N.B.  
 F. W. ROBERTSON, General Passenger Agent ..... Moncton, N.B.  
 E. C. ELLIOTT, General Passenger Agent ..... Montreal, Que.  
 H. C. BOURLIER, General Passenger Agent ..... Toronto, Ont.

W. R. EASTMAN, General Passenger Agent ..... Chicago, Ill., U.S.  
 OSBORNE SCOTT, General Passenger Agent ..... Winnipeg, Man.  
 G. A. McNICHOLL, General Passenger Agent ..... Vancouver, B.C.

R. W. LONG, General Freight Traffic Manager ..... Montreal, Que.  
 G. T. PETTIGREW, Asst. Gen. Freight Traffic Manager ..... Montreal, Que.  
 L. MACDONALD, Freight Traffic Manager ..... Montreal, Que.  
 E. F. FLINN, Freight Traffic Manager ..... Chicago, Ill., U.S.  
 W. G. MANDERS, Freight Traffic Manager ..... Winnipeg, Man.  
 M. F. TOMPKINS, Traffic Manager ..... Moncton, N.B.  
 R. E. PERRY, Asst. Freight Traffic Manager ..... Toronto, Ont.  
 R. J. FOREMAN, General Foreign Freight Agent ..... Montreal, Que.

## PASSENGER AGENCIES

### Canada and United States

Belleville, Ont. .... H. C. Thompson ..... 243 Front St.  
 Boston, Mass. .... T. E. P. Pringle, 186 Tremont St. (Masonic Bldg.)  
 Brantford, Ont. .... J. T. O'Neill ..... 153 Colborne St.  
 Brockville, Ont. .... M. C. Dunn ..... Cor. King and East Market Sts.  
 Buffalo, N.Y. .... H. M. Morgan, 420 Main St., Liberty Bank Bldg.  
 Calgary, Alta. .... J. H. Norton ..... 218 Eighth Ave. West  
 Charlottetown, P.E.I. .... P. W. Clarkin ..... C.N. Rys. Station  
 Chicago, Ill. .... C. G. Orttenburger ..... 4 South Michigan Ave.,  
 cor. Madison, Willoughby Tower Bldg.  
 Cincinnati, Ohio .... E. C. Kennedy ..... Dixie Terminal Bldg.,  
 49 E. Fourth St.  
 Cleveland, Ohio .... H. G. Pentland, Union Trust Bldg., 925 Euclid Ave.  
 (H. L. McCaughey, 1523 Washington Blvd.,  
 Hotel Statler Bldg.)  
 Detroit, Mich. .... L. F. Lorentz ..... 3044 West Grand Blvd.  
 Duluth, Minn. .... W. E. G. Bishop ..... 430 West Superior St.  
 Edmonton, Alta. .... J. Madill ..... Cor. Jasper and 100th Sts.  
 Grand Rapids, Mich. .... C. A. Justin ..... G.T. Ry. Station  
 Guelph, Ont. .... B. A. Rose ..... 11 and 13 Wyndham St.  
 Halifax, N.S. .... J. J. Leydon ..... Cor. Barrington and George Sts.  
 Hamilton, Ont. .... Jas. Anderson ..... 7 James St. North  
 Kansas City, Mo. .... W. H. Happ ..... 705 Walnut St.  
 Kingston, Ont. .... J. P. Hanley ..... Cor. Johnston and Ontario Sts.  
 London, Ont. .... R. E. Ruse ..... 406 Richmond St.  
 Los Angeles, Cal. .... H. R. Bullen ..... 607 South Grand Ave.  
 Minneapolis, Minn. .... G. A. North ..... 518 Second Ave., South  
 Montreal, Que. .... M. O. Dafeo ..... 384 St. James St.  
 Moose Jaw, Sask. .... E. A. Robertson ..... Cor. Main and Cordova Sts.,  
 Grant Hall Hotel  
 New York, N.Y. .... F. A. Young ..... 505 Fifth Ave.  
 (C. E. Jenney ..... 505 Fifth Ave.)  
 North Bay, Ont. .... C. W. Murphy ..... 81 Main St.  
 Oshawa, Ont. .... D. C. Forrester ..... 3 King St. West  
 Ottawa, Ont. .... P. M. Buttler ..... 93 Sparks St.  
 Ottawa, Ont. .... Travel Information Bureau ..... Chateau Laurier  
 Peterboro, Ont. .... J. B. Doran ..... 324 George St.  
 Philadelphia, Pa. .... M. J. Woods, 1422 Chesnut St., Burlington Arcade  
 Pittsburgh, Pa. .... W. J. Burr ..... 505 Park Bldg., 355 Fifth Ave.  
 Portland, Me. .... G. A. Harrison ..... G.T. Railway Station  
 Portland, Ore. .... A. B. Holtorp ..... 302 Yamhill St., Pacific Bldg.  
 Prince Rupert, B.C. .... R. F. McNaughton ..... 528 Third Ave.  
 (A. P. Bibeault ..... 10 Ste. Anne St.)  
 Quebec, Que. .... J. J. Aubin ..... 234 St. Joseph St., St. Roch.  
 Regina, Sask. .... E. G. Wickerson ..... 1874 Scarth St.  
 San Francisco, Cal. .... W. J. Gilkerson ..... 689 Market St.  
 Saskatoon, Sask. .... Wm. Stapleton ..... 103 Second Ave. South  
 Seattle, Wash. .... J. F. McGuire ..... 1329 Fourth Ave.  
 Sherbrooke, Que. .... A. M. Stevens ..... 23 Wellington St. North  
 St. Catharines, Ont. .... C. J. Harris ..... 106 St. Paul St.  
 Saint John, N.B. .... L. C. Lynds ..... 49 King St.  
 St. John's, Nfld. .... A. Green, Board of Trade Bldg., 155 Water St. East  
 St. Louis, Mo. .... W. E. Rudolph ..... 314 North Broadway  
 St. Paul, Minn. .... A. H. Davis ..... 83 East Fifth St.  
 Sudbury, Ont. .... A. G. Bell ..... 26 Elm St. West  
 Toronto, Ont. .... R. E. Richmond ..... N.W. Cor. King and Yonge Sts.  
 Vancouver, B.C. .... K. E. McLeod ..... 527 Granville St.  
 Victoria, B.C. .... C. F. Earle ..... 911 Government St.  
 Washington, D.C. .... G. L. Bryson ..... 901-15th St. Northwest  
 Windsor, Ont. .... G. E. Walker ..... 361 Ouellette Ave.  
 Winnipeg, Man. .... F. J. Creighton ..... Cor. Main St. and Portage Ave.  
 Woodstock, Ont. .... N. A. B. Smith ..... 408 Dundas St.

## EUROPEAN REPRESENTATIVES

C. J. Smith, Vice-President, 17-19 Cockspur St., London, S.W. 1, Eng.  
 Cable Address "Canational" London  
 London, S.W. 1, Eng. .... P. A. Clews, European Traffic Manager, 17-19  
 Cockspur St.  
 G. E. Cowie, General Freight Agent  
 J. P. McClelland, Passenger Agent  
 London, E.C., Eng. .... E. A. Novis, City Agent, 44 Leadenhall St.  
 Liverpool, Eng. .... H. V. Caldwell, Dist. Pass. Agt., 19 James St.  
 Manchester, Eng. .... E. L. Roper, District Freight Agent  
 R. J. McEwan, District Traffic Agent, 40  
 Brazennose St.  
 Birmingham, Eng. .... J. A. Cross, Dist. Traffic Agt., 326 Broad St.  
 Newcastle-on-Tyne, Eng. .... Messrs. H. Burt & Co., Passenger Agents,  
 14 Shakespeare St.  
 Southampton, Eng. .... F. E. Birch, Dist. Traffic Agt., 134 High St.  
 Cardiff, Wales. .... S. C. Shipman, Dist. Traffic Agt., 82  
 Queen St.  
 Antwerp, Belgium. .... Wm. Taylor, Special Agt., 2 Quai Ortelius,  
 c/o Agence Maritime, De Keyser, Thornton  
 Canadian National Railways (France)  
 A. L. Regamey, General Tourist Agent, 1  
 rue Scribe  
 Paris, France. .... Hernu Peron & Co., Freight Dept., 95 rue  
 des Marais  
 Hernu Peron & Co., Pass. Dept., 61 Blvd.  
 Haussmann  
 Glasgow, Scotland. .... J. M. Walker, Dist. Traffic Agt., 75 Union St.  
 Rigby's Ltd., Pass. Agts., 74 High St.  
 Belfast, Ireland. .... Stephens & Walkington, Agts., Freight  
 Dept., 8 Victoria St.  
 Genoa, Italy. .... E. G. Laing, Special Agent, Piazza Portello 2  
 Havre, France. .... Hernu Peron & Co., Agents, 53 Quai  
 George V.  
 Hamburg, Germany. .... Adolf Blum & Popper, Agts., 17 Moncke-  
 bergstrasse.

## AUSTRALIA AND NEW ZEALAND REPRESENTATIVES

Geo. E. Bunting, Gen. Traffic Agent, "Scottish House," 19 Bridge St.,  
 Sydney, Australia  
 Sydney, Australia. .... G. F. Johnston, Gen. Agent, Pass. Dept.,  
 "Scottish House," 19 Bridge St.  
 Brisbane, Australia. .... D. R. Crawford, Agent, 108 Eagle St.  
 Melbourne, Australia. .... A. J. Simpson, Agent, Queensland Ins. Bldg.,  
 84-88 William St.  
 Wellington, New Zealand. .... F. G. Wood, Genl. Agt., Dom. Farmer's Inst.  
 Bldg.  
 Auckland, New Zealand. .... John Foley, Pass. Representative, Ferry Bldg.  
 Christchurch, N.Z. .... M. P. Caffin, Agent, 196 Hereford St.

## ORIENTAL REPRESENTATIVES

Hong Kong, China. .... A. Brostedt, Asiatic Traffic Mgr., Asiatic  
 Bldg., Queen's Rd.  
 G. M. Hemsworth, General Agent  
 Shanghai, China. .... C. I. Barr, General Agent, 608 Robert Dollar  
 Bldg., 3 Canton Rd.  
 Singapore, S.S. Settlements. .... L. L. Lawlor, Gen. Agt., Hong Kong Bank  
 Chambers  
 Yokohama, Japan. .... D. E. Ross, Gen. Agt., No. 7 Yamashita-Cho

## CUBA AND HAWAII REPRESENTATIVES

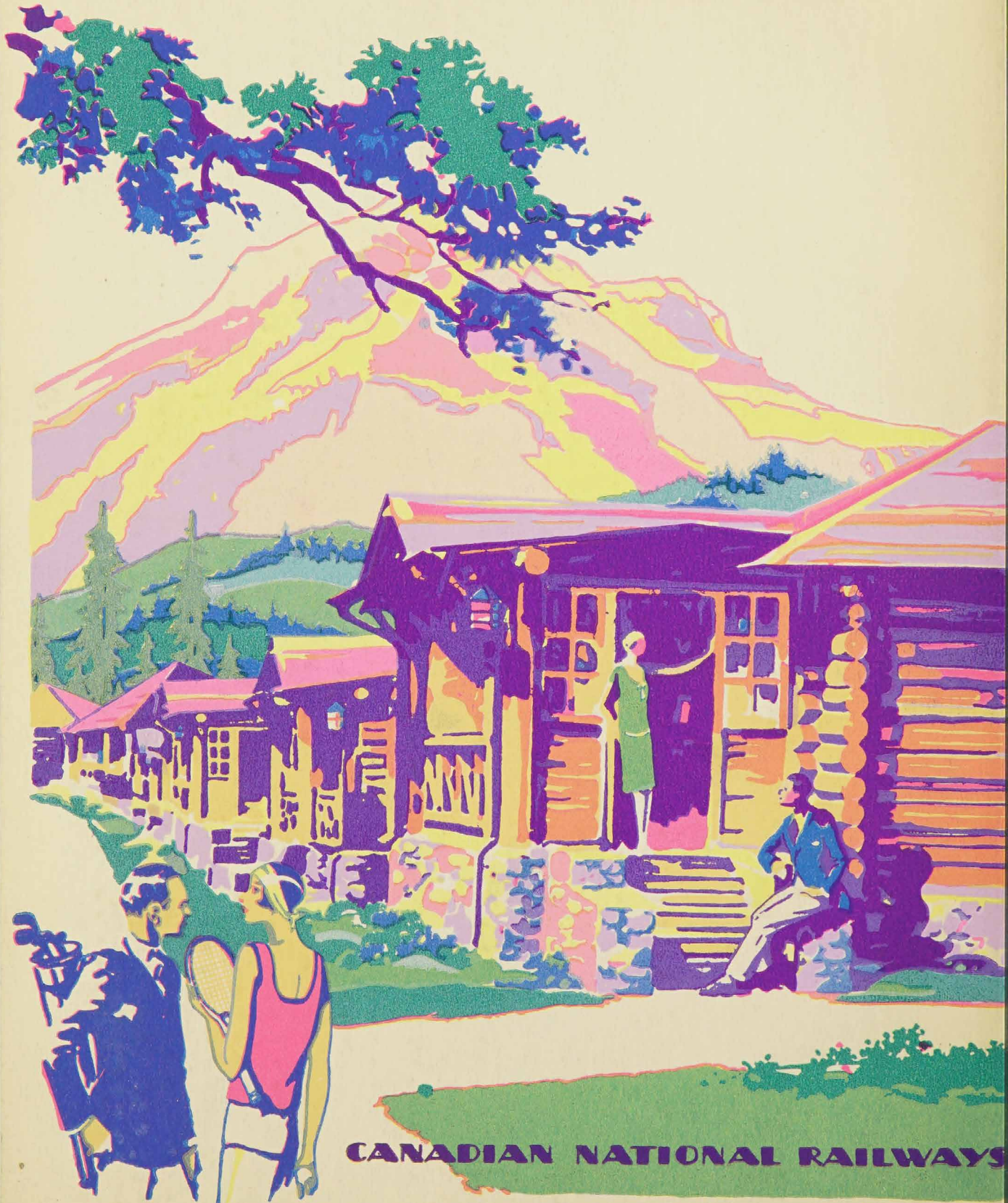
Havana, Cuba. .... West Indies Shipping and Trading Co.,  
 Agents, 75 Obispo St. or P.O. Box 138  
 Honolulu, Hawaii. .... Fred L. Waldron, Ltd., Agents

## BRITISH WEST INDIES

Bridgetown, Barbados, B.W.I. .... Lorne McCutcheon, General Agent, 26  
 Broad St.



# JASPER PARK *Lodge*



CANADIAN NATIONAL RAILWAYS