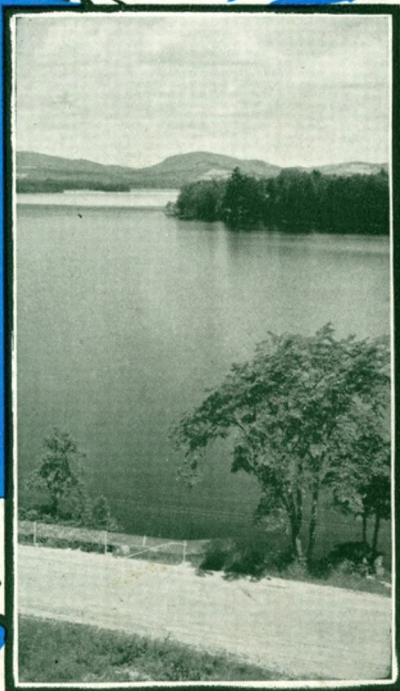
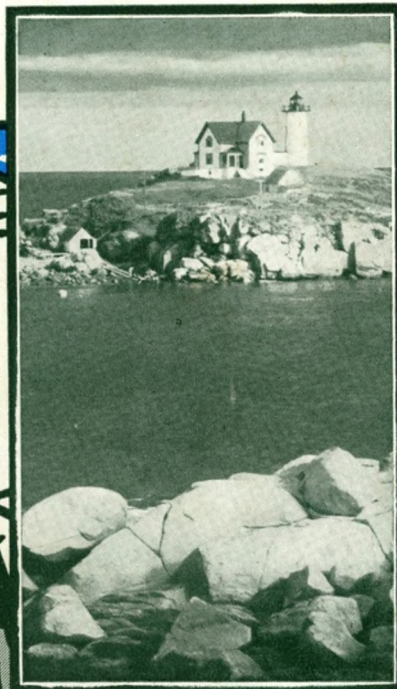


Through **THE MOUNTAINS**
OF NEW ENGLAND *to*
THE ATLANTIC COAST



**GRAND TRUNK
RAILWAY SYSTEM**

Through **THE MOUNTAINS**
OF NEW ENGLAND *to*
THE ATLANTIC COAST



**CANADIAN NATIONAL
RAILWAYS**



THE SCENERY IN THE WHITE AND GREEN MOUNTAINS IS ALWAYS PICTURESQUE, AND OFTEN IMPRESSIVE. SCORES OF MOUNTAIN GUARDED LAKES ARE BORDERED BY CHARMING RESORTS AFFORDING AN IDEAL VACATION ENVIRONMENT.

PRINTED IN CANADA

Through the MOUNTAINS of NEW ENGLAND to the ATLANTIC COAST

FOR uncounted years the New England States have occupied an outstanding position among the vacation regions of the Continent. The distinctive scenic beauties of the White and Green Mountains and the varied vacation pleasures afforded the Summer guest in Vermont, New Hampshire, Maine and Massachusetts, appeal by virtue of the fulness of their attractions and their ready accessibility. To the charm of mountain and lake is added the age-old call of the sea, experienced in all its seductiveness along the surf-washed beaches of Maine and Massachusetts. Such famous beach resorts as Old Orchard, Kennebunk, York and Marblehead are easily reached by Canadian National, as in the mountains are Poland Springs, The Rangeley Lakes, Mount Washington and Mount Mansfield. No more delightful vacation can be spent anywhere than can be found in these New England States.

Visitors return with the utmost regularity season after season and each year finds an increasing number of them bringing friends to enjoy the delights of mountain and seashore they have themselves discovered. From no part of the United States is this so marked as from the middle west. Grandsons and great-grandsons of the early settlers of that region have re-discovered the land which was a sacred tradition and a standard of conduct for their forefathers. These explorers from the middle west, by the services of the Canadian National-Grand Trunk Railways from Chicago, Detroit and Buffalo, invariably break their journey at Montreal, where a few days of sightseeing may be spent most enjoyably. Thence

southward to Portland, Boston and New York, the Canadian National-Grand Trunk system traverses the finest sections of New England's mountain region and serves the chief seaside resorts.

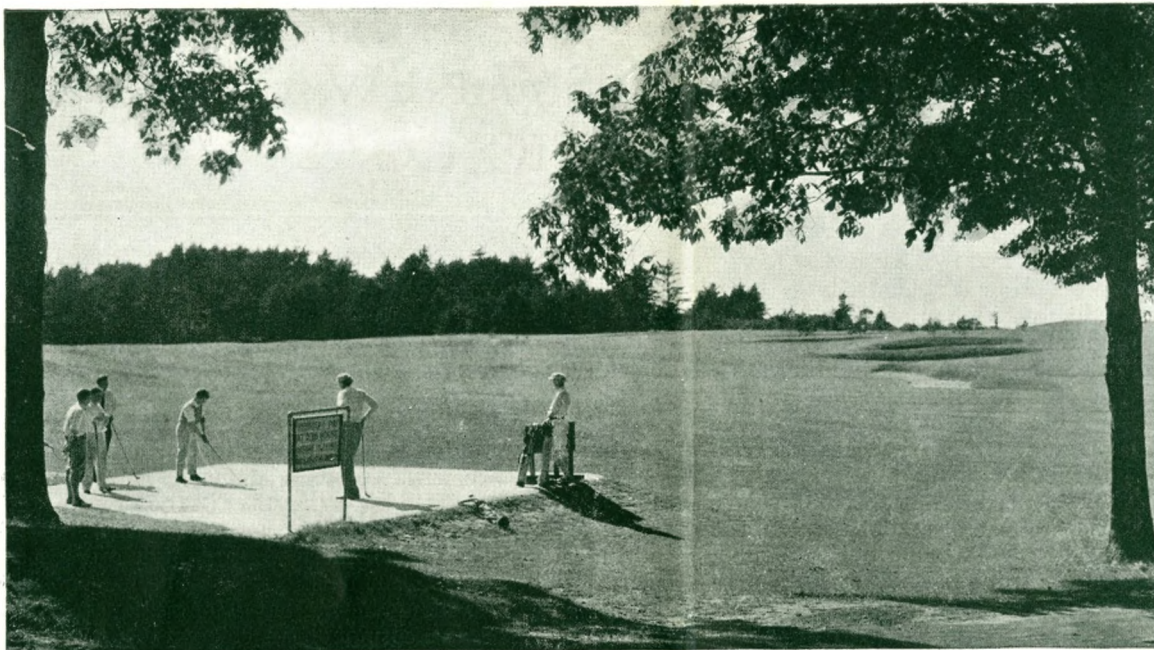
Montreal, the Gateway

Montreal, situated at the head of ocean navigation on the St. Lawrence, is the commercial metropolis of Canada. It is the greatest grain exporting port in the world and its banks and financial institutions are among the soundest and most prosperous in America. Its hotels are the last word in modernity. But it is in its strange juxtaposition of the modern and medieval that Montreal particularly attracts. Here is a cosmopolitan city with a population of over 1,000,000, two-thirds of whose inhabitants are of French descent, in which evidences of the early French settlements are found on every hand cheek-by-jowl with stately cathedrals and imposing public buildings. Almost opposite the new City Hall, for example, is the Chateau de Ramezay, built in the middle of the seventeenth century and for years the residence of French Governors. One may step the hundred yards from the very heart of the financial district to the Seminary of St. Sulpice into a centuries old walled garden.

Leaving Montreal one crosses the magnificent St. Lawrence River by means of the Victoria Jubilee Bridge. A journey of about four and a half hours through, first a hill country and beside several beautiful rivers, and later through the prosperous section that is known as the Eastern



A GLIMPSE OF OLD ORCHARD'S WATERFRONT, SUGGESTING ITS VARIED BEACH ACTIVITIES.



ONE OF THE MANY
SPLENDID GOLF
COURSES IN NEW
ENGLAND.

Townships of the Province of Quebec, brings one to the border, which is crossed just before reaching Dixville, Vermont. Almost immediately after crossing the border the beauties of New England begin to unfold themselves for the tourist. From Norton Mills, Vt., the first station on the American side of the boundary, are reached the famous Averill Lakes situated in a bowl-like valley 2,000 feet above sea level and surrounded by wonderful scenery. There are four lakes in this lovely chain which have long been known to discriminating anglers of many states as the home of land-locked salmon and golden trout. Lakeside Inn and Cottages situated on the shore of Great Averill Lake offer every modern convenience and fine fishing, tramping and mountain climbing amid the woodland scenery. Automobiles meet guests at Norton Mills Station.

Island Pond

In a pass of the eastern range of Vermont's Green Mountains, halfway between Montreal and Portland, by the summit of the divide between the Connecticut and St. Lawrence river systems, is beautiful Island Pond. Studied with lakes containing dozens of tiny islands and entirely surrounded by forest-clad mountains, this makes an ideal starting and outfitting point for mountain climbing parties. Trout, black bass, pike and pickerel are plentiful in the lakes and streams of the immediate vicinity, and in Echo Lake, half an hour distant by motor, is the best muskalonge fishing in the State.

Dixville Notch

One hundred and sixty-three miles from Montreal on the Canadian National-Grand Trunk Railways line is

North Stratford Station through which one enters the enchanting Dixville Notch of New Hampshire. Here the scenery is not merely picturesque, but of impressive grandeur, the mountain peaks, rock castellated, being reminiscent of parts of the Spanish Sierras. This impression is intensified in a little valley in the very heart of the Notch where, beside a crystal lake, 2,000 feet above sea level, stands what, at first sight, might be considered a many towered Spanish castle. This is actually "The Balsams," one of the largest and most fashionable resorts of the White Mountains, built with a background both pleasing and unusual. Here, where the steep verdure-clad mountains rise in fantastic peaks, which are reflected in the gleaming lakes at their feet, every form of outdoor recreation is offered to the visitor, including a really magnificent 18-hole golf course of 6,300 yards set in a perfect amphitheatre of mountains. Guests of "The Balsams" are met at North Stratford Station.

Two miles from North Stratford Station in another direction is the Brunswick Springs Lodge and Camps, a moderately priced and unpretentious resort, located amid the most beautiful of lake, woodland and mountain scenery. Many are attracted to this resort by five different mineral springs located on the property which are recommended by many physicians for their medicinal qualities.

Gorham

Gorham, N.H., in the beautiful Androscoggan Valley, only eight miles from Mount Washington, the objective of the great majority of visitors and mountain climbers in the region, is the entrance to Carter Notch, Pinkham Notch, The Carter Lakes, Lake of the Clouds, Tuckerman's

Ravine, Glen Ellis Falls, Crystal Cascades, Dolly Copp Campground and the Appalachian Mountain Club Camps. Gorham has a 9-hole course for those who, even in the mountains, demand their round of golf, and excellent fishing is to be had in the many streams nearby. The Glen House standing in the shadows of Mount Adams and Mount Jefferson is a comfortable little hostelry which offers good accommodation and is a favorite rendezvous for those who contemplate the ascent of Mount Washington.

Bethel

Another gateway to the White Mountains—and a most delightful one—is Bethel, Me., on the line of the Canadian National-Grand Trunk Railways. This is a typical New England town, of white colonial houses and wide tree-bordered streets, which nestles among the foothills. Bethel is one of the small New England towns which has never suffered from lack of summer visitors. A number of prominent citizens of New York, Boston and Philadelphia maintain residences here during the season, and Bethel Inn which offers a good 9-hole golf course, caters to many well-to-do families who return summer after summer. The Maple Inn also has its patrons who return annually. A daily stage line is operated from Bethel to Lakeside, at which point motor boats may be obtained for the trip up the famous Rangeley Lakes. There are five principal lakes composing the Rangeleys all connected by narrows or streams, forming a continuous water connection for fifty miles. This region is particularly famed for the excellence of its trout fishing, and expert anglers are assured of the finest of sport and really worth-while

troughies. The Rangeley Lakes may also be reached by way of the Canadian National-Grand Trunk Railways to Mechanic Falls, thence Maine Central Railroad by its Rangeley Division. The hotel accommodation at the Rangeleys is excellent and guides can be obtained at moderate rates.

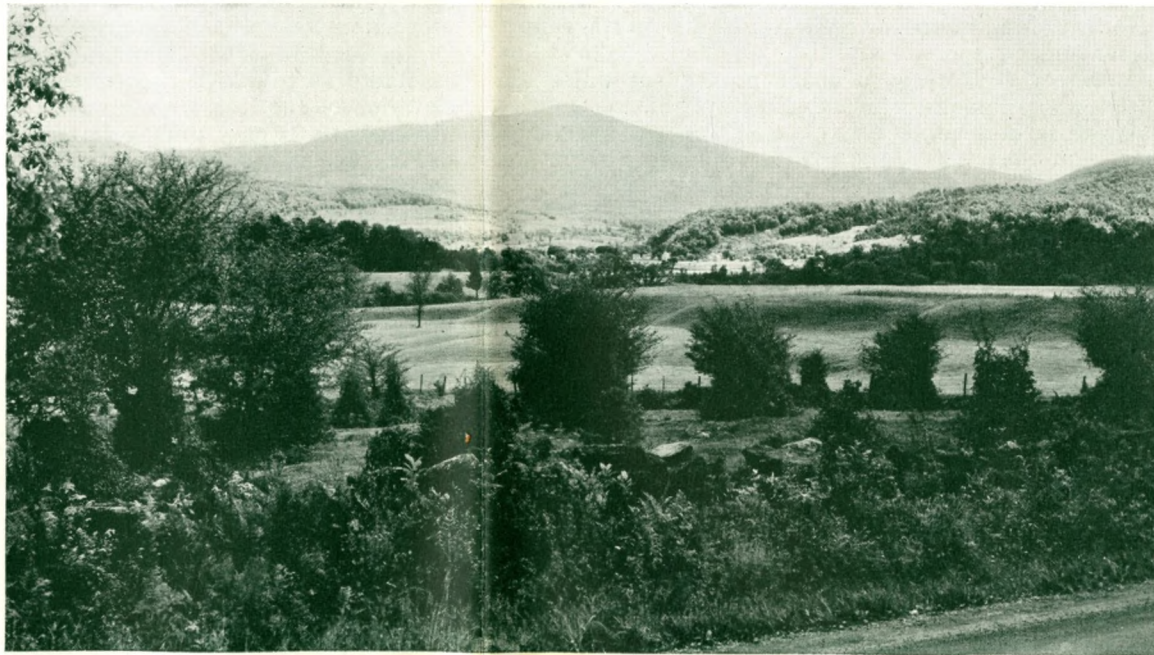
Poland Springs

Poland Springs is a health resort which is known from one end of the continent to the other. An automobile stage from the Poland Springs House and the Mansion House meets all trains at Danville Junction. The Poland Springs House and Mansion House are really the centre of a beautiful and extensive New England estate, part of which is laid out in lawns and gardens; part embraces a large model farm and a sporty 18-hole golf course and tennis courts, and part is still primeval forest. The resort stands at an altitude of 800 feet and on a clear day 110 mountain peaks may be counted in the distance.

Other Resorts

Many of those who enjoy mountain climbing and exploring, but do not care to attempt the more hazardous and arduous trips undertaken by hardened and experienced climbers, make their headquarters in the White Mountains at Locke's Mills at the eastern end of the range, sixty-five miles west of the City of Portland. The principal promontories that are within easy distance of this resort are Mount Abraham, Goss Mountain and Bird and Kimball Hills, while delightful trips may be made to the Greenwood Ice Caves, Albany Basins, Screwauger Falls and Grafton Notch. Bryant's Pond with the pretty island-gemmed

MANSFIELD, IN THE
GREEN MOUNTAINS
OF VERMONT.





OLD ORCHARD, ME.

Lake Christopher, backed by the heavily wooded Mount Christopher, is about four miles east of Locke's Mills.

Norway, Me., in the lovely Oxford Hills, is the centre of a magnificent sporting and fishing region. Lake Pennesseewassee, at Norway, a beautiful sheet of water six miles long, is famed for its black bass fishing. On the shores of the lake are located Lakeside Inn, a fine summer hotel, and Shepard's Camps, at both of which there are facilities for enjoying every variety of summer sport.

Paris Hill, three miles from South Paris, is a charming village from which a view can be obtained across the Androscoggan valley clear to the White Mountain Range which cannot be surpassed in grandeur. Oxford is another little town made beautiful by the diversity of the scenery surrounding it. From one hilltop it is possible to count more than a dozen lakes and to see the whole spread of the White Mountains. Lake Thomson, in the very middle of the town, is well stocked with bass and lake trout.

Information regarding camp life in the Maine woods and the mountains of New Hampshire and especially concerning the various camps for boys and girls may be obtained from the Maine Publicity Bureau, Portland, Maine.

The Maine Coast

The scenery of the Maine Coast with its rugged rocky capes, peninsulas and islands, is most impressive, and has

inspired the work of many artists, foreign as well as native, while its protected sandy beaches afford ideal bathing conditions for those who seek the seashore when planning a summer vacation. The beautiful City of Portland, on the granite windswept hills overlooking Casco Bay with its hundreds of islands, is the gateway to all the choicest resorts in Maine. It is directly reached from all the principal points in Canada by the through trains of the Canadian National-Grand Trunk Railways that traverse the mountains of Vermont and New Hampshire. Portland itself, situated on a peninsula less than a mile in width, and so almost surrounded by the sea, has all the attractions of a summer resort.

Casco Bay

Casco Bay sweeps in one broad regular crescent from Portland Headlight on Cape Elizabeth to the long peninsula at Harpswell, twenty miles away. It embraces a sea area of two hundred square miles and is dotted with 122 islands ranging in size from tracts of 2,000 acres to the little "Pumkin Nub." Here among these islands the deep sea fisherman is in his glory, for cod, haddock, mackerel, pollock and hake are taken in great quantities. If he is one of the more venturesome he may find thrills galore on a five or six days' expedition fishing for the giant tuna and fighting swordfish which are caught in the deeper outer waters of the bay. The swordfish range between 100 and 450 lbs. in weight while tuna have been caught in these waters weighing 900 lbs. Sportsmen intending to indulge in this latter type of fishing should make arrangements in advance for boats, guides and equipment through the manager of the Casco Bay lines, Portland, Maine.

Cushing's Island, the first island off the cape shore, has special attraction for artists on account of the many unusual opportunities for marine studies which it affords. On the seaward side it culminates in a colossal cliff known as White Head which rises directly from the sea to an elevation of 150 feet.

There is a twenty minute ferry service from Portland to Peak's Island, one of the group in Casco Bay which may be called an all-year-round suburb of Portland and the most populous although not the very largest of the islands. Long Island which is bigger has a fine surf-bathing beach and a number of summer hotels and boarding houses. Bustin Island also has fine bathing, and there are days when canoeing in this part of the bay is as safe as on any small inland lake; not so Cliff Island, one of the outer islands of the group where the waves from the open Atlantic beat against jagged rocks and gray cliffs. Great Chebeague Island, the largest in Casco Bay, is five miles long and two wide and its coast line is a series of white sandy bathing beaches broken here and there with rocky cliffs. The Diamonds and Bailey Island also hold many attractions for summer visitors; the latter has a cottage community of nearly one thousand including well-known authors, musicians and college professors.

Along the mainland of Casco Bay are many charming resorts that can be reached by trolley from Portland.

These include Falmouth Foreside, Cumberland Foreside, South Freeport and Maquoit Bay. The Canadian National-Grand Trunk Railways connect at Yarmouth with the Foreside trolleys. Wildwood Beach Park boasts of one of the best bathing beaches in this section with a 500-foot floating pontoon dock and a diving chute. Cape Elizabeth and Willard Beach are also populous settlements reached by trolley from the Grand Trunk station at Portland.

At Cape Cottage there is an attractive Casino with spacious piazzas commanding views of the harbor, the forts and upper islands. The cars to the Cape follow the shore and the scenery on the trip is delightful. Just beyond the Casino is Portland Headlight established in 1790, the first keeper being appointed by President Washington. It adjoins Fort William, the military headquarters of the State of Maine and an army post of importance. Riverton Park on the Presumpscot River, only six miles from the heart of Portland, is a pleasure resort, a feature of which are the splendid band concerts offered every evening.

Lying between Portland and Old Orchard, and easily reached by motor or trolley, are the resorts of Scarborough Beach, Higgins Beach and the exclusive society colony of Prout's Neck. At Scarborough, the Atlantic House set in a beautiful grove of old pine trees is a popular up-to-date hotel and at Prout's Neck The Black Point Inn, The Checkley and The Willows offer tennis, golf, riding and dancing beside the usual attractions.

Old Orchard Beach

Old Orchard Beach, eleven miles from Portland, has frequent train and trolley service from the city, the electric cars connecting with the Canadian National-Grand Trunk trains. Old Orchard is not only one of the most popular surf-bathing beaches on the Maine Coast, but one of the finest anywhere in America. The gradually sloping sands curve around a crescent-shaped shore which is crowded with holiday makers every day during the season. This expanse of shimmering sand, more than seven miles from tip to tip of the crescent, affords not only fine surf-bathing but the safest bathing along the coast. Hotels, most of which face the sea, offer good accommodation and back from the beach are numerous quiet boarding and rooming houses. A number of dance halls with merry-go-rounds, scooters and other attractions of a similar kind add to the merriment of this popular playground. On the pier are a theatre and dance hall. The Old Orchard Golf and Country Club has good links for the followers of the "royal and ancient game."

Kennebunk

Among other resorts nearby, the names of which are known the country over, are Kennebunk Beach and Kennebunkport. In these places opportunity is also given to combine the pleasures of the golf course with those of the shore; at Kennebunk Beach arrangements can be made for temporary membership in the Webgannet Golf Club, and there is also a very fine 18-hole course at Kennebunkport.

Many luxurious hotels overlook the beach at Kennebunkport and a number of beautiful summer homes with lovely gardens add to the attractiveness of the colony. Kennebunk Beach has also excellent hotel accommodation although the hostelries are less pretentious.

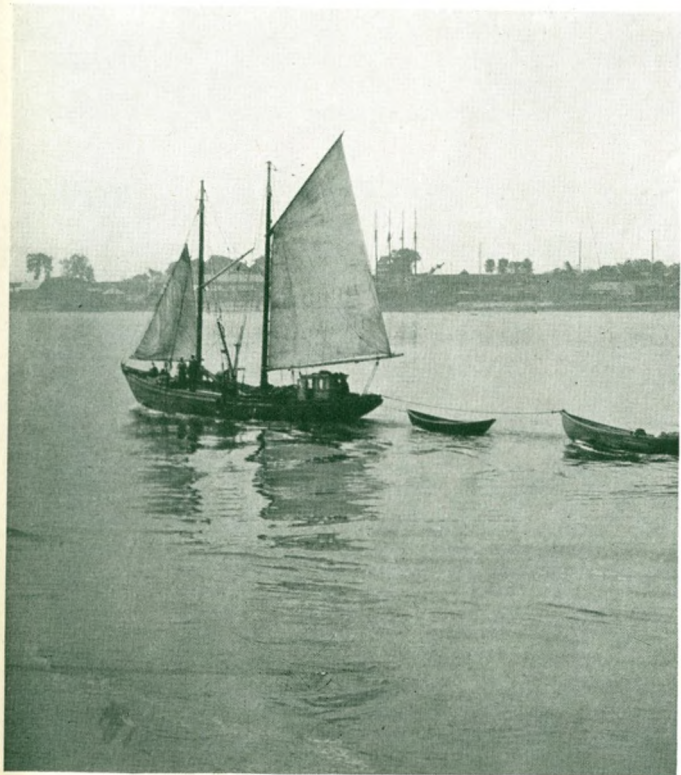
York Harbor and York Beach, together with York Cliffs, are famous as social centres and the York River offers excellent opportunities for canoeing and rowing.

Biddeford Pool is another exclusive resort which offers golf, tennis, sea bathing, boating and fishing amid scenery it would be difficult to surpass.

The Scenic Route to Boston and its Coast Resorts

From Montreal, P.Q., to Boston, Mass., connecting with Massachusetts and Rhode Island Coast resorts are two famous daily trains, "The New Englander" and "The Ambassador," noted for their comfort, speed and convenience.

The trip southward by day on "The Ambassador" is always delightful and inspiring, for the route is one of great scenic beauty, leading down through the very heart of the Green Mountains of Vermont, via the Central Vermont Railway, along the picturesque Merrimac River Valley traversed by the Boston and Maine Railway, and then through a veritable paradise of lakes and mountains



CASCO BAY

in New Hampshire, thence cutting across a busy corner of Massachusetts, through Lowell to Boston. Travelling by "The New Englander" entails evening departure from Montreal and an overnight journey, arriving at Boston in the early morning.

The route from Montreal to Boston and its coast resorts is by way of the Victoria Jubilee Bridge, passing through the pretty towns of St. Johns and Iberville and across the international boundary to St. Albans, Vt. Both St. Albans and Waterbury, Vt., a little further on, are excellent spots from which to start a vacation in the Green Mountains State. From the former a number of entrancing trails lead from the small city to wooded mountains and a dozen good fishing lakes and streams. Near Waterbury, in the Green Mountain Range are such interesting points as Smugglers Notch, the Lake Mansfield Trout Club and Camel's Hump, which is Vermont's second highest peak with an altitude of 4,088 feet. The Mt. Mansfield Hotel which is reached through the little village of Stowe close to Waterbury is on the summit of Vermont's highest mountain 4,410 feet above sea level from which a marvelous view can be obtained of the entire range of the Green Mountains, Lake Champlain, much of the Adirondacks and the country north to Mount Royal. Montpelier, the capital of Vermont, reached through Montpelier Junction, is set amid most enchanting woodland and mountain scenery, and a few miles away are the thirty lakes of Woodbury and Calais, while the city itself has excellent hotels, fine tennis courts and sporty golf links. Woodstock is a restful mountain resort reached from White River Junction which not only has a fine 18-hole golf course, but many trout streams which assure good creels to the fisherman.



From White River Jet., the route lies over the Boston and Maine Railway, passing through Lebanon and Canaan, both lovely resorts surrounded by lakes and hills; then on through such busy cities as Concord, Manchester, Nashua and Lowell in New Hampshire to Lowell, Mass., and on to Boston, that outstanding New England metropolis and gateway to the famous Coast Resorts of Marblehead, Gloucester and Rockport to the north, and Cape Cod to the southward.

To New York, Philadelphia and Washington

A quick, advantageous and altogether delightful route from Montreal to New York, Philadelphia and Washington is that traversed by those perfectly equipped popular international trains—"The Washingtonian" and "The Montrealer."

After leaving Montreal and following the Richelieu River and Lake Champlain, the same enchanting Green Mountain scenery inspires you and the same resorts are passed as far as White River Jet. as were described en route to Boston. Beyond White River Jet. the picturesque and historic Connecticut River Valley is traversed via the Boston and Maine Railway, passing through such important New England cities as Brattleboro, Northampton and Holyoke to Springfield, Mass.

From Springfield, the route via the New York, New Haven and Hartford Railway is most interesting, following the Connecticut Valley to Hartford, Conn., thence on to New Haven and over the famous Hell Gate Bridge route to the Pennsylvania Station, New York, after which it continues over one of the finest steel highways on the continent to Philadelphia and Washington.



IN THE WATER OR ON THE SANDS, THE SEASHORE OFFERS RARE FUN TO KIDDIES, AND THEIR ELDERS,—FRESH AIR AND SUN TAN, WITH AN ADDITIONAL COATING LAID ON BY THE SALT-TANGED SEA BREEZE

HOTELS, TOURIST ACCOMMODATION, CAMPS AND GOLF COURSES

P.O. Address and Hotel or Boarding House	Proprietor or Manager	Distance from Station	No. of Rooms		RATES	
			With Bath	Without Bath	Per Day	Per Week
					American Plan unless marked with "E" to indicate European plan	
MAINE						
BAILEY'S ISLAND (via Portland)					\$	c.
Hillside Cottage*	Mrs. C. Slinnett	18 miles			2.25	14.00 up
Homestead†	Mrs. T. E. Hazell	18 miles	30		On App	lication
Johnson*	H. F. Johnson	18 miles			3.00	15.00 up
Seaside Cottage*	Mrs. F. E. Cram	18 miles			On App	lication
Willow Cottage*	Mrs. W. E. Johnson	18 miles			On App	lication
Woodbine†	Mrs. H. S. Slinnett	18 miles			On App	lication
BATES						
Snow Falls Inn	H. N. Bragdon	3 miles	25		3.00 up	20.00 up
BETHEL:						
Bethel Inn†	Bingham & Upson	1 mile	50	25	6.00 up	42.00 up
BIDDEFORD:						
Ocean View	Henry D. Evans	9 miles	20	50	6.00 up	23.00 up
Seaview Inn†	R. H. Bryant	9 miles	60	12	On app	lication
BIRCH ISLAND (via Portland)						
Birch Island House*	F. C. Johnston	15 miles			On App	lication
BRYANT'S POND						
Birch Villa Inn*	F. S. Wiske	350 yards	5	30	On app	lication
Pine Lodge	Mrs. L. M. Currier	300 yards		70	3.75	21.00
CHEBAQUE ISLAND: (via Portland)						
Grannell Cottage*	Mrs. S. L. Grannell	10 miles			2.50	12.00 up
The Hamilton	Ralph E. Rowe	10 miles	22	70	5.00 up	35.00 up
Hamilton Villa†	Alf. E. Hamilton	10 miles		40	3.50	15.00 up
Island View House†	L. F. Hamilton	10 miles		50	3.50	16.00 up
Summit House and Cottages†	Mrs. C. W. Hamilton	10 miles		40	3.00	16.00 up
CLIFF ISLAND (via Portland)						
The Beeches†	Mrs. C. Pettengill	8 miles		32	3.00	16.00 up
COUSINS ISLAND (via Portland)						
Ridge House	Mrs. M. L. Hamilton	8 miles			On App	lication
EAST HARP SWELL (via Portland)						
Oakledge*	Irving G. McCall	15 miles			On App	lication
FORTUNE ROCKS (via Biddeford Stn.)						
The New Rocks	L. E. Emins	9 miles	6	21	6.00 up	25.00 up
HARP SWELL (via Portland)						
Old Fort Homestead*	Mrs. C. I. Stover	15 miles			2.50	14.00 up
HIGGINS BEACH (via Portland or Seaboro)						
Higgins*	E. S. Higgins	3 miles		30	On App	lication
KENNEBUNK The Greenleaf	P. D. Greenleaf	¼ mile		20	On App	lication
KENNEBUNK BEACH: (via Kennebunk)						
Atlantic†	Eagle Rock Co.	3 miles	50	55	5.00 up	30.00 up
Eagle Rock†	C. E. Loomis	3 miles		31	5.00 up	28.00 up
Granite State†	G. H. Yates	3 miles		54	3.00 up	20.00 up
New Bass Rock†	Henry H. Walsh	3 miles		40	5.00	20.00 up
Narragansett†	G. J. Wentworth	4 miles		75	4.00 up	28.00 up
Sea View†	Mrs. E. A. Hubbard	3 miles	11	40	5.00 up	28.00 up
Wentworth House*	R. K. Wentworth	3 miles	10	50	5.00 up	30.00 up
KENNEBUNKPORT: (via Kennebunk)						
Arlington†	Jas. B. Yates	4 miles	10	40	4.50 up	24.00 up
Arundel†	Miss E. Shannon	4 miles		50	6.00 up	40.00 up
Beachwood House	Mrs. Martha Bate	7 miles		20	3.50 up	18.00 up
Breakwater Court†	Mrs. R. T. Norton	4 miles	100	30	12.00 up	56.00 up
Forest Hill†	D. F. Toothaker	3 miles		33	3.00	18.00
Greenleaf	P. D. Greenleaf	¼ mile		60	4.00	28.00
Homestead	A. W. Jeffrey	6 miles		20	3.00 up	17.00 up
New Belvidere*	J. L. Allen	7 miles		50	4.00 up	21.00 up
Nonantum*	Felix Bridger	4 miles	50	40	7.00 up	42.00 up
Oceanic & Cottages*	W. L. Merrill	4 miles	12	74	6.00 up	25.00 up
Old Fort Inn*	J. E. Duffield	4 miles		6.00 up		
Parker House†	S. T. Bennett	3½ miles	23	33	5.00 up	23.00 up
Seaside House†	Jos. I. Gooch	3 miles			4.00	22.00 up
Sagamore†	W. A. Yates	4 miles		30	On App	lication
Shawmut Inn†	Mary R. Matthews	6 miles		7	5.00	28.00
LITTLE JOHN'S ISLAND (via Portland)						
Rockmere House	Mrs. K. H. Prescott	8 miles			On App	lication
LOCKE'S MILLS						
Christies Inn*	Ern. W. Christie	2½ miles		17	3.00	20.00
Scholl's Camps*	W. A. Scholl	At Stn.		10	2.00	
LONG ISLAND (via Portland)						
Beach Ave. House†	Mrs. W. A. Merrill	6 miles		12	2.50	15.00 up
Casco Bay House†	Chas. E. Cushing	6 miles		40	3.00	18.00 up
Dirigo House†	The Misses Perry	6 miles		60	3.50 up	21.00 up

* Open in Summer only. † Tennis. ‡ Lawn Bowling. † Golf.

REACHED BY CANADIAN NATIONAL RAILWAYS

P.O. Address and Hotel or Boarding House	Proprietor or Manager	Distance from Station	No. of Rooms		RATES	
			With Bath	Without Bath	Per Day	Per Week
					American Plan unless marked with "E" to indicate European plan	
MAINE—Continued						
NORTH HARP SWELL (via Portland)					\$	c.
Hildreth House	C. A. Hildreth	15 miles			On App	lication
Pine Crest Farm	Mrs. Thos. L. Downs	15 miles		15	2.50 up	12.00 up
NORTH NEWRY (via Bethel)						
Poplar Tavern†	W. W. Kilgour	10 miles	6	40	3.00	18.00 up
NORWAY:						
Beal's Tavern†	F. Robt. Seavey	200 yards	10	30	4.00 up	24.00 up
Cedarbrook Farm	E. W. Hutchins	4 miles		15	3.00	17.50 up
John Shepard Camps	John Shepard	2 miles	(25 C	amps)	On app	lication
Lakeside Inn	J. Insley	3 miles		30	On app	lication
Maple Lane Spring House†	Mrs. F. H. Perry	3 miles		6	3.50	17.00 up
Brown's Camps	Harry Brown	3 miles		25	On app	lication
OGUNQUIT: (via Wells Beach)						
Chapman House	Mrs. N. F. Chapman	6 miles		20	4.00 up	25.00 up
Clark's†	Jos. B. Clark	6 miles		5	26	5.00 25.00 up
Colonial*	Geo. R. West	5 miles		12	38	4.00 up 25.00 up
High Rock*†	J. P. Littlefield	5 miles		40	4.00	20.00 up
Hillcrest Inn	H. W. Wear	6 miles		10	20	5.00 up
Ocean View House*	Mrs. G. A. Adams	5 miles		29	3.00 up	17.00 up
Onto†	Knigt & Merrill	5 miles		12	53	5.50 up 26.00 up
Riverside††	A. L. Staples	3 miles		10	60	5.00 up 25.00 up
St. Aspinquid†	L. E. Hall	6 miles		17	28	5.00 up 35.00 up
Sparhawk†	N. P. M. Jacobs	6 miles	100	60	6.00 up	35.00 up
Sachem†	Proctor Fisher	5 miles		10	4.00	25.00 up
The Inn*	H. G. Nichols	6 miles		22	5.00 up	30.00 up
The Lookout*†	Merrill Hotel Co.	5 miles		41	109	5.00 up 35.00 up
Walnut Grove House*	A. J. Perkins	5 miles		40	3.50 up	21.00 up
OLD BIRCHARD:						
Abbott†	Minnie A. Mafr			45		5.00 30.00
Atlantic††	P. W. Stevens	200 yards		50		4.00 22.00 up
Avenue House*	A. Ahlin	200 yards				5.00 30.00
Bay View House*	Sld. A. Staples	2 miles		12	88	On App lication
Batchelder††	Mrs. J. C. Batchelder	250 yards		60	4.00	21.00 up
Bernard House	Geo. H. Bernard	¼ mile		50	3.00 up	21.00 up
Bethel Home*	Mary E. Gray & Elizabeth Cole	300 yards		10	1.00 E.	
Billow House††	Chas. E. Torrey	1 mile		30	4.00	
Boydens†	H. O'Neil	300 yards		30	3.00 up	19.00 up
Breakers-by-the-Sea*	G. D. Sears	¼ mile		20	On app	lication
Brunswick*†	J. F. Hutchinson	200 yards		50	30	5.00 up 35.00 up
Butler House*	Mrs. E. Bauer	100 yards		45	On app	lication
Chaselholme*	Nettie L. Chase	¼ mile		35	2.50 up	15.00 up
Eaton Home and Cottages†	Mrs. W. H. Eaton	¼ mile				3.50 20.00
Elite*	Edmond Gaulet	200 yards		8	42	1.50 E. up 10.00 E. up
Empire†	Kassell Miller	300 yards		15	100	5.00 up On App.
Everett†	F. H. Libby	500 yards		10	55	3.50 up 18.00 up
Forest Pier Annex*†	Mrs. Hattie Smith	200 yards		21	1.50 E. up	8.00 E. up
Goodall†	N. D. McKenney	300 yards		25	1.50 E. up	8.00 E. up
Grand Manor*	Mrs. I. Cowgill	¼ mile		19	2.00 up	14.00 up
Highland*	Mary J. Williamson	¼ mile		30	3.00	16.00
Ingliside*	Howard T. Fogg	200 yards		40	4.00 up	20.00 up
Lafayette†	J. H. Goodkowsky	300 yards		25	80	6.00 35.00
La Reine††	Mrs. M. Simensky	¼ mile		10	60	6.00 up 30.00 up
Louveau*	Geo. E. Letourneau	200 yards		40	5.00 up	28.00 up
Long View*	Miss I. L. Melver	¼ mile		25	3.50 up	19.00 up
Marshall House*†	Hiram Marshall	60 yards		5	1.50 E. up	7.00 E. up
Merrill*	R. C. Page	¼ mile		40	4.00 up	24.00 up
Montreal House*†	R. H. Bryant	300 yards		50	5.00 up	31.50 up
Morin House	Mrs. R. Pelletier	300 yards		60	4.00 up	25.00 up
New Linwood*	Jos. Halgh	300 yards		55	4.00 up	23.00 up
New Palmer House*	Mrs. Jacques	¼ mile		50	On App	lication
New Vendome*	Miss J. Ledoux	200 yards		40	2.00 E. up	12.00 E. up
Ocean House*	L. Abbott	¼ mile		80	5.00 up	28.00 up
Ocean Park House*	F. H. Thurston	1 mile		40	3.00 up	20.00 up
Ocean Rock House*†	Mrs. H. Leonard	¼ mile		18	3.00	20.00
Old Orchard Hse*†	S. G. Samson	50 yards		50	150	7.50 up 37.50 up
Point-of-View*†	Mrs. L. M. Hunt	¼ mile		25	3.00 up	19.00 up
Revere House*†	Stanislaus Zbyszko	¼ mile		37	4.00	25.00
Roseland†	H. M. Davis	300 yards		30	2.00 E.	10.00 E. up
Seagate House*	H. S. Gerrish	30 yards		15	60	1.00 E. up 7.00 E. up
Seaview Inn*	Mrs. W. W. Harman	¼ mile		20	2.00 E. up	14.00 E. up
Seashore House*	F. P. Harris	¼ mile		30	6.00	25.00
Sea Slide House*	Mrs. J. W. Anderson	¼ mile		21	3.50	20.00 up
Vermont*	G. H. Kitchen	¼ mile		45	On app	lication
Vesper††	W. F. Benson	350 yards		25	50	4.00 up 25.00 up
Western*†	Ed. Fieldhouse	200 yards		40	1.50 E. up	8.00 E. up
Westlook*	E. F. Cote	¼ mile		20	2.50 E. up	12.00 E. up
ORR'S ISLAND (via Portland)						
Casco Cottage*	Fannie E. Boyce	18 miles		30		12.00 up
Merritt House*	G. E. Fides	18 miles		35	3.50	20.00 up

* Open in Summer only. † Tennis. ‡ Lawn Bowling. † Golf.

P.O. Address and Hotel or Boarding House	Proprietor or Manager	Distance from Station	No. of Rooms		RATES	
			With Bath	Without Bath	Per Day	Per Week

MAINE—Continued

PARIS HILL (P.O. Par Hubbard House)	s. Me.) Mrs. E. T. Hubbard	¼ mile	40		\$ c.	\$ c.
PEAKS ISLAND: (via Portland)						
Avenue*†	Devine & Latham	3 miles	40		3.50up	20.00 up
Bay View*†	Mrs. C. W. Howard	3 miles	80		3.50	18.00 up
Innes House*†	Mrs. A. E. Lorette	3 miles			4.00	20.00
Oak Cottage*†	Nellie M. McIntyre	3 miles	20		3.00	20.00
Oceanic House*	W. R. & A. C. Sterling	3 miles	40		4.00up	22.00 up
Ye Headlands Inn*	Wm. H. Simon	3 miles				
PINE POINT						
Look-Away-Inn*	F. W. Ruggles	1 mile	25		3.00	17.50
Phoeni*†	Mrs. J. C. Haynes	1 mile	20		3.50up	15.00up
POPHAM BEACH: (via Bath on M.C. Ry.)						
Riverside*†	F. S. Hunniston & Son	16 miles	42		4.00	18.00 up
PORTLAND:						
Columbia	D. B. Smith	1 mile	100	35	2.00E.up	
Congress Square	Henry P. Rines	½ mile	176	174	2.50E.up	
The Eastland*	Henry P. Rines	½ mile	369		3.00E.up	
Falmouth	H. I. Bridges	1 mile	50	150	2.00E.up	
Graymore	C. E. Calden	½ mile	150	50	2.00E.up	
Hilton Hall	Mrs. V. S. Jope	1 mile		30	1.50E.up	
Kenmore*	P. B. Jenness	¾ mile		60	1.50E.up	
Lafayette	J. Cunningham Co.	1 mile	180	70	3.00E.up	
New Chase House	R. Himmelman	¾ mile	25	75	1.50E.up	
Victoria	H. J. Lessard	1½ miles	12	3	1.00E.up	7.00E.up
Sherwood	Wm. Jalbert	1 mile	38	50	4.00 up	25.00 up
West End	F. J. Harrigan	200 yards	50	115	1.00E.up	7.00E.up
Windsor	Henry Kaub	½ mile	15	70	1.50E.up	9.00E.up
Ye Longfellow Inn	H. H. Pease	½ mile	8	18	4.00 up	25.00 up
Y.W.C.A.	Y.W.C.A.	1 mile		100	1.00E	
PROUT'S NECK: (via Portland or Scarborough)						
Black Point Inn*†	Samuel F. Boyd		47	15	12.00	On app.
Cammock House*†	A. S. Stevens		12	20	3.00up	
Checkley House*†	Mary H. Foss		30	30	6.00up	40.00 up
Lee House*††	Margaret M. Lee			25	3.00up	
Oceanside	J. Barrett			30	3.50	18.00 up
West Pt. House*††	R. R. Jordan			33	On App	11.00 up
Willows*†	Mrs. H. C. Larrabee			20	34	5.00up
SCARBORO BEACH						
Atlantic House*	J. R. Knight	1 mile	20	80	6.00up	27.50 up
SOUTH HARPSWELL (via Portland)						
Merrycoenag House*	C. A. Dickey	15 miles		30	3.00up	21.00 up
Sea Gables*	L. H. Merrow	15 miles		30	3.50	18.00 up
SOUTH POLAND: (via Danville Jet.)						
Mansion House*	H. Ricker & Sons	5 miles	70	20	7.00up	49.00 up
Poland Spg. House*††	H. Ricker & Sons	5 miles	190	90	7.00up	49.00 up
SOUTH PORTLAND (via Portland)						
Grand View Cottage*	C. E. Johnson	2¼ miles		54	On app	11.00 up
The Cloyester*††	W. E. McIntyre	3½ miles		35	4.00up	21.00 up
Willard Inn & Cottages*	Mrs. M. Willard	3 miles		30	3.00up	18.00 up
UPTON (via Bethel)						
Lake Hse & Camps*†	T. A. Durkee	28 miles		25	3.00up	17.50 up
WELLS BEACH						
Bellevue House*	F. Sevigny	2 miles		15	2.50up	15.00 up
Minnetonka	Mrs. G. H. Burnham	2 miles		20	4.00up	25.00 up
Ocean View*	Mrs. Flo. Cowen	2 miles		40	4.00up	25.00 up
YARMOUTH						
Drinkwater House & Cottages*†	Mrs. E. Drinkwater	3 miles		80	4.00	21.00 up
Homewood & Cottages*†	Burton P. Lyman	2 miles	20	22	5.00up	30.00 up
Village Inn	H. L. Simonton	300 yards		15	2.50up	16.00 up

NEW HAMPSHIRE

BERLIN					\$ c.	\$ c.
Berlin House	J. A. Gaynor	100 yards	20	55	1.50E.up	
Revere House	E. J. McNally	100 yards		40	3.50up	21.00 up
DIXVILLE NOTCH (via Colebrook on Maine Cent. R.R.)						
The Balsams	J. J. Lannin & Co.		(Acc. 425)		On App	11.00 up

* Open in Summer only. † Tennis. ‡ Lawn Bowling. † Golf.

NEW HAMPSHIRE—Continued

GORHAM:					\$ c.	\$ c.
Mt. Crescent House*	John H. Boothman (P.O. Randolph)	2¼ miles	6	17	4.00	18.00 up
Mt. Madison House*†	C. A. Chandler	¼ mile	50	100	3.00up	On App.
The Gorham Inn	D. W. Clark	1¼ miles		35	4.00	18.00 up
Glen House	E. Libby & Son Co.	9 miles	30	30	5.50	35.00
The Ravine House	Ravine Hse Co. Inc. (P.O. Randolph)	6 miles	40	60	5.50up	20.00 up
Willis House and Cottage*††	J. R. Evans	600 yards		28	4.00	18.00 up
GROVETON						
Eagle*†	H. J. Johnson	100 yards		5	30	3.00up
Union House	E. N. McConnell	700 yards		60	On App	11.00 up
NORTH STRATFORD						
Brunswick Springs Lodge	J. C. Hutchins	2½ miles		25	3.00up	20.00 up
The Stratford	W. Smart			30	3.00up	
SHELBURNE:						
Androsoggin Inn	J. Tanner	3 miles		40	3.50	18.00
Evans Cottage*†	J. B. Evans	1 mile		10	3.00	
Open Gate	Mrs. K. V. Backus	½ mile		10	3.00	16.00
Phillbrook Farm*	A. E. Phillbrook	1 mile		40	3.50	18.00 up
River View Farm	A. Wilson	¾ mile		10	2.50	15.00
Shelburne Basin Camp	J. Watson	5 miles		10	3.00	16.00
The Gates Cottage	Miss Sarah A. Gates	2 miles		15	3.00	18.00 up

VERMONT

AVERILL (via Norton Mills St Cold Spring Camp*†)	tn.) Miss H. A. Quimby	4½ miles	23	ca bins	5.50up	37.50 up
BARNARD (via Bethel Stn.)						
Silver Lake Tavern†	Burrill & White	8 miles		50	4.00	20.00 up
BARRE:						
Hotel Barre*†	J. F. Rowen	¼ mile	35	65	On App	
BETHEL						
Bascom*	Harry Emery	200 yards		10	18	On App
BRATTLEBORO:						
Brooks House*	Geo. E. Sherman	¼ mile	30	70	On app	11.00 up
BURLINGTON:						
Allenwood Inn	E. P. Woodbury	1 mile		25	On app	11.00 up
New Sherwood	F. Wettengel	½ mile	75	225	On App	11.00 up
Hotel Vermont	John Harding	¼ mile	100	70	On App	11.00 up
Hotel Van Ness	John Harding	¼ mile	60	75	On App	11.00 up
CAMBRIDGE						
Cambridge	Geo. H. Mylkes	¼ mile	2	11	4.50up	On App.
ENOSBURG FALLS						
New Quincy House†	Robert Gilpin	20 yards	20	10	3.50up	21.00 up
ESSEX JCT						
Lincoln Inn	J. H. Viele	250 yards		26	5.00up	30.00 up
HIGHGATE SPRINGS:						
Franklin House†	Cadorette & Son	¼ mile		75	4.00	21.00 up
Highgate Springs†	E. C. Hilton	¼ mile		30	4.00	21.00 up
JEFFERSVILLE						
Hotel Melendy	I. J. Melendy	250 yards		25	3.50up	21.00
MONTPELIER:						
Pavillon	Heaphy Bros	100 yards	40	86	4.50up	28.00 up
MOUNT MANSFIELD (via Waterbury Stn.)						
Mt. Mansfield*	E. H. Long	15 miles		50	5.00up	On App.
NORTON MILLS						
Lakeside Inn*†	W. E. Jacobs	4½ miles		30	4.00up	25.00 up
RANDOLPH:						
Randolph Inn	Mrs. B. C. Sheldon	20 yards	40	10	On App	11.00 up
Hotel Maples	Mrs. B. C. Sheldon	20 yards	25	10	On App	11.00 up
RICHFORD						
American House*†	N. O. Smith	½ mile	5	35	3.50up	24.50 up
SHELDON						
Portland House	Mrs. G. H. Thomas	¼ mile		17	3.00	
ST. ALBANS:						
Spencer House	Petrie & Kelley	200 yards		20	3.00	16.00 up
The Tavern	H. D. Carlisle & Son	200 yards	40	40	On App	11.00 up
SOUTH ROYALTON						
So. Royalton House	K. E. Hilton	100 yards	5	25	4.00up	On App.
STOWE (via Waterbury Stn.)						
Mountain Rest*	Mark L. Poor	10 miles		40	2.00	14.00
Green Mountain Inn	L. L. Bodman	10 miles		45	4.00	21.00
The Lodge*	J. T. Lance	10 miles		25	4.50up	25.00
WATERBURY:						
Mt. Mansfield Hotel*	C. A. Riley	20 miles		40	4.50up	25.00 up
Waterbury Inn*†	W. & D. Danls	200 yards	35	35	5.50up	35.00 up
WHITE RIVER JCT						
Coolidge	N. P. Wheeler	100 yards	50	100	On app	11.00 up
WINDSOR:						
Windsor House†	L. E. Springer	200 yards	25	35	4.00up	28.00 up
WOODSTOCK:						
Woodstock Inn†	A. B. Wilder	¼ mile	46	44	6.00up	40.00 up

* Open in Summer only. † Tennis. ‡ Lawn Bowling. † Golf.

CANADIAN NATIONAL RAILWAYS

OFFICERS OF THE TRAFFIC DEPARTMENT

R. L. BURNAP.....	Vice-President.....	Montreal, Que.
H. H. MELANSON.....	Asst. Vice-President.....	Montreal, Que.
JOHN PULLEN.....	Asst. to Vice-President.....	Montreal, Que.

C. W. JOHNSTON.....	General Passenger Traffic Manager.....	Montreal, Que.
A. A. GARDINER.....	Asst. Gen. Passenger Traffic Manager.....	Montreal, Que.
R. L. FAIRBAIRN.....	Manager, Passenger Service Bureau.....	Montreal, Que.
R. CREELMAN.....	Passenger Traffic Manager.....	Winnipeg, Man.
A. B. CHOWN.....	Passenger Traffic Manager.....	Chicago, Ill., U.S.
M. F. TOMPKINS.....	Traffic Manager.....	Moncton, N.B.
R. F. MACLEOD.....	Manager, Tariff and Ticket Bureau.....	Montreal, Que.
C. K. HOWARD.....	Man. Tourist and Convention Bureau.....	Montreal, Que.
A. M. KIRK.....	Gen. Pass. Agent, Steamship Traffic.....	Montreal, Que.
F. W. ROBERTSON.....	General Passenger Agent.....	Moncton, N.B.
E. C. ELLIOTT.....	General Passenger Agent.....	Montreal, Que.
H. C. BOURLIER.....	General Passenger Agent.....	Toronto, Ont.
W. R. EASTMAN.....	General Passenger Agent.....	Chicago, Ill., U.S.
OSBORNE SCOTT.....	General Passenger Agent.....	Winnipeg, Man.
G. A. McNICHOLL.....	General Passenger Agent.....	Vancouver, B.C.

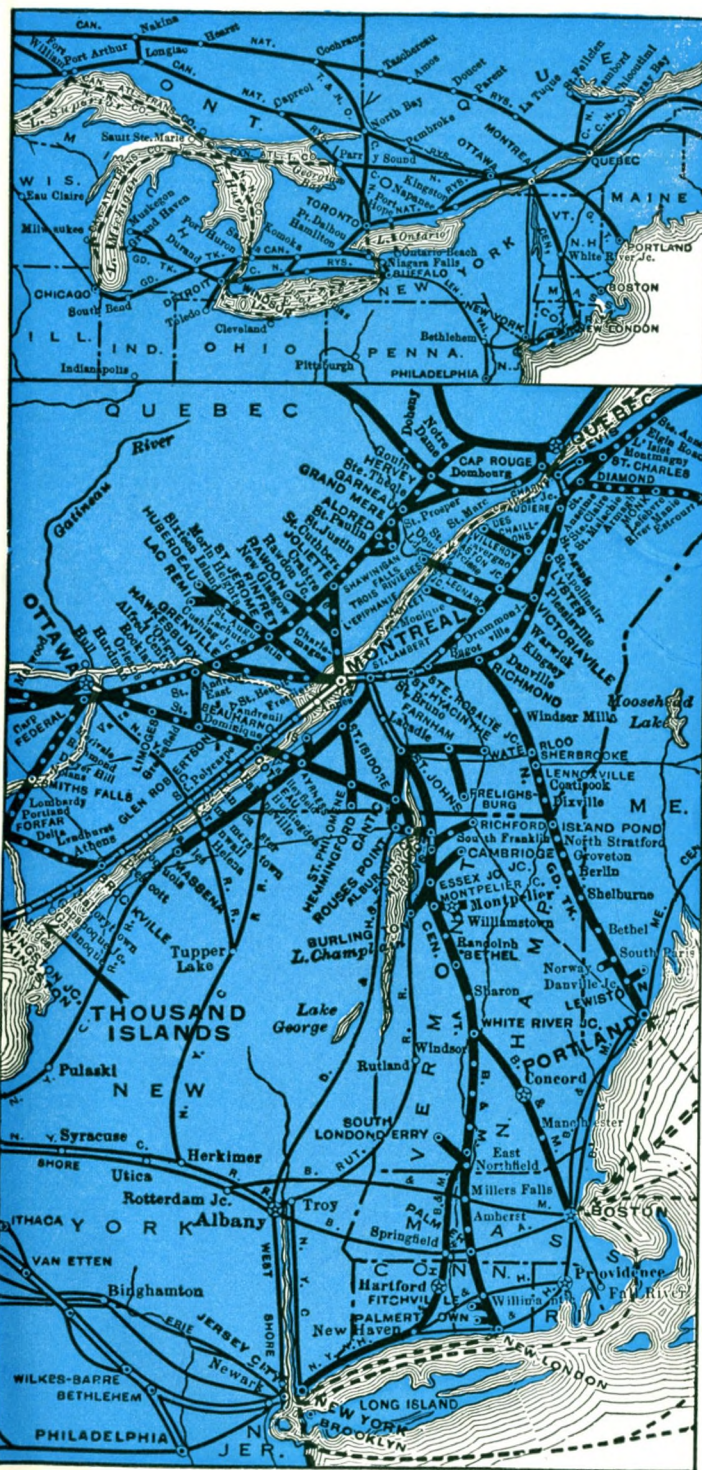
R. W. LONG.....	General Freight Traffic Manager.....	Montreal, Que.
G. T. PETTIGREW.....	Asst. Gen. Freight Traffic Manager.....	Montreal, Que.
L. MACDONALD.....	Freight Traffic Manager.....	Montreal, Que.
E. F. FLINN.....	Freight Traffic Manager.....	Chicago, Ill., U.S.
W. G. MANDERS.....	Freight Traffic Manager.....	Winnipeg, Man.
M. F. TOMPKINS.....	Traffic Manager.....	Moncton, N.B.
R. E. PERRY.....	Asst. Freight Traffic Manager.....	Toronto, Ont.
R. J. FOREMAN.....	Traffic Manager, Foreign Freight Dept.....	Montreal, Que.

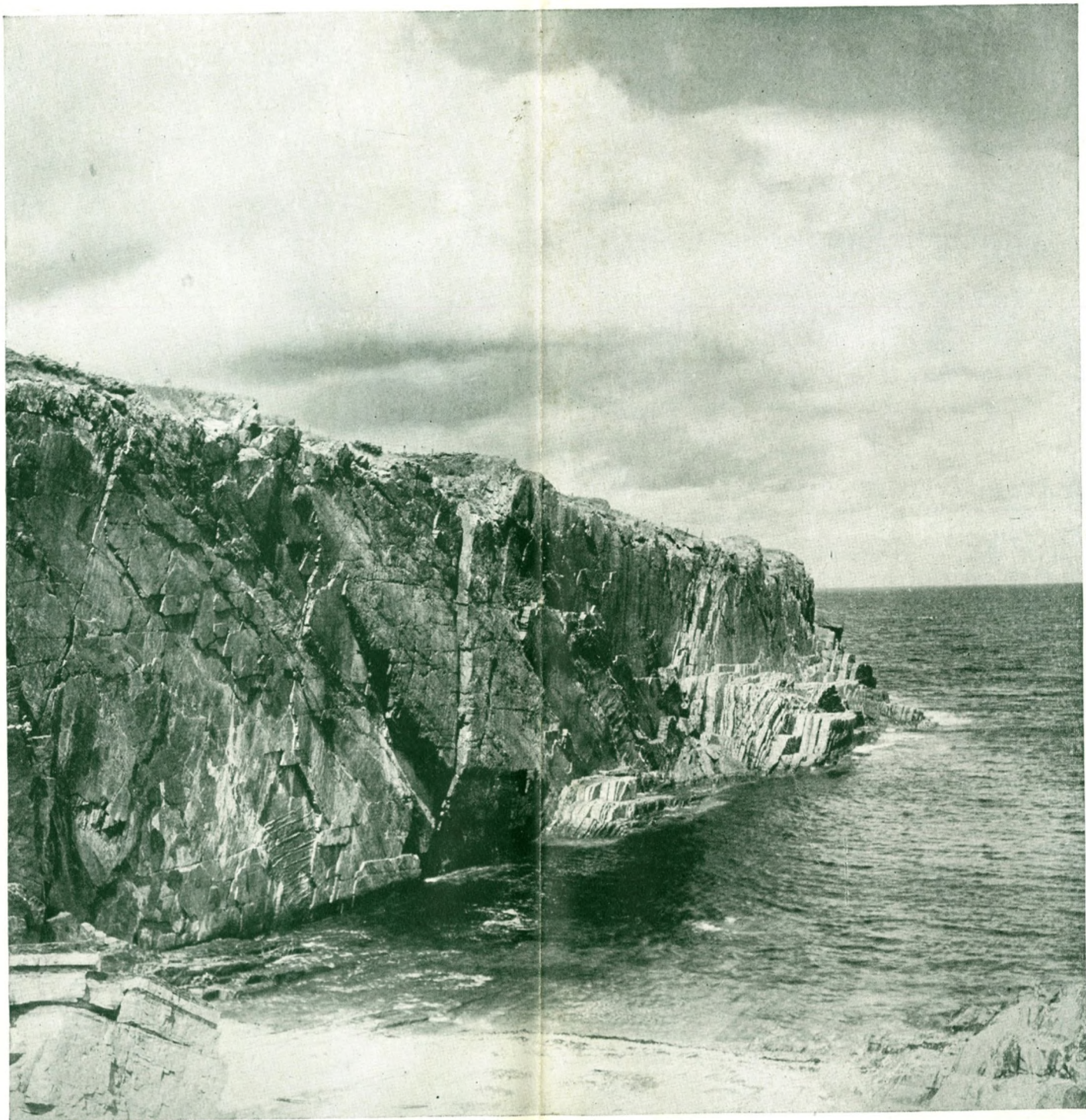
PASSENGER AGENCIES

Canada and United States

Belleville, Ont.....	H. C. Thompson.....	243 Front St.
Boston, Mass.....	T. E. P. Pringle.....	186 Tremont St. (Masonic Bldg.)
Brantford, Ont.....	J. T. O'Neill.....	153 Colborne St.
Brockville, Ont.....	M. C. Dunn.....	Cor. King and East Market Sts.
Buffalo, N.Y.....	H. M. Morgan.....	420 Main St., Liberty Bank Bldg.
Calgary, Alta.....	J. H. Norton.....	218 Eighth Ave. West
Charlottetown, P.E.I.....	P. W. Clarkin.....	C. N. Rys. Station
Chicago, Ill.....	C. G. Orttmberger.....	4 South Michigan Ave., cor. Madison, Willoughby Tower Bldg.
Cincinnati, Ohio.....	E. C. Kennedy.....	Dixie Terminal Bldg., 49 E. Fourth St.
Cleveland, Ohio.....	H. G. Pentland.....	Union Trust Bldg., 925 Euclid Ave.
Detroit, Mich.....	J. H. L. McCaughy.....	1523 Washington Blvd., Hotel Statler Bldg.
Duluth, Minn.....	L. F. Lorentz.....	3044 West Grand Blvd.
Edmonton, Alta.....	W. E. G. Bishop.....	430 West Superior St.
Grand Rapids, Mich.....	J. Madill.....	Cor. Jasper and 100th Sts.
Guelph, Ont.....	C. A. Justin.....	G. T. Ry. Station
Haliifax, N.S.....	B. A. Rose.....	11 and 13 Wyndham St.
Hamilton, Ont.....	J. J. Leydon.....	Cor. Barrington and George Sts.
Kansas City, Mo.....	Jas. Anderson.....	7 James St. North
Kingston, Ont.....	W. H. Happ.....	705 Walnut St.
London, Ont.....	V. C. Hanley.....	Cor. Johnston and Ontario Sts.
Los Angeles, Cal.....	R. E. Ruse.....	406 Richmond St.
Los Angeles, Cal.....	H. R. Bullen.....	607 South Grand Ave.
Minneapolis, Minn.....	G. A. North.....	518 Second Ave., South
Montreal, Que.....	M. O. Dafoe.....	384 St. James St.
Moose Jaw, Sask.....	E. A. Robertson.....	Cor. Main and Cordova Sts., Grant Hall Hotel
New York, N.Y.....	F. A. Young.....	505 Fifth Ave.
New York, N.Y.....	C. E. Jenney.....	505 Fifth Ave.
North Bay, Ont.....	C. W. Murphy.....	81 Main St.
Oshawa, Ont.....	D. C. Forrester.....	3 King St. West
Ottawa, Ont.....	J. P. M. Buttler.....	93 Sparks St.
Ottawa, Ont.....	Travel Information Bureau.....	Chateau Laurier
Peterboro, Ont.....	J. B. Doran.....	324 George St.
Philadelphia, Pa.....	M. J. Woods.....	1422 Chestnut St., Burlington Arcade
Pittsburgh, Pa.....	W. J. Burr.....	505 Park Bldg., 355 Fifth Ave.
Portland, Me.....	G. A. Harrison.....	G. T. Railway Station
Portland, Ore.....	A. B. Holtorp.....	302 Yamhill St., Pacific Bldg.
Prince Rupert, B.C.....	R. F. McNaughton.....	528 Third Ave.
Quebec, Que.....	J. A. Bibeault.....	10 Ste. Anne St.
Quebec, Que.....	J. J. Aubin.....	234 St. Joseph St., St. Roch
Regina, Sask.....	E. G. Wickerson.....	1874 Scarth St.
San Francisco, Cal.....	W. J. Gilkerson.....	689 Market St.
Saskatoon, Sask.....	Wm. Stapleton.....	103 Second Ave. South
Seattle, Wash.....	J. F. McGuire.....	1329 Fourth Ave.
Sherbrooke, Que.....	A. M. Stevens.....	23 Wellington St. North
St. Catharines, Ont.....	C. J. Harris.....	106 St. Paul St.
Saint John, N.B.....	L. C. Lynds.....	49 King St.
St. John's, Nfld.....	A. Green.....	Board of Trade Bldg., 155 Water St. East
St. Louis, Mo.....	W. E. Rudolph.....	314 North Broadway
St. Paul, Minn.....	A. H. Davis.....	83 East Fifth St.
Sudbury, Ont.....	A. G. Bell.....	26 Elm St. West
Toronto, Ont.....	R. E. Richmond.....	N.W. Cor. King and Yonge Sts.
Vancouver, B.C.....	K. E. McLeod.....	527 Granville St.
Victoria, B.C.....	C. F. Earle.....	911 Government St.
Washington, D.C.....	G. L. Bryson.....	901-15th St. Northwest
Windsor, Ont.....	G. E. Walker.....	361 Ouellette Ave.
Winnipeg, Man.....	F. J. Creighton.....	Cor. Main St. and Portage Ave.
Woodstock, Ont.....	N. A. B. Smith.....	408 Dundas St.

MAP OF CANADIAN NATIONAL RAILWAYS AND CONNECTIONS SERVING THE NEW ENGLAND STATES





BOLD HEAD CLIFF, NEAR YORK