

JASPER

NATIONAL PARK

CANADIAN ROCKIES



CANADIAN NATIONAL
LARGEST RAILWAY SYSTEM IN AMERICA



JASPER PARK LODGE



IN THE
HEART OF
JASPER
NATIONAL
PARK
CANADIAN
ROCKIES

CANADIAN NATIONAL RAILWAYS



JASPER PARK LODGE

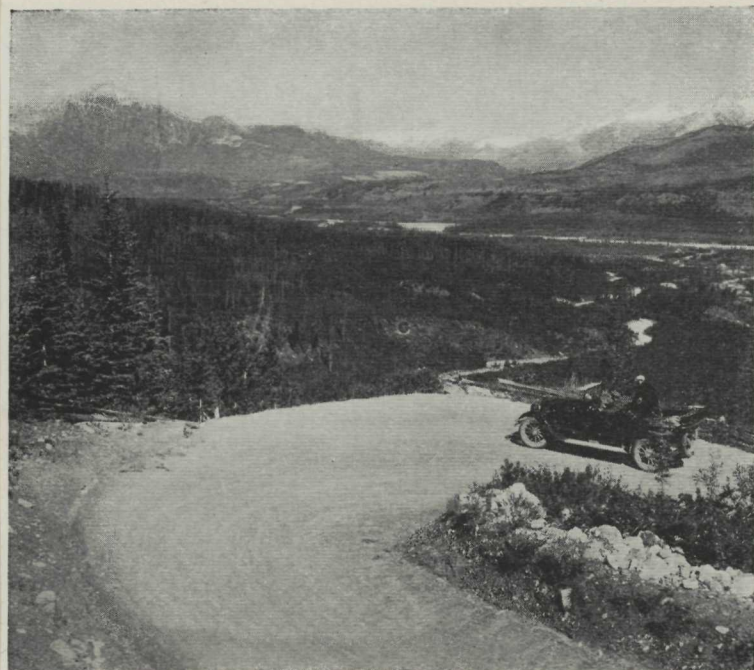
JASPER NATIONAL PARK

OF all the national playgrounds in the world—and they are many—Jasper National Park, Alberta, in the heart of Canada's Rocky Mountains, is the largest. The area within its boundaries, enlarged during 1927, exceeds 5,000 square miles and in it are to be found, with the exception of geysers, all and more than any other national playground in North America has to offer.

Because of its tremendous size, its location in an area of great beauty, the development which has occurred within that portion closest to the lines of the Canadian National Railways, and its comparative detachment from the outer world—there are no motor roads leading into or out of the park—Jasper is able to meet adequately those requirements which holiday seekers are demanding of the territories recommended to them. In all truthfulness, here it may be said is a great range of country unspoiled by man; mountains, rivers, lakes and forests untouched, existing as they were created. What alterations man has wrought are simple and few, not interfering with the natural beauty of the park and designed solely that visitors may see, appreciate and enjoy it to the full in the limited time the average holiday permits.

There is only one centre of population within the park. This is the Town of Jasper where the traveller detrains. It has about 1,000 inhabitants, most of whom are engaged in railroad work, this being a divisional headquarters, or in the administration of park affairs, the headquarters of the park being located here. There is also a mounted police barracks where a detachment of the famous "Crimson Riders" of the Canadian Northwest is stationed.

JASPER PARK LODGE



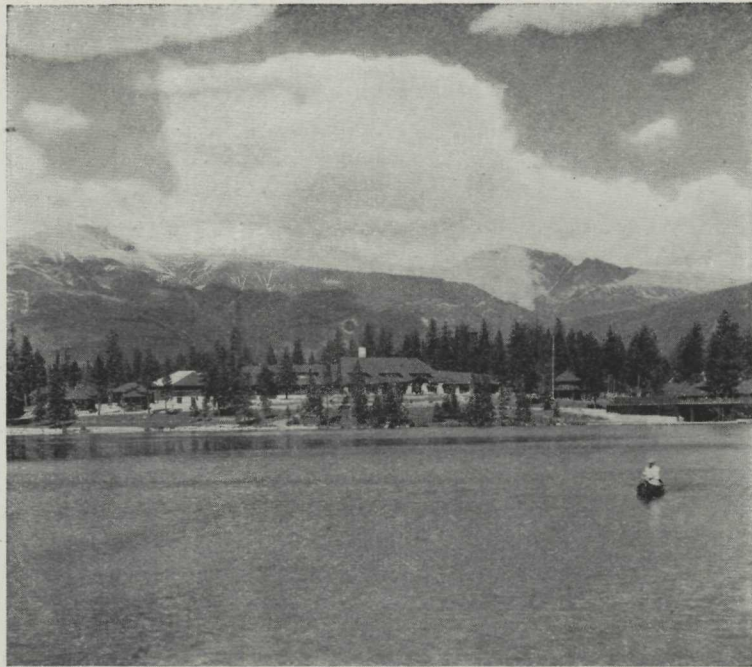
Motoring to Mount Edith Cavell—Panoramic view of Athabaska Valley.

Three miles from the station, and connected to it by a paved motor road, is Jasper Park Lodge, a summer hotel of the Canadian National Railways. Words are almost futile to describe this picturesque summer resort whose beauty and hospitality have in less than five years attained such a degree of popularity that from an unpretentious beginning it has been necessary to increase the size of the hotel to accommodate more than five hundred people. Additional accommodation is planned.

In general, the hotel consists of a number of bungalows radiating from a central lodge in which are located the various public rooms as well as a limited number of bed rooms. These bungalows vary in size. Some accommodate a family of four, some have sixteen rooms. Every bed room is equipped with hot and cold running water, electric light and telephone. A majority of the rooms also have private baths attached. The bungalows have a sitting and writing room and a verandah. Each faces towards Lac Beauvert, a beautiful mountain lake upon the shore of which the hotel rests.

IN THE HEART OF THE CANADIAN ROCKIES

JASPER PARK LODGE



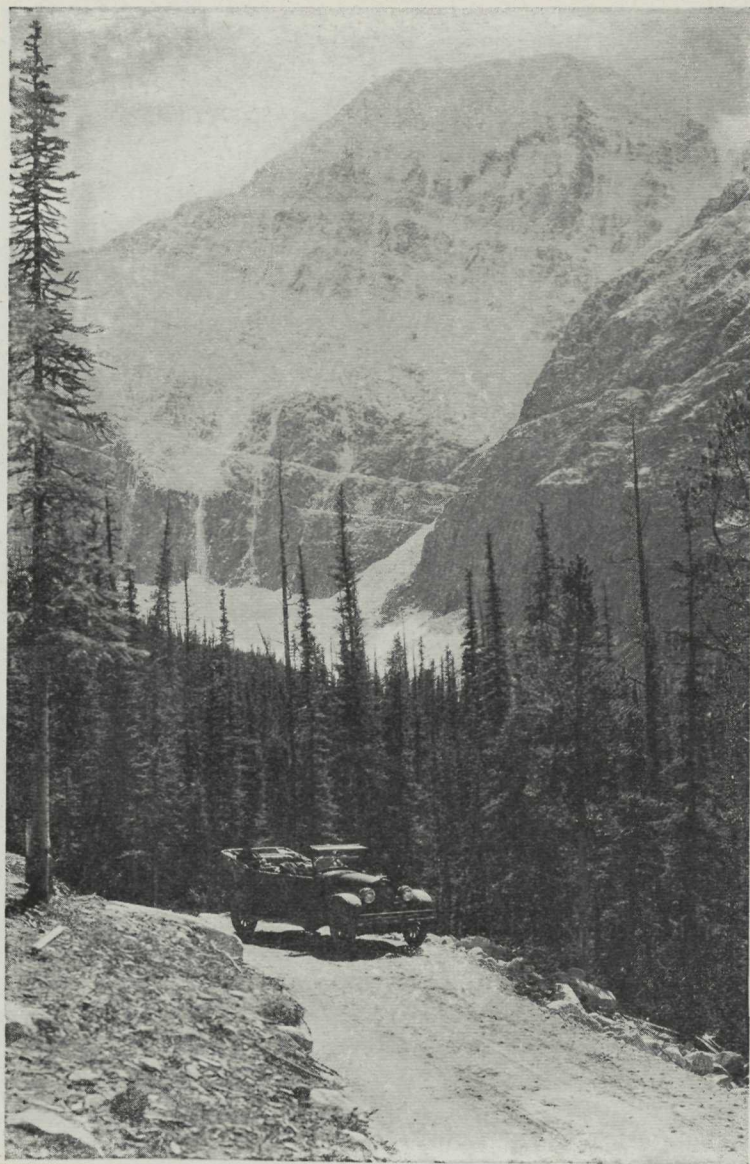
Jasper Park Lodge on beautiful Lac Beauvert.

The main lodge, the largest log building in the world, contains the lounge, the ball room, the dining room, the office and other public rooms of the hotel. The lounge is spacious, tastefully decorated and in the centre of it is a two-faced stone fireplace where full-length logs are burned. The ball room where three hundred people can dance comfortably joins the lounge as does the dining room which has accommodation for more than four hundred people at a sitting.

Into the construction of the main building and the bungalows has been brought to bear all the ingenuity of skilled architects and engineers. The walls have been built of logs and stone gathered from the mountain sides, the wood stained a natural brown, the stones a natural glistening white. The roofs of all the buildings are green so that the whole effect is one of harmony with the natural peace and beauty of the surroundings. Gnarled and warped woods have been cleverly used for decorative effect in the building of the interior of the main lodge and the verandah supports of the bungalows and this feature is one of general delight and admiration. The floors are all hard-wood and the whole atmosphere one of quiet luxury.

IN THE HEART OF THE CANADIAN ROCKIES

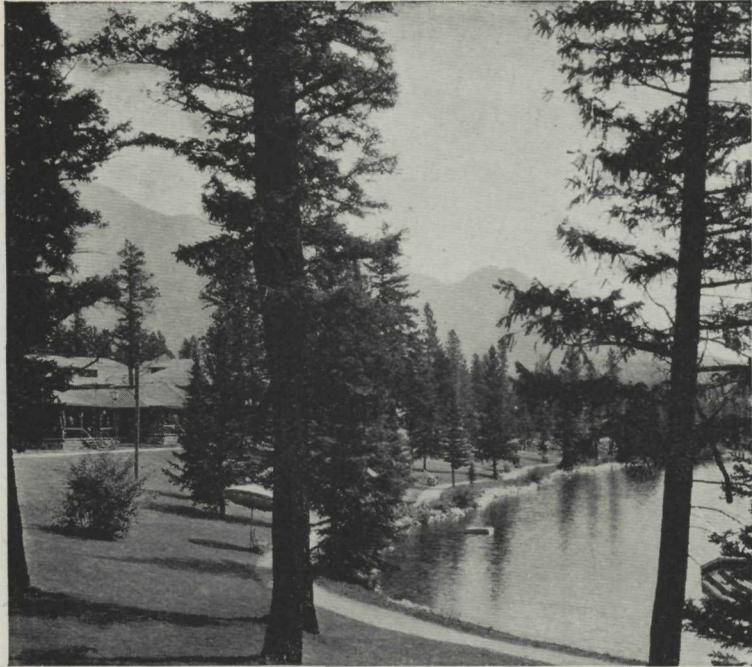
JASPER PARK LODGE



Mount Edith Cavell (altitude 11,033 feet)—*The Queen of the Rockies.*

IN THE HEART OF THE CANADIAN ROCKIES

JASPER PARK LODGE



Another glimpse of Lac Beauvert.

On all sides of Jasper Park Lodge great mountains bulk against the sky. Behind it rises the Colin Range, grey, gaunt and knife-like at the crest. To the right, in contrast, Pyramid Mountain stands on guard above the Athabaska Valley, a bulwark of color whose reds and browns challenge those of the sunset. Further to the right, the friendly Whistlers, tree-covered almost to the top, fling themselves across one whole side of the valley to end beside Mount Edith Cavell, the Queen of the Rockies. This majestic peak, crowned with silver snow year in, year out, rises in regal splendor more than 11,000 feet above the sea, commanding the valley from end to end. To the breast of this mountain there clings a great glacier, the Glacier of the Angels, so called because to the eye it looks like the outspread wing of an angel hovering in mid-air between the crest and the base. To the left loom Kerkeslin, snow-capped and terraced like the mountain in a Japanese print; Tekarra with its fortress-like abutment and Signal, from whose heights in days gone by, the lonely traders signalled the advance of voyageurs up the valley on their way from the sea.

IN THE HEART OF THE CANADIAN ROCKIES

JASPER PARK LODGE



The Lounge.

Immediately in front of the Lodge lies Lac Beauvert, whose waters on a cloudy day change color as an opal, and, when the air is still and clear, provide a perfect mirror wherein is reflected all the grandeur of the encircling hills.

The facilities for enjoying oneself at Jasper are many and varied. In the rear of the main lodge are situated championship tennis courts. Directly in front, on the lake shore, is an open-air heated swimming pool with a wading end for children. A qualified instructor in diving and swimming is always on duty. Boating and canoeing may be enjoyed on the lake, and exercise made doubly attractive as one has an opportunity to study the habits of the beaver that have built their lodges on the shore.

Within one hundred yards of the main lodge is located the club house and first tee of the famous Jasper Park Lodge Golf Course, acclaimed by experts as the most perfect golf course in the world. There are 18 holes, a shot for every club in the bag and a natural setting that is incomparable.

IN THE HEART OF THE CANADIAN ROCKIES

JASPER PARK LODGE

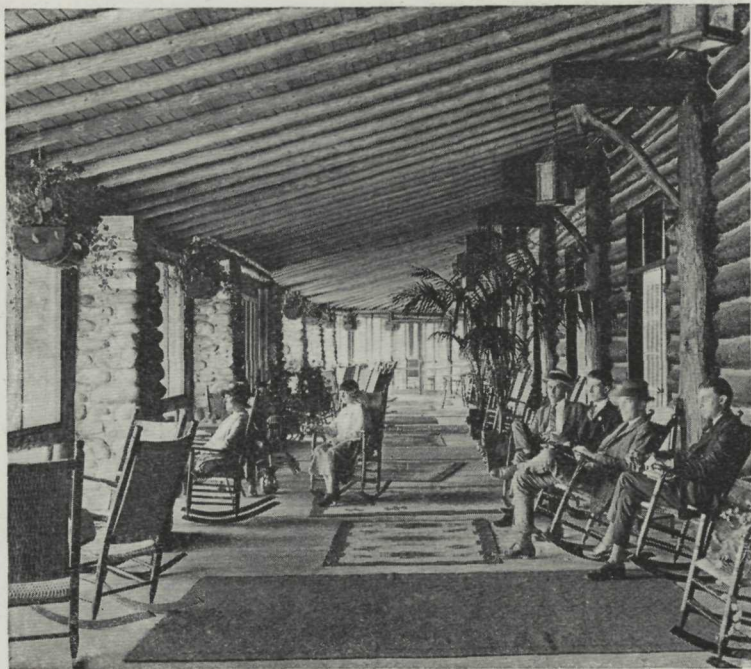


The Dining Room.

From the Lodge splendid motor roads radiate to various points of interest in the heart of the park. One of these spirals from the floor of the Athabaska Valley to the foot of the Glacier of the Angels on Mount Edith Cavell. A second swings through Jasper Town to Patricia and Pyramid Lakes, two emerald tarns nestling at the foot of Pyramid Mountain. A third winds upward to Maligne Canyon, a great gash in the surface of the earth into which the Maligne River tumbles headlong to lose itself. This road continues along the base of the Colin Range to Medicine Lake and eventually will be extended to Maligne Lake, the largest glacial-fed lake in the Rockies and one of the most wonderful spots this side of Paradise. A fourth follows the swirling Athabaska River through the valley to Pochontas. This last is a splendid drive for the camerist as along the way deer, bear and mountain sheep are to be seen close enough to be photographed. Altogether these motor roads total about one hundred miles.

IN THE HEART OF THE CANADIAN ROCKIES

J A S P E R P A R K L O D G E



The broad verandah of the Lodge.

For those who are interested in mountain climbing, expert Swiss guides are available at the Lodge. There are short and easy climbs; long and hard climbs, both without number and to the natural zest of this "Sport" (quoted with malice aforethought) there is the added allurements of making a first climb as there are hundreds of unclimbed and unnamed peaks in the park.

Trail riding is another popular pastime. Nor is it as hard as it sounds. The horses have been selected for their ability to tread the mountain trails, ford streams, pick their path around boulders and over deadfalls and not for their speed or their good looks.

The trails are delightful. They run their wanton way hither and thither, now in the valley beside the streams and lakes; now through the sweet scented woods; now on the wind-swept uplands where the most gorgeous fields of flowers bloom at the very foot of the snows. But wherever they go, high or low, they are by-ways of unending charm of never-failing delight. To tell the story of all of them would be to attempt the

IN THE HEART OF THE CANADIAN ROCKIES

JASPER PARK LODGE



The rustic bungalows are steam heated.

impossible. It is sufficient to say that the trail ride can be two hours or two months, but that along the way there will always be something new to see, something of the real values of life to enjoy.

That does not describe Jasper, for the story of Jasper is one that neither the pen nor the brush can tell. It is a story for the hearts of those who love the world as Nature made it and remain content to let that story rest in the pages of memory.

SUGGESTIONS FOR ONE-DAY GUESTS AT JASPER PARK LODGE

NOTE—Get full particulars on any of these suggestions at Local Transportation Desk. For motor drives and saddle trips, see following pages.

Morning Motor Drive No. 3, (Pyramid and Patricia Lakes), or Short Saddle Trip No. 7, (Maligne Canyon) or Hiking Trip to "Old Fort Point," or Tennis, Golf, Boating, Bathing.

IN THE HEART OF THE CANADIAN ROCKIES

J A S P E R P A R K L O D G E



Near the Lodge where the trail riders foregather.

- Afternoon* Motor Drive No. 2, (Mount Edith Cavell), or Motor Drive No. 4, (Pocohontas Drive), or Short Saddle Trip No. 8, (Miette Ride), or Tennis, Hiking, Golf, Boating, Bathing.
- All Day* *Motor and Saddle Trip No. 12, (Buffalo Prairie), or *Saddle Trip No. 9, (Signal Mountain), or No. 10, (Whistlers Mountain), or No. 11 (Caledonia Lake).
- Evening* Canoeing, Dancing, Motion Pictures.

**Guides necessary for these trips. Arrangements made for trips and guides at Local Transportation Desk.*

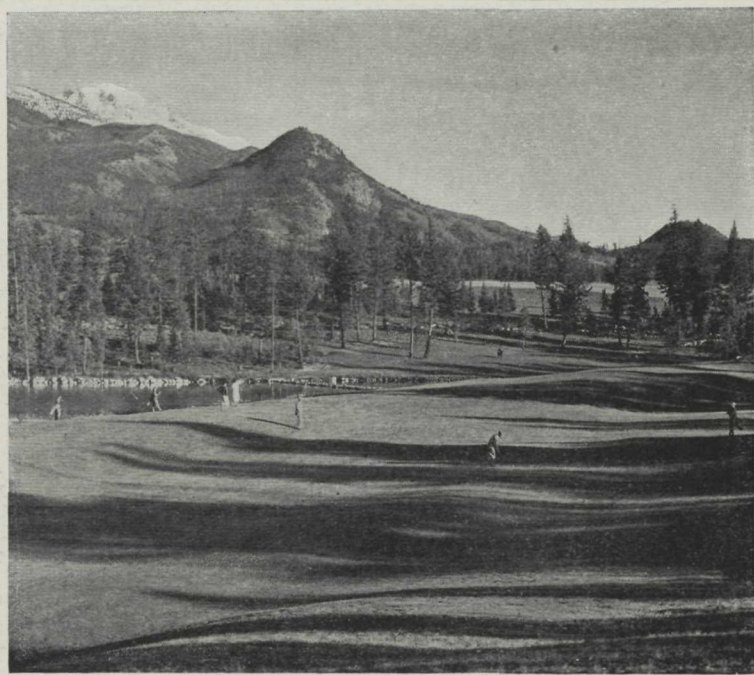
SUGGESTIONS FOR TWO-DAY GUESTS

First Day

- Morning* Motor Drive No. 3, (Pyramid and Patricia Lakes), or Short Saddle Trip No. 6, (Maligne Canyon), or Hiking Trip to "Old Fort Point," or Golf, Tennis, Boating, Bathing, etc.

IN THE HEART OF THE CANADIAN ROCKIES

J A S P E R P A R K L O D G E



A vast amphitheatre of mountain ranges and snow-capped

Afternoon Motor Drive No. 2, (Mount Edith Cavell), or No. 4, (Pocohontas Drive), or Short Saddle Trip No. 5, (Maligne and Athabaska Rivers), No. 7, (Buffalo Prairie, Old Fort Point), or No. 8, (Miette Ride).

All Day Saddle Trip No. 9, (Signal Mountain), or No. 10, (Whistlers Mountain), or Motor and Saddle Trip No. 12, (Buffalo Prairie).

Second Day

Morning Short Saddle Trip No. 8, (Miette Ride), or Hiking, Golf, Tennis, Boating, Bathing, etc.

Afternoon Motor Drive No. 4, (Pocohontas Drive), or Saddle Trip No. 5, (Maligne and Athabaska Rivers), No. 6, (Maligne Canyon), No. 7, (Buffalo Prairie and Old Fort Point), or No. 8, Miette Ride.

Two Days Saddle and Camping Trip No. 14, (Athabaska Falls), or Saddle and Camping Trip No. 15, (Jacques Lake), or Motor

I N T H E H E A R T O F T H E C A N A D I A N R O C K I E S

J A S P E R P A R K L O D G E



peaks surround a golf course that has few equals.

and Saddle Trip No. 16, (Medicine Lake, Maligne Lake, Shovel Pass).

SUGGESTIONS FOR THREE-DAY GUESTS

First Day See Suggestions for Two-Day Guests.

Second Day See Suggestions for Two-Day Guests.

Third Day Saddle, Camping and Fishing Trip No. 17, (Tonquin Valley and Amethyst Lake), or Saddle and Camping Trip No. 15, (Jacques Lake), or No. 13, (Medicine Lake).

SUGGESTIONS FOR FOUR-DAY GUESTS

Any of the previous Suggestions, to One, Two or Three day visitors, or Saddle and Camping Trip No. 17, (Medicine Lake, Maligne Lake and Shovel Pass), or Trip No. 18, (Tonquin Valley, Amethyst Lake via Portal Creek).

IN THE HEART OF THE CANADIAN ROCKIES

JASPER PARK LODGE



Jasper is destined to be one of the great golf resorts of the world.

Saddle and camping trips anywhere in the vast Park and for any duration of time or distance may be arranged at the Local Transportation Desk, also information may be secured regarding big game hunting outside the Park. Generally speaking the longer saddle trip can be planned with greater advantage as individual comforts and tastes can be better consulted.

MOTOR AND SADDLE SIGHT-SEEING TRIPS FROM JASPER PARK LODGE

NOTE—For all motor and saddle trips, arrangements can be made at the Local Transportation Desk in the lobby at the Lodge.

DAILY MOTOR TRIPS

MOTOR TRIP No. 1: Maligne Canyon—Twelve miles return. This canyon is a natural phenomenon which ranks among the most extraordinary and interesting within Jasper National Park. The route lies over a gradually ascending and winding roadway from which the tourist obtains

IN THE HEART OF THE CANADIAN ROCKIES

JASPER PARK LODGE



September 8th to 15th, 1928, is Jasper Golf Week.

magnificent views of lordly mountains and charming vistas of the Athabaska Valley. Cost per person, \$2.25. At the Canyon, light lunch and refreshments may be had in the Tea House.

MOTOR TRIP No. 2: Glacier of the Angel (Mount Edith Cavell) Drive—Thirty-six miles return. This highway affords good motoring and, by a course of wide-sweeping switchbacks, its altitude increases by nearly 2,000 feet, giving the tourist an ever-changing series of most striking and beautiful panoramas of mountains and valleys unequalled on the continent. Cost per person, \$4.50; minimum, three persons.

MOTOR TRIP No. 3: Pyramid and Patricia Lakes—Fourteen miles return. These are two of the most beautiful lakes near Jasper and lie close to the foot of Pyramid Mountain. The route lies over the Athabaska River, through the town of Jasper. Pyramid Lake is crescent-shaped; its area about three hundred acres. Lake Patricia, less than half the size of Pyramid, is long and narrow. Cost per person, \$2.75.

IN THE HEART OF THE CANADIAN ROCKIES

JASPER PARK LODGE



Trail riders have a magnificent view of the Athabaska Valley.

MOTOR TRIP No. 4: Pocohontas Drive. It follows the completed section of the new Interprovincial Highway. Near the turn at the end of the drive may be viewed Punch Bowl Falls and Valley. The Pocohontas Drive affords a very wide variety of mountain scenery. No appreciable rise occurs in the elevation, so that always the mountains tower majestically overhead, and by their nearness take on a seeming intimacy. These drives offer excellent opportunity for the nature lover and student to record new specimens of animal and plant life. Cost per person, \$7.00; minimum, three persons.

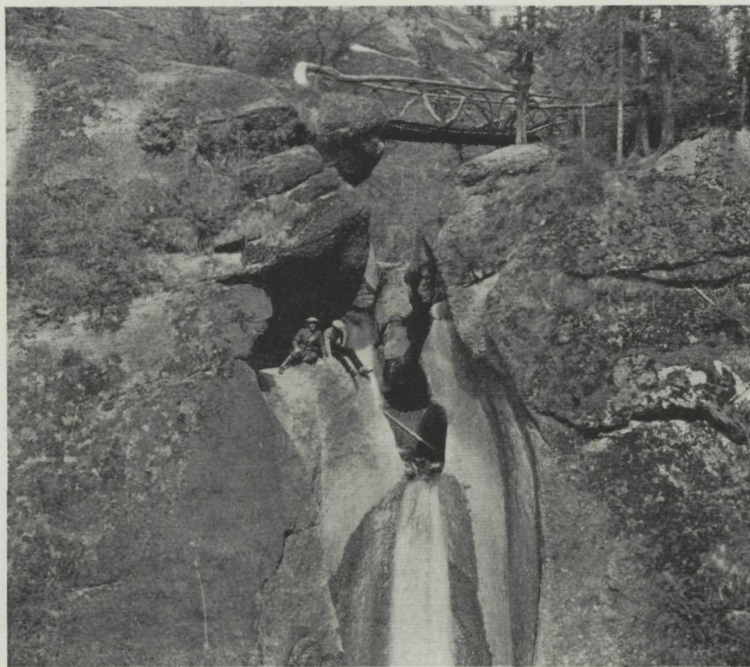
SHORT SADDLE TRIPS

No. 5: To confluence of Maligne and Athabaska Rivers, over the famous Athabaska trail, is a wonderful scenic trip. Approximately eight miles return. Time—three hours. Price \$3.00 per person.

No. 6: Maligne Canyon. This is a daily trip leaving the Lodge at 9.30 a.m., over the back trails, away from the motor road, through walls

IN THE HEART OF THE CANADIAN ROCKIES

J A S P E R P A R K L O D G E



The Malign Canyon.

of spruce and pine, open spaces affording wonderful views, a beautiful and easy ride. Ten miles return. Time!—three hours. For a minimum of five riders, the rate of \$3.00 per person includes the guide. When less than five riders, there will be an extra charge for the guide.

No. 7: Golf Course, Buffalo Prairie and Old Fort Point (Hudson's Bay Table Top). This is a schedule trip, leaving the Lodge daily at 2.00 o'clock, skirting the greater part of the new golf course, proceeding up the Buffalo Prairie trail through Hell's Gate to the top of the ridge and out on to Old Fort Point, affording a splendid view of the valley, the Lodge, Mount Cavell and the mountains on either side of the upper river.

This vantage point commands a superb panoramic view of the greatest scenic golf course in America. Distance, seven miles. Time, two and one-half hours. Price, \$3.00 per person. Extra charge for guide when party consists of less than five riders.

No. 8: The Miette Ride. One of the most delightful short and easy rides, bringing tourists through the village of Jasper on the return trip.

IN THE HEART OF THE CANADIAN ROCKIES

J A S P E R P A R K L O D G E



Directly in front of the Lodge is an open-air heated swimming pool with a wading end for the children.

Ten miles return. Time, about four hours. Price, \$3.00 per person. Extra charge for guide when party of less than five riders.

ONE-DAY SADDLE TRIPS

SADDLE TRIP NO. 9: Signal Mountain. Sixteen miles return. One of the most delightful rides is to the top of Signal Mountain (altitude 8,200 feet). The view from this altitude is stupendous, embracing the Athabaska Valley and the Yellowhead Pass. Cost, \$6.00 for saddle horse.

NOTE—The management recommends that no mountain saddle trip be made without the services of a guide. Cost of a guide is \$7.00 per day, \$4.00 half day. Guides' charges are materially reduced per person according to the size of the party. Personal effects limited to 20 pounds per person for camping trips, and complete equipment does not include personal accessories such as towels, soap, etc. One dollar per week, per pair, will be charged for blankets.

IN THE HEART OF THE CANADIAN ROCKIES

JASPER PARK LODGE



The Championship Tennis Courts at Jasper are free to guests of Jasper Park Lodge

SADDLE TRIP NO. 10: Whistlers Mountain. Eighteen miles return. This is another wonderful trip. A good trail. This mountain is situated just above the junction of the Miette River with the Athabaska River. Cost, \$5.00 for saddle horse.

SADDLE TRIP NO. 11: Caledonia Lake. Fourteen miles return. A small lake lying on a rocky bench above the Miette River, west of Jasper, reached by passing through the village and following the Miette road to the Cabin Creek bridge. Here the trail to Caledonia Lake branches off to the right and goes up the left bank of Cabin Creek. This is one of the most pleasant rides in the Park. Cost \$4.00 for saddle horse.

SADDLE TRIP NO. 12: Buffalo Prairie—Wabasso Lake. Twenty miles return. This is a good trail and the scenery is wonderful. Here also there is excellent fishing. Cost of saddle horse, \$5.00. Guide extra.

IN THE HEART OF THE CANADIAN ROCKIES

J A S P E R P A R K L O D G E



At Maligne Lake there is lodge accommodation.

TWO-DAY SADDLE AND CAMPING TRIPS

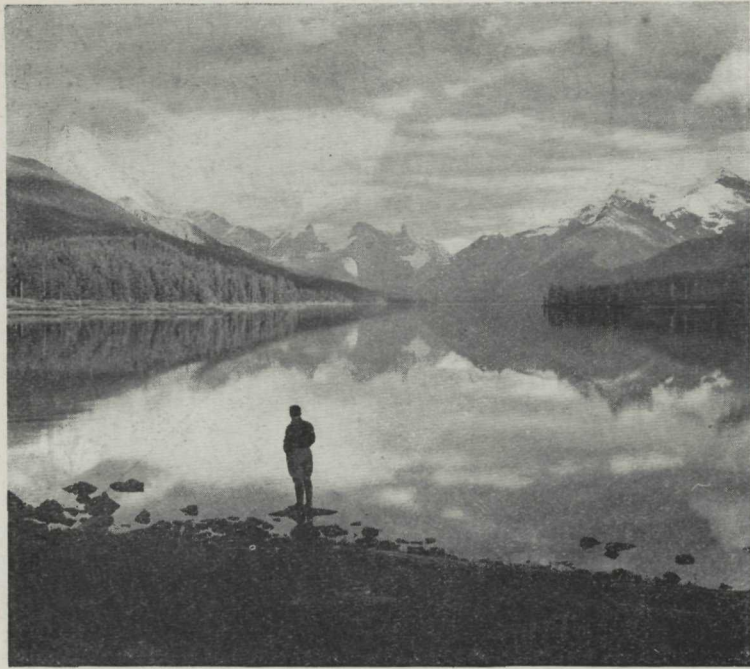
NOTE — No half days in saddle and camping trips. Reservations for scheduled camping trips must be made at least 24 hours in advance, also 24 hours' notice of cancellation must be given.

SADDLE TRIP No. 13: Medicine Lake. Distance is thirty-four miles return. The trail leading to this interesting lake is a continuation of the Maligne Canyon driveway. Medicine Lake, with a length of four and a half miles and a width of nearly a mile, is delightfully situated in Maligne Valley, amid towering mountains, whose peaks are mirrored in its placid surface. Cost, including complete camping equipment, guide, horses, food, etc., one person, \$20.00 per day; two to five persons, \$15.00 per day each; more than five persons, special rates will be arranged.

SADDLE TRIP No. 14: Athabaska Falls. Distance of forty-one miles return. Situated at the foot of Mount Kerkeslin, Athabaska Falls present a wondrously glorious sight as they come tumbling into the canyon. In the

IN THE HEART OF THE CANADIAN ROCKIES

JASPER PARK LODGE



Maligne Lake—one of the most wonderful spots this side of Paradise.

vicinity mountain goat are plentiful and black, cinnamon and grizzly bear may be found. There is also excellent fishing in Hardisty Creek at the foot of Mount Hardisty in this vicinity. Cost, including everything, one person, \$20.00 per day; two to five persons, \$15.00 per day; more than five persons, special rates. Minimum, three persons.

THREE-DAY SADDLE AND CAMPING TRIPS

SADDLE TRIP NO. 15: To Jacques Lake. "A real fishing trip." Jacques Lake is a small body of water delightfully situated between the Maligne and Rocky Rivers, and is about twenty-seven miles from Jasper Park Lodge. It is noted for its excellent trout fishing—probably the best in the Park. Price \$20.00 per day, per person; two to five persons, \$15.00 per day; more than five persons, special rates will be arranged.

IN THE HEART OF THE CANADIAN ROCKIES

JASPER PARK LODGE



Alpine climbing with Swiss Guides in the Canadian Rockies.

OF THE ALMOST BEWILDERING ARRAY OF WONDERFUL PLACES IN JASPER NATIONAL PARK MALIGNE LAKE AFFORDS MUCH THAT IS INTERESTING AND STRIKING TO TOURISTS WHO PROFESS APPRECIATION FOR SUCH THINGS

FOUR-DAY SADDLE AND CAMPING TRIPS

SADDLE TRIP No. 16: Maligne Chalet, commanding a full view of Maligne Lake, is situated on a low plateau at the outlet. Before the Chalet and extending in a southeasterly direction for seventeen miles, with a breadth varying from two hundred yards to two miles and possessing some fifty miles of shore line, lies the largest glacial fed lake in the Canadian Rockies.

Beginning with Mount Samson, the jagged peak ten thousand feet high facing the Chalet on the left, the altitude of the peaks forming the Maligne group, which includes Mounts Charlton, Unwin, Warren, Mary Vaux and Maligne, increases until, in Mount Brazeau, a height

IN THE HEART OF THE CANADIAN ROCKIES

JASPER PARK LODGE



A stiff climb.

of twelve thousand two hundred and fifty feet is reached — one thousand feet higher than Mount Edith Cavell and approaching the height of Mount Robson itself.

The mountains rise precipitously from the lake and are heavily laden with snow and ice. At the southwest end of the lake, farthest from the Chalet, lies a considerable snowfield and leading in a southerly direction towards the Brazeau River district is a high, though broad snowpass, along the western base of Mount Brazeau and affording an easy way of access to this very interesting neighborhood. The nature of mountains in the Maligne Lake district, affords abundant opportunity for both ice and rock climbing and is within easy reach of the Chalet by motorboat, horseback or on foot and many comparatively easy climbs may be carried out by the amateur.

The mountains, meadow and flowers of the alplands lying to the west within easy reach from the Chalet, will prove of interest to botanist and naturalist alike. Sheep, goat, cariboo, moose and deer frequent these

IN THE HEART OF THE CANADIAN ROCKIES

JASPER PARK LODGE



One of the great charms of the Park is the

pastures. The Opal Hills facing the Chalet on the east, provide sheep and goat for the observation of the visitor, while the mountain sides overlooking the lake and particularly those about the southeast are used extensively by the mountain goat as a summer pasture.

ROUTE

The first five miles of the trail lies eastward from Jasper Park Lodge down the Athabaska Valley to the Maligne River, then turning up the Maligne River, along the base of the Colin Range nine miles to Medicine Lake and three and one half miles along the shore of Medicine Lake to Medicine Lake Lodge. From Medicine Lodge stretches ten miles of good trail and easy grades along the east bank of the Maligne River to Maligne Chalet.

Visitors returning by the Shovel Pass route over the Maligne Range, on leaving the Maligne Chalet, proceed up the slope of the mountains to the west of the Chalet and crossing the Alpine meadows, go through

IN THE HEART OF THE CANADIAN ROCKIES

J A S P E R P A R K L O D G E



abundance and fearlessness of its wild life.

Little Shovel Pass and big Shovel Pass to spend the night at Shovel Pass Camp, completing the trip the following day by following the trail down from the Maligne Range, by Signal Mountain, into the Athabaska Valley and return to the Lodge.

CAMPS

Medicine Camp, elevation 4500 feet, situated at the upper southend of Medicine Lake at the point where the river enters the lake, is a peeled log building containing dining-room, sitting-room and limited sleeping accommodation, supported by floored and walled tents containing heaters. Accommodation fifteen.

Side trips to Jacques Lake, good fishing.

MALIGNE CHALET, elevation—5500 feet, situated on Maligne Lake at the outlet of the river comprises a main building or Chalet with a dining-room and sitting-room and a limited number of bedrooms. This building is supported by a second building or sleeping lodge. Accommodation—twenty five.

IN THE HEART OF THE CANADIAN ROCKIES

JASPER PARK LODGE



The Glacier of the Angel—Mount Edith Cavell.

SHOVEL PASS CAMP, elevation—6500 feet, situated in a basin near timber line on the Maligne Range and affording a good view of the surrounding country. In addition to a dining-room the building is composed of well built, floored and walled heated tents which are provided with comfortable spring beds and mattresses.

TRANSPORTATION

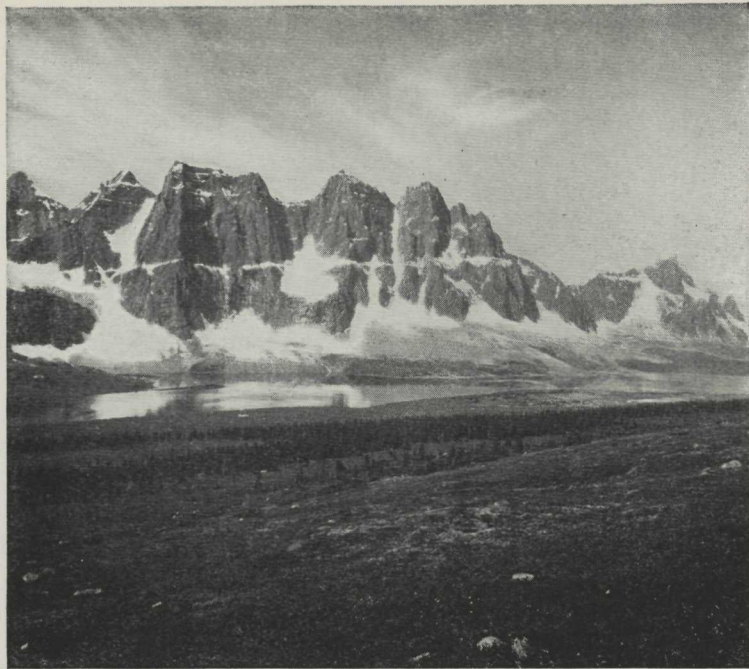
FOUR-DAY SADDLE TRIP. First day, leaving Jasper Park Lodge at nine a.m. and reaching Medicine Lake Camp in mid-afternoon with one hour for trail lunch on the way.

Second day, leaving Medicine Lake Camp at nine a.m. and reaching Maligne Chalet in the early afternoon. Conditions permitting, enough time remains to take a short trip down the lake in the motor boat.

Third day, leaving Maligne Chalet at nine a.m. reaching Shovel Pass Camp at four p.m. after having one hour for trail lunch on the way.

IN THE HEART OF THE CANADIAN ROCKIES

JASPER PARK LODGE



The Ramparts—countless towers, turrets and pinnacles.

Fourth day, leave Shovel Pass Camp at nine a.m. and reach Jasper Park Lodge at three p.m. allowing one hour for lunch. Cost inclusive \$60.00.

TWO-DAY MOTOR AND SADDLE HORSE TRIP. First day, leave Jasper Park Lodge at nine a.m. and motor to Medicine Lake, transfer into Motor boat and reach Medicine Lake Camp for lunch. Leave Medicine Lake Camp with guide and saddle horses and reach Maligne Chalet at five p.m.

Second day, leave Maligne Chalet at nine a.m. with guide and saddle horses, reach Medicine Lake Camp for lunch, transfer into motor boat to lower end of lake and return to the Lodge by motor cars.

The inclusive cost covers transportation described, as well as meals and comfortable accommodation at the camps, which are under the supervision of competent camp managers, but does not include breakfast the morning of departure or dinner the afternoon of return. One person \$50.00. Two persons \$45.00. Three or more \$40.00.

IN THE HEART OF THE CANADIAN ROCKIES

JASPER PARK LODGE



The Tonquin Valley.

Motor boat trip to upper end of Maligne Lake and return (thirty-four miles), in conjunction with the two trips mentioned above — cost an additional \$8.00 per person.

SADDLE TRIP No. 17: Tonquin Valley and Amethyst Lake — via New Portal Creek trail to this wonderful scenic country. Tonquin Valley is one of the beauty spots of Jasper National Park.

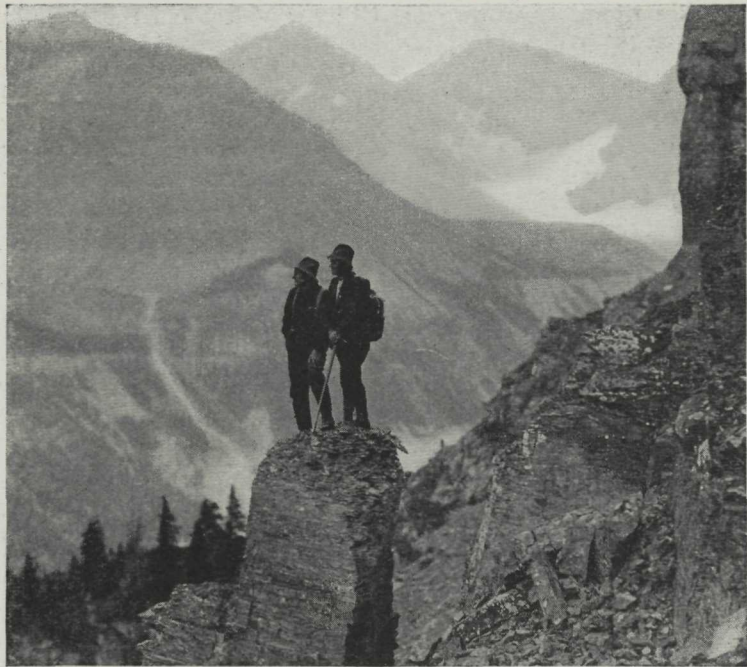
Near the south end of Tonquin Valley, 6,450 feet above sea level and draining into Astoria River, there is a beautiful sheet of water about three miles long and one mile across in the widest place. This is divided into two parts by a rocky peninsula jutting out from the north side. Cost, including complete camping equipment, guides, horses, food, etc., one person, \$20.00 per day; two to five persons, \$15.00 per day each; more than five persons, special rates.

EIGHT-DAY SADDLE AND CAMPING TRIP

SADDLE TRIP No. 18: Columbia Ice Field. Travelling up the valley of the Athabaska River, passing en route the Athabaska and Sun

IN THE HEART OF THE CANADIAN ROCKIES

JASPER PARK LODGE



The Roof of the World—Columbia Ice Field—Jasper National Park.

Wapta Waterfalls, Mts. Kerkeslin, Whirlpool, Fryatt, Christie, and many other splendid mountains, the Columbia Ice Field is reached. One hundred and fifty square miles of ice, majestic peaks and such well-known mountains as Columbia (12,294 feet), Alberta (11,874 feet), Snow Dome (11,340 feet), Wooley (11,170 feet), Diadem (11,060 feet), Stutfield (11,320 feet), and many others may be visited.

This is the largest ice field in the Canadian Rockies and surmounts a triple divide giving rise to streams flowing into the Arctic and Pacific oceans as well as to Hudson Bay. Rates on application at the Transportation Desk.

SADDLE TRIP NO. 19: Jasper National Park to Mount Robson Park. This is a 10 day saddle trip.

Through the Tonquin Valley and Moose Pass to Berg Lake and Mount Robson. Through the Portal Basin by Portal Peak and over Maccarib Pass to camp at the base of Mount Geikie and the Rampart Range in the Tonquin Valley. One day is well spent visiting Barbicon Pass and

IN THE HEART OF THE CANADIAN ROCKIES

J A S P E R P A R K L O D G E

the Geikie Meadows. Down the Clairvox Valley and the Fitzwilliam Shoulder at the base of Mt. Fitzwilliam, across the head waters of Grant Brook and the west fork of the snake Indian River, through Colonel Pass and Moose Pass to Berg Lake Camp and Mount Robson, reaching the railroad at the latter point. A very interesting day may be spent at the Berg Lake Camp visiting the Tumbling Glacier, the main Mt. Robson Glacier, or climbing Mount Mumm to the rear of the camp. This is a camping trip of unusual interest. Cost, including food, guides, horses, etc., for a minimum of three persons, one hundred and fifty (\$150.00) for each person. *The regular trail and camping rates do not apply to this trip.*

IMPORTANT NOTES

The motor and saddle horse trip is contingent on good weather conditions.

Walking or "hiking" parties given special attention.

Every effort, commensurate with trail conditions, will be made to keep to the hours set down in regard to departure and arrival.

No responsibility will be assumed for the loss of valuables or personal equipment.

JASPER PARK LODGE GOLF COURSE

Hole No.	Bogey Course	Regular Course	Championship Course	Par	Name of Hole
1	385	385	385	4	First
2	380	415	450	5	Old Man
3	385	405	425	4	Signal Dip
4	255	265	230	3	Cavell
5	415	420	435	4	Miette
6	345	375	410	4	Whistlers
7	125	155	175	3	Colin's Clout
8	420	425	430	4	Tekarra's Cut
9	170	180	215	3	Cleopatra
	2880	3025	3155	34	Out

IN THE HEART OF THE CANADIAN ROCKIES

J A S P E R P A R K L O D G E

SWIMMING POOL

The new and inviting swimming pool is proving a very popular attraction to Lodge guests. The crystal clear water is filtered and heated and constantly changing. Dressing rooms are equipped with showers. A charge of 25 cents is made; if bathing suits rented, 50 cents.

A competent swimming instructor is in attendance at the pool, and arrangements may be made to take swimming lessons.

HIKING TRIPS OVER TOURS WHERE CAMPS ARE ESTABLISHED

Without Hiking Guides

Maligne Tour, four days, meals and beds included \$20.00

Mount Robson and Berg Lake, three days, meals and beds included \$20.00

Hiking Guides—\$6.00 per day, extra.

The rate of \$6.00 includes meals and bed for the guide on the established Camp Tour only.

Hiking trips to any part of the Park, accompanied by guide, and supported by horses. Rates based on trips of from one to seven days duration, and include food, tents and camp equipment.

Personal baggage allowance twenty pounds per person which will include bedding and such personal effects as are necessary for the trip, but does not include tents which may be furnished by the party if they so desire.

1. One person \$12.00 per day
2. Two persons 16.50 per day
3. Three persons 18.00 per day
4. Four persons 22.50 per day
5. Five persons 25.00 per day
6. Each additional person above five
and up to ten 4.00 per day

Rates quoted for larger parties on application, which will reduce the rate per person per day.

RATES FOR HIKERS—MOUNT ROBSON TERRITORY

At Mount Robson Bungalow Camp

Bed	\$2.50		
Breakfast	.75	Per day	\$ 5.00
Lunch	.75	Per week	32.50
Dinner	1.00	Per month	135.00

At Berg Lake Bungalow Camp

Bed	\$3.00		
Breakfast	1.25	Per day	\$ 7.00
Lunch	1.25	Per week	42.00
Dinner	1.50	Per month	150.00

RATES FOR HIKERS—JASPER NATIONAL PARK TERRITORY

At Maligne Lake Chalet

Bed	\$2.50		
Breakfast	1.25	Per day	\$ 7.50
Lunch	1.75	Per week	42.00
Dinner	2.00	Per month	150.00

At Medicine Lake Camp

Bed	\$2.50		
Breakfast	1.25	Per day	\$ 6.75
Lunch	1.50	Per week	35.00
Dinner	1.50	Per month	135.00

IN THE HEART OF THE CANADIAN ROCKIES

J A S P E R P A R K L O D G E

At Shovel Pass Camp

Bed	\$2.00		
Breakfast	1.25	Per day	\$ 6.25
Lunch	1.50	Per week	35.00
Dinner	1.50	Per month	135.00

Motor Boat service on Maligne Lake 34 miles return \$8.00 per passenger.

MOTOR CARS AND HORSES

The motor equipment at Jasper Park Lodge comprises comfortable and luxurious seven-passenger cars and busses. The chauffeurs are an exceptionally fine type of men. Many are university students and are very careful drivers, selected following a rigorous test of their ability. They are versed in the geography and lore of the Park and add much to the pleasure of the drive by their interesting descriptive comments and explanations.

The horses are a good type of mountain horse and outfits are first class in every respect. The guides are fully qualified, experienced and thoroughly dependable men.

BOATING

Paddling on Lac Beauvert is a favoured evening enjoyment. Boats and canoes are available for rent at 50 cents per hour.

DANCING

The Lodge orchestra provides dinner and evening concerts, and music for dancing each evening except Sunday, from 9 to 11 o'clock.

MOTION PICTURES

An entertainment comprising motion pictures is given each evening except Sunday, from 8 to 9 o'clock.

FISHING

Wonderful fishing trips may be arranged at Transportation Desk, Jasper Park Lodge. Jacques Lake, lying between the Maligne and Rocky Rivers, is frequently visited by enthusiastic anglers. There is also trout fishing at Beaver Dam Creek, four miles distant, Buffalo Prairie—Wabasso Lake, ten miles distant, and Hardisty Creek, located at Athabaska Falls, twenty-one miles distant. Camping and fishing trips to Jacques Lake, Buffalo Prairie and Athabaska Falls arranged.

IN THE HEART OF THE CANADIAN ROCKIES

J A S P E R P A R K L O D G E

GENERAL INFORMATION

Arrangements can be made at the Transportation Desk in the Lodge for special motor and saddle horse trips other than those listed herein.

Church services of various denominations are held in the village, and at times special services are held at the Lodge during the tourist season.

The services of a graduate doctor are available at all times, and a qualified nurse is in constant attendance.

Modern stores, carrying up-to-date stocks of general merchandise, drugs, etc., are located in Jasper village.

Guests may have the advantage of the Canadian National Telegraph and Express facilities and Royal Mail service. Money may be forwarded by telegraph to Jasper Park Lodge. Mail should be addressed care of Jasper Park Lodge, Jasper, Alta., and guests are requested to leave their forwarding address when leaving.

Canadian National Railways Tourist Agent is located at the Lodge. He will assist guests in all matters pertaining to tickets, reservations, etc.

Picnic parties can arrange for basket lunches.

For the convenience of tourists from the United States, a Canadian Customs Officer is located at Jasper Park Lodge to facilitate the clearing of tourist baggage from United States points.

IMPORTANT—To avoid delay and inconvenience, it is recommended that trail and hiking outfit be carried in guests' personal baggage.



IN THE HEART OF THE CANADIAN ROCKIES

JASPER PARK LODGE



Mount Robson, 12,972 feet, Monarch of the Canadian Rockies, guards the northern portal of Jasper National Park.

The Bungalow camps at Mount Robson, Kinney Lake and Berg Lake are reached from Mount Robson station on the Jasper - Vancouver line, and from Emperor station on the Jasper - Prince Rupert line.

IN THE HEART OF THE CANADIAN ROCKIES

JASPER PARK LODGE

CANADIAN NATIONAL RAILWAYS

OFFICERS OF THE TRAFFIC DEPARTMENT

A. T. WELDON	Vice-President	Montreal, Que.
H. W. MELANSON	General Passenger Traffic Mgr.	Montreal, Que.
C. W. JOHNSTON	Ass't. General Passenger Traffic Manager	Montreal, Que.
R. CREELMAN	Passenger Traffic Manager	Winnipeg, Man.
M. F. TOMPKINS	Traffic Manager	Moncton, N.B.
C. K. HOWARD	General Tourist Agent	Montreal, Que.
A. A. GARDINER	General Passenger Agent, Steamship Traffic	Montreal, Que.
F. W. ROBERTSON	General Passenger Agent	Moncton, N.B.
E. C. ELLIOTT	General Passenger Agent	Montreal, Que.
H. C. BOURLIER	General Passenger Agent	Toronto, Ont.
A. B. CHOWN	General Passenger Agent	Chicago, Ill., U.S.
OSBORNE SCOTT	General Passenger Agent	Winnipeg, Man.
G. A. McNICHOLL	General Passenger Agent	Vancouver, B.C.

D. O. WOOD	General Freight Traffic Manager	Montreal, Que.
R. L. BURNAP	Asst. Gen'l. Freight Traffic Manager	Montreal, Que.
L. MacDONALD	Freight Traffic Manager	Montreal, Que.
E. F. FLINN	Freight Traffic Manager	Chicago, Ill. U.S.
W. G. MANDERS	Freight Traffic Manager	Winnipeg, Man.
R. W. LONG	Asst. Freight Traffic Manager	Toronto, Ont.
R. J. FOREMAN	General Foreign Freight Agent	Montreal, Que.
W. C. MUIR	Gen. Mgr. Can. National Express	Montreal, Que.

WM. PHILLIPS	Manager Industrial Dept.	Montreal, Que.
--------------	--------------------------	----------------

PASSENGER AGENCIES

(Canada and United States)

Boston, Mass.	H. F. Tilley	201 Province Bldg.	333 Washington St.
Bellville, Ont.	H. C. Thompson		243 Front St.
Brantford, Ont.	J. T. O'Neil		153 Colborne St.
Brockville, Ont.	M. C. Dunn	(After May 1st)	10 Courthouse Ave.
Buffalo, N.Y.	H. M. Morgan	420 Main St.	Liberty Bank Building
Calgary, Alta.	J. H. Norton		218 Eighth Avenue West
Charlottetown, P.E.I.	P. W. Clarkin		C.N. Rys. Station
Chicago, Ill.	C. G. Orttenger		108 West Adams Street
Cincinnati, Ohio	F. H. Bremer	Dixie Terminal Bldg.	49 East Fourth St.
Cleveland, Ohio	H. G. Pentland	Union Trust Bldg.	925 Euclid Ave.
Detroit, Mich.	H. L. McCaughey		1259 Griswold Street
Duluth, Minn.	L. F. Lorentz		3044 West Grand Blvd.
Edmonton, Alta.	W. E. G. Bishop		430 West Superior Street
Grand Rapids, Mich.	J. Madill		Cor. Jasper and 100th Street
Guelph, Ont.	C. A. Justin		Cor. G. T. Railway Station
Halifax, N.S.	B. A. Rose		11 and 13 Wyndham Street
Hamilton, Ont.	J. J. Leydon		107 Hollis Street
Hamilton, Ont.	Jas. Anderson		7 James Street North
Kansas City, Mo.	L. E. Ayer	334-335 Rly. Exchange Bldg.	706 Grand Ave.
Kingston, Ont.	J. P. Hanley		Cor. Johnston and Ontario Streets
London, Ont.	R. E. Ruse		406 Richmond, Cor. Dundas Street
Los Angeles, Cal.	H. R. Bullen		607 South Grand Ave.
Minneapolis, Minn.	G. A. North		518 Second Avenue South
Montreal, Que.	M. O. Dafoe		230 St. James Street
New York, N.Y.	J. F. Young		505 Fifth Ave.
New York, N.Y.	C. E. Jenney		505 Fifth Ave.
North Bay, Ont.	C. W. Murphy		81 Main Street
Ottawa, Ont.	P. M. Butler		93 Sparks Street
Peterboro, Ont.	J. B. Doan		324 George Street
Philadelphia, Pa.	M. J. Wo	Franklin Trust Bldg.	1500-1506 Chestnut St.
Pittsburg, Pa.	W. J. Dun		505 Park Building, 355 Fifth Ave.
Portland, Me.	G. A. Harrison		Cor. G. T. Railway Station
Portland, Ore.	A. B. Holtorp		Pacific Bldg., 302 Yamhill St.
Prince Rupert, B.C.	R. F. McNaughton		528 Third Avenue
Quebec, Que.	J. E. LeBlanc		Cor. Ste. Anne and Dufoir Streets
Regina, Sask.	J. J. Aubin		231 St. Joseph St., St. Roch.
San Francisco, Cal.	S. M. Greene		1874 Scarr Street
Saskatoon, Sask.	W. J. Gilkerson		689 Market Street
Seattle, Wash.	Wm. Stapleton		103 Second Avenue South
Sherbrooke, Que.	J. F. McGuire		1329 Fourth Ave.
St. Catharines, Ont.	A. M. Stevens		23 Wellington St. North
St. Catharines, Ont.	C. J. Harris		106 St. Paul Street
Saint John, N.B.	S. M. Lynde		49 King Street
St. John's, Nfld.	A. Green	Board of Trade Bldg.	155 Water St. East
St. Louis, Mo.	W. H. Burke		Boatmen's Bank Bldg., 314 North Broadway
St. Paul, Minn.	A. H. Davis		83 East Fifth Street
Sudbury, Ont.	A. G. Bell		26 Elm Street
Toronto, Ont.	R. E. Richmond		Cor. King and Vange Street
Vancouver, B.C.	K. E. McLeod		57 Granville Street
Victoria, B.C.	C. F. Earle		911 Government Street
Washington, D.C.	G. L. Bryson		901-15th St. N.W.
Windsor, Ont.	G. E. Walker		24-26 Sandwich St. East
Winnipeg, Man.	F. J. Creighton		Cor. Main St. and Portage Ave.
Woodstock, Ont.	N. A. B. Smith		502 Dundas Street

Printed in Canada -- 2-28

IN THE HEART OF THE CANADIAN ROCKIES

JASPER PARK LODGE

Open May 21—Sept. 30

Rates—American Plan

One-suite cabins, with bath Type A:	Two-suite cabins, with bath Type B:
One or two persons per day . \$30.00	One or two persons in one suite . \$30.00
Three persons 35.00	Three persons in one suite 35.00
Four persons 40.00	Four persons in one suite 40.00

Accommodation in:		Single	Double
Four-room cabins (with bath)	Type C	\$10.50	\$19.50
Four-room cabins (with detached bath), Class "A",	Type D	8.50	15.50
Four-room cabins (with detached bath), Class "B",	Type D	7.50	13.50
Ten-room cabins (with detached bath),	Type E	8.50	15.50
Ten-room cabins (with bath)	Types E & H	10.50	19.50
Twelve-room cabins (with detached bath)	Type F	8.50	single rooms only
Twelve-room cabins (with bath)	Type G	10.00	18.50
Sixteen-room cabin (with bath)	Type J	10.00	single rooms only
Sixteen-room cabin (with detached bath)	Type J	8.50	single rooms only
Main Building (with detached bath)	9.50	17.50
Main Building (with bath)	10.50	19.50

Children seven years and under, half-rate.

Ten per cent discount for a stay of four weeks or longer.

HOTEL DEPARTMENT
MONTREAL, Que.

A. S. McLEAN,
General Superintendent.

WALTER PRATT,
General Manager.



GOLF AT JASPER NATIONAL PARK

Jasper National Park Golf Course, designed to be the last word in lay-out, construction and up-keep, is in every respect a championship course, deliberately planned to be in harmony with the attractions of the natural beauties and grandeur of Rocky Mountain scenery—a Mecca for golfers from all parts of the world.

An annual event is Jasper Golf Week, which in 1928 will be from September 8th to September 15th, when the Totem Pole Trophy is again open for amateur competition.

CANADIAN NATIONAL RAILWAYS

HOTELS OF DISTINCTION

Chateau Laurier	Ottawa
Prince Arthur Hotel	Port Arthur
The Fort Garry	Winnipeg
Prince Edward Hotel	Brandon
The Macdonald	Edmonton

AND THE FOLLOWING OPEN DURING TOURIST SEASON

Jasper Park Lodge	Jasper, Alta.
Minaki Lodge	Minaki, Ont.
Nipigon Lodge	Orient Bay, Ont.
Grand Beach Hotel	Grand Beach, Man.
Pictou Lodge	Pictou, N.S.

A. S. McLean	Montreal, Que.
General Superintendent of Hotels		
Walter Pratt	Montreal, Que.
General Manager of Hotels		

JASPER



NATIONAL
PARK