

CANADIAN NATIONAL RAILWAYS

OFFICERS OF THE TRAFFIC DEPARTMENT

A. T. WELDON, Vice-President	Montreal, Que.
H. H. MELANSON	General Passenger Traffic Mgr Montreal, Que.
C. W. JOHNSTON	Asst. Gen'l Passenger Traffic Mgr Montreal, Que.
R. CREELMAN	Passenger Traffic Manager Winnipeg, Man.
M. F. TOMPKINS	Traffic Manager Moncton, N.B.
C. K. HOWARD	General Tourist Agent Montreal, Que.
A. A. GARDINER	General Passenger Agent, Steamship Traffic Montreal, Que.
F. W. ROBERTSON	General Passenger Agent Moncton, N.B.
E. C. ELLIOTT	General Passenger Agent Montreal, Que.
H. C. BOURLIER	General Passenger Agent Toronto, Ont.
A. B. CHOWN	General Passenger Agent Chicago, Ill., U.S.
OSBORNE SCOTT	General Passenger Agent Winnipeg, Man.
G. A. McNICHOLL	General Passenger Agent Vancouver, B.C.
D. O. WOOD	General Freight Traffic Manager Montreal, Que.
R. L. BURNAP	Asst. Gen'l Freight Traffic Manager Montreal, Que.
L. MacDONALD	Freight Traffic Manager Montreal, Que.
E. F. FLINN	Freight Traffic Manager Chicago, Ill., U.S.
W. G. MANDERS	Freight Traffic Manager Winnipeg, Man.
R. W. LONG	Asst. Freight Traffic Manager Toronto, Ont.
R. J. FOREMAN	General Foreign Freight Agent Montreal, Que.
W. C. MUIR	Gen. Mgr. Can. National Express Montreal, Que.

WM. PHILLIPS, Manager Industrial Dept. Montreal, Que.

PASSENGER AGENCIES

(Canada and United States)

Belleville, Ont.	H. C. Thompson	243 Front St.
Boston, Mass.	H. F. Tilley	201 Province Bldg., 333 Washington St.
Brantford, Ont.	J. T. O'Neal	153 Colborne St.
Brockville, Ont.	M. C. Dunn	10 Courthouse Ave.
Buffalo, N.Y.	H. M. Morgan	11 South Division Street
Calgary, Alta.	J. H. Norton	218 Eighth Avenue West
Charlottetown, P.E.I.	P. W. Clarkin	C.N. Rys. Station
Chicago, Ill.	C. G. Orttenburger	108 West Adams Street
Cincinnati, Ohio	F. H. Bremer	Dixie Terminal Bldg., 49 East Fourth St.
Cleveland, Ohio	H. G. Pentland	Union Trust Bldg., 925 Euclid Ave.
Detroit, Mich.	H. L. McCaughey	1259 Griswold Street
Duluth, Minn.	L. F. Lorentz	3044 West Grand Blvd.
Edmonton, Alta.	W. E. G. Bishop	430 West Superior Street
Grand Rapids, Mich.	J. Madill	Cor. Jasper and 100th Street
Guelph, Ont.	C. A. Justin	G. T. Railway Station
Halifax, N.S.	B. A. Rose	11 and 13 Wyndham Street
Hamilton, Ont.	J. J. Leydon	107 Hollis Street
Kansas City, Mo.	Jas. Anderson	7 James Street North
Kingston, Ont.	L. E. Ayer	334-335 Rly. Exchange Bldg., 706 Grand Ave.
London, Ont.	J. P. Hanley	Cor. Johnston and Ontario Streets
Los Angeles, Cal.	R. E. Ruse	406 Richmond, Cor. Dundas Street
Minneapolis, Minn.	H. R. Bullen	607 South Grand Ave.
Montreal, Que.	G. A. North	518 Second Avenue South
New York, N.Y.	M. O. Dafoe	230 St. James Street
North Bay, Ont.	F. A. Young	505 Fifth Ave.
Ottawa, Ont.	C. E. Jenney	505 Fifth Ave.
Peterboro, Ont.	C. W. Murphy	81 Main Street
Philadelphia, Pa.	P. M. Butler	93 Sparks Street
Pittsburg, Pa.	J. B. Doran	324 George Street
Portland, Me.	M. J. Woods	Franklin Trust Bldg., 1500-1506 Chestnut St.
Portland, Ore.	W. J. Burr	505 Park Building, 355 Fifth Ave.
Prince Rupert, B.C.	G. A. Harrison	G. T. Railway Station
Quebec, Que.	A. B. Holtorp	Pacific Bldg., 302 Yamhill St.
Regina, Sask.	R. F. McNaughton	528 Third Avenue
San Francisco, Cal.	J. E. LeBlanc	Cor. Ste. Anne and Dufort Streets
Saskatoon, Sask.	J. J. Aubin	231 St. Joseph St., St. Roch
Seattle, Wash.	S. M. Creene	1874 Scarth Street
Sherbrooke, Que.	W. J. Gilkerson	689 Market Street
St. Catharines, Ont.	Wm. Stapleton	103 Second Avenue South
St. John's, Nfld.	J. F. McGuire	1329 Fourth Ave.
St. John's, Nfld.	A. M. Stevens	23 Wellington St. North
St. Louis, Mo.	C. J. Harris	106 St. Paul Street
St. Paul, Minn.	L. C. Lynds	49 King Street
Sudbury, Ont.	A. Green	Board of Trade Bldg., 155 Water St. East
Toronto, Ont.	W. H. Burke	Boatmen's Bank Bldg., 314 North Broadway
Vancouver, B.C.	A. H. Davis	83 East Fifth Street
Victoria, B.C.	A. G. Bell	26 Elm Street West
Washington, D.C.	R. E. Richmond	Cor. King and Yonge Street
Windsor, Ont.	K. E. McLeod	527 Granville Street
Winnipeg, Man.	C. F. Earle	911 Government Street
Woodstock, Ont.	G. L. Bryson	901-15th St. N.W.
	G. E. Walker	24-26 Sandwich St., East
	F. J. Creighton	Cor. Main St. and Portage Ave.
	N. A. B. Smith	502 Dundas Street

MAP OF THE

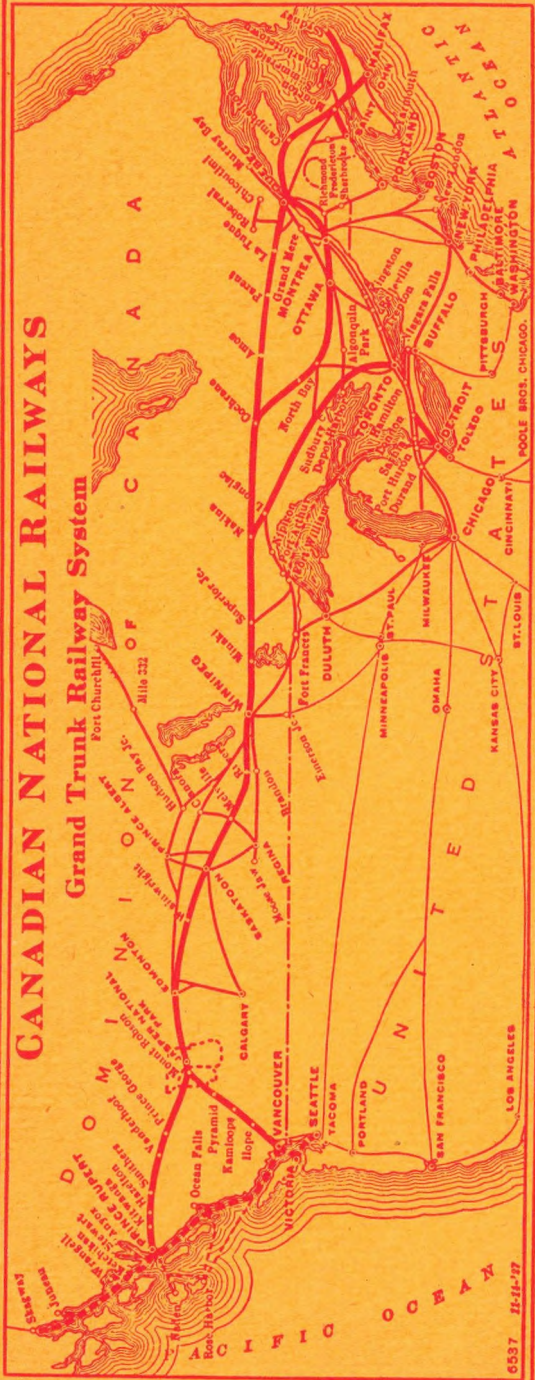
Canadian Rockies TRIANGLE TOUR OF British Columbia

ALASKA AND THE YUKON

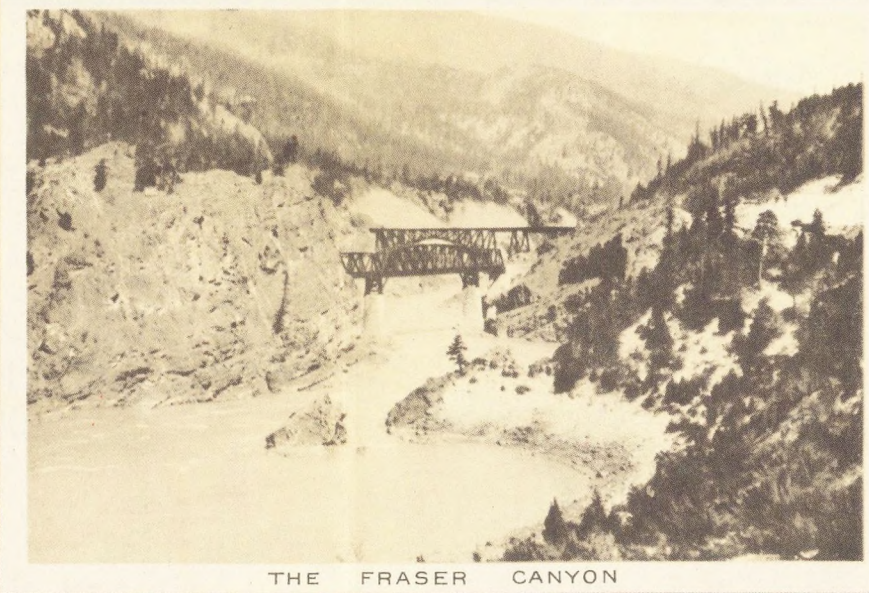
CANADIAN NATIONAL LARGEST RAILWAY SYSTEM IN AMERICA

CANADIAN NATIONAL RAILWAYS

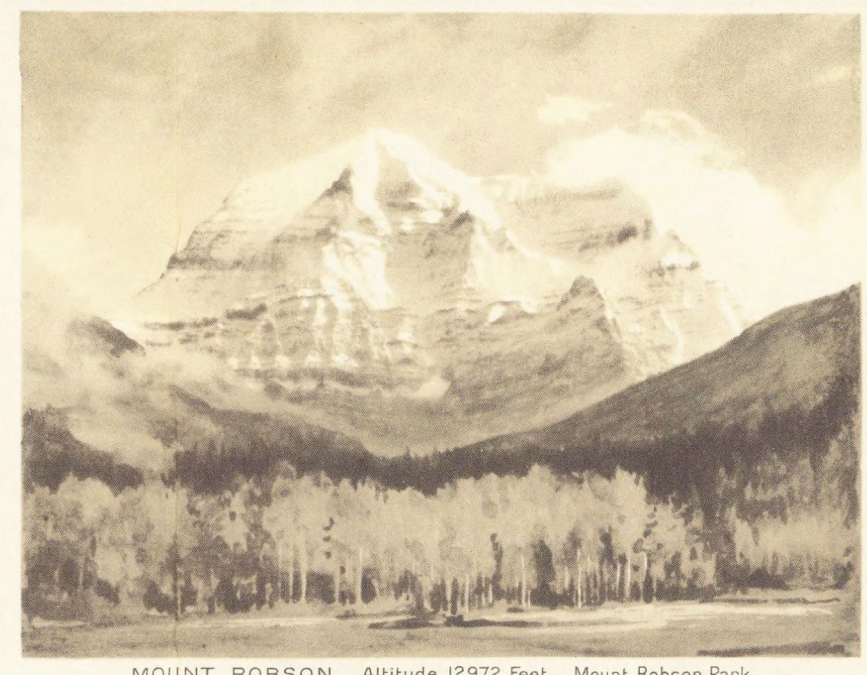
Grand Trunk Railway System



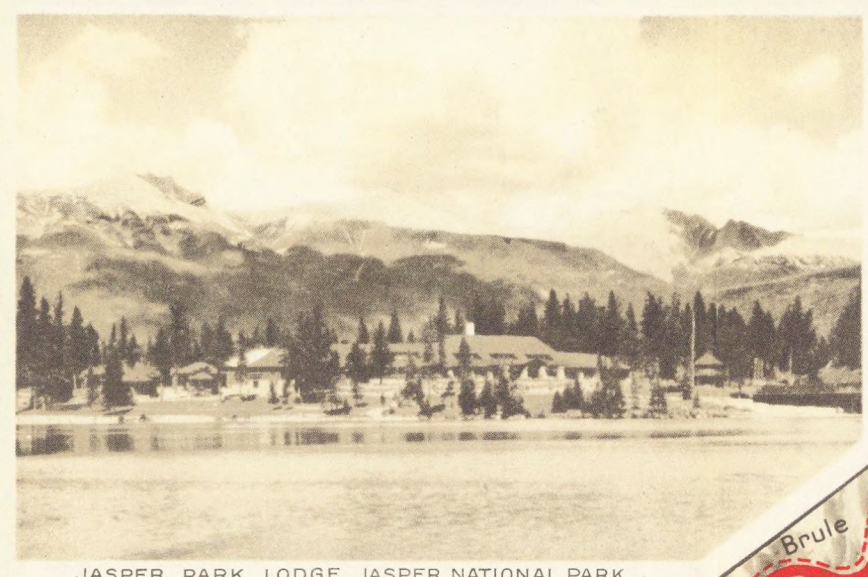
6537 11-11-17



THE FRASER CANYON



MOUNT ROBSON, Altitude 12,972 Feet, Mount Robson Park



JASPER PARK LODGE, JASPER NATIONAL PARK



TOTEM POLES, KITWANGA



SCENIC SEAS, PACIFIC COAST

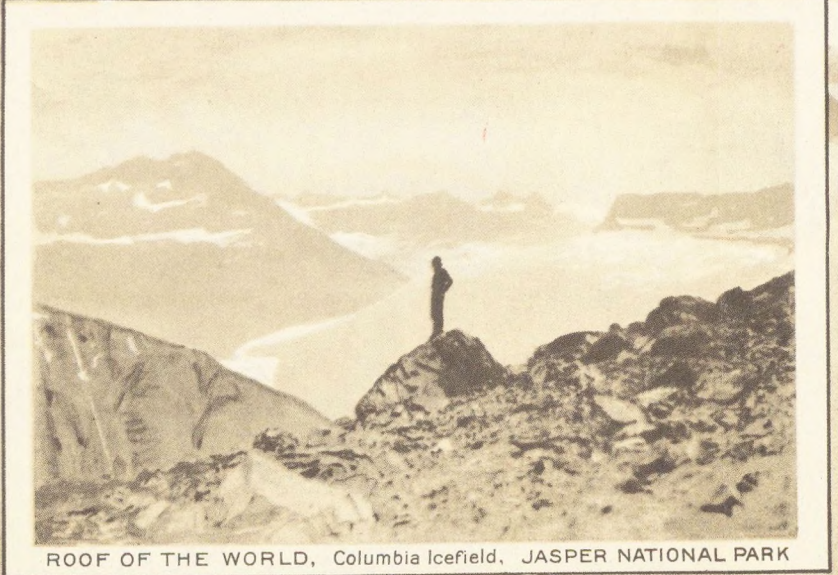
The Triangle Tour of British Columbia
1200 Miles by Rail - 500 Miles by Water

The two land sides of the Triangle Tour traversed by the Canadian National Railways, the one from Jasper to Prince Rupert, the other from Jasper to Vancouver, lie through a part of the Dominion of Canada, that for charm and grandeur of scenery, the multitude of its mountains, the remarkable character of its many rivers and their canyons, cannot be surpassed.

The Canadian National Steamship route between Vancouver and Prince Rupert, except for about twenty-five miles, and at a point where Queen Charlotte Sound intervenes, lies wholly within land-locked waters. The channel seldom exceeding a mile or two in width, between a chain of islands to the West and the mainland to the East, it naturally follows, that normally its surface is quite smooth. Landward lies the Coast Range, broken by bays and inlets through which distant views are obtained of seemingly endless mountains rising tier upon tier to lose themselves in the clouds.

JASPER NATIONAL PARK

Of all the National Parks on this continent, Jasper is the largest. It covers an area of 5,300 square miles, — a mountain kingdom as large as some European countries, part of it still unmapped and unexplored. There are whole regions of sublime grandeur, which as yet, scarcely half a dozen white men have penetrated. From the great glaciers in the Columbia Icefield, which is included in the Park area, are born rivers which take their way, finally by way of the Columbia, the Saskatchewan, and the Athabaska, to the Pacific, Atlantic and Arctic Oceans. But also, in that thin fringe which civilization has conquered, there are to be found all the refinements and comforts the modern tourist demands, a delightful hotel — Jasper Park Lodge, golf links that can take their place among the best on the continent, swimming pools, tennis courts, and excellent roads for motoring. Being a game sanctuary, one of the great charms of Jasper National Park is the abundance and fearlessness of its wild life. Nowhere are there better opportunities for recording intimate studies of wild animals, either by the moving picture or the still.



ROOF OF THE WORLD, Columbia Icefield, JASPER NATIONAL PARK

THE TRIANGLE TOUR OF BRITISH COLUMBIA
JASPER NATIONAL PARK
MOUNT ROBSON PARK
CANADIAN ROCKIES
 AND
THE SCENIC SEAS OF THE NORTH PACIFIC COAST
CANADIAN NATIONAL RAILWAYS

C.N.R. — S. SHIP LINES — TRAILS — BOUNDARIES OF PARKS

LITHOGRAPHED IN CANADA

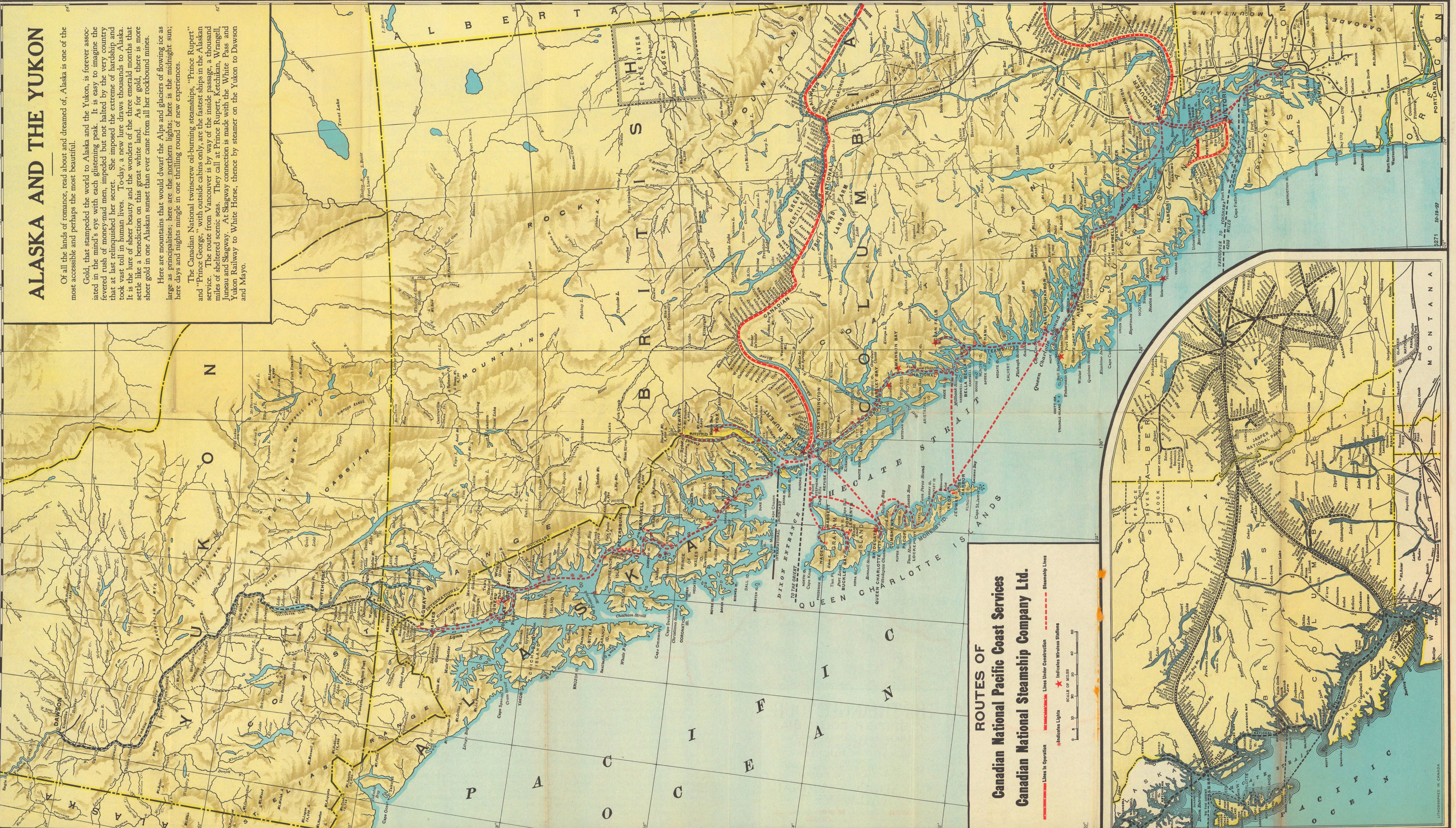
ALASKA AND THE YUKON

Of all the lands of romance, read about and dreamed of, Alaska is one of the most accessible and perhaps the most beautiful.

Gold, that stamped the world to Alaska and the Yukon, is forever associated in the mind's eye with each glistening peak. It is easy to imagine the fevered rush of money-mad men, impeded but not halted by the very country that at last relinquished her secret. She imposed the extreme of hardship and took vast toll in human lives. Today, a new lure draws thousands to Alaska. It is the lure of sheer beauty and the wonders of the three emerald months that settle like a benediction on this great white land. As for gold, there is more sheer gold in one Alaskan sunset than ever came from all her rockbound mines.

Here are mountains that would dwarf the Alps and glaciers of flowing ice as large as principalities; here are the northern lights; here is the midnight sun; here days and nights mingle in one thrilling round of new experiences.

The Canadian National twin-screw oil-burning steamships, "Prince Rupert" and "Prince George," with outside cabins only, are the fastest ships in the Alaskan service. The route from Vancouver is by way of the inside passage, a thousand miles of sheltered scenic seas. They call at Prince Rupert, Ketchikan, Wrangell, Juneau and Skagway. At Skagway connection is made with the White Pass and Yukon Railway to White Horse, thence by steamer on the Yukon to Dawson and Mayo.



ROUTES OF
Canadian National Steamship Company Ltd.
Canadian National Steamship Company Ltd.

- Lines in Operation
- Lines Under Construction
- ★ Indicates Wireless Stations

SCALE OF MILES

