



THE NEW

AGUILA AZTECA

TRAINS

to travel...

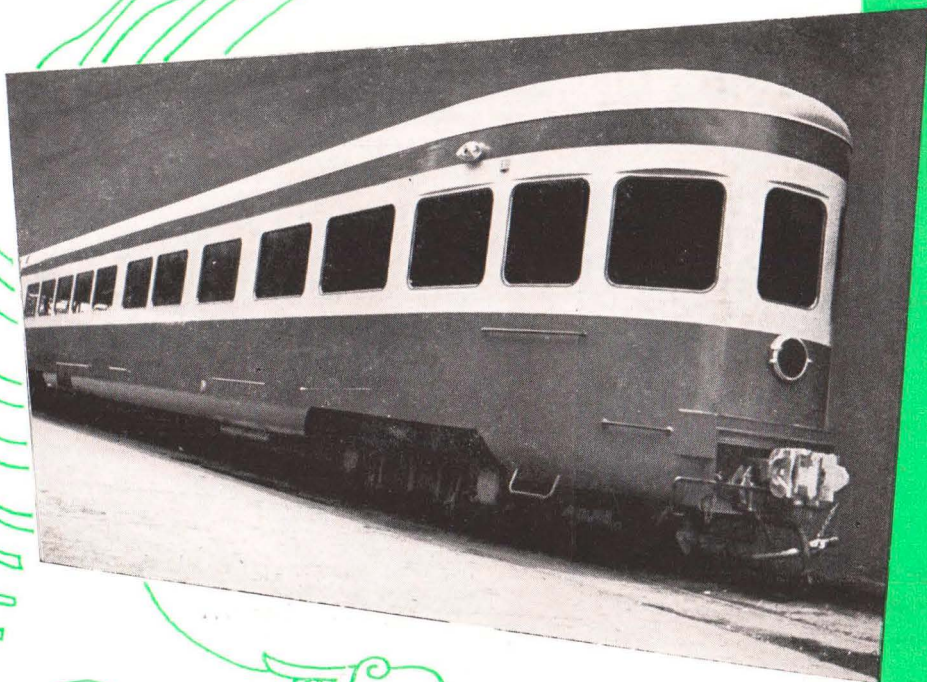
IS TO ESCAPE from your every-day surroundings—gaily to seek unfamiliar scenes—a different atmosphere—a new life. A journey is the best way to obtain a real rest, to renew both mind and body and return with added zest to the effort and tension life imposes upon us.

OUR ANCESTORS travelled mostly from necessity, accepting discomfort and fatigue as inevitable. The means of locomotion were primitive; the destination and duration of the journey uncertain, and besides, travelling was beyond the means of the ordinary person.

TODAY, ON THE CONTRARY, most trips are made for pleasure, rest and even for curiosity, and to satisfy the restless urge that comes to all of us some times, and to some of us often.

AND, IN CONTRAST with the days of the stage coach and pack boat, when journeys were both interminable and uncertain, and a traveller drew up his will before leaving for the unknown, today's passenger boards the train with the certainty that his trip will be brief, free of hardships, and with prices and itineraries previously established, and that all the comforts and technical resources of our time will be at his disposal. The beauty of it is that while the passenger is whizzing toward far away places, he continues enjoying all those little things that make life a pleasure.

IN THE MODERN RAILROAD TRAIN, the passenger does not have to deprive himself of the comforts and refinements to which he is accustomed. Many men have joined their efforts, years of experience and most modern technical know-how, to make the traveller's trip comfortable, happy and restful. Thus, the cars become like your own home—a bed to sleep in, a reclining easy chair from which to contemplate the scenery, good wines, exquisite meals, warm baths—and all this in a cosmopolitan midst where one meets interesting people in a congenial atmosphere... Because in the luxury train, the very trip itself is stimulating. It puts us in the right mood to forget our daily reserve and accept the casual confidences, the open spontaneity of conversations, the sudden congenialities, the friendly chats... and perhaps even the adventure which we may decide to conserve, or let vanish like smoke when we arrive at our destination.



THE NATIONAL RAILWAYS OF MEXICO have provided the AGUILAZTECA (Aztec Eagle) TRAIN (which runs between Mexico City and New Laredo) with new cars designed and built by the firm Schindler Wagons, S. A. of Pratterln, Switzerland, the most modern and elegantly constructed in Europe... the National Railways of Mexico thus initiates a new era for the benefit of their passengers: *Perfect service, luxurious surroundings, maximum comfort.*

on the road...



The new trains...

which the National Railways of Mexico have placed on the AGUILA AZTECA route represent an improvement which starts a new era in Mexican transportation: Perfect service, luxurious atmosphere, and unprecedented comfort.

Constructed in Europe...

these cars have a distinctive European character, a reminder of old capitals, of legendary vacation resorts, of cosmopolitan, cross-continent convoys of novelistic renown... the "Near East Express"... the "Paris-Lyon-Mediterranean".

Refined atmosphere...

extends from the first class Standard cars to the chic Bar-Observation Car... the latest improvements in European technique give the train the unique prestige enjoyed by the big hotels and famous trans-Atlantic liners... experience and effort have combined happily to surround the traveller with the last word in comfort and elegance...

Air conditioning...

electro-mechanical, diffuses a constantly agreeable temperature, regardless of the weather outside... Aboard the new trains, distance, altitude, heat or fatigue, will never oppress the traveller... Travel-weariness is magically eliminated.

Baggage...

is no longer amassed in the same car where you travel, obstructing the aisle, making free movement difficult and spoiling the appearance of the car, which now remains free, like a spacious living-room or the favorite corner of your own home, a place of order, cleanliness and harmony...

Bathing in the same train...

in which you travel, with hot water at all hours during the whole journey in a luxury bathroom as complete as that of any residence. This, besides being the last word in comfort, allows you to reach your destination fresh, well groomed, completely rested and fit for an important business interview, a social engagement, or to meet your loved ones...

The dining car...

similar to an European restaurant, with distinctive cutlery, linen and crystalware, specially designed and made, offers passengers a truly perfect dinner service at normal prices...

The bar-observatory car...

which is like the most distinguished salon in exclusive circles, has been decorated with pre-Cortesian motifs, adapted to modern lines... Here cordiality and discreet courtesy make travelling most pleasant, and weld friendships, while you enjoy the changing panorama of the road...

Exceptional visibility...

is afforded by the wide windows, which are sealed by a special process to avoid the penetration of dust, rain, noise, etc... Their strategic design makes the traveller feel a part of the landscape, which may be enjoyed from any seat in the car.

The first class de luxe cars...

have 56 reclining seats, easily adjusted by a simple effortless movement... They are designed for rest and comfort... In this modern coach the sleepers are com-

posed of eight sections and three private bedrooms or drawing rooms and bedrooms with inter-communication if passengers so desire.

The lighting in the cars...

with independent equipment for each unit, has been carefully studied so that its three intensities may serve the passengers' needs, without glaring into their eyes.

The AGUILA AZTECA train...

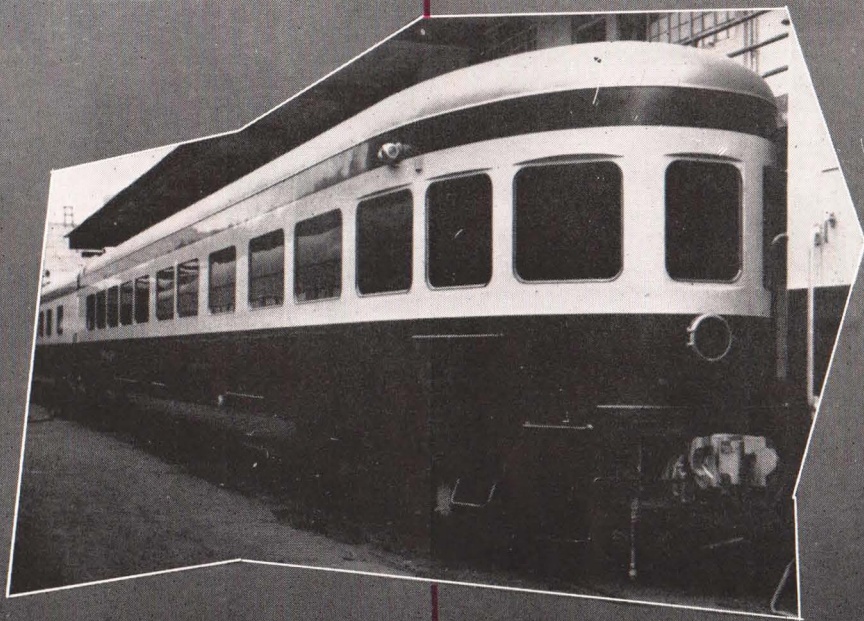
consists of one first class standard car, two first class luxury cars (with numbered seats and hot water bath service), two sleeping cars with sections and bedrooms, also with bath, one car with bedrooms and drawing rooms with private baths, dining car with 44 seats; the bar-observation car... and one mail-baggage car...

The artists designers...

have succeeded in blending authentic Mexican themes within modern architectural lines... The decorative tones are harmonious and exquisitely discreet... The cars named "Chichén-Itzá," "Kabah," "Uxmal," "Bonampak," "Teocali," "Mitla," etc., will surely fill a place amongst your most agreeable memories...

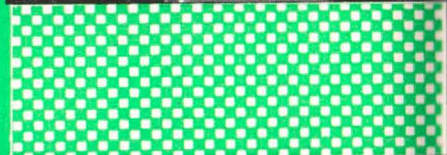
The train crew...

has been selected for its experience, courtesy, discipline, and ability to anticipate the needs of the traveller, and for its constant effort to make each trip an agreeable experience, for women, business men, tourists, and children... As a special innovation, which goes hand in hand with our present needs, a young lady stewardess will offer to travellers her cordial and tactful attention...



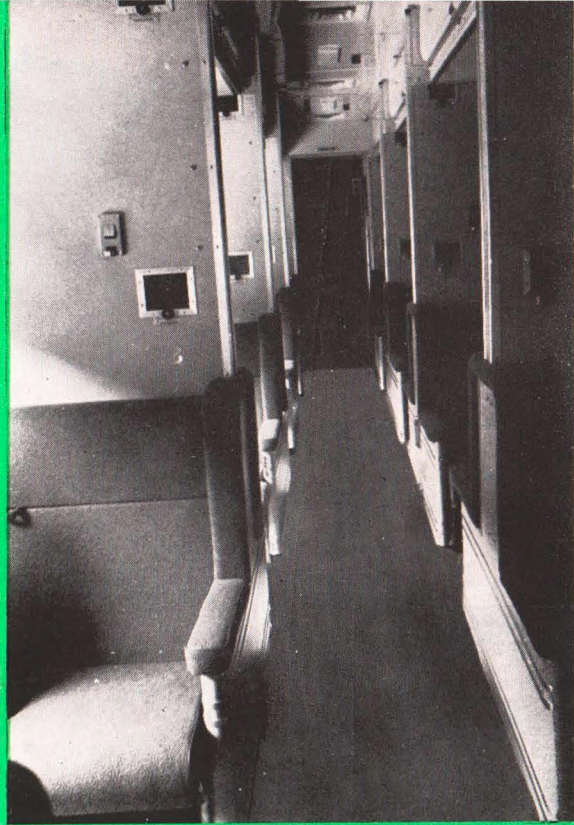
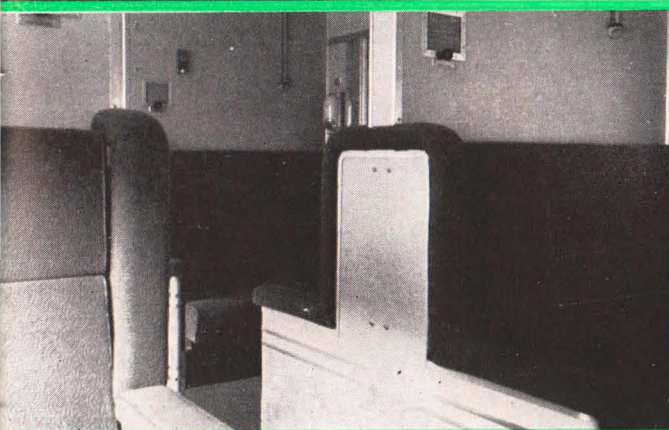
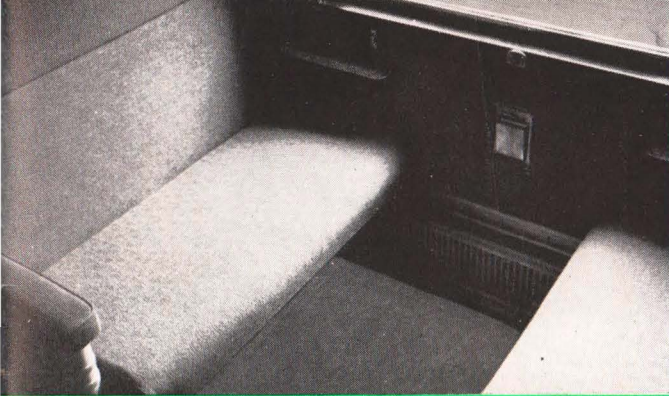


FIRST CLASS luxury cars constructed with 56 reclining seats, adjustable with one simple, effortless movement to suit individual preference... Designed for rest and comfort...

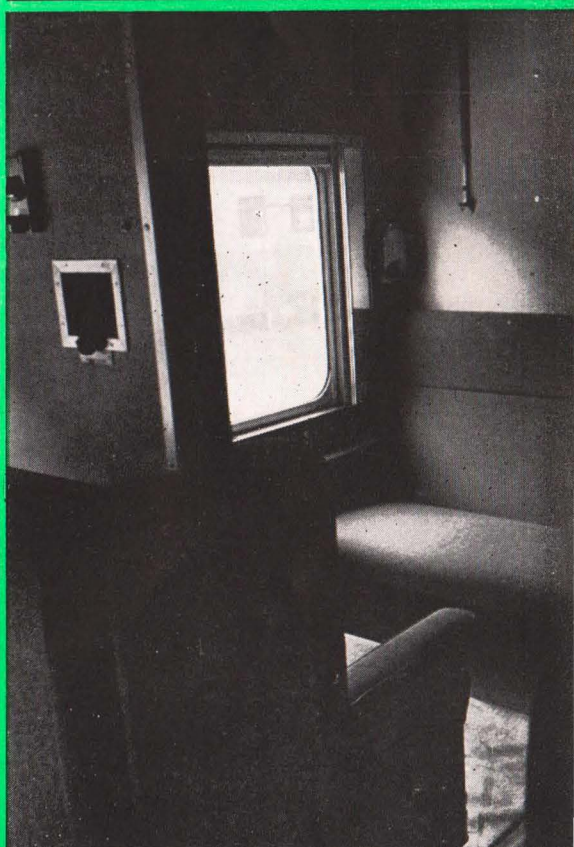
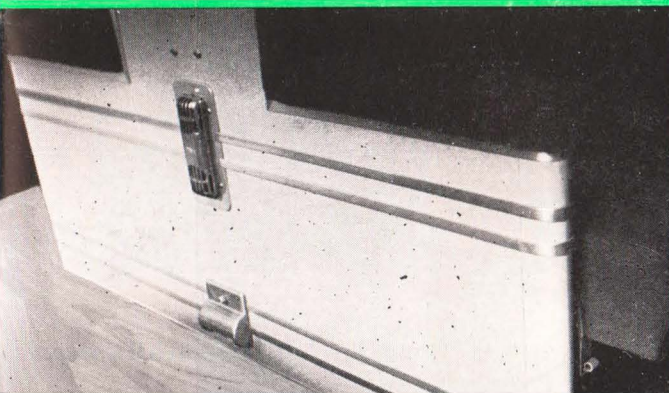


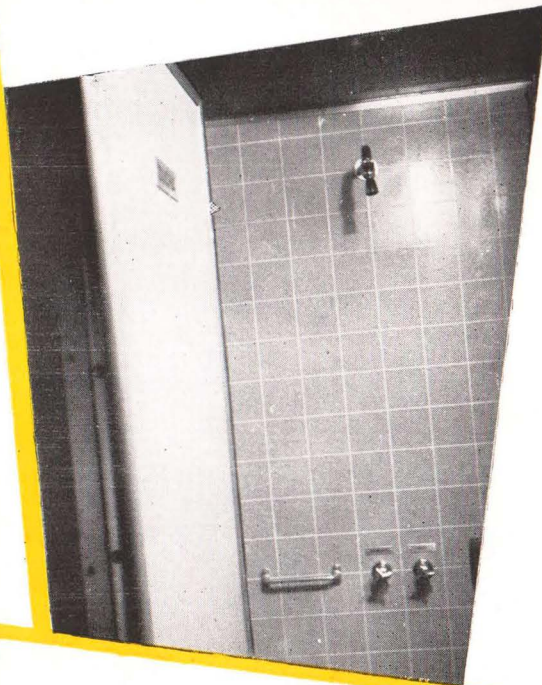
ALL SEATS in First Class luxury cars have been numbered, to give the passenger better service and to avoid loss of time...





FIVE ASPECTS and details of the Pullman Sleeping Cars, modern of design, and built with all improvements by the firm Schindler Wagons, S. A., of Pratterln, Switzerland. Their design affords absolute comfort, and the windows (1 m. and 20 cms. wide), allow greater visibility... The sealed panes prevent passage of dust, rain, noise, etc... Decoration in silk and cotton fabrics and woolen carpets in contrasting colors...



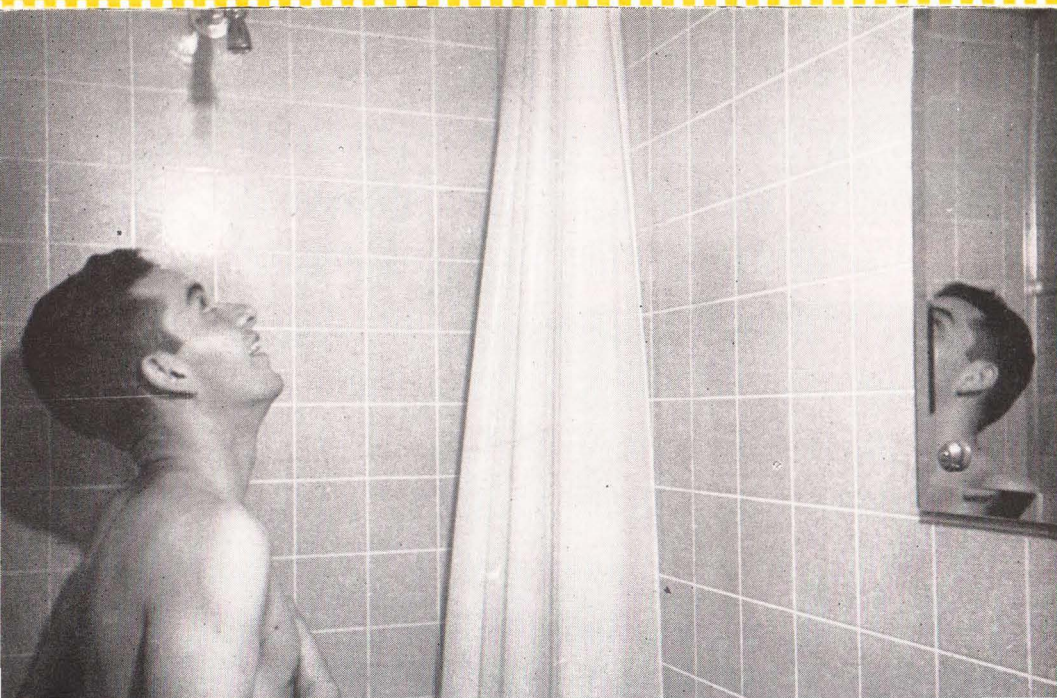
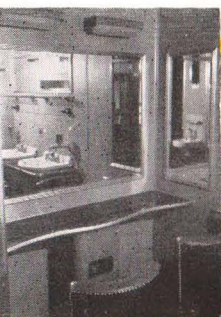


ALL AGUILA AZTECA cars offer a new inducement and service to the traveller..'

YOU CAN take your bath in the train... with hot water service at any hour and during the whole trip...

THE *décor* of the bathrooms is modern and elegant...

A WARM shower will enable you to arrive fresh and rested...





EACH CAR in the AGUILA AZTECA train has private dressing rooms, for both ladies and gentlemen... Roomy, comfortable and beautiful, they afford the passenger a new and pleasant service... Hot water at any moment... which will please any woman's vanity.



the toilette...

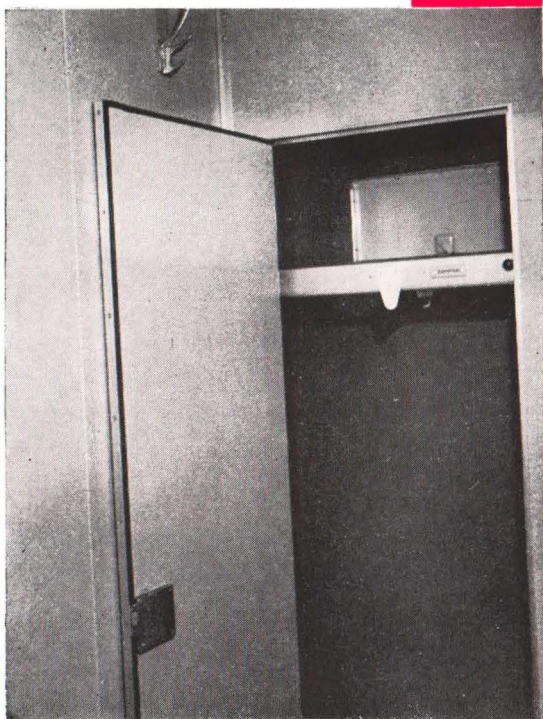
MILADY will find in the dressing room all the requisites for her toilette... private, spacious and exclusive... the air conditioning will add to her comfort.



for baggage. . .

THE designers of these new trains constructed in Europe, have considered the passengers' comfort in every way. Baggage is not piled up in the same place where you travel, obstructing passage, hindering free movement and spoiling the appearance of the cars. . . There is a special compartment for its storage, leaving the car free and clean as your own living room, or the favorite corner in your own home. . .

For baggage the new AGUILA AZTECA CARS have solved an old and bothersome problem... they have special compartments to store baggage and parcels...



WITHOUT any charge
the train crew of the
AGUILA AZTECA trains will
handle and place your
baggage in a special
compartment, thus
freeing the aisles
of all obstruction.
Each passenger may keep
at hand any or all
articles he requires during
the trip, but without
disturbing his fellow
passengers. . . Travellers
in the bedrooms or
drawing rooms have
individual closets for the
same purpose. . . All this
is part of the personal
attention each traveller
receives in the
AGUILA AZTECA Train.

personal attention. . .

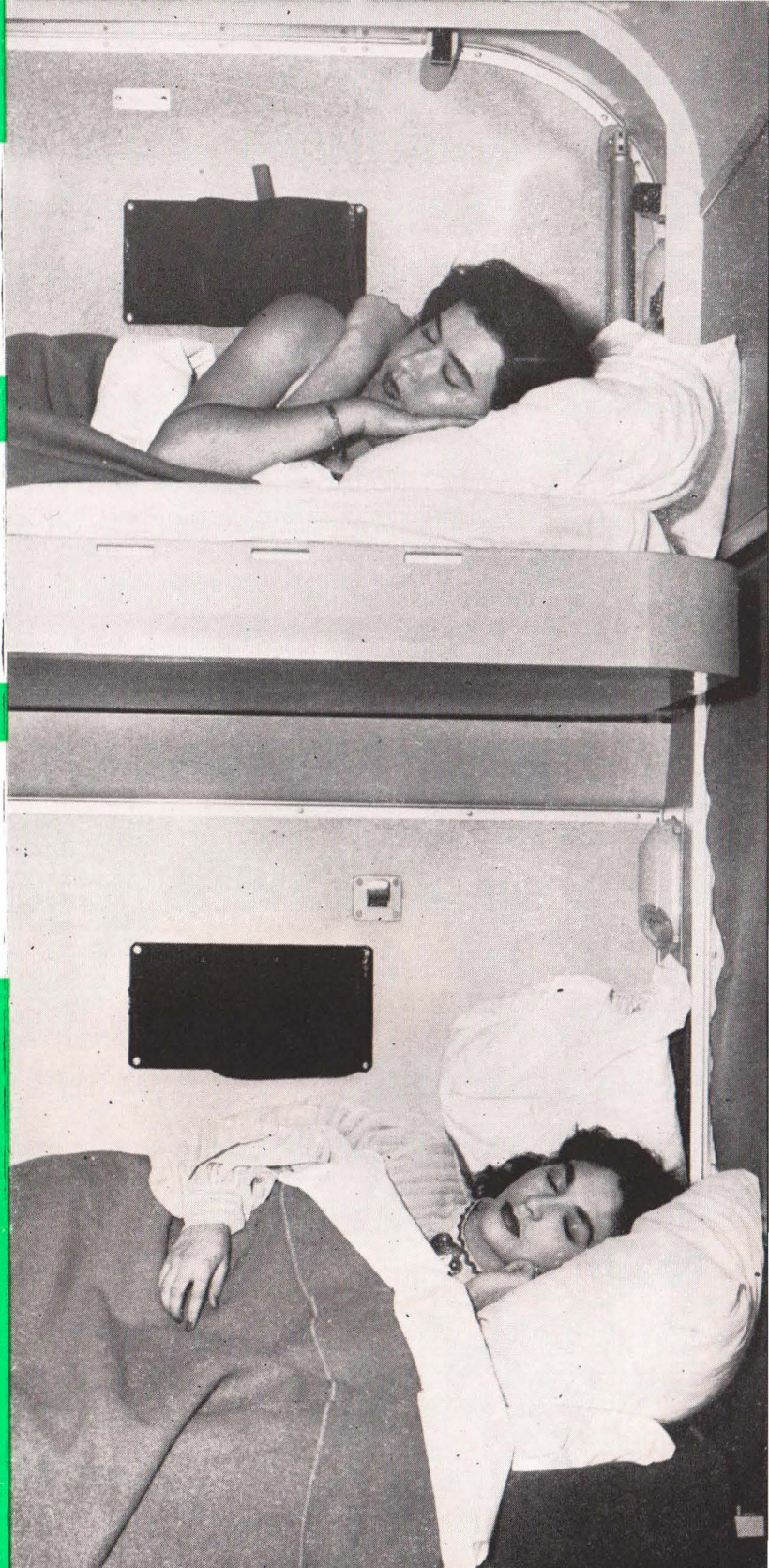


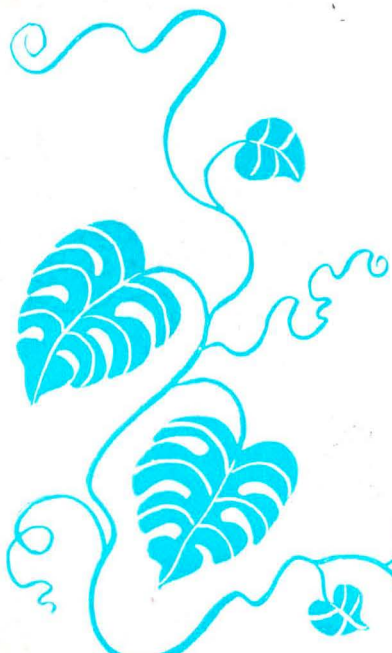
THE bedrooms in the modern AGUILA AZTECA trains are equipped with all the possible conveniences found in any railroad... A new extension system allows a big family to travel in two bedrooms or drawing rooms separately or with inter-communication... Here the bath and toilette services are splendid... the latest improvements in European technique lend this train the unique prestige found in big hotels and famous liners...



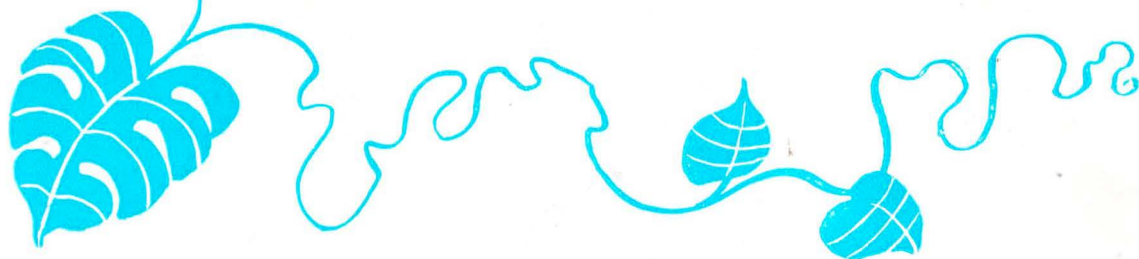


SLEEP, rest, the greatest human necessity, was a matter of grave concern to the constructors of these modern cars... Aboard the AGUILA AZTECA you will find service... rest... comfort...





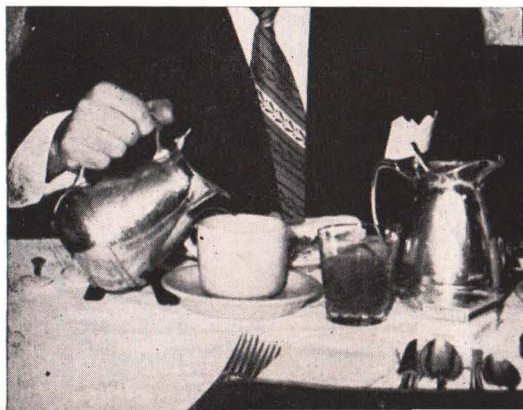
EVERYTHING is planned for the traveller's comfort and pleasure on the AGUILA AZTECA route... The dining car, similar to that of any great restaurant, offers splendid service... Prices are reasonable and the personnel expert, attentive and diligent... The *décor* and furniture are pleasingly combined.





THE crew of expert chefs is a guarantee of satisfaction about TECA... You will find select meals at fair prices... The personnel is capable, and willing... The *décor* is as pleasant and well-maintained as the other departments of this modern train...

IN an atmosphere of elegance and refinement, you will find the pleasure your palate and good taste demand...



DURING the meal, you will enjoy delicious food and if you prefer, you can order your special menu. You will certainly live



THE dining car service is equipped with the best... the crystal and china ware, cutlery and napery have been specially designed for you... An attentive steward is ready to accept or suggest your order, and a diligent waiter will serve you with promptitude...

ard the AGUILA AZ-
ersonnel is efficient,
all selected as in all

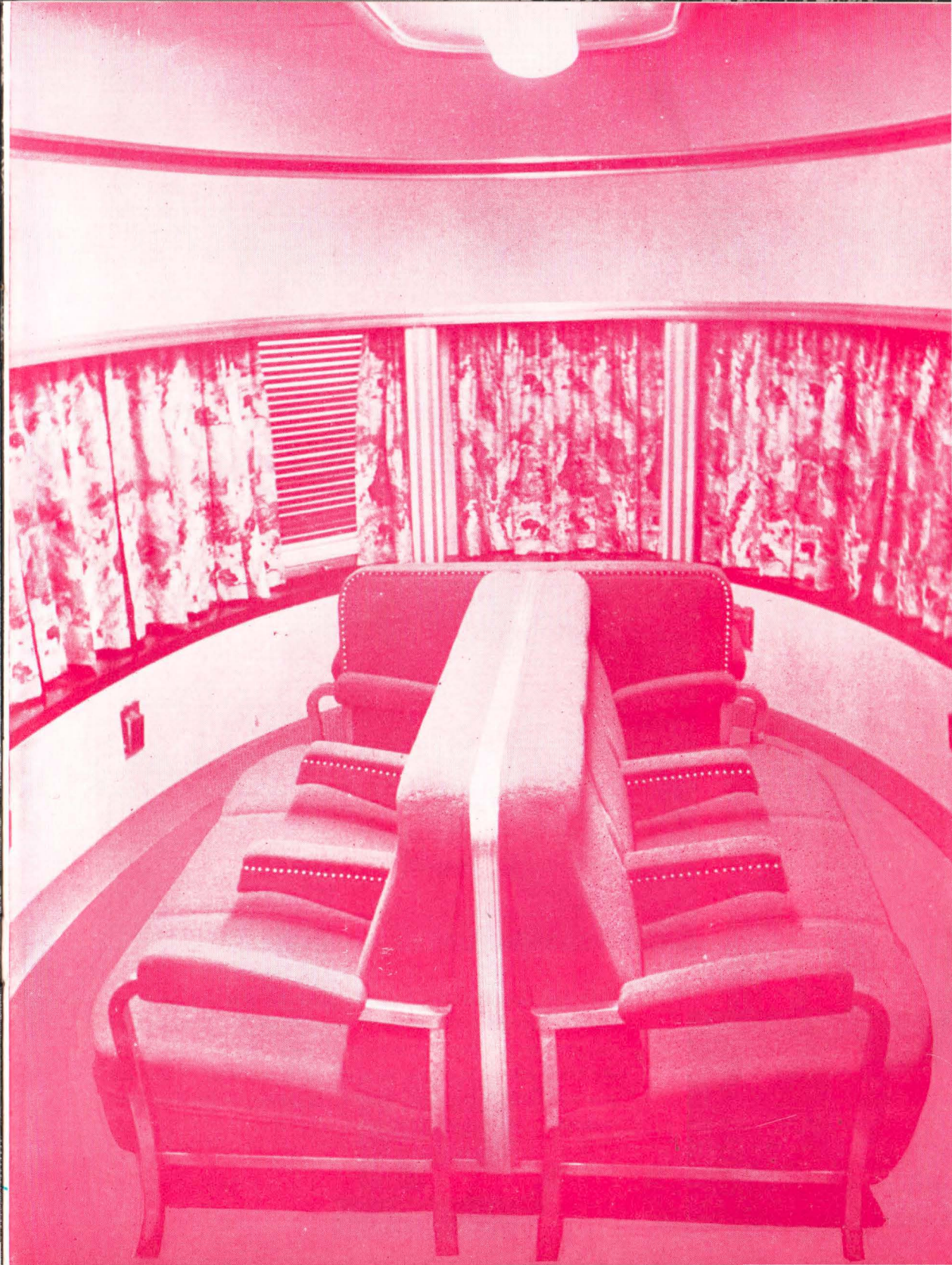
ourney you will find
d in the dining car,
fer you may order to
taste. . . You will
pleasant hours. . .



the landscape. . .

IN THE OBSERVATION CAR you will enjoy the most cordial and discreet courtesy, which makes a veritable adventure of travel... and welds friendships. Meanwhile you are enjoying the ever-variant and beautiful landscape along the way... The comfort of the seats and size of the windows will bring the scenery to you... with all the beauty and images of interest along the AGUILA AZTECA route...





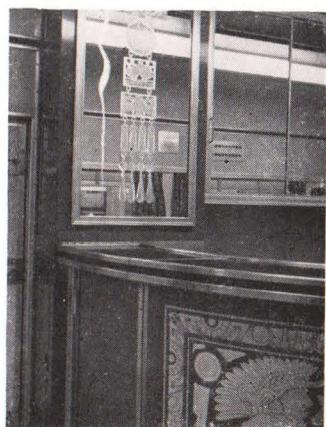
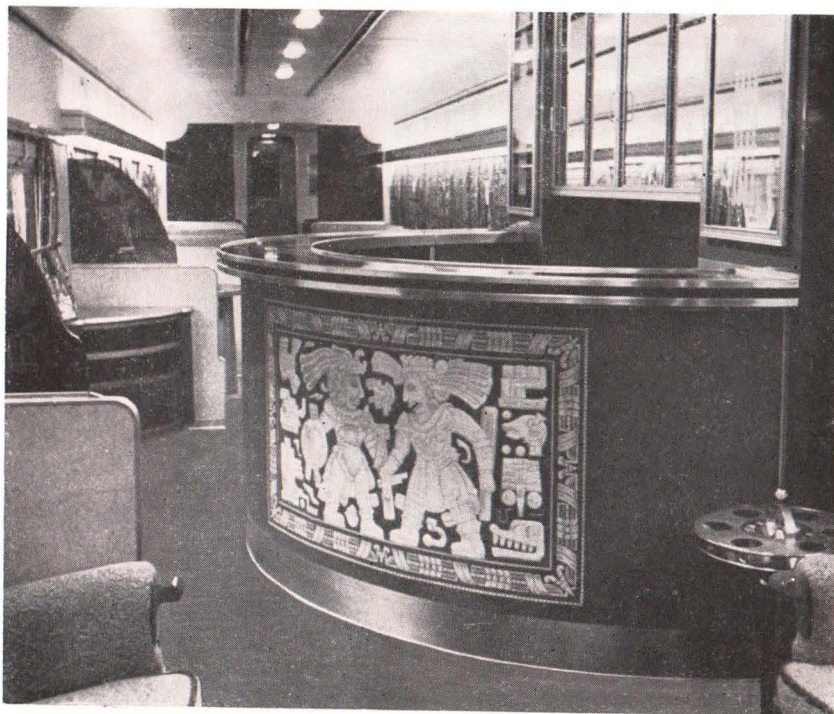


THESE new cars have been constructed to offer really tangible and amiable comfort. The shock-absorber system (oil base), 8 for each truck, almost eliminates the sensation of train movement.

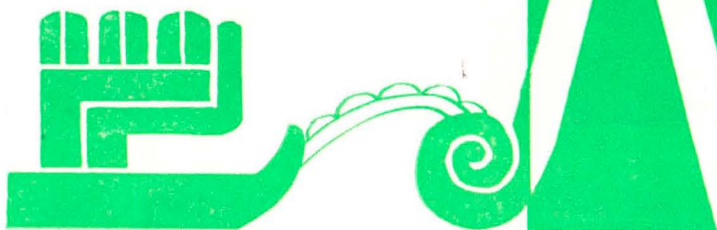


THE BAR OBSERVATION CAR is a place for rest and conversation... bringing you pleasant reminiscences at the end of the journey... Ample armchairs offer comfort and rest, while the train smoothly wends its way... In a corner of this car you will find a desk to attend to your correspondence or send messages...





THE STREAMLINED BAR is decorated with Pre-Cortesian themes... Crystal ware, woodwork and tapestry give the place an original atmosphere... A perfect electro-mechanical air conditioning system imparts an always agreeable temperature, whatever the outside climate may be... In the midst of elegance, modernity and refinement, cordiality will flourish...



THE BAR...

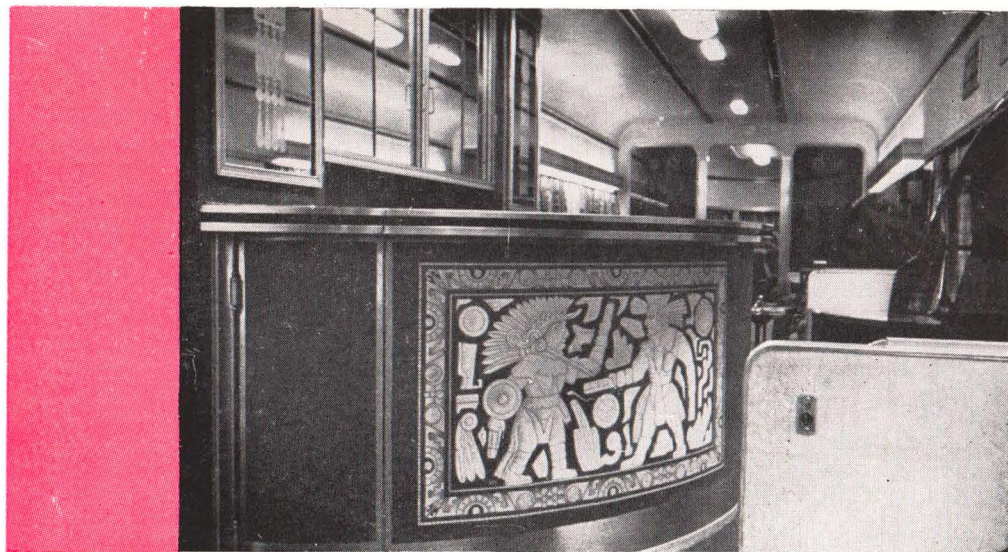
IN A CORDIAL and refined atmosphere you will let time go by... Everything combines to help you forget your cares.

THE DECORATIONS have been studied with a view to avoiding fatigue, no matter how long your trip may be...

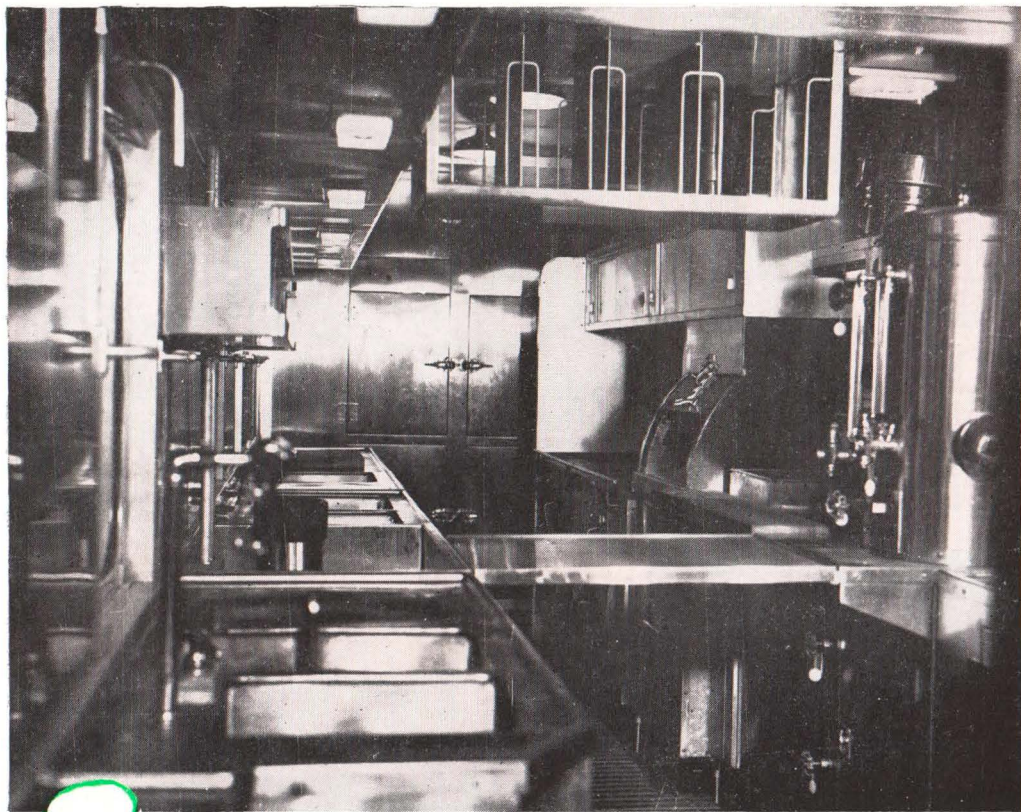
THE AZTEC MOTIFS are particularly gay... and at the bar you will find your favorite drinks...

AN EXPERIENCED BARTENDER, waiters and a kind stewardess will serve the traveller with personal care and attention...





THE ARTISTIC DESIGNERS have succeeded in combining truly authentic Mexican themes and elements, in scenes and ornamentation, with the modern streamlining of the cars. The decorative tones are harmonious and subdued. The cars are named CHICHEN-ITZA, KABAH, UXMAL, BONAMPAK, MITLA, GRAN TEOCALI, MONTE ALBAN, and PALENQUE... The Bar Observation Cars are called: QLMECA, MEXICA and MAYA...



the kitchen...

IN THE SPACIOUS KITCHEN, everything essential for cooking refinement will be found... A competent Chef will preside aboard the AGUILA AZTECA, a train which is justly the pride of the National Railways of Mexico... Before each trip the Chef will carefully prepare the menus... The special dishes, varied and select, will be one treat more for the traveller...

TECHNICAL DATA

THE NEW CARS of the AGUILA AZTECA train were designed and constructed by Schindler Wagons, S. A., of Patterln, Switzerland. They own the patent for the latest improvements in the construction of railway trucks.

Each truck has four steel wheels rolled to English manufacturing standards, the sturdy characteristics of which conform completely to the exacting specifications of the American Association of Railroads. Each wheel has a double clasp-brake which makes the air application more uniform and powerful.

Another improvement which means greater comfort for the passengers is the shock-absorber system (oil base), eight to each truck, which eliminates the jar of sudden train movement... avoiding the

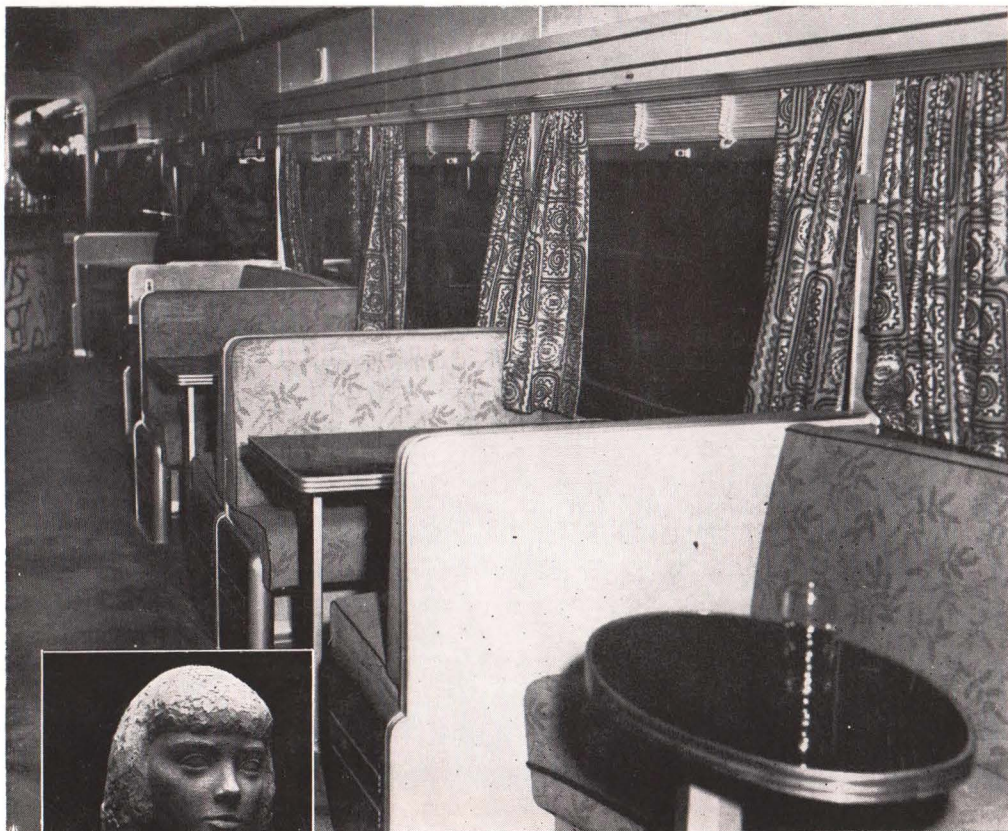
rude sensation to which we were all accustomed in railway travel...

These coaches have incorporated the latest word in rolling systems based on the SKF roller bearings, wherewith a smooth movement is obtained.

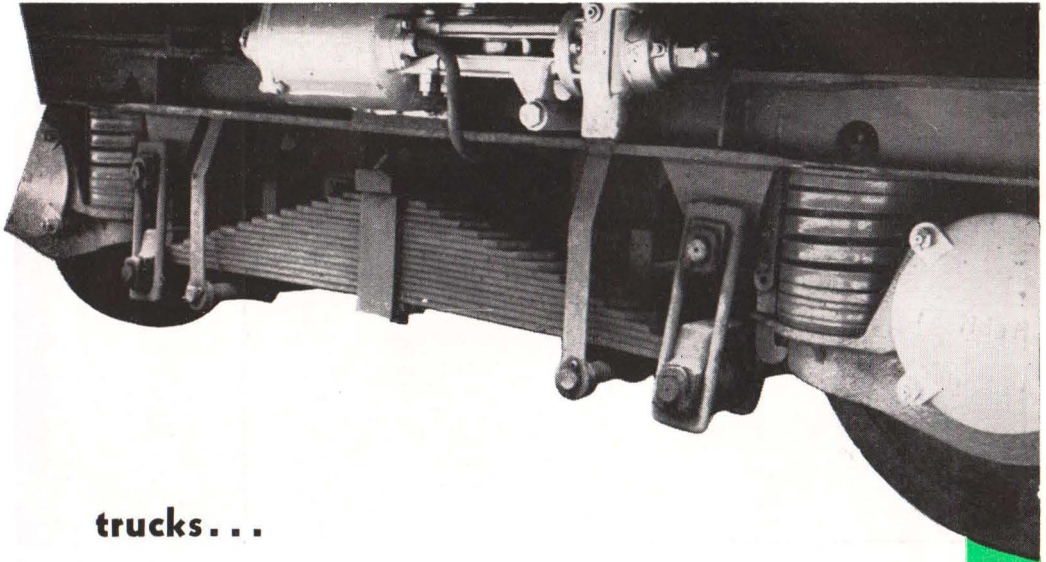
The heating system is radial, which has been proven to be the best. The cooling of the air to be discharged into the cars by filtration, is obtained by freon gas coils.

The windows—one meter and 20 centimeters in width—are notable for their size, increasing visibility to utmost degree, as well as natural light inside the car. The general lighting in the different departments is fluorescent and can be graded. Aside from that, the lighting for each bed has two bulbs, one of which is dark blue, to allow sleep with a soft light, if desired, and the other for reading and general purposes.

The tapestry in the cars, with delicate European touch, is of silk and cotton fabrics in harmonious colors. The woolen carpets, curtains and nylon draperies are happily combined with precious woods and other decorative details.



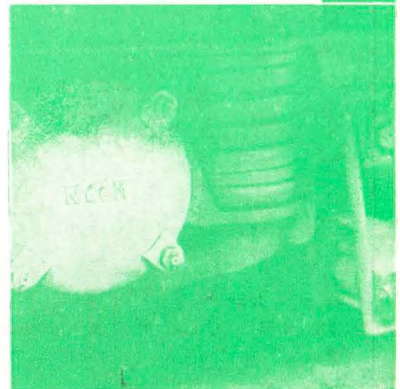
THE SIGN OF BEAUTY has been stamped in each and every detail of the AGUILA AZTECA train... Just as the great masters in painting and sculpture studied the proportions, form and color, the constructors of these modern cars have studied all the factors which may produce satisfaction, delight and comfort to the traveller... Everything is combined to give you the true pleasure of travel...

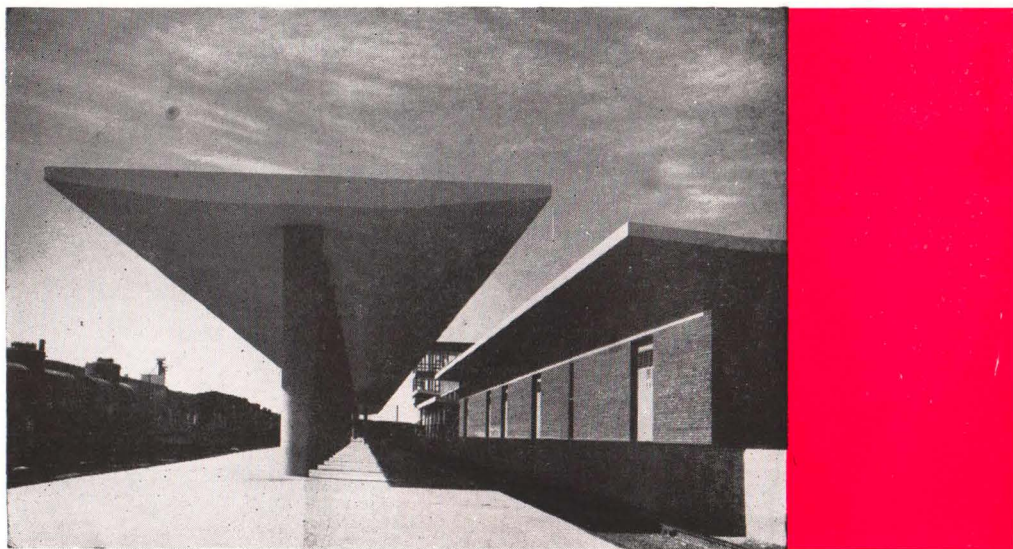


trucks...

THE DESIGN of the modern trucks of the AGUILA AZTECA is truly an outstanding improvement in railway car construction... These are light in type besides being provided with the double action clasp-brakes with two brake cylinders to each truck, thus making air applications more uniform and potent... Each truck has 8 oil-fed shock absorbers to avoid sudden jolts, and SKF roller bearing system. A very smooth motion is obtained, economizing locomotive exertion...

THERE is no comparison between the weight of the old fashioned cars with the light consistency of the cars constructed in Switzerland by Schindler Wagons, S. A. The old cars reached a tonnage of 80 and 90 tons, while the AGUILA AZTECA train registers the following weights: First class luxury cars: 49 tons. Sleeping car: 52 tons. Dining car, 53 tons. Bar Observation Car, 48 tons. With the lesser tonnage one third of locomotive exertion is saved.





the modern Terminal Station at NEW LAREDO

OF GREAT PURITY of line, this building is scrupulously functional and without doubt the best conditioned and modern on both sides of our Northern border.

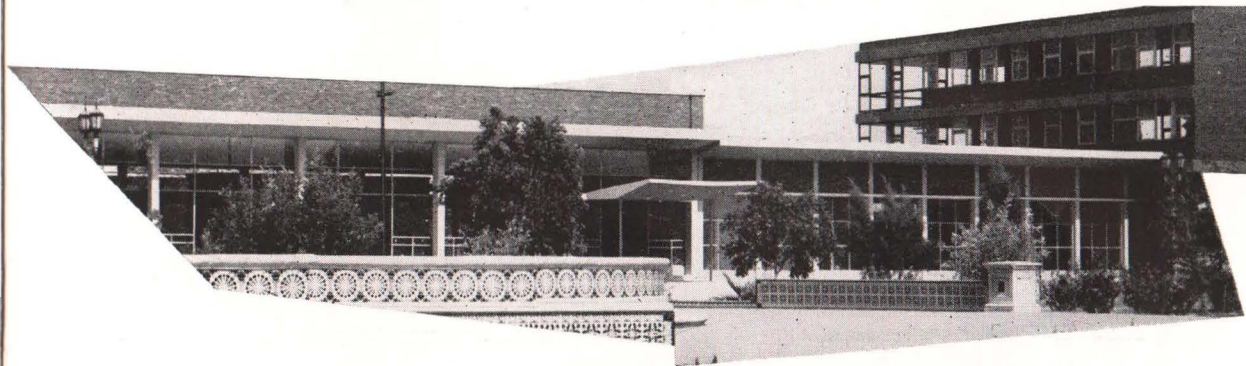
The construction of this important station has solved many urban and railway problems. New Laredo is a major gateway in import and export, and also the

center of intense national and foreign tourist travel; moreover, the old station practically divided the city in two, whereas the new one allows free urban development.

This terminal station, which costs \$2,435,864.00, is located on the western side of "Primero de Mayo" Park, with its principal entrance on the East, at Ave. Madero. It is bounded on the North by Mina St., on the South by property of the National Railways and on the West by the station track yard.

The building has three floors and it covers 2,000 square meters of which more than 600 meters house the railways offices, 813 m² the warehouses and store-rooms for valuables and baggage, and 670 m² for public service. Nothing is lacking for the easy clearance of fiscal and railway matters; offices for Postal Department, for



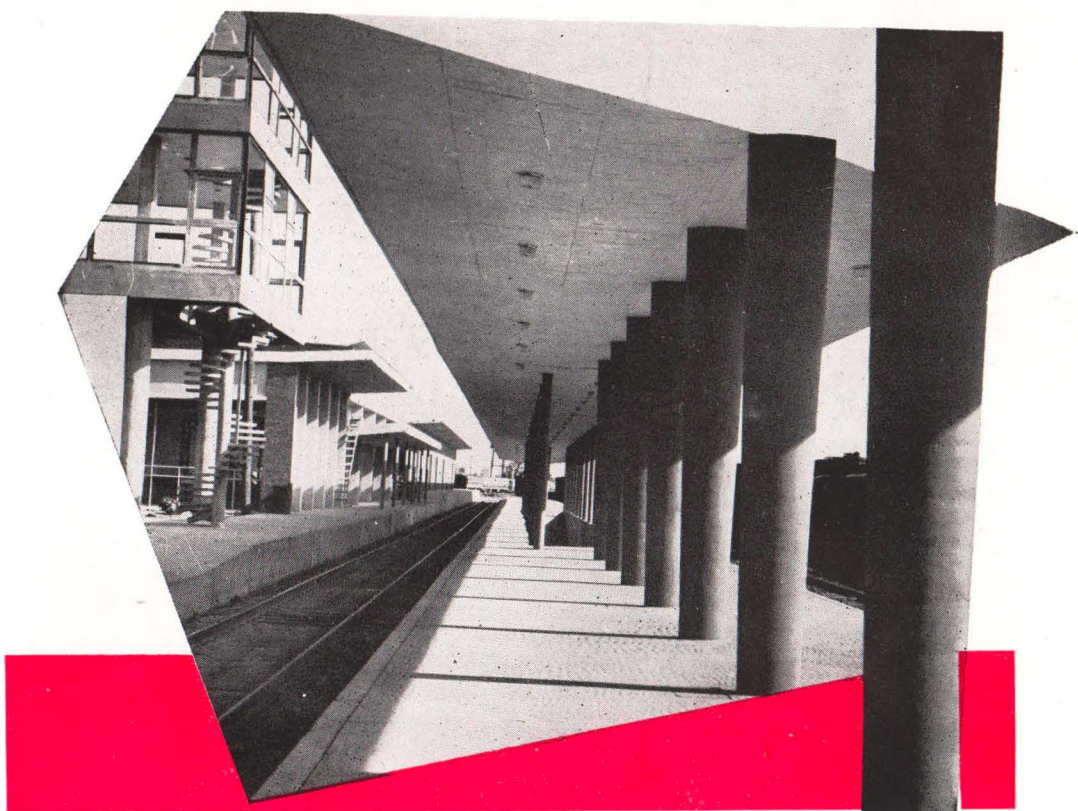


international correspondence, express and baggage with special inspection sections; offices for customs and migration employees, ticket offices, waiting rooms, and special magazine stands, restaurant and bar for quick service, perfect sanitary toilets; customs agencies, postal and telegraph offices, cigar stands, money exchange, etc.

The building has ample parking yards for freight, unloading of postal and express

trucks, this last connected with the station platform by tunnel. All the departments are equipped with air conditioning which provides great comfort both for the public and personnel, considering the extreme climate of New Laredo.

The inauguration date of this new unit coincided with the date in which the European cars of the new AGUILA AZTECA train were placed in service.



hour schedule - trains 1 and 2

MEXICO CITY - NEW LAREDO, TAMS.

| Train Nº 1 | | Train Nº 2 |
|---------------|---------------------|---------------|
| 8.20 | MÉXICO (Buenavista) | 20.00 |
| 8.42 | Lechería | 19.30 |
| 9.23 | Apaxco | 18.43 |
| 9.27 | Vito | 18.39 |
| 9.32 | Calera | 18.34 |
| 9.43 | Teocalco | 18.19 |
| 10.15 | Sayula | 17.45 |
| 10.44 | Nopala | 17.16 |
| 11.10 | Huichapan | 16.54 |
| 12.00 | Bernal | 16.02 |
| | La Griega | 15.19 |
| 12.59 | QUERÉTARO | 14.57 |
| a. 13.35 | ESCOBEDO | l. 14.15 |
| l. 13.55 | ESCOBEDO | a. 13.55 |
| 14.03 | Comonfort | 13.47 |
| 14.35 | San Miguel Allende | 13.08 |
| 15.29 | Dolores Hidalgo | 12.18 |
| 15.38 | Río Laja | 12.08 |
| 16.15 | Obregón | 11.29 |
| 16.38 | San Felipe | 11.08 |
| 16.56 | Chirimoya | 10.41 |
| 17.24 | Villa Reyes | 10.06 |
| a. 18.15 | SAN LUIS POTOSÍ | l. 9.15 |
| l. 18.35 | SAN LUIS POTOSÍ | a. 8.55 |
| 19.16 | Bocas | 7.57 |
| 19.59 | Venado | 7.14 |
| 20.21 | Charcas | 6.58 |
| a. 21.45 | VANEGAS | l. 5.25 |
| l. 21.55 | VANEGAS | a. 5.15 |
| 0.30 | Carneros | 2.51 |
| a. 1.20 | SALTILLO | l. 1.35 |
| l. 1.40 | SALTILLO | a. 1.15 |
| 1.55 | Ramos Arizpe | 0.51 |
| a. 3.30 | MONTERREY | l. 22.35 |
| l. 3.50 | MONTERREY | a. 22.15 |
| 5.23 | Villaldama | 20.39 |
| 5.29 | Bustamante | 20.33 |
| 6.18 | Lampazos | 19.44 |
| 6.53 | Rodríguez | 19.06 |
| 6.57 | Anáhuac | 19.02 |
| 7.07 | Camarón | 18.52 |
| 8.00 | NUEVO LAREDO | 18.00 |

Paseo de la Reforma
MEXICO CITY



UNIR - SERVIR

