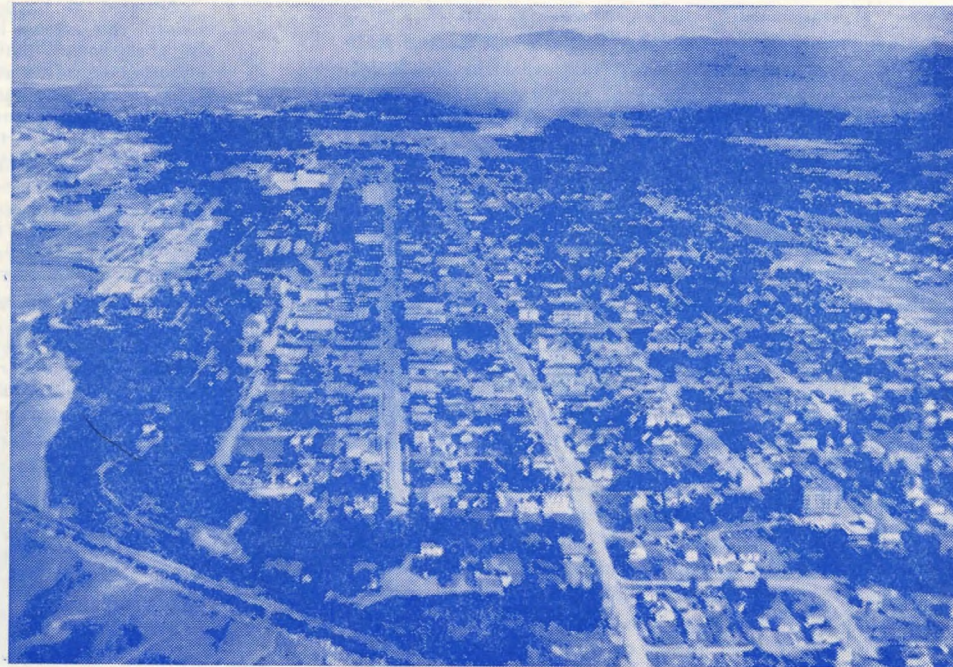




"Adventure Journey" On The Railbelt



ANCHORAGE, METROPOLIS OF THE NORTH

Your Railbelt ticket is the key to the most beautiful vacation land in the world! You may start your journey at either end—at booming, metropolitan Anchorage, or at Fairbanks, in the shadow of the Arctic Circle.

From a booming tent and log town built in 1915 as a base for the Alaska Railroad construction, Anchorage has grown to triple the size of any other Alaskan city. Beautiful modern hotels, motels and apartment buildings provide luxurious comfort to the traveler as he stops here on his way to the Northland.

Golf, baseball, swimming, tennis—Anchorage offers a complete sports program. Smart shops feature the best and latest in fashions, and night clubs engage top-flight Stateside talent for evening entertainment. Here is true metropolitan living!

An interesting side trip to the nearby farming colony in the rich and productive Matanuska Valley will require only one day of motoring over excellent highways.

Another side trip worth taking is that to Seward, the southern terminus of the Alaska Railroad. It is reached by an excellent highway from Anchorage. The Alaska Railroad also maintains a weekly, mixed freight-and-passenger train between the two cities, providing an opportunity to ride through some of the most spectacular mountain country to be seen from any railway in North America.

Seward nestles snugly between Bear and Marathon Mountains, and boasts one of Alaska's finest deep water ports. Modern hotels and motels, restaurants, night clubs, banking facilities, stores and churches make Seward an ideal headquarters for sidetrips by land, air or water in the fabulous fishing, hunting, and scenic paradise of the Kenai Peninsula. Fresh or salt water fishing, game ranging from rabbit to grizzly, spectacular snow-capped mountains and crystal-clear lakes—all are within easy travel distance.

At Moose Pass, the highway and railway from Seward connect with routes leading to the Russian River and the former Sunrise and Hope gold mining district on Turnagain Arm. Have your camera ready as the railroad crosses Upper Trail Lake and skirts the shores of the lake to Mile 33. From Moose Pass, side trips by auto or plane will reach the famous fishing, clamming and crabbing communities of Ninilchik or Seldovia, or the crabbing city of Homer, located at the doorway of the moose, bear and sheep country.

Here Are The Fares

ONE-WAY FOR ADULTS:

Between and	Seward	Anchorage	Nenana	Fairbanks
Seward	\$	\$ 6.85	\$24.70	\$28.20
Anchorage	6.85		17.85	21.35
Palmer	9.40	2.55	16.00	19.50
Curry	14.90	8.05	9.80	13.30
McKinley Park	20.85	14.00	3.85	7.35
Nenana	24.70	17.85		3.50
Fairbanks	28.20	21.35	3.50	

(All fares subject to 10 per cent Federal Tax. Round-trip 30-day tickets take fare of one and one-third the regular one-way price.)

SLEEPING CAR RATES:

BETWEEN ALL STATIONS

Drawing Rooms	
One Passenger	Two or More
\$17.75	\$19.00
Compartments	
One Passenger	Two or More
\$11.30	\$14.45
Berths	
Lower	Upper
\$6.55	\$4.70

Call the Alaska Railroad ticket agent in your city for Pullman reservations. You should claim your reservation prior to 4:00 p. m. on the date of travel.

LOW RATES FOR AUTOMOBILES:

Transport your car to Mt. McKinley National Park and drive along the more than 95 miles of roads in that scenic wonderland. From Fairbanks, cars are transported to Anchorage with free stopover at McKinley on the Alaska Railroad at the low rate of \$35.00 per car, when accompanied by one full-rate adult passenger fare. Round-trip rate from Fairbanks to McKinley and return is also \$35.00 per car, when accompanied by full-rate adult passenger fare.

FOR FURTHER INFORMATION

Write the Traffic Department, Alaska Railroad, in Anchorage, Alaska, or contact:

A. R. SESSIONS

Special Representative of General Manager, Alaska Railroad
224 Federal Building, Seattle, Washington

—OR—

YOUR LOCAL TRAVEL AGENT



Summer 1956



Curry Hotel

For a touch of old-time Alaskan hospitality, stay at the Curry Hotel at one of the most scenic spots on the Alaska Railroad. This is where, in the "old days" of the 20's and 30's, passenger trains made an overnight stop on the run between Seward and Fairbanks.

President Harding and his party stopped at the Curry Hotel in 1923, while en route to Nenana where the President drove the golden spike marking the completion of the Alaska Railroad.

The hotel offers rooms at \$2.50 single and \$4.00 double without bath; \$3.50 single and \$5.00 double, with adjoining bath; and \$4.50 single and \$6.00 double, complete with bath and shower. The hotel has a coffee shop, lounge and bar.

For summer recreation, guests may play on the tennis court and fish in nearby streams. Excellent fishing also is available to those who wish to hire a local bush pilot to fly to areas adjacent to Curry. Scenic flying tours of McKinley Park also are offered from Curry. This beauty spot can be reached only by rail.

The Curry Hotel, on the banks of the beautiful Susitna River, is surrounded by wide lawns for relaxation and rolling hills for hiking. For further information and reservations, write:

ARNOLD OMHOLT, Manager, CURRY HOTEL, CURRY, ALASKA; or

TRAFFIC DEPARTMENT, ALASKA RAILROAD,
ANCHORAGE, ALASKA

Two Unique Trains

The Alaska Railroad named its two principal passenger trains, "The Midnight Sun" and "AuRoRa," after two phenomena of Nature peculiar to Alaska. "The Midnight Sun," night sleeper train, commemorates the solar wonder which transforms our summer nights into day, permitting summer photography from your berth at midnight. The "AuRoRa," daylight train, is named for the luminous streamers of light known as the northern lights, and also is suggestive of the word from Roman mythology meaning "the dawn."

Many conveniences are provided on your trip, including complete porter service on "The Midnight Sun." A club-buffet car is provided on both trains for your dining and drinking pleasure. Wholesome and reasonably priced meals are served, and sandwiches and snacks may be ordered at any time during the trip.

Breakfast and other foods and drinks may be served in your private room aboard "The Midnight Sun." Whether you wish to avail yourself of this service or to enjoy the companionship of friends in the lounge car—it is all for your pleasure and we are happy to serve you.

All Aboard!

Here is the 1956 Train Schedule between ANCHORAGE, McKinLEY, and FAIRBANKS for the Alaska Railroad's two, fine passenger trains, the comfortable night train, "The Midnight Sun," and the dependable daylight train, "The AuRoRa."

Condensed Schedule "THE MIDNIGHT SUN"

NORTHBOUND			SOUTHBOUND		
Train 8			Train 7		
Read Down			Read Up		
Sun-Tues-Thurs			Mon-Wed-Fri		
8:30 p.m.	Lv. Anchorage	Ar.	8:15 a.m.		
10:10 p.m.	Lv. Wasilla	Lv.	6:29 a.m.		
12:45 a.m.	Lv. Curry	Lv.	4:00 a.m.		
4:32 a.m.	Lv. McKinley	Lv.	12:19 a.m.		
5:20 a.m.	Lv. Healy	Lv.	11:40 p.m.		
6:44 a.m.	Lv. Nenana	Lv.	10:09 p.m.		
8:25 a.m.	Ar. Fairbanks	Lv.	8:30 p.m.		

"The Midnight Sun" is equipped with Standard Sleeping car's with drawing rooms, compartments and sections; diner and club car and reclining seat coaches.

"The AuRoRa"

NORTHBOUND			SOUTHBOUND		
Read Down			Read Up		
Train No. 6			Train No. 5		
Tu-Thurs-Sat			Sun-Wed-Fri		
10:00 a.m.	Lv. Anchorage	Ar.	9:35 p.m.		
11:40 a.m.	Lv. Wasilla	Lv.	7:48 p.m.		
2:10 p.m.	Lv. Curry	Lv.	5:25 p.m.		
5:53 p.m.	Lv. McKinley	Lv.	1:49 p.m.		
6:40 p.m.	Lv. Healy	Lv.	1:10 p.m.		
8:04 p.m.	Lv. Nenana	Lv.	11:39 a.m.		
9:45 p.m.	Ar. Fairbanks	Lv.	10:00 a.m.		

"The AuRoRa" is equipped with diner and club car and reclining seat coaches.

Seat reservations not required on the AuRoRa.

TO PORTAGE, WHITTIER, and SEWARD

SOUTHBOUND			NORTHBOUND		
Read Down			Read Up		
Sun. Sat.			Sat. Sun.		
7:00 p.m.	1:30 p.m.	Lv. Anchorage	Ar. 8:00 p.m.	11:30 p.m.	
8:30 p.m.	3:00 p.m.	Lv. Portage	Lv. 6:25 p.m.	9:55 p.m.	
8:55 p.m.	3:30 p.m.	Ar. Whittier	Lv. 6:00 p.m.	9:30 p.m.	
SOUTHBOUND			NORTHBOUND		
Read Down			Read Up		
Fri. Fri.			Fri. Fri.		
6:00 p.m.	6:00 a.m.	Lv. Anchorage	Ar. 10:30 a.m.	10:30 p.m.	
7:30 p.m.	7:30 a.m.	Lv. Portage	Lv. 8:55 a.m.	8:55 p.m.	
7:55 p.m.	7:55 a.m.	Ar. Whittier	Lv. 8:30 a.m.	8:30 p.m.	
SOUTHBOUND			NORTHBOUND		
Read Down			Read Up		
Mon-Tue-Wed-Thur			Mon-Tue-Wed-Thur		
9:30 a.m.	Lv. Anchorage	Ar.	5:00 p.m.		
11:45 a.m.	Lv. Portage	Lv.	3:35 p.m.		
11:45 a.m.	Ar. Whittier	Lv.	3:00 p.m.		

Mixed train service is operated between Anchorage and Seward, leaving Anchorage passenger depot at 9:00 a. m. Fridays for Seward, and leaving Seward 8:00 a. m. Saturdays for Anchorage. This train will carry passengers, baggage, mail and express.

A Mountain Wonderland

A wonderful panoramic view of Mt. McKinley may be had from several points on the Alaska Railroad, but particularly beginning at Mile 224.3. Mt. McKinley towers 20,300 feet above sea level. Other giants of the Alaska Range include Mt. Hunter (14,960 feet) and Mt. Foraker (17,000 feet). Farther to the west can be seen Mt. Russell (11,600) and Mt. Dall (9,000). This is the first of many ideal vantage spots for camera enthusiasts.

From Curry, elevation 546 feet, located about half way between the coast and Fairbanks, the rail road climbs steadily through mountain gorges and along steep hillsides to an elevation of 2,363 feet at Mile 310, a rise of 1,817 feet in 62 miles. This is the summit of the continental divide—the lowest rail pass in all the Rocky Mountain chain, and only 40 miles distant from the highest point on the North American continent.

McKinley National Park contains great glaciers, bold mountain ranges, streams of game fish and miles of vivid flowers. After the northbound day train leaves McKinley, passengers should watch for the herds of Dall sheep on the mountainsides, and for the bear, moose and caribou that roam the park. The large panoramic windows in your coach will make sightseeing a pleasure.

Nenana is the largest town served by the railroad before reaching Fairbanks. Situated on the south bank of the Tanana River at the confluence of that stream with the Nenana River, it served in 1916 as a construction base for the railroad. For many years it has been the base of riverboat freight operations and old Mississippi-style sternwheelers may still be seen there.

Northern terminus of the Alaska Railroad is Fairbanks, established in 1901 as a trading post. Its real growth began between 1902 and 1904, with the discovery of gold by Felix Pedro. Here is preserved the flavor of the early gold rush days, and many old mining towns are easily accessible by road.

From Fairbanks, the visitor may travel by auto, bus or plane to Circle Hot Springs, America's northernmost spa, located scant miles south of the Arctic Circle. Hot baths from natural warm springs, good accommodations and typical Alaskan hospitality make this a "must" on the traveler's list.

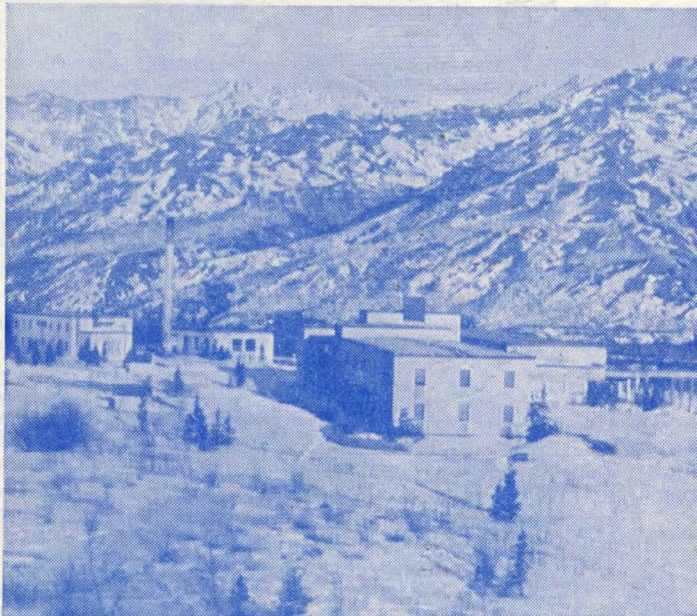
Fairbanks, like Anchorage, is a booming city. Nearby are two very large Air Force installations, Ladd and Eielson Air Force Bases. Five miles from town is America's farthest north university, the University of Alaska.

Beautiful McKinley

Situated in scenic Mt. McKinley National Park is a modern, comfortable hotel complete with dining room, bar and guest rooms, both with and without baths. The hotel is located near the Alaska Railroad's McKinley Park Station. It is suggested that reservations be made in advance. Write or wire: McKinley Park Hotel, McKinley Park, Alaska, or Traffic Department, Alaska Railroad, Anchorage.

Room rates are based on the European plan. One person to a room, with bath, \$10.00; without bath, \$8.00 per day; two persons to a room, with bath, \$16.00; without bath, \$12.00; three persons to a room, with bath, \$20.00; without bath, \$16.00; family room, four persons, with bath, \$24.00; baby crib or cot, \$1.50 additional.

Ala carte breakfasts are served in the dining room. Luncheons are \$2.00 and up and dinners, \$3.00 and up. Sandwiches, soft drinks, and refreshments are served ala carte. Children under 12 years of age are served child's portion of meal at half rate.



McKINLEY HOTEL

Camp Denali

Camp Denali is a wilderness retreat located in the midst of the scenic alpine grandeur of the sub-Arctic frontier, designed for those who want to experience the essence of Alaskan living—the sincere, informal hospitality of the "bush" country. Camp Denali appeals to those who wish to exchange modern conveniences and commercialized amusements for an intimacy with the out-of-doors and genuine delights of nature. It is located on the northern boundary of Mt. McKinley National Park. A station wagon schedule is maintained three times a week between the camp and McKinley Park Station, June 1 to September 15, to meet trains of the Alaska Railroad. For information and reservations write:

CAMP DENALI

P. O. Box 1992, Fairbanks, Alaska, until June 1, 1956
McKinley Park, Alaska, June 1 to September 15, 1956