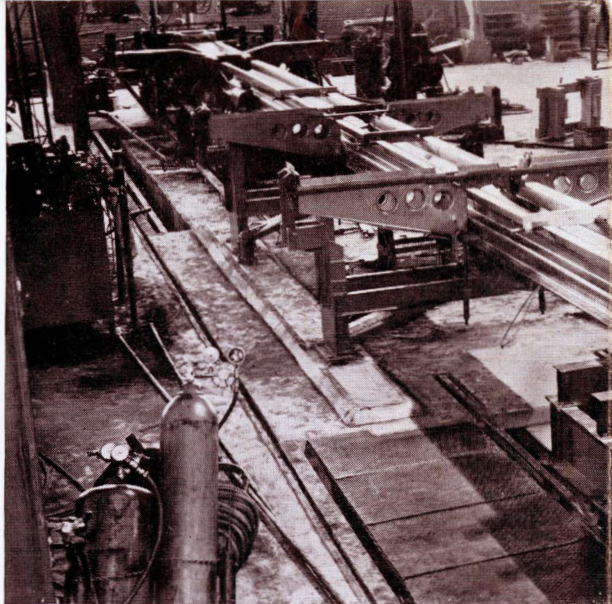


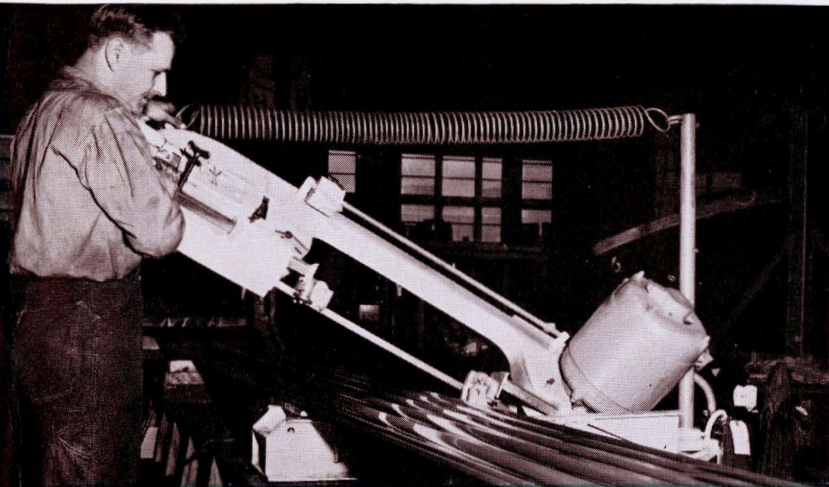
Budd all-stainless steel railroad cars are built in this twenty-four-and-a-half acre modern plant on the outskirts of Philadelphia. Here we have applied the technique of "line production" to railroad cars and have five assembly lines in operation.



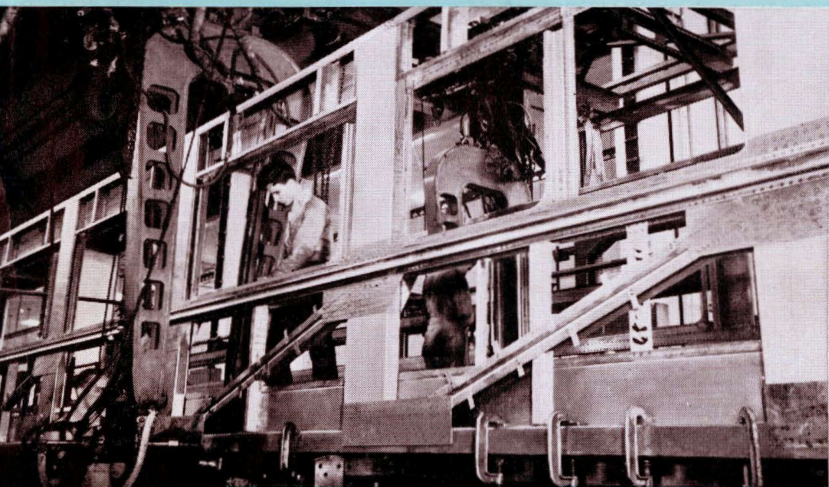
How we built this Railroad Car



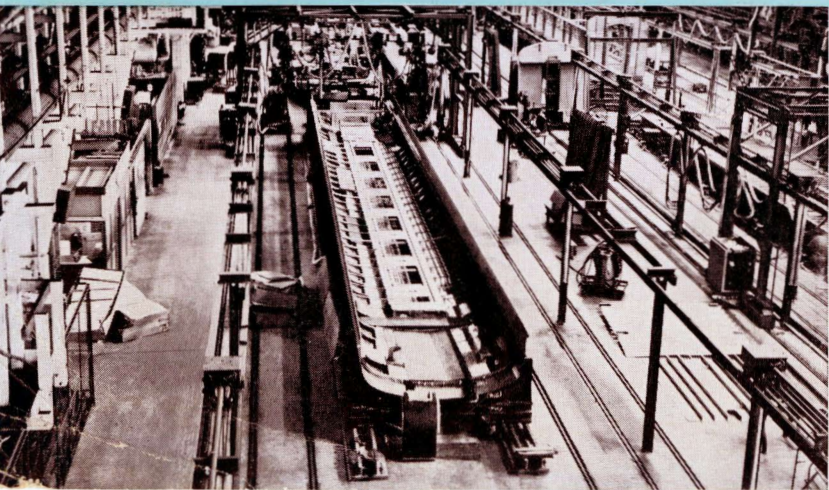
This is the center sill, the backbone of the roads specifies that a car's center sill must be able to support a load of 800,000 pounds. This one will take



From a gleaming ribbon of stainless steel at one end of the plant, the car takes form as it proceeds down the line, to emerge, completed, at the other end of building, one third of a mile away.



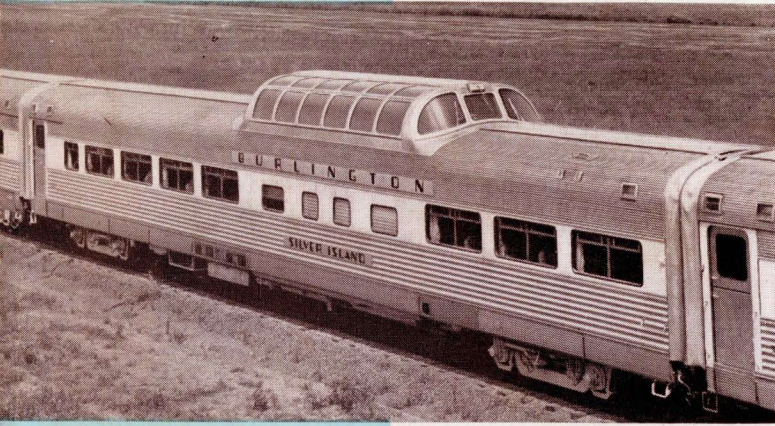
You may have noticed how we always stress the word "all" when referring to Budd all-stainless steel cars. Here you can see why. This is a car side-frame, just like the one in the car you're standing in. It is built of stainless steel. Only Budd uses this tremendously strong (and expensive) material for car structures.



We turn the roof upside down, so that all the ducts, pipes and wiring can be accurately installed. The roof, of course, is stainless steel and is the strongest railway car roof made.



# Budd Builds All Types of Railway Passenger Cars



This is the spectacular Vista-Dome car, which permits you to ride in a raised, glass-and-steel enclosed upper deck, and see in all directions. More than 40 are already in service.

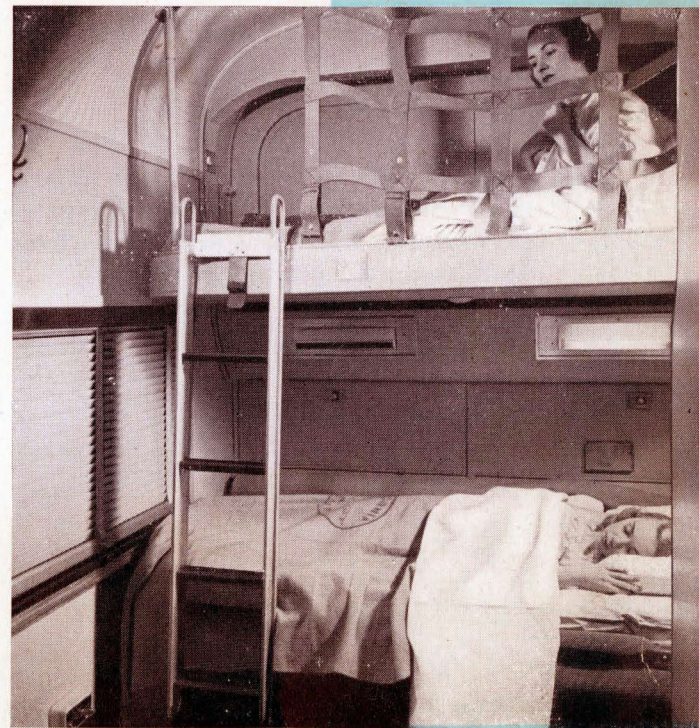


The famous sleeper coach, popularized by Budd, for low-cost, long distance travel. Individual reclining chairs. Spacious and beautiful lounges. Air conditioned. Fluorescent lighting.

This is the double bedroom in a Budd sleeping car, first to provide a full width, picture window and enclosed toilet facilities. Budd design has established new standards of luxury and privacy for all sleeper accommodations.



All types of feature cars, such as this beautiful tavern-lounge car, come off the lines of the great Budd railway car building plant.



Budd all-stainless steel railway cars are the result of the desire, the knowledge and the facilities to build the finest and safest railway cars in the world. The Budd Company, Philadelphia.